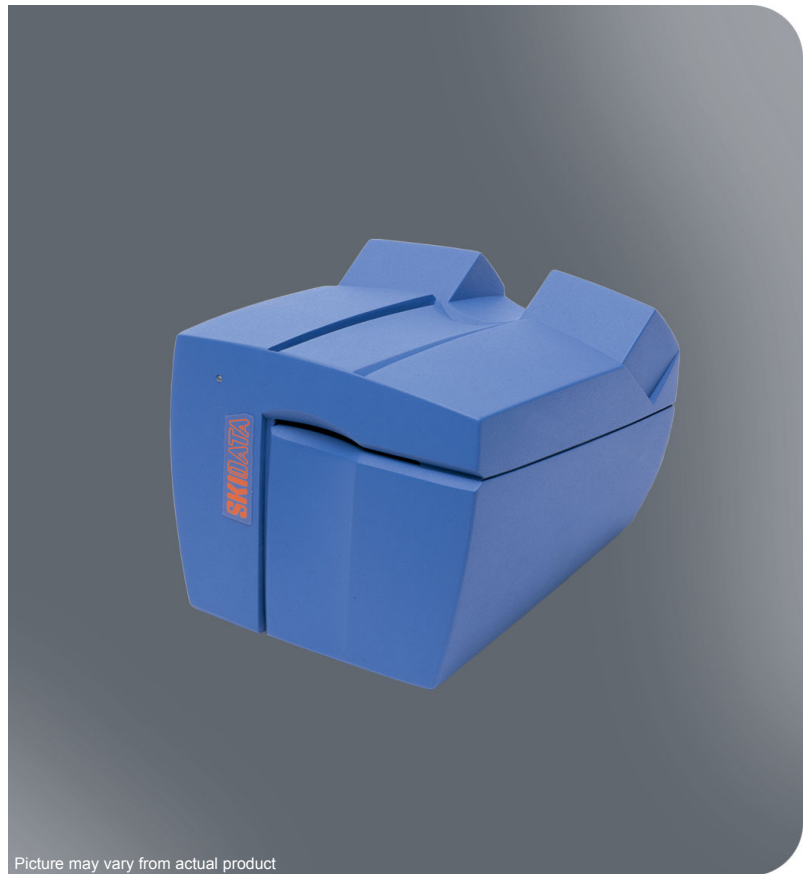


The CO x70i TDM/C is a compact and inexpensive ticket printer and coder. Coding units read, print and code ISO-format tickets. In addition to these features, the CO x70i TDM/C can process ThermoReWrite KeyCards. These tickets can be reused a number of times, as they are equipped with a thermosensitive coating for receiving visual imprints which can be erased at any time. The CO x70i TDM/C is a printer, which was especially designed for the advance ticket sale in hotels or other points of sale via internet for connection to existing PCs.



Picture may vary from actual product

### Features

- Compatible with the data carriers used in all SkiData systems
- Flexibility by way of economical printing of uniform blank cards
- Direct thermoprinting (thermosensitive coating on the ticket is turned black)
- Standard interface (RS232)
- Safe from manipulation because tickets are printed and coded in a single step
- Contactless data carriers such as Swatch Access can be coded via the integrated groove antenna
- Simple handling due to the omission of colour ribbons and ink cartridges
- Electronic coding for 122.88 KHz and 13.56 MHz
- ISO 15693-compatible
- For erasing and printing ThermoReWrite KeyCards

**Models, accessories**

937100035 ..... CO x70i TDM/C thermodirect coding unit with manual ticket insertion and erase function. For coding contactless data carriers, 122.88 kHz and 13.56-MHz KeyCards and Swatch Access on built-in antenna. Can be used to issue bar-code tickets, manual insertion into front.

**Technical features**

Data Carriers ..... Barcode card, KeyCard, Swatch Access, KeyBand, GORE-TEX® Glove  
Tickets ..... 84 x 54 mm, thickness of 0.3 - 1.2 mm  
Input voltage ..... 85 – 132 or 170 – 265 V, 47 – 63 Hz  
Power consumption ..... 200 Watt max.  
Norms ..... CE symbol, ETS 300 330  
Ambient conditions ..... +10° – +35 °C, 25 % – 85 % humidity, (non condense)  
Dimensions (mm) ..... printer: 168 x 164 x 132, power unit: 250 x 100 x 55  
Weight ..... printer: 1.55 kg, power unit: 1.7 kg  
Printing area ..... 45 x 48 mm  
Resolution ..... 200 dpi  
Printing speed ..... 3.5 s. Total time required for issue 7 s.  
Ticket insertion ..... manual  
Color ..... Bue RELIUS E-14-45, Orange (PANTONE 151 C)

