

Features:

- No wiring required.
- Easy set-up, power with battery (CR2032 type, included) and it works automatically.
- LED will be lighted upon button depressed to indicate transmission to Receiver.
- Work automatically when door is open or close.
- The push button also acts as door chime.
- User can program different tune for different channel (eg. door open, door close, push button)
- Work with Chime Receiver (item 6) and/or Donut (item 7) and/or Light Receiver (item 8v & 9) and/or Wall Switch Receiver, (item 10).
- Long battery life (approximately 3 years)
- Outdoor

Installation:

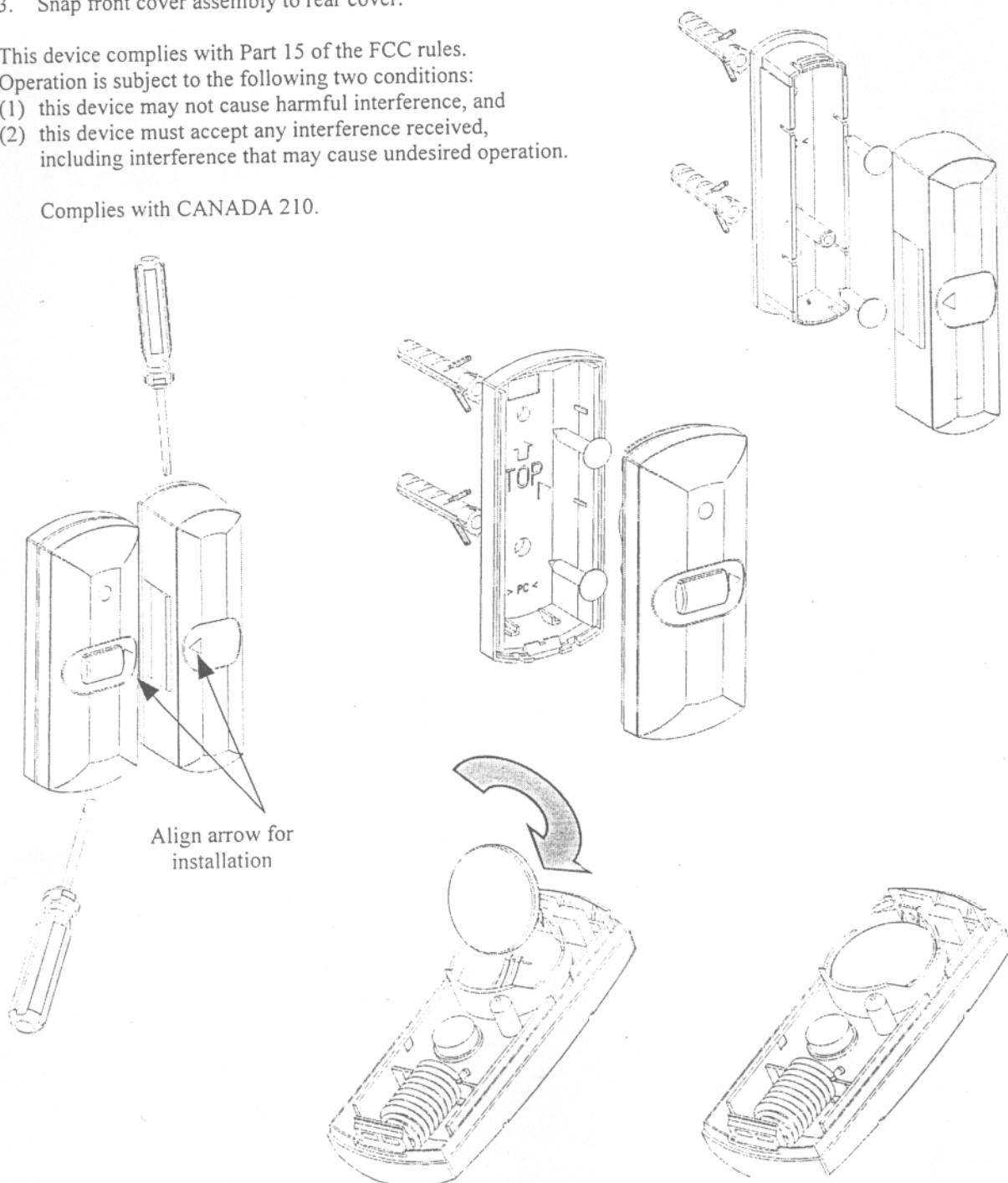
1. Using small flat (-) screwdriver to pry open the cover and insert the battery onto battery holder
2. Install unit vertically with 2 screws (included) on Magnetic Piece and 2 screws (included) for Door-push. Aligned arrow indication and make sure both the Magnet Piece and Door Push on the same level of surface
3. Snap front cover assembly to rear cover.

This device complies with Part 15 of the FCC rules.

Operation is subject to the following two conditions:

- (1) this device may not cause harmful interference, and
- (2) this device must accept any interference received, including interference that may cause undesired operation.

Complies with CANADA 210.



Notice :

(1) For FCC

Caution:

The changes or modifications not expressly approved by the party responsible for compliance could void the user's authority to operate the equipment.

(2) For Industry Canada

"Operation is subjects to the following two conditions:(1)this device may not cause interference, and (2) this device must accept any interference, including interference that may cause undesired operation of the device."