

WD-3110 & WD3120

Features:

- No wiring required.
- Easy set-up, power with battery (CR2032 type, included) and it works automatically.
- LED will be lighted upon button depressed to indicate transmission to Receiver.
- LED Button, work as Secret Button for pre-set 2nd chime in order for someone at home to acknowledge the special guest (ie occupant).
- Work with Chime Receiver (item 6) and/or Donut (item 7) and/or Light Receiver (item 8v & 9) and/or Wall Switch Receiver, (item 10).
- Long battery life (approximately 3 years)
- Outdoor

Installation:

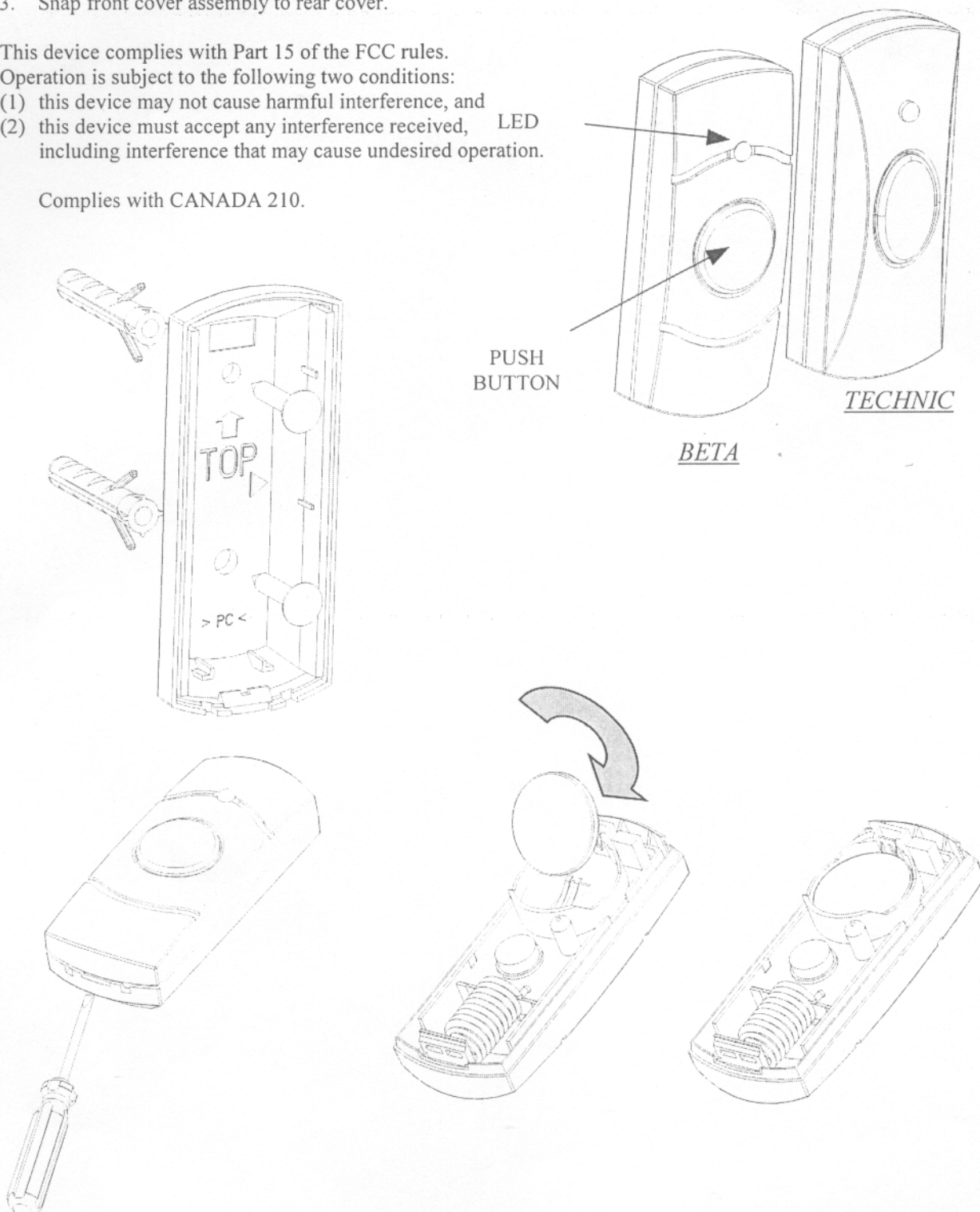
1. Using small flat (-) screwdriver to pry open the cover and insert battery
2. Install unit vertically with 2 screws provided
3. Snap front cover assembly to rear cover.

This device complies with Part 15 of the FCC rules.

Operation is subject to the following two conditions:

- (1) this device may not cause harmful interference, and
- (2) this device must accept any interference received, LED including interference that may cause undesired operation.

Complies with CANADA 210.



Notice :

(1) For FCC

Caution:

The changes or modifications not expressly approved by the party responsible for compliance could void the user's authority to operate the equipment.

(2) For Industry Canada

"Operation is subjects to the following two conditions:(1)this device may not cause interference, and (2) this device must accept any interference, including interference that may cause undesired operation of the device."