

TwinMOS Booming

802.11b Wireless LAN Card

User's Manual

TwinMOS®

Contents

PACKAGE CONTENTS.....	2
INTRODUCTION.....	3
WIRELESS NETWORK OVERVIEW.....	4
BOOMING WIRELESS NETWORK SCENARIOS.....	6
INSTALLATION FOR LINUX	9
INSTALLATION FOR WINDOWS.....	11
CONFIGURATION UTILITY.....	19
TROUBLESHOOTING.....	27
TECHNICAL SPECIFICATIONS.....	28
FCC CAUTION	39

PACKAGE CONTENTS

Unpack your *Booming WLAN Card* kit and verify that all items are present.

- *Booming* Wireless LAN card
- User's Manual (on CD)
- Driver (on CD)

If any of the items described appear to be damaged or missing, please contact your reseller.

INTRODUCTION

The **Booming WLAN Card** is a wireless network client that complies with the IEEE 802.11b standard on wireless LANs. The IEEE 802.11b standards compliance means this adapter gives you the flexibility to connect it to any 802.11b network. The IEEE 802.11b Ethernet standard allows you to connect computers and devices at speeds up to 11Mbps, dependent upon the distance between wireless adapters, the configuration of your working environment, or the capabilities or limitations of your computer systems.

This **Booming WLAN Card** supports following WLAN features :

- Automatic transmit data rate select mechanism in the transmit range of 1, 2, 5.5 and 11 Mbps.
- Center frequency channel selection (2.4 GHz)
- Roaming over multiple channels.
- Supports power save mode
- Support TKIP and AES advanced WLAN security
- 128-bit Wired Equivalent Privacy (WEP) data encryption.

This **Booming WLAN card** comes with software drivers for the most popular Microsoft Windows operating systems and can be integrated into a larger network, running Windows XP, Windows 2000, Windows ME, or Windows 98 in either Ad-Hoc mode or infrastructure mode. This manual provides a quick introduction to wireless technology and its application as it relates to networking. Take a moment to read through this manual and familiarize you with wireless technology. You should also give yourself some time to become familiar with your new wireless network.

WIRELESS NETWORK OVERVIEW

A wireless local area network (LAN) is a flexible data communications system implemented as an extension to, or as an alternative for, a wired LAN. Using radio frequency (RF) technology, wireless LANs transmit and receive data over the air, minimizing the need for wired connections. Thus, wireless LANs combine data connectivity with user mobility.

A local area network that transmit and receive over the air typically in an unlicensed frequency such as the 2.4GHz band. A wireless LAN does not require lining up devices for line of sight transmission like IrDA. Wireless access points (base stations) are connected to an Ethernet hub or server and transmit a radio frequency over an area of several hundred to a thousand feet which can penetrate walls and other nonmetal barriers. Roaming users can be handed off from one access point to another like a cellular phone system. Laptops use wireless modems that plug into an existing Ethernet port or that are self contained on PC cards, while stand-alone desktops and servers use plug-in cards (ISA, PCI, etc.).

Wireless LANs offer the following productivity, convenience, and cost advantages over traditional wired networks :

Mobility - WLAN provide LAN users to access data in any location within the operating range of the WLAN. Ad-hoc management decisions based on real-time information can significantly improve worker efficiency.

Installation Speed and Simplicity - Installing a wireless LAN system can be fast and easy and can eliminate the need to pull cable through walls and ceilings.

Installation Flexibility - Wireless technology allows the network to go where wire cannot go.

Reduced Cost-of-Ownership - While the initial investment required for wireless LAN hardware can be higher than the cost of wired LAN hardware, overall installation expenses and life-cycle costs can be significantly lower. Long-term cost benefits are greatest in dynamic environments requiring frequent moves and changes.

Scalability - Wireless LAN systems can be configured in a variety of topologies to meet the needs of specific applications and installations. Configurations are easily changed and range from peer-to-peer networks suitable for a small number of users to full infrastructure networks of thousands of users that enable roaming over a broad area.

Installation Considerations

Designed to go up to 300 feet (100 meters) indoors and up to 900 feet (273 meters) outdoors, **Booming WLAN card** lets you access your network from virtually anywhere you want. Keep in mind, however, that the number and thickness of walls, ceilings or other objects that the wireless signals must pass thru may limit range. Typical ranges vary depending on the types of materials and background RF noise in your home or business. The key to maximizing range is to follow these basic principles:

Keep the number of walls and ceilings between the access point and your receiving device to a minimum - Each wall or ceiling can reduce your TwinMOS **Booming** Wireless product's range from 3-90 feet (1-30 meters.) For some businesses or for a large residential home deployment, it may be more beneficial to have more than one access point with overlapping coverage.

1. *Be aware of the direct line between Access Points, Residential Gateways, and Computers* - A wall that is 1.5 feet thick (.5 meters), at a 45-degree angle appears to be almost 3 feet (1 meter) thick. At a 2-degree angle it looks over 42 feet (14 meters) thick! Try to make sure that the Access Points and Adapters are positioned so that the signal will travel straight through a wall or ceiling for better reception.
2. *Building Materials make a difference* - A solid metal door or aluminum studs may have a negative effect on range. Try to position Access Points, Residential Gateways, and Computers so that the signal passes through drywall or open doorways and not other materials.
3. Make sure that the antenna is positioned for best reception by using the software signal strength tools included with your product.
4. Keep your product away (at least 3-6 feet or 1-2 meters) from electrical devices that generate RF noise, like microwaves, monitors, electric motors, etc.

For the average residence, range should not be a problem. If you experience low or no signal strength in areas of your home that you wish to access, consider positioning the Access Point in a location directly between the Residential Gateways and/or Computers that will be connected. Additional Access Points can be connected to provide better coverage in rooms where the signal does not appear as strong as desired.

Using radio frequency (RF) technology, WLANs transmit and receive data over the air, minimizing the need for wired connections. Thus, WLANs combine data connectivity with user mobility, and, through simplified configuration, enable movable LANs.

Booming WIRELESS NETWORK SCENARIOS

The *Booming WLAN Card* enables you to:

- Connect your computer to a Ad-Hoc workgroup of wireless computing devices (see Figure 1-1 on page 7).
- Connect your computer to a Small Office/Home Office (SOHO) network that includes a Residential Gateway (RG) access point (see Figure 1-2 on page 8).
- Connect your computer to a Local Area Network (LAN) Infrastructure that includes Access Points, or other IEEE 802.11 compliant LAN systems (see Figure 1-3 and Figure 1-4).
- Expand the capabilities of your Access Points, to support wireless devices that have been equipped with *Booming WLAN Card*.

Ad-Hoc Workgroup

The Ad-Hoc workgroup configuration enables you to quickly set up a small wireless workgroup, where the workgroup participants can exchange files using features like “Files and Printer Sharing” as supported by Microsoft Networking.

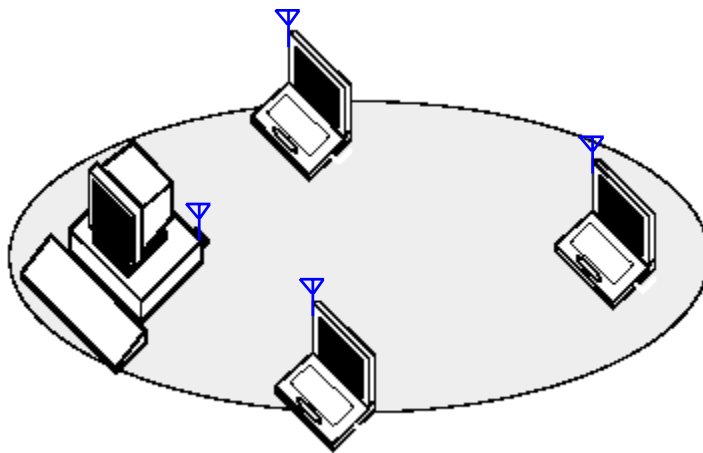


Figure 1-1 Ad-Hoc Wireless Workgroup

You can use this option to setup a temporary or ad-hoc network in environments where no access points are available (for example in Small Office/Home Office (SOHO) environments). As long as the stations are within range of one another, this is the easiest and least expensive way to set up a wireless network.

Home Networking

With the TwinMOS *Booming WLAN card*, wireless access to the Internet or other computers is at your fingertips. All you need to do is connect the wireless computers to an external cable, an xDSL or a ISDN modem and you are ready to :

- Share files and printers, and
- Access the Internet

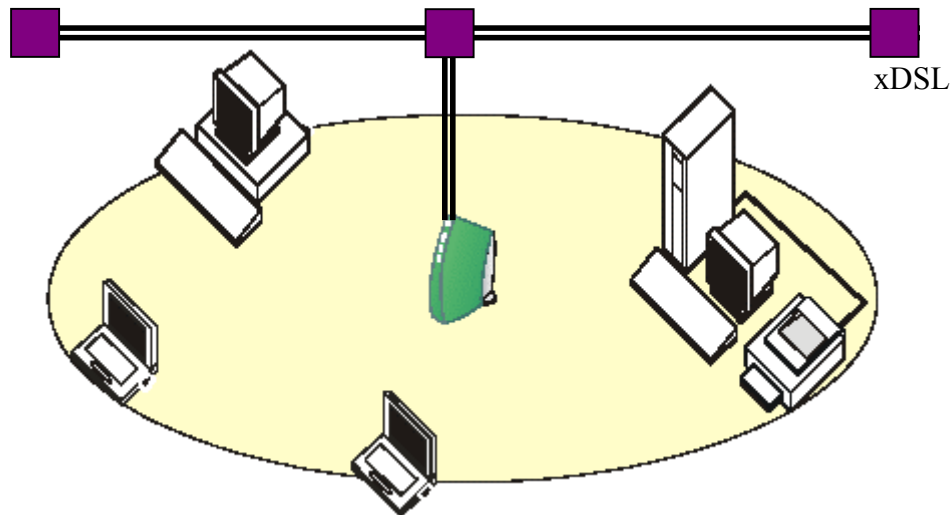


Figure 1-2 Connect to a Residential Gateway (RG)

Enterprise Networking

With the 11 Mbps Wireless LAN access point you can connect to a corporate Local Area Network (LAN) infrastructure to have wireless access to all network facilities. LAN Infrastructures may either be:

- Stand-alone wireless LANs (Figure 1-3).
- Wireless network infrastructures connected to an existing Ethernet network (Figure 1-4).

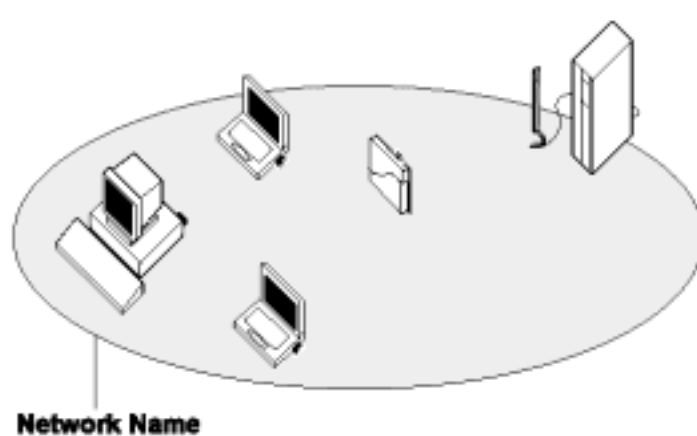


Figure 1-3 Stand Alone Wireless LAN

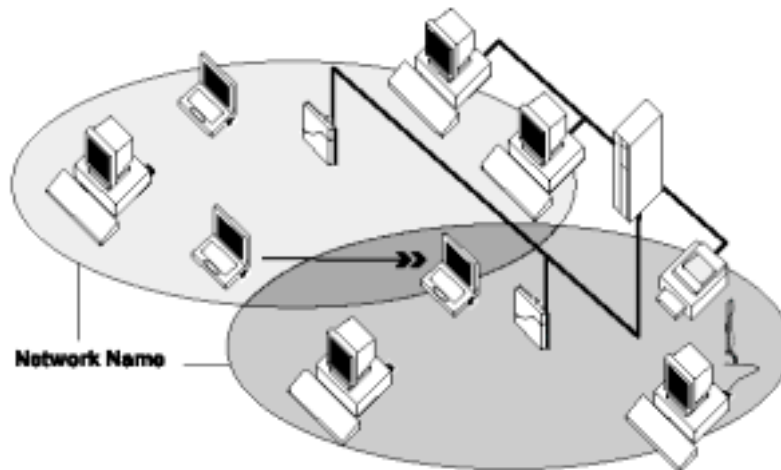


Figure 1-4 LAN Infrastructure

It's Easy

The **Booming WLAN Card** functions like any standard wired Ethernet card, but **Booming WLAN Card** does not need any wires!

Where an Ethernet card requires a cable connection to a hub and/or patch panel, the cable physically ties you down to the location of the wired connection.

Booming WLAN Card allows you to connect your computer to a Local Area Network (LAN) system from anywhere within the wireless coverage area. Expanding or re-designing your network is easy: Add or relocate access point, power-up your (new) wireless computers, and you're done!

Unlike Ethernet, TwinMOS **Booming WLAN Card** will enable you to roam throughout the network while remaining connected to the LAN.

Note : The Booming WLAN Card is a radio product. Refer to the flyer "Information to the User" for regulatory information that may apply in your country.

INSTALLATION FOR LINUX

Content:

rh71/booming_rh71.o	Booming driver for RedHat 7.1
rh72/booming_rh72.o	Booming driver for RedHat 7.2
rh73/booming_rh73.o	Booming driver for RedHat 7.3
rh80/booming_rh80.o	Booming driver for RedHat 8.0

Procedure:

1 WLAN NIC up

1.1 Load module

ex:

```
/sbin/insmod booming_yourRedHatversion.o
```

1.2 Enable wireless lan driver

ex:

```
/sbin/iwpriv wlan0 enable
```

1.3 Set SSID

ex:

```
/sbin/iwpriv wlan0 wlan_para ssid=<your_ap_ssid>
```

1.4 Configure wlan0 IP address

ex:

```
/sbin/ifconfig wlan0 <your_ip_address> netmask <your_subnetmask> up
```

1.5 Test configuration

ex:

```
ping another_ip_address
```

2 WLAN NIC down

2.1 Shut down wlan0 net interface

```
/sbin/ifconfig wlan0 down
```

2.2 Disable wireless lan driver

```
/sbin/iwpriv wlan0 disable
```

2.3 Unload module

```
/sbin/rmmod booming_rh73.o
```

Appendix

1.Print help message of wireless LAN specific parameters:

ex:

```
iwpriv wlan0 wlan_para help
```

FQA

Q1.I can't find 'iwpriv' command

A1:Please rpm file:wireless-tools-xx-x.i386.rpm.

And then man iwpriv for more detail.

INSTALLATION FOR WINDOWS

The following section will assist you to install **Booming WLAN Card** successfully. You will plug in the **Booming** WLAN card and then install driver firstly , and finally set the network properties to accommodate resource sharing and select the type of wireless network that you want to install.

In order to establish your wireless network connection, make sure some steps below will be performed.

- Install the Access Point (AP) at first if you use Access Point network mode.
- Plug in the **Booming** wireless LAN card.
- Install the driver using the Installation CD.
- Install the network protocol(s) required to communicate on your network. Most likely you will need the TCP/IP protocol.

The **Booming** Wireless LAN Configuration Utility is installed by executing the “Setup.exe” file. Note also that some versions of Microsoft Windows operating systems require administrator to install software. If this is the case for your operating system, be sure that you have such privileges before executing the Setup.exe file. To upgrade an existing driver, it is not necessary to remove your **Booming** driver from your computer. Simply run the Setup.exe file to replace the existing driver with the latest version. After the new driver is installed, maybe you must restart the operating system (depend on the Windows’ OS).

Please follow the following steps one by one in order to install the **Booming WLAN Card** successfully.

For Windows 98SE/ME2000

Before you proceed with the installation, please notice following descriptions.

Note: The following installation was operated under Windows 2000. (Procedures will be the same for Windows 98SE/Me.)

● **Install the Driver**

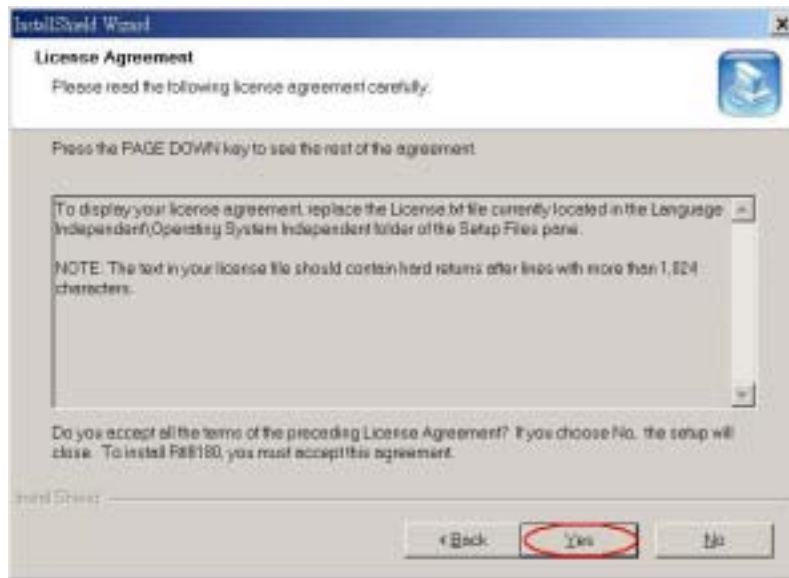
1. Insert the **Booming WLAN Card** into the slot of your computer, the system will automatically find the device and search for its driver.
2. Please select the "Win2000" folder (select the folder based on your computer's OS system) and the system will complete the driver installation automatically.

● **Install the Utility**

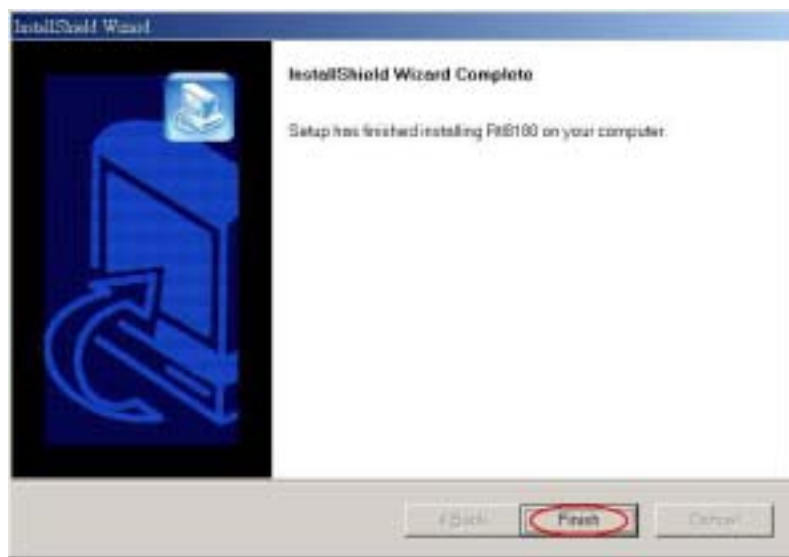
1. Insert the CD into the CD-ROM device and execute the "Setup.exe" program. The InstallShield Wizard box will appear, click "Next" to continue.



2. Accept the license agreement



3. Click "Finish" to complete the installation.



4. When you complete the Utility installation, a shortcut named "Rtl8180" will appear in the computer's desktop and a new icon will be displayed in the taskbar at the bottom of the screen.

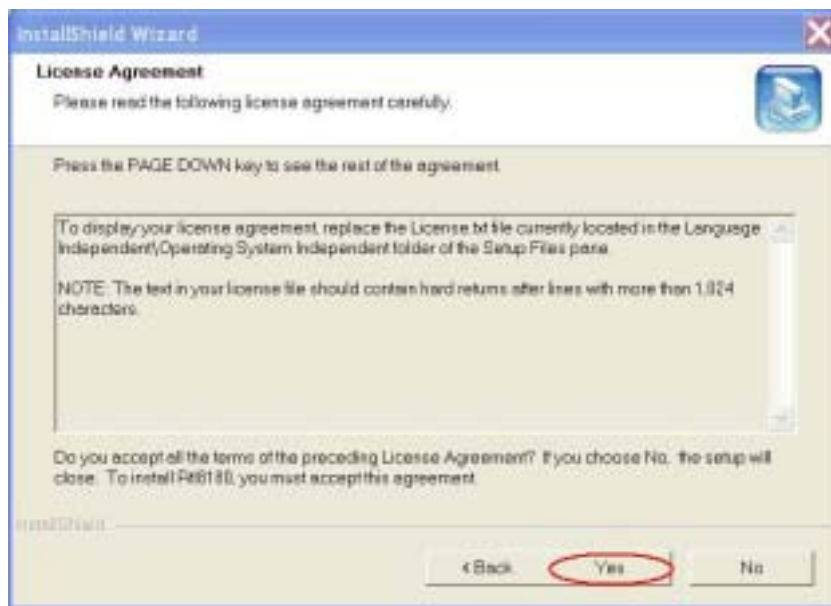


For Windows XP

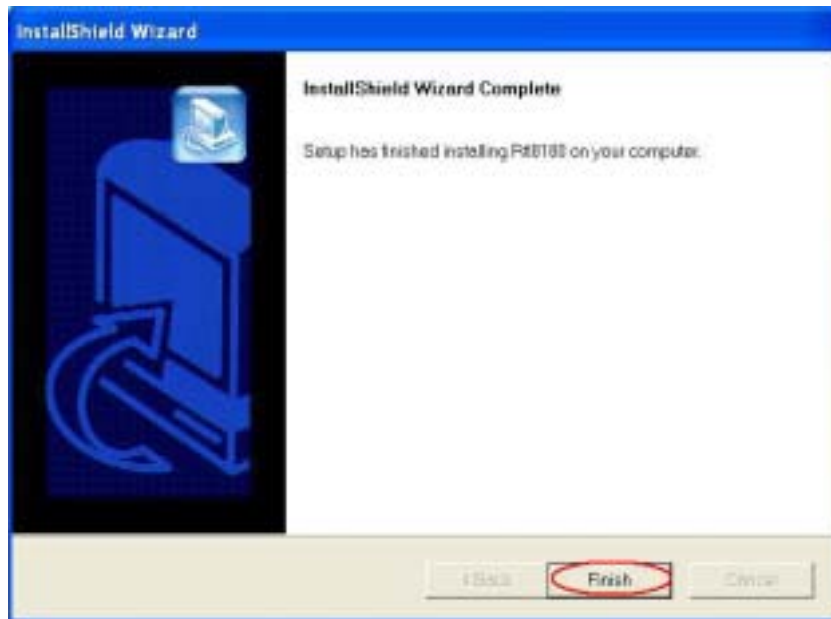
1. Insert the CD into the CD-ROM device and execute the "Setup.exe" program. The InstallShield Wizard box will appear, click "Next" to continue.



2. Accept the license agreement.



3. Click "Finish" to complete the installation.

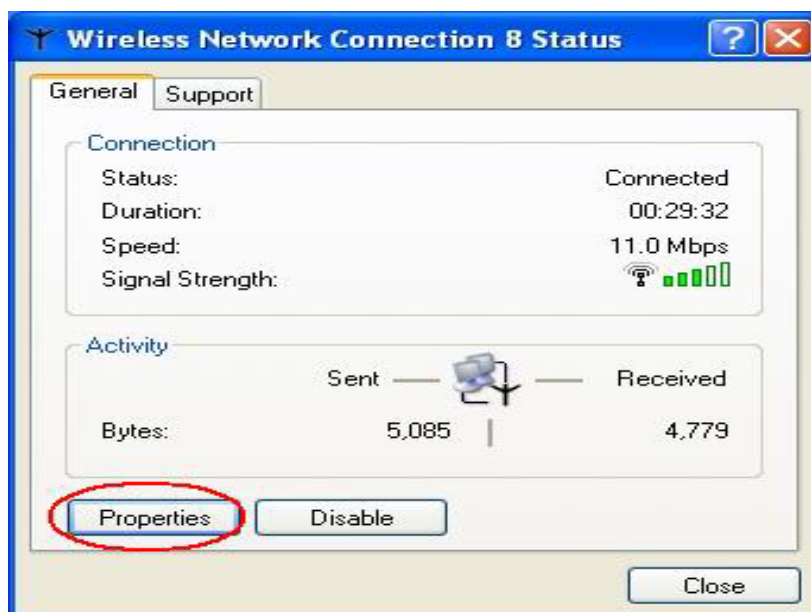


4. When you complete the Utility installation, a shortcut named "Rtl8180" will appear in the computer's desktop and a new icon will be displayed in the taskbar at the bottom of the screen.

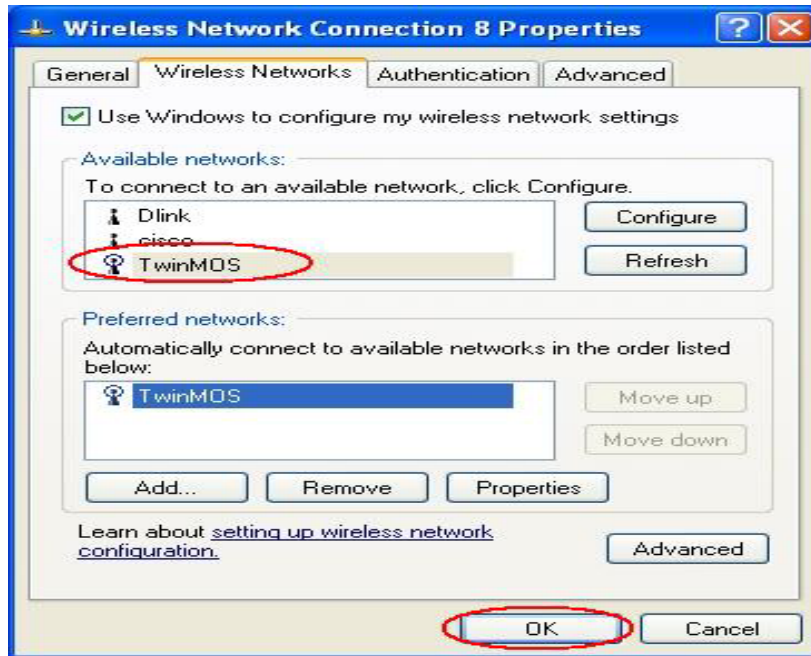
Using the Windows XP's Utility

To connect to your wireless network, please do the following:

Double-click the icon marked in red in the taskbar and you may start using the Windows XP's wireless utility



The “Connect to Wireless Network” window will contain a list of all the available Wireless Networks. Select the proper network for your needs. In this example, “TwinMOS” network was selected as shown.

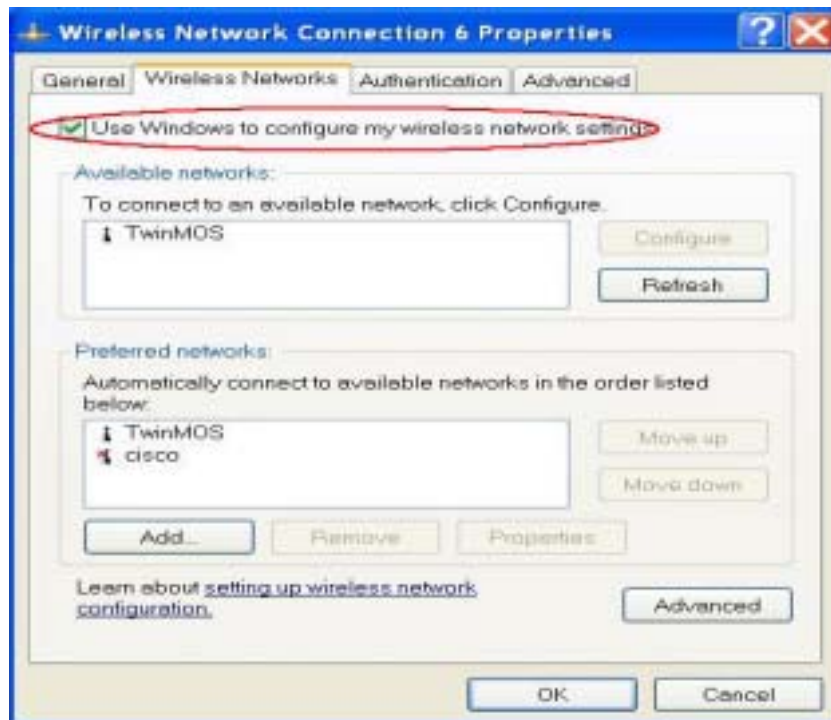


Using the Utility of *Booming* WLAN Card

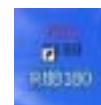
Get into Windows XP’s Utility, click “Advanced” button.



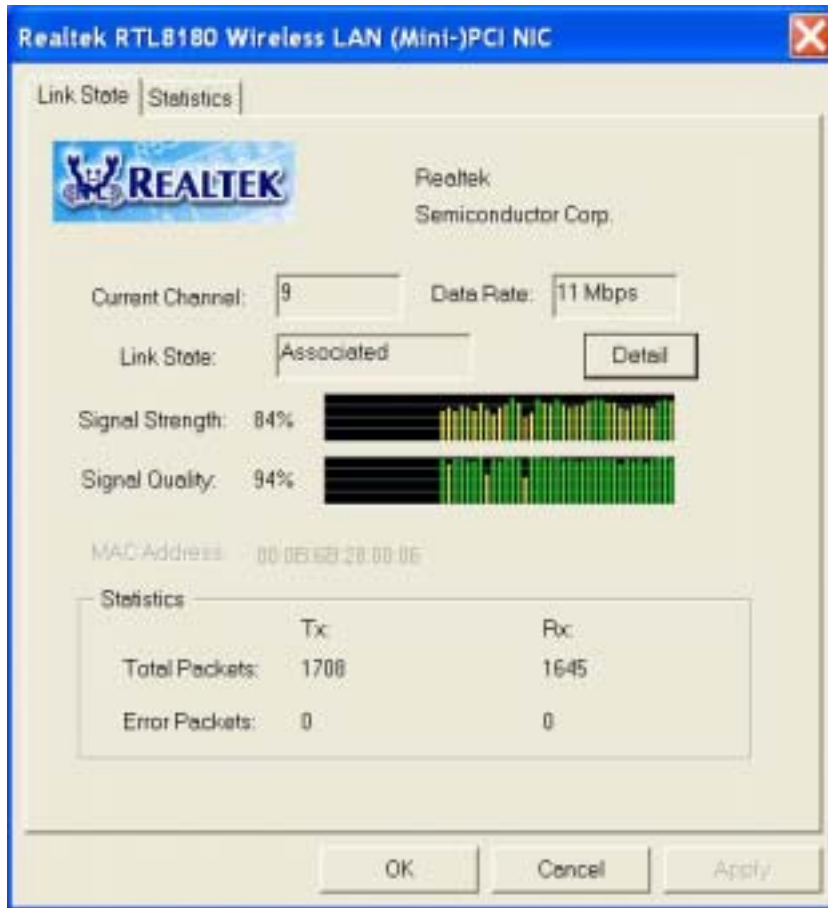
In “Wireless Network Connection Properties“ screen, uncheck the setting “Use Windows to configure my wireless network settings“. Note that if you want to change back to the Windows XP built-in utility, check the item again.



Double click the shortcut or click the icon and start using the WLAN Card .

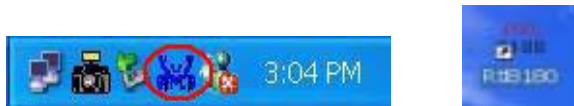


Note: If you don't disable the XP's Utility, you can still see the link status and statistics during communication process from the adapter's utility.

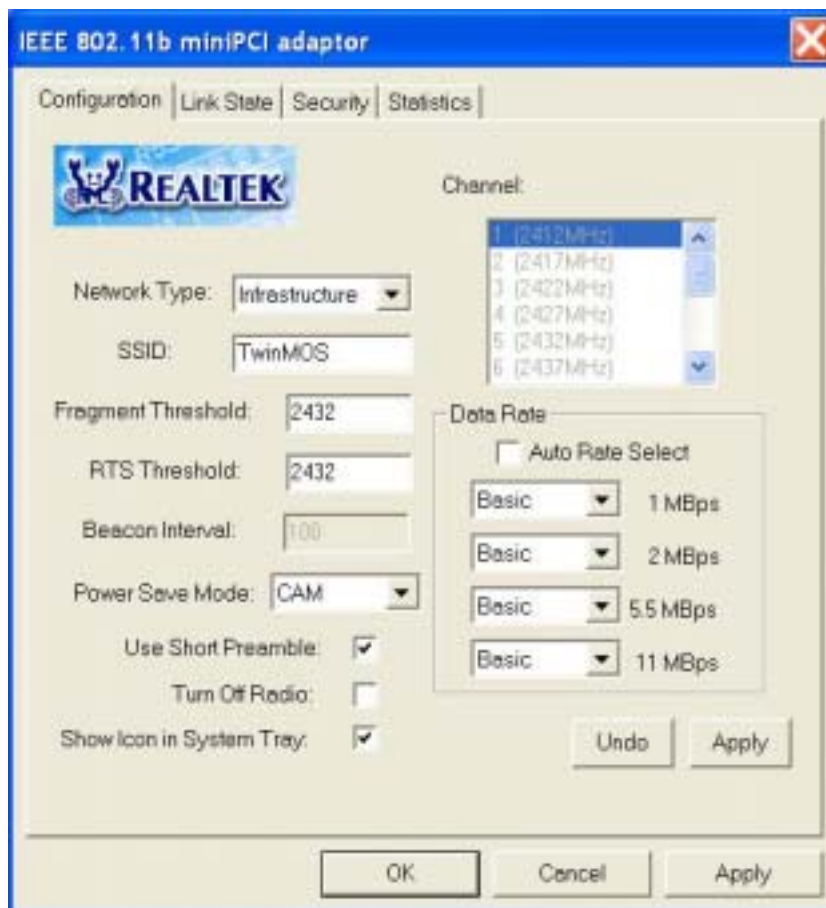


CONFIGURATION UTILITY

TwinMOS Booming WLAN Card uses the Configuration Utility as the management software. The utility provides the user an easy interface to change any settings related to the wireless adapter. When the computer is started, the Configuration Utility starts automatically and the system tray icon is loaded in the toolbar (see illustration below.) Clicking on the utility icon will start the Configuration Utility.

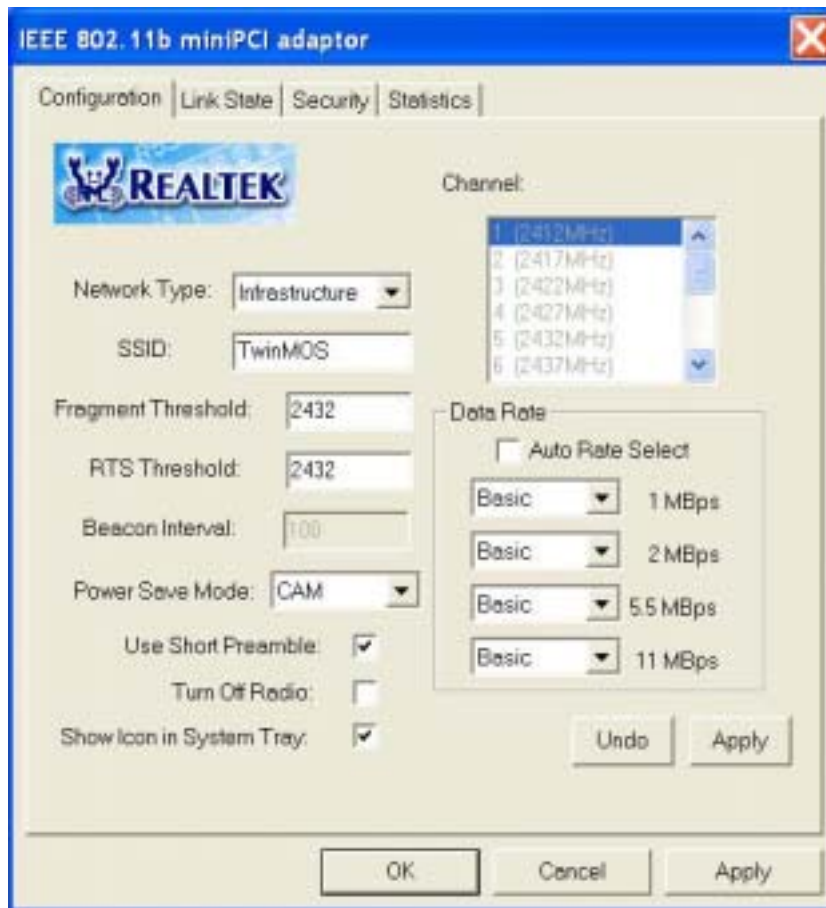


Double-click on the icon shown above. The screen below will be displayed.



Configuration Tab

Select the Configuration Tab to access the Configuration menu, as shown below. You can make changes to any of the fields shown below, without the need to restart your computer.



Network Type

The *Booming WLAN Card* can operate in one of two modes, which are specified in the Mode field of the Configuration menu. Clicking the down arrow at the right of the Mode field displays the available modes.

- **Ad-Hoc** - This is the 802.11b Ad-Hoc mode of operation. In “Ad-Hoc” mode, only one wireless “cell” is supported for each different NETWORK NAME. All communication is done from client to client without the use of an Access Point. “Peer-to-Peer” networking uses the same NETWORK NAME for the wireless adapters in establishing the network connection. When “Ad-Hoc” mode is selected, the utility will provide a selection for setting the channel.
- **Infrastructure** - This mode of operation requires the presence of an 802.11b Infrastructure. All communication is done through the Infrastructure, which relays packets to other wireless clients as well as to nodes on a wired Ethernet network.

SSID

The name of the wireless network. This name cannot be longer than 32 characters. The default value is “any”, which will automatically scan and connect the best performance Access point nearby. You may specify a SSID for the adapter and then only the device with the same SSID can interconnect to the adapter.

Fragement Threshold

The value defines the maximum size of packets, any packet size larger than the value will be fragmented. If you have decreased this value and experience high packet error rates, you can increase it again, but it will likely decrease overall network performance. Select a setting within a range of 256 to 2432 bytes. Minor change is recommended.

RTS Threshold

Minimum packet size required for an RTS (Request To Send). For packets smaller than this threshold, an RTS is not sent and the packet is transmitted directly to the WLAN. Select a setting within a range of 0 to 2432 bytes. Minor change is recommended

Beacon Interval

This value specifies the duration between beacon packets (milliseconds). The beacon packets include the adapter's information and are broadcasted to the WLAN network periodically. The beacon period is fixed in 100ms.

Power Save

- **CAM(Continuous Access Mode)** – Adapter will always set in active mode.
- **Max** – Enable the adapter in the power saving mode when it is idle.
- **Fast** – Enable the adapter in the power saving mode when it is idle, but some components of the adapter is still alive. In this mode, the power consumption is larger than “Max“ mode.

Turn Off Radio

When the setting is checked, the wireless connection of the adapter will be disabled.

Use Short Preamble

The preamble defines the length of the CRC block for communication between the Access Point and the adapter. High network traffic areas should use the shorter preamble type.

Show Icon in System Tray

Enable or disable the icon shown in the taskbar.

Channel

When communicating in Ad-Hoc mode, you must specify a channel on which communications will take place. This field is grayed in infrastructure mode because the Access Point automatically selects the channel.

Data Rate

Auto Rate Select- When it is enabled, the device will choose the most suitable transmission rate automatically.

1, 2, 5.5 ,11 MBps

Not Used- Prohibits the device from operating at the specified data rate.

Used – Allows the device operating at the specified data rate

Basic – Restrict the device to operate at least at the specified data rate. At least one kind of data rate has to be set “Basic“.

Apply

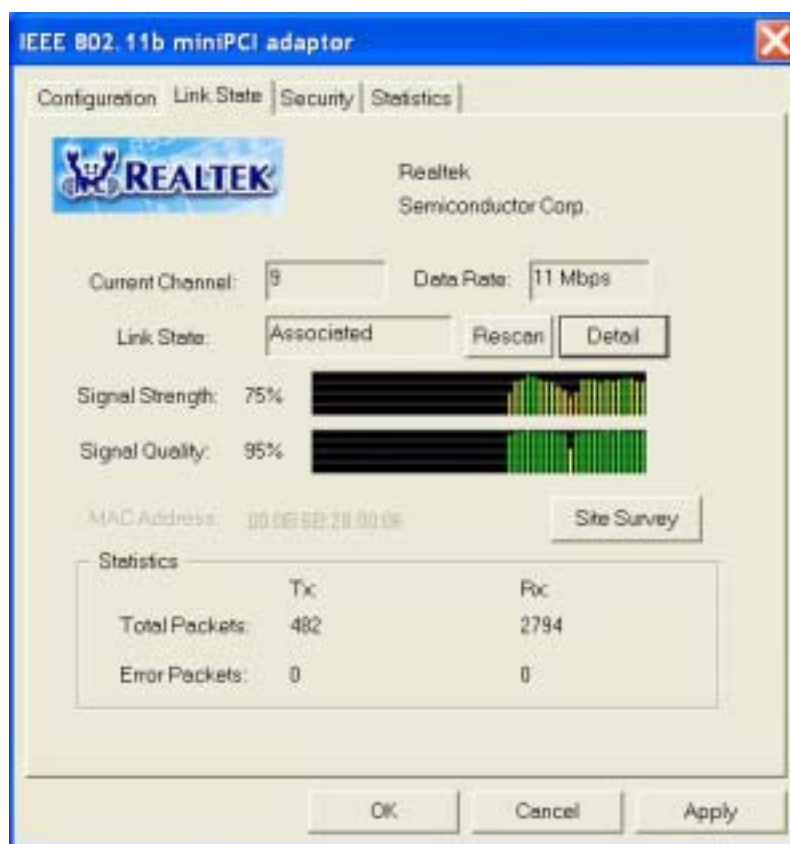
Click “Apply” button to save and implement the new settings.

Cancel

Click “Cancel” button to cancel the modification of the settings.

Link State Tab

The Link State Tab displays the current state of your wireless adapter.



Current Channel

Shows the channel on which the connection is made. In infrastructure mode, this number changes as the radio scans the available channels.

Link State

Shows the status of the connection.

Checking Status – Represents the adapter is checking the status of the wireless device.

Not Associated – Represents the connection is interrupted. You may press “Rescan“ button to reconnect the wireless device.

Associated – Represents the adapter is successfully linking to the wireless device.

Data Rate

Shows the highest transmit rate of the current association.

Rescan button

Click this button to scan the Access Point or Adapter which the adapter connected before or intends to connect.

Detail

A screen will appear when you press the button. In this screen, you may see all the parameters of the adapter and also the link status.

Signal Quality

This bar indicates the quality of the link. The higher the percentage, the better the quality.

Signal Strength

This bar shows the signal strength level. The higher percentage shown in the bar, the more radio signal been received by the adapter. This indicator helps to find the proper position of the wireless device for quality network operation.

MAC Address

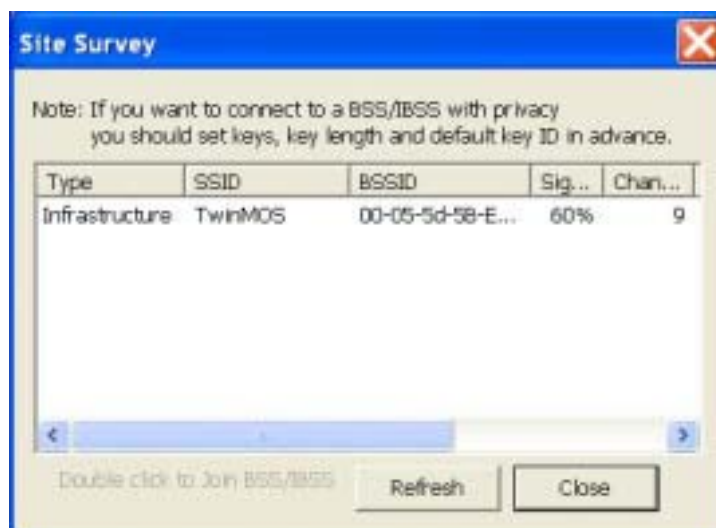
Shows the MAC Address of the adapter.

Statistics

Shows the total amounts of data packets that have been successfully/unsuccessfully transmitted or received by the adapter.

Site Survey button

This screen shows all Access Points or Adapters nearby when operating in Ad-Hoc mode. Click “Refresh” button to collect the SSID and Channel information of all the wireless devices nearby. If you want to connect to any device on the list, double-click the item on the list, and the adapter will automatically connect to the selected device.



Security Tab

“Security” tab allows you to enhance the security of a network. Every station in a secured network should enable the Encryption function and the values of the Network Key should be the same.

WEP is an authentication algorithm, which protects authorized Wireless LAN users against eavesdropping. WEP has been found that it has some security problems. TKIP is a temporary quick-fix method defined in IEEE 802.11i standard to quickly overcome the inherent weaknesses in WEP security. AES has been developed to ensure the highest degree of security and authenticity for digital information and it is the most advanced solution defined by IEEE 802.11i for the security in the wireless network.



Data Encryption

No Encryption – Disable the WEP Data Encryption.

WEP – Enable the WEP Data Encryption. When the item is selected, you have to continue setting the WEP Key Length and the encryption keys.

Realtek TKIP – Enable the TKIP Data Encryption. When the item is selected, you have to continue setting the TKIP Key Length and the encryption keys.

Realtek AES – Enable the AES Data Encryption. When the item is selected, you have to continue setting the AES Key Length and the encryption keys.

Auth Algorithm

This setting has to be consistent with the wireless devices which the adapter intends to connect.

Open System – No authentication is needed among the wireless devices.

Shared Key – Only wireless devices using a shared key (WEP Key, TKIP Key or AES Key identified) are allowed to connecting each other. Setup the same key as the wireless devices which the adapter intends to connect.

Auto Switch – Auto switch the authentication algorithm depending on the wireless devices which the adapter is connecting to.

Default Key ID

Select one of the keys (1~4) as the encryption key.

Key Length

You may select the 64-bit or 128-bit to encrypt transmitted data. Larger key length will provide higher level of security, but the throughput will be lower.

Key1~Key4

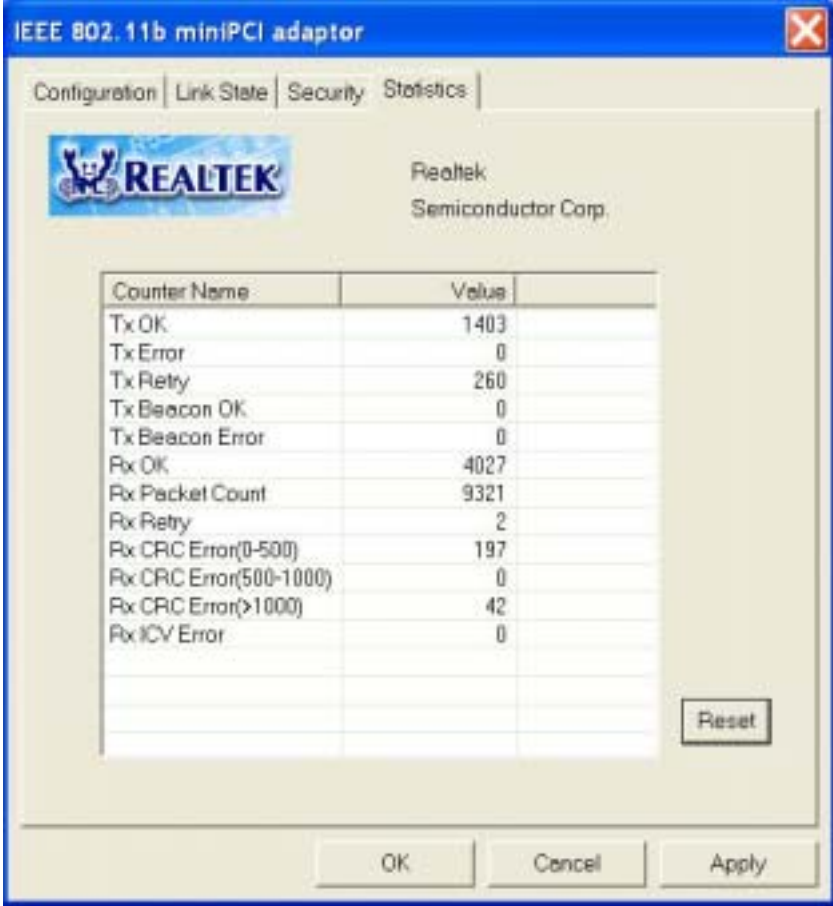
The keys are used to encrypt data transmitted in the wireless network. Fill the text box by following the rules below.

64-bit – Input 10 digit Hex values (in the “A-F”, “a-f” and “0-9” range) as the encryption keys. For example: “0123456aef”.

128-bit – Input 26 digit Hex values (in the “A-F”, “a-f” and “0-9” range) as the encryption keys. For example: “01234567890123456789abcdef”.

Statistics Tab

In the “*Statistics*”, you can get the real time information about the packet transmission and receiving status.



The screenshot shows a window titled "IEEE 802.11b miniPCI adaptor" with a "Statistics" tab selected. The window displays the Realtek logo and "Realtek Semiconductor Corp." above a table of statistics. The table has two columns: "Counter Name" and "Value". The data in the table is as follows:

Counter Name	Value
Tx OK	1403
Tx Error	0
Tx Retry	260
Tx Beacon OK	0
Tx Beacon Error	0
Rx OK	4027
Rx Packet Count	9321
Rx Retry	2
Rx CRC Error(0-500)	197
Rx CRC Error(500-1000)	0
Rx CRC Error(>1000)	42
Rx ICV Error	0

At the bottom right of the table area is a "Reset" button. At the bottom of the window are "OK", "Cancel", and "Apply" buttons.

TROUBLESHOOTING

If you encounter some problems while installing the *Booming* WLAN card or you want to confirm whether your adapter is installed properly or not, we have listed the procedure for checking the various components after you have installed the adapter. In first part of Troubleshooting, we have suggested the users to check the various properties of the card to check the proper installation. In second section, we have listed the various problems that you may encounter during the installation and have also listed the possible solution. Check the first part to guess the probable reason of unsuccessful installation.

Please check the followings if you encounter some problem while installing the *Booming WLAN Card* or yours *Booming WLAN Card* are non-functional.

In Windows 2000:

To check that the *Booming WLAN Card* is installed properly, please do the following:

1. Check the Windows 2000 Diagnostics. See if there is any conflict in the Resource allocation or the I/O Address, IRQ allocations. If you find that the IRQ or I/O Addresses are already assigned to some other devices, you must change that value.
2. Go to the Control Panel. Double click on the Network Adapter, you will see *Booming WLAN Card*. Double clicking on that will show you the status of the *Booming WLAN Card*. If there are no error signs, the adapter has been installed properly.

In Windows XP:

To check that the *Booming WLAN Card* is installed properly, please do the following:

1. Go to START>CONTROL PANEL. Double-click on Network Connections. Right-click on LAN. Click Properties.
2. The *Booming WLAN Card* will appear, indicating proper installation.

TECHNICAL SPECIFICATIONS

Networking Characteristics

Compatibility	<ul style="list-style-type: none"> ● IEEE 802.11 Standard for WLAN (DSSS) ● Internal Wi-Fi certified by TwinMOS
Host OS	Windows 98/98SE/ME/2000/XP/Linux
Media Access Protocol	CSMA/CA with ACK
Network Protocol	TCP/IP, IPX, NetBEUI

RF Characteristics

Frequency Range	2.400-2.4835 GHz, Direct Sequence Spread Spectrum (DSSS)
Operating Channels	<ul style="list-style-type: none"> ● 1-11 United States (FCC) ● 1-11 Canada (DOC) ● 1-14 Japan (MKG) ● 1-13 Europe (Except Spain and France) (ETSI)
Modulation Technique	<ul style="list-style-type: none"> ● 11 Mbps: CCK ● 5.5 Mbps: CCK ● 2 Mbps: DQPSK ● 1 Mbps: DBPSK
Spreading	11-chip Barker Sequence
Transmit Power	14 dBm @ Nominal Temp Range
Receive Sensitivity	Nominal Temp Range : 11 Mbps 10^{-5} BER @ -84 dBm, minimum
Security	<ul style="list-style-type: none"> ● 64/128-bit WEP Encryption ● 64/128-bit TKIP Data Encryption ● 64/128-bit AES Data Encryption
Operating Range	Open Space : 100 ~ 300m; Indoor: 30m ~ 100m The transmission speed varies in the surrounding environment.
EMC Certification	FCC Class B part 15B, 15C; R&TTE

NOTE

This equipment has been tested and found to comply with the limits for a Class B digital device, pursuant to Part 15 of the FCC Rules. These limits are designed to provide reasonable protection. This equipment generates, uses and can radiated radio frequency energy and, if not installed and used in accordance with the instructions, may cause harmful interference to radio communications. However, there is no guarantee that interference will not occur in a particular installation. If this equipment does cause harmful interference to radio or television reception, which can be determined by turning the equipment off and on, the user is encouraged to try to correct the interference by one or more of the following measures:

- Reorient or relocate the receiving antenna.
- Increase the separation between the equipment and receiver.
- Connect the equipment into an outlet on a circuit different from that to which the receiver is connected.
- Consult the dealer or an experienced radio/TV technician for help.

Changes or modifications not expressly approved by the party responsible for compliance could void the user's authority to operate the equipment.

This equipment complies with FCC radiation exposure limits set forth for an uncontrolled environment. In order to avoid the possibility of exceeding the FCC radio frequency exposure limits, human proximity to the antenna shall not be less than 20cm (8 inches) during normal operation.