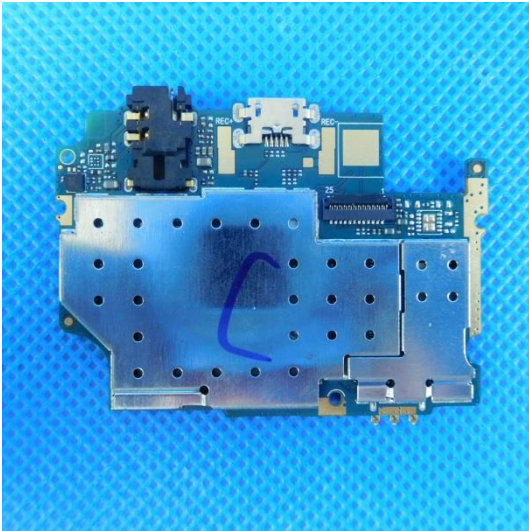
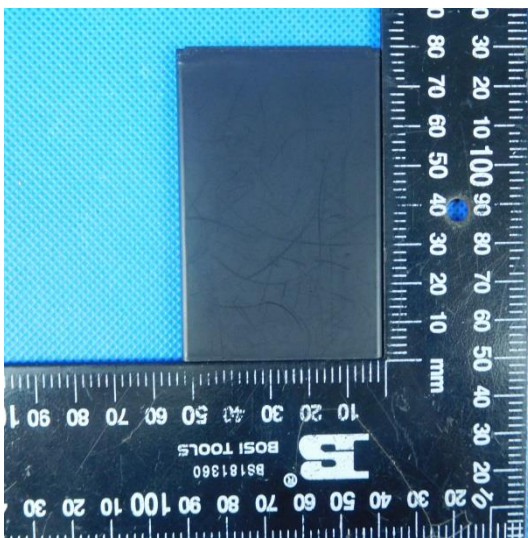
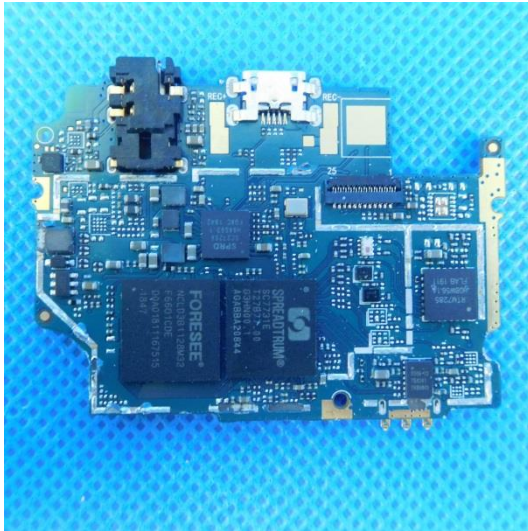


Model: M5

Internal photos of the EUT









Li-ion Battery

Model: S508

Voltage: DC3.8V Capacity: 2000mAh
7.6Wh

CAUTION

MAY EXPLODE IF DAMAGED OR DISPOSED OF IN FIRE
DO NOT SHORT-CIRCUIT
DO NOT DISASSEMBLE WITHOUT AUTHORIZATION
USE SPECIFIED ADAPTER ONLY

CHARGING ENVIRONMENT
TEMPERATURE: 0°C-30°C



Made in China