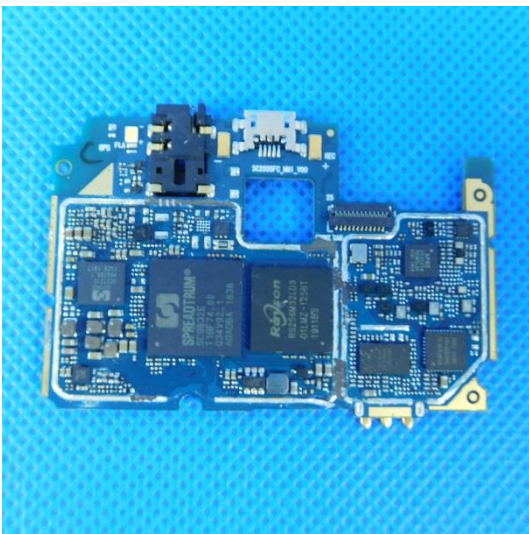
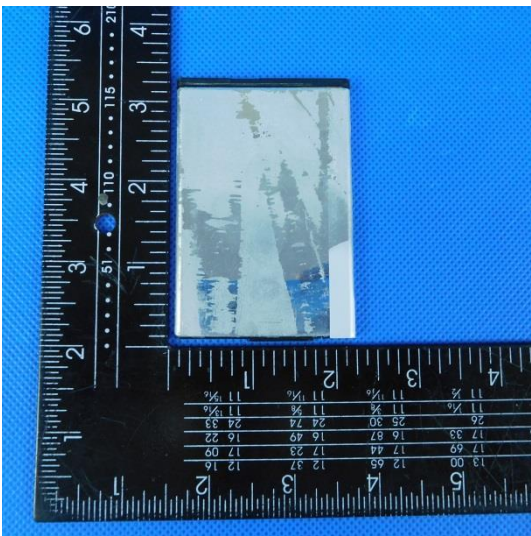


Model:K55QL

Internal photos of the EUT









Li-ion Battery

Model: ES5506

Voltage: DC3.8V Capacity: 2500mAh
9.5Wh

CAUTION

MAY EXPLODE IF DAMAGED OR DISPOSED OF IN FIRE
DO NOT SHORT CIRCUIT
DO NOT DISASSEMBLE WITHOUT AUTHORIZATION
USE SPECIFIED ADAPTER ONLY

CHARGING ENVIRONMENT
TEMPERATURE: 0°C-50°C



Made In China