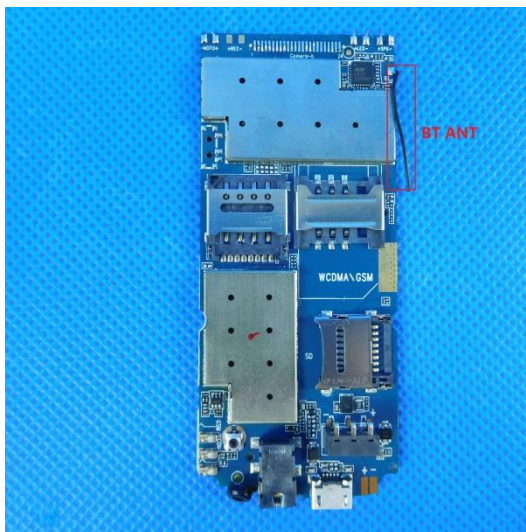
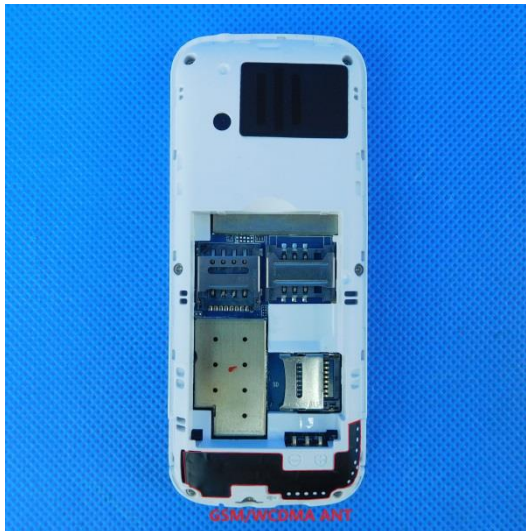
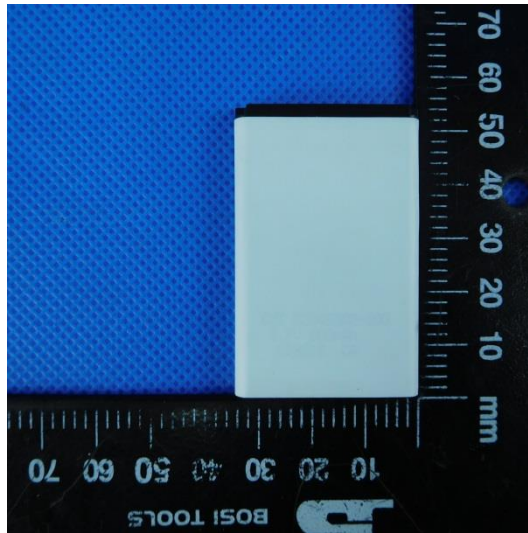
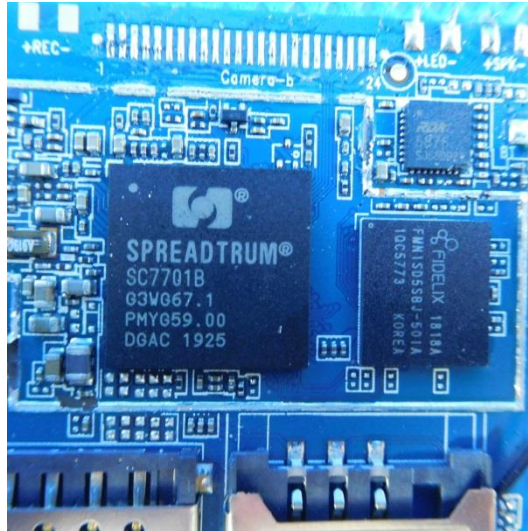


Model:L4G

**Internal photos of the EUT**







⊕ ⊖

### Li-ion Battery

---

Model: T900C  
Voltage: DC3.7V  
Capacity: 800mAh  
2.96Wh

**CAUTION**

MAY EXPLODE IF DAMAGED OR DISPOSED OF IN FIRE  
DO NOT SHORT-CIRCUIT  
DO NOT DISASSEMBLE WITHOUT AUTHORIZATION  
USE SPECIFIED ADAPTER ONLY

CHARGING ENVIRONMENT  
TEMPERATURE: 0°C-50°C

Made in China

