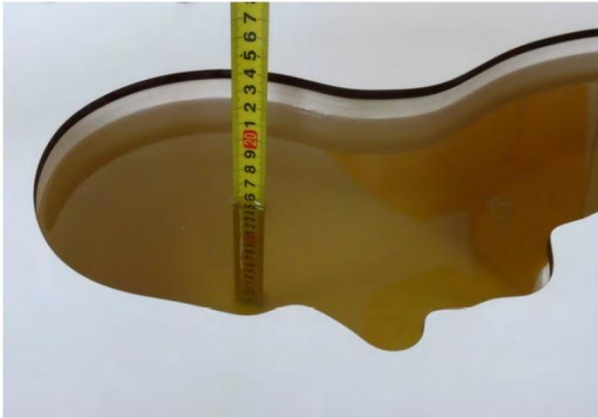
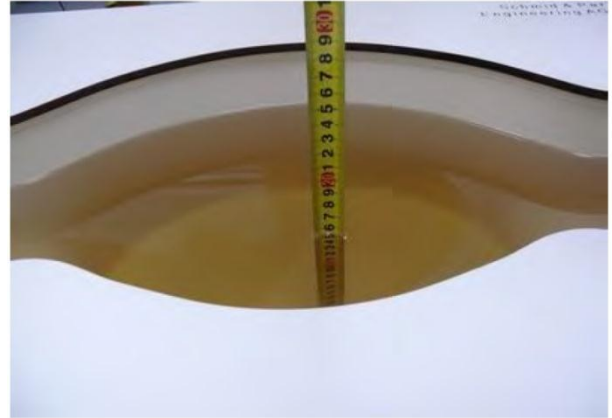


### 16. Test Setup Photos



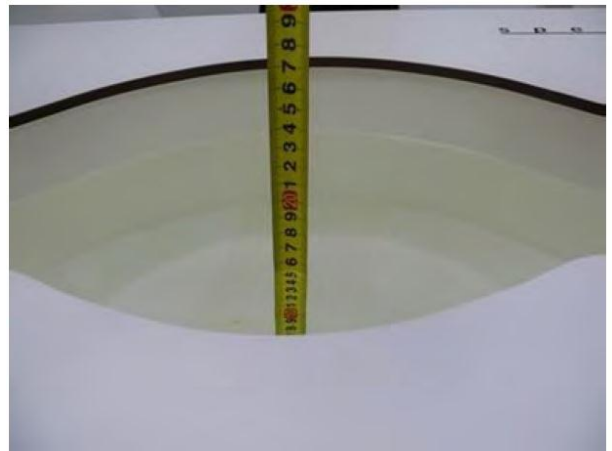
Liquid depth in the head phantom (835MHz)



Liquid depth in the body phantom (835MHz)



Liquid depth in the head phantom (1900MHz)



Liquid depth in the body phantom (1900MHz)



Liquid depth in the head phantom (2450MHz)



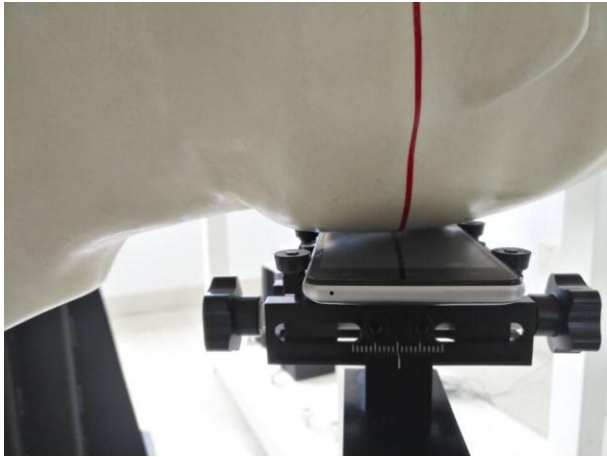
Liquid depth in the body phantom (2450MHz)



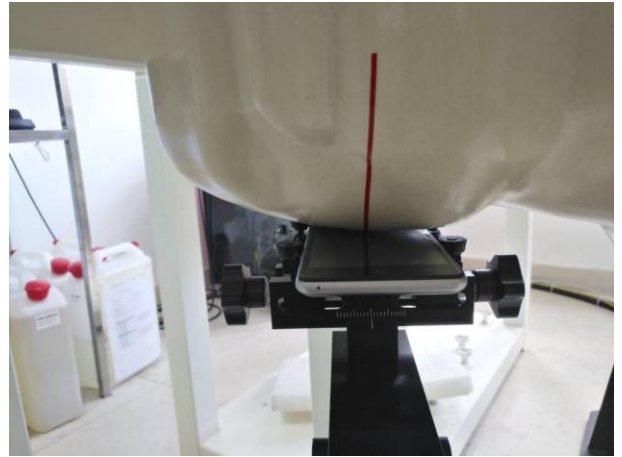
Liquid depth in the head phantom (2600MHz)



Liquid depth in the body phantom (2600MHz)



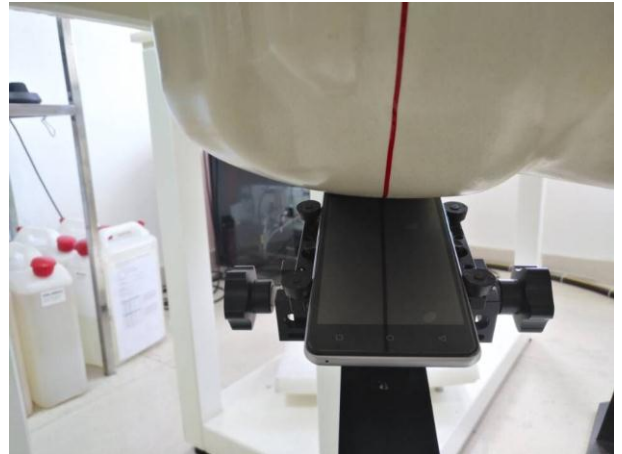
Left Head Touch



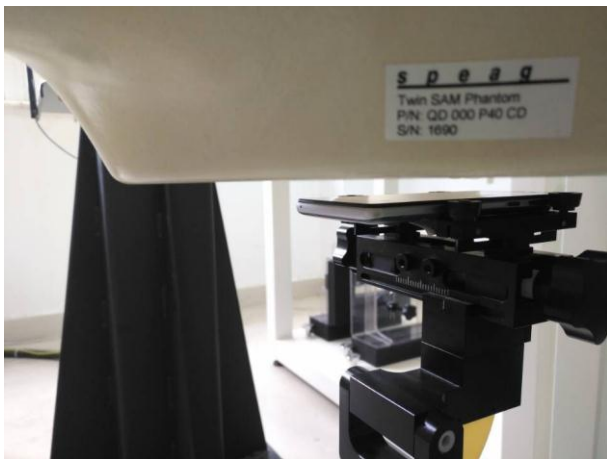
Right Head Touch



Left Head Tilt (15°)



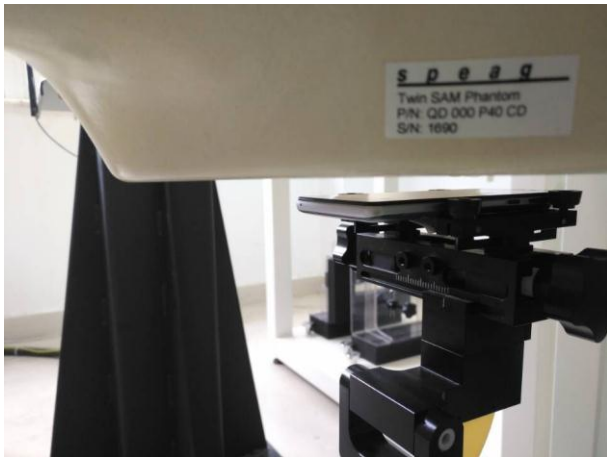
Right Head Tilt (15°)



Body-worn Front Side (10mm)



Body-worn Rear Side (10mm)



Hotspot mode - Front Side (10mm)



Hotspot mode - Rear Side (10mm)



Hotspot mode - Left Side (10mm)



Hotspot mode - Right Side (10mm)



Hotspot mode - Top Side (10mm)



Hotspot mode - Bottom Side (10mm)

## 17. External and Internal Photos of the EUT

Please reference to the report No.: TRE1706030101.

-----End of Report-----