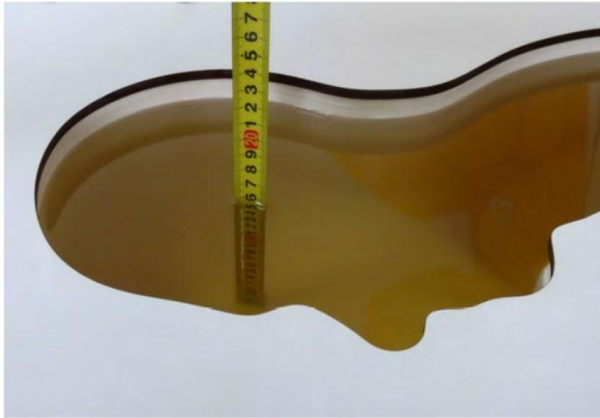


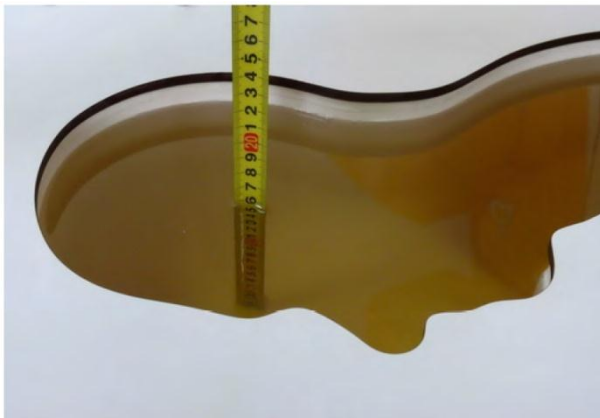
16. TestSetup Photos



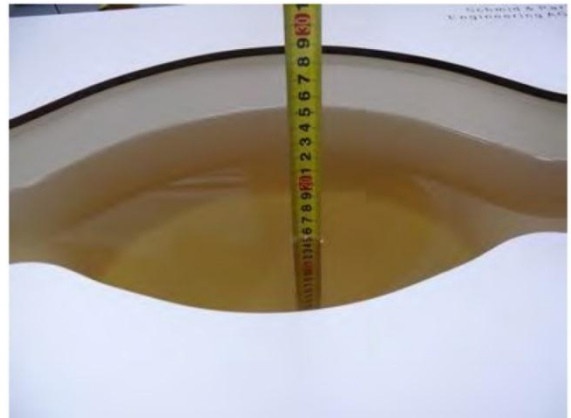
Liquid depth in the head phantom (750MHz)



Liquid depth in the body phantom (750MHz)



Liquid depth in the head phantom (835MHz)



Liquid depth in the body phantom (835MHz)



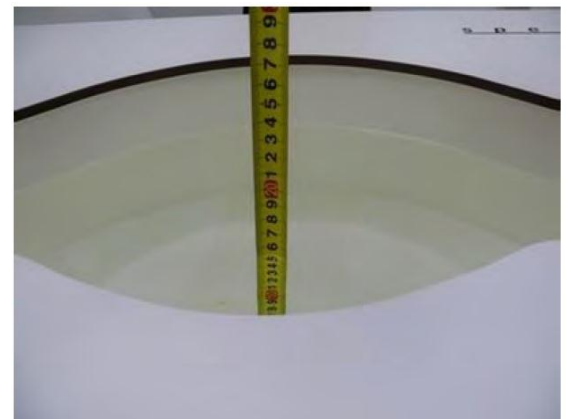
Liquid depth in the head phantom (1750MHz)



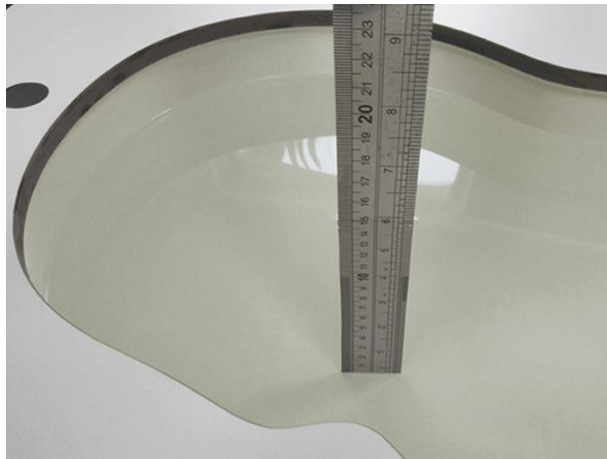
Liquid depth in the body phantom (1750MHz)



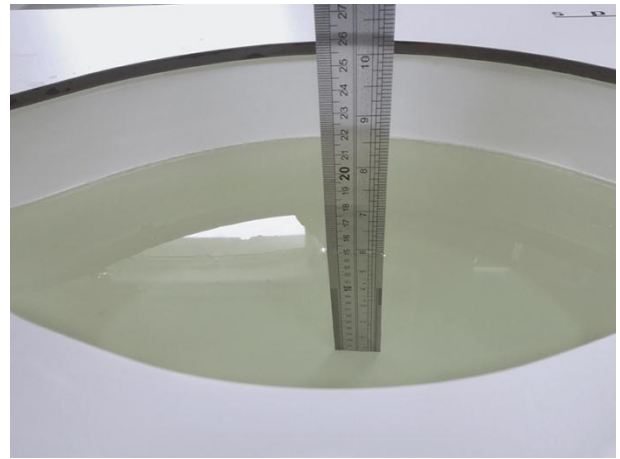
Liquid depth in the head phantom (1900MHz)



Liquid depth in the body phantom (1900MHz)



Liquid depth in the head phantom (2450MHz)



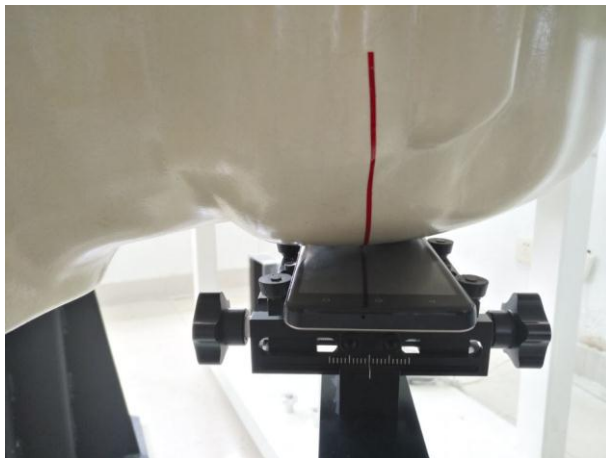
Liquid depth in the body phantom (2450MHz)



Liquid depth in the head phantom (2600MHz)



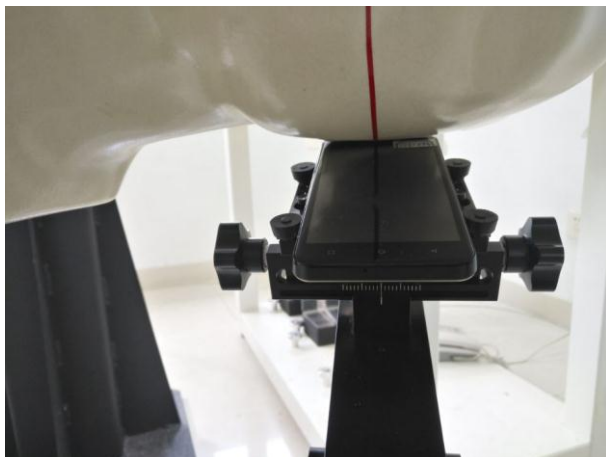
Liquid depth in the body phantom (2600MHz)



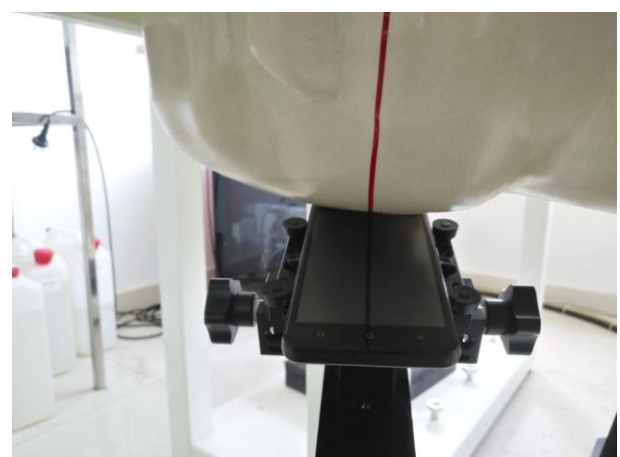
Left Head Touch



Right Head Touch



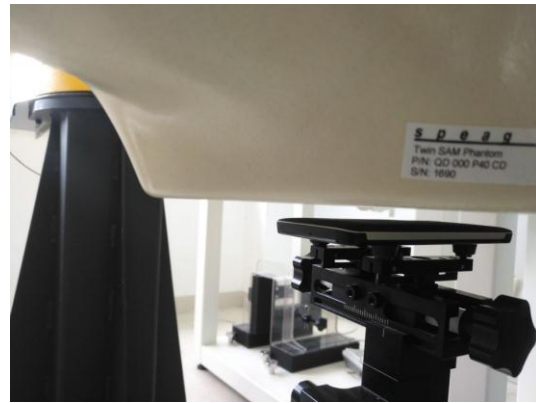
Left Head Tilt (15°)



Right Head Tilt (15°)



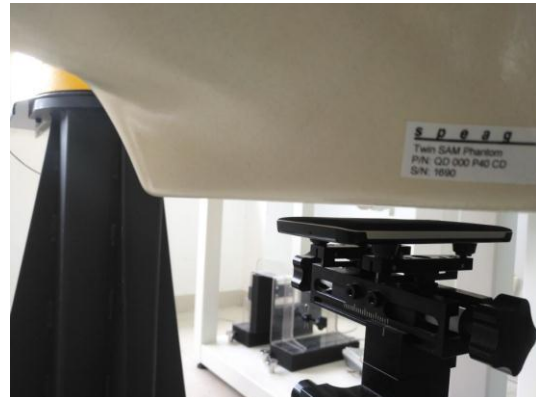
Body-worn Front Side (10mm)



Body-worn Rear Side (10mm)



Front Side (10mm)



Rear Side (10mm)



Left Side (10mm)



Right Side (10mm)



Top Side (10mm)



Bottom Side (10mm)

17. External and Internal Photos of the EUT

Please reference to the report No.: TRE170707601

-----End of Report-----