

# USER'S GUIDE

( Model No : SP-1001)

<input checked="" type="checkbox"/>	WIRELESS LAN CARD (PCMCIA TYPE)
<input type="checkbox"/>	WIRELESS LAN CARD (USB TYPE)
<input checked="" type="checkbox"/>	SETUP UTILITY(CD)
<input checked="" type="checkbox"/>	USER'S GUIDE
<input type="checkbox"/>	USB CABLE
<input type="checkbox"/>	RF CABLE



: MAKE AN OFFER FORM SHIN-OH ELECTRONICS CO., LTD. IN KOREA

"FCC RF exposure compliance requirements: This device and its antenna(s) must not be co-located or operating in conjunction with any other antenna or transmitter"

---

## WARNING

This device complies with Part 15 of the FCC Rules. Operation is subject to the following two conditions: (1) this device may not cause harmful interference, and (2) this device must accept any interference received, including interference that may cause undesired operation.

Caution: changes or modifications not expressly approved by the party responsible for compliance could void the user's authority to operate the equipment.

## Features and Benefits

LANCASTER(SP-1001) Wireless LAN PC card is fully Compatible with IEEE 802.11b Standard and Supports a high Data rate up to 11Mbps. "LANCASTER(SP-1001) Wireless LAN PC Card" will operate in 2.4 GHz Direct Sequence Spread Spectrum (DSSS) for wireless networks in the home or office environment. You can use internet within wireless Network at anytime in anyplace. In addition, the EnGenius Wireless LAN PC Card uses a 64/128-bit WEP Encryption for a secure network connection. The LANCASTER (SP-1001) Wireless LAN PC Card is compatible with Windows 98, ME, 2000, and XP.

### Table of contents

---

#### Table of contents

1. DRIVER Installation .....	1
1-1. Software Contents .....	1
1-2. DRIVER INSTALL .....	1
2. HARDWARE SETUP .....	3
2-1. Hardware Installation for Wireless LAN Card .....	3
3. SOFTWARE SETUP .....	3
3-1. Software Installation for Wireless LAN Card .....	3
4. WIRELESS UTILITY SETUP .....	7
4-1. SSID Setup .....	7
4-2. Network Type Setup .....	7
4-3. Use WEP (Wired Equivalent Privacy) .....	8
4-4. Link Quality Test .....	9
5. CERTIFICATE OF WARRANTY	

## 1. DRIVER Installation

---

### 1-1. Software Contents

Install CD : This mainboard will be shipped with a Support CD which contains those necessary driver files, Application Softwares and some helpful utilities. It is a user-friendly, auto-run CD which will open itself up in a CD-ROM automatically.

Contents of Install CD : For this Wireless Lan card, user will be able to find in the Install CD the following

Drivers and utilities :

1. LANCASTER DRIVER ( Wireless lan card driver )
  2. LANCASTER Wireless Settings (Setting and Monitor Utility)
  3. USER'S GUIDE
- 

### 1-2. DRIVER INSTALL

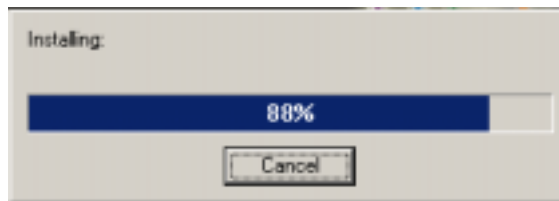
1. Open up the Install CD : Please put the Support CD enclosed in your Wireless lan card package into the CD-ROM drive. In a few seconds, the Main Menu will automatically appear, displaying the contents to be installed for this driver:
2. In case your system does not open the Support CD automatically, please click to the following path to enter the Main Installation Menu:  
D: \ DRIVER>LANCASTER.exe (assuming that your CD-ROM Drive is Drive D)
3. InstallShield Wizard will pop up to guide you to the Wireless Lan driver installation. Click "Next" button to continue.

# 1. DRIVER Installation

---



## 4. Installing



## 5. Installshield wizard complete

The InstallShield Wizard has successfully installed  
Click Finish to exit the wizard



## 2. HARDWARE SETUP

---

### 2-1. Hardware Installation for Wireless LAN Card

To install the Wireless LAN card, please do the following:

1. Find an available Type II or Type III PCMCIA slot in your notebook computer.
2. With the PCMCIA adapter's 68-pin connector facing the PCMCIA slot and its label facing up, slide the PCMCIA adapter completely into the PCMCIA slot.

## 3. SOFTWARE SETUP

---

### 3-1. Software Installation for Wireless LAN Card

1. Insert the 11Mbps Wireless PC Card into a standard type II PCMCIA slot in your notebook.



2. Windows 95/98/ME/2000/XP will automatically detect the new hardware and prompt you to install the driver needed.

### 3. SOFTWARE SETUP

---



3. Select “Display a list of the known drivers for this device so that I can choose A specific driver” and click Next.



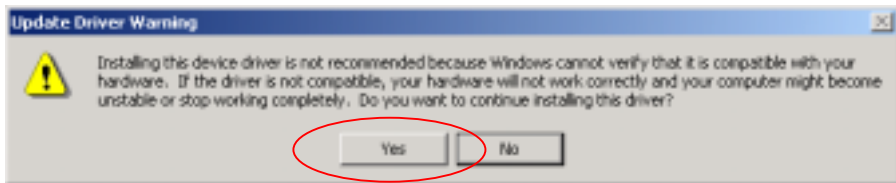
4. Select “Network adapters” and click Next.

### 3. SOFTWARE SETUP

---



4. First : Select “SHIN-OH ELECTRONICS CO., LTD.” in Manufacturers  
second : Select “SHIN-OH LANCASTER Wireless LAN PC Card”  
IF YOU MUST BE SELECT : click “Next”



5. Update Driver Warning : click “Yes”.

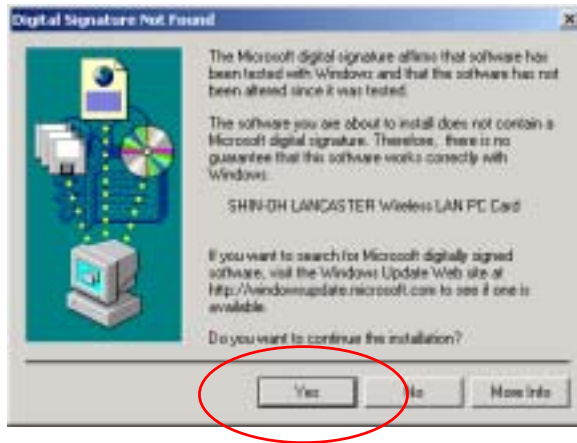


6. Start Device Driver Installation : click “Next”



### 3. SOFTWARE SETUP

---



6. Digital Signature Not Found : click “Yes”



7. Click Finish to complete the software installation.

8. Restart the computer.

## 4. WIRELESS UTILITY SETUP

---

### 4-1. SSID Setup

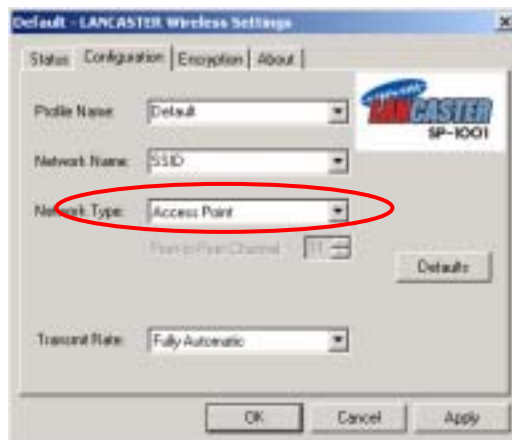
The SSID is a unique ID given to the Access Point. Wireless clients associating to any Access Point must have the same SSID. Select Configuration as and enter a Network Name (Access Point) you desire to connect with.



### 4-2. Network Type Setup

Infrastructure mode : selete Access Point

Ad-Hoc mode : selete Pear to Pear



## 4. WIRELESS UTILITY SETUP

---

### 4-3. Use WEP (Wired Equivalent Privacy)

To prevent unauthorized wireless stations from accessing data transmitted over the network, the 11Mbps Wireless LAN PC Card offers highly secure data encryption, known as WEP. If you require high security in transmission, please select the Enable item and click the Key List button. The Wireless LAN PC Card supports two types of Encryption Key length: 64-Bits and 128-Bits. You may identify up to 4 different encryption keys and select one of them to encrypt your transmission

data. The key value of your choice may either be:

For 64-Bits encryption:

Five alphanumeric characters in the range of “a-z”, “A-Z” and “0-9” (e.g. MyKey), or:

10 digit hexadecimal values in the range of “A-F” and “0-9”, preceded by the characters “0x” values (e.g. 0x11AA22BB33).

For 128-Bits encryption:

13 alphanumeric characters in the range of “a-z”, “A-Z” and “0-9” (e.g. WEPencryption).

26 digit hexadecimal values in the range of “A-F” and “0-9”, preceded by the characters “0x” values (e.g. 0x11AA22BB33123456789ABCDEFF)

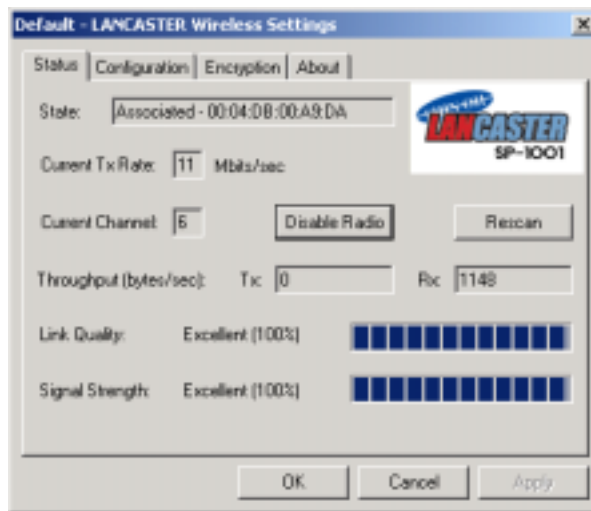


## 4. WIRELESS UTILITY SETUP

---

### 4-4. Link Quality Test

Link Quality Test is a useful diagnostic tool for you to test point-to-point data transmission quality between two wireless LAN stations. Or, if you use the Infrastructure wireless LAN configuration, you can test the transmission quality between your wireless LAN station and Access Point. When Link Quality Test Screen is displayed, you may choose one of the roles that this wireless LAN station should perform.



## 5. CERTIFICATE OF WARRANTY

---

### CERTIFICATE OF WARRANTY

Thank you for purchasing our products.

This product is released to the market after strict quality control and precise inspection. You may get the free service at our A/S center if the products you purchased are found to have any manufacturing defects or any natural defect.

#### Period of Warranty

Lancaster : A year

Model No : SP-1001

Purchased Date :

Serial No. :

Purchased Shop :

Price :

#### Free Service

You may get the free service only for the defects within one year after purchasing.

#### Service with Charged

For the asked service for none defects

Once you ask for service, if your product is proved as none defect, you will be charged for the provided service so, please carefully read user's guide.

For the defects caused by customer's error

- Defects caused by carelessness in using (getting wet and impact) or unauthorized repair and modification.
- Defects caused by plugging to the none appropriate power source.
- Defects caused by any repair at the unauthorized place other than the Shinoh Electronic Co., Ltd A/S center.
- Defects or damage caused by the drop in moving
- Defects caused by disasters such as fire, flood and earth quake

A/S Center: 729-5 Bonoh-dong, Ansan-city, Kyeonggi-province

Phone No. 031-406-3702

Fax No. 031-407-7548

Homepage : <http://www.shinoh.co.kr>

\* This guarantee shall not be reissued so, please carefully keep it with user's guide.

---