

Figure 1 - Internal Photos - Main PCB - Top, with Radio PCB

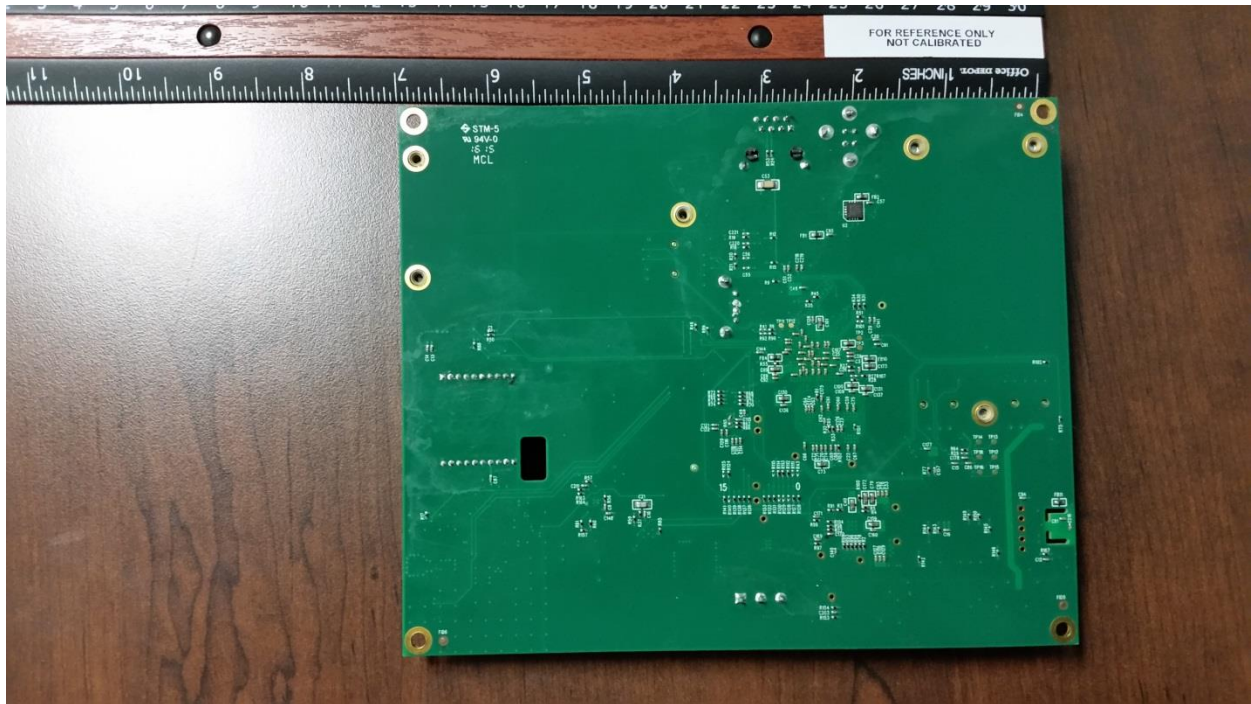


Figure 2 – Internal Photos, Main PCB - Bottom

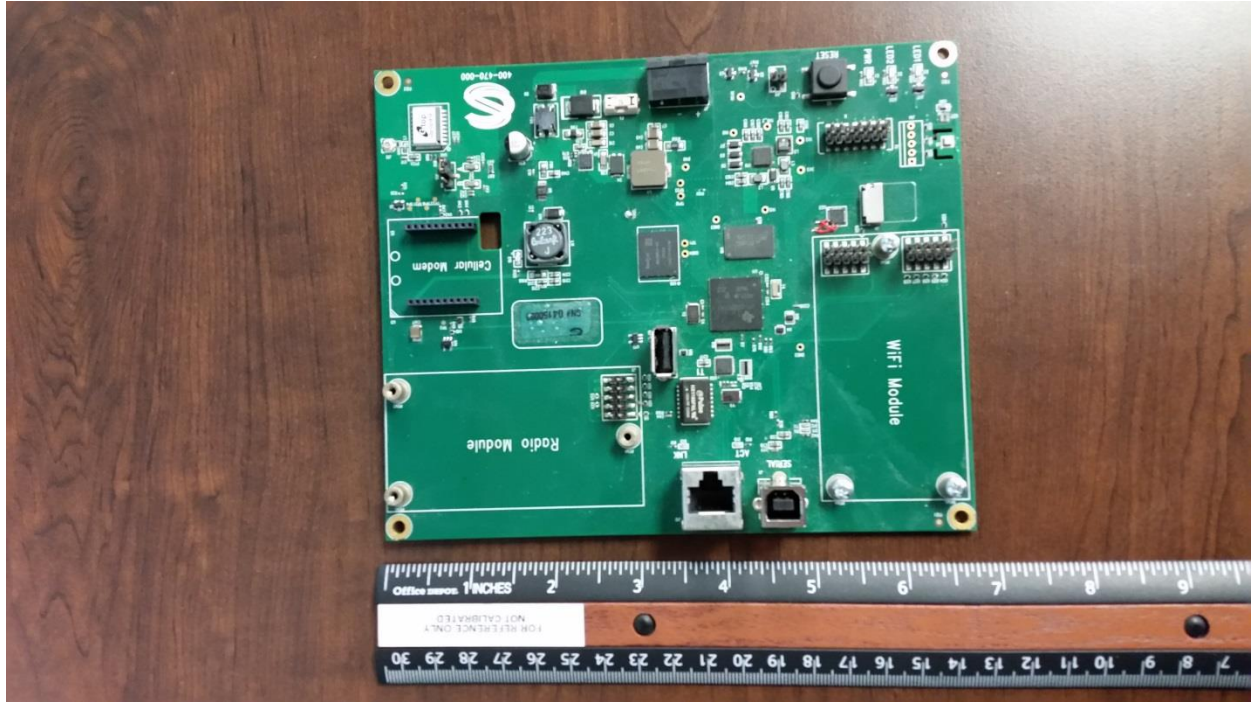


Figure 3 – Internal Photos, Main PCB with Radio PCB Removed

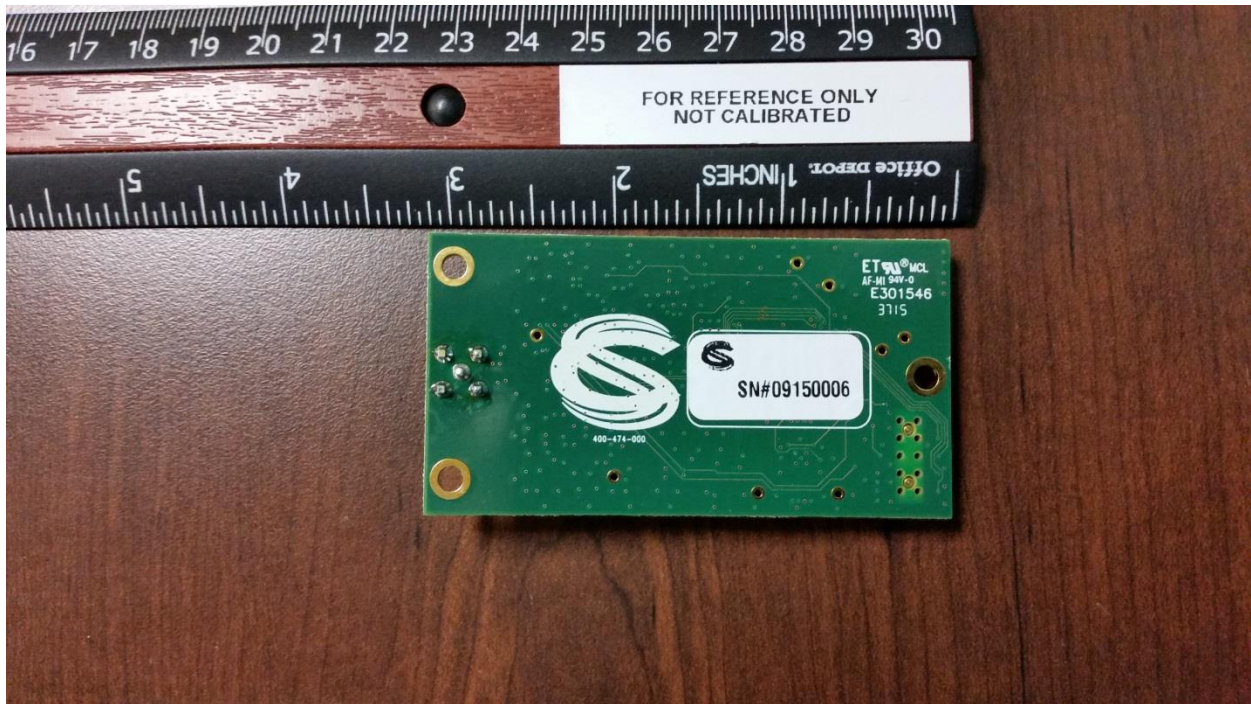


Figure 4 – Internal Photos, Radio PCB Bottom

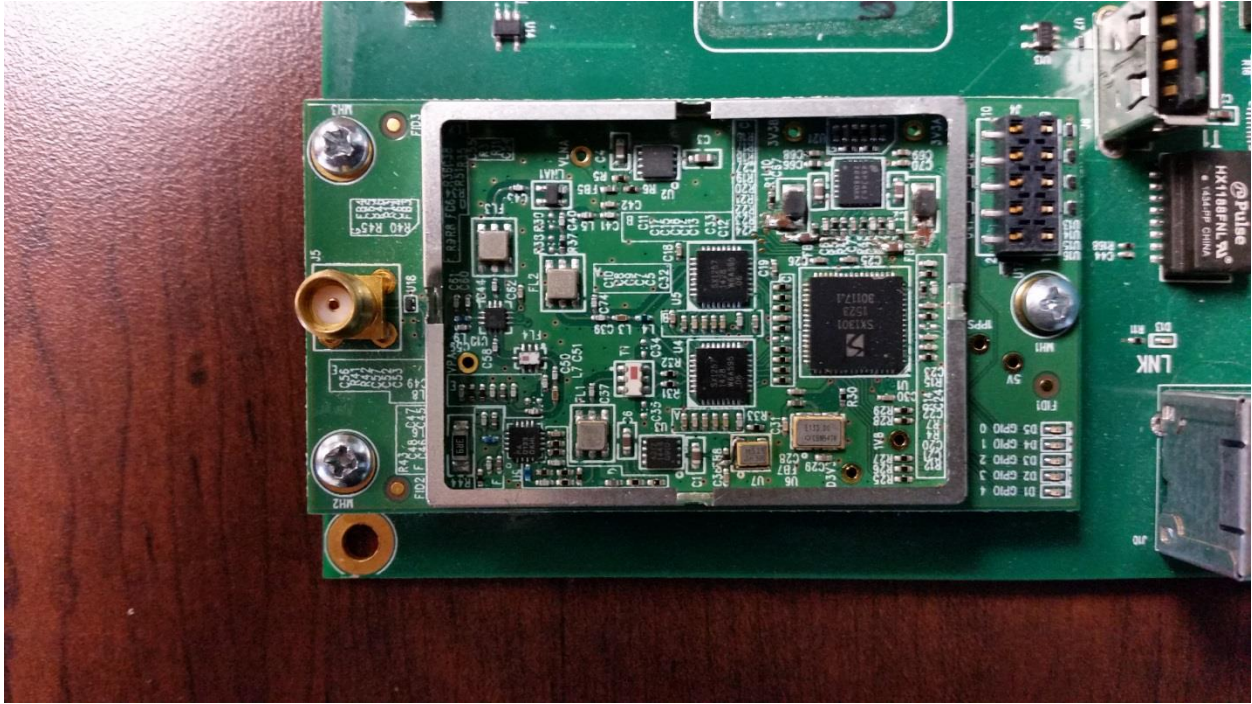


Figure 5 - Internal Photos - Radio Shield Removed

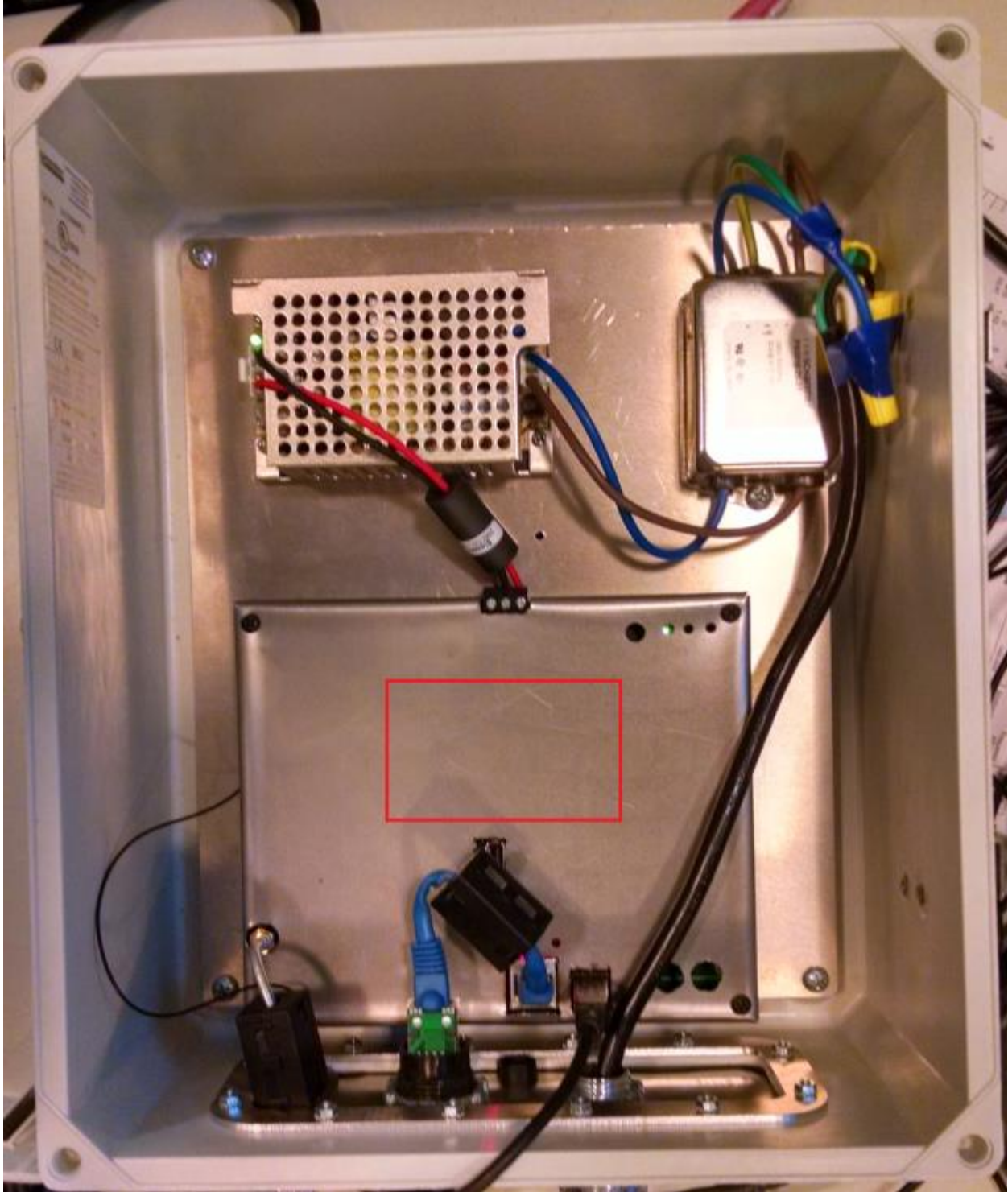


Figure 6 - Lid open and shielding cover in place

The red rectangle shows the placing of the FCC ID label. An additional FCC Label is placed on the outside of the enclosure.