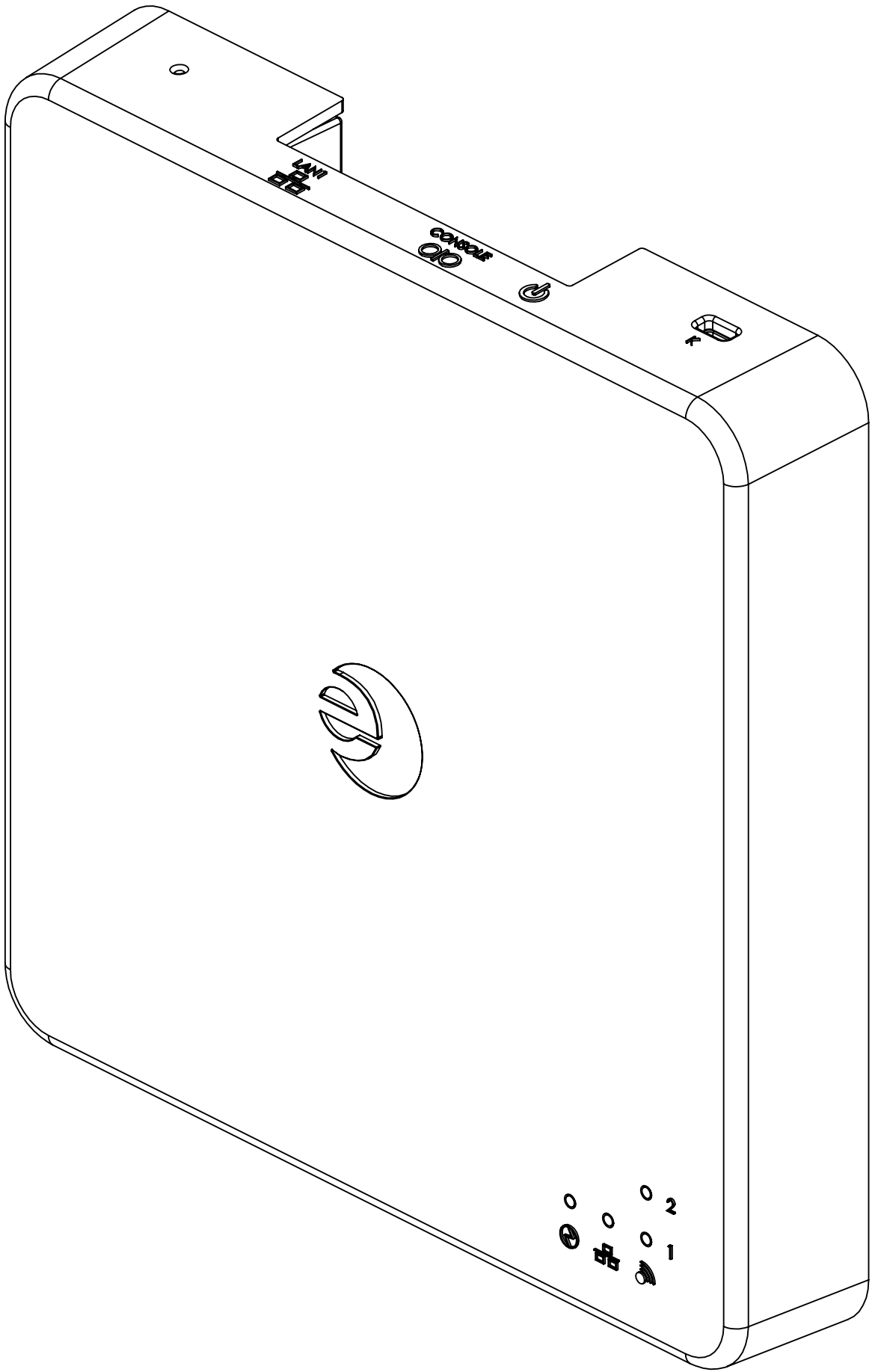


NOTES:

1. ITEM NUMBERS SHOWN CORRESPOND TO BOM ITEMS FOR ENT-9404495 IN AGILE.
2. TORQUE SETTING FOR PCB SCREWS = 4.0 in-lbs (4.6 kgf-cm)
3. TORQUE SETTING FOR BASE SCREWS = 5.0 in-lbs (5.8 kgf-cm)
4. CABLES MUST BE ORIENTED IN A MANNER WHICH ENSURES THAT THEY DO NOT COVER THE LED'S OR GET TRAPPED BY COVER RIBS IN ASSEMBLY.
5. ALL MATERIALS USED AND SUPPLIED IN ACCORDANCE WITH THIS SPECIFICATION SHALL COMPLY WITH DIRECTIVE 2002/95/ECof THE EUROPEAN PARLIAMENT AND OF THE COUNCIL, ON THE RESTRICTION OF THE USE OF CERTAIN HAZARDOUS SUBSTANCES IN ELECTRICAL AND ELECTRONIC EQUIPMENT (RoHS DIRECTIVE).

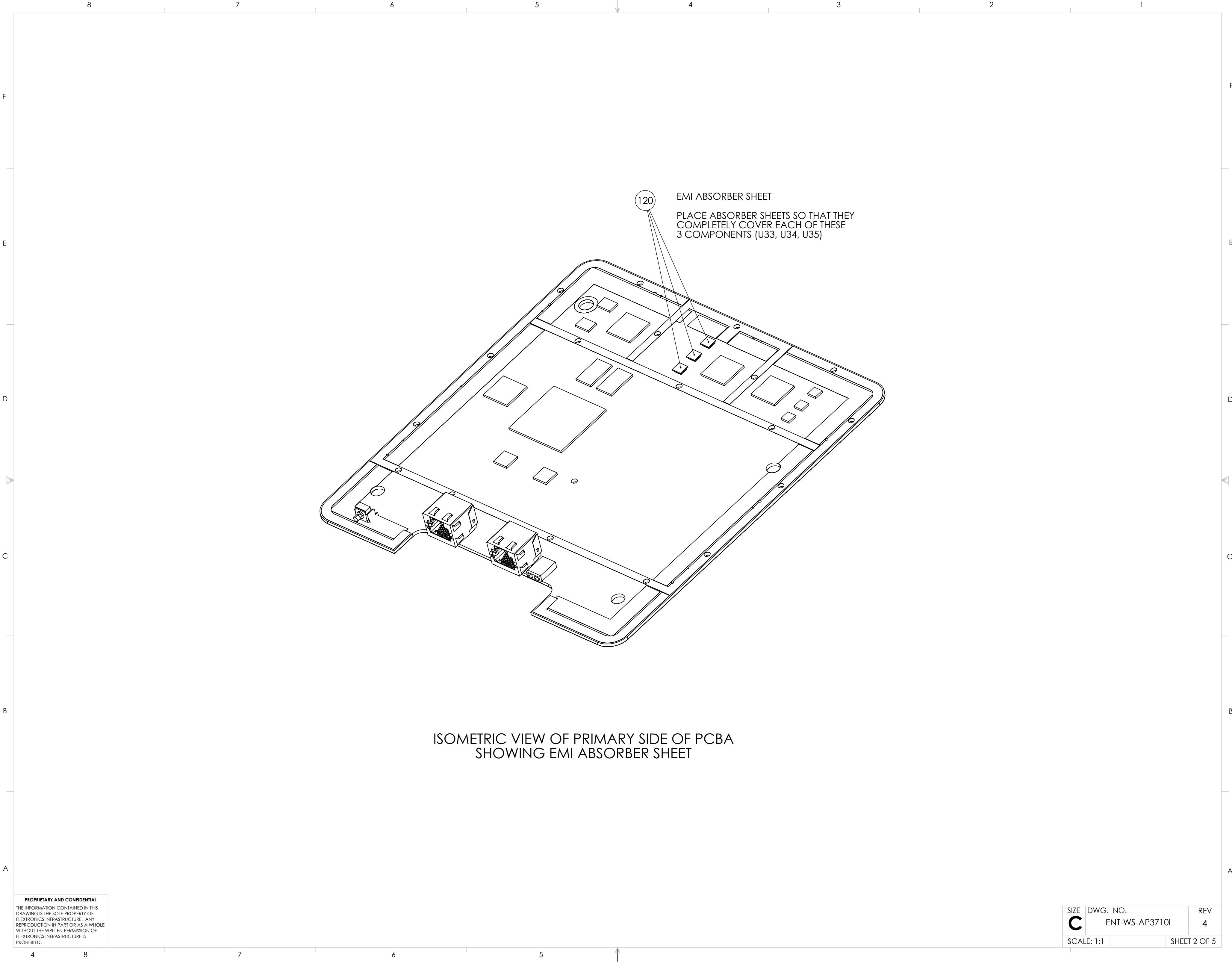
REVISIONS			
REV.	DESCRIPTION	DATE	APPROVED
1	INITIAL RELEASE	FEB 2, 2012	TL
2	REMOVE BLANK PLATE, UPDATE NOTES	30-MAY-2012	TL
3	ADDED ITEM 120, REMOVED ITEM 60, QTY. 1	8/27/2012	TL
4	ADD NEW EMI ABSORBER SHEET ITEM 140	09-NOV-2012	TL



PROPRIETARY AND CONFIDENTIAL
THE INFORMATION CONTAINED IN THIS
DRAWING IS THE SOLE PROPERTY OF
FLEXTRONICS INFRASTRUCTURE. ANY
REPRODUCTION IN PART OR AS A WHOLE
WITHOUT THE WRITTEN PERMISSION OF
FLEXTRONICS INFRASTRUCTURE IS
PROHIBITED.

		UNLESS OTHERWISE SPECIFIED:		NAME	DATE
		DIMENSIONS ARE IN INCHES	DRAWN	DC	8/27/2012
		TOLERANCES:	CHECKED		
		FRACTIONAL ±	ENG APPR.		
		ANGULAR: MACH ± BEND ±	MFG APPR.		
		TWO PLACE DECIMAL ± 0.01	Q.A.		
		THREE PLACE DECIMAL ± 0.005	COMMENTS:		
		INTERPRET GEOMETRIC TOLERANCING PER:			
		MATERIAL SEE NOTES			
NEXT ASSY	USED ON	FINISH			
		SEE NOTES			
	APPLICATION	DO NOT SCALE DRAWING			

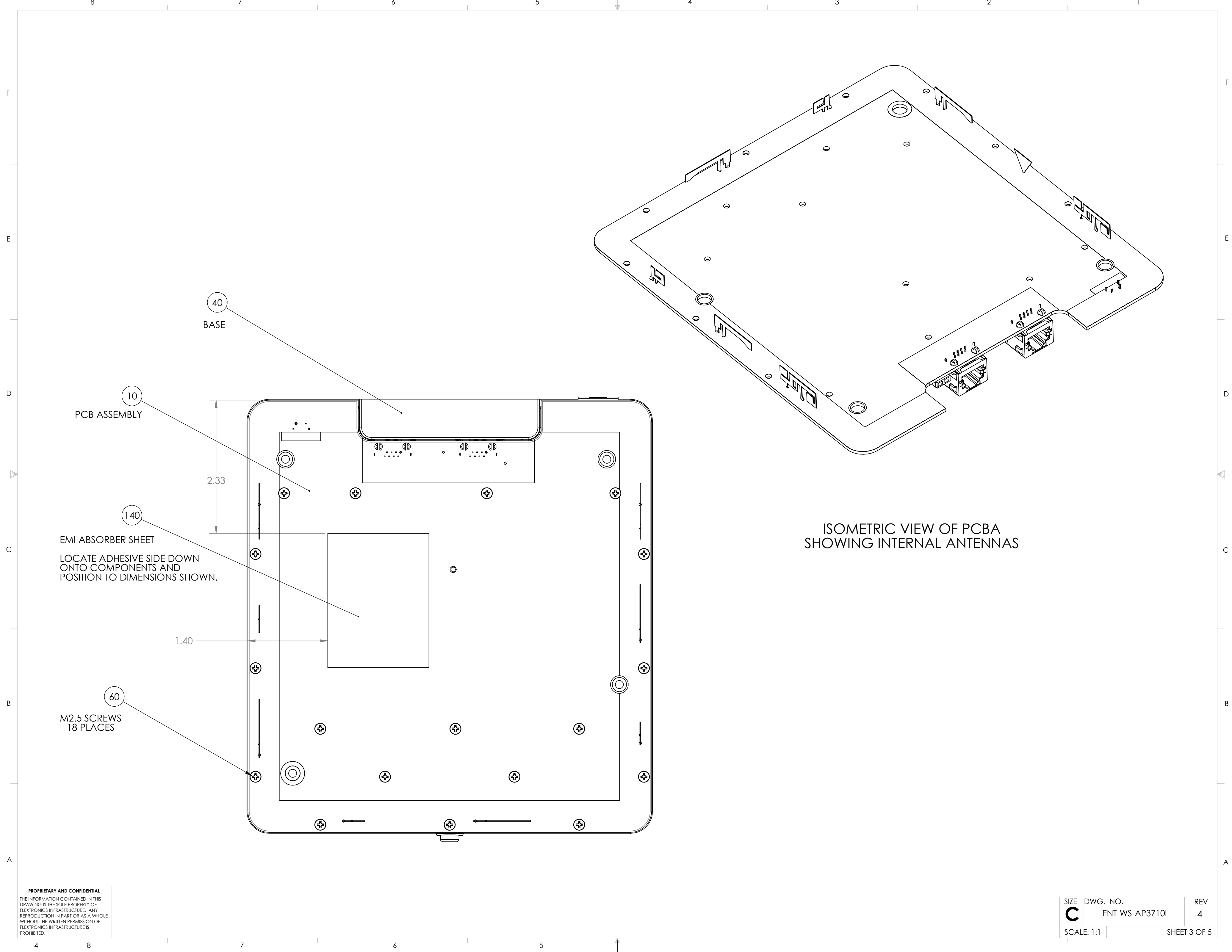
FLEX Infrastructure		
TITLE:		
ENTERASYS AP3710i ASSEMBLY		
SIZE C	DWG. NO. ENT-WS-AP3710i	REV 4
SCALE: 1:1	WEIGHT:	SHEET 1 OF 5



ISOMETRIC VIEW OF PRIMARY SIDE OF PCBA
SHOWING EMI ABSORBER SHEET

PROPRIETARY AND CONFIDENTIAL
THE INFORMATION CONTAINED IN THIS
DRAWING IS THE SOLE PROPERTY OF
FLEXTRONICS INFRASTRUCTURE. ANY
REPRODUCTION IN PART OR AS A WHOLE
WITHOUT THE WRITTEN PERMISSION OF
FLEXTRONICS INFRASTRUCTURE IS
PROHIBITED.

SIZE C	DWG. NO. ENT-WS-AP3710I	REV 4
SCALE: 1:1		SHEET 2 OF 5



CONNECTION TABLE		CABLE
PCB REF DES		
J29	J27	U-FL TO U-FL (BLACK)
J30	J28	U-FL TO U-FL (BLACK)

U-FL TO U-FL CABLE (THICK BLACK)

20

J29

J30

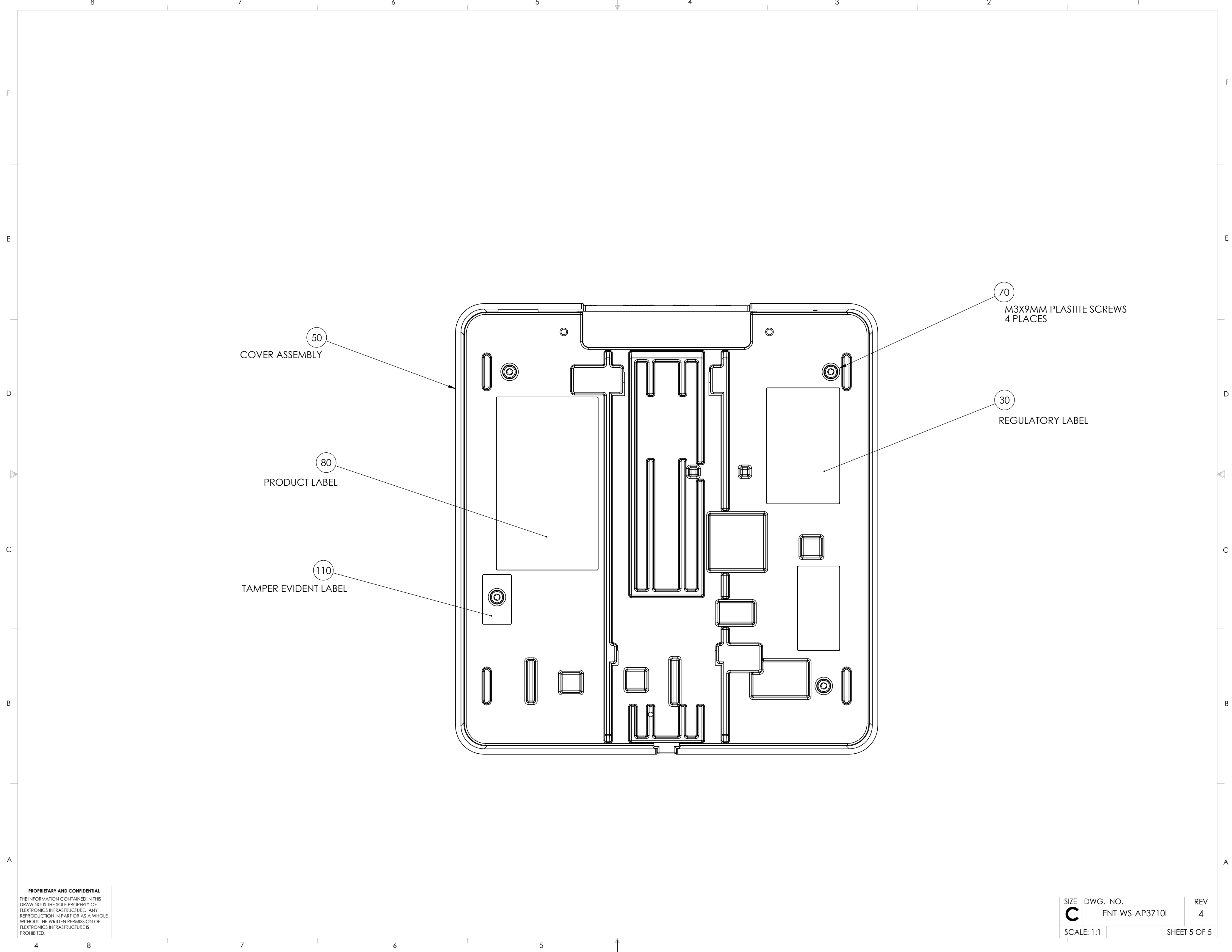
SEE NOTE 4

J28

J27

PROPRIETARY AND CONFIDENTIAL
THE INFORMATION CONTAINED IN THIS
DRAWING IS THE SOLE PROPERTY OF
FLEXTRONICS INFRASTRUCTURE. ANY
REPRODUCTION IN PART OR AS A WHOLE
WITHOUT THE WRITTEN PERMISSION OF
FLEXTRONICS INFRASTRUCTURE IS
PROHIBITED.

SIZE C	DWG. NO. ENT-WS-AP3710I	REV 4
SCALE: 1:1		SHEET 4 OF 5



PROPRIETARY AND CONFIDENTIAL
THE INFORMATION CONTAINED IN THIS
DRAWING IS THE SOLE PROPERTY OF
FLEXTRONICS INFRASTRUCTURE. ANY
REPRODUCTION IN PART OR AS A WHOLE
WITHOUT THE WRITTEN PERMISSION OF
FLEXTRONICS INFRASTRUCTURE IS
PROHIBITED.

SIZE C	DWG. NO. ENT-WS-AP3710I	REV 4
SCALE: 1:1		SHEET 5 OF 5