

NOTES:

1. ITEM NUMBERS SHOWN CORRESPOND TO BOM ITEMS FOR ENT-9404496 IN AGILE.
2. TORQUE SETTING FOR PCB SCREWS = 4.0 in-lbs (4.6 kgf-cm)
3. TORQUE SETTING FOR BASE SCREWS = 5.0 in-lbs (5.8 kgf-cm)
4. CABLES MUST BE ORIENTED IN A MANNER WHICH ENSURES THAT THEY DO NOT COVER THE LED'S OR GET TRAPPED BY COVER RIBS IN ASSEMBLY.
5. THESE CONNECTORS MUST BE ASSEMBLED TO THE COVER (ITEM 50) IN THE CORRECT POSITIONS INDICATED. LOCKWASHERS AND NUTS ARE ON THE OUTSIDE AND THEN TIGHTENED SECURELY. USE TORQUE = 6.0 in-lbs (6.9 kgf-cm)
6. ALL MATERIALS USED AND SUPPLIED IN ACCORDANCE WITH THIS SPECIFICATION SHALL COMPLY WITH DIRECTIVE 2002/95/ECof THE EUROPEAN PARLIAMENT AND OF THE COUNCIL, ON THE RESTRICTION OF THE USE OF CERTAIN HAZARDOUS SUBSTANCES IN ELECTRICAL AND ELECTRONIC EQUIPMENT (RoHS DIRECTIVE).

REVISIONS			
REV.	DESCRIPTION	DATE	APPROVED
1	INITIAL RELEASE	FEB 1, 2012	TL
2	REMOVE BLANK PLATE, UPDATE NOTES	30-MAY-2012	TL
3	ADDED ITEM 160, REMOVED ITEM 40, QTY. 1	8/27/2012	TL
4	ADD EMI ABSORBER SHEET ITEM 150	09-NOV-2012	TL
5	ADD GROUND CLIPS FOR ESD PROTECTION	27-NOV-2012	TL



PROPRIETARY AND CONFIDENTIAL
THE INFORMATION CONTAINED IN THIS
DRAWING IS THE SOLE PROPERTY OF
FLEXTRONICS INFRASTRUCTURE. ANY
REPRODUCTION IN PART OR AS A WHOLE
WITHOUT THE WRITTEN PERMISSION OF
FLEXTRONICS INFRASTRUCTURE IS
PROHIBITED.

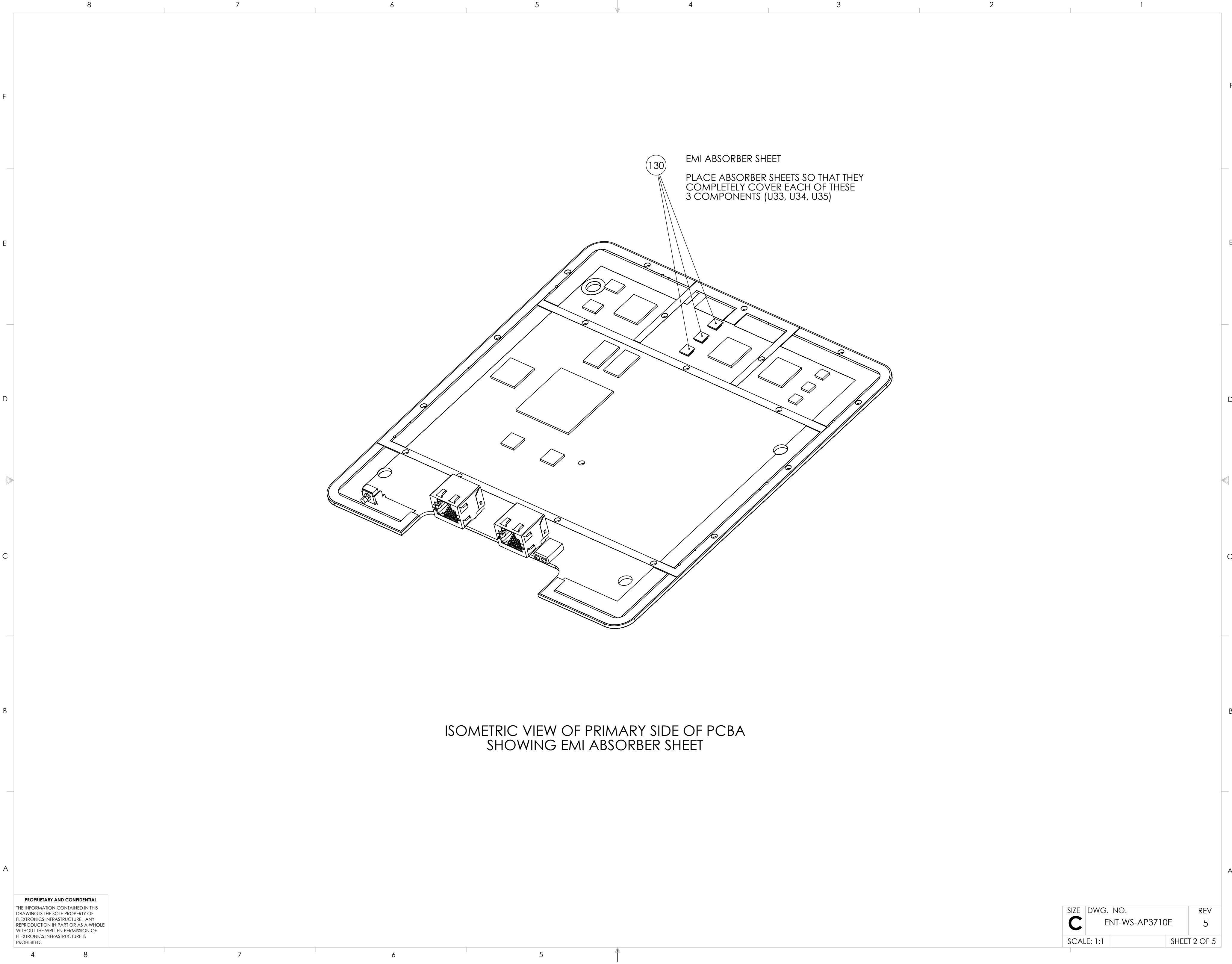
		UNLESS OTHERWISE SPECIFIED:		NAME	DATE
		DIMENSIONS ARE IN INCHES	DRAWN	DC	8/27/2012
		TOLERANCES:	CHECKED		
		FRACTIONAL: ±	ENG APPR.		
		ANGULAR: MACH ± BEND ±	MFG APPR.		
		TWO PLACE DECIMAL ± 0.01	Q.A.		
		THREE PLACE DECIMAL ± 0.005	COMMENTS:		
		INTERPRET GEOMETRIC TOLERANCING PER:			
		MATERIAL SEE NOTES			
		FINISH			
NEXT ASSY	USED ON	SEE NOTES			
		DO NOT SCALE DRAWING			

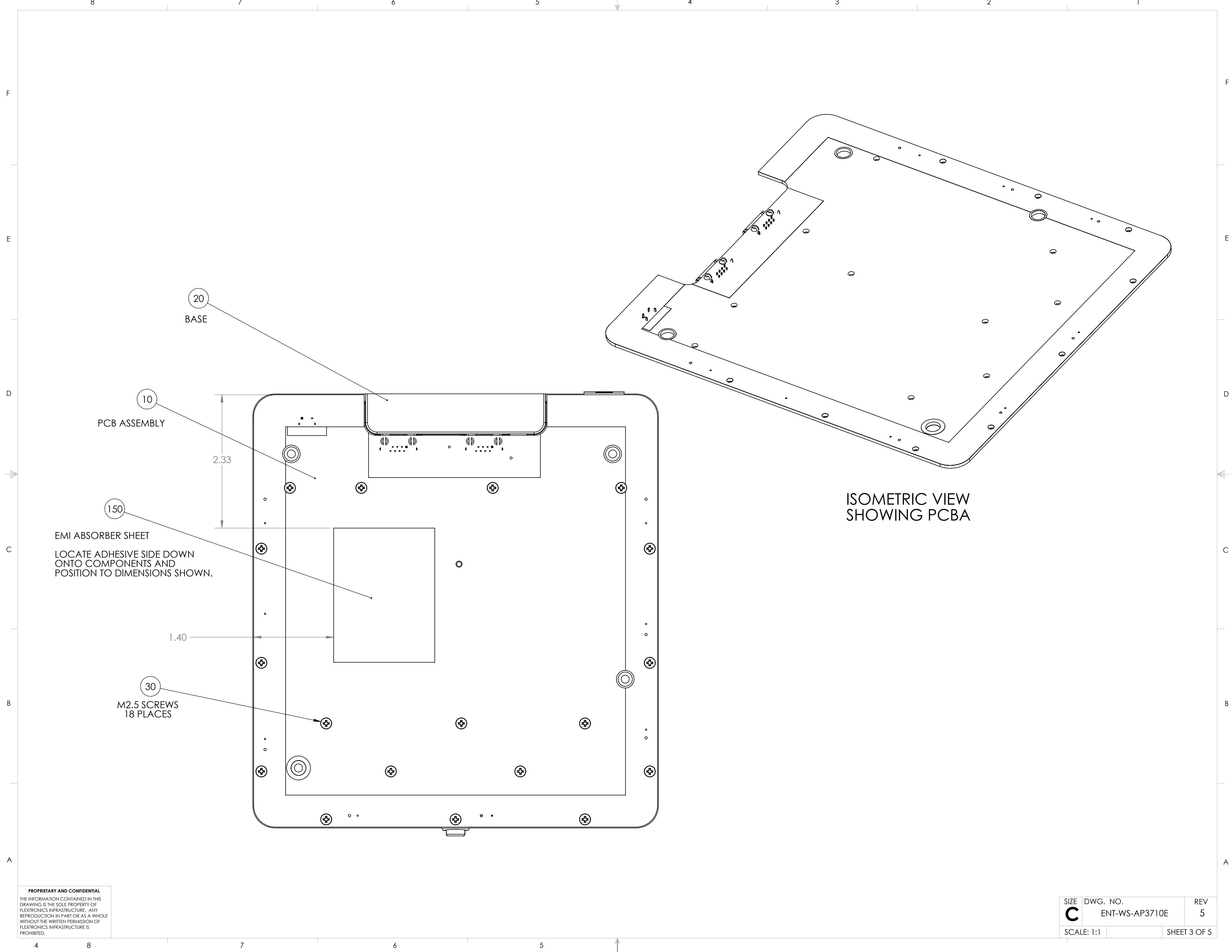
FLEX Infrastructure

TITLE:

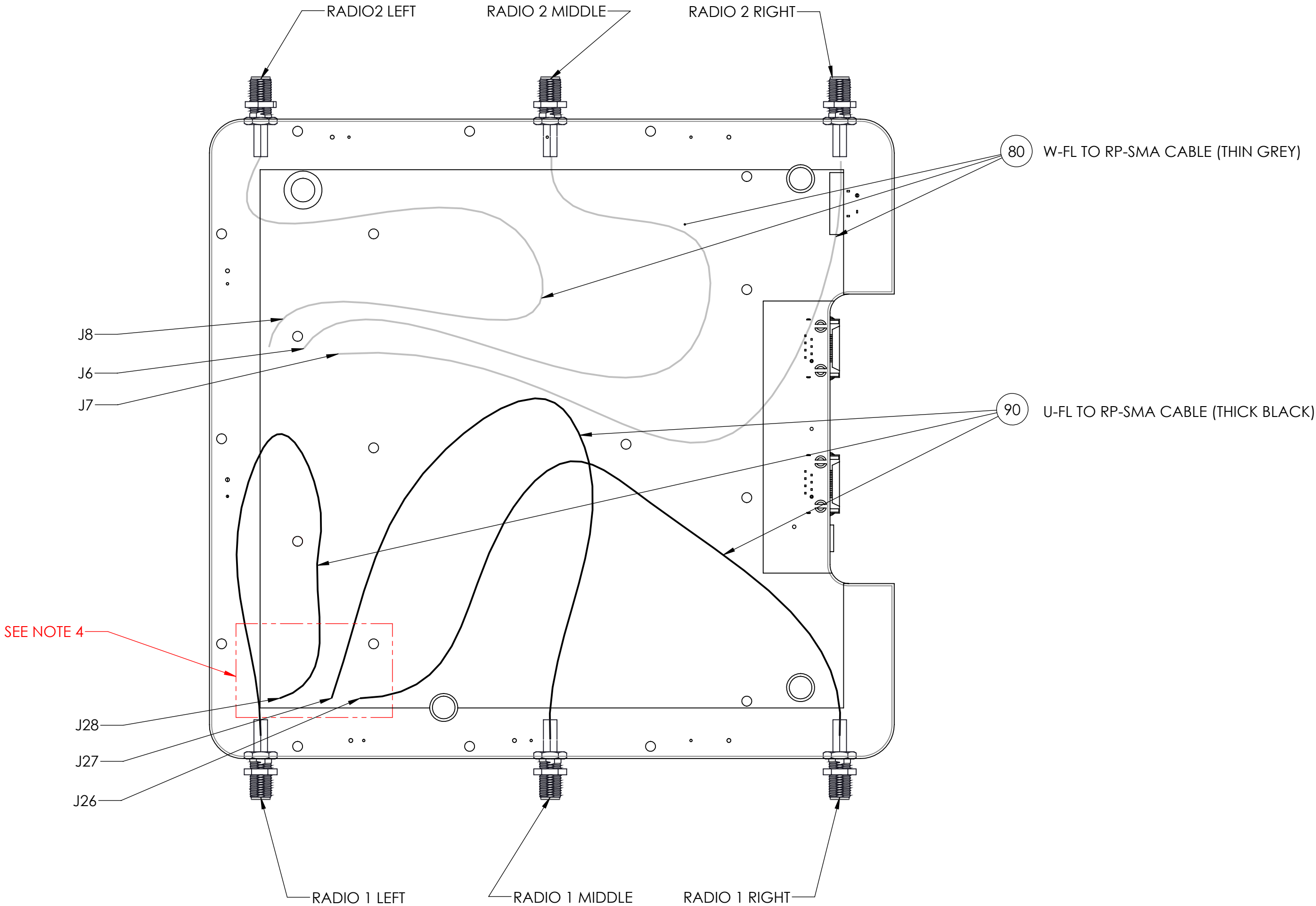
ENTERASYS AP3710e
ASSEMBLY

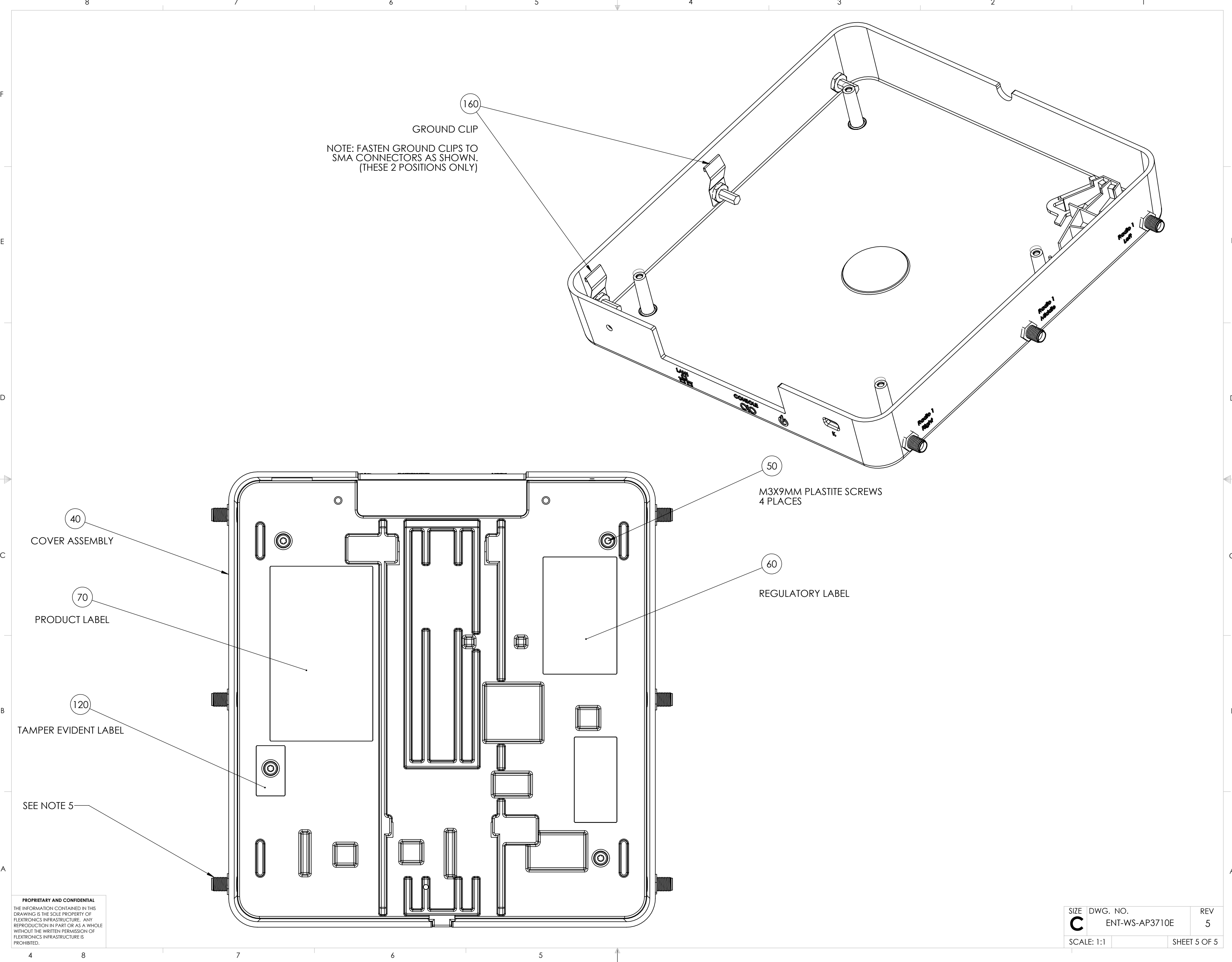
SIZE	DWG. NO.	REV
C	ENT-WS-AP3710E	5
SCALE: 1:1	WEIGHT:	SHEET 1 OF 5





CONNECTION TABLE		CABLE
COVER I.D.	PCB REF DES	
RADIO 2 LEFT	J8	W-FL TO RP-SMA (THIN GREY))
RADIO 2 MIDDLE	J6	W-FL TO RP-SMA (THIN GREY)
RADIO 2 RIGHT	J7	W-FL TO RP-SMA (THIN GREY))
RADIO 1 LEFT	J28	U-FL TO RP-SMA (THICK BLACK)
RADIO 1 MIDDLE	J27	U-FL TO RP-SMA (THICK BLACK)
RADIO 1 RIGHT	J26	U-FL TO RP-SMA (THICK BLACK)





PROPRIETARY AND CONFIDENTIAL
THE INFORMATION CONTAINED IN THIS
DRAWING IS THE SOLE PROPERTY OF
FLEXTRONICS INFRASTRUCTURE. ANY
REPRODUCTION IN PART OR AS A WHOLE
WITHOUT THE WRITTEN PERMISSION OF
FLEXTRONICS INFRASTRUCTURE IS
PROHIBITED.

SIZE	DWG. NO.	REV
C	ENT-WS-AP3710E	5
SCALE: 1:1		SHEET 5 OF 5