

60° 2.4-2.7 Base Station Antenna

[Contact](#)

MA-WC24-6X

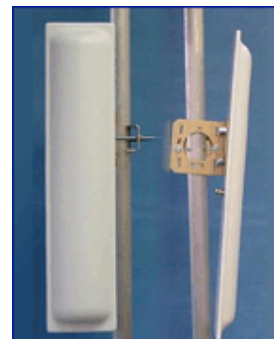
Mars 60° 2.4-2.7 GHz Base Station Antenna

has a lightweight and durable construction.
Additional Features:

- Quick and easy installation.
- Easily adapted to any RF connector.
- Adjustable Tilt

Applications:

- Point to Multi Point
- Base Station Antenna for WLL applications.
- MMDS
- ISM applications



Specifications:

Electrical	
Frequency range	2.4 - 2.7 GHz
GAIN, min.	17 dBi
VSWR, max.	1.5 : 1
3 dB Beam Width - Elevation, typ.	6.7°
3 dB Beam Width - Azimuth, typ.	60°
Polarization	Linear Vertical
Power Rating	10 Watts
Input Impedance	50 Ohms
Mechanical and Environmental	
Dimensions (LxWxD)	1200x140x30 mm
RF Connector	N- Type/SMA/MCX (others available)
Radome	ABS - UV Protected
Back Plate	Aluminum, Anodized
Temperature (Operating)	-40°C to +65°C
Humidity	100%
Lightning Protection	DC Grounded
Standard Compliance	
• ETSI EN 301 525 v1.1.1	

