

60° 2.4-2.7 Base Station Antenna

[Contact](#)

MA-WC24-5X

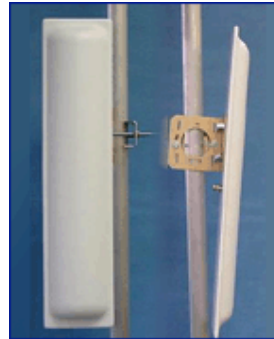
Mars 60° 2.4-2.7 Base Station Antenna has a lightweight and durable construction.

Additional Features:

- Quick and easy installation
- Easily adapted to any RF connector
- Adjustable Tilt

Applications:

- Point to Multi Point
- Base Station Antenna for WLL applications.
- MMDS
- ISM applications



Specifications:

Electrical	
Frequency range	2.4 - 2.7 GHz
Gain	14 dBi
VSWR	1:1.5
3dB Beamwidth - Azimuth	60°
3dB Beamwidth - Elevation	12°
Input Impedance	50 Ohm
Power Rating	50 Watts
Polarization	Linear Vertical
Mechanical and Environmental	
Dimensions (LxWxD)	600x140x30 mm
Radome	ABS - UV Protected
Connector	N-type/SMA/MCX (others available)
Back Plate	Anodized Aluminum
Operating Temperature	-40°C to +65°C
Humidity	100%
Lightning Protection	DC Grounded

Standard Compliance

ETSI EN 301 325 v1.1.1