

EXTERNAL DUT PHOTOGRAPHS



Front of Phone with 802.11b SDIO



Back of Phone with 802.11b SDIO



Left Side of Phone with 802.11b SDIO



Right Side of Phone with 802.11b SDIO

Applicant:	Palm, Inc.	FCC ID:	O8FJIMI	IC ID:	3905A-JIMI	Model:	Treo XXX	
DUT Type:	Portable Dual-Band PCS/Cellular CDMA 2000 Phone with Bluetooth and 802.11b WLAN SDIO Card							
2005 Celltech Labs Inc.	This document is not to be reproduced in whole or in part without the prior written permission of Celltech Labs Inc.							121 of 132

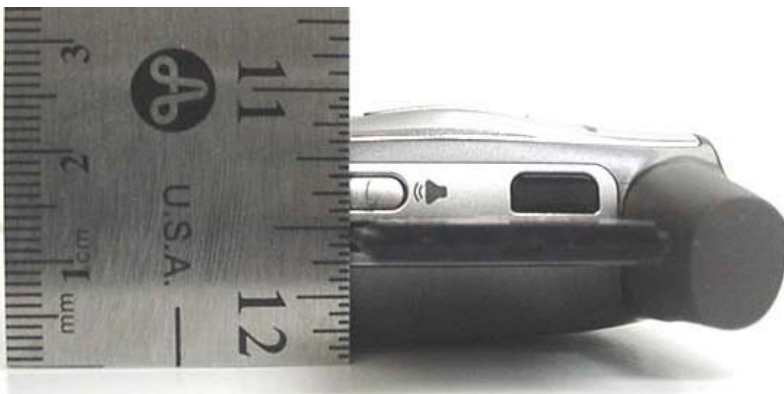
EXTERNAL DUT PHOTOGRAPHS



Top End of Phone with 802.11b SDIO



Bottom End of Phone with 802.11b SDIO



1.0 cm SDIO Card to Phone-Base Separation Distance



Phone with SDIO Card Removed

	Test Report Serial No.:	08220508F-T664-S24CW	Report Rev. No.:	Revision 0
	Report Issue Date:	Oct. 01, 2005	Test Date(s):	May 26, August 22-26 & 30, 2005
	Description of Test:	RF Exposure	SAR	FCC §2.1093 IC RSS-102


EXTERNAL DUT PHOTOGRAPHS



802.11b SDIO Card (Front Side)



802.11b SDIO Card (Back Side)

Applicant:	Palm, Inc.	FCC ID:	O8FJIMI	IC ID:	3905A-JIMI	Model:	Treo XXX	
DUT Type:	Portable Dual-Band PCS/Cellular CDMA 2000 Phone with Bluetooth and 802.11b WLAN SDIO Card							
2005 Celltech Labs Inc.	This document is not to be reproduced in whole or in part without the prior written permission of Celltech Labs Inc.							123 of 132

EXTERNAL DUT PHOTOGRAPHS
Fitted Leather Pouch and Swivel Belt-Clip Accessory (SKU#3179WW) with Generic Ear-Microphone (Back of Phone and 802.11b SDIO Facing Body)



	Test Report Serial No.:	08220508F-T664-S24CW	Report Rev. No.:	Revision 0
	Report Issue Date:	Oct. 01, 2005	Test Date(s):	May 26, August 22-26 & 30, 2005
	Description of Test:	RF Exposure	SAR	FCC §2.1093 IC RSS-102


EXTERNAL DUT PHOTOGRAPHS
Fitted Leather Pouch and Swivel Belt-Clip Accessory (SKU#3179WW)
(Back of Phone and 802.11b SDIO Facing Body)



without Belt-Clip



with Belt-Clip

Applicant:	Palm, Inc.	FCC ID:	O8FJIMI	IC ID:	3905A-JIMI	Model:	Treo XXX	
DUT Type:	Portable Dual-Band PCS/Cellular CDMA 2000 Phone with Bluetooth and 802.11b WLAN SDIO Card							
2005 Celltech Labs Inc.	This document is not to be reproduced in whole or in part without the prior written permission of Celltech Labs Inc.							125 of 132

EXTERNAL DUT PHOTOGRAPHS

Fitted Leather Pouch and Swivel Belt-Clip Accessory (SKU#3179WW)
(Back of Phone and 802.11b SDIO Facing Body)



Top End of Phone



Bottom End of Phone

	Test Report Serial No.:	08220508F-T664-S24CW	Report Rev. No.:	Revision 0
	Report Issue Date:	Oct. 01, 2005	Test Date(s):	May 26, August 22-26 & 30, 2005
	Description of Test:	RF Exposure	SAR	FCC §2.1093 IC RSS-102

EXTERNAL DUT PHOTOGRAPHS
Fitted Leather Pouch and Swivel Belt-Clip Accessory (SKU#3179WW)
(Back of Phone and 802.11b SDIO Facing Body)




Left Side



Right Side



Plastic Belt-Clip with Metal Spring

Applicant:	Palm, Inc.	FCC ID:	O8FJIMI	IC ID:	3905A-JIMI	Model:	Treo XXX	
DUT Type:	Portable Dual-Band PCS/Cellular CDMA 2000 Phone with Bluetooth and 802.11b WLAN SDIO Card							
2005 Celltech Labs Inc.	This document is not to be reproduced in whole or in part without the prior written permission of Celltech Labs Inc.							127 of 132

	Test Report Serial No.:	08220508F-T664-S24CW	Report Rev. No.:	Revision 0
	Report Issue Date:	Oct. 01, 2005	Test Date(s):	May 26, August 22-26 & 30, 2005
	Description of Test:	RF Exposure	SAR	FCC §2.1093 IC RSS-102


EXTERNAL DUT PHOTOGRAPHS



DUT Battery Compartment



DUT with Lithium-ion Battery

Applicant:	Palm, Inc.	FCC ID:	O8FJIMI	IC ID:	3905A-JIMI	Model:	Treo XXX	
DUT Type:	Portable Dual-Band PCS/Cellular CDMA 2000 Phone with Bluetooth and 802.11b WLAN SDIO Card							
2005 Celltech Labs Inc.	This document is not to be reproduced in whole or in part without the prior written permission of Celltech Labs Inc.							128 of 132

	Test Report Serial No.:	08220508F-T664-S24CW	Report Rev. No.:	Revision 0
	Report Issue Date:	Oct. 01, 2005	Test Date(s):	May 26, August 22-26 & 30, 2005
	Description of Test:	RF Exposure	SAR	FCC §2.1093 IC RSS-102


EXTERNAL DUT PHOTOGRAPHS



Lithium-ion Battery (P/N: 157-10014-00)



Lithium-ion Battery (P/N: 157-10014-00)

Applicant:	Palm, Inc.	FCC ID:	O8FJIMI	IC ID:	3905A-JIMI	Model:	Treo XXX	
DUT Type:	Portable Dual-Band PCS/Cellular CDMA 2000 Phone with Bluetooth and 802.11b WLAN SDIO Card							
2005 Celltech Labs Inc.		This document is not to be reproduced in whole or in part without the prior written permission of Celltech Labs Inc.						129 of 132