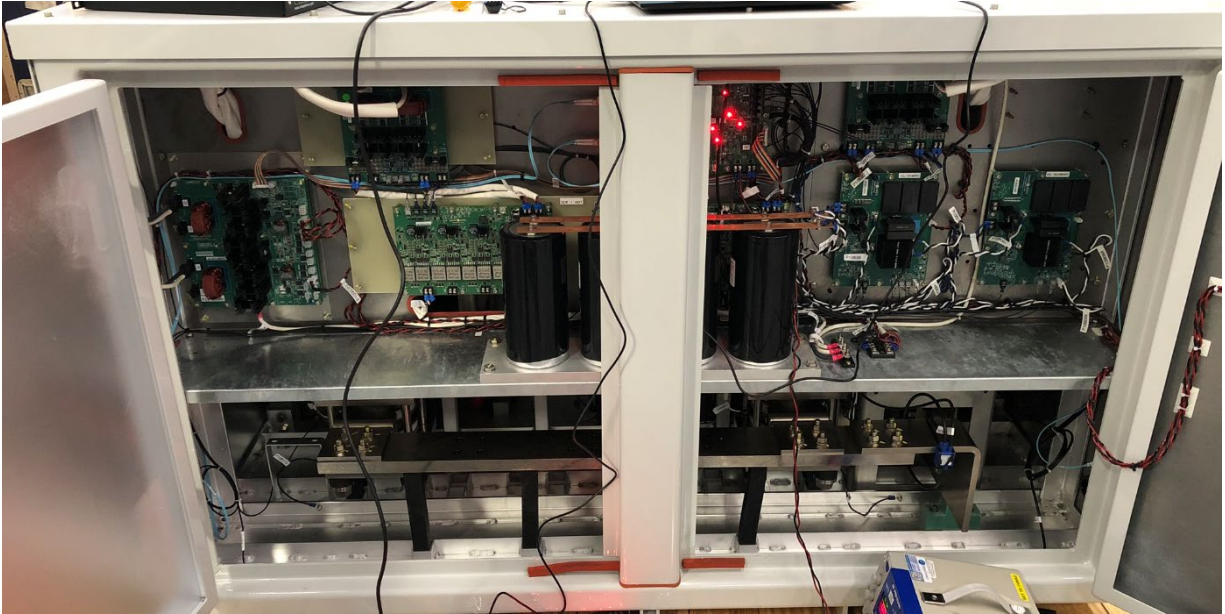
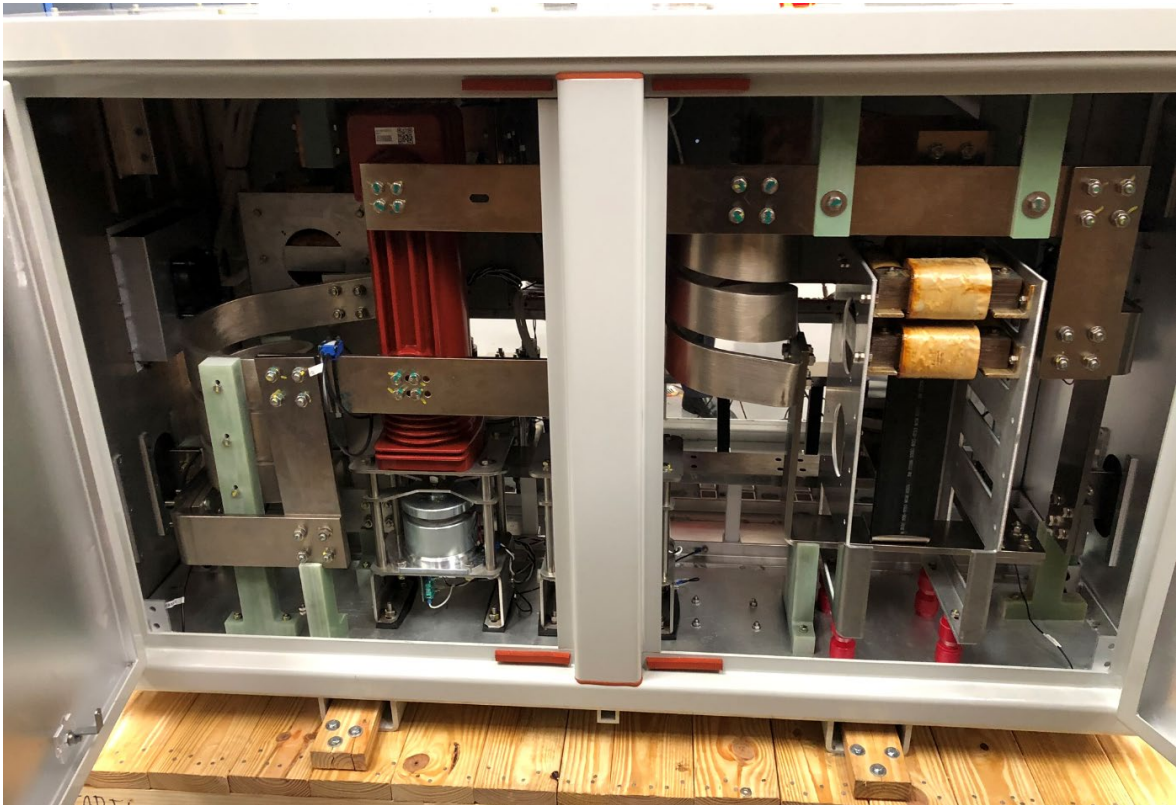


Smart-Bypass Model 2000-XX

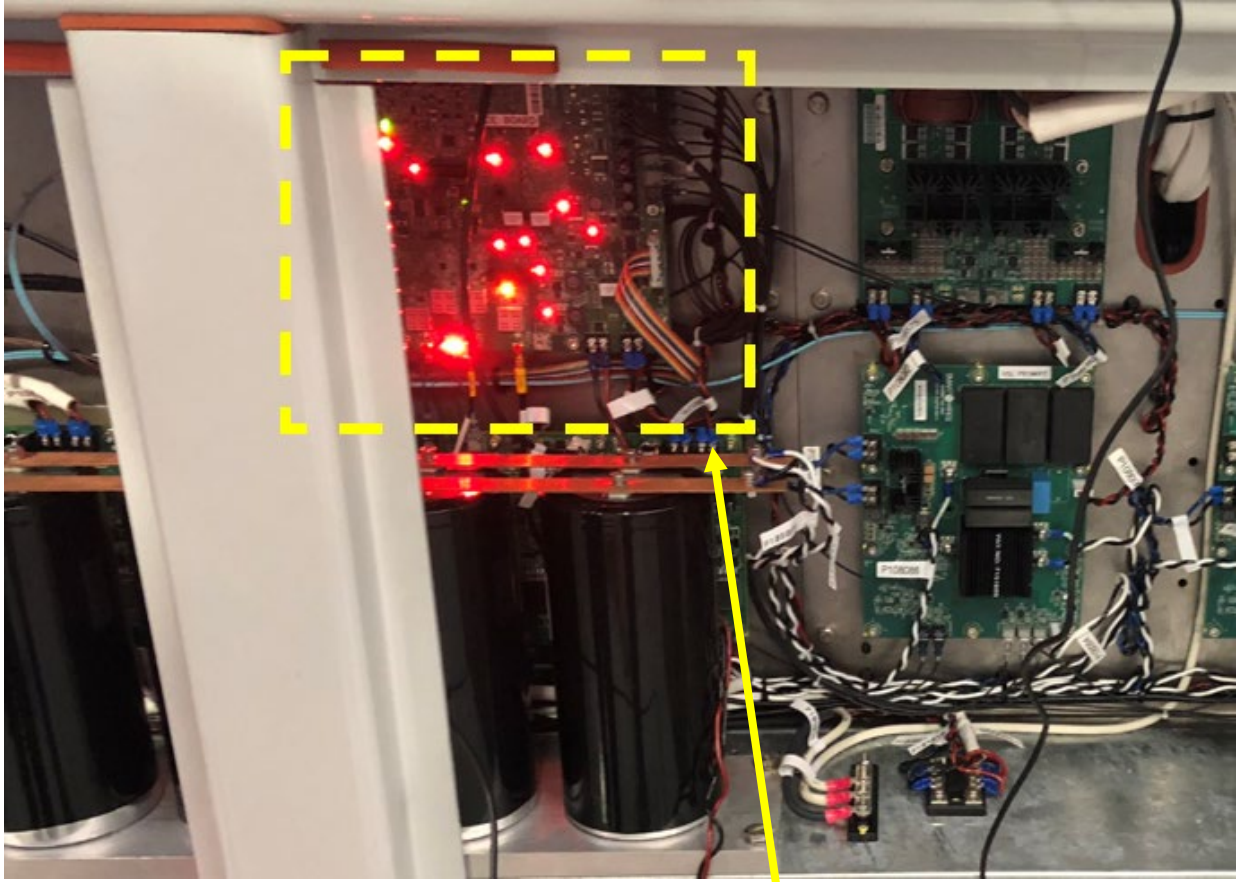
Internal Photos



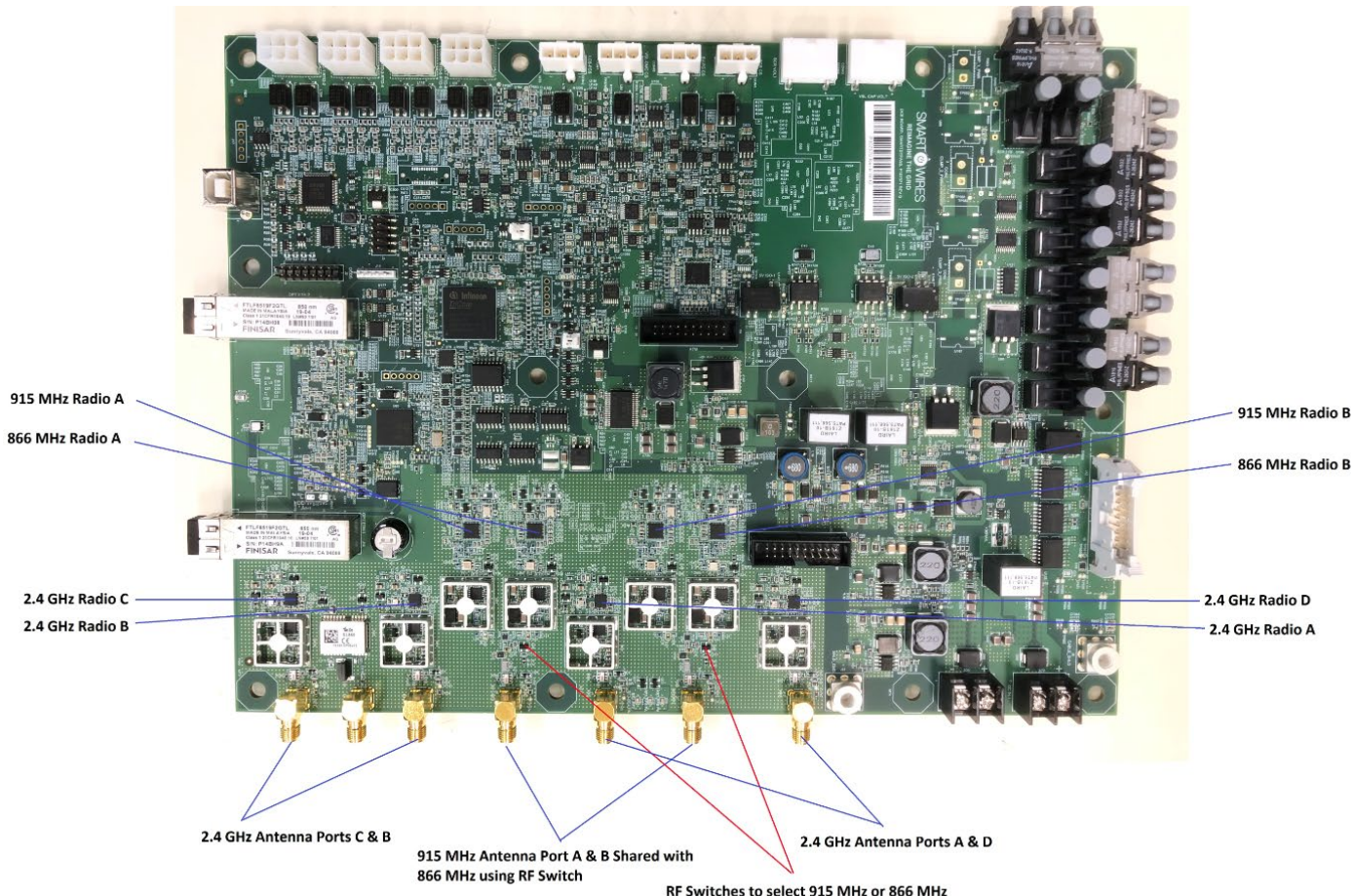
Front View Internal-Controls



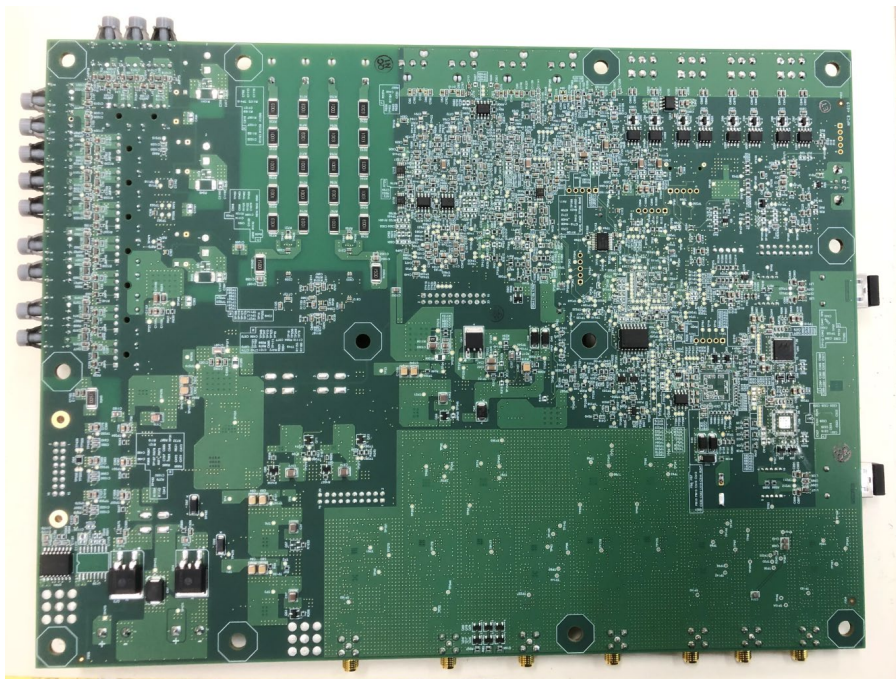
Rear view Internal-Electro-Mechanical Components



RF and control PCBA_P107570_installed on Smart-Bypass (description in next page)

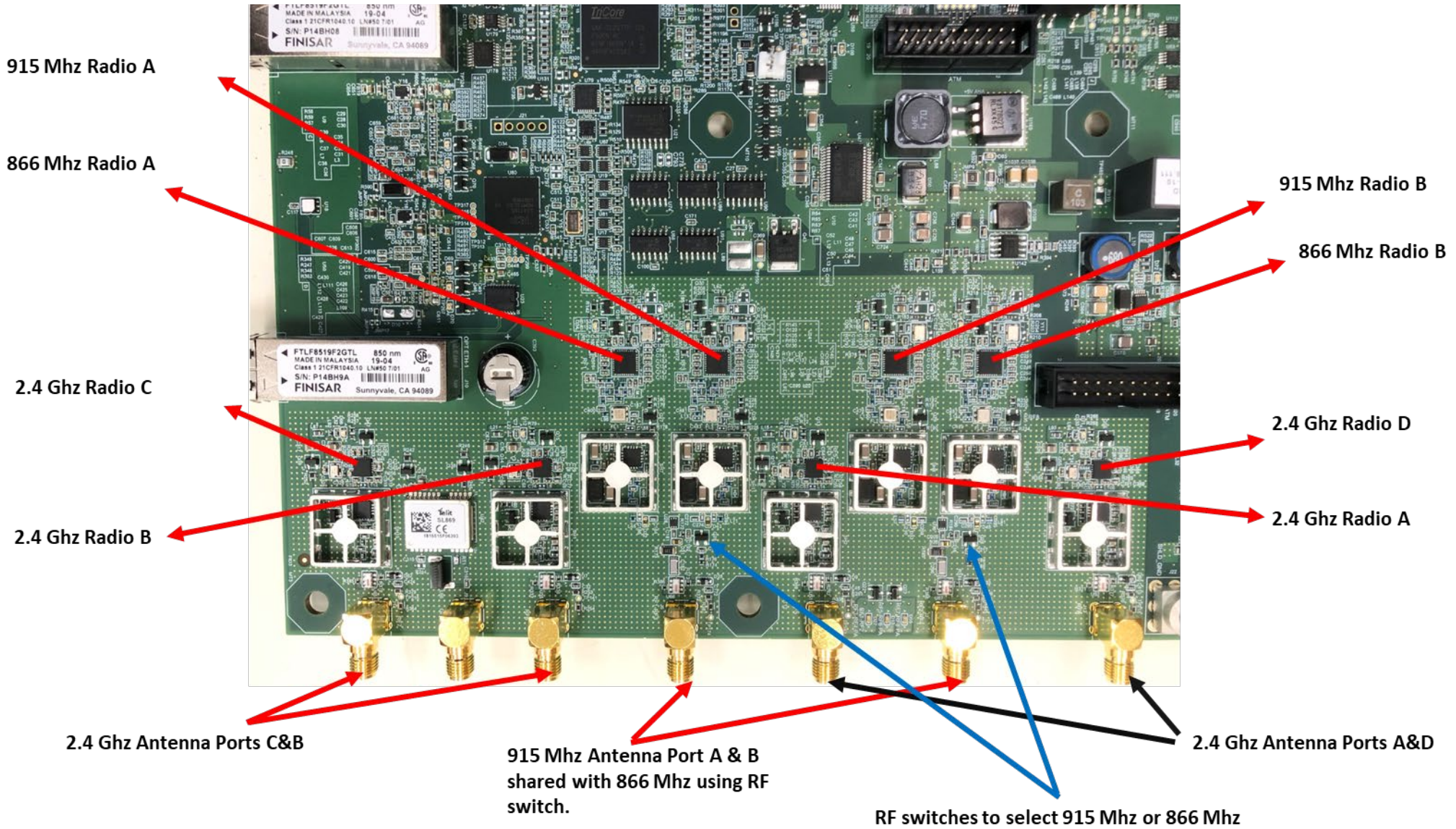


P107570 DCE RF Layout PCBA (EMC shields removed top)



P107570 DCE RF PCBA (bottom view)

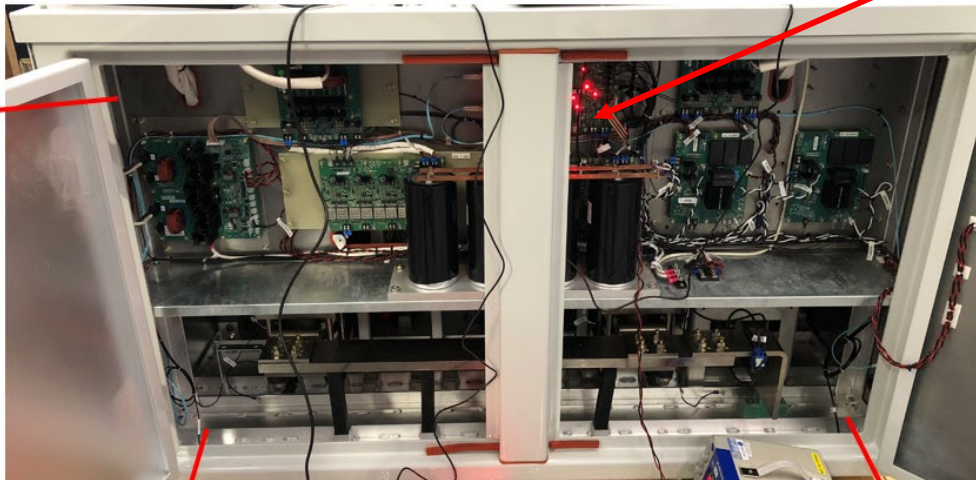
P107570 DCE RF PCBA Radios (closeup) EMC shields removed.



Antenna and RF Location

P107570 DCE
RF PCBA

GPS
Antenna
Taoglas
A.01.C.301111



ISM (915 Mhz)
Antenna Taoglas
IS.05.B.301111

ISM (2.4 Ghz)
Antenna Taoglas
WS.02.B.205111



ISM (2.4 Ghz)
Antenna Taoglas
WS.02.B.205111

ISM (915 Mhz)
Antenna Taoglas
IS.05.B.301111

*. Note: 866 MHz radios are not supported in this version.