

## PLC Internal Photos

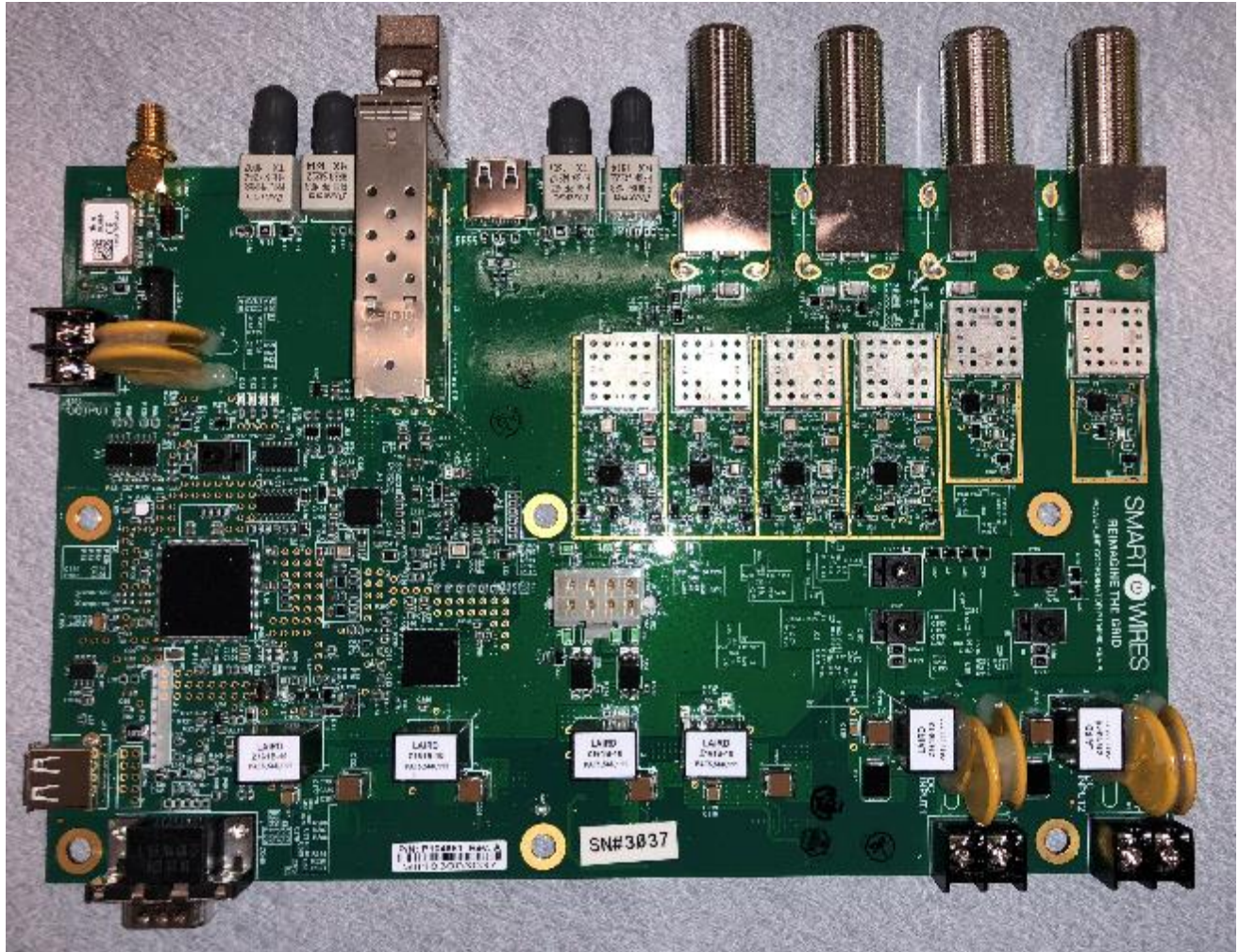


PLC enclosure top view with cover removed, high-level assembly.

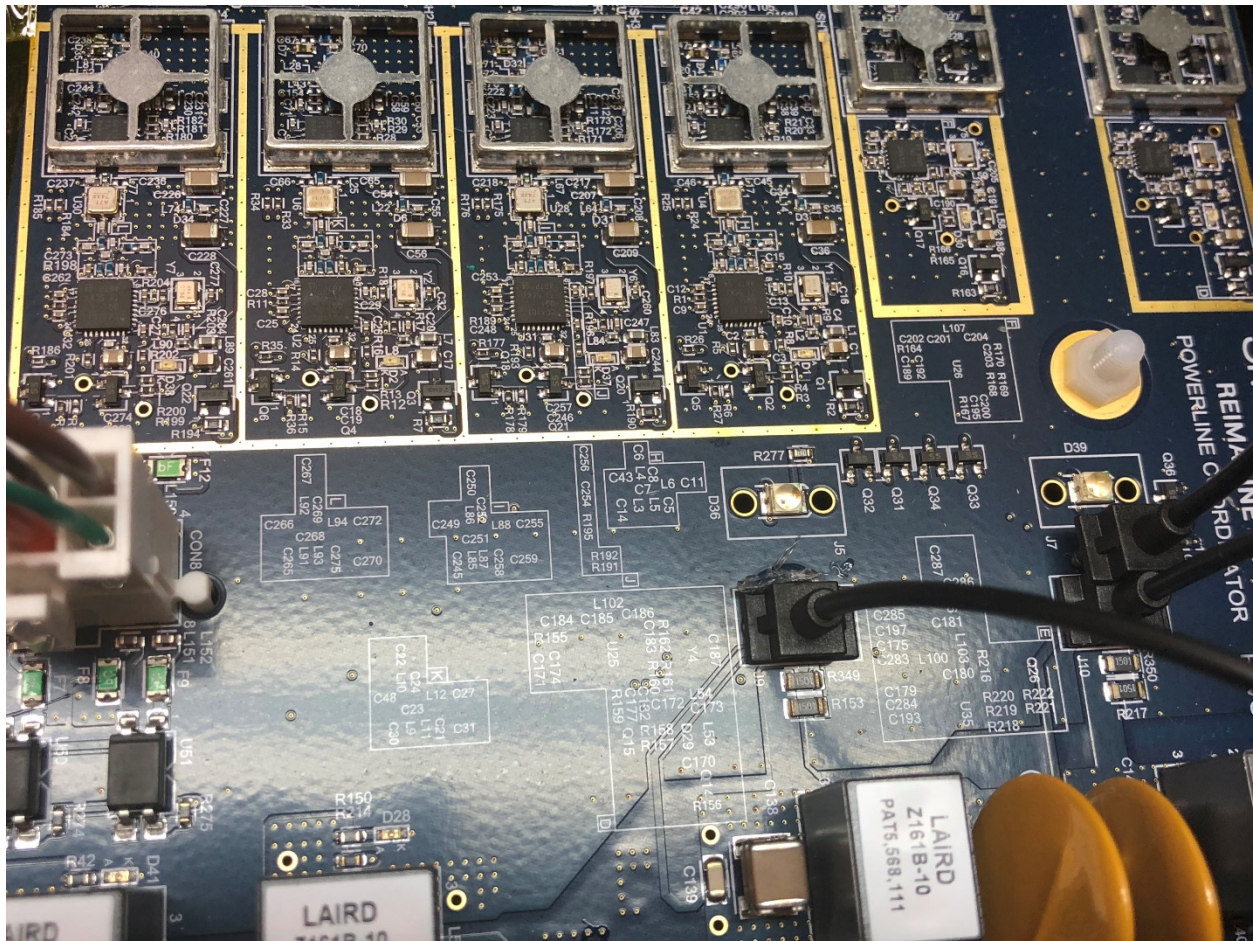


PLC enclosure top view with cover removed, high-level assembly.

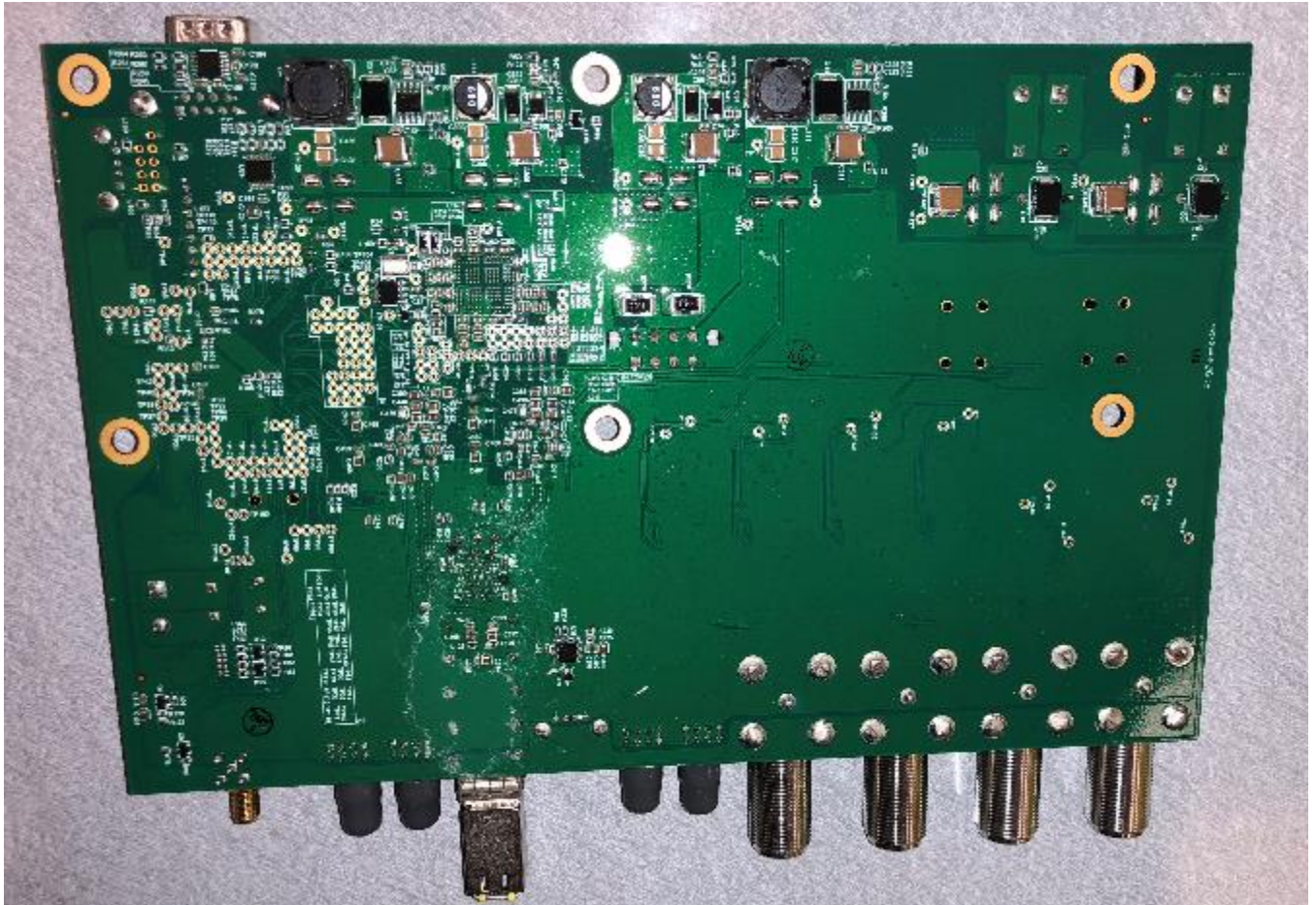






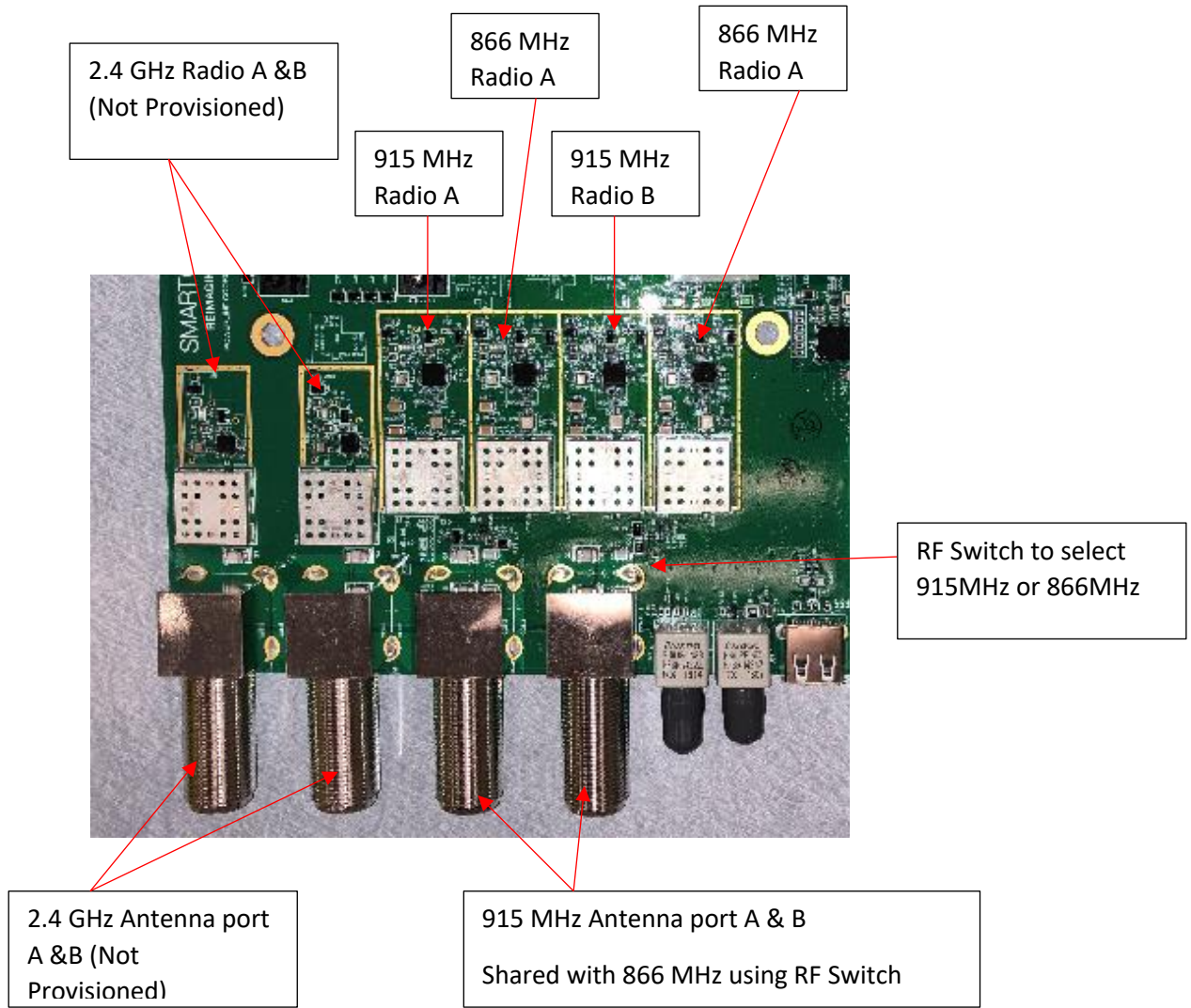


PLC PCBA top view RF section close up



**PLC Bottom PCBA view**

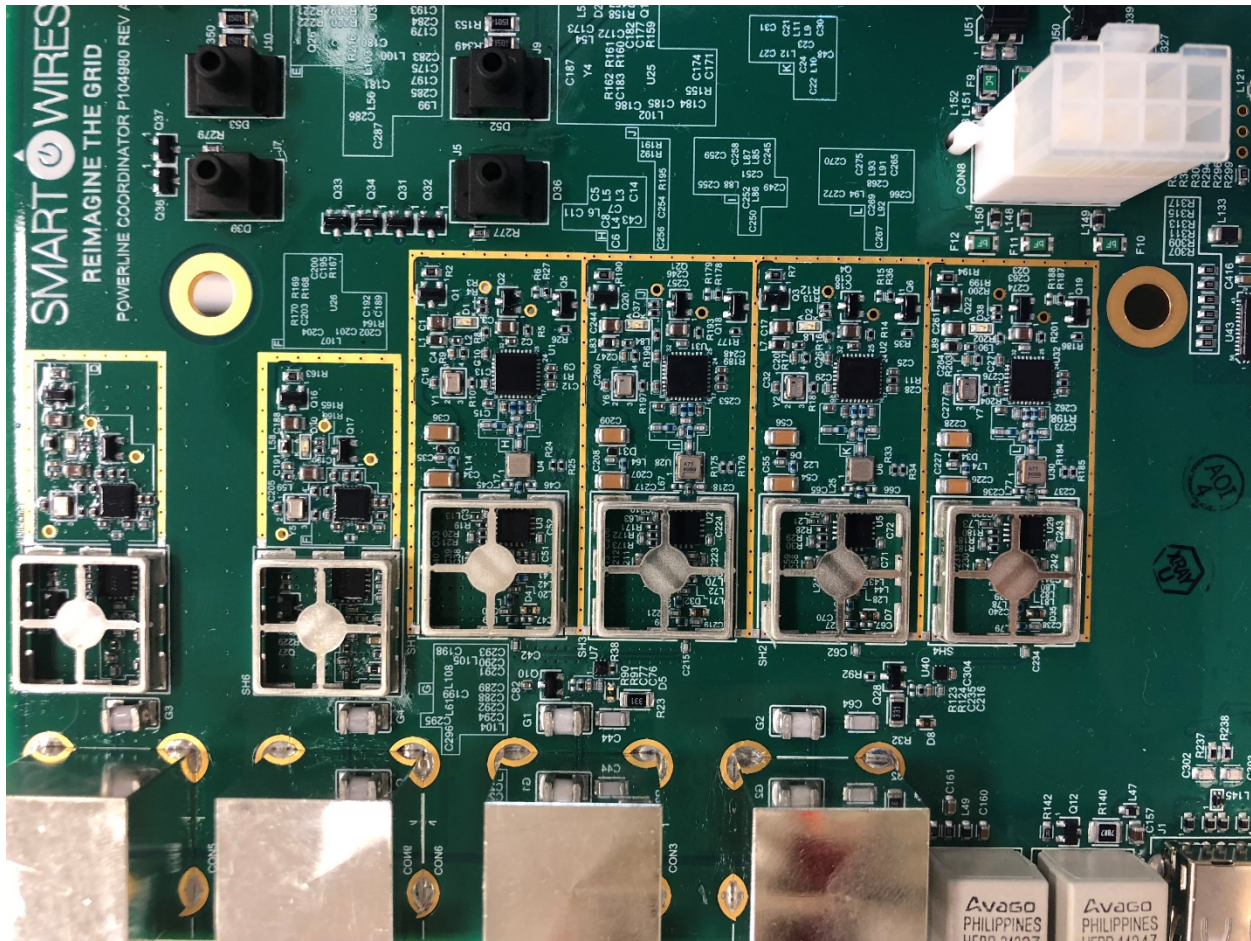




**Notes:**

1. 2.4 GHz operation is not supported in this version and is provisioned for future use
2. The system has provision for redundant radios for each frequency. Only One radio is active at any given time.
3. 866 MHz radios are provisioned for use in the European market only where 915 MHz is disabled.

**PLC radio layout description**



PLC RF section EMC shield removed PCBA view top



**Note:\* 2.4 GHz operation is not supported in this version and is provisioned for future use. These ports are blocked**