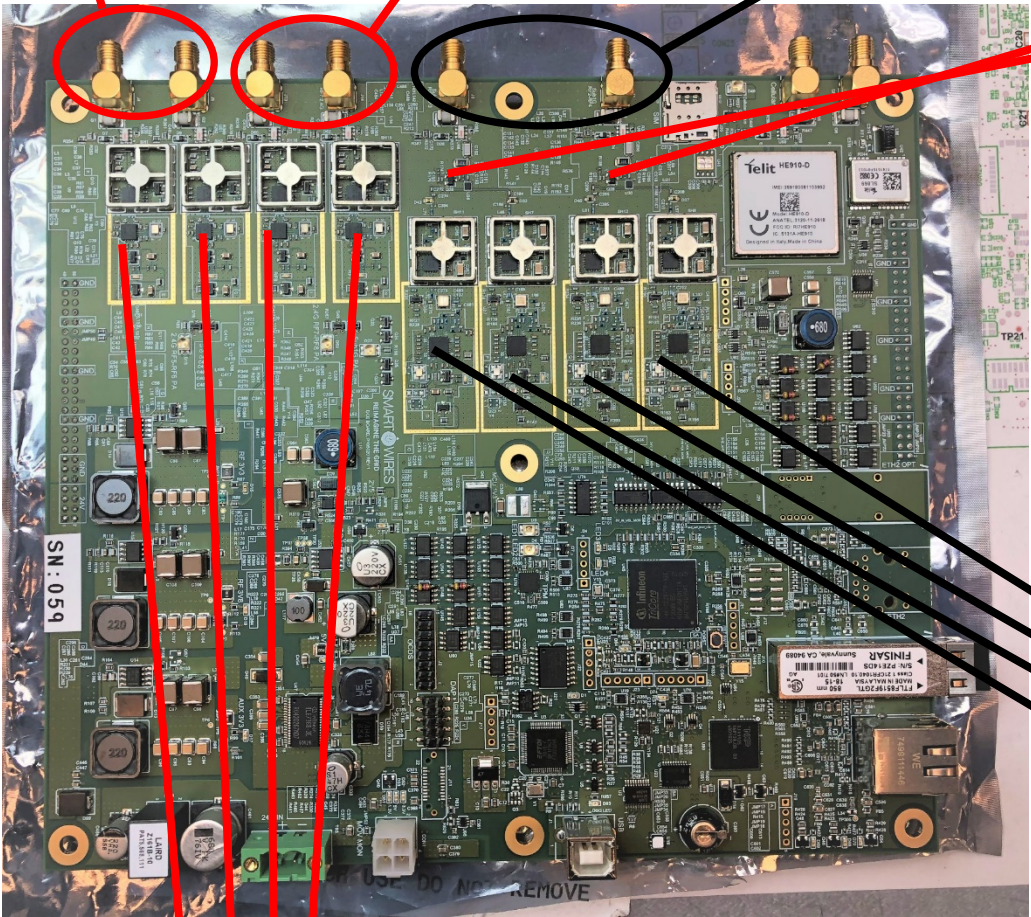


2.4 Ghz Antenna Ports B & A

2.4 Ghz Antenna Ports D & C

These ports are not supported in this version

RF switches



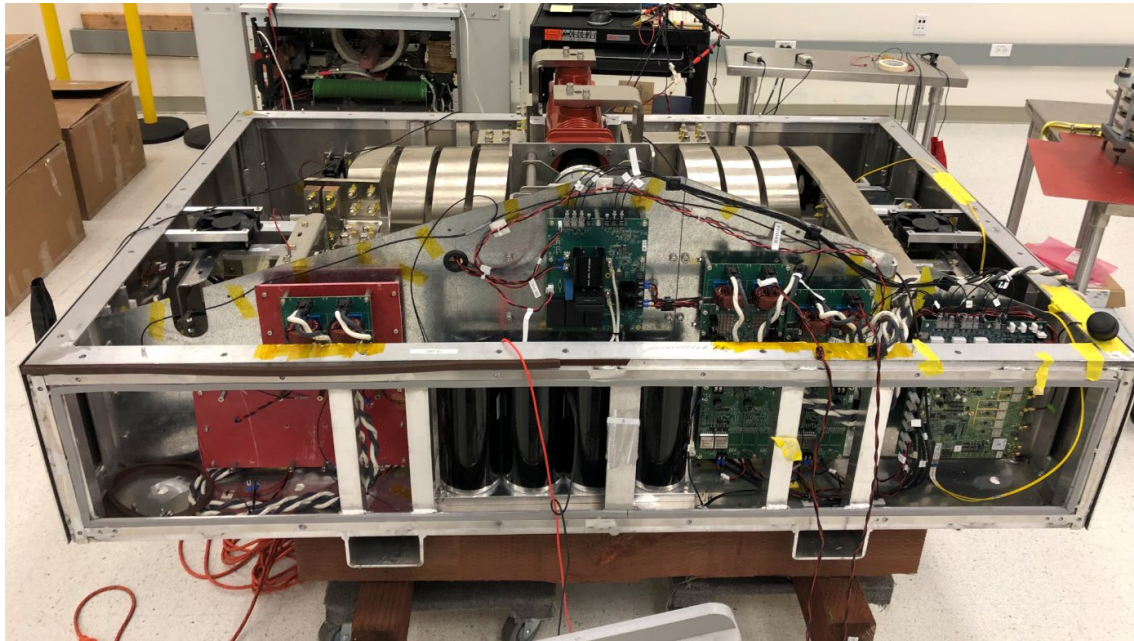
2.4 Ghz Radio B, A, D, C

These radios are not supported in this version

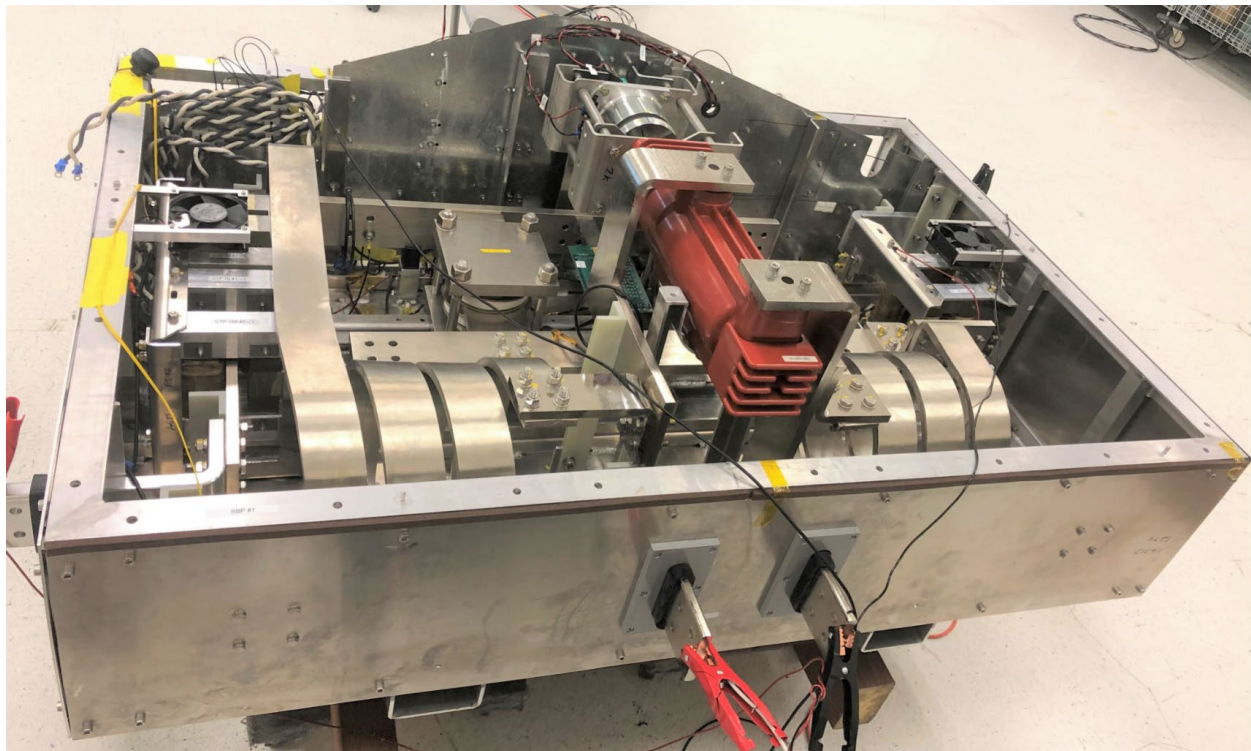
SmartBypass DCE PCBA RF section

SmartBypass Model 2000

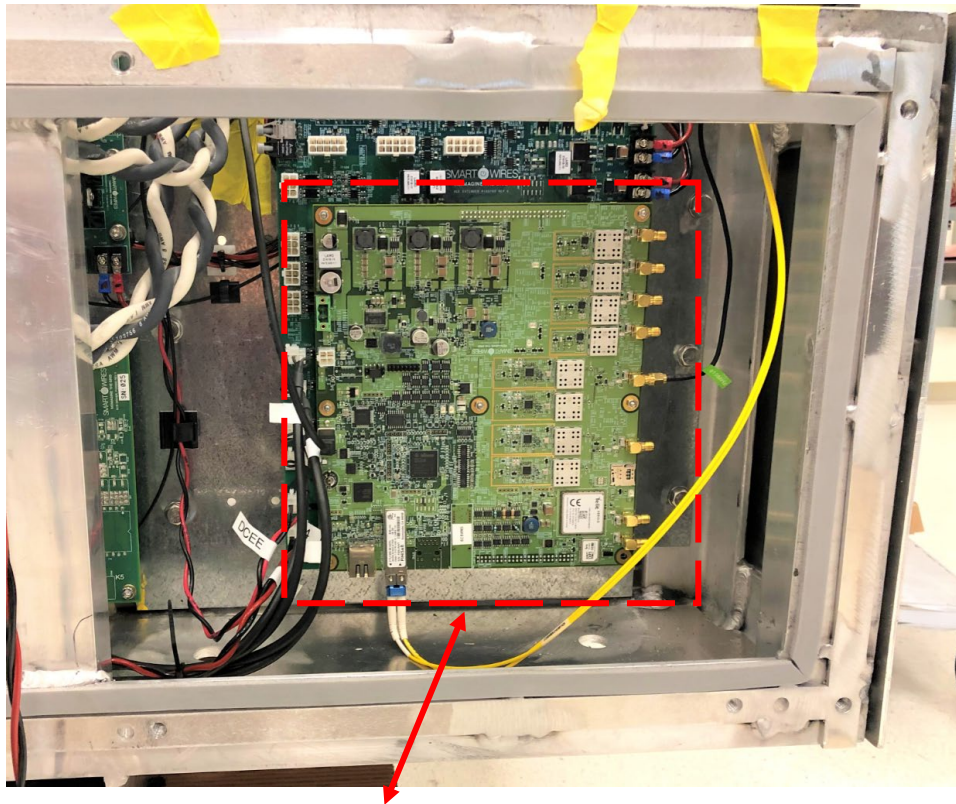
Internal Photos



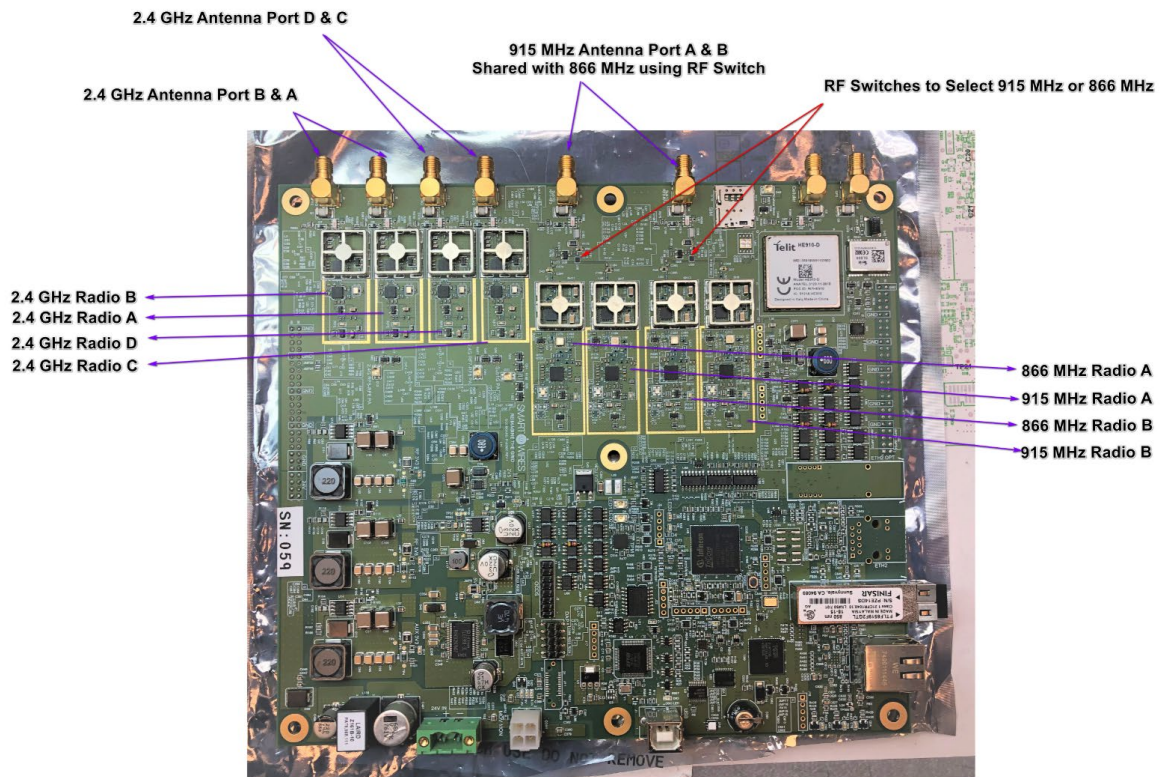
Covers and top frame removed (front view)



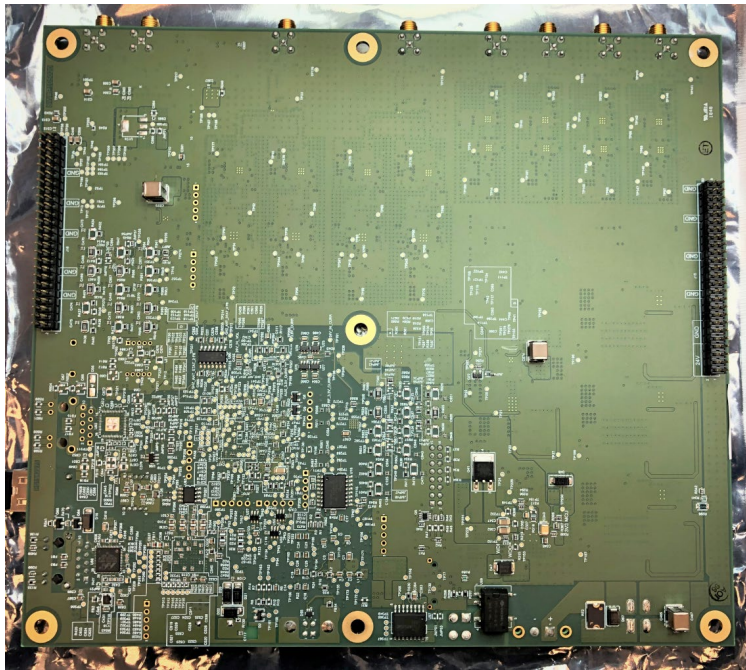
SmartBypass. Top frame removed (rear view)



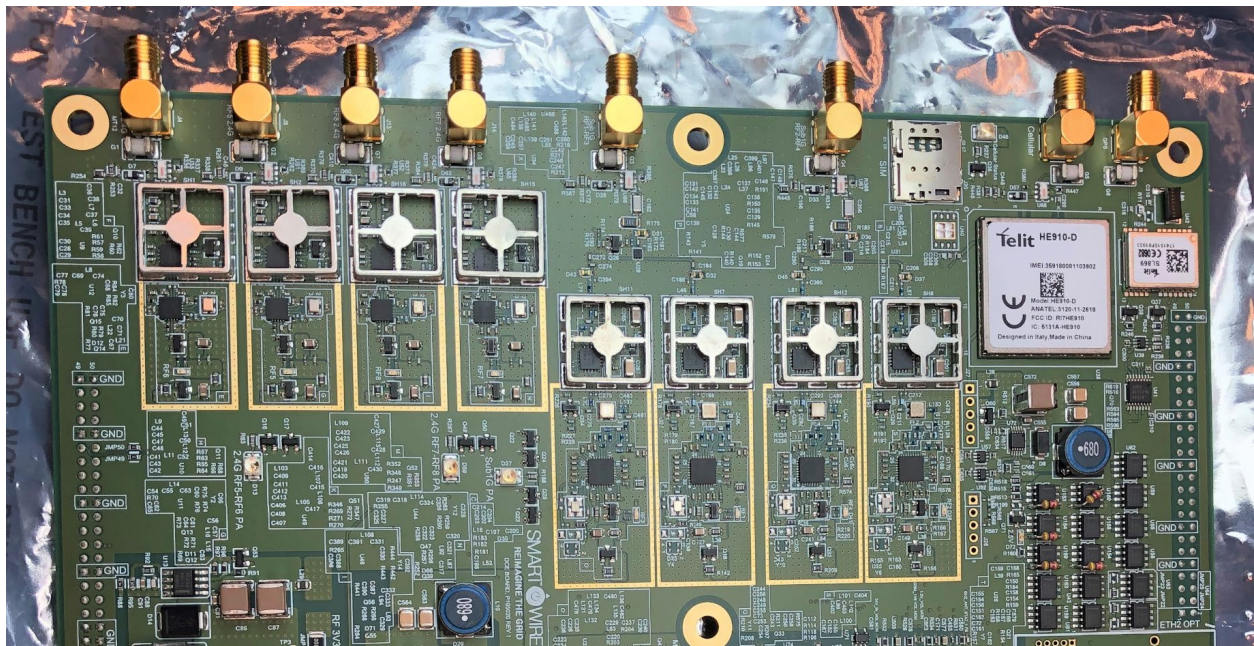
SmartBypass, RF and communications PCBA (DCE Board)



P105704 DCE RF Layout PCBA (EMC shields removed)

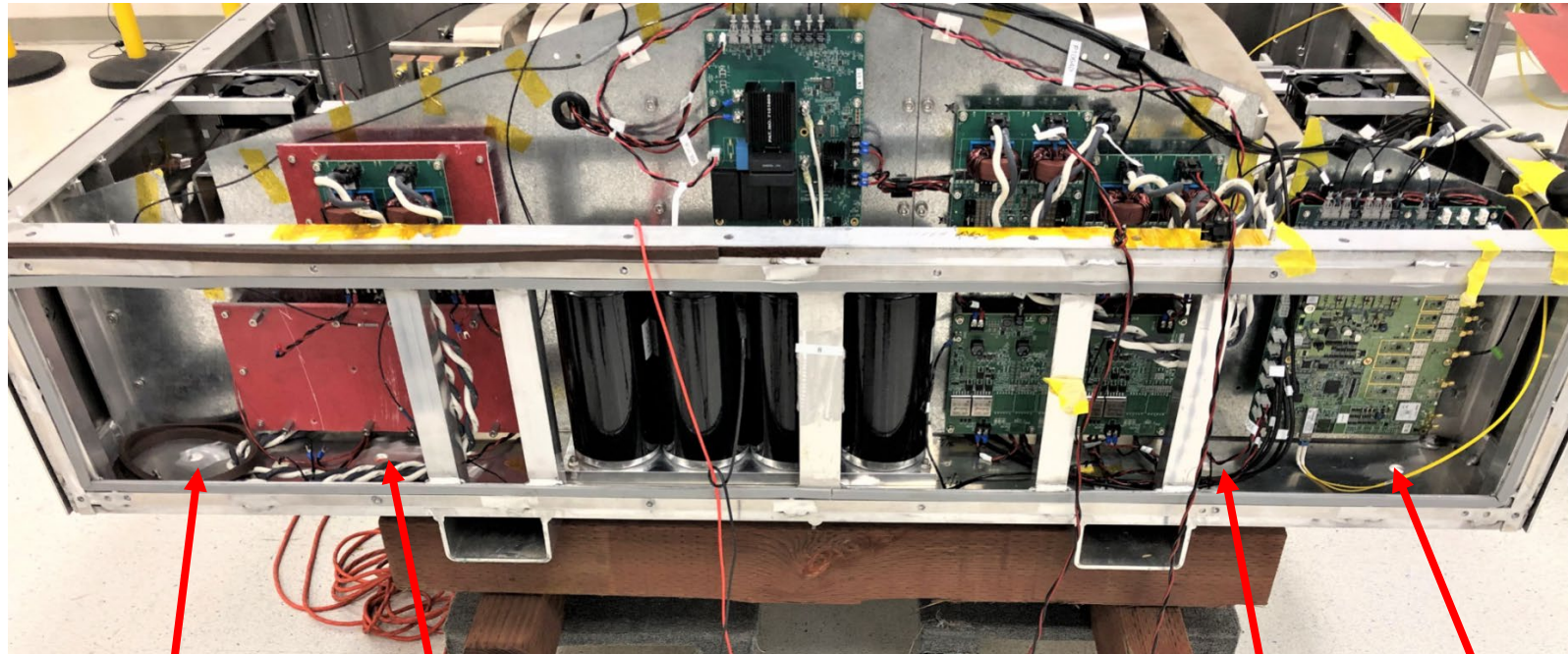


P105704 DCE RF PCBA (bottom view)



P105704 DCE RF PCBA Radios (closeup)

SmartBypass™ Antenna Location



ISM (915 MHz)
Antenna
TaoGlas
IS.05.B.301111

ISM (2.4Ghz)
Antenna
TaoGlas
WS.02.B.20511

ISM (2.4Ghz)
Antenna
TaoGlas
WS.02.B.20511

ISM (915 MHz)
Antenna
TaoGlas
IS.05.B.301111



GPS Antenna
TaoGlas
A.01.C.301111

Note:

1. The system has provision for redundant radios for each frequency. Only One radio is active at any given time.

2. 866 MHz radios are not supported in this version and they are provisioned only for future use in the European market only where 915 MHz is disabled.