

## Power Guardian Internal Photos



**PG-390 -KVA-850A.  
74.9"x32"x23.7". weight: 3600 lbs.**



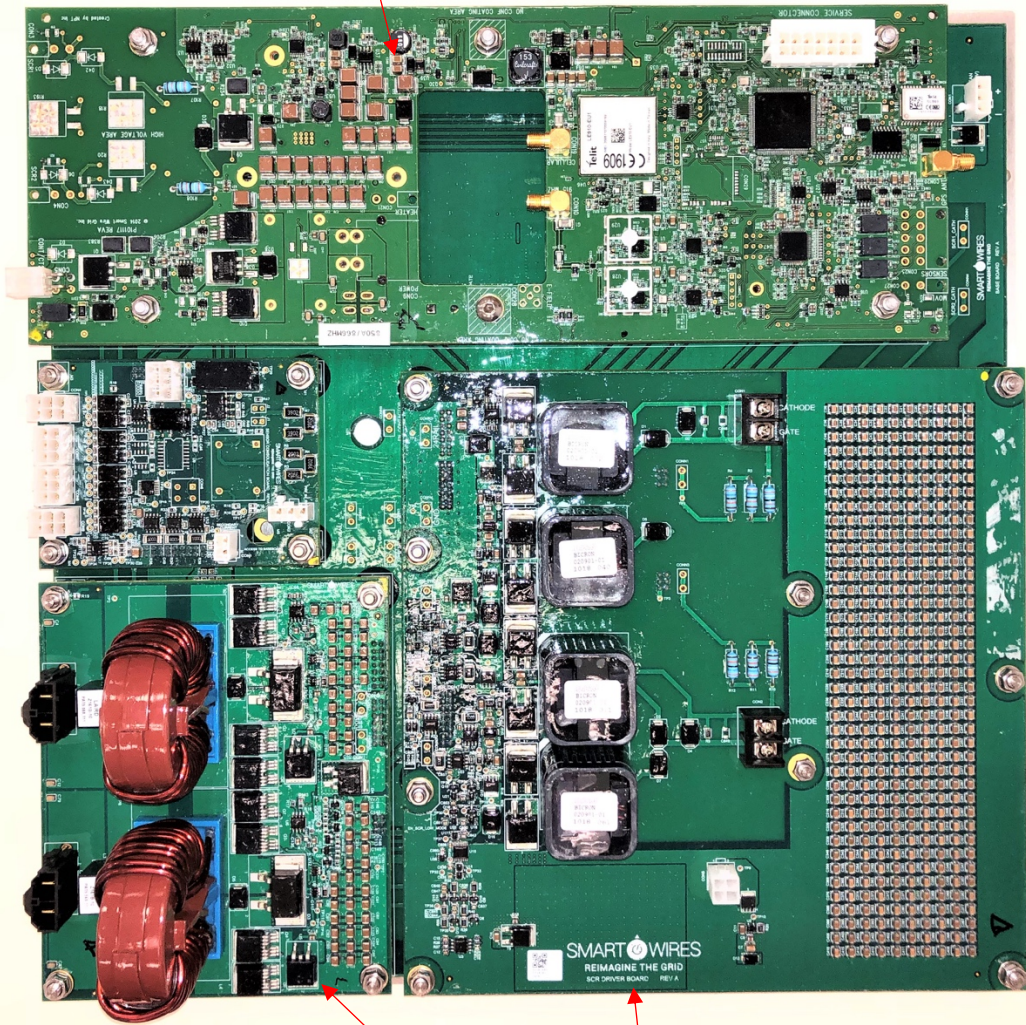
GPS Antenna  
TaoGlas  
A.01.C.301111

GSM Antenna  
TaoGlas  
G21.B.301111

ISM (915 MHz)  
Antenna  
TaoGlas  
IS.05.B.301111

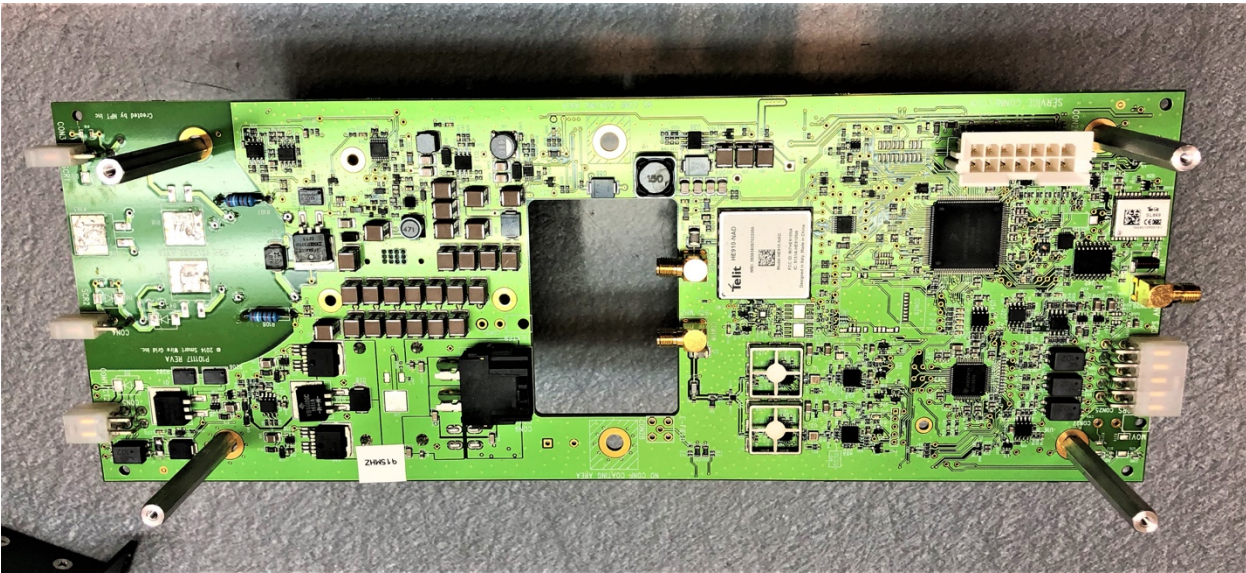
**PG390 electronics and controls**

Control Board , RF and Communications PCBA

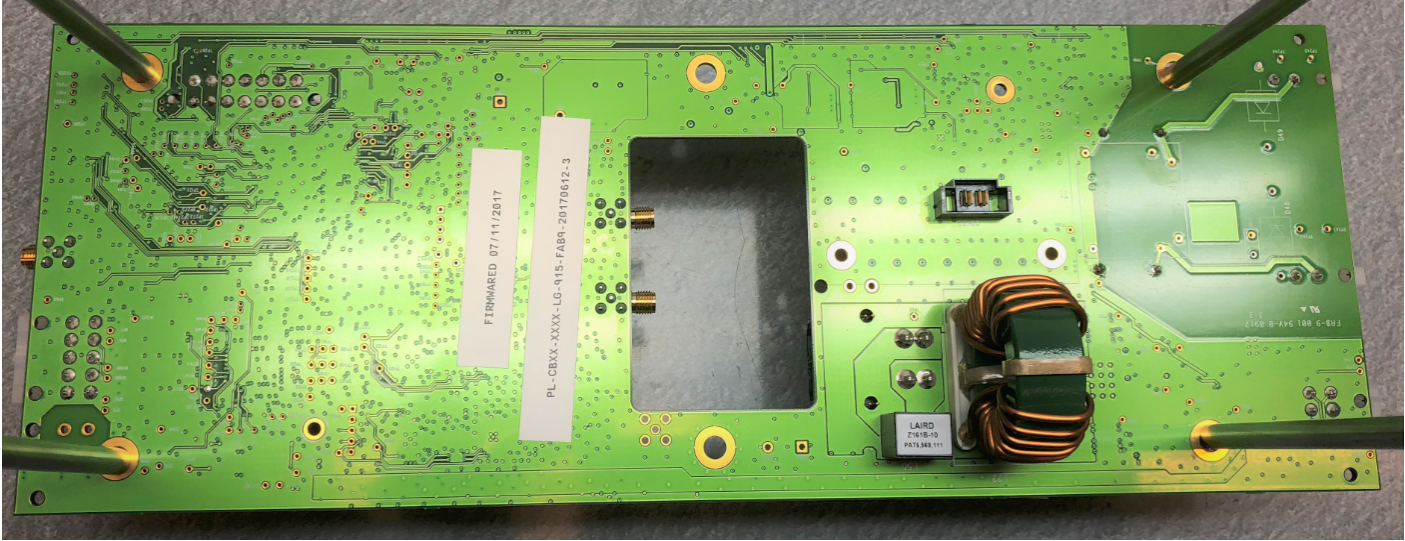


Carrier board and Power Supply PCBA (Non-RF related)

**PG-390 PCBA electronics and controls**



**Control Board and Communication PCBA top View radios**



**Control Board and communication PCBA (bottom view)**