

Photo 5
(Digital FM Transmitter) Appearance View



Photo 6
(Holder/ Transmitter Base) Remove Top Cover and Bottom Cover, Internal View



Photo 7
(Holder/ Transmitter Base) Main Board, Component Side



Photo 8
(Holder/ Transmitter Base) Main Board, Solder Side

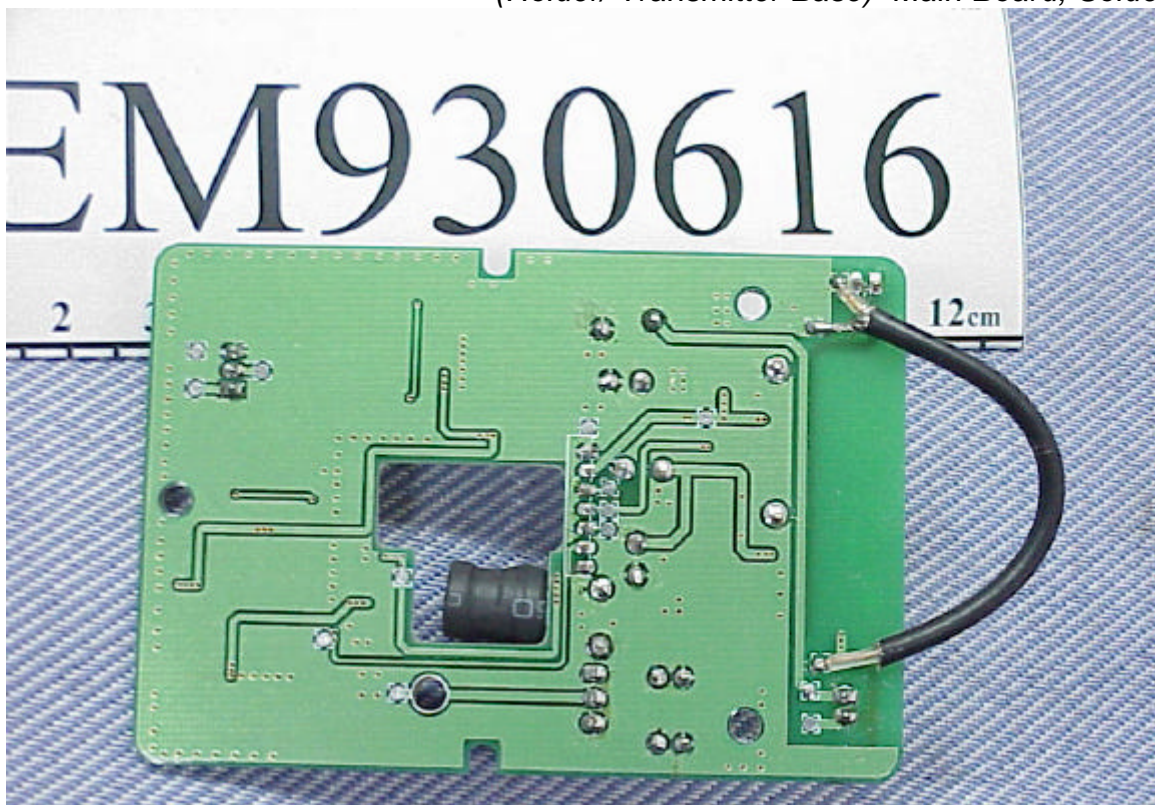


Photo 9
(Holder/ Transmitter Base) Interface Board, Front View

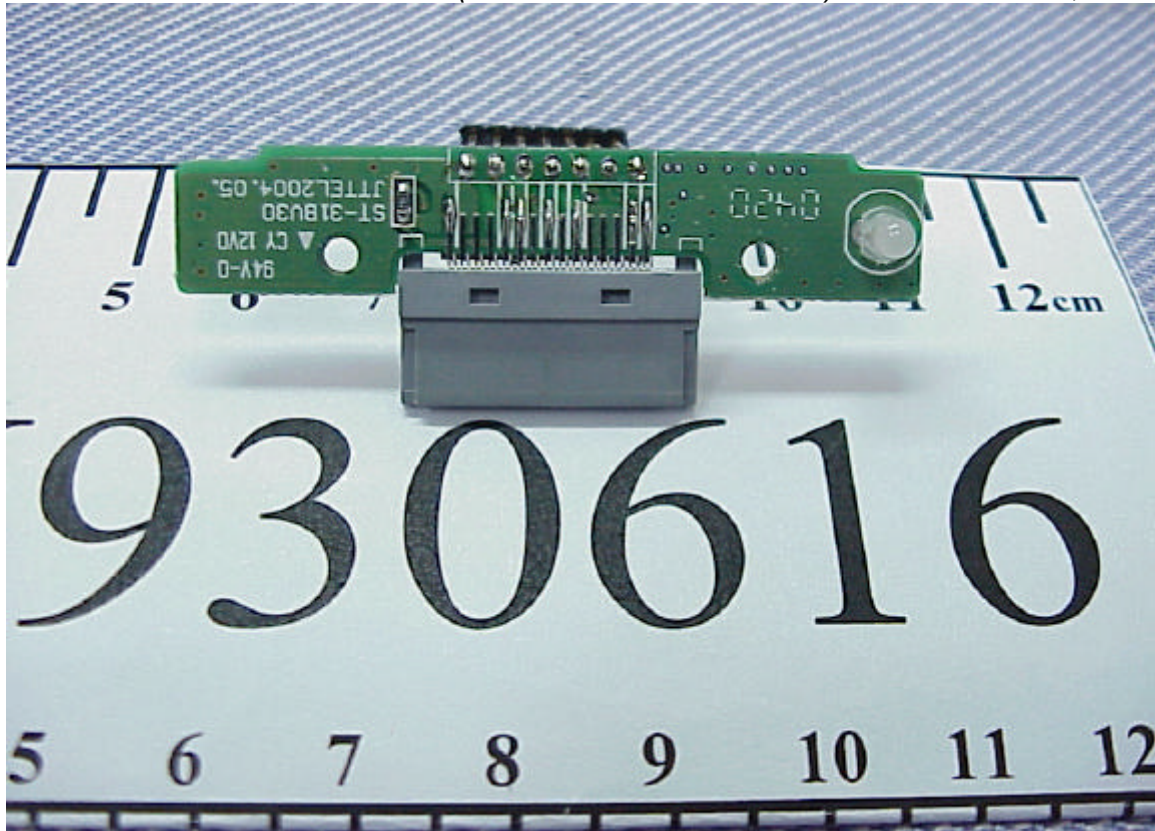


Photo 10
(Holder/ Transmitter Base) Interface Board, Back View

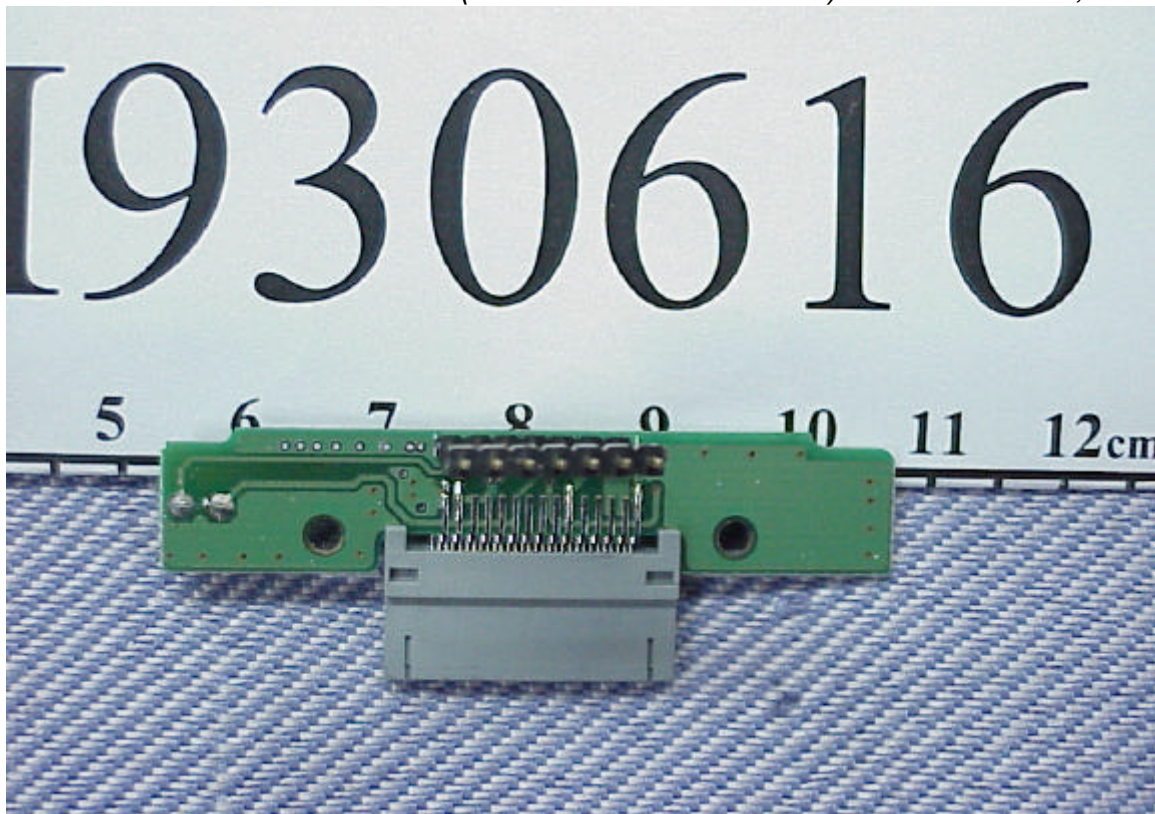


Photo 11
(Power Plug) Remove Top Cover and Bottom Cover, Internal View

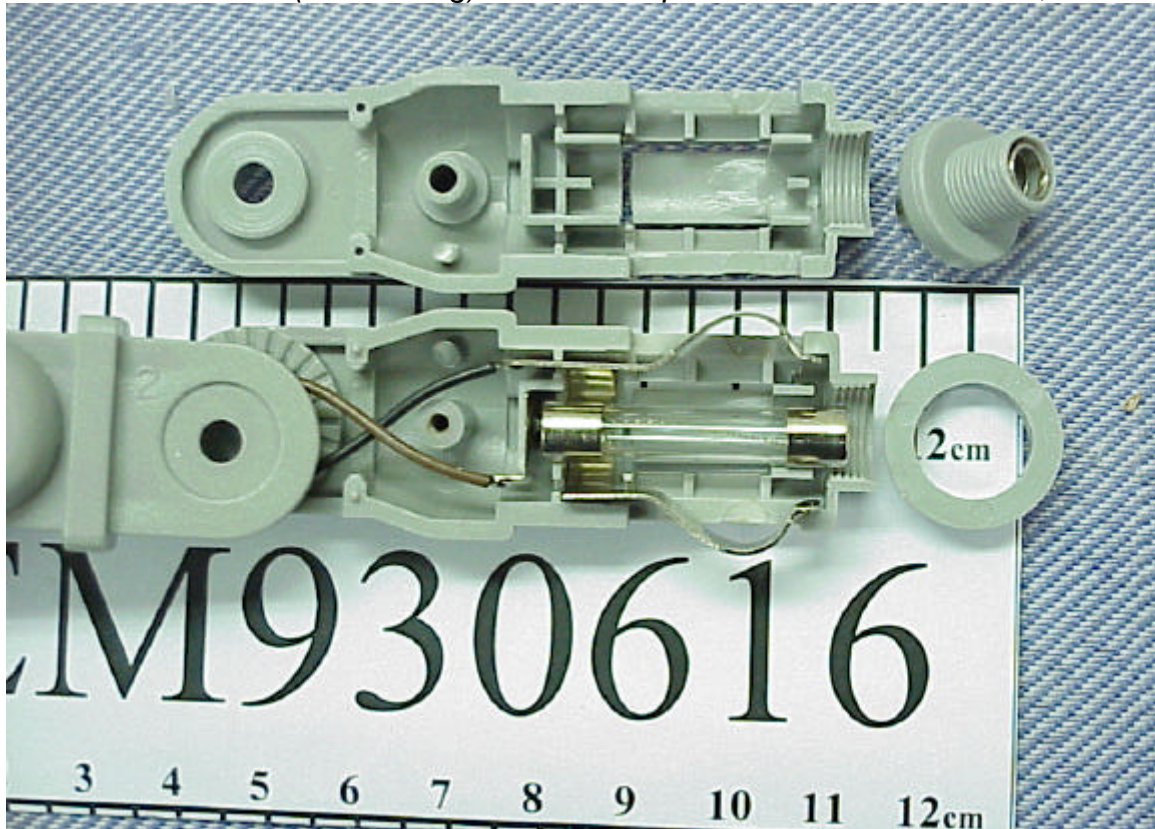


Photo 12
(Digital FM Transmitter) Remove Top Cover and Bottom Cover, Internal View

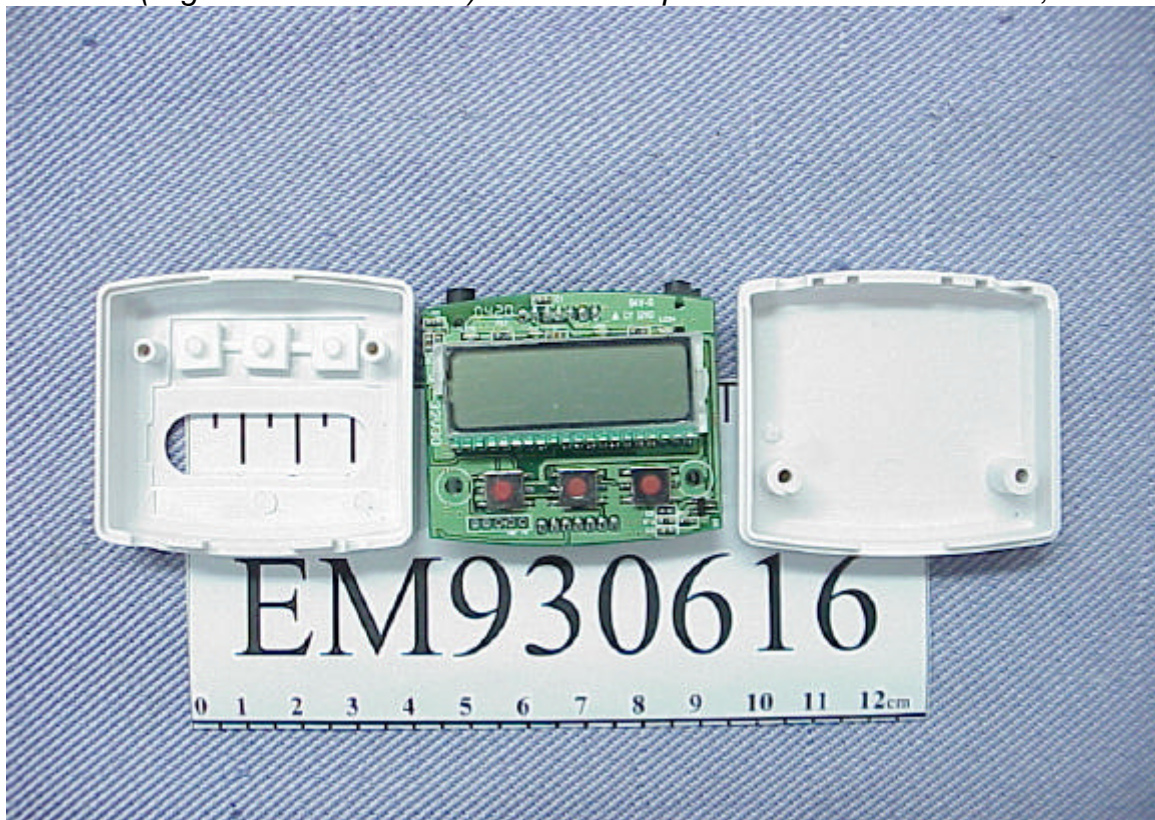


Photo 13
(Digital FM Transmitter) LCD Unit, Back View

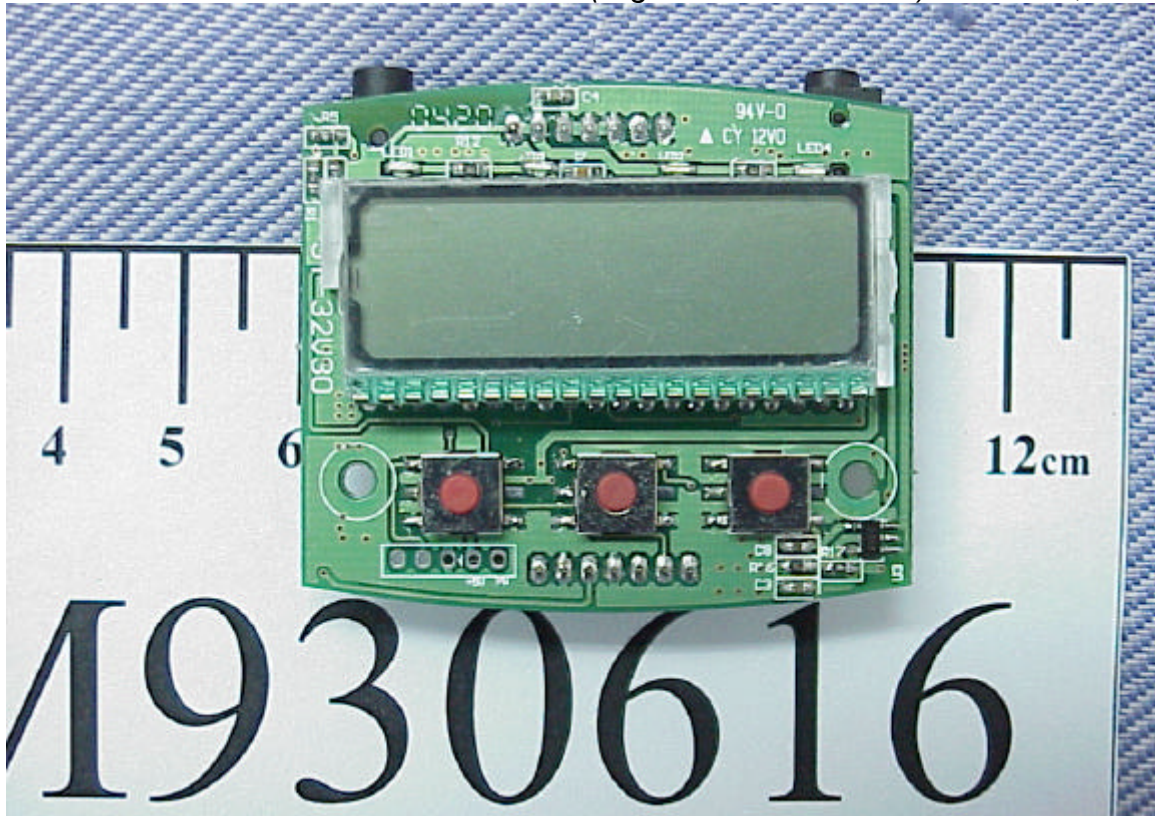


Photo 14
(Digital FM Transmitter) LCD Unit and TX Control Board,

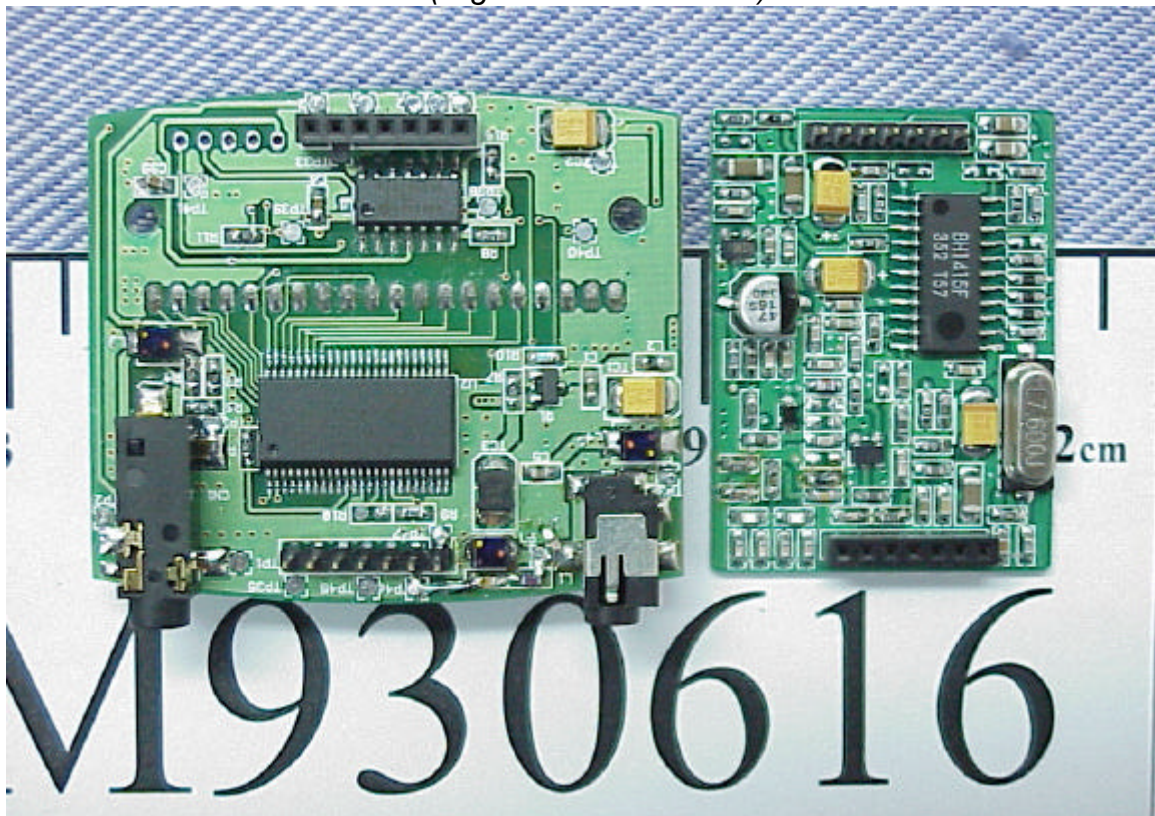


Photo 15
(Digital FM Transmitter) LCD Unit, Front View

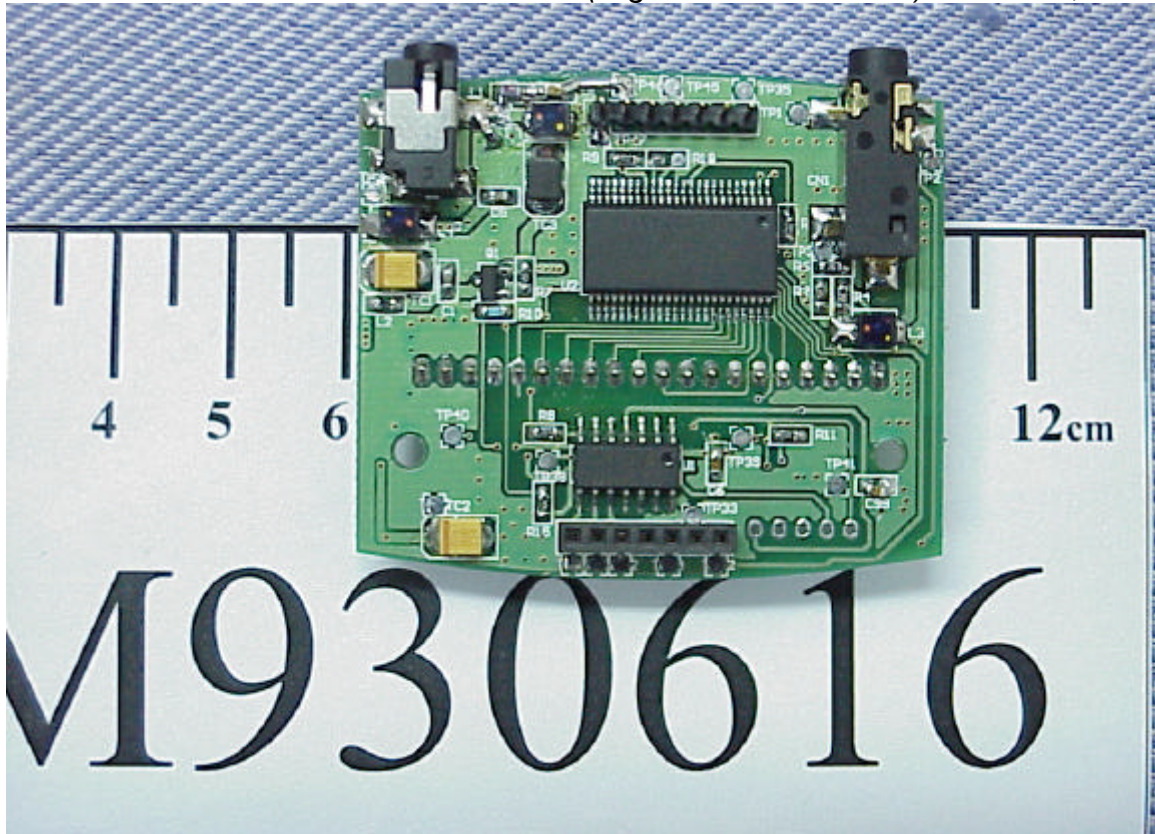


Photo 16
(Digital FM Transmitter) TX Control Board, Component Side

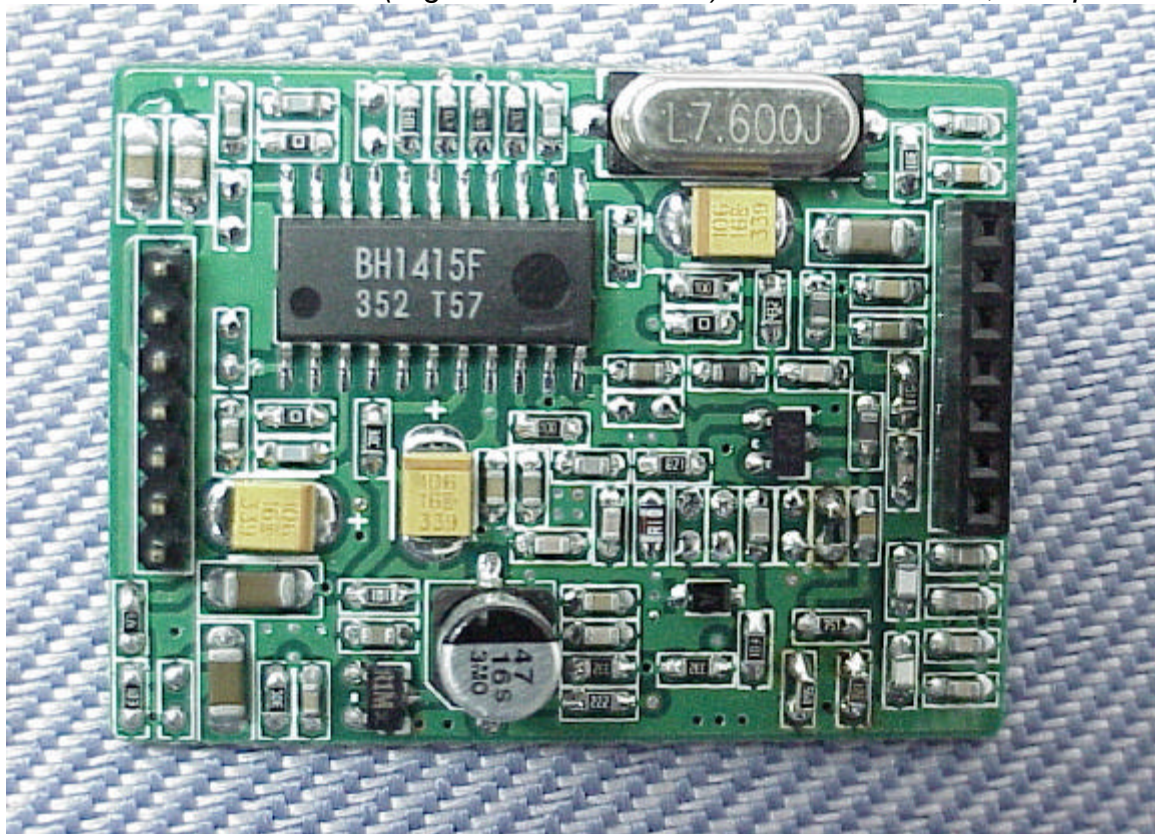


Photo 17
(Digital FM Transmitter) TX Control Board, Solder Side

