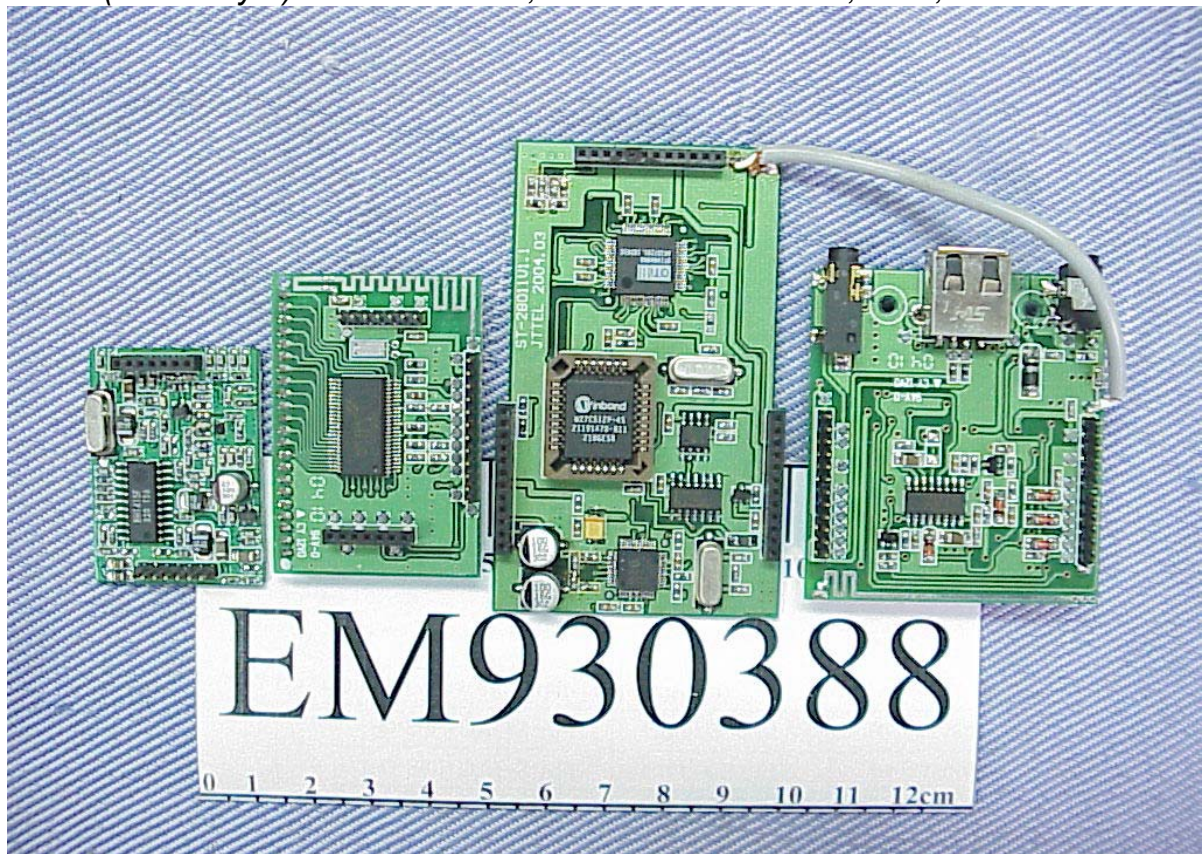


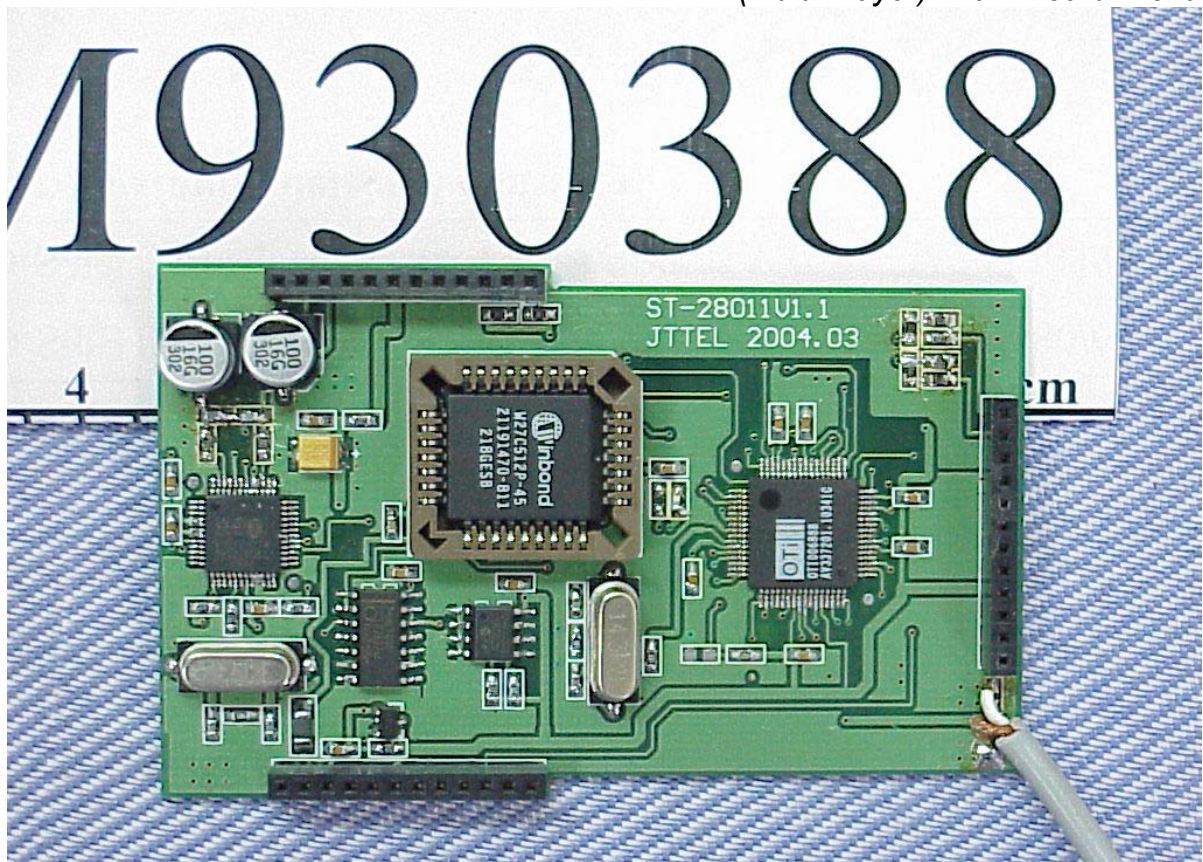
Photos 23
(Multi-Player) Remove Case Covers, Internal View



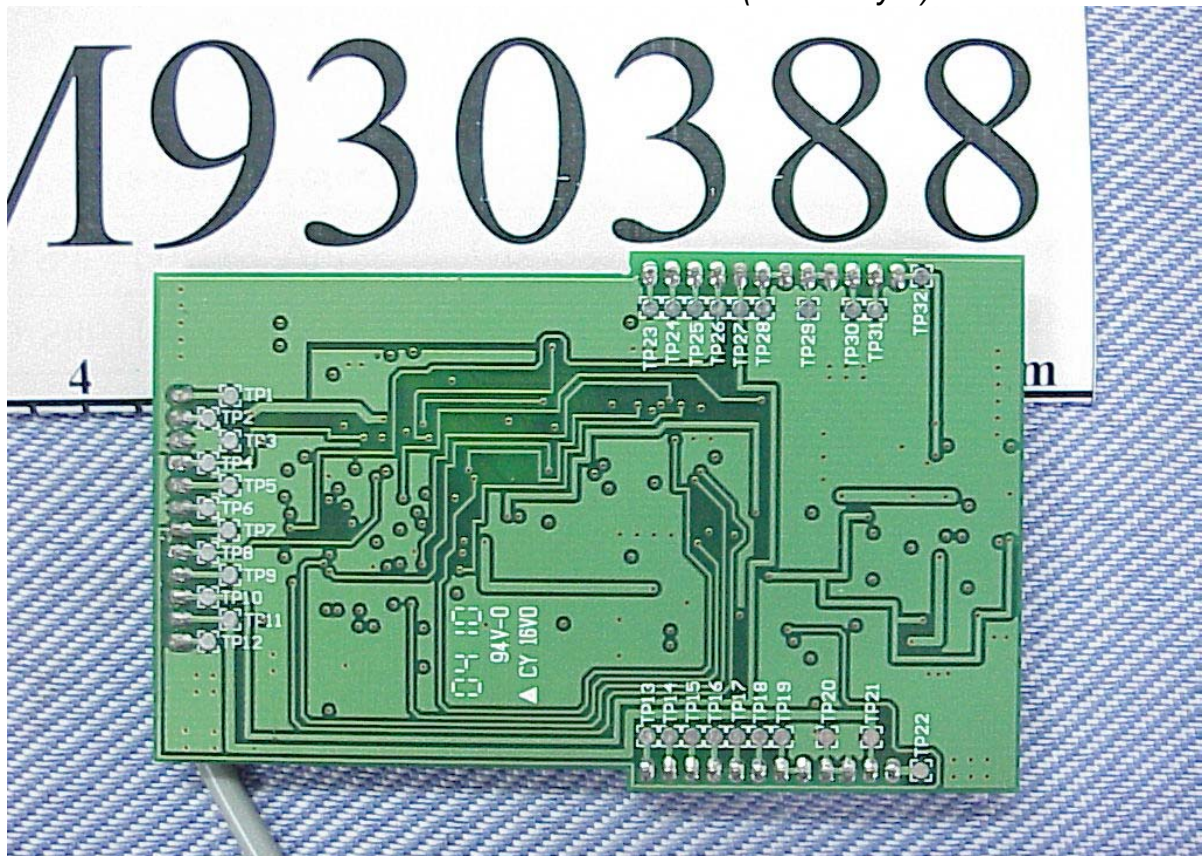
Photos 24
(Multi-Player) FM Transmitter, LCD & RF Connector, Main, Interface Boards View



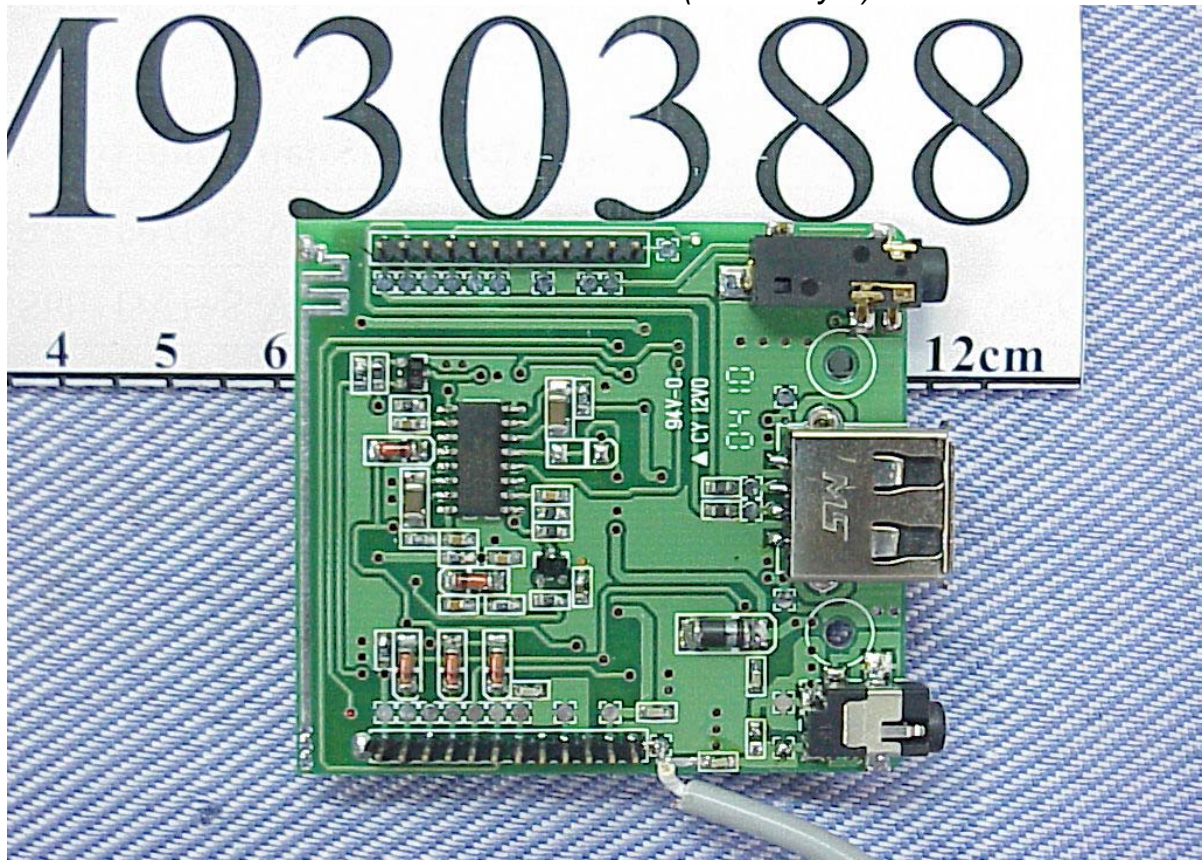
Photos 25
(Multi-Player) Main Board/Front Side



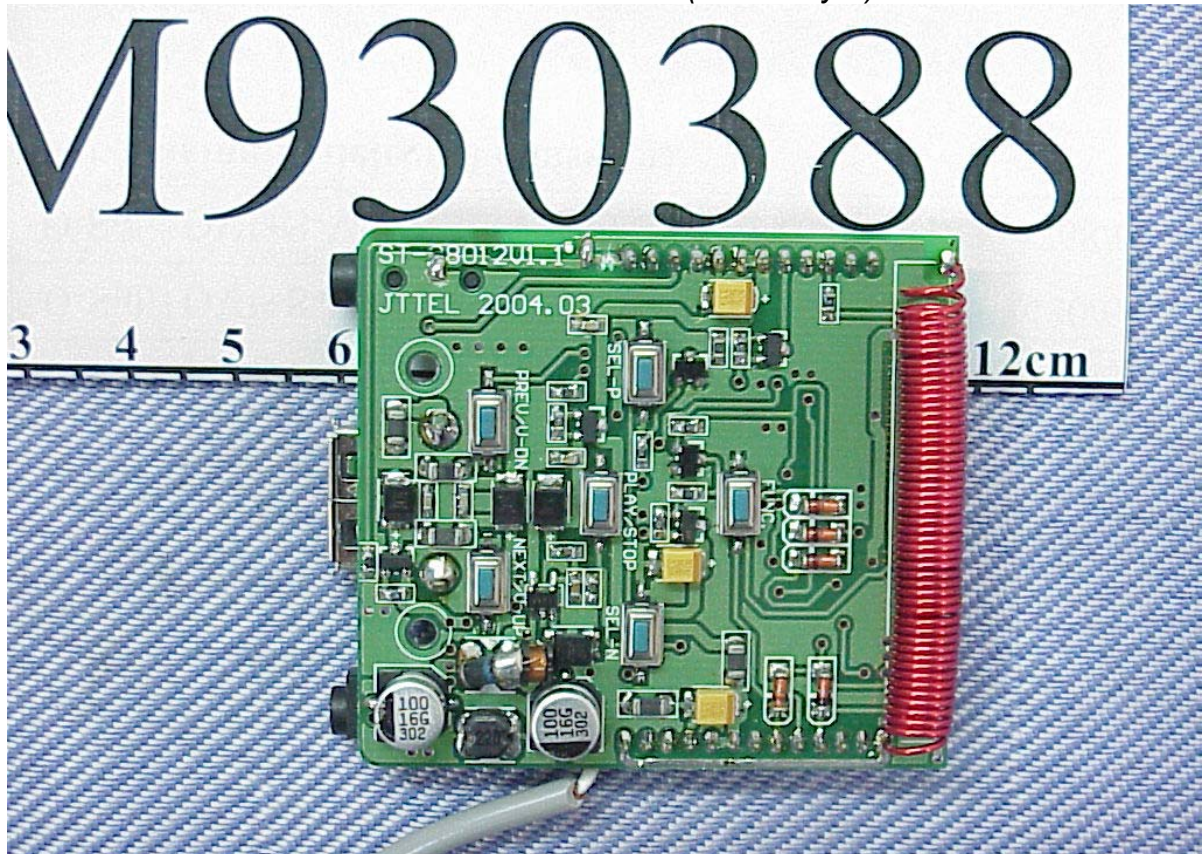
Photos 26
(Multi-Player) Main Board/Back Side



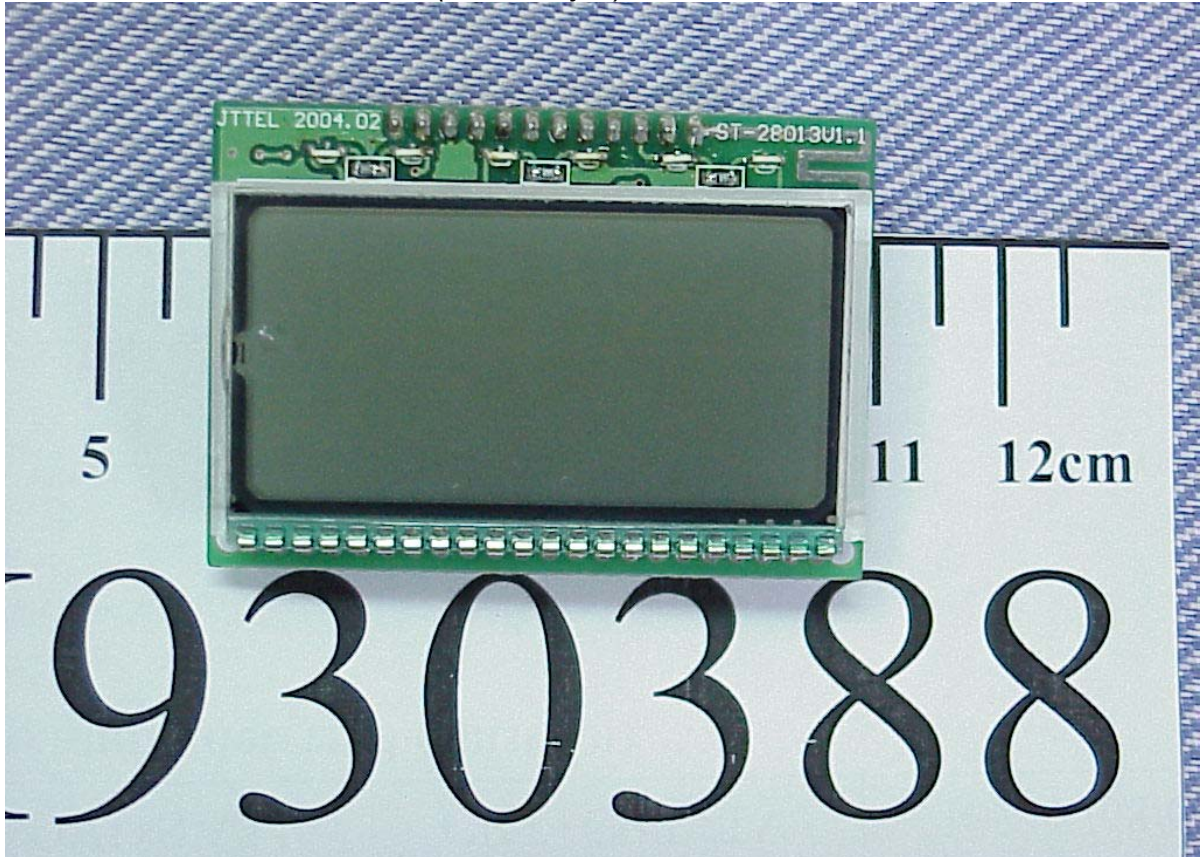
Photos 27
(Multi-Player) Interface Board/Front Side



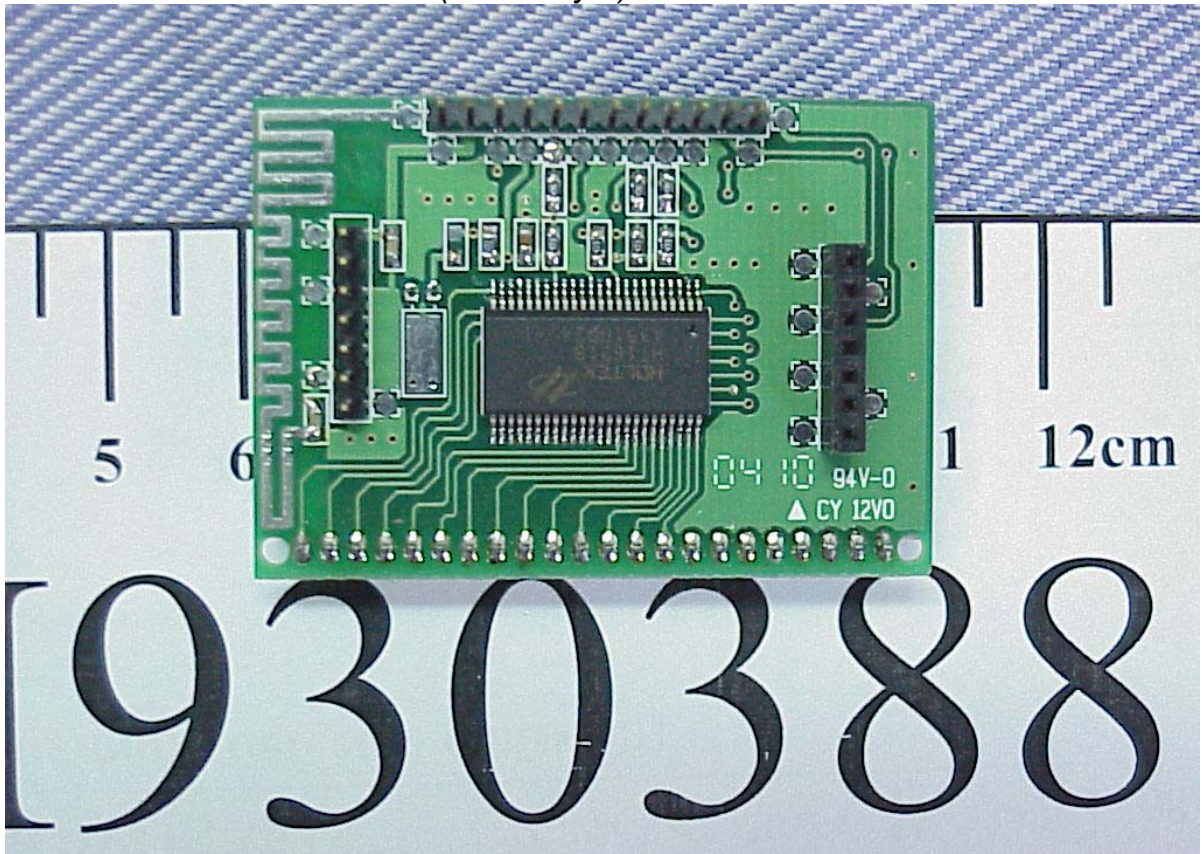
Photos 28
(Multi-Player) Interface Board/Back Side



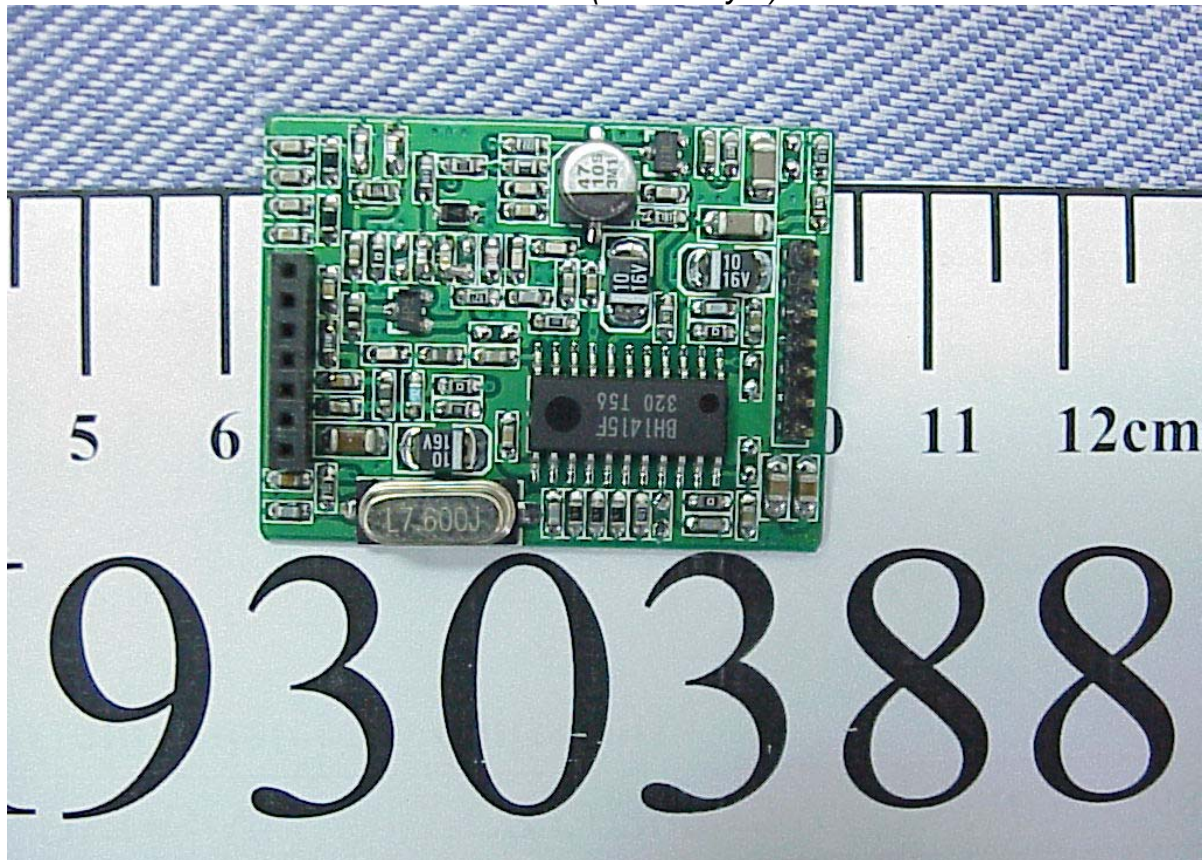
Photos 29
(Multi-Player) LCD Part & RF Connector Board/Front Side



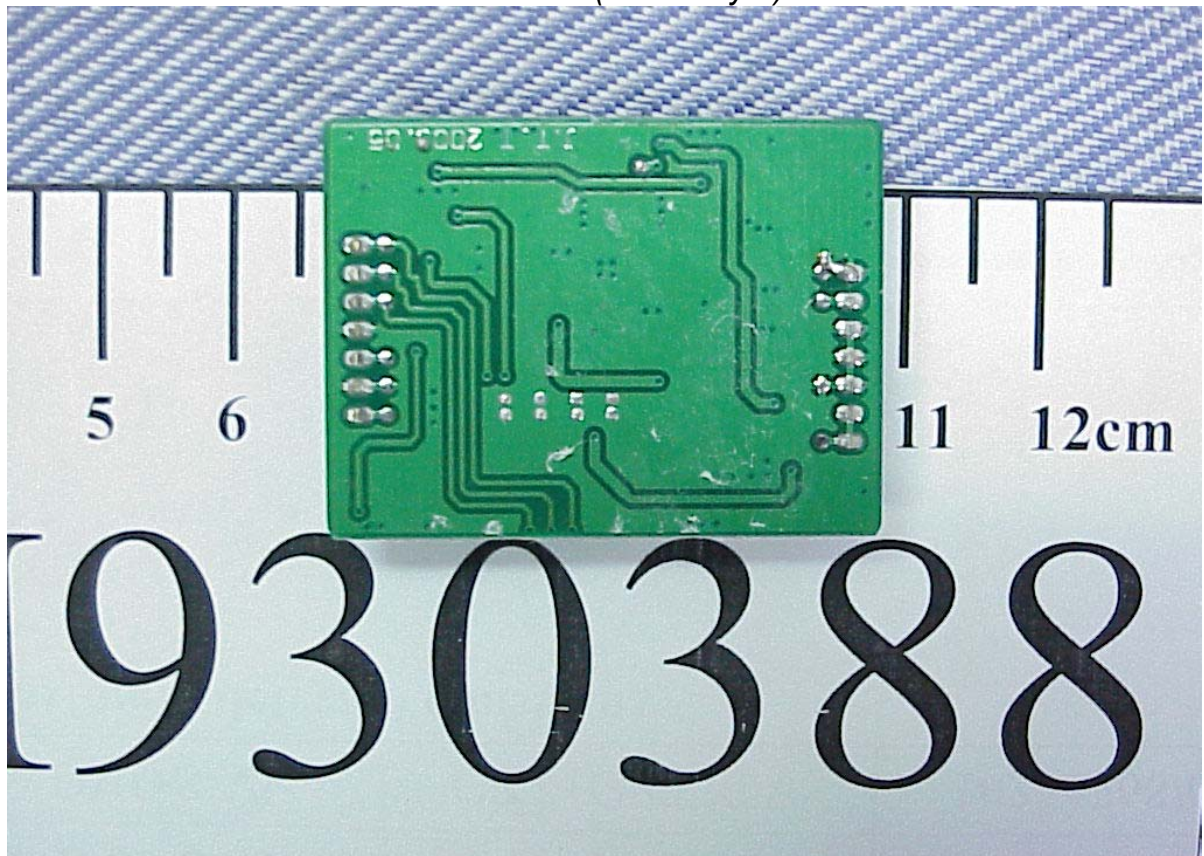
Photos 30
(Multi-Player) LCD Part & RF Connector Board/Back Side



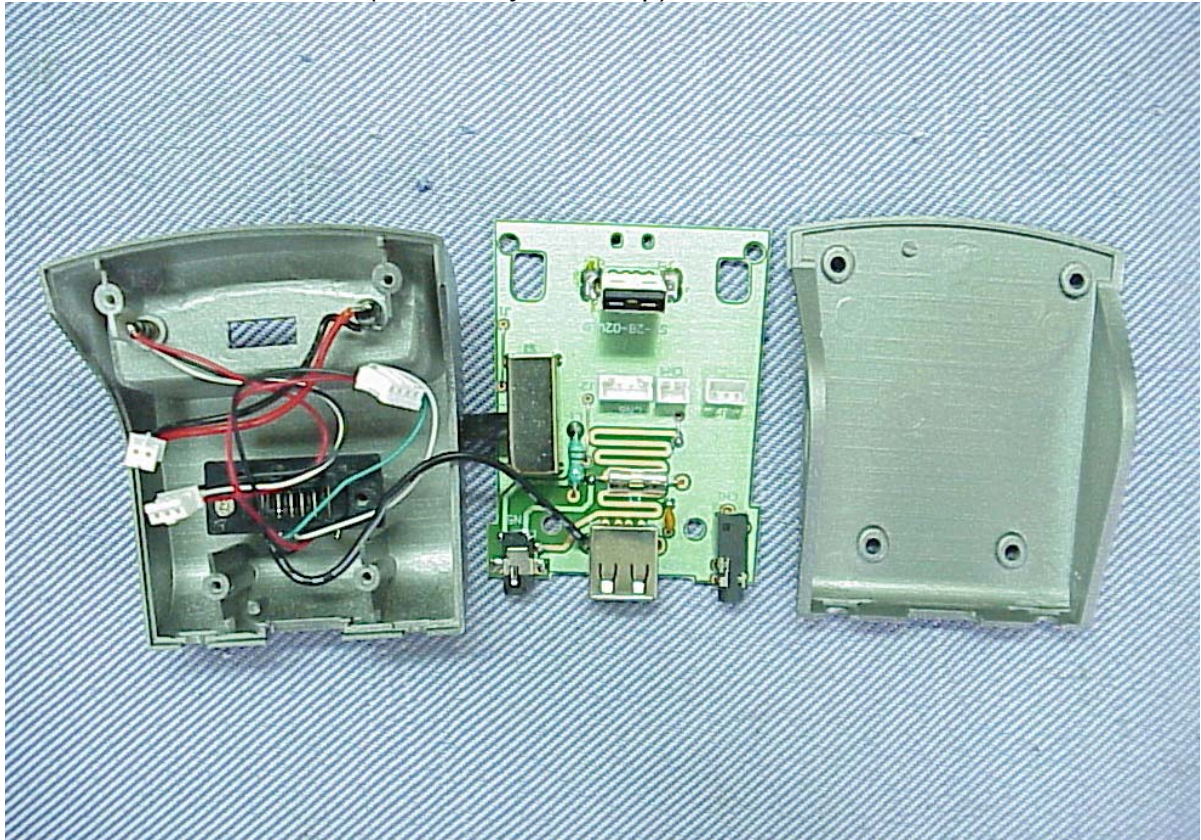
Photos 31
(Multi-Player) FM Transmitter Board/Front Side



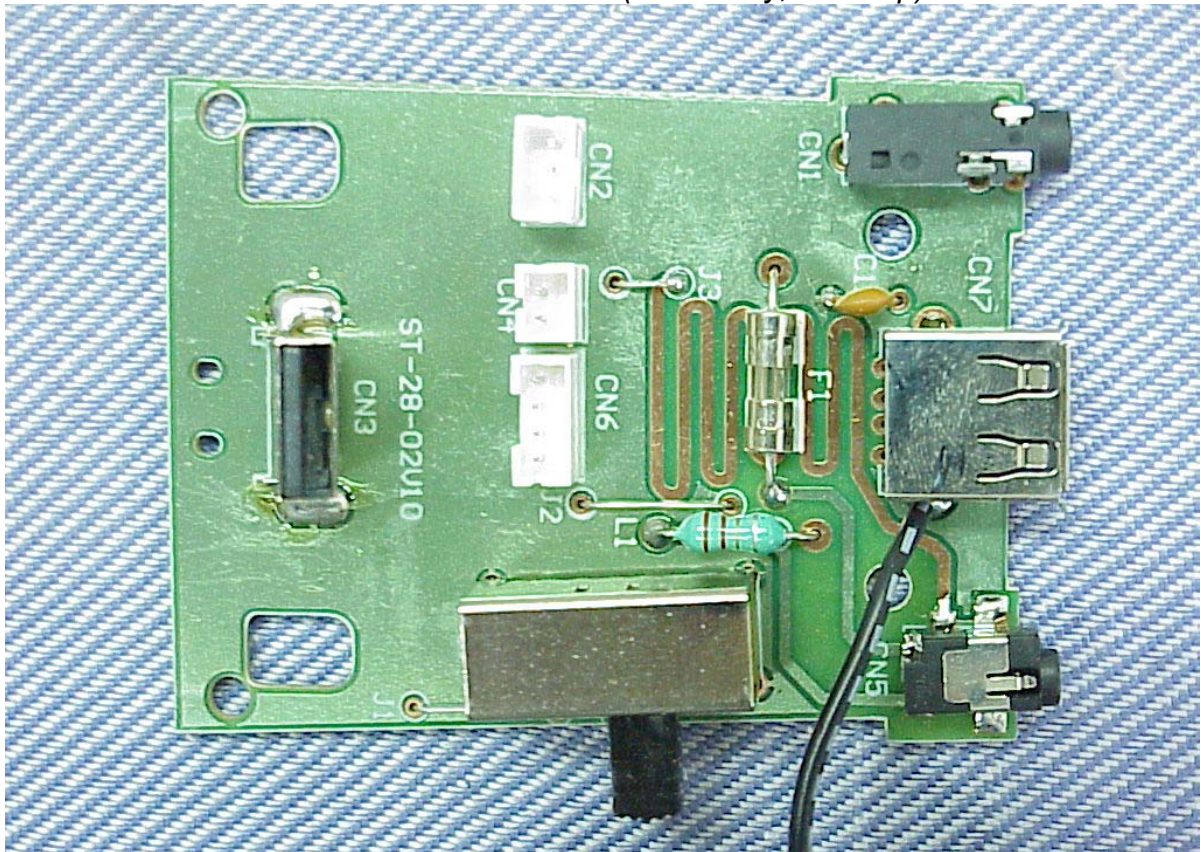
Photos 32
(Multi-Player) FM Transmitter Board/Back Side



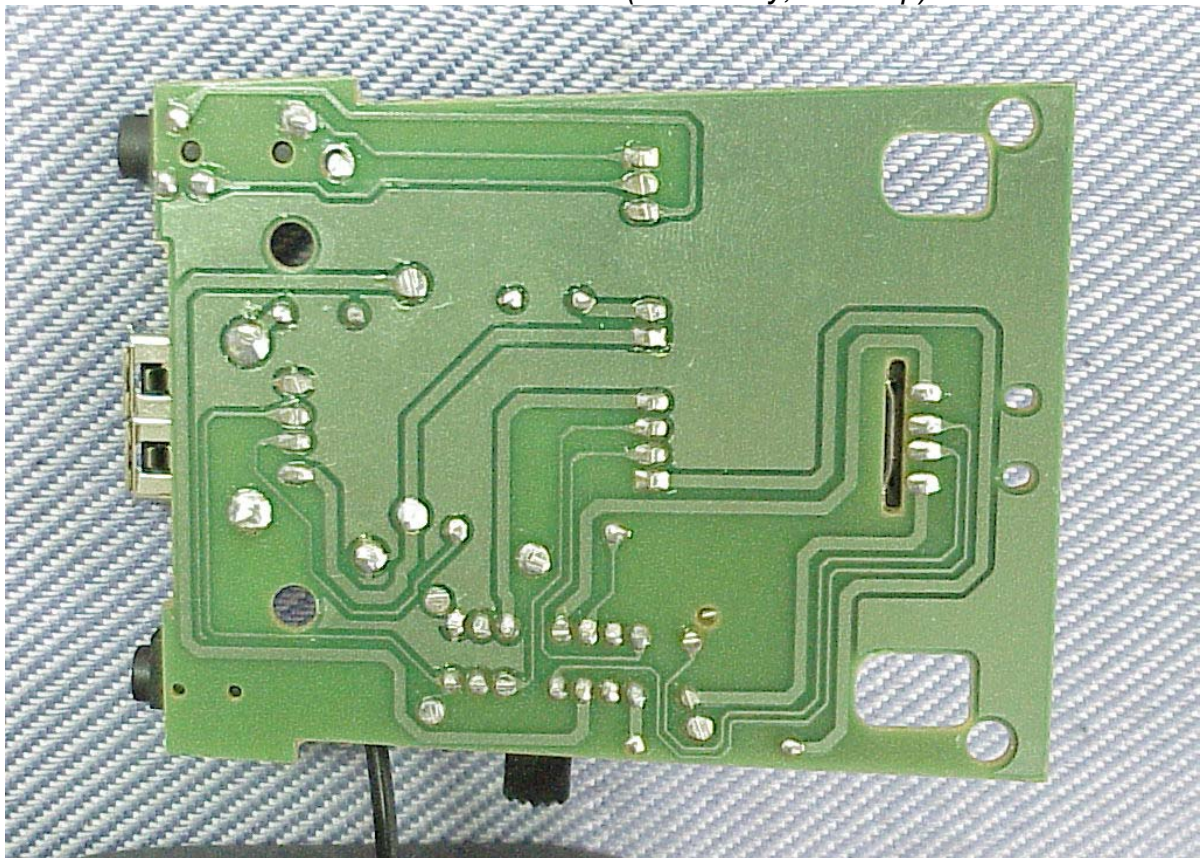
Photos 33
(Accessory, Desktop) Remove Case Covers, Frame of Internal



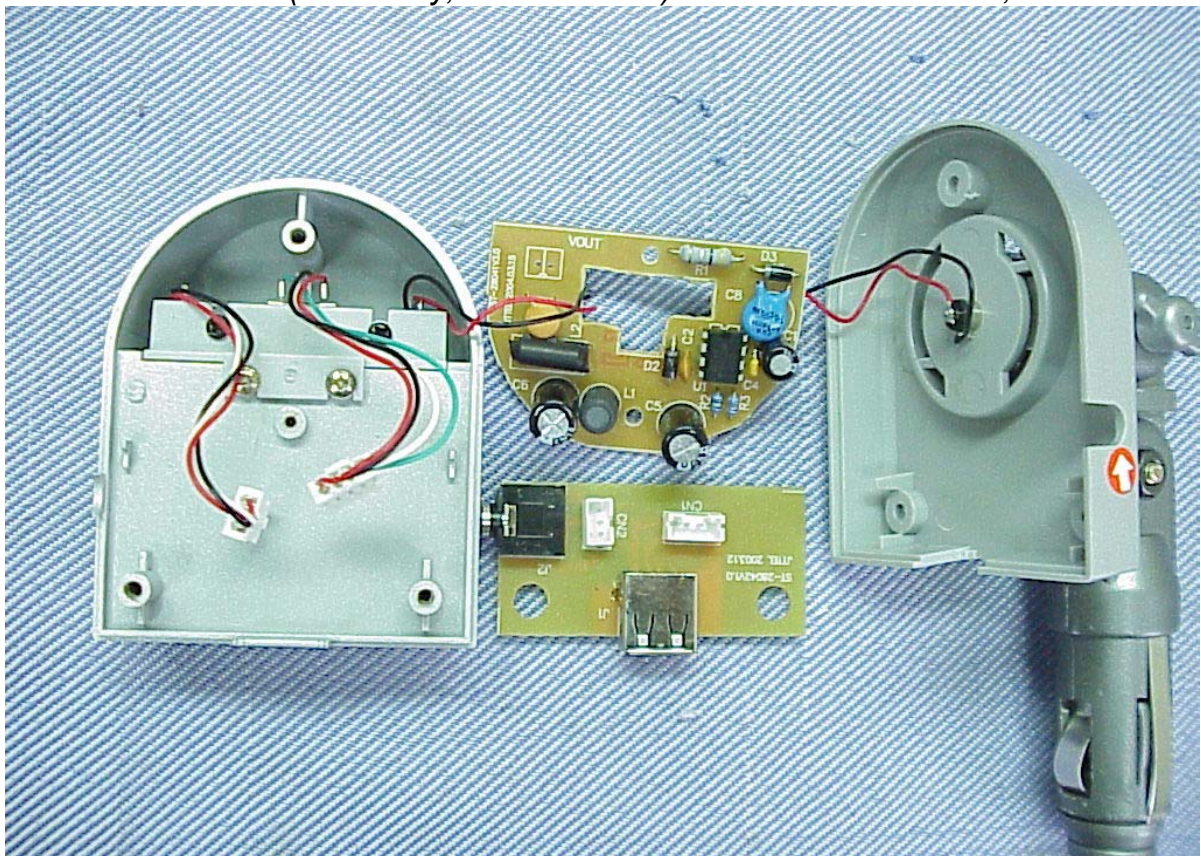
Photos 34
(Accessory, Desktop) Main Board/Front Side



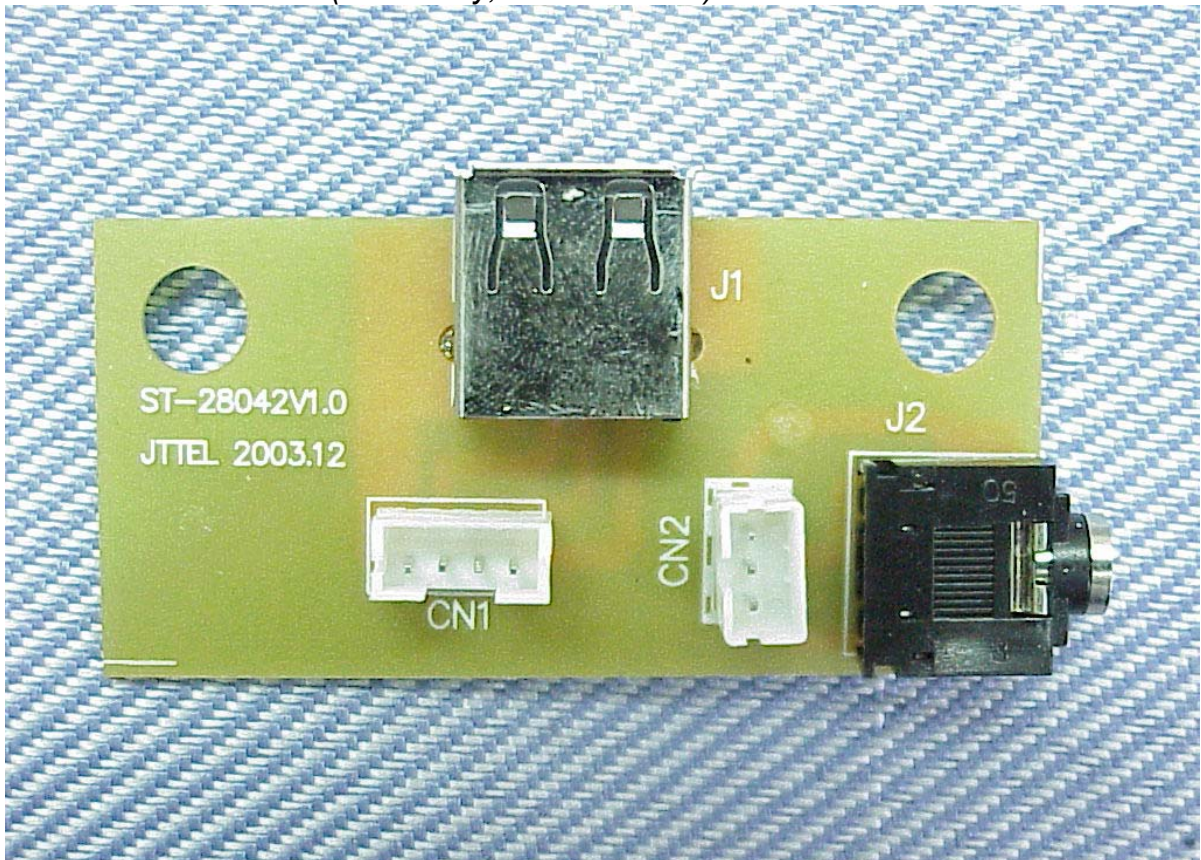
Photos 35
(Accessory, Desktop) Main Board/Back Side



Photos 36
(Accessory, Cradle Holder) Remove Case Covers, Frame of Internal



Photos 37
(Accessory, Cradle Holder) Interface Connector Board/Front Side



Photos 38
(Accessory, Cradle Holder) Interface Connector Board/Back Side

