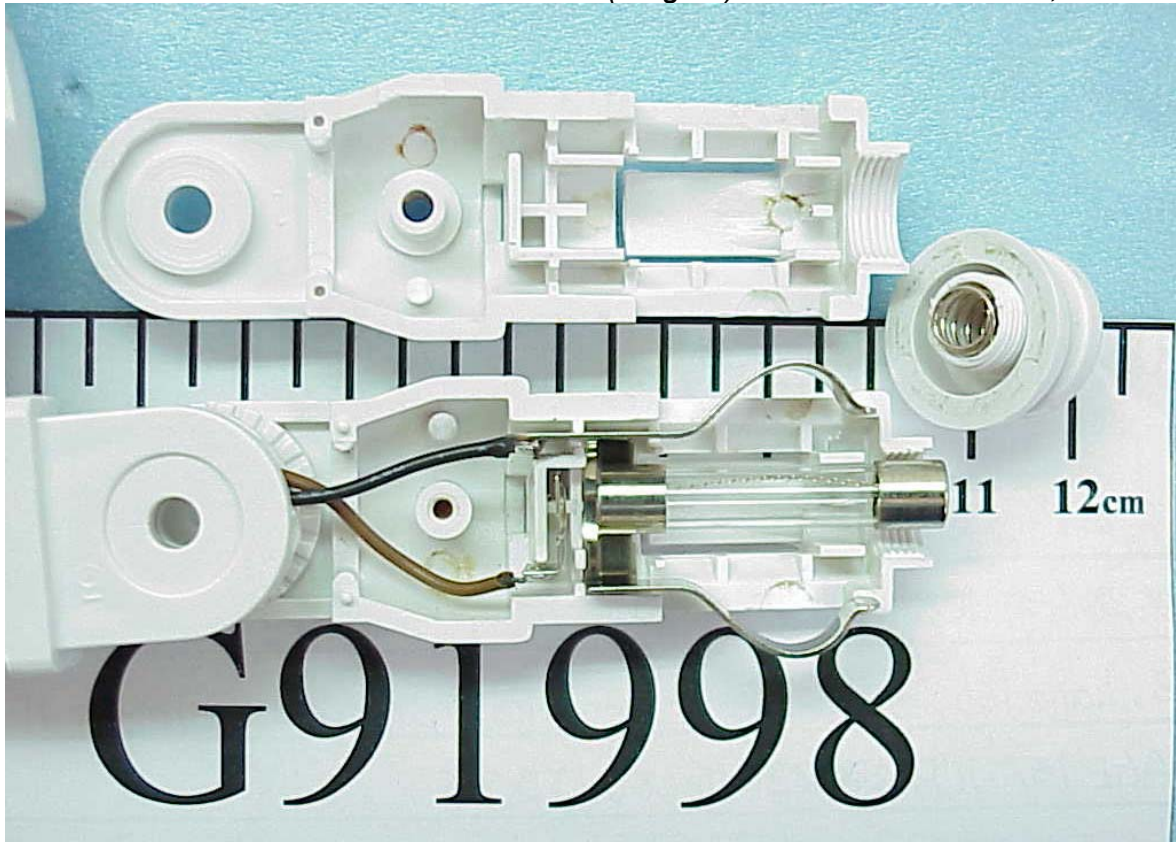
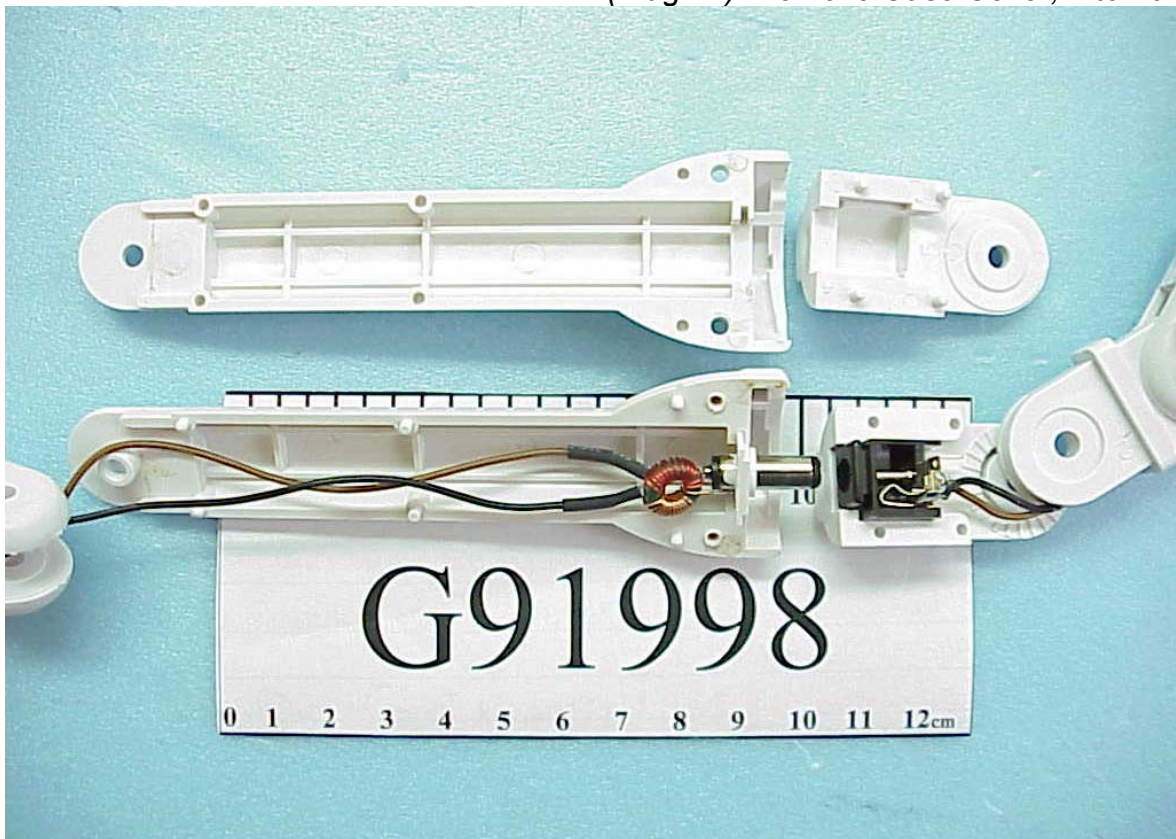


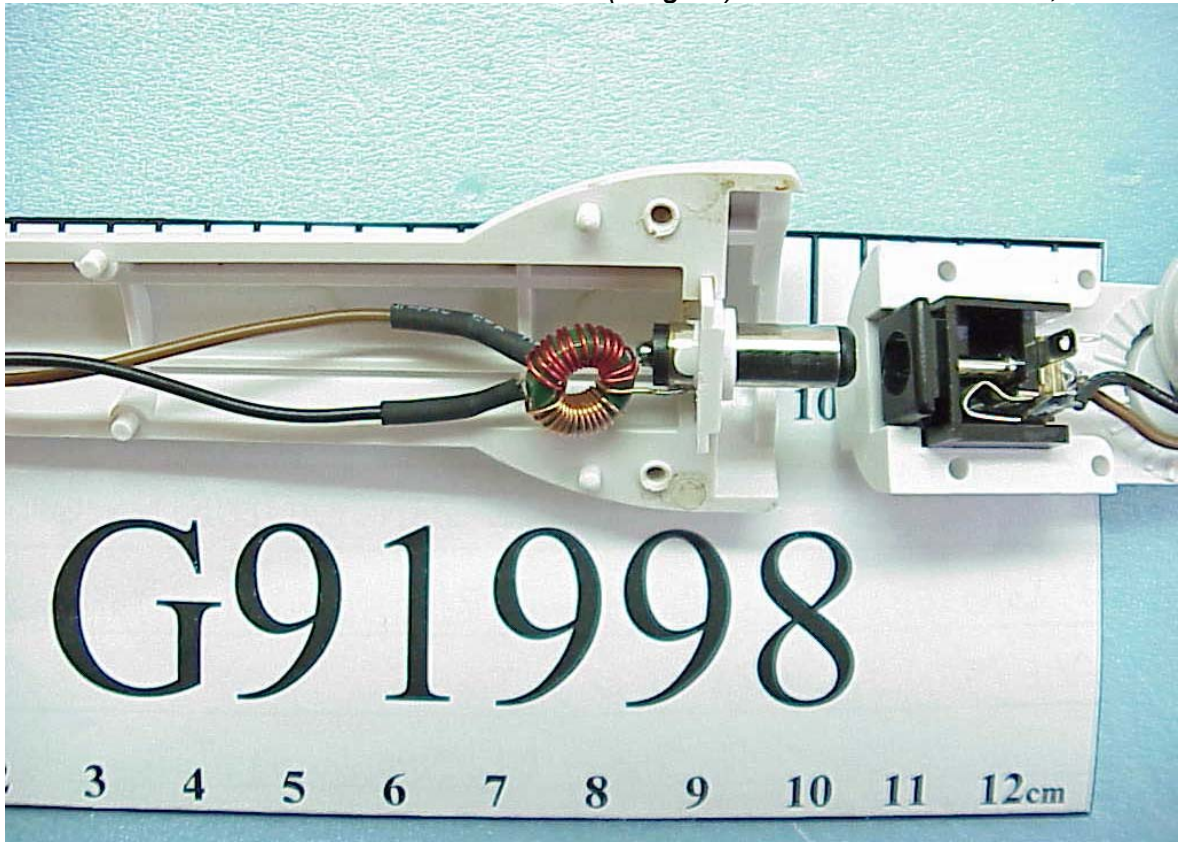
Photos 3
(Plug #1) Remove Case Cover, Internal View



Photos 4
(Plug #1) Remove Case Cover, Internal View



Photos 5
(Plug #1) Remove Case Cover, Internal View



Photos 6
(Plug #1) Appearance View



Photos 7
(Plug #1) Remove Case Cover, Internal View



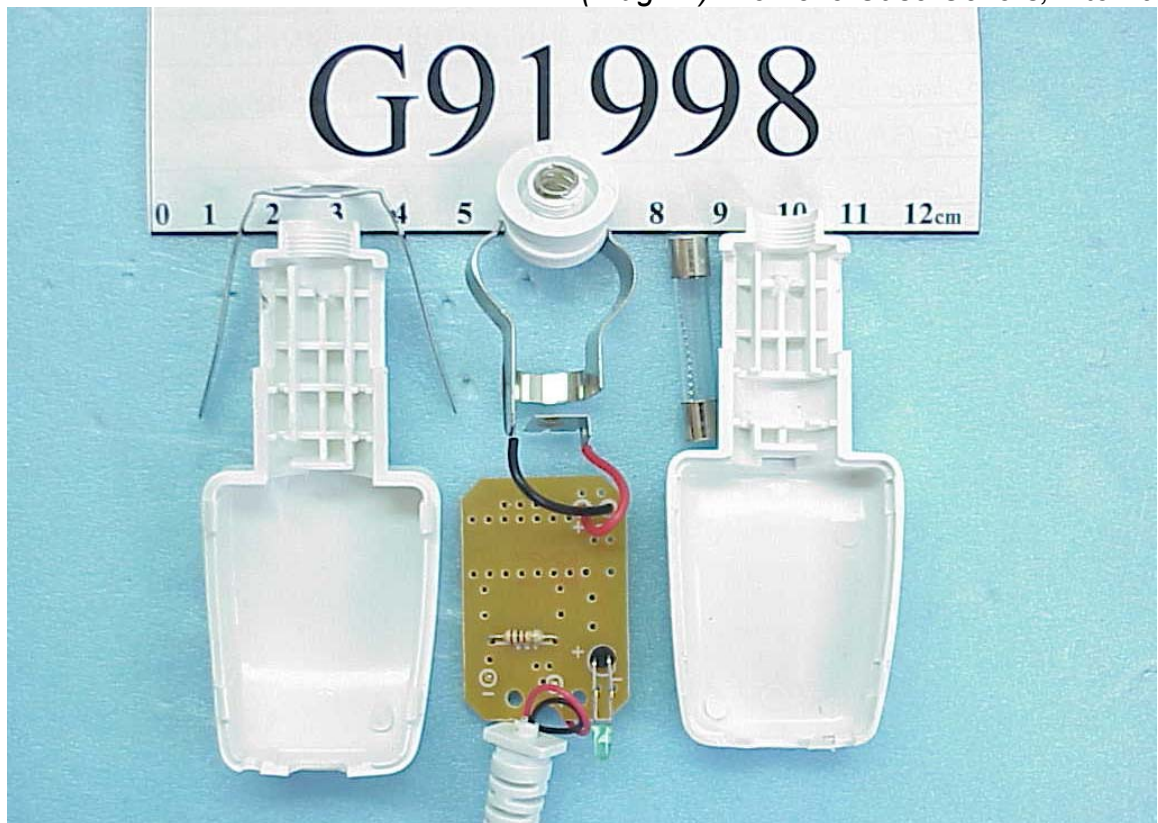
Photos 8
(Plug #2) Appearance View



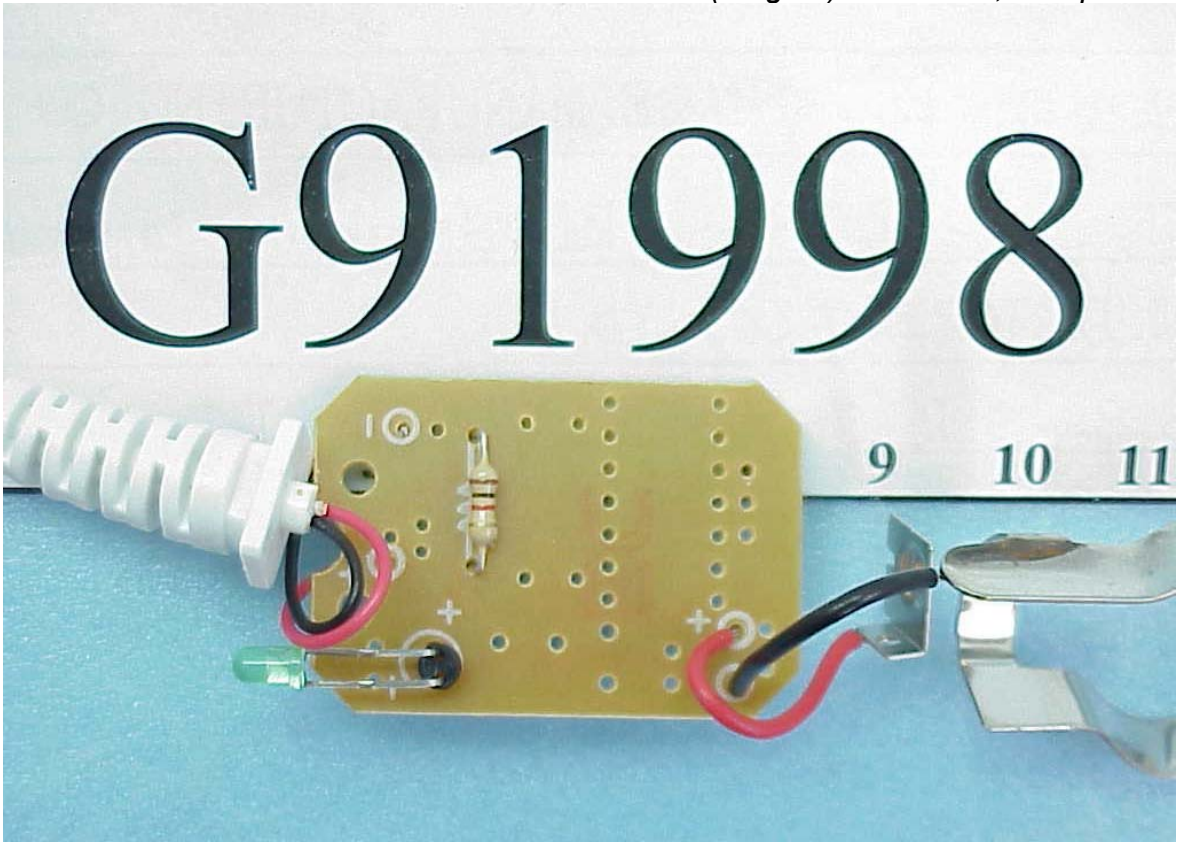
Photos 9
(Plug #2) Appearance View



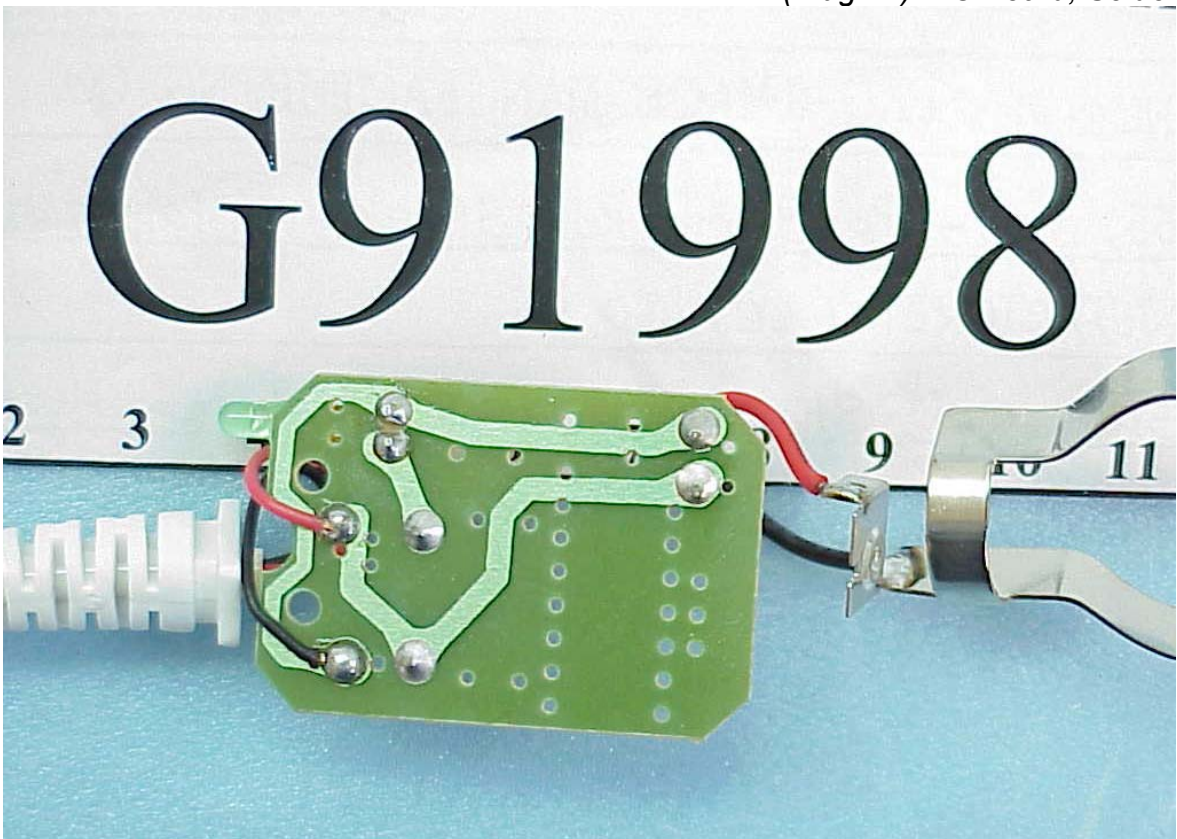
Photos 10
(Plug #2) Remove Case Covers, Internal View



Photos 11
(Plug #2) PC Board, Component Side



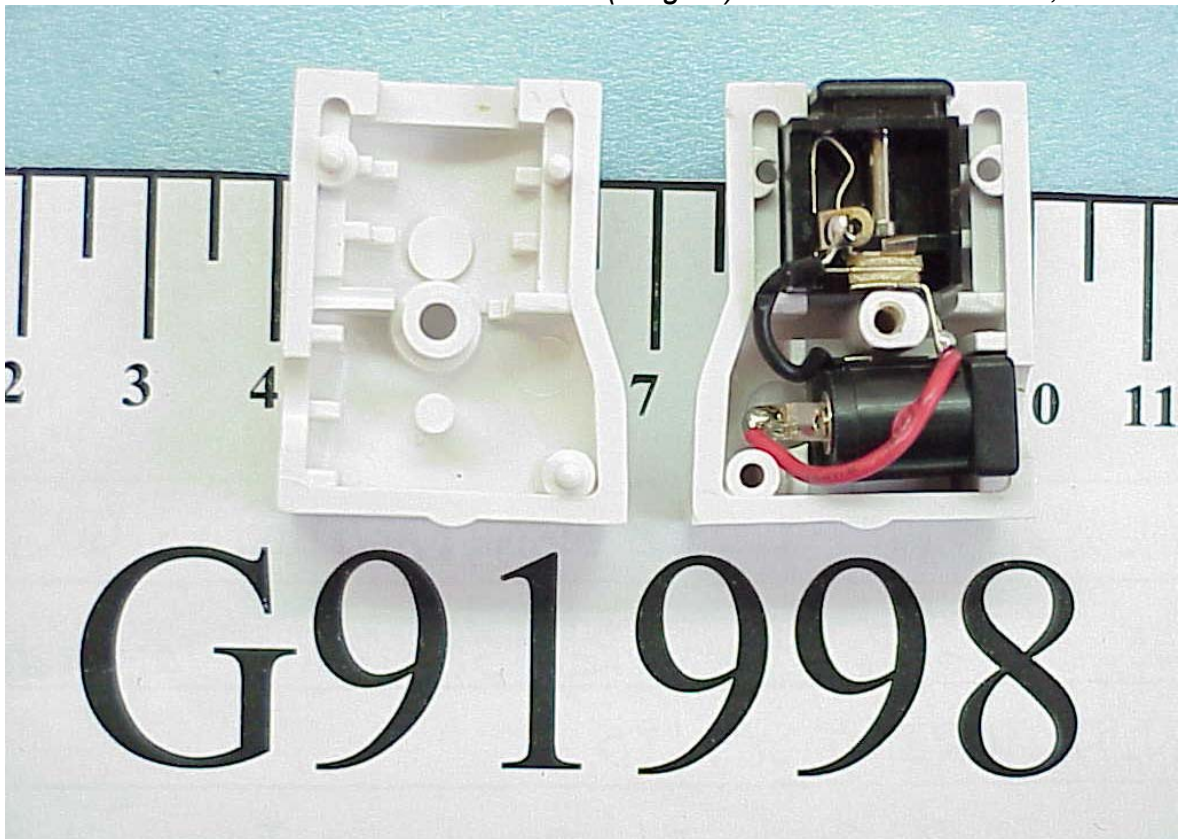
Photos 12
(Plug #2) PC Board, Solder Side



Photos 13
(Plug #2) Appearance View



Photos 14
(Plug #2) Remove Case Cover, Internal View



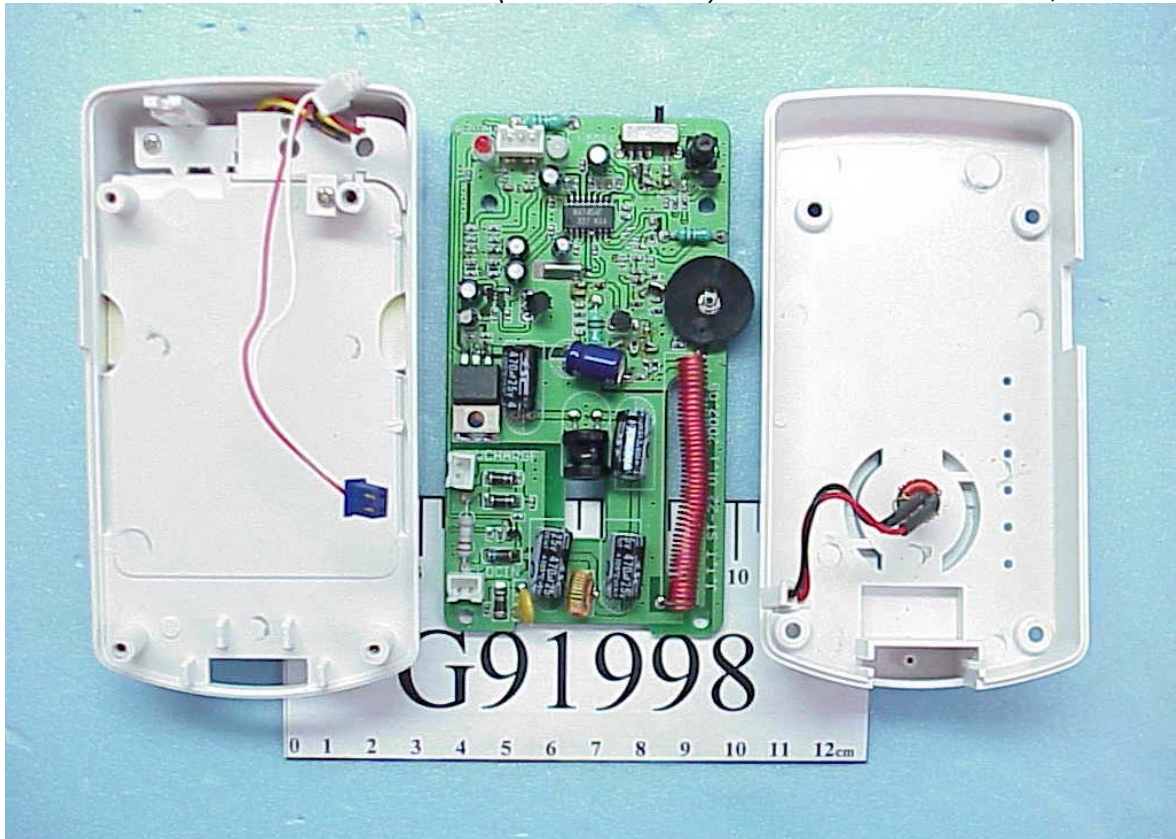
Photos 15
(Holder Station) Appearance View



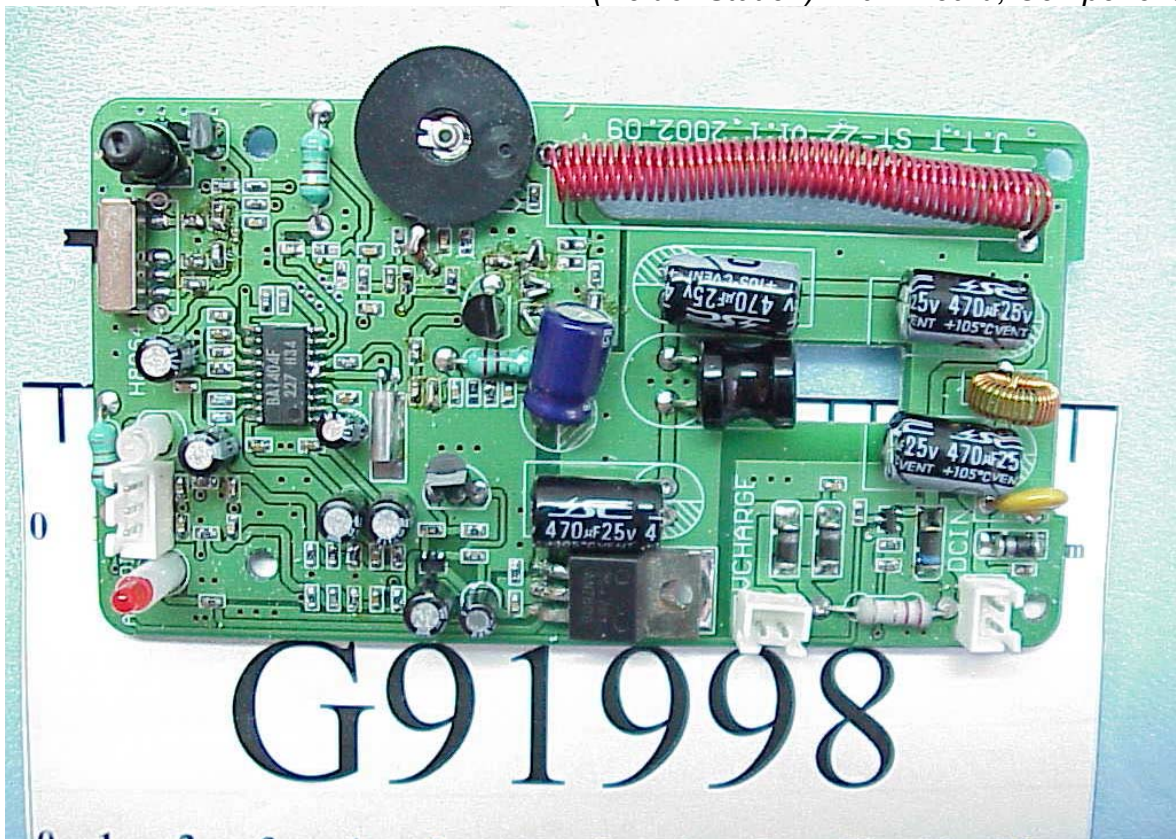
Photos 16
(Holder Station) Appearance View



Photos 17
(Holder Station) Remove Case Covers, Internal View



Photos 18
(Holder Station) Main Board, Component Side



Photos 19
(Holder Station) Main Board, Solder Side

