


History

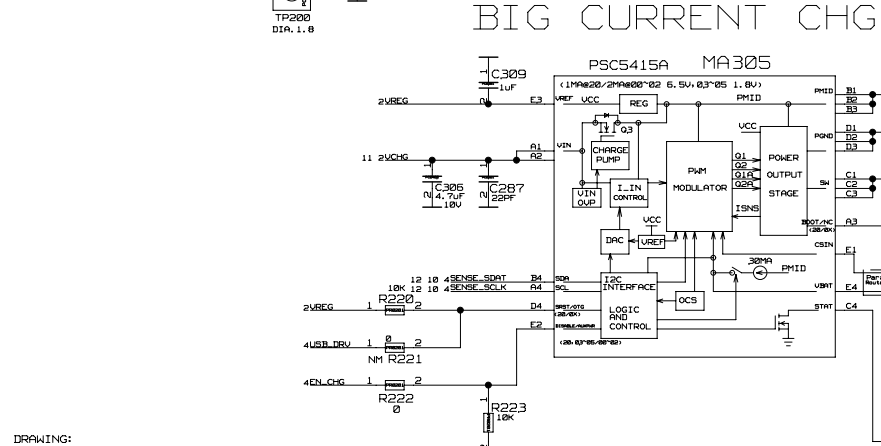
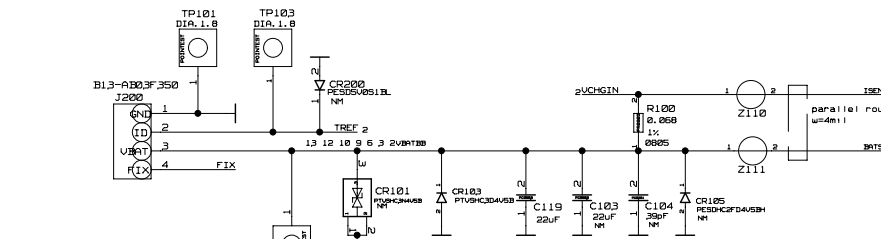
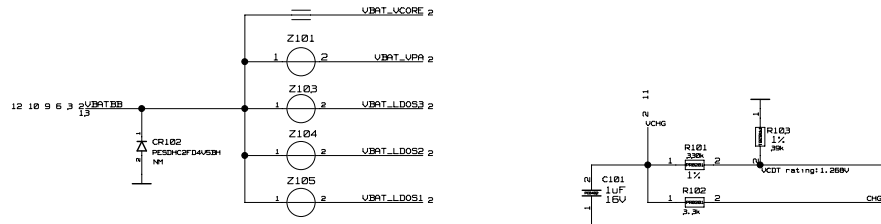
Date	Version	Owner	Description
2018-1-16	V00	Chen Lijun	Base on MP06 V00(MT6578N) Change to MT6580
2018-4-2	V01	Chen Lijun	1.P4:change USB_ID GP108(E25) -> GP108(B16);USB_DRV GP107(F25) -> GP101(C16) ENL_TORCH GP101(C16) -> GP108(E15) ADD U002(E25)+U702B(F25)+ENL_SPM_SubV003)+RESET_SPM(A03) 2.P5:ADD J400 31HG SPM signal! 3.P13:ADD SPM CRD CONTROLLER
2018-4-28	V01A	Chen Lijun	1.P8:Del GPS Crystal
2018-5-25	V01B	Chen Lijun	1.P2:J200 PIN4 and GND are Not Connected Together 2.P4:Add EN_FLASH 3.P8:Flash Driver use RA0641D4N Add C059-R010

DRAWING:
BOARD MP06 P01 V01B
board um06 mm1 v01b
LAST_MODIFIED: Fri Jun 15 11:18:30 2018

ALL RIGHTS RESERVED.REPRODUCTION AND DISCLOSURE PROHIBITED

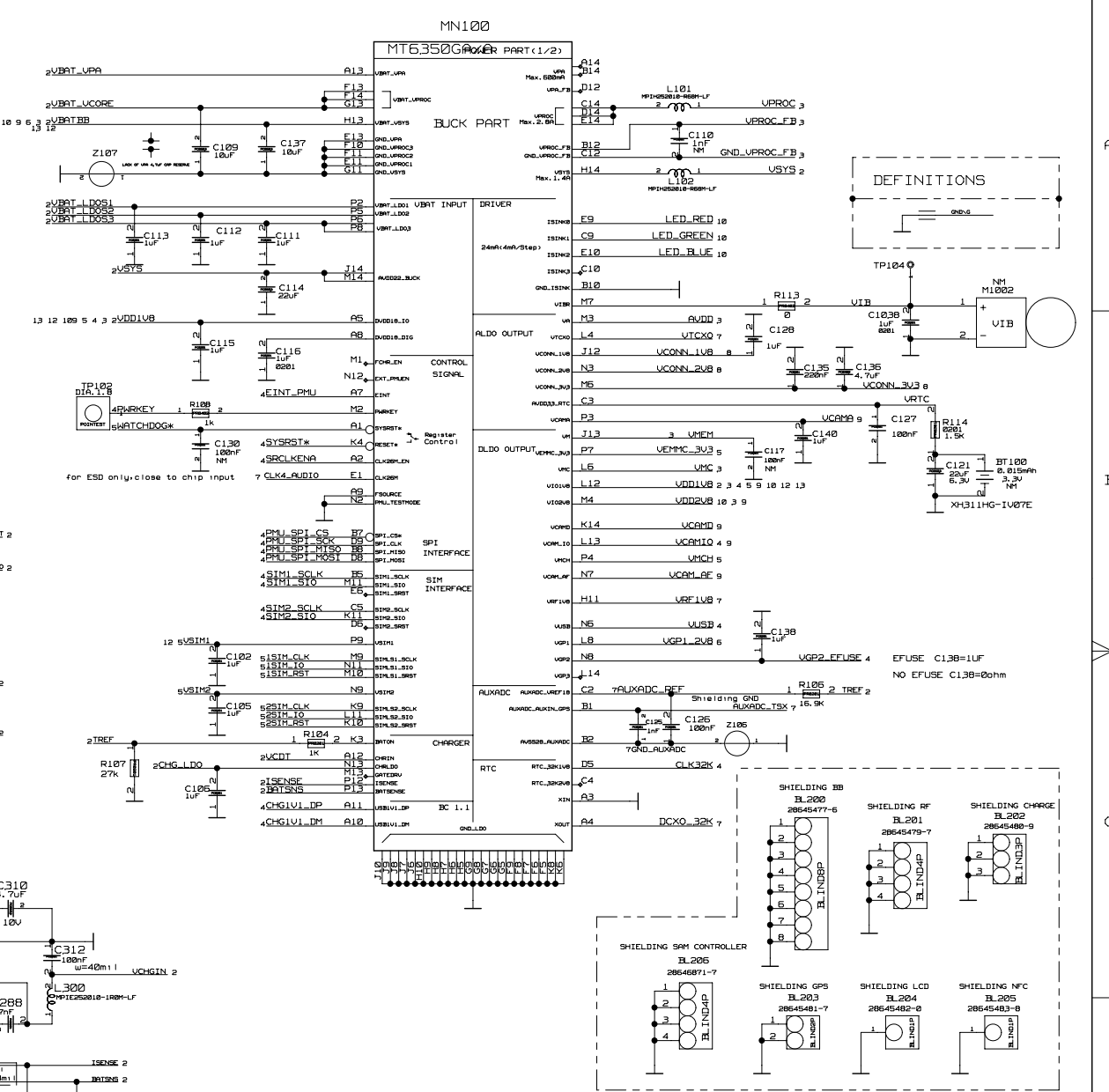
MODIFIED	NAME	DATE	CHECKED	NAME	DATE
-	SCHEMATIC	18/9/2018	-	SCHEMATIC	18/9/2018
TITLE		HISTORY			
Product Name		SCHEMATIC BOARD um06.mm1_v01b			
P. N.		FORMAT	PAGE/SHEET		
-		A2	1 / 16		
VER.	DATE	DOCUMENT NUMBER	TYPE	PART	VERS.
-	-	-	-	-	-

	Symbol	Vout (V)	Iout (mA)	On/Off control	Description
Buck	UCORE	0.7-1.4	2800	Always On	Digital CORE
	USYS	2.2	1400	Always On	3.3V PM
	UVA	0.5-3.4	600	1. Register (default) 2. SRCLKEN	3.3V PM
LDO	UVA	1.24v/1.39v/1.54v/1.64	700-600/500/300		External Memory
	UI01UB	1.8V	300		Digital IO
	UAF1UB	1.825V	200		3G power amplifier
	UGP3	1.2v/1.3v/1.5v/1.8V	200		General purpose LDO3
	UCAM0	1.2v/1.3v/1.5v/1.8V	150		Digital power for camera module
	UCONN1UB	1.8V	120		Digital power for camera IO
Analog	UA	2.8V	150		Analog baseband
	UTCX0 **	2.2V	20 **		13.26MHz reference clock
	UCONN2B	2.8V	30		HiFi/BT/FM/GPS power
Digital	UCCNH3 **	3.3/3.4, 4.3/5.3, 6V	350 **		HiFi/BT/FM/GPS power
	VENMC_3V3	3.0/3.3v	400		3.3V EMCC
	UMCH	3.0/3.3v	400		SD 2.0/3.0 memory card
	UUSB	3.3	20		USB
	UI02B	2.8	200		Digital IO
	UMC	1.8/3.3v	100		SD 3.0 memory card
	USIM1	1.8v/3.0V	50		1st SIM Card
	USIM2	1.8v/3.0V	50		2nd SIM Card
	VDIG1B	1.8	20		Digital power
	UCAM_LAF	1.2/1.3/1.5/1.8/2.0/2.8/3.0/3.3	100		Digital power for camera Auto Focus
	UGP1 **	1.2/1.3/1.5/1.8/2.0/2.8/3.0/3.3	100 **		General purpose LDO1
	UGP2	1.2/1.3/1.5/1.8/2.0/2.8/3.0/3.3	100		General purpose LDO2
	UIVR	1.2v/1.3v/1.5v/1.8v/2.0v/2.8v/3.0v/3.3v	100		Vibrator
RTC	URTC	2.8V	2		Real-time Clock



DRAWING:
BOARD W06 PM1 V01B
board w06 mm1 v01b
LAST_MODIFIED=Tue Jun 26 10:36:47 2018

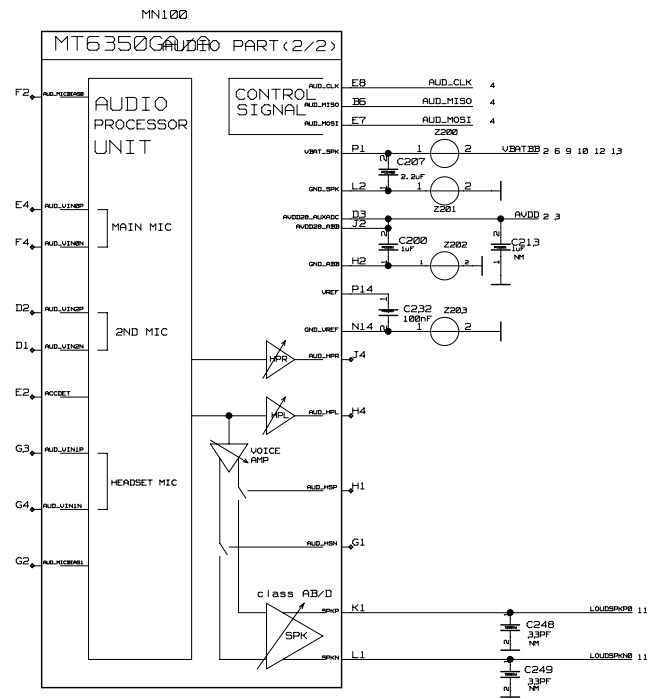
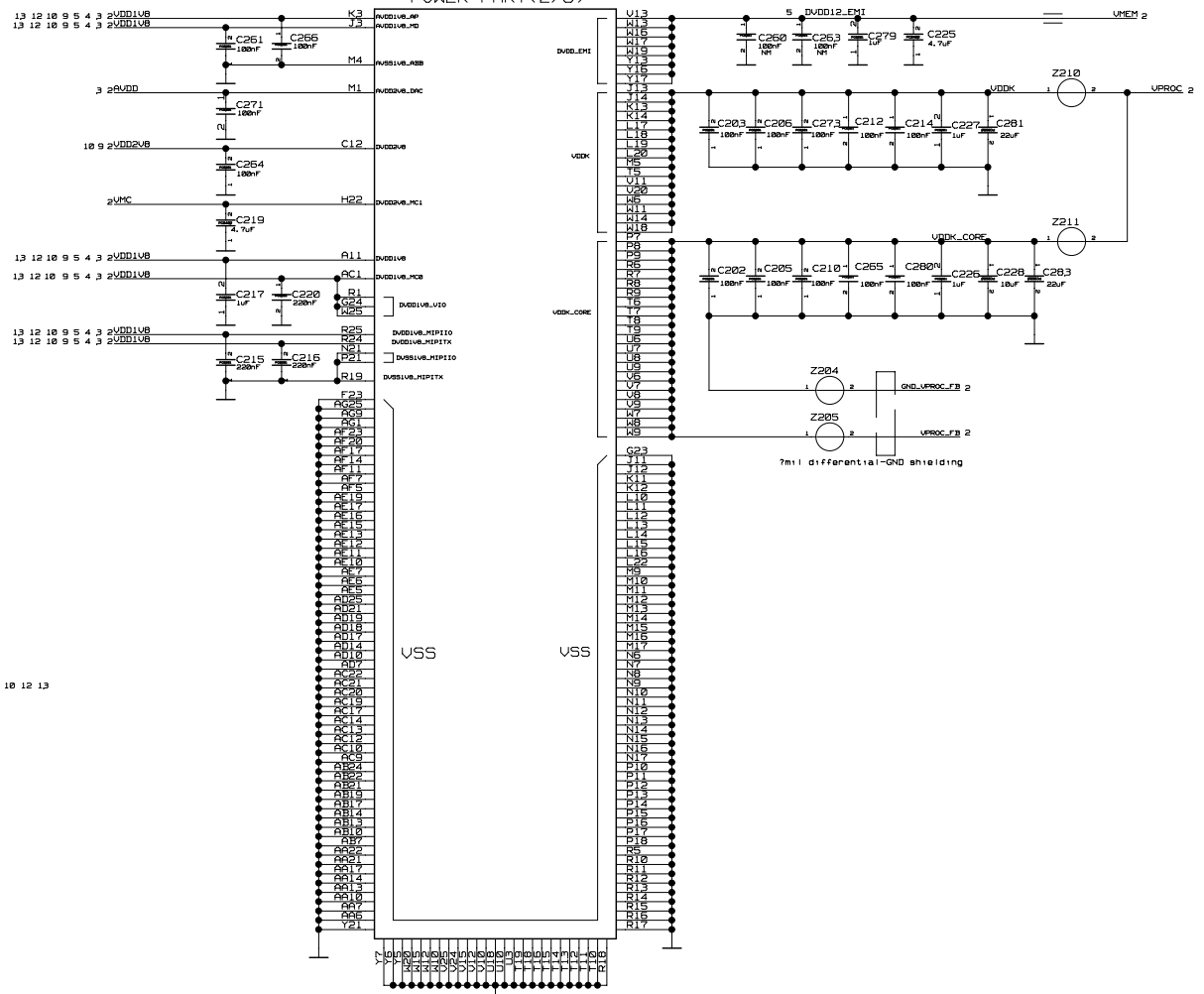
ALL RIGHTS RESERVED. REPRODUCTION AND DISCLOSURE PROHIBITED



MODIFIED	NAME	DATE	CHECKED	NAME	DATE
-	SCHEMATIC	18/9/2018		SCHEMATIC	18/9/2018

TITLE		MT6350			
Product Name		SCHEMATIC BOARD w06_mm1_v01b			
P. N.		FORMAT		PAGE/SHEET	
		A2		2 / 16	
DOCUMENT NUMBER		TYPE		PART	
VER.		DATE		VER.	

MT6580A/WM_N
POWER PART (2/6)



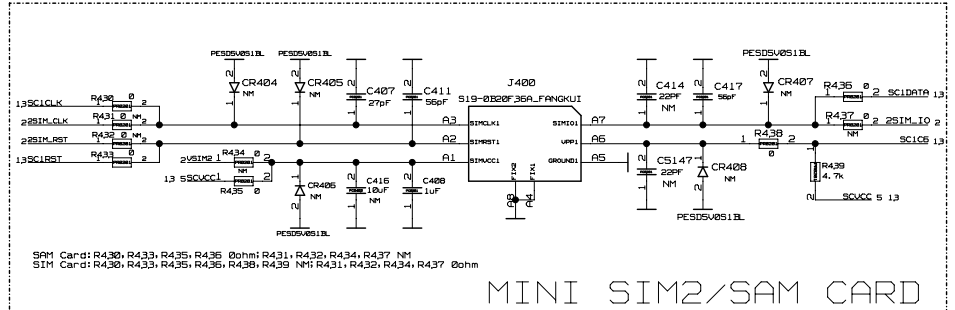
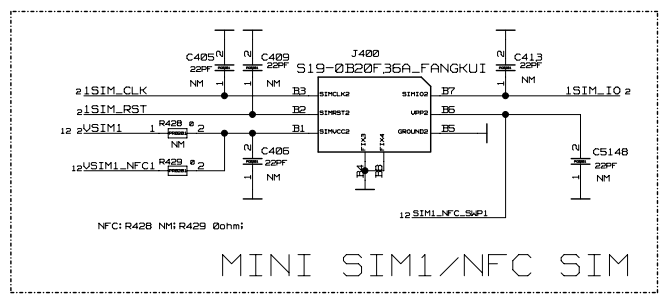
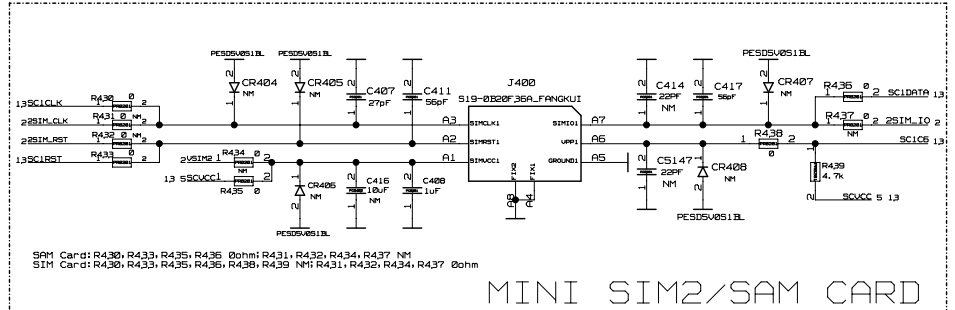
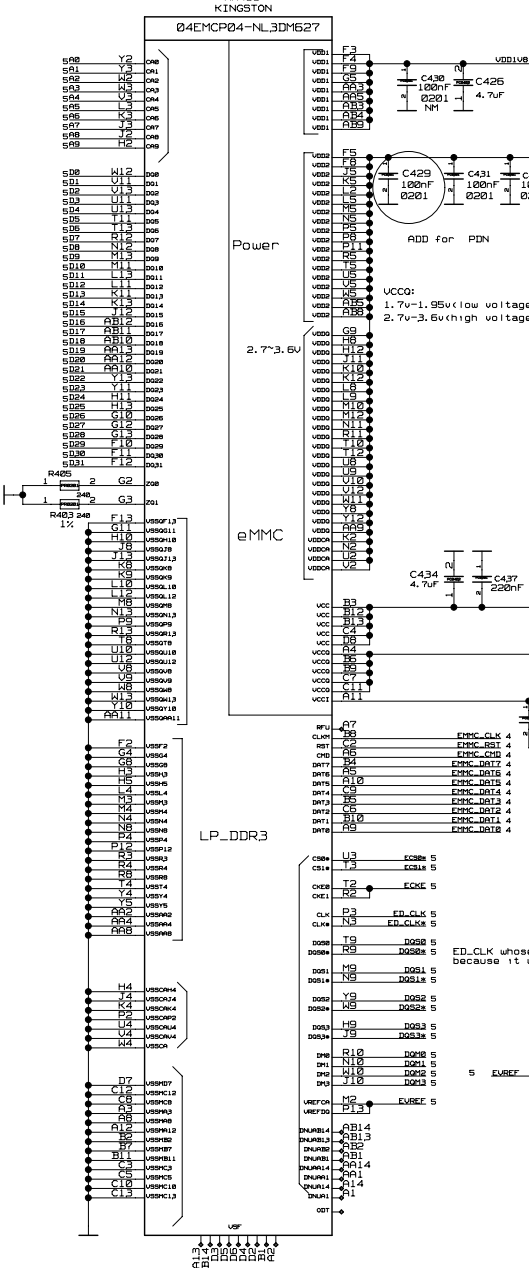
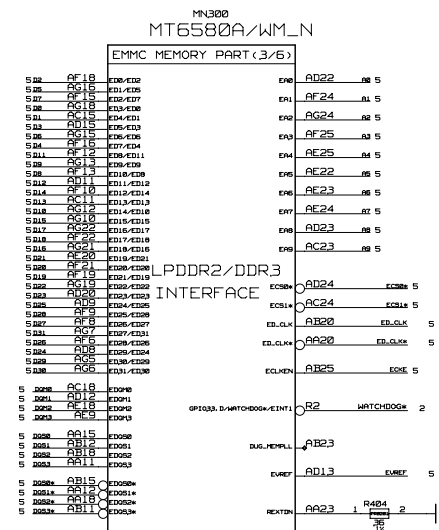
DRAWING:
BOARD W#06 MM1 V01B
BOARD W#05 MM1 V01B
LAST_MODIFIED=Thu Jun 26 10:36:47 2018

ALL RIGHTS RESERVED. REPRODUCTION AND DISCLOSURE PROHIBITED

MODIFIED	NAME	DATE	CHECKED	NAME	DATE
-	SCHEMATIC	18/9/2018	-	SCHEMATIC	18/9/2018
TITLE: MT6580 Product Name: SCHEMATIC BOARD wm06.mm1_v01b					
P. N. _____ FORMAT: A2 DOCUMENT NUMBER: _____ TYPE: _____ PART: _____ VERS.: _____					
PAGE/SHEET: 3 / 16 SCH DRAWING A2					

EMMC+LPDDR3<221 BALL>

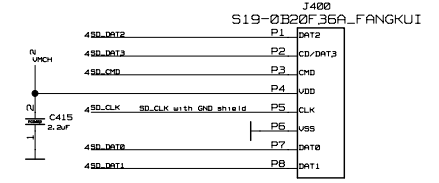
KINGSTON 04EMCP04-NL3DM627 4GB+4GB (1.0V) FBGA221-11.5X13X1.0-0.5
KINGSTON 08EMCP04-NL3DT227 8GB+4GB (1.0V) FBGA221-11.5X13X1.0-0.5
KINGSTON 08EMCP08-NL3DT227 8GB+8GB (1.0V) FBGA221-11.5X13X1.0-0.5
SAMSUNG HMFB0012H=H214 8GB+8GB (1.0V) FBGA221-11.5X13X1.0-0.5



MINI SIM1/NFC SIM

MINI SIM2/SAM CARD

T-FLASH SD3.0<SRD50/DDR50> 400mA



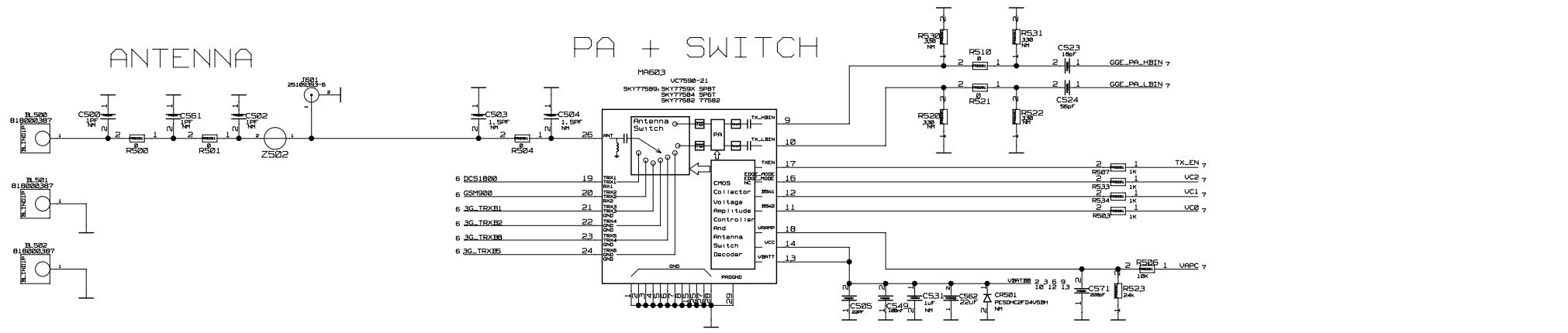
DRAWING: BOARD UM06 MM1 U01B board um06 mm1 u01b LAST_MODIFIED:Tue Jun 26 10:36:48 2018

ALL RIGHTS RESERVED.REPRODUCTION AND DISCLOSURE PROHIBITED

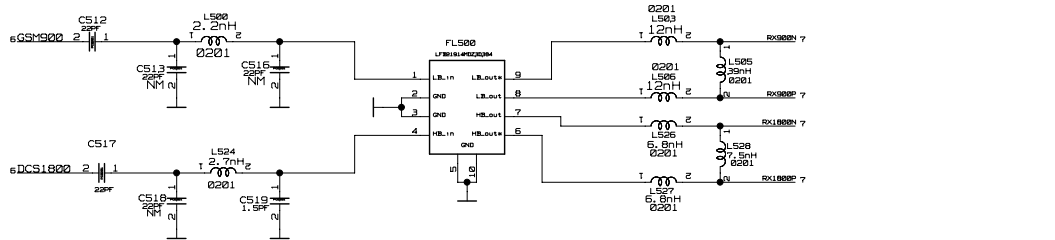
Table with columns: MODIFIED, NAME, DATE, CHECKED, NAME, DATE. Includes a revision table and a title block with SageReal logo and page information.

ANTENNA

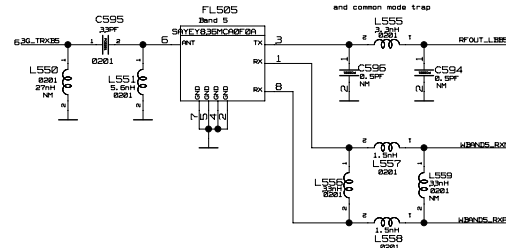
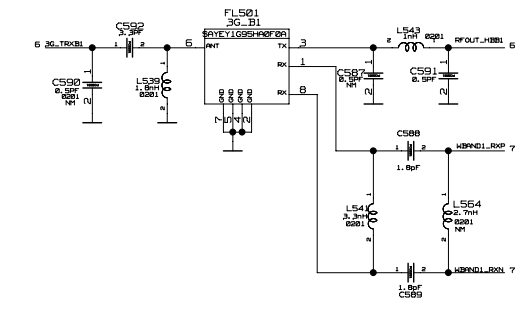
PA + SWITCH



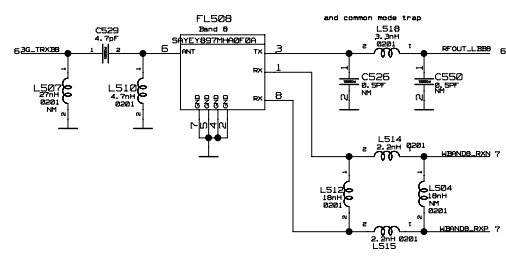
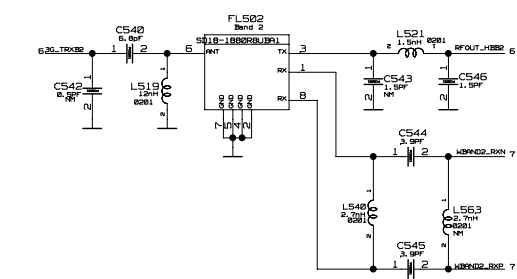
B



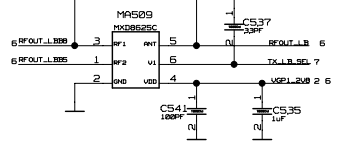
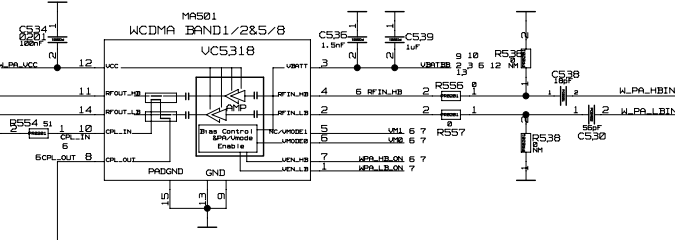
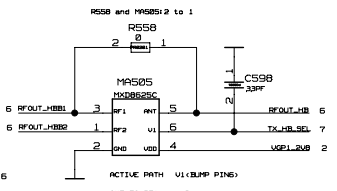
C



D



Total capacitor value on VPA
Don't exceed 4.0uF
M_PA_VCC 5

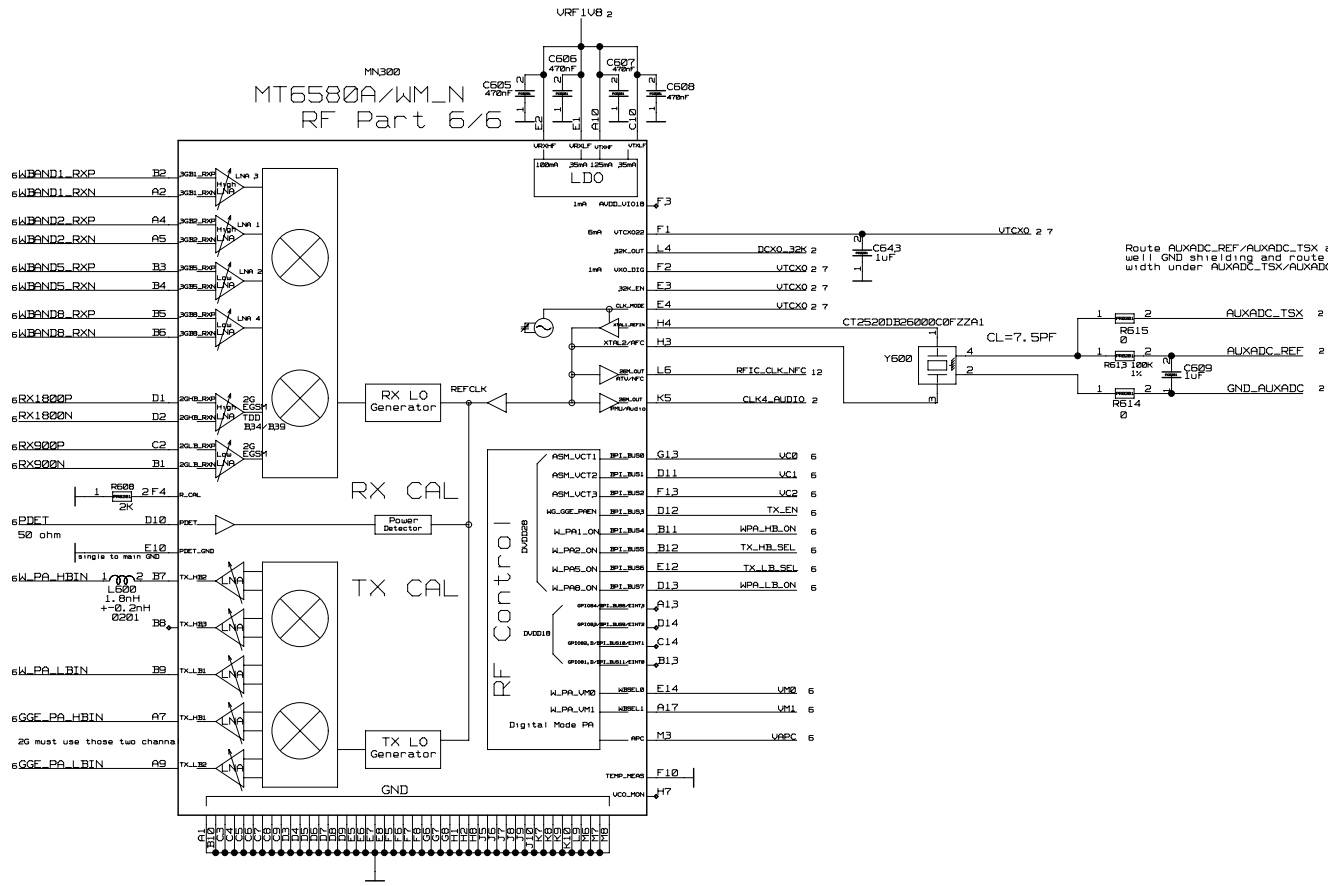


DRAWING:
BOARD WPM6 MM1 V01B
board um06 mm1 v01b
LAST_MODIFIED=Tue Jun 26 10:36:48 2018

ALL RIGHTS RESERVED. REPRODUCTION AND DISCLOSURE PROHIBITED

MODIFIED	NAME	DATE	CHECKED	NAME	DATE
-	SCHEMATIC	18/9/2018	-	SCHEMATIC	18/9/2018
TITLE: WCDMA+EDGE_RF Product Name: SCHEMATIC BOARD um06_mm1_v01b					
P. N.				FORMAT	DATE
SageReal				A2	
VER.	DATE	DOCUMENT NUMBER	TYPE	PART	VER.
-	-	-	-	-	-
PAGE/SHEET				6 / 15	
SCH DRAWING A2					

MT6580A/WM_N
RF Part 6/6



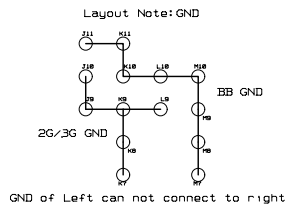
Route AUXADC_REF/AUXADC_TSX as differential trace with well GND shielding and route AUXADC_GND with 15mil trace width under AUXADC_TSX/AUXADC_REF trace to provide return current path

1. Keep the crystal >10 mm and <30 mm away from the heat sources (Priority: 2/3G PA's, charger, and PMIC).
2. Keep-out at least first three inner layers of metal for all TMS circuits.
3. Keep the TMS >4 mm from MT6580 Co-TMS.
4. Keep-out all TMS circuits >0.5 mm away from the surrounding metal.
5. Do not place the TMS directly under the heat sources that on the opposite side (i.e. CPU and PA's).
6. Keep all TMS routing away from high-speed and power traces.

Tx Output Port Mapping

Tx Port Name	GS4950/900	FDD E5/E6/E8	Notes
TX_3GLB	✓	✓	3G Path Only
TX_2GLB	✓	✓	2G Path Only or 3G Path Only or MultiMode Path

Tx Port Name	GS41800/1800	FDD B1/B2/B3/B4 TDD B34/B39/B40	Notes
TX_3GHB1	✓	✓	3G FDD Path or 3G TDD Path
TX_3GHB2	✓	✓	3G FDD Path or 3G TDD Path
TX_2GHB	✓	✓	2G Path Only or 3G Path Only or MultiMode Path

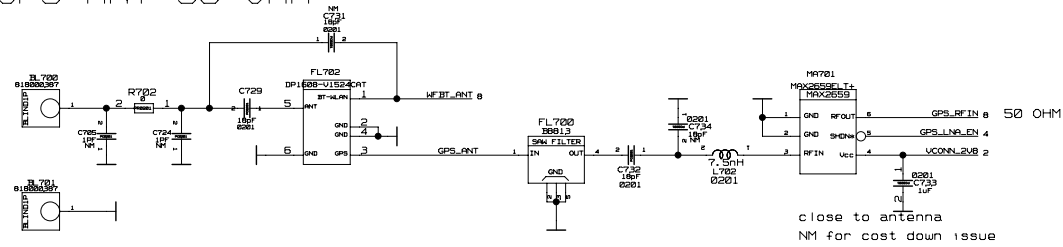


DRAWING:
BOARD WM6 MM1 v01B
BOARD WM6 mm1 v01B
LAST_MODIFIED=Tue Jun 26 10:35:48 2018

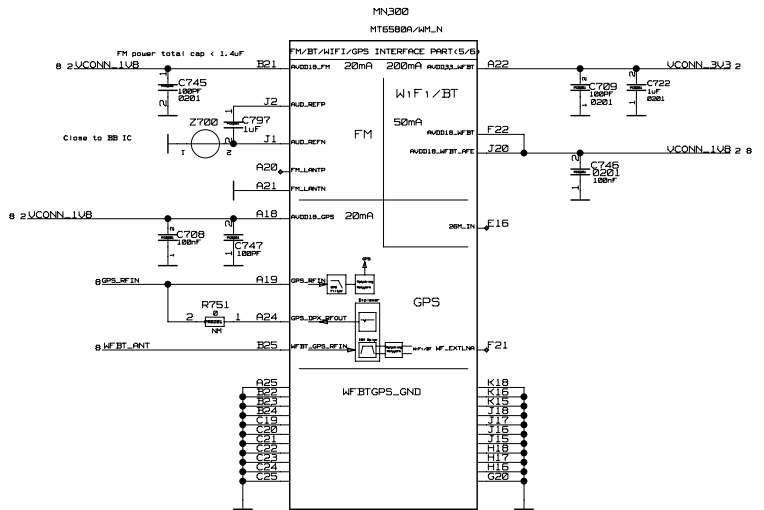
ALL RIGHTS RESERVED. REPRODUCTION AND DISCLOSURE PROHIBITED

MODIFIED	NAME	DATE	CHECKED	NAME	DATE
-	SCHEMATIC	18/9/2018	-	SCHEMATIC	18/9/2018
TITLE: MT6580					
Product Name: SCHEMATIC BOARD um05_mmi_v01b					
PAGE/SHEET: 7/16					
P. N.:					
FORMAT: A2					
VER.	DATE	DOCUMENT NUMBER	TYPE	PART	VERS.

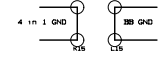
WFBTGPS ANT 50 OHM



close to antenna
NM for cost down issue



Layout Note: GND



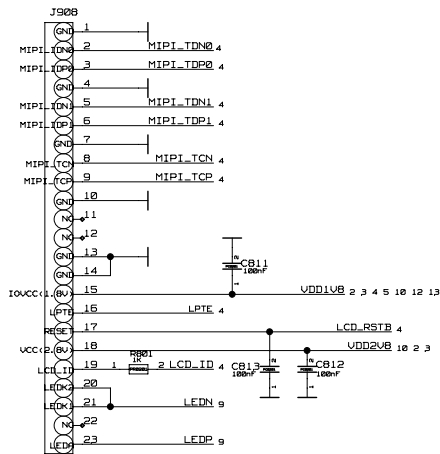
K15,K16 can not connect to L16,L15

DRAWING:
BOARD W1F1/BT/GPS/FM V01B
BOARD W1F1/BT/GPS/FM V01B
LAST_MODIFIED: Tue Jun 26 18:36:48 2018

ALL RIGHTS RESERVED. REPRODUCTION AND DISCLOSURE PROHIBITED

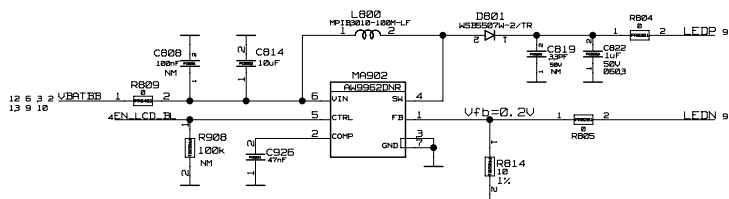
MODIFIED	NAME	DATE	CHECKED	NAME	DATE
-	SCHEMATIC	18/9/2018	-	SCHEMATIC	18/9/2018
TITLE: MT6580 (W1F1/BT/GPS/FM)					
Product Name: SCHEMATIC BOARD um06.mm1_v01b					
PAGE/SHEET: 8 / 16					
P. N. _____					
FORMAT: A2					
VER.	DATE	DOCUMENT NUMBER	TYPE	PART	VERS.
-	-	-	-	-	-

3.97 TFT
 Display Format:WUGA 480x800
 IC : JD9161BA



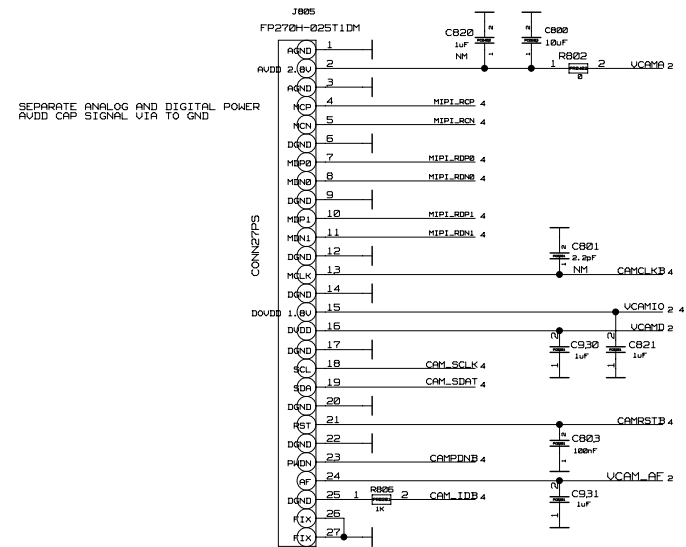
Same as VP402

LCD White LED driver

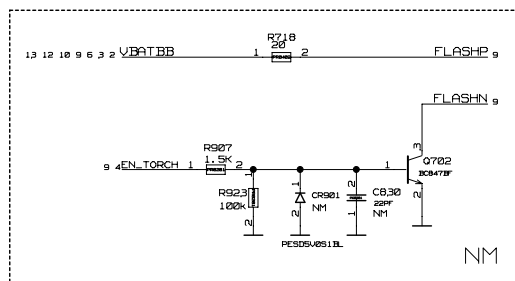
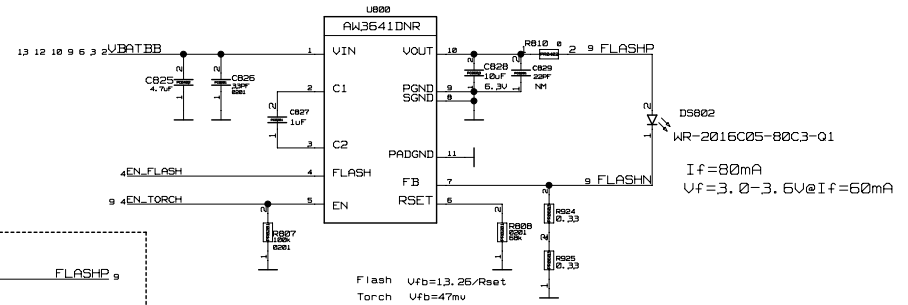


$I_{led} = V_{fb} / R_{814}$
 8x1 serial LED
 $I_f = 20mA, V_f = 2.3. 2V \sim 26. 4V$

5M Camera GC5025



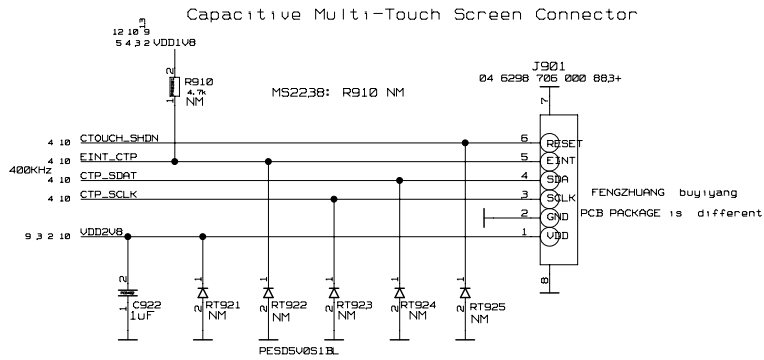
FLASH DRIVER



DRAWING:
 BOARD W005 M01 V01B
 board W005 M01 V01B
 LAST_MODIFIED=Tue Jun 26 10:36:47 2018

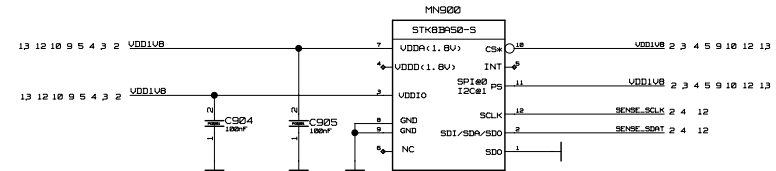
ALL RIGHTS RESERVED.REPRODUCTION AND DISCLOSURE PROHIBITED

MODIFIED	NAME	DATE	CHECKED	NAME	DATE
-	SCHEMATIC	18/9/2018	-	SCHEMATIC	18/9/2018
TITLE		LCD&CAMERA		SageReal	
Product Name		SCHEMATIC BOARD W005_M01_V01B		PAGE/SHEET 9/16	
P. N.		FORMAT A2		DOCUMENT NUMBER	
VER. DATE		TYPE		PART	
				VER.	



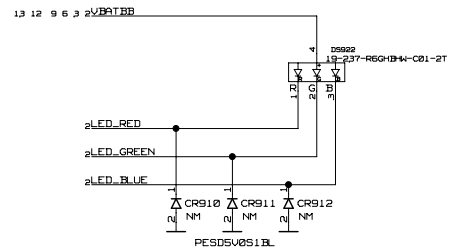
- TP900 ○ CTOUCH_SHDN 4 10
- TP901 ○ EINT_CTP 4 10
- TP902 ○ CTP_SDAT 4 10
- TP903 ○ CTP_SCLK 4 10
- TP904 ○ VDD2V8 2 3 9 10
- TP905 ○ FLY

3D G SENSOR



In I2C mode, CS* sets the I2C address:
 MC3415-P I2C address: WR=0X9B, RD=0X99, UPP=GND
 STKBBA50-S I2C address: WR=0X30, RD=0X31, UPP=VDD

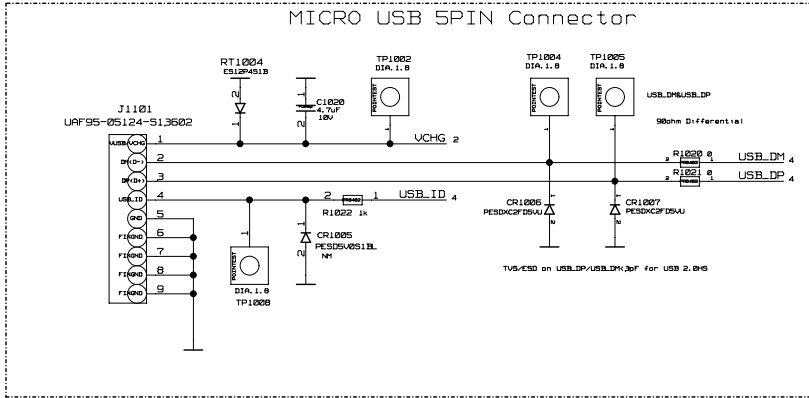
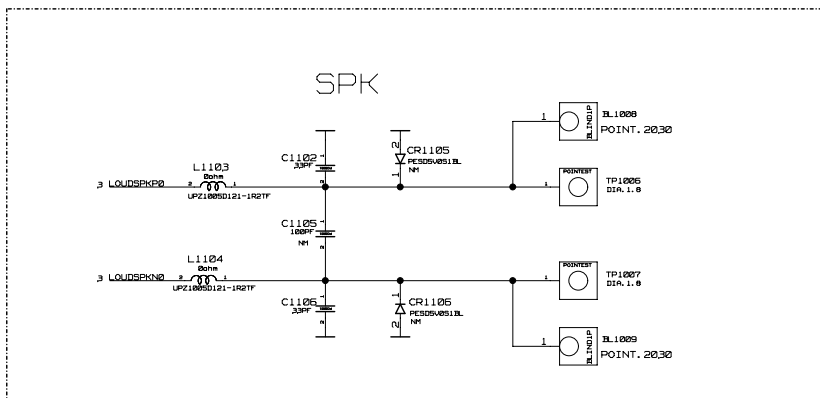
STATUS LED



DRAWING:
 BOARD W026 M01 V01B
 board w026 mm v01b
 LAST_MODIFIED=Tue Jun 26 10:36:48 2018

ALL RIGHTS RESERVED. REPRODUCTION AND DISCLOSURE PROHIBITED

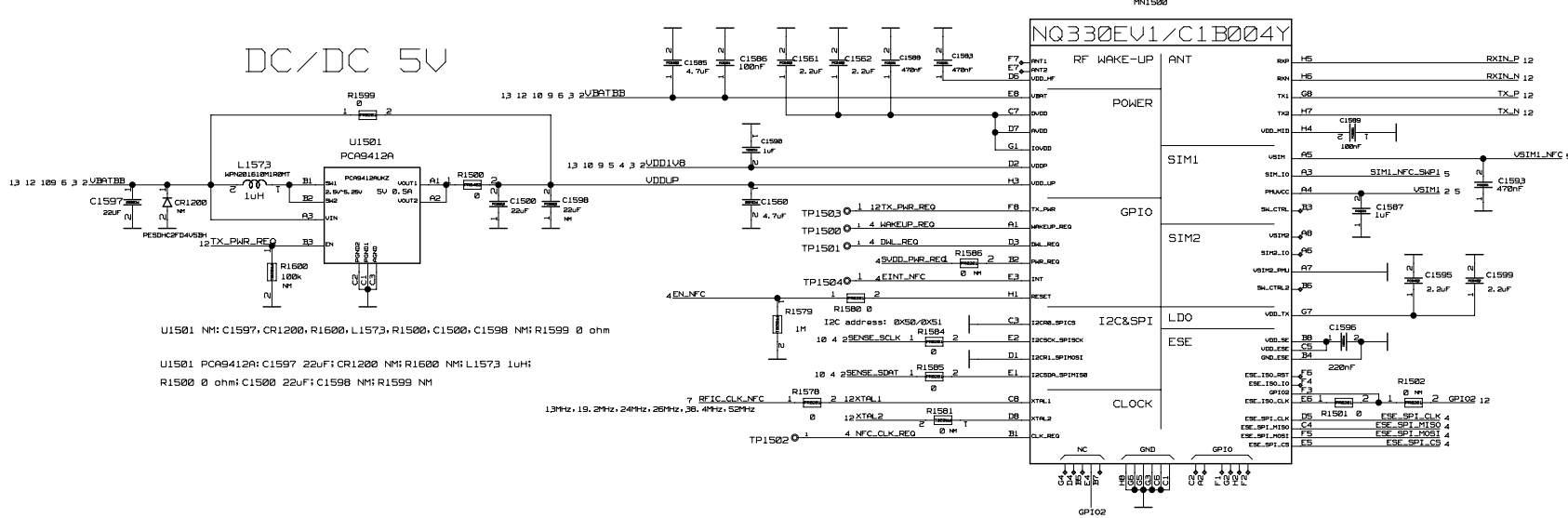
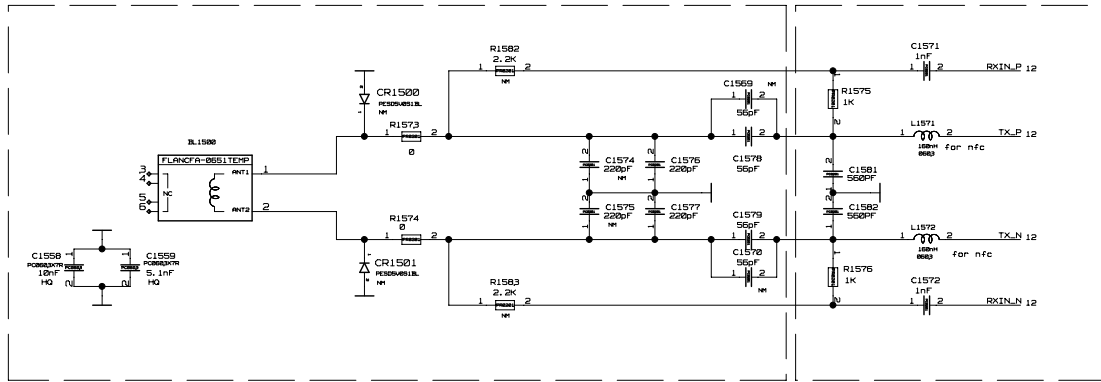
MODIFIED	NAME	DATE	CHECKED	NAME	DATE
-	SCHEMATIC	18/9/2018	-	SCHEMATIC	18/9/2018
TITLE					SageReal 伊路雷
SENSOR&CAPACITIVE MULTI TOUCH					
Product Name					PAGE/SHEET
SCHEMATIC BOARD w026.mm v01b					
P. N.					FORMAT A2
SageReal 伊路雷					
VER.	DATE	DOCUMENT NUMBER	TYPE	PART	VERS.
-	-	-	-	-	-



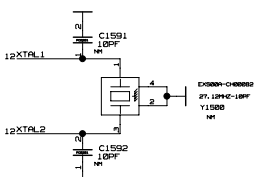
DRAWING:
 BOARD W026 MM1 V01B
 board um06 mm1 v01b
 LAST_MODIFIED=Tue Jun 26 10:36:47 2018

ALL RIGHTS RESERVED.REPRODUCTION AND DISCLOSURE PROHIBITED

MODIFIED	NAME	DATE	CHECKED	NAME	DATE
-	SCHEMATIC	18/9/2018	-	SCHEMATIC	18/9/2018
TITLE					
AUDIO&CONNECTOR					
Product Name					
SCHEMATIC BOARD um06.mm1_v01b					
P. N.					
SageReal					
FORMAT SIZE				PAGE/SHEET	
A2				11 / 16	
VER.	DATE	DOCUMENT NUMBER	TYPE	PART	VER.
-	-	-	-	-	-



U1501 NM: C1597, CR1200, R1600, L1573, R1500, C1500, C1598 NM: R1599 0 ohm
 U1501 PC9A412A: C1597 22uF; CR1200 NM; R1600 NM; L1573 1uH;
 R1500 0 ohm; C1500 22uF; C1598 NM; R1599 NM



DRAWING:
 BOARD NAME: MM1_V01B
 BOARD NUMBER: mm1_v01b
 LAST MODIFIED: Tue Jun 26 18:36:47 2018

ALL RIGHTS RESERVED. REPRODUCTION AND DISCLOSURE PROHIBITED

MODIFIED	NAME	DATE	CHECKED	NAME	DATE
-	SCHEMATIC	18/9/2018	-	SCHEMATIC	18/9/2018
TITLE: NFC Product Name: SCHEMATIC BOARD um06_mmi_v01b					
P. N.: _____ FORMAT: A2 DOCUMENT NUMBER: _____ TYPE: _____ PART: _____ VERS.: _____					
Page/SHEET: 12 / 16					

Title: Basenet Report
 Design: um06_mmi_v01b
 Date: Jun 26 10:37:10 2018


Base nets and synonyms for
 um06_lib.WM06_MMI_V01B@um06_lib.um06_mmi_v01b(sch_1)
 Base Signal Location(Zone1dir)

1SIM_CLK 2C2 5A2
 1SIM_IO 2C2 5A1
 1SIM_RST 2C2 5A2
 2SIM_CLK 2C2 5B2
 2SIM_IO 2C2 5B1
 2SIM_RST 2C2 5B2
 3G_TRXB1 6A3 6B4
 3G_TRXB2 6A3 6C4
 3G_TRXB5 6A3 6C3
 3G_TRXB8 6A3 5A4
 A0 5A3 5A4
 A1 5A3 5A4
 A2 5A3 5A4
 A3 5A3 5A4
 A4 5A3 5A4
 A5 5A3 5A4
 A6 5A3 5A4
 A7 5A3 5A4
 A8 5A3 5A4
 A9 5A3 5B4
 AUD_CLK 3B3 4C3
 AUD_MISO 3C3 4C3
 AUD_MOSI 3C3 4C3
 AUXADC_REF 2C2 7B2
 AUXADC_TSX 2C1 7A2
 AUX_IN0_NTC 4A3 4C4
 AVDD 2B1 3A3 3C3
 BATSNS 2C2 2C3 2D3
 CAMCLKB 4B3 9B1
 CAMPNB 4B3 9B1
 CAMRSTB 4B3 9B1
 CAM_IDB 4B1 9B1
 CAM_SCLK 4B4 9B1
 CAM_SDAT 4B4 9B1
 CHG1V1_DM 2C2 4A1
 CHG1V1_DP 2C2 4A1
 CHG_LDO 2B3 2C3
 CLK4_AUDIO 2B2 7B3
 CLK32K 2C1 4C3
 CPL_IN 6C2 6C2
 CPL_OUT 6C2 6C2
 CTOUCH_SHDN 10B4 4B3 10B4
 CTP_SCLK 10C4 4B1 10B4
 CTP_SDAT 10B4 4B1 10B4
 D0 5A3 5A4
 D1 5A3 5A4
 D2 5A3 5A4
 D3 5A3 5A4
 D4 5A3 5A4
 D5 5A3 5A4
 D6 5A3 5A4
 D7 5A3 5A4
 D8 5A4 5B3
 D9 5A4 5B3
 D10 5A4 5B3
 D11 5A4 5B3
 D12 5A4 5B3
 D13 5A4 5B3
 D14 5A4 5B3
 D15 5A4 5B3
 D16 5B3 5B4
 D17 5A4 5B3
 D18 5A4 5B3
 D19 5B3 5B4
 D20 5B3 5B4
 D21 5B3 5B4
 D22 5B3 5B4
 D23 5B3 5B4
 D24 5B3 5B4
 D25 5B3 5B4
 D26 5B3 5B4
 D27 5B3 5B4
 D28 5B3 5B4
 D29 5B3 5B4
 D30 5B3 5B4
 D31 5B3 5B4
 DCS1000 6A3 6B4

DCX0_32K 2C1 7A3
 DQ00 5B4 5D3
 DQ01 5B4 5D3
 DQ02 5B4 5D3
 DQ03 5B4 5D3
 DQ00 5B4 5C3
 DQ00* 5B4 5C3
 DQ01 5B4 5C3
 DQ01* 5B4 5C3
 DQ02 5B4 5D3
 DQ02* 5B4 5D3
 DQ03 5B4 5D3
 DQ03* 5B4 5D3
 DVDD12_EMI 3A1 5A2 5D2
 3A1 2B1
 DKL_REQ 4B1 12C2
 ECKE 5B4 5C3
 ECSS0* 5B4 5C3
 ECSS1* 5B4 5C3
 ED_CLK 5B4 5C3
 ED_CLK* 5B4 5C3
 EINT_CTP 10B4 4C3 10B4
 EINT_HALL 4B3 10C2
 EINT_NFC 4B1 12C2
 EINT_PMU 2B2 4A3
 EINT_SWCHG 2D3 4C3
 EMMC_CLK 4B1 5C3
 EMMC_CMD 4B1 5C3
 EMMC_DAT0 4B1 5C3
 EMMC_DAT1 4B1 5C3
 EMMC_DAT2 4B1 5C3
 EMMC_DAT3 4B1 5C3
 EMMC_DAT4 4B1 5C3
 EMMC_DAT5 4B1 5C3
 EMMC_DAT6 4B1 5C3
 EMMC_DAT7 4B1 5C3
 EMMC_RST 4B1 5C3
 EN_CHG 2D4 4C3
 EN_FLASH 4B3 9C2
 EN_LCD_BL 4B4 9C4
 EN_NFC 4B1 12C3
 EN_SAM_SW0 4B1 13A4
 EN_TORCH 4C1 9C2 9D3
 ESE_SPT_CLK 4A1 12C1
 ESE_SPT_CS 4A1 12C1
 ESE_SPT_MISO 4B1 12C1
 ESE_SPT_MOSI 4A1 12C1
 EVREF 5B4 5D3 5D3
 FIX 2C4
 FLASHN 9C1 9D2
 FLASHP 9C1 9C2
 FLY 10C4
 GGE_PA_HBIN 6A2 7C4
 GGE_PA_LBIN 6A2 7C4
 GND_AUXADC 2C2 7B2
 GND_VPROC_FB 2A1 3B1
 GPIO2 12C1 12C2
 GPS_ANT 8A3
 GPS_LNA_EN 4C1 8A2
 GPS_RF_IN 8A2 8C4
 GSM900 6A3 6B4
 ISENSE 2C2 2C3 2D3
 KC0L0 4C1
 KC0L1 4C1
 LCD_ID 4A3 9B3
 LCD_RSTB 4A4 9B3
 LEDN 9B3 9C3
 LEDP 9B3 9C3
 LED_BLUE 2A1 10D3
 LED_GREEN 2A1 10C3
 LED_RED 2A1 10C3
 LOUDSPKN0 3D3 11B4
 LOUDSPKP0 3D3 11B4
 LPTE 4A4 9B3
 MIPI_RCN 4A3 9A1
 MIPI_RCP 4A3 9A1
 MIPI_RDN0 4A3 9A1
 MIPI_RDN1 4B3 9B1
 MIPI_RDP0 4A3 9A1
 MIPI_RDP1 4B3 9A1
 MIPI_TCN 4B4 9B3
 MIPI_TCP 4B4 9B3
 MIPI_TDN0 4B4 9A3
 MIPI_TDN1 4B4 9A3
 MIPI_TDP0 4B4 9A3

MIPI_TDP1 4B4 9A3
 NFC_CLK_REQ 4B3 12C2
 PDET 6C1 7B4
 PMU_SPT_CS 2B2 4A3
 PMU_SPT_MISO 2B2 4A3
 PMU_SPT_MOSI 2B2 4A3
 PMU_SPT_SCK 2B2 4A3
 PARKKEY 2B3 4C2
 RESET_SAM 4B1 13C2
 RFIG_CLK_NFC 7B3 12C3
 RFIN_HB 6B1 6C1
 RFOUT_HB 6B2 6B2 6C2
 RFOUT_HBB1 6B2 6B3
 RFOUT_HBB2 6C2 6C3
 RFOUT_LB 6C2 6D2
 RFOUT_LBB5 6C2 6D2
 RFOUT_LBB9 6C3 6D2
 RSET_SC1 13C1 13C4
 RXS02N 6B3 7B4
 RXS02P 6B3 7B4
 RX1800N 6B3 7B4
 RX1800P 6B3 7B4
 RXD_SC1 13B1 13C3
 RXIN_N 12B1 12B2
 RXIN_P 12A2 12B1
 SC1C6 5B1 13C4
 SC1CLK 5B2 13C4
 SC1DATA 5B1 13C4
 SC1RST 5B2 13C4
 SCVCC 5B1 5B2 13C4
 SD_CLK 4B1 5C1
 SD_CMD 4B1 5C1
 SD_DAT0 4B1 5D1
 SD_DAT1 4B1 5D1
 SD_DAT2 4B1 5C1
 SD_DAT3 4B1 5C1
 SENSE_SCLK 2D4 4B1 10B1 12C2
 SENSE_SWAP 2D4 4B1 10B1 12C3
 SIM1_NFC_SWP1 5A1 12B1
 SIM1_SCLK 2B2 4A3
 SIM1_SIO 2B2 4A3
 SIM2_SCLK 2B2 4A3
 SIM2_SIO 2B2 4A3
 SRCLKENA 2B2 4B3
 SVDL_PWR_REQ 4B1 12C2
 SYSRST* 2B2 4B3
 TREF 2C1 2C3 2C4
 TXD_SC1 13B1 13C3
 TX_EN 6A2 7B3
 TX_HB_SEL 6C2 7B3
 TX_LB_SEL 6D2 7B3
 TX_N 12A2 12B1
 TX_P 12A2 12B1
 TX_PWR_REQ 12C2 12C4
 URXD1 4B2
 URXD2 4B3 13B2
 USB_DM 4A1 11C1
 USB_DP 4A1 11C1
 USB_DRV 2D4 4B3
 USB_ID 4B3 11C2
 UTXD1 4B2
 UTXD2 4B3 13B2
 VAPC 6A2 7C3
 VBATB 2A3 2B4 2C4 3C3 6B1 6B2 6B2
 6C1 9C2 9C3 9C4 10C3 12B3 12B4
 13A4
 6B1 6B2 6C2
 2B4 2A3
 2A3 2B4
 2A3 2B4
 2A3 2B4
 2A3 2B4
 6A2 7B3


ALL RIGHTS RESERVED. REPRODUCTION AND DISCLOSURE PROHIBITED

MODIFIED	NAME	DATE	CHECKED	NAME	DATE
	SCHEMATIC	18/9/2018		SCHEMATIC	18/9/2018
TITLE					
Product Name					
SCHEMATIC BOARD um06_mmi_v01b		PAGE/SHEET		13 / 16	
P. N.		FORMAT		DOCUMENT NUMBER	
		A2			
VER.	DATE	TYPE		PART	VER.

SCH DRAWING A2

UC1	6A2 7B3
UC2	6A2 7B3
UCAMA	2B1 9A1
UCAMD	2B1 9B1
UCAMIO	2B1 4B4 9B1
UCAM_AF	2B1 9B1
VCC1V8	13B3 13B3
VCC3V3	13B1 13B1 13B1 13B3 13B3 13B4
	13B4
VCDT	2B3 2C2
VCHG	2B3 2C4 11C2
VCHGIN	2C2 2C3
VCONN_1V8	2B1 8B3 8B4 8C4
VCONN_2V8	2B1 8A2
VCONN_3V3	2B1 8B3
VDD1V8	2B1 2B3 2D3 3A3 3A3 3B3 3B3
	3B3 3B3 4A1 4B1 4C4 5A2 5C2
	9B3 10A1 10A2 10A4 10B1 10B2
	10C2 12B3 13B2 13B2 13B2
	10C4 2B1 3A3 9B3 10B4
VDD2V8	
VDDK	3A1
VDDK_CORE	3A1
VDDUP	12B3
VEMMC_3V3	2B1 5B2
VGP1_2V8	2B1 6C2 6D2
VGP2_EFUSE	2C1 4B3
VIB	2A1
VM0	6C1 6C1 7B3
VM1	6B1 6C1 7B3
VMC	2B1 3A3
VMCH	2B1 5C1
VPROC	2A1 3A1
VPROC_FB	2A1 3B1
VREG	2C4 2D4
URF1V8	2B1 7A3
VRTC	2B1
VSAM_5V0	13A3 13B4 13C4
VSIM1	2B2 5A2 12B1
VSIM1_NFC	5A2 12B1
VSIM2	2C2 5B2
VSYS	2A1 2A3
VTCX0	2B1 7A2 7A3 7A3 7A3
VUSB	2B1 4A1
WAKEUP_REQ	4B1 12C2
WATCHDOG*	2B3 5B4
WBAND1_RXN	6C3 7A4
WBAND1_RXP	6C3 7A4
WBAND2_RXN	6D3 7A4
WBAND2_RXP	6D3 7A4
WBANDS_RXN	6C2 7A4
WBANDS_RXP	6C2 7A4
WBANDB_RXN	6D3 7B4
WBANDB_RXP	6D3 7A4
WFBT_ANT	8A3 8C4
WPA_HB_ON	6C1 6C1 7B3
WPA_LL_B_ON	6C1 7B3
W_PA_HBIN	6C1 7B4
W_PA_LLBIN	6C1 7B4
XTAL1	12C2 12D3
XTAL2	12C2 12D3

ALL RIGHTS RESERVED. REPRODUCTION AND DISCLOSURE PROHIBITED

MODIFIED	NAME	DATE	CHECKED	NAME	DATE
	SCHEMATIC	18/9/2018		SCHEMATIC	18/9/2018
TITLE					
Product Name					
SCHEMATIC BOARD um06_mmi_v01b				PAGE/SHEET	
				14 / 16	
P. N.			FORMAT		
			A2		
VER.	DATE	DOCUMENT NUMBER		TYPE	PART
					VERS.
SCH DRAWING A2					

Title: Cref Part Report
 Design: um06_mmi_v01b
 Date: Jun 26 10:37:10 2018


B.200 B_IND8P [2C1]
 B.201 B_IND4P [2C1]
 B.202 B_IND3P [2C1]
 B.203 B_IND2P [2D1]
 B.204 B_IND1P [2D1]
 B.205 B_IND1P [2D1]
 B.206 B_IND4P [2D1]
 B.500 B_IND1P [6A4]
 B.501 B_IND1P [6A4]
 B.502 B_IND1P [6A4]
 B.700 B_IND1P [6B4]
 B.701 B_IND1P [6B4]
 B.1009 B_IND1P [11B3]
 B.1009 B_IND1P [11B3]
 B.1500 FLANKFA_0651 [12B4]
 BT100 BATTERY [2B1]
 C101 PC0402 [2B3]
 C102 PC0201 [2C2]
 C103 PC0603X5R [2C3]
 C104 PC0201 [2C3]
 C105 PC0201 [2C2]
 C106 PC0201 [2C2]
 C109 PC0603X5R [2A2]
 C110 PC0201 [2A1]
 C111 PC0201 [2A2]
 C112 PC0201 [2A2]
 C113 PC0201 [2A3]
 C114 PC0603X5R [2A2]
 C115 PC0201 [2B2]
 C116 PC0201 [2B2]
 C117 PC0201 [2B1]
 C119 PC0603X5R [2C3]
 C121 PC0603X5R [2B1]
 C125 PC0201 [2C2]
 C126 PC0201 [2C1]
 C127 PC0201 [2B1]
 C128 PC0201 [2B1]
 C130 PC0201 [2B2]
 C135 PC0201 [2B1]
 C136 PC0402 [2B1]
 C137 PC0603X5R [2A2]
 C138 PC0201 [2B1]
 C140 PC0201 [2B1]
 C200 PC0201 [3C3]
 C202 PC0201 [3B2]
 C203 PC0201 [3A2]
 C205 PC0201 [3B1]
 C206 PC0201 [3A1]
 C207 PC0402 [3C3]
 C210 PC0201 [3B1]
 C212 PC0201 [3A1]
 C213 PC0201 [3C3]
 C214 PC0201 [3A1]
 C215 PC0201 [3B2]
 C216 PC0201 [3B2]
 C217 PC0201 [3B2]
 C219 PC0402 [3A2]
 C220 PC0201 [3B2]
 C225 PC0402 [3A1]
 C226 PC0201 [3B1]
 C227 PC0201 [3A1]
 C228 PC0603X5R [3B1]
 C232 PC0201 [3C3]
 C248 PC0201 [3D3]
 C249 PC0201 [3D3]
 C260 PC0201 [3A1]
 C261 PC0201 [3A2]
 C263 PC0201 [3A1]
 C264 PC0201 [3A2]
 C265 PC0201 [3B1]
 C266 PC0201 [3A2]
 C271 PC0201 [3A2]
 C273 PC0201 [3A1]
 C279 PC0201 [3A1]
 C280 PC0201 [3B1]
 C281 PC0603X5R [3A1]
 C283 PC0603X5R [3B1]
 C287 PC0201 [2D4]
 C288 PC0201 [2D3]
 C300 PC0201 [4A3]

C.306 PC0402 [2D4]
 C.307 PC0201 [4A1]
 C.309 PC0201 [2C4]
 C.310 PC0603X5R [2C3]
 C.311 PC0201 [2D3]
 C.312 PC0201 [2C3]
 C.313 PC0201 [2D3]
 C.318 PC0201 [4A1]
 C.400 PC0201 [5D2]
 C.405 PC0201 [5A1]
 C.406 PC0201 [5A1]
 C.407 PC0201 [5B2]
 C.408 PC0201 [5B2]
 C.409 PC0201 [5A1]
 C.411 PC0201 [5B2]
 C.413 PC0201 [5A1]
 C.414 PC0201 [5B1]
 C.415 PC0402 [5C1]
 C.416 PC0402 [5B3]
 C.417 PC0201 [5B1]
 C.425 PC0201 [5A2]
 C.426 PC0402 [5A3]
 C.428 PC0402 [5A2]
 C.429 PC0201 [5A3]
 C.430 PC0201 [5A3]
 C.431 PC0201 [5A3]
 C.432 PC0201 [5A3]
 C.433 PC0201 [5C2]
 C.434 PC0402 [5B3]
 C.435 PC0201 [5C2]
 C.436 PC0402 [5B2]
 C.437 PC0201 [5B3]
 C.438 PC0201 [5B2]
 C.440 PC0201 [5D2]
 C.500 PC0201 [6A4]
 C.501 PC0402 [6B1]
 C.502 PC0201 [6A4]
 C.503 PC0201 [6A3]
 C.504 PC0201 [6A3]
 C.505 PC0201 [6B2]
 C.512 PC0201 [6B4]
 C.513 PC0201 [6B4]
 C.516 PC0201 [6B4]
 C.517 PC0201 [6B4]
 C.518 PC0201 [6B4]
 C.519 PC0201 [6B4]
 C.523 PC0201 [6A2]
 C.524 PC0201 [6A2]
 C.526 PC0201 [6C3]
 C.529 PC0201 [6C3]
 C.530 PC0402 [6C1]
 C.531 PC0201 [6B2]
 C.534 PC0201 [6C2]
 C.535 PC0201 [6D2]
 C.536 PC0201 [6C1]
 C.537 PC0201 [6D2]
 C.538 PC0201 [6C1]
 C.539 PC0201 [6C1]
 C.540 PC0201 [6C4]
 C.541 PC0201 [6D2]
 C.542 PC0201 [6D4]
 C.543 PC0201 [6C4]
 C.544 PC0201 [6D4]
 C.545 PC0201 [6D4]
 C.546 PC0201 [6C4]
 C.549 PC0201 [6B2]
 C.550 PC0201 [6C3]
 C.561 PC0201 [6A4]
 C.562 PC0603X5R [6B2]
 C.571 PC0201 [6B2]
 C.587 PC0201 [6C4]
 C.588 PC0201 [6C4]
 C.589 PC0201 [6C4]
 C.590 PC0201 [6C4]
 C.591 PC0201 [6C4]
 C.592 PC0201 [6B4]
 C.594 PC0201 [6C3]
 C.595 PC0201 [6C3]
 C.596 PC0201 [6C3]
 C.598 PC0201 [6B2]
 C.599 PC0201 [7A3]
 C.606 PC0201 [7A3]
 C.607 PC0201 [7A3]
 C.608 PC0201 [7A3]
 C.609 PC0201 [7B2]

C.643 PC0201 [7A3]
 C.705 PC0201 [6A4]
 C.708 PC0201 [6C4]
 C.709 PC0201 [6B3]
 C.722 PC0201 [6B3]
 C.724 PC0201 [6A3]
 C.729 PC0201 [6A3]
 C.731 PC0201 [6A3]
 C.732 PC0201 [6A3]
 C.733 PC0201 [6B2]
 C.734 PC0201 [6A3]
 C.745 PC0201 [6B4]
 C.746 PC0201 [6C3]
 C.747 PC0201 [6C4]
 C.797 PC0201 [6B4]
 C.800 PC0603X5R [9A1]
 C.801 PC0201 [9B1]
 C.803 PC0201 [9B1]
 C.808 PC0201 [9C4]
 C.811 PC0201 [9B3]
 C.812 PC0201 [9B3]
 C.813 PC0201 [9B3]
 C.814 PC0603X5R [9C4]
 C.819 PC0201 [9C3]
 C.820 PC0402 [9A1]
 C.821 PC0201 [9B1]
 C.822 PC0603X5R [9C3]
 C.825 PC0402 [9C2]
 C.826 PC0201 [9C2]
 C.827 PC0201 [9C2]
 C.828 PC0603X5R [9C1]
 C.829 PC0201 [9C1]
 C.830 PC0201 [9D2]
 C.904 PC0201 [10B2]
 C.905 PC0201 [10B2]
 C.912 PC0201 [10C1]
 C.922 PC0402 [10B4]
 C.926 PC0201 [9C4]
 C.930 PC0201 [9B1]
 C.931 PC0201 [9B1]
 C.1020 PC0402 [11C2]
 C.1035 PC0201 [10C1]
 C.1038 PC0201 [2B1]
 C.1102 PC0201 [11A4]
 C.1105 PC0201 [11B4]
 C.1106 PC0201 [11B4]
 C.1186 PC0201 [11B4]
 C.1500 PC0603X5R [12C3]
 C.1501 PC0603X5R [13A3]
 C.1502 PC0201 [13B4]
 C.1503 PC0201 [13B4]
 C.1504 PC0201 [13B4]
 C.1505 PC0201 [13C4]
 C.1506 PC0201 [13B3]
 C.1507 PC0201 [13B3]
 C.1508 PC0201 [13B3]
 C.1509 PC0201 [13B3]
 C.1510 PC0201 [13C3]
 C.1511 PC0201 [13C4]
 C.1512 PC0201 [13C3]
 C.1513 PC0201 [13C3]
 C.1523 PC0603X5R [13A3]
 C.1524 PC0603X5R [13A3]
 C.1525 PC0402 [13B4]
 C.1530 PC0603X5R [13A4]
 C.1558 PC0603X7R [12A4]
 C.1559 PC0603X7R [12A4]
 C.1560 PC0402 [12C3]
 C.1561 PC0402 [12B3]
 C.1562 PC0402 [12B3]
 C.1569 PC0201 [12A3]
 C.1570 PC0201 [12A3]
 C.1571 PC0201 [12A3]
 C.1572 PC0201 [12B3]
 C.1574 PC0201 [12A3]
 C.1575 PC0201 [12A3]
 C.1576 PC0201 [12A3]
 C.1577 PC0201 [12A3]
 C.1578 PC0201 [12A3]
 C.1579 PC0201 [12A3]
 C.1581 PC0201 [12A3]
 C.1582 PC0201 [12A3]
 C.1583 PC0201 [12B2]
 C.1585 PC0402 [12B3]
 C.1586 PC0201 [12B3]
 C.1587 PC0201 [12C1]

C1588 PC0201 [12B2]
 C1589 PC0201 [12B2]
 C1590 PC0201 [12B3]
 C1591 PC0201 [12D3]
 C1592 PC0201 [12D3]
 C1593 PC0201 [12B1]
 C1595 PC0402 [12C1]
 C1596 PC0201 [12C2]
 C1597 PC0603X5R [12C4]
 C1598 PC0603X5R [12C3]
 C1599 PC0402 [12C1]
 C5147 PC0201 [5B1]
 C5148 PC0201 [5A1]
 CR101 PTVSHC3N4V5B [2C4]
 CR102 DIODE [2B4]
 CR103 DIODE [2C4]
 CR105 DIODE [2C3]
 CR200 DIODE [2C4]
 CR404 DIODE [5B2]
 CR405 DIODE [5B2]
 CR406 DIODE [5B2]
 CR407 DIODE [5B1]
 CR408 DIODE [5B1]
 CR501 DIODE [6B2]
 CR901 DIODE [9D2]
 CR910 DIODE [10D3]
 CR911 DIODE [10D3]
 CR912 DIODE [10D2]
 CR1005 DIODE [11C2]
 CR1006 DIODE [11C1]
 CR1007 DIODE [11C1]
 CR1105 DIODE [11A3]
 CR1106 DIODE [11B3]
 CR1200 DIODE [12C4]
 CR1500 DIODE [12A4]
 CR1501 DIODE [12A4]
 D801 DIODE [9C3]
 DS802 LED [9C1]
 DS922 LEDRIG [10C2]
 FL500 BALLUN FILTER [6B4]
 FL501 FILTER SAW8P [6B4]
 FL502 FILTER SAW8P [6C4]
 FL505 FILTER SAW8P [6C3]
 FL508 FILTER SAW8P [6C3]
 FL700 FILTER SAW5 [6A3]
 FL702 DP1608-V1524CAT [6A3]
 J200 CONN4PS [2C4]
 J300 CONN5P2FS [4C1]
 J400 2S3ML_TFLASH2 [5B1, 5A1]
 J601 TSTCOAXS [6A4]
 J805 CONN27PS [9A2]
 J901 CONN5P2FS [10B3]
 J908 CONN23PS [9B4]
 J1101 CONN9PS [11C2]
 L101 SELFCMS [2A1]
 L102 SELFCMS [2A1]
 L300 SELFCMS [2D3]
 L500 SELFCMS [6B4]
 L503 SELFCMS [6B3]
 L504 SELFCMS [6D3]
 L505 SELFCMS [6B3]
 L506 SELFCMS [6B3]
 L507 SELFCMS [6D3]
 L510 SELFCMS [6D3]
 L512 SELFCMS [12A4]
 L514 SELFCMS [6D3]
 L515 SELFCMS [6D3]
 L518 SELFCMS [6C3]
 L519 SELFCMS [6D4]
 L521 SELFCMS [6C4]
 L524 SELFCMS [6B4]
 L526 SELFCMS [6B3]

ALL RIGHTS RESERVED.REPRODUCTION AND DISCLOSURE PROHIBITED


MODIFIED	NAME SCHEMATIC	DATE 18/9/2018	CHECKED	NAME SCHEMATIC	DATE 18/9/2018
TITLE		SageReal 			
Product Name SCHEMATIC BOARD um06_mmi_v01b					
P. N.		FORMAT A2		PAGE/SHEET 1/16	
VER.	DATE	DOCUMENT NUMBER	TYPE	PART	VERS.

L527	SELF CMS	{6B3}
L528	SELF CMS	{6B3}
L539	SELF CMS	{6C4}
L540	SELF CMS	{6D4}
L541	SELF CMS	{6C4}
L543	SELF CMS	{6B4}
L550	SELF CMS	{6C3}
L551	SELF CMS	{6C3}
L555	SELF CMS	{6C3}
L556	SELF CMS	{6C3}
L557	SELF CMS	{6C3}
L558	SELF CMS	{6C3}
L559	SELF CMS	{6C3}
L563	SELF CMS	{6D4}
L564	SELF CMS	{6C4}
L600	SELF CMS	{7B4}
L702	SELF CMS	{8A2}
L800	SELF CMS	{9C4}
L1103	SELF CMS	{11B4}
L1104	SELF CMS	{11B4}
L1500	SELF CMS	{13A4}
L1571	SELF CMS	{12A3}
L1572	SELF CMS	{12A3}
L1573	SELF CMS	{12B4}
M1002	VIBREUR	{2B1}
MA305	FANS400	{2D3}
MA501	SKY77758	{6C2}
MA504	RF7241	{6B2}
MA505	MXD8625C	{6C2}
MA509	MXD8625C	{6D2}
MA603	SKY7759X	{6A3}
MA701	MAX2659	{8A2}
MA902	OC8178	{9C4}
MA1500	AKJ3610	{13A3}
MA1501	AK9564	{13C3}
MN100	MT6323	{2B2}
MN100	MT6323	{3C4}
MN300	MT65X0	{3B2}
MN300	MT65X0	{4B3 4B2}
MN300	MT65X0	{5B4}
MN300	MT65X0	{7B4}
MN300	MT65X0	{8C3}
MN400	EMMCDDR3L221	{5B3}
MN900	IM4A220	{10B1}
MN1002	HALL6P	{10C1}
MN1500	PNS53	{12C2}
Q702	BC847BF	{9D2}
Q1500	MOSNUMT3	{13B2}
Q1501	MOSNUMT3	{13B2}
Q1502	MOSNUMT3	{13C2}
R100	PR0201	{2C3}
R101	PR0201	{2B3}
R102	PR0201	{2B3}
R103	PR0201	{2B3}
R104	PR0201	{2C2}
R106	PR0201	{2C1}
R107	PR0201	{2C3}
R108	PR0402	{2B2}
R113	PR0402	{2A1}
R114	PR0201	{2B1}
R217	PR0201	{2D3}
R220	PR0201	{2D4}
R221	PR0201	{2D4}
R222	PR0201	{2D4}
R223	PR0201	{2D4}
R301	PR0201	{4B4}
R302	PR0201	{4B4}
R303	PR0201	{4B4}
R304	PR0201	{4B1}
R305	PR0201	{4B1}
R308	PR0402	{4C1}
R309	PR0402	{4C1}
R312	PR0201	{4C4}
R331	PR0201	{4A1}
R337	PR0201	{4B1}
R338	PR0201	{4B1}
R341	PR0201	{4A3}
R342	PR0201	{4C3}
R400	PR0201	{5D2}
R401	PR0201	{5D2}
R403	PR0201	{5B3}
R404	PR0201	{5B4}
R405	PR0201	{5B3}
R428	PR0201	{5A2}
R429	PR0201	{5A2}

R430	PR0201	{5B2}
R431	PR0201	{5B2}
R432	PR0201	{5B2}
R433	PR0201	{5B2}
R434	PR0201	{5B2}
R435	PR0201	{5B2}
R436	PR0201	{5B1}
R437	PR0201	{5B1}
R438	PR0201	{5B1}
R439	PR0201	{5B1}
R500	PR0201	{6A4}
R501	PR0201	{6A4}
R502	PR0201	{6C2}
R503	PR0201	{6A2}
R504	PR0201	{6A3}
R506	PR0201	{6A2}
R507	PR0201	{6A2}
R510	PR0201	{6A2}
R517	PR0201	{6D3}
R518	PR0201	{6C1}
R520	PR0201	{6A2}
R521	PR0201	{6A2}
R522	PR0201	{6A2}
R523	PR0201	{6B2}
R530	PR0201	{6A2}
R531	PR0201	{6A2}
R533	PR0201	{6A2}
R534	PR0201	{6A2}
R536	PR0201	{6C1}
R538	PR0201	{6C1}
R554	PR0201	{6C2}
R555	PR0201	{6C2}
R556	PR0201	{6C1}
R557	PR0201	{6C1}
R558	PR0201	{6B2}
R608	PR0201	{7B4}
R613	PR0201	{7B2}
R614	PR0201	{7B2}
R615	PR0201	{7A2}
R702	PR0201	{8A3}
R718	PR0402	{9C2}
R751	PR0201	{8C4}
R801	PR0201	{9B4}
R802	PR0402	{9A1}
R804	PR0201	{9C3}
R805	PR0201	{9C3}
R806	PR0201	{9B2}
R807	PR0201	{9C2}
R808	PR0201	{9C1}
R809	PR0402	{9C4}
R810	PR0402	{9C1}
R814	PR0201	{9C3}
R907	PR0201	{9D3}
R908	PR0201	{9C4}
R910	PR0201	{10A4}
R923	PR0201	{9D3}
R924	PR0603	{9C1}
R925	PR0603	{9C1}
R1020	PR0402	{11C1}
R1021	PR0402	{11C1}
R1022	PR0402	{11C2}
R1500	PR0402	{12B3}
R1501	PR0201	{12C2}
R1502	PR0201	{12C1}
R1503	PR0201	{13C4}
R1504	PR0201	{13C4}
R1506	PR0201	{13C3}
R1513	PR0201	{13B2}
R1514	PR0201	{13B2}
R1515	PR0201	{13B2}
R1516	PR0201	{13B2}
R1517	PR0201	{13C2}
R1518	PR0201	{13C2}
R1530	PR0201	{13B4}
R1531	PR0201	{13C4}
R1532	PR0402	{13C4}
R1573	PR0201	{12A3}
R1574	PR0201	{12A3}
R1575	PR0201	{12A3}
R1576	PR0201	{12A3}
R1578	PR0201	{12C3}
R1579	PR0201	{12C3}
R1580	PR0201	{12C2}
R1581	PR0201	{12C2}
R1582	PR0201	{12A3}

R1583	PR0201	{12B3}
R1584	PR0201	{12C2}
R1585	PR0201	{12C2}
R1586	PR0201	{12C2}
R1599	PR0201	{12B3}
R1600	PR0201	{12C4}
RT205	DIODE	{4D1}
RT309	CTN	{4C4}
RT921	DIODE	{10B4}
RT922	DIODE	{10B4}
RT923	DIODE	{10B3}
RT924	DIODE	{10B3}
RT925	DIODE	{10B3}
RT1004	DIODE	{11C2}
TP101	POINTEST	{2B4}
TP102	POINTEST	{2B3}
TP103	POINTEST	{2B4}
TP104	PLOT	{2A1}
TP200	POINTEST	{2C4}
TP301	PLOT	{4B3}
TP302	PLOT	{4B3}
TP304	POINTEST	{4C1}
TP900	PLOT	{10B4}
TP901	PLOT	{10B4}
TP902	PLOT	{10B4}
TP903	PLOT	{10C4}
TP904	PLOT	{10C4}
TP905	PLOT	{10C4}
TP1002	POINTEST	{11C2}
TP1004	POINTEST	{11C1}
TP1005	POINTEST	{11C1}
TP1006	POINTEST	{11B3}
TP1007	POINTEST	{11B3}
TP1008	POINTEST	{11C2}
TP1500	PLOT	{12C2}
TP1501	PLOT	{12C2}
TP1502	PLOT	{12C3}
TP1503	PLOT	{12C2}
TP1504	PLOT	{12C2}
U800	SP6586	{9C2}
U1501	PC9410A	{12C3}
Y600	QUARTZ4P	{7B3}
Y1500	QUARTZ4P	{12D3}
Y1501	QUARTZ4P	{13C3}
Z101	ETOILE2	{2B4}
Z103	ETOILE2	{2B4}
Z104	ETOILE2	{2B4}
Z105	ETOILE2	{2B4}
Z106	ETOILE2	{2C1}
Z107	ETOILE2	{2A3}
Z110	ETOILE2	{2C3}
Z111	ETOILE2	{2C3}
Z200	ETOILE2	{3C3}
Z201	ETOILE2	{3C3}
Z202	ETOILE2	{3C3}
Z203	ETOILE2	{3C3}
Z204	ETOILE2	{3B1}
Z205	ETOILE2	{3B1}
Z210	ETOILE2	{3A1}
Z211	ETOILE2	{3A1}
Z502	ETOILE2	{6A4}
Z700	ETOILE2	{8B4}

ALL RIGHTS RESERVED. REPRODUCTION AND DISCLOSURE PROHIBITED

MODIFIED	NAME	DATE	CHECKED	NAME	DATE
	SCHEMATIC	18/9/2018		SCHEMATIC	18/9/2018
TITLE					
Product Name					
SCHEMATIC BOARD um06_mmi_v01b				PAGE/SHEET	
				16 / 16	
P. N.			FORMAT		
			A2		
VER.	DATE	DOCUMENT NUMBER	TYPE	PART	VERS.