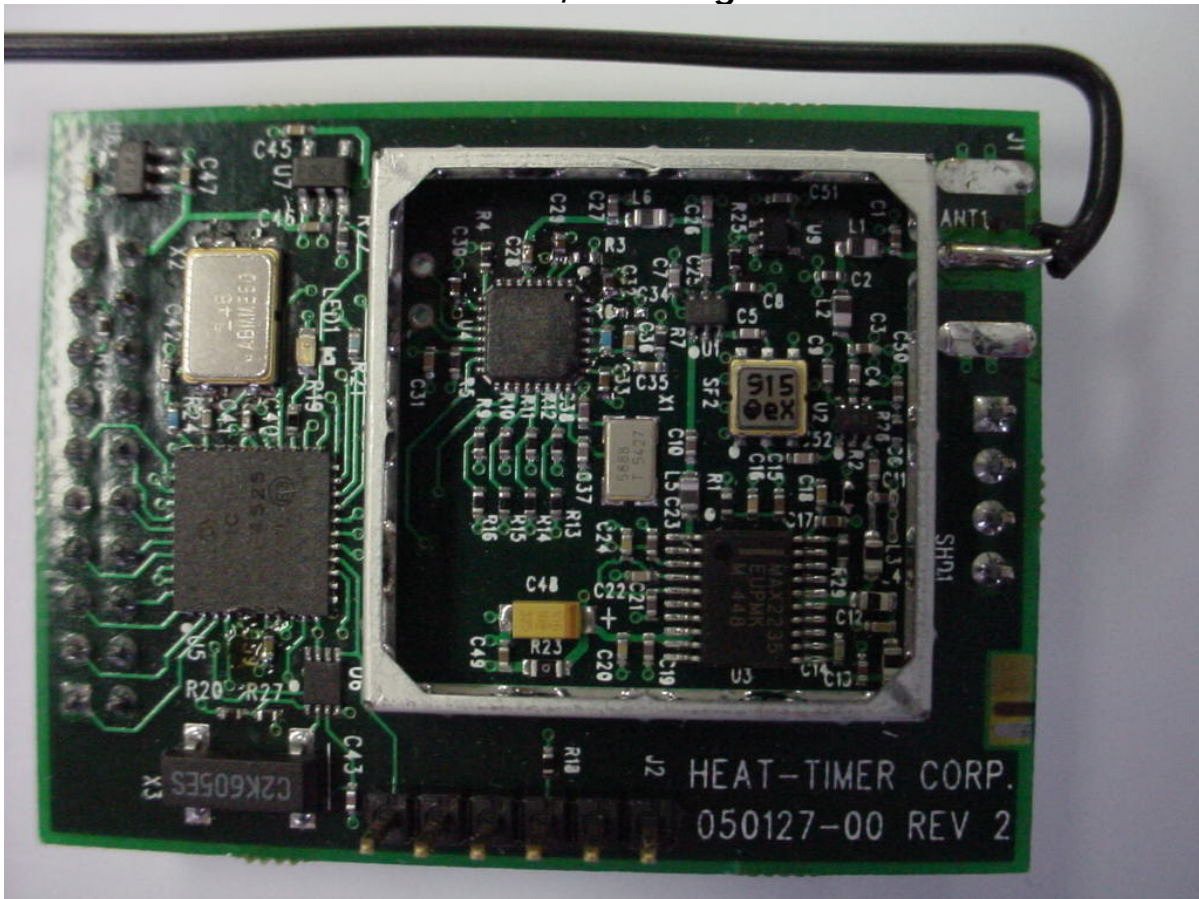


Heat-Timer Corporation

RF Module

FCC ID#: QPI-RFMODULE01

Photo One – Internal
Shield Removed, Showing RF Section

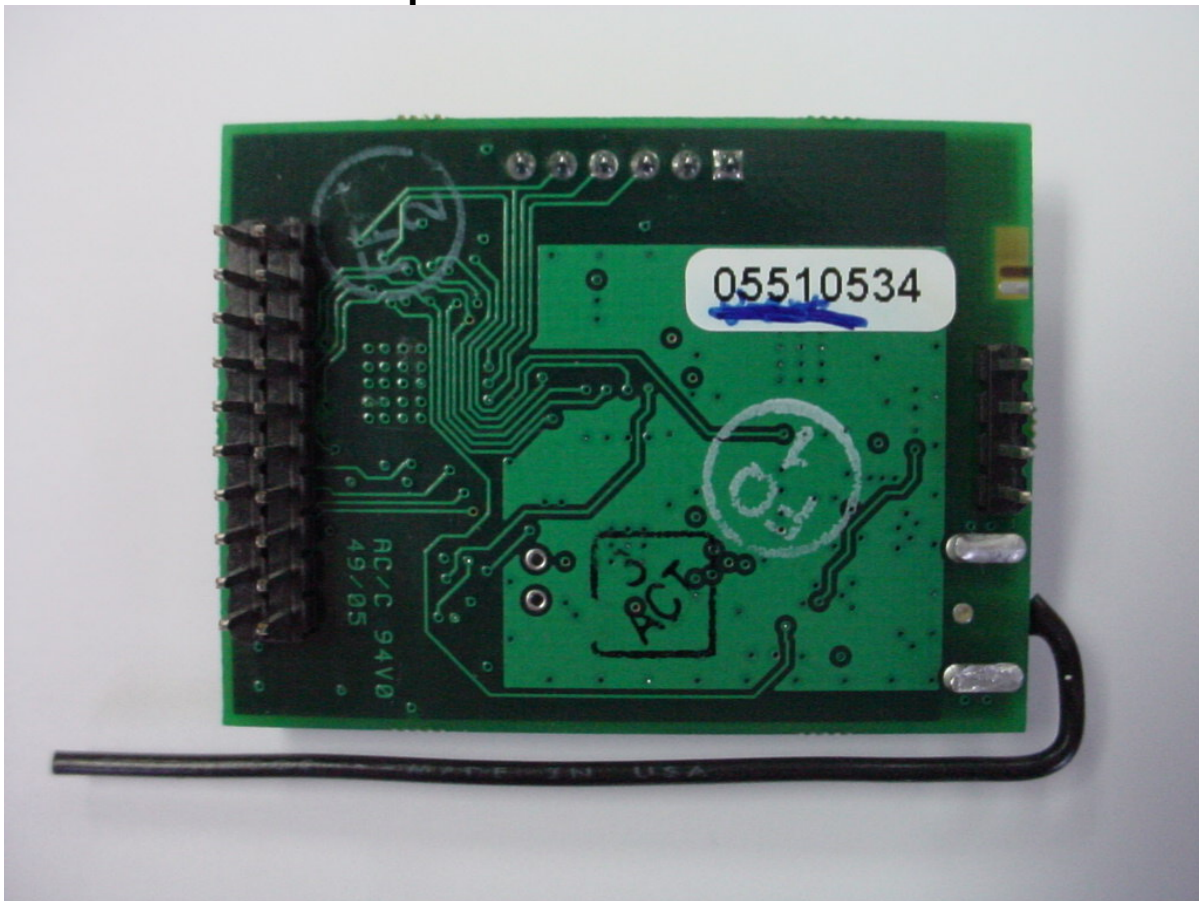


Heat-Timer Corporation

RF Module

FCC ID#: QPI-RFMODULE01

Photo Two – Internal
Flip Side of PCB Module

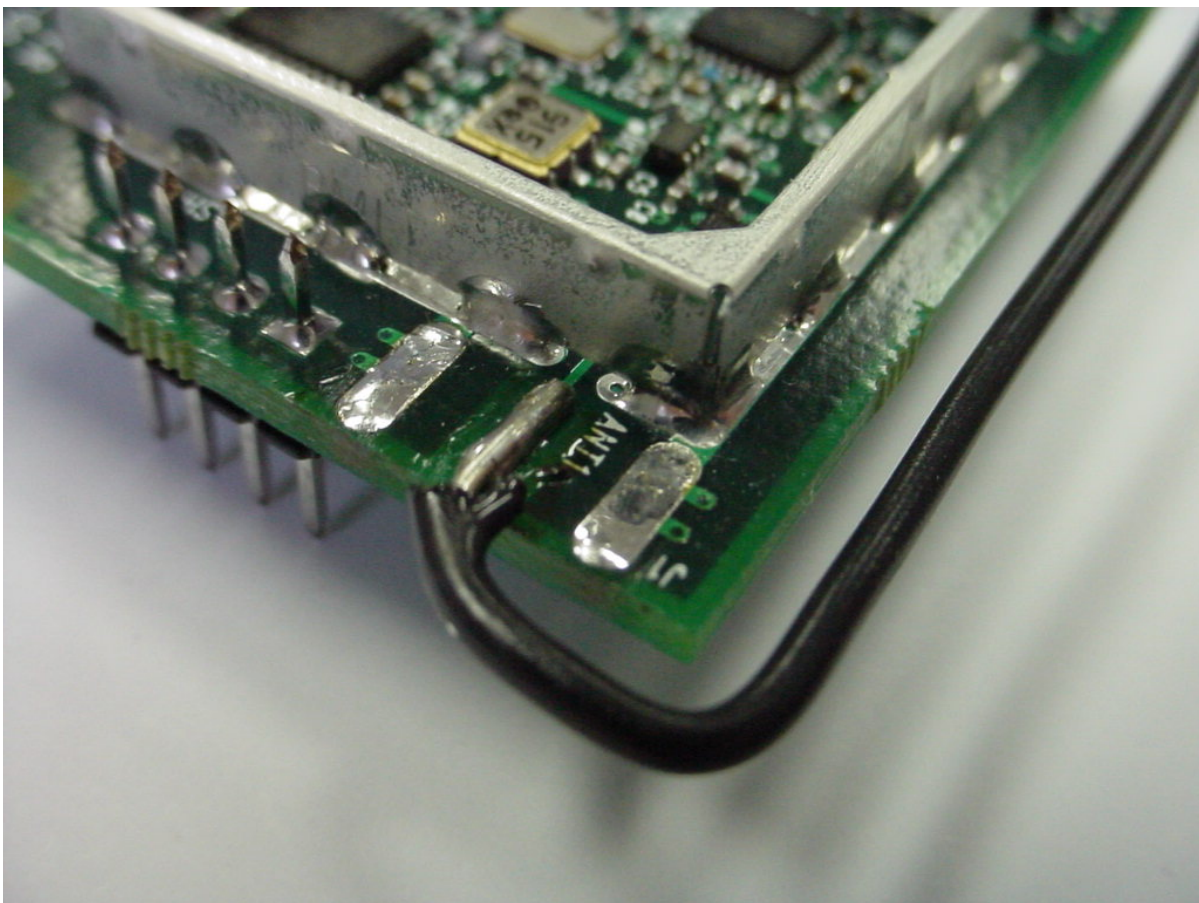


Heat-Timer Corporation

RF Module

FCC ID#: QPI-RFMODULE01

**Photo Three – Internal
Wire Antenna Connection**

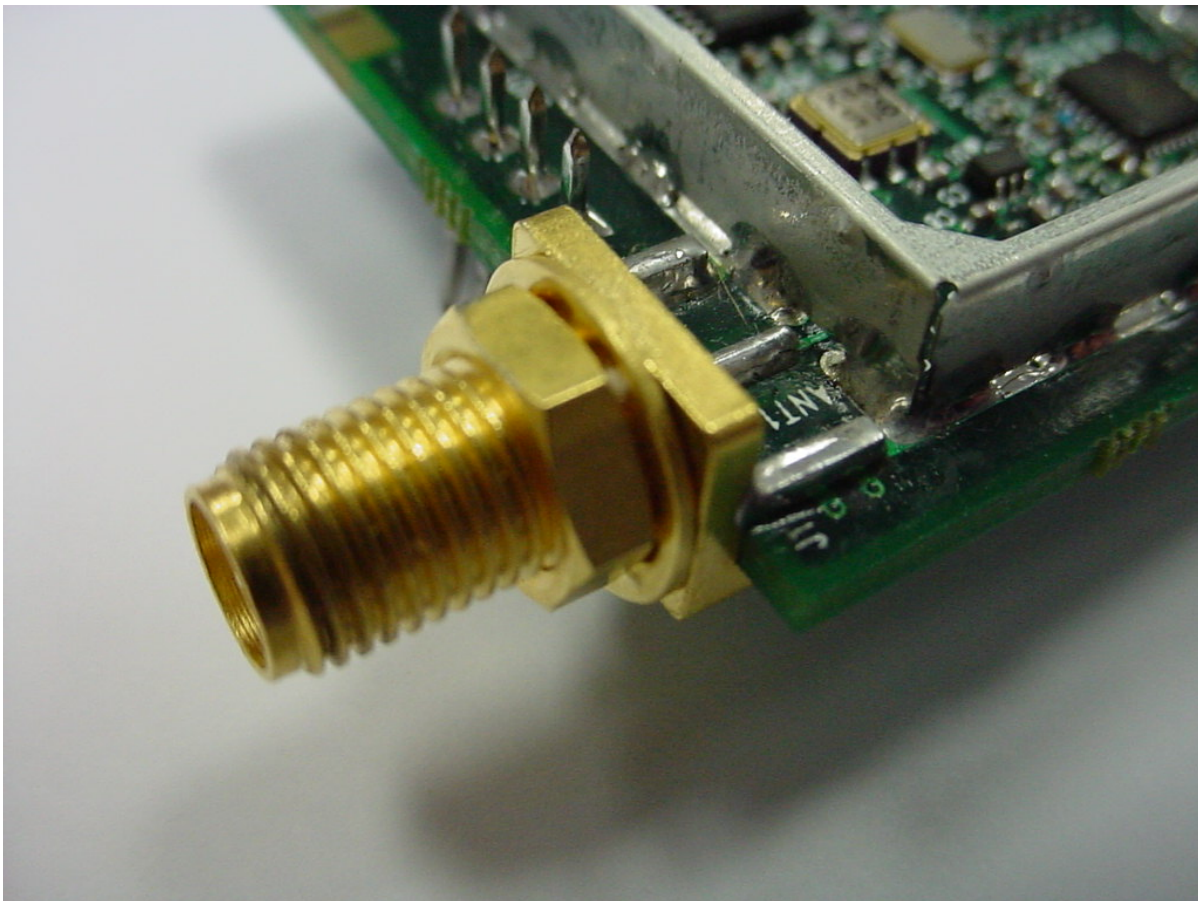


Heat-Timer Corporation

RF Module

FCC ID#: QPI-RFMODULE01

**Photo Four – Internal
Remote Antenna Connection – Reverse SMA**



Heat-Timer Corporation

RF Module
FCC ID#: QPI-RFMODULE01

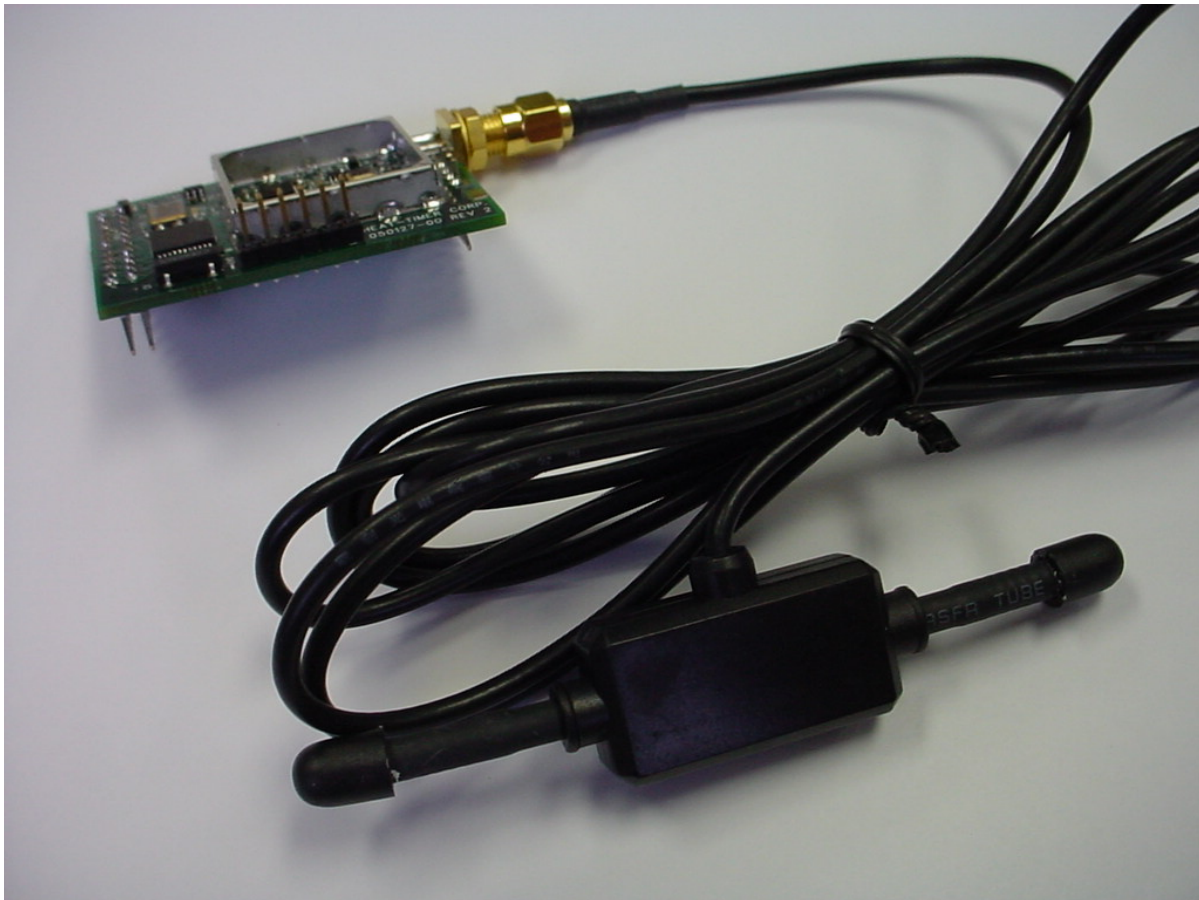
Photo Five – Internal Lynx Antenna



Heat-Timer Corporation

RF Module
FCC ID#: QPI-RFMODULE01

Photo Six – Internal
Remote Antenna Connected



Heat-Timer Corporation

RF Module
FCC ID#: QPI-RFMODULE01

Photo Seven – Internal
Close Up of DiPole Antenna



Heat-Timer Corporation

RF Module
FCC ID#: QPI-RFMODULE01

Photo Eight – Internal
DiPole Antenna Connection

