

# Bluetooth USB Dongle



## User Guide

---

## DECLARATION

**All the parts of this product, including accessory , software and this user guide, are owned by us. Any transmitted , transcribed , imitated, or translated into any language in any form or by means without permission from us are illegal. The specification and information about this product in this user guide just supply for your reference. Any damages arising from any detect or error in this user guide or product, it wills no responsibility from us and will no any kinds notice for any update of content.**

P. S: Their Company owns the product and brand which description in this User Guide.

## Contents

---

<b>1 Product Description</b>	
1.1 Introduction .....	3
1.2 Product Specification.....	3
1.3 Notes to installation .....	4
<b>2 Software Installations</b>	
2.1 System Requirement .....	5
2.2 Start to Installation .....	5
<b>3 Hardware Installations</b>	
<b>4 Function Descriptions</b>	
4.1 Bluetooth Serial port .....	12
4.2 Dial-Up Network .....	15
4.3 Network Access .....	18
4.4 File Transfer .....	24
4.5 Information Exchange .....	25
4.6 Information Synchronization .....	27
4.7 Fax .....	28
<b>5 Bluetooth software configurations</b>	
5.1 General .....	31
5.2 Accessibility .....	32
5.3 Discovery .....	33
5.4 Information Exchange .....	35
5.5 Local Service .....	36
5.6 Client Application .....	37
5.7 Hardware .....	37
5.8 Version Info .....	38
5.9 Notification .....	38
<b>6 Others</b>	
6.1 Mac user reference .....	39
<b>7 Trouble Shooting</b>	40

## 1 Product Description

---

### 1.1 Introduction

Thank you for purchasing this versatile Bluetooth wireless communication product manufactured by us. Bluetooth wireless technology is one kinds of short-range radio technology within the feature such as low-cost, short-range and low power etc. And developing by Ericsson、Intel、3com、Nokia、Toshiba, and other well-known companies.

The special feature, short-range radio link, of Bluetooth wireless technology can be replace the traditional wire connect between PC and others digital devices. Let you connect all the devices together: Desktops, Laptops, telephones, PDAs, Fax machines, Printers and Keyboards via Bluetooth wireless technology.

**This Bluetooth USB Dongle has built-in Bluetooth wireless technology. Just experience the convenience in Bluetooth service: wireless networking access, file transfer, wireless fax, and information synchronization etc. Welcome to Wireless World.**

### 1.2 Product Specification

<b>Input Power</b>	<b>5.0V DC (USB power)</b>
<b>Operation Voltage</b>	<b>1.8V for core logic, 1.8V for RF, 3.3V for I/O</b>
<b>Frequency Range</b>	<b>2402 – 2480MHz, in 2.4GHz license-free ISM band</b>
<b>Data Rate</b>	<b>720 kbps</b>
<b>Power Consumption (T=25°C)</b>	<b>Peak current in ACL data transfer 720Kbps = 55mA Peak current in SCO HV1 connection = 60mA Stand by current = 100µA</b>
<b>Receiver Sensitivity</b>	<b>-80dBm (Single slot BER = 0.1%)</b>
<b>Radio Output Power</b>	<b>0 dBm (Bluetooth Spec. 1.1 class 2 device)</b>
<b>Dimension</b>	<b>50.5x25x3.5 mm</b>

### 1.3 Notes to Installation

**1.3.1 This User Guide description as Microsoft Windows 98SE operation system. If you are Mac user. Please refer to the 6<sup>th</sup> description.**

**1.3.2 Please read this User Guide carefully before installation.**

**1.3.3 Please complete software installation, after that you can set the USB Dongle to computer.**

## 2 Software Installation

---

### 2.1 System Requirement

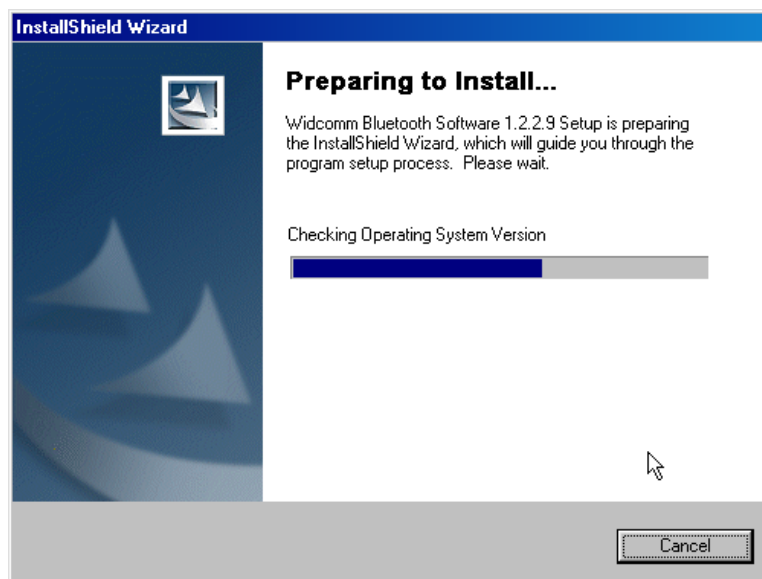
To ensure the device operate correctly, it is necessary to check your system in the minimum requirements as described below:

#### ◆ Windows

- **Processor** : Intel Celeron/Pentium III or above.
- **Operation System** : Windows 98SE/ME/2000/XP
- **System Memory** : 32MB a t lease
- **Hard Drive Free Space** : 12MB

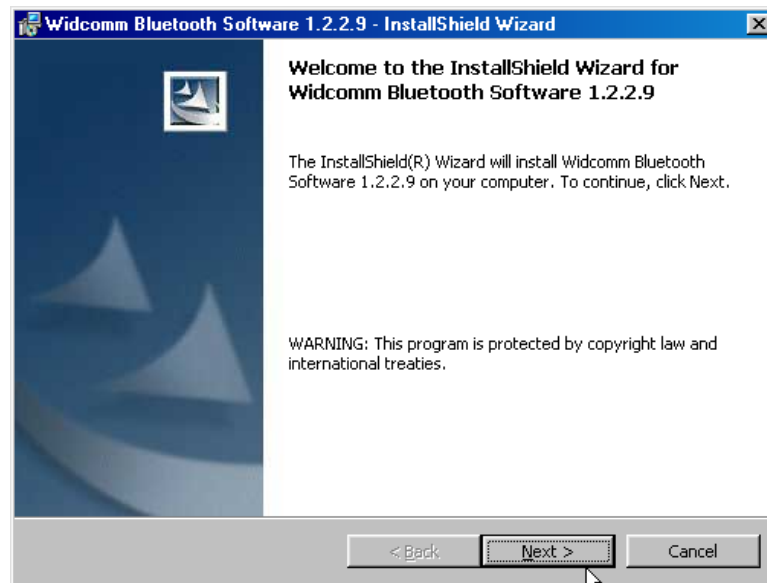
### 2.2 Start to installation

**Step1 Insert the Bluetooth Software CD into CD-ROM drive. Installation program will start automatically if the auto-run function of CD-ROM is enabled.**

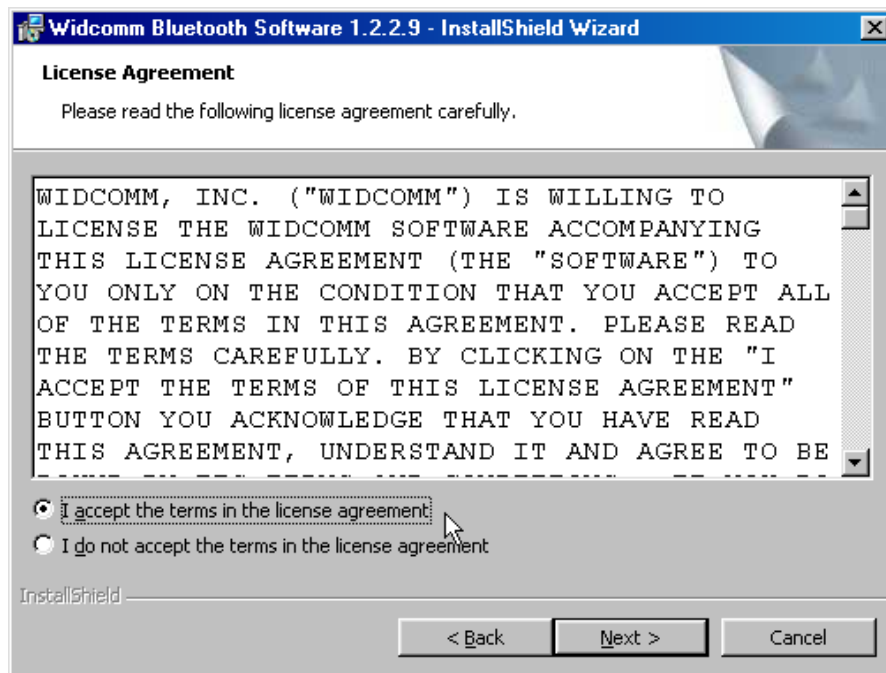


**If the installation program not process automatically, you can utilize the Windows Explorer to browser CD content and run SETUP.exe manually.**

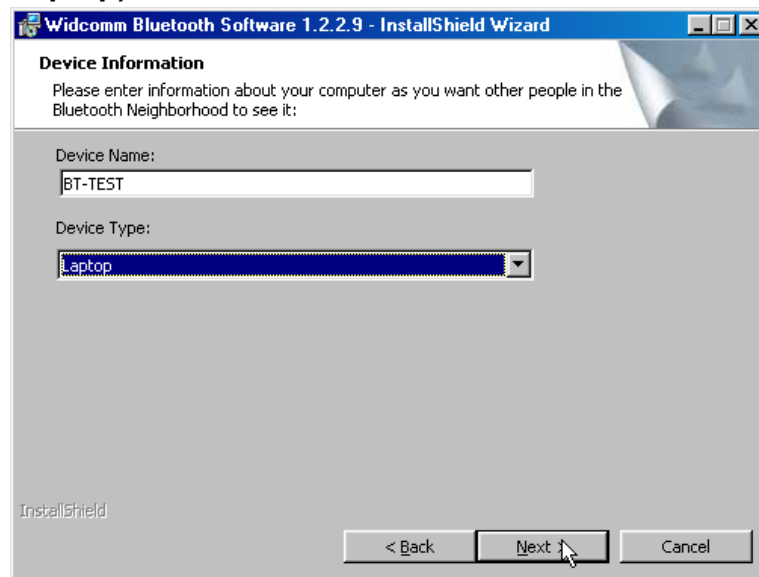
**Step2 With ensuring windows appears, please click “Next” button to continue the software installation.**



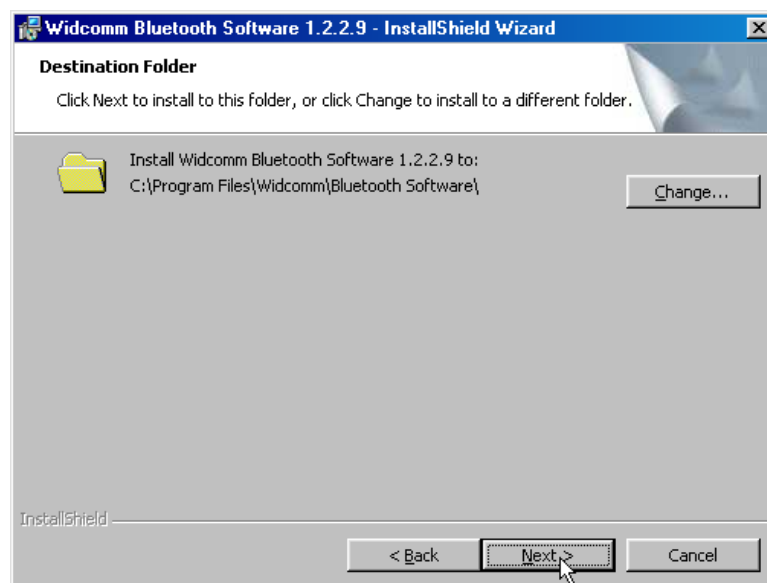
**Step3** In “License Agreement” window, please select **“I accept the terms in the license agreement”** item, and click **“Next”** button to continue.



**Step4** In “Device Information” window, please fill in the blank with a name that the computer you install the Bluetooth USB Dongle. This name will show to other Bluetooth devices in Bluetooth environment. And in “Device Type” item, please choose your computer type (Desktop /Laptop). Then click “NEXT” to continue.

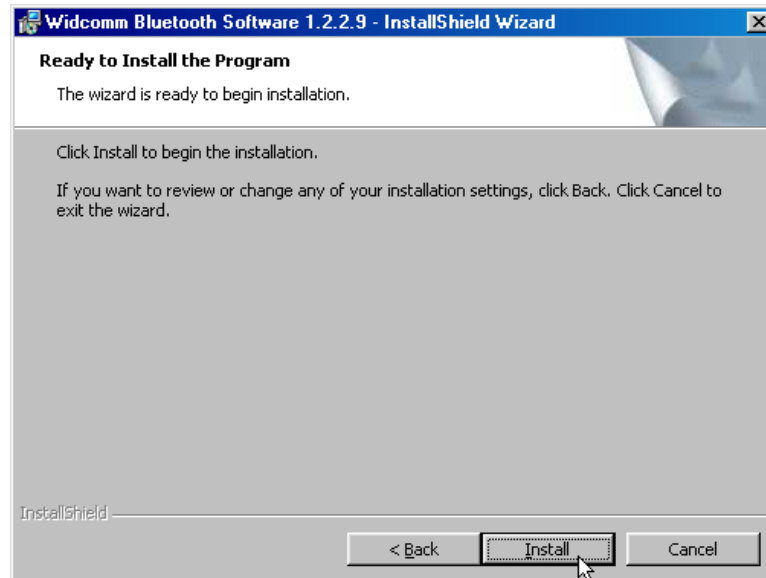


**Step5** The software default destination folder is located in: **C:/Program File/ Widcomm/ Bluetooth Software**. If you want to change the folder, please click “Change” to select a path you prefer.

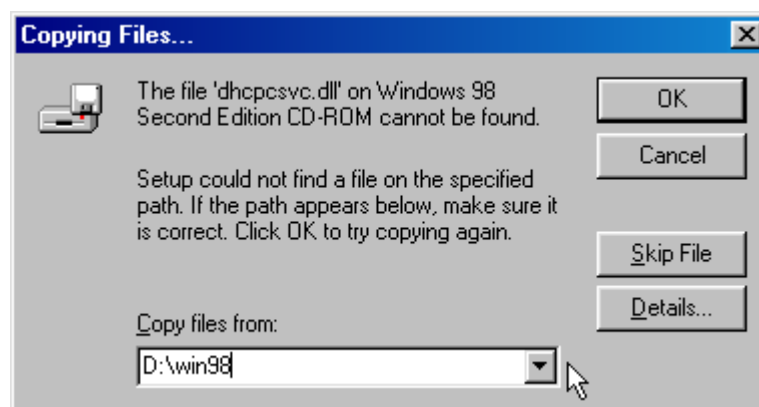


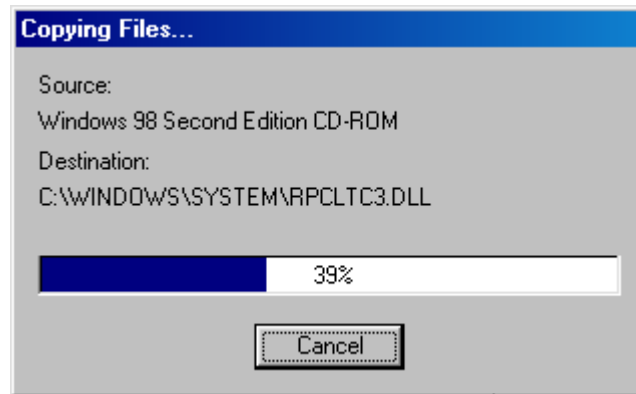


**Step6** After set the path, please click “Install” button to start installation program.

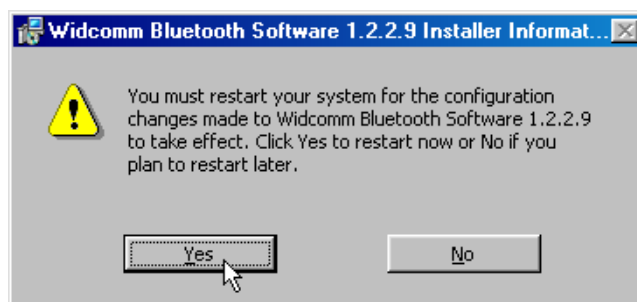
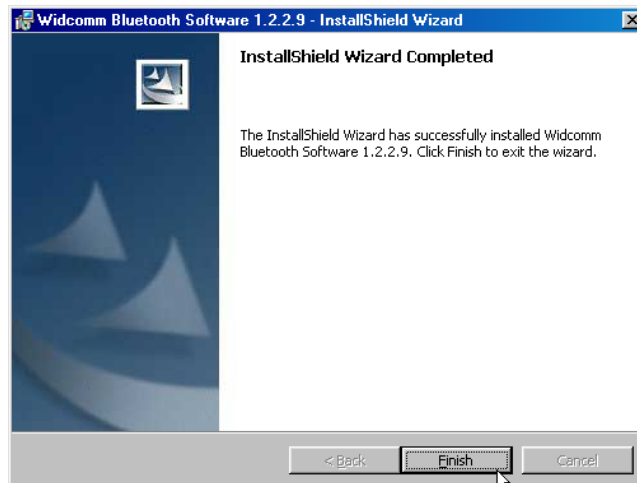


**Step7** During the processing of the Bluetooth software installation, it is possible to appear a dialog box to asking you the 98SE CD-ROM, please insert 98SE CD to your CD-ROM and fill in correct path, then click “OK” to continue.

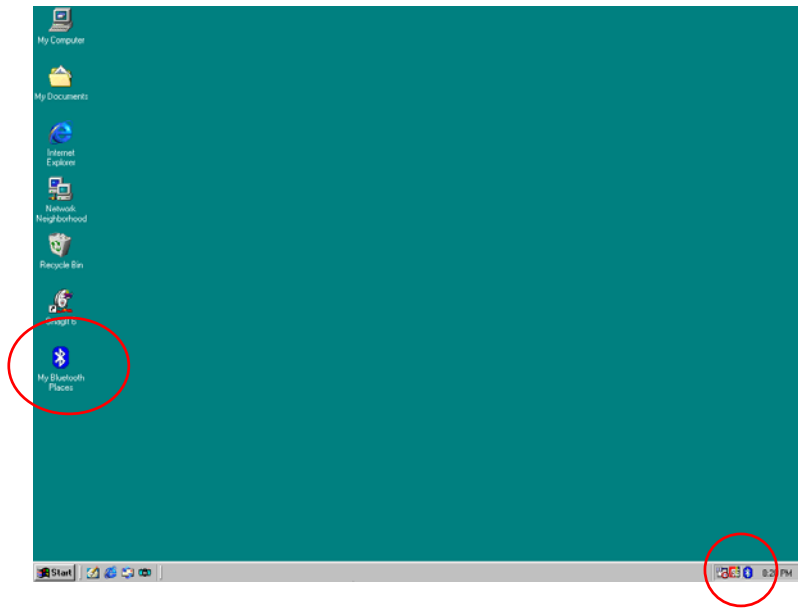




**Step8 Please reboot your system after the software installation is finished.**



**Step9 There are two Bluetooth icons appearing on the desktop and system tray after restart your computer.**



### 3 Hardware Installation

---

**Step1 Install the Bluetooth USB Dongle to desktop or laptop that within USB port.**



**Step2 You can use the Bluetooth USB Dongle at two computers or one pc and the other one Bluetooth device.**

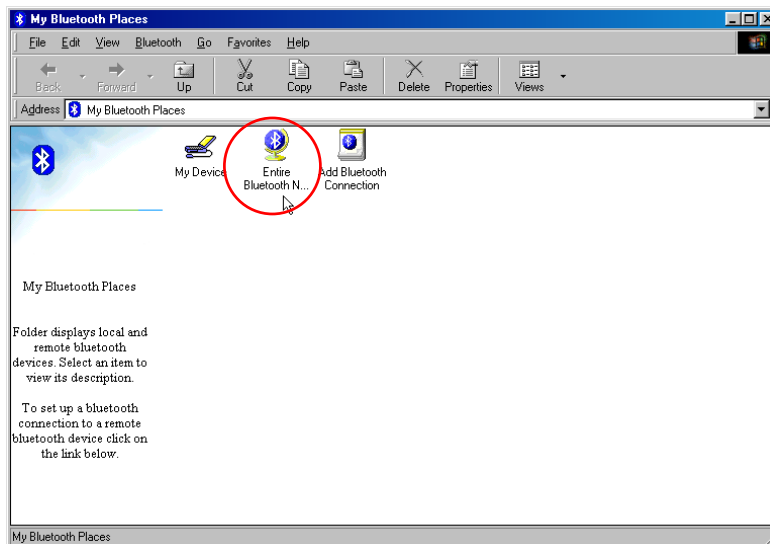
## 4 Function Description

---

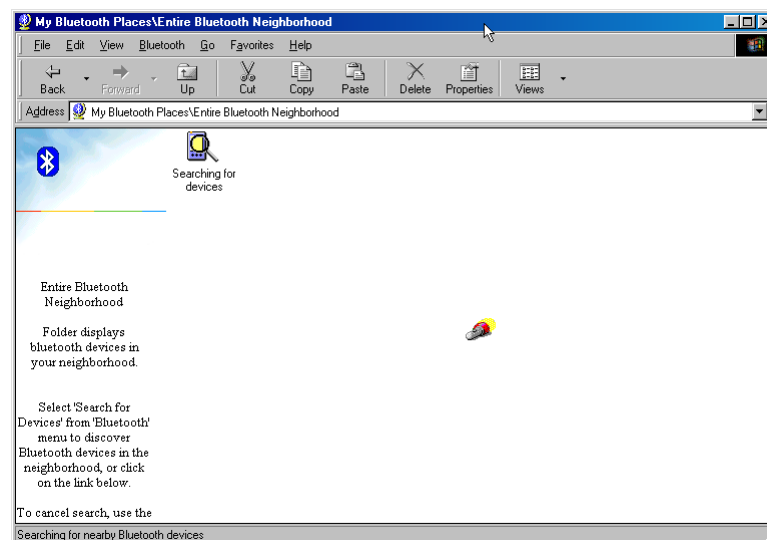
### 4.1 Bluetooth Serial Port

The Bluetooth Serial Port service allows two Bluetooth devices to establish a wireless connection through virtual communications ports and then use that connection as if it were a hardwired serial cable between the devices. The process as:

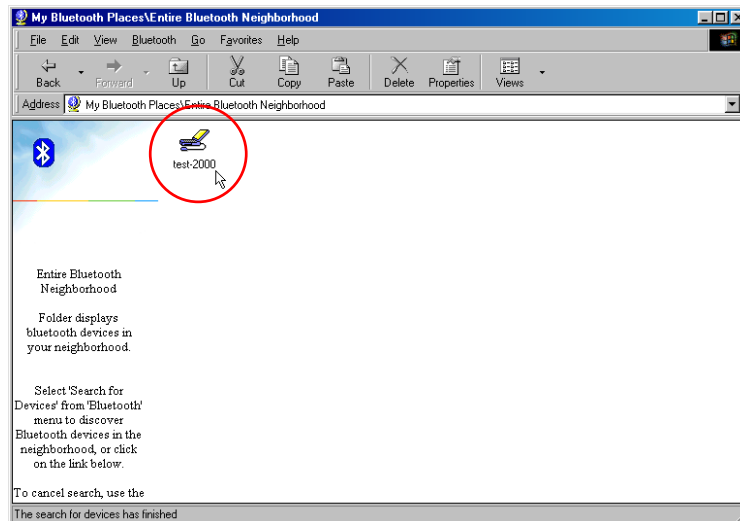
**Step1 At desktop, find the “My Bluetooth Places” icon, double click to enter and then click “Entire Bluetooth Neighborhood”.**



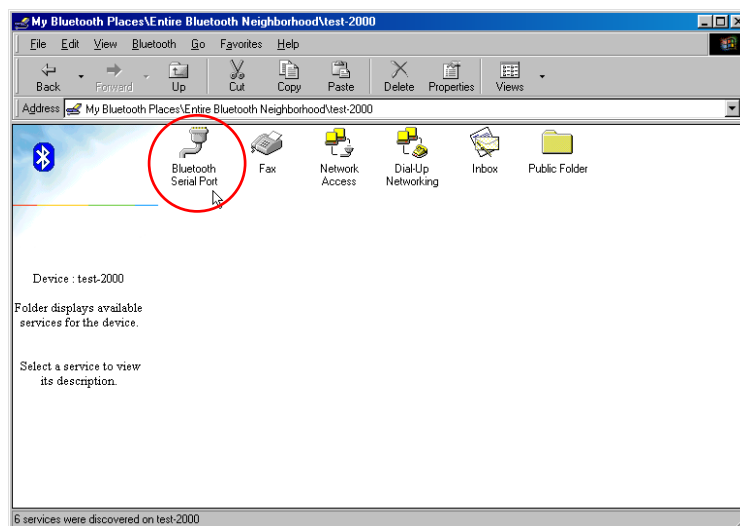
### Bluetooth Start to finding other devices in range



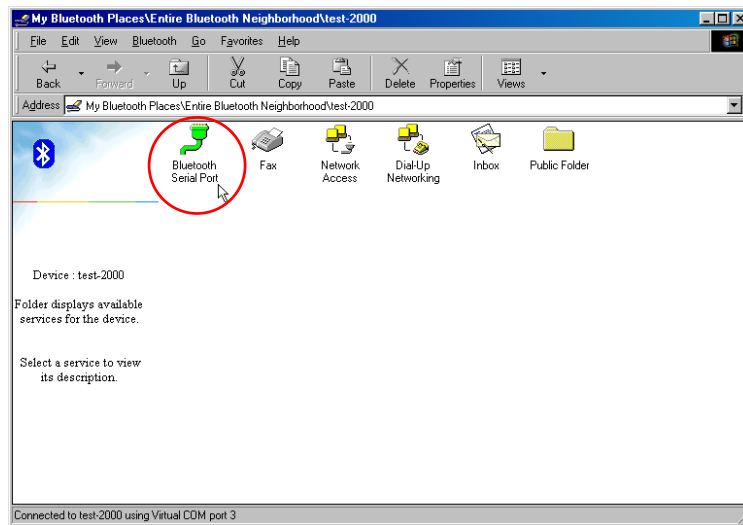
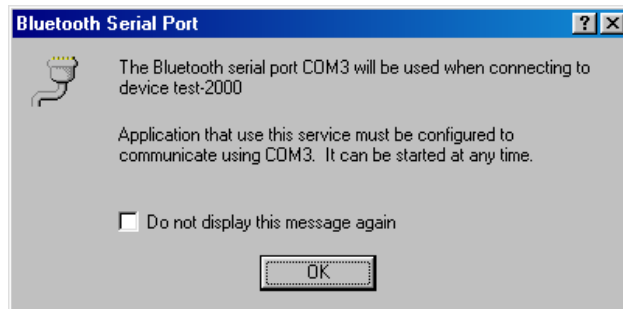
**Step2 Select the device you want to connect at the Bluetooth Neighborhood of Bluetooth Places. Double-click to enter the devices' sub-menu.**



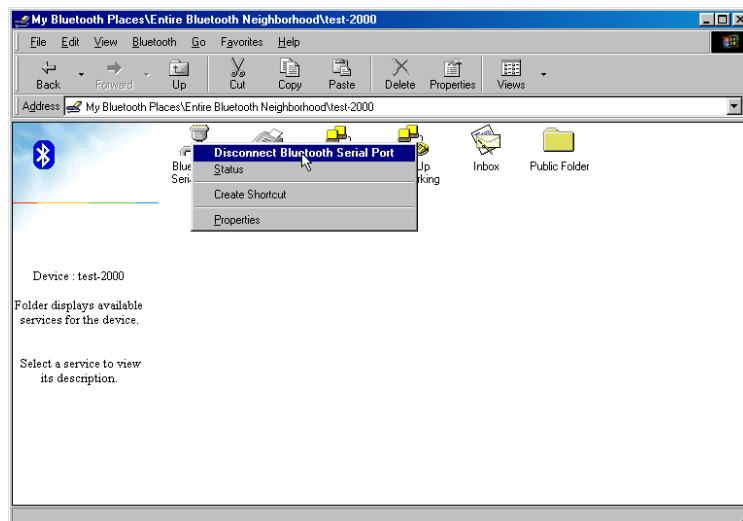
**Step3 All the services that the device provides will appear. Double-Click the "Bluetooth Serial Port" icon to start connection.**



**Step4 The icon of "Serial Port" will turn to be green after the Bluetooth Serial Port established.**



**Step5 If you want to disconnect the Bluetooth Serial Port, please right-click the green icon, and select “Disconnect Bluetooth Serial Port” tab to disconnect.**



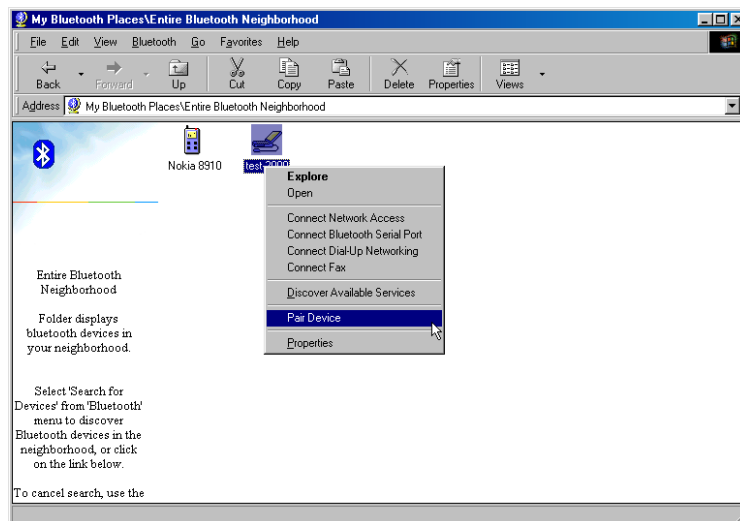
## 4.2 Dial-Up Networking

This service permits a Bluetooth client to use a modem that is physically connected to a different Bluetooth device. Possible Dial-Up Networking devices including:

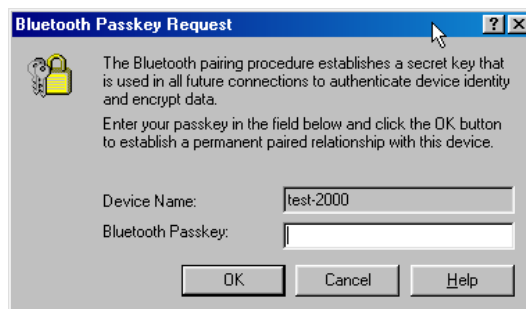
- Bluetooth-enabled computer with a modem connected
- Bluetooth-enabled mobile telephone.
- Stand-alone Bluetooth-enable modems.

To establish a Dial-up Networking session, please follow the process as below:

**Step1 Select the device you want to connect at the Bluetooth Neighborhood of Bluetooth Places. Right-click and select “Pair Devices” tab to pair before use this service.**

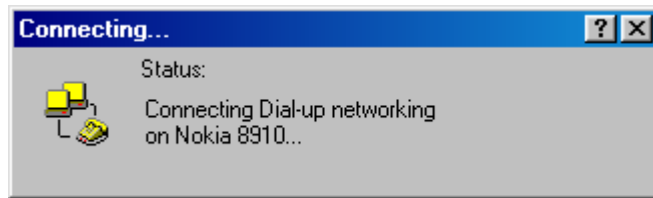


**Step2 A dialog box appear to asking you the “Bluetooth Passkey” to pairing, you have to fill in a code any answer the same code from another Bluetooth device to complete pairing process.**

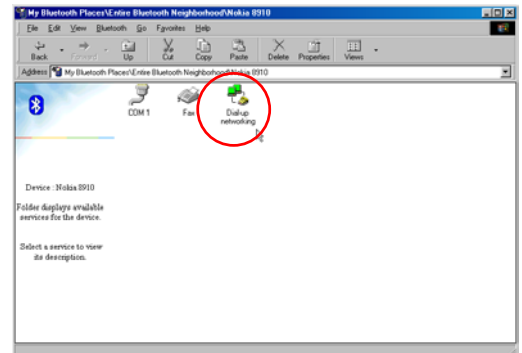
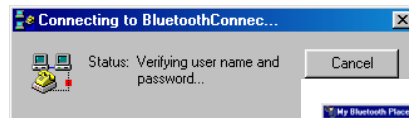
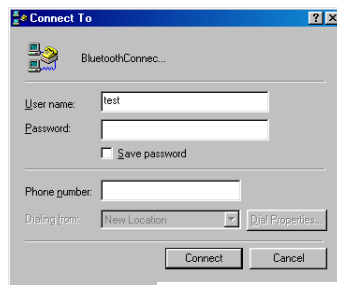




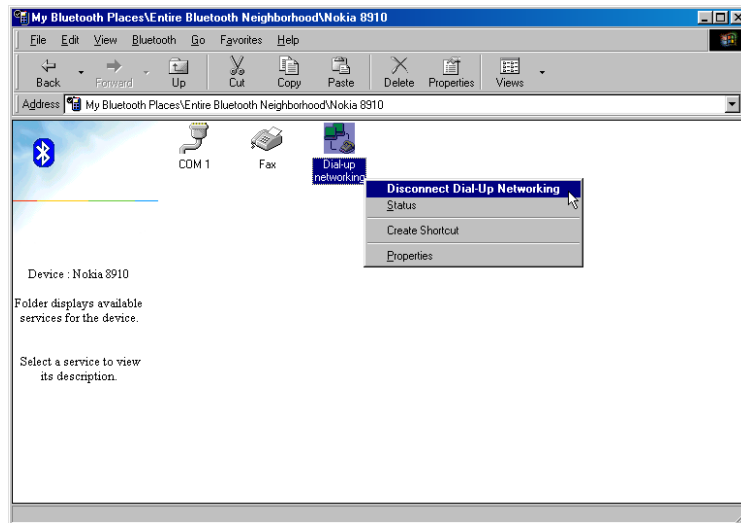
**Step3 Double-click to enter the devices' service items.  
Double-click again at "Dial-up networking" icon, system will tell you the status of connection.**



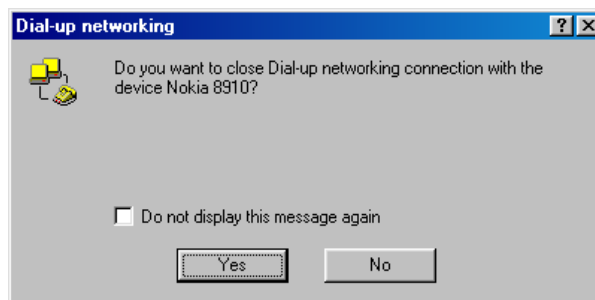
**Step4 A dialog box appears to asking the user ID and Password. Press the "connect" button after fill in the ID and password to start connecting. The "Dial-Up" icon will turn to be green color after the connection established.**



**Step5 If you want to disconnection, move you mouse to green "Dial-up networking" icon and right-click to select "Disconnect Dial-up Networking" tab to disconnect.**



**System will request your confirm to disconnect.  
Please click “Yes” to disconnect.**



### 4.3 Networking Access

This service permits a Bluetooth client to use a Local Area Network connection that is physically attached to another Bluetooth device.

The possible Network Access servers include:

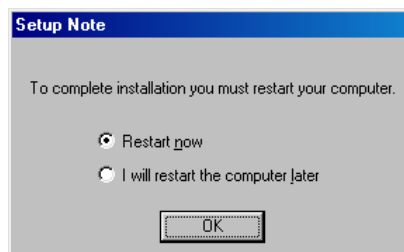
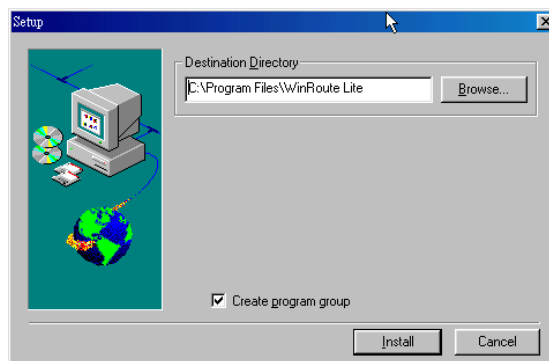
- Bluetooth-enabled computers that have a hardwired Ethernet connection.
- Stand-alone Bluetooth Network Access Points.

To enable the Networking Access service allow other Bluetooth devices, please setup the following configuration as below:

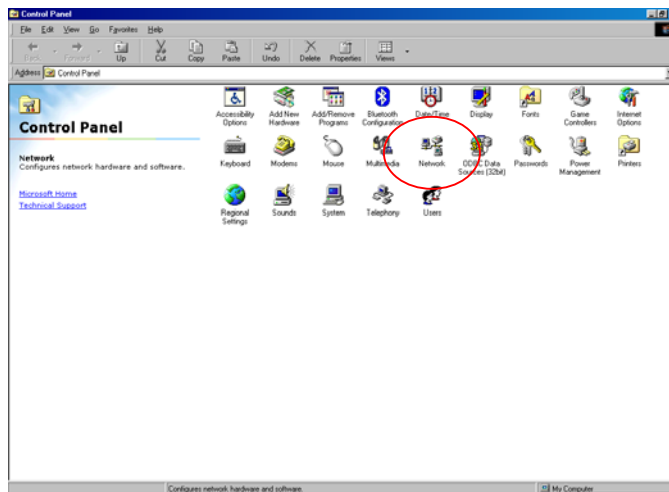
#### Step1 Install “WinRoute”

**Under Windows 98SE or Windows ME environment. You have to use “WinRoute Lite” software to act as a router. Then you can use this service correctly. You can get a downloadable trial version from: <http://www.tinysoftware.com>**

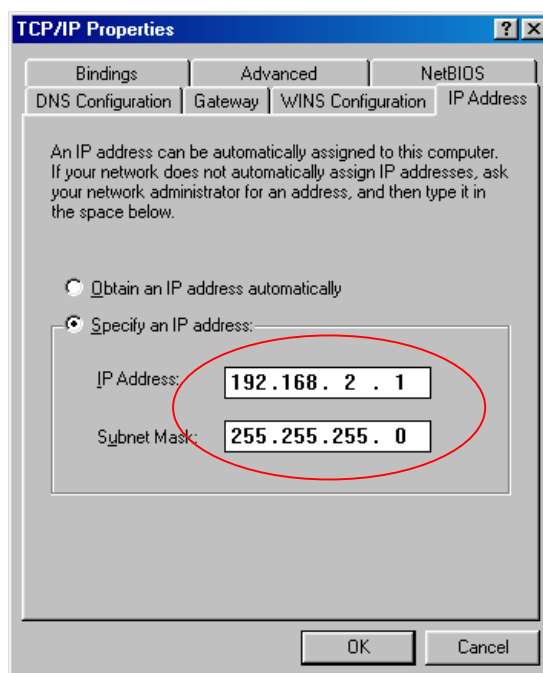
1. **Install WinRoute Lite software ( You can get a downloadable trial version from: <http://www.tinysoftware.com> ) , and then restart the computer.**



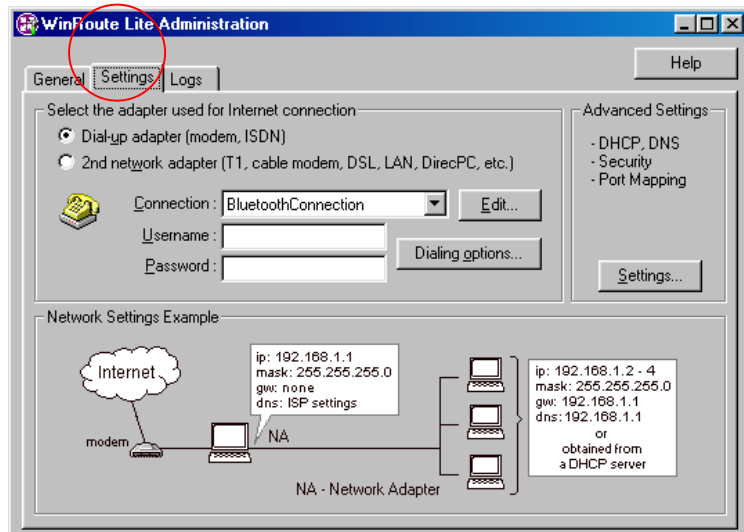
2. Select Windows Start/Control panel/Network to set "Bluetooth LAN Access Server Driver".



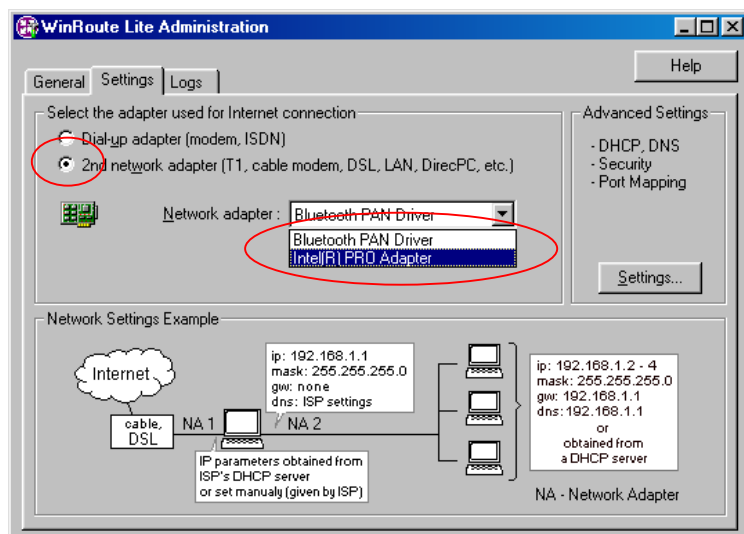
3. Select TCP/IP —> Bluetooth LAN Access Server Driver, press "IP address" tab, select specify IP address and enter a suggested value as :
- IP Address: 192.168.2.1
  - Subnet Mask : 255.255.255.0



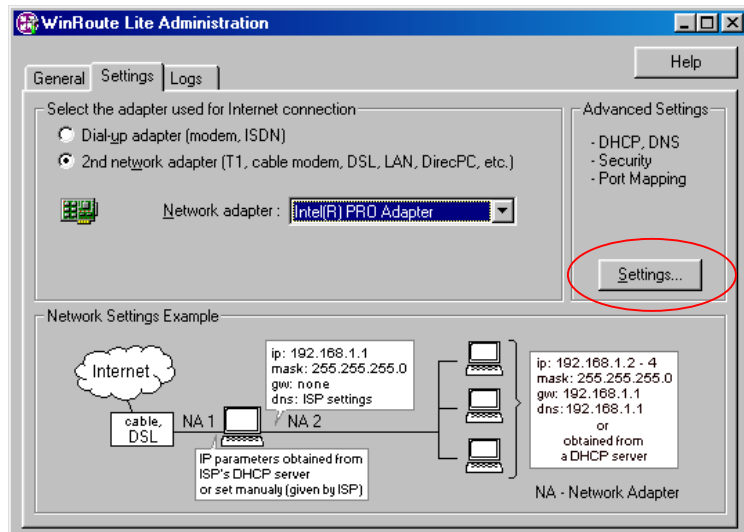
4. Click “OK” to restart the computer
5. After restart the computer, double-click the “WinRoute Lite Administration” icon in the windows system tray, and select “Setting” tab”



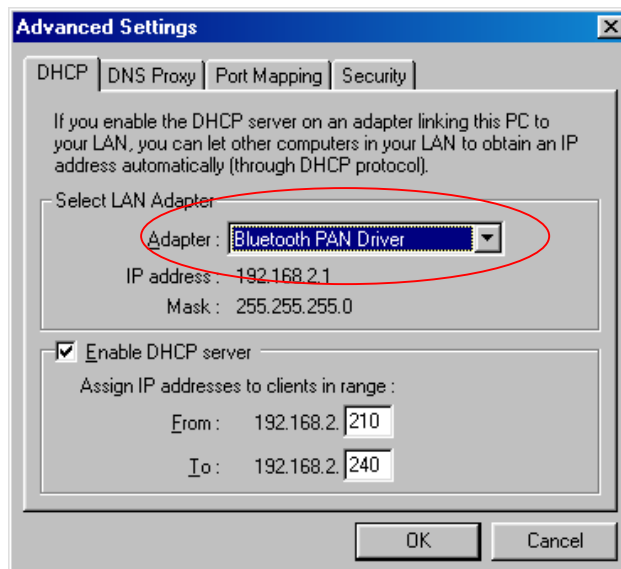
6. In the “Setting” tab, select 「 2<sup>nd</sup> networking adapter 」 , and choose one network adaptor other than Bluetooth PAN Driver from the Networking adaptor drop-down list.



7. Press “Setting...” button in the Advanced Setting section in the right side of same tab.



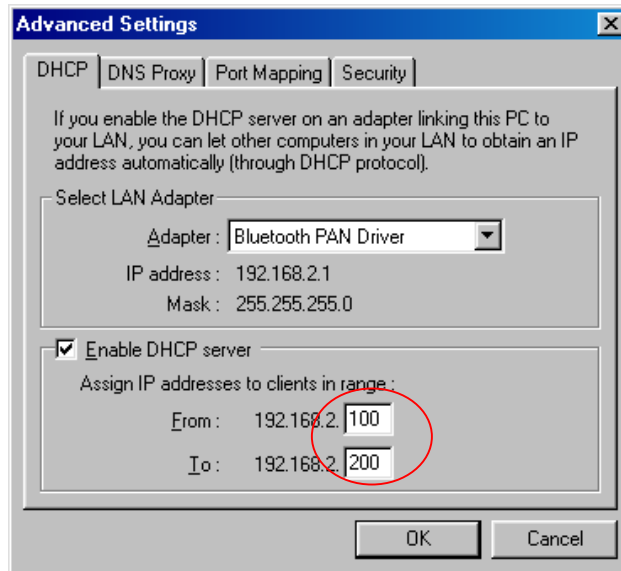
8. In the “DHCP” tab, select “Bluetooth PAN Driver” from the “Select LAN Adapter” drop-down list.



9. Select “Enable DHCP server”, and fill in the IP address range fields:

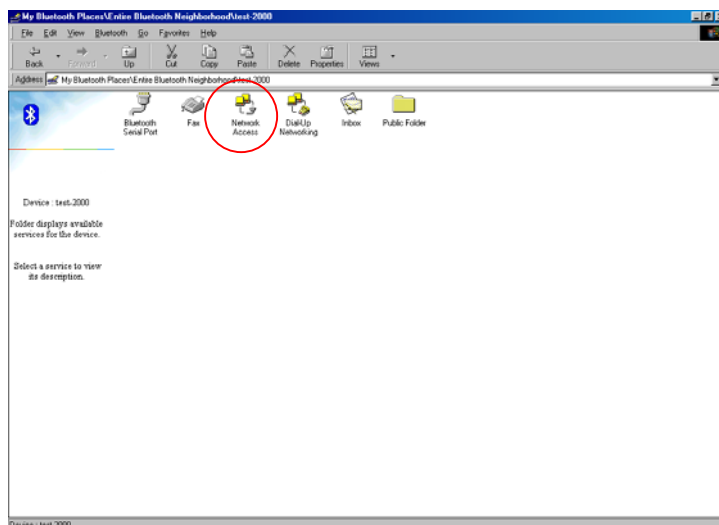
From: 192.168.2.100

To: 192.168.2.200

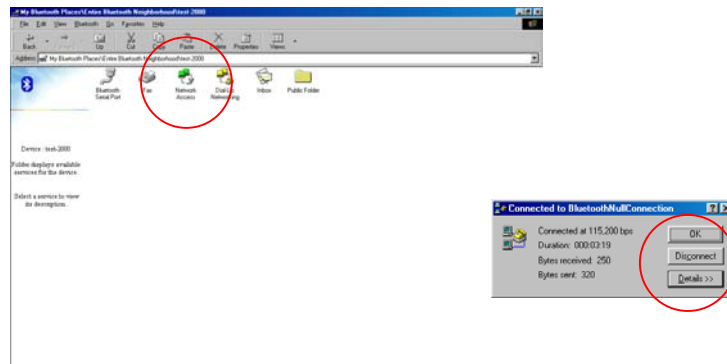


10. Click “OK” to complete WinRoute Lite setting.  
Please minimize the “WinRoute Lite” application,  
don’t close it.

Step2 Select the device you want to connect at the Bluetooth Neighborhood of Bluetooth Places. Double-click to enter the devices’ service items.



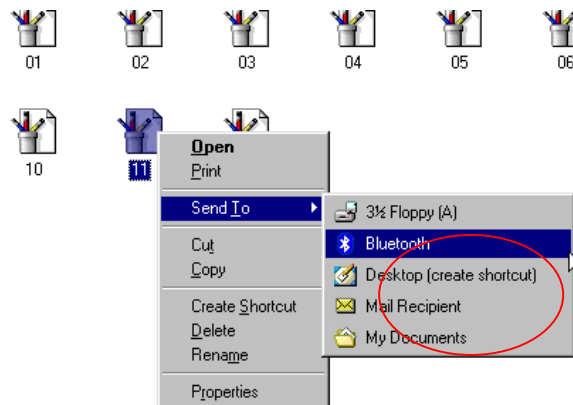
**Step3** When the connection is established, the “Network Access” icon will turn to be green color. And the system tray will show the status of connection. You can double-click the icon when you want to disconnect a Network Access service.



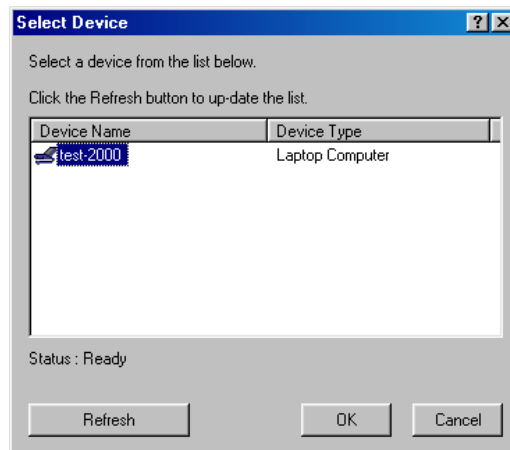


#### 4.4 File Transfer

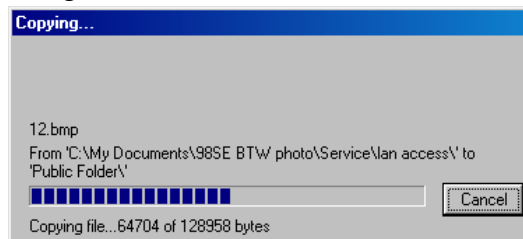
This service allows one Bluetooth device to perform file operations on the default File Transfer directory (and the folders and files it contains) of another Bluetooth device. Select one file you want transfer and right-click to choose “Send to” from the pop-up menu to transfer file.



At “Select Device” window, choice one device you want to transfer the file to.



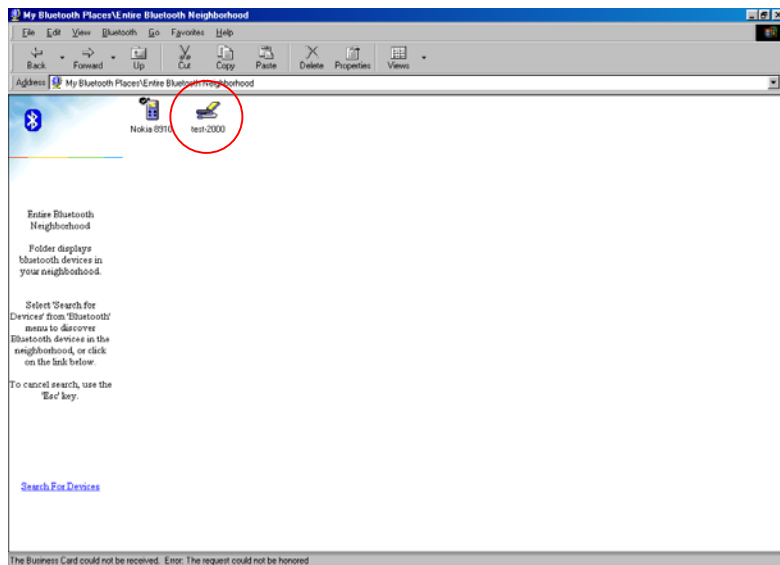
Click “OK” to starting transfer.



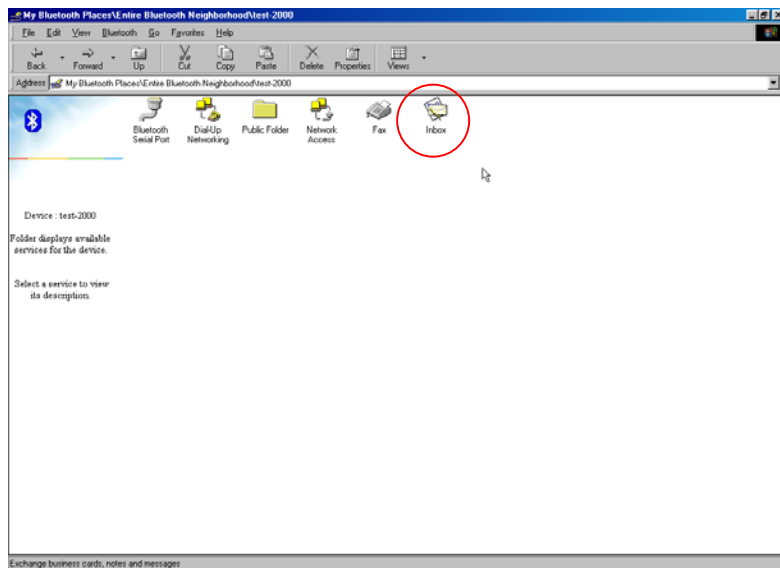
#### 4.5 Information Exchange

This service provides a way to send and receive Microsoft Outlook items to and from another Bluetooth device, such as: Business cards, Calendar entries, Notes and Messages etc.

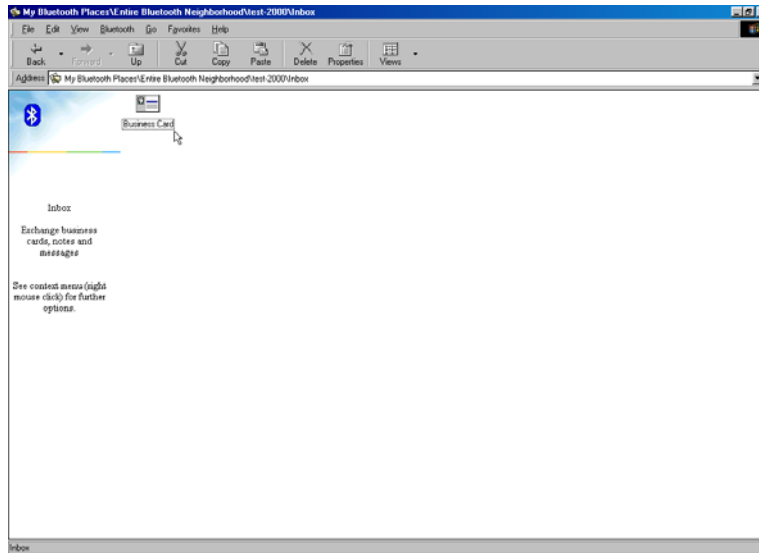
##### **Step1 Select the device you want to connect at the Bluetooth Neighborhood of Bluetooth Places.**



##### **Step2 Double-click to enter the devices' service items. And select "Inbox" icon to entry this service.**



**Step3 At “Inbox” service, you can see those Business cards, Calendar, Notes and Messages that the device have. Right-click to select action you want: Send, Receive or Exchange.**



#### 4.6 Information Synchronization

This service provides information synchronization between two Bluetooth devices (e.g., a PIM database). Microsoft Outlook is the only PIM supported in this release of BTW. Only Outlook's default contacts folder is synchronized. Items in sub-folders are not synchronized.

You can follow the process as below to use Information Synchronization:

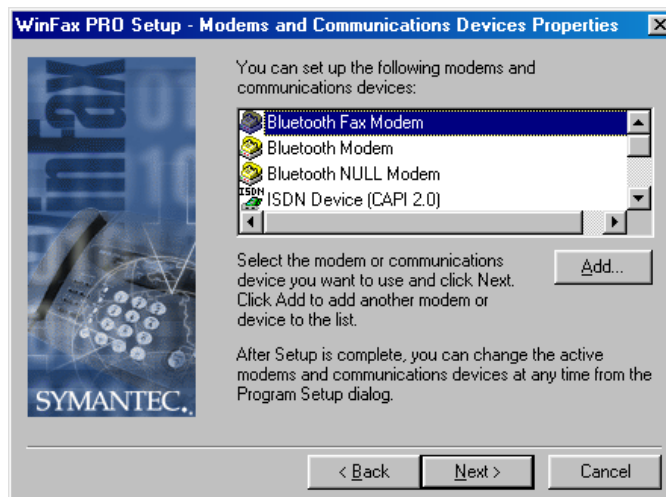
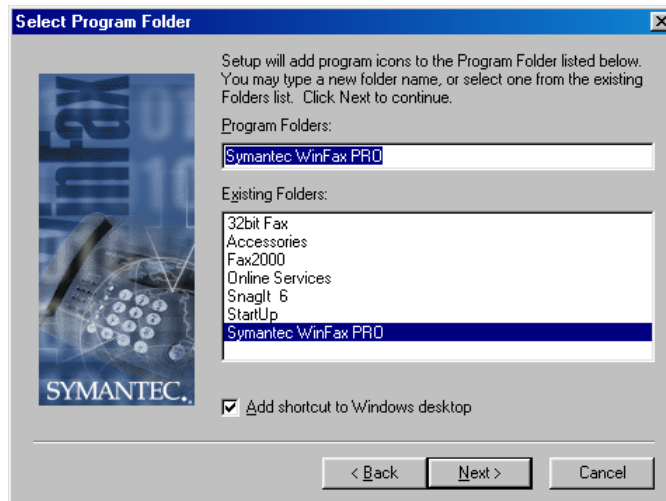
**Step1 Select the device you want to connect at the Bluetooth Neighborhood of Bluetooth Places. Double-click to enter the devices' service items.**

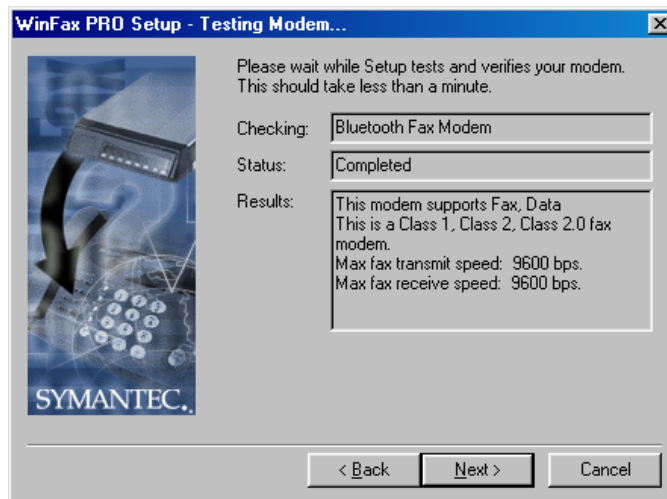
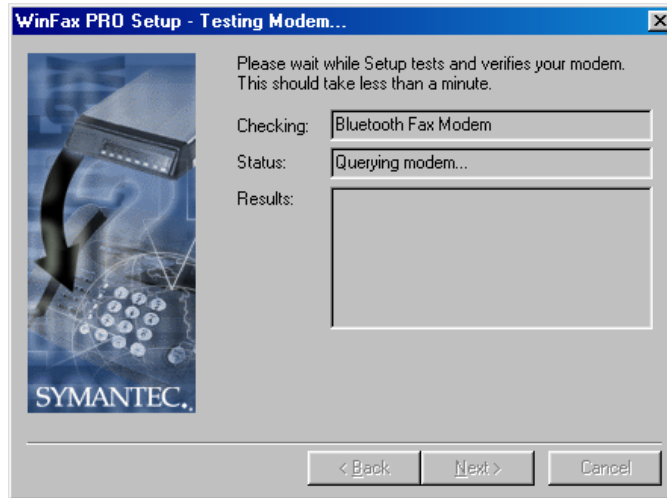
**Step2 Double-click at "Information Synchronization" icon to start synchronization. There is a dialog box display synchronization progress, when the process is complete, indicates that synchronization has successfully completed. And the connection will close automatically when synchronization is complete.**

## 4.7 Fax

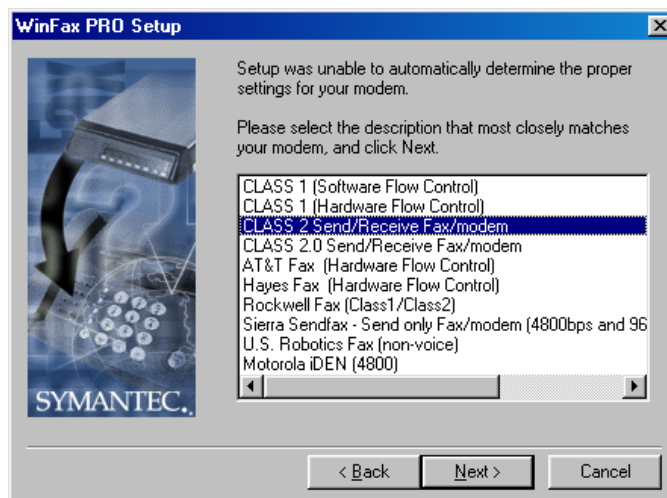
The Fax service allows a Bluetooth client to wirelessly send a fax using a device that is physically attached to a Bluetooth server. Using this service, you may have to use PC fax application such as WinFax. Hereunder is describe by “WinFax Pro”:

**Step1 Install “WinFax”, At “Modem and Communications Devices Properties” tab, select “Bluetooth Fax Modem” and click ”Next”, system will try to connect with this modem to test at first time setting.**

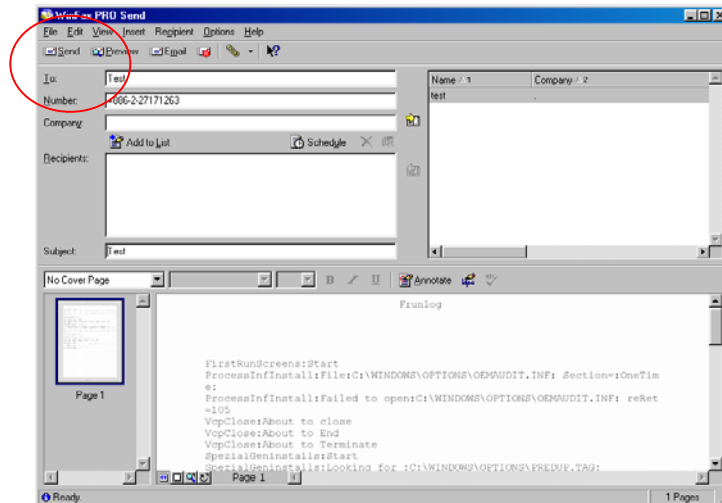




### Select Class 2 Send/Receive Fax/Modem



**Step2 Open a document that you want to fax, select “Print...” tab. The “Fax” application will appear, fill in the number you want to fax to, and press “Send” bottom**



**Bluetooth Dongle will find the “Bluetooth Fax Modem” automatically. And dial-up to fax.**

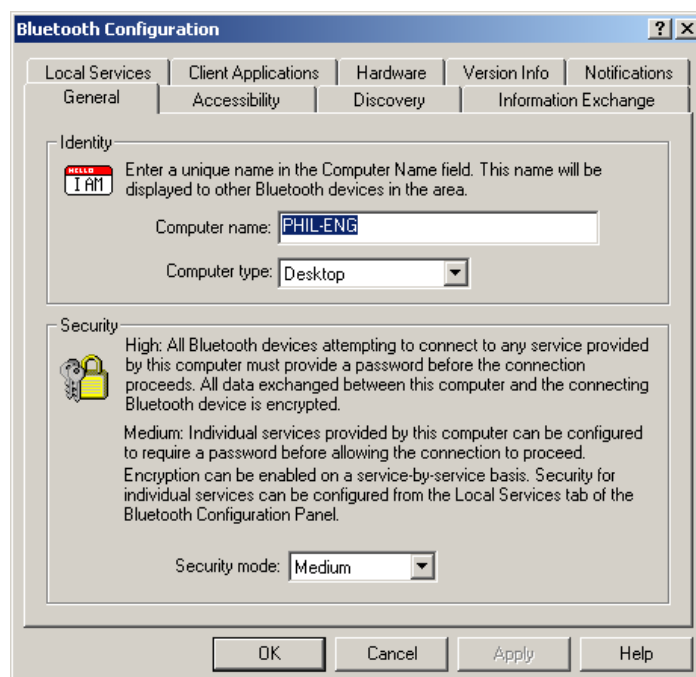
## 5 Bluetooth Software Configuration

---

After install the Bluetooth software( BTW ), you can see the Bluetooth icon at windows system tray after restart the computer. Right-click the icon and select Setup and then Configuration from the submenu to settings for Bluetooth services, hardware and security and for event notification that describe as follows:



### 5.1 General





- Identity

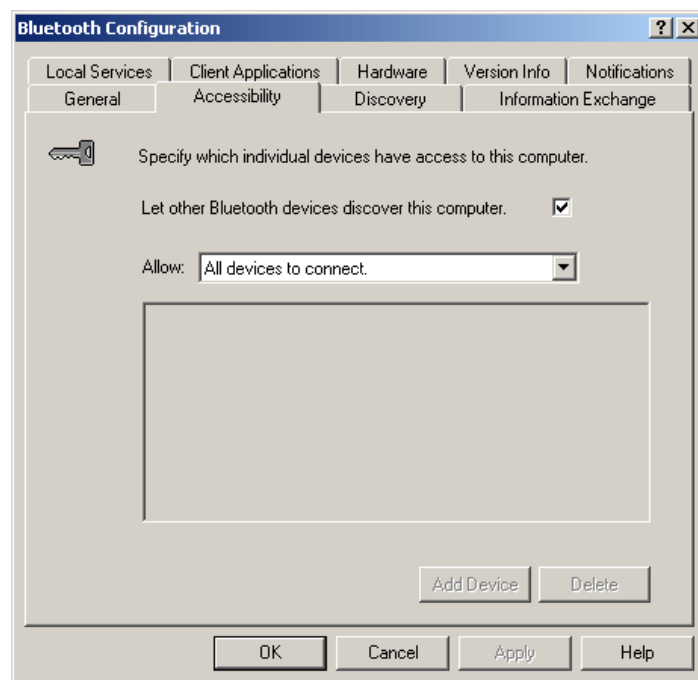
In this section, you can set your computer name at “Computer Name” column to introduce this computer to others Bluetooth devices. A valid computer name is between 1 to 247 characters.

Besides, you can select the type of your computer type: Desktop or Laptop.

- Security

In this section, there are two degrees to choose: Medium or High.

## 5.2 Accessibility



- You can let other Bluetooth devices discover your device if the button “Let others Bluetooth devices discover this computer” is selected.

- There are four configuration at this option in drop-down list to selected:

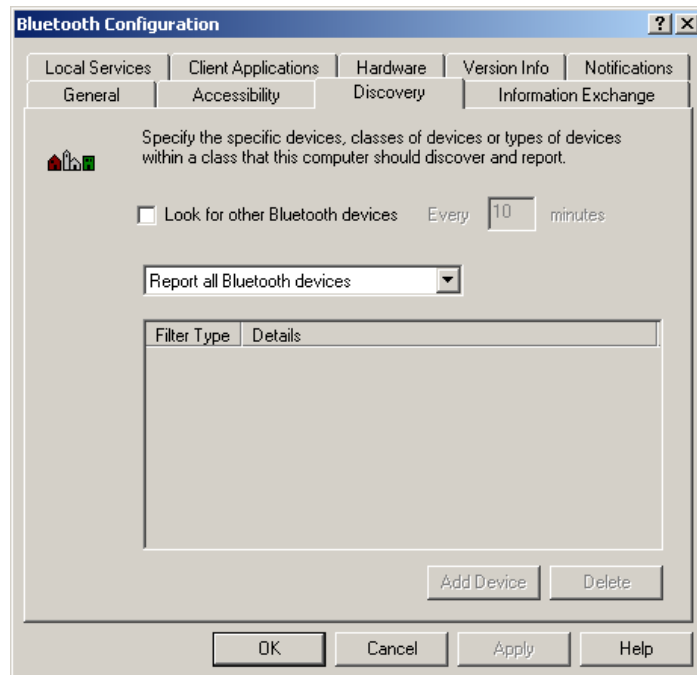
- ◆ **No devices to connect**

**Your computer can still connect other Bluetooth devices, but others Bluetooth devices cannot connect your**

**computer or use all services.**

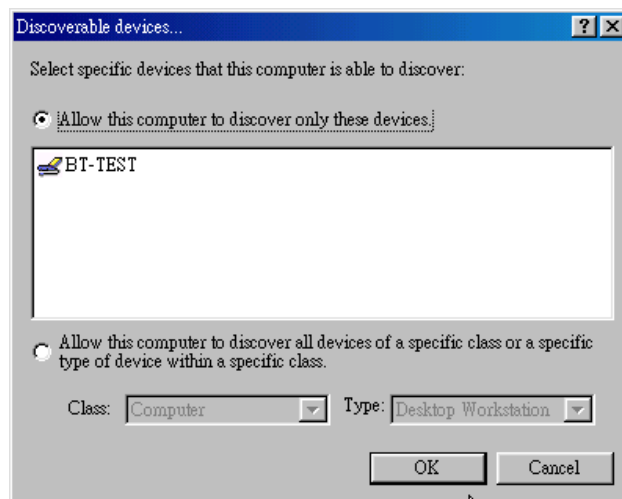
- ◆ **All devices to connect**  
Default setting, it allow all Bluetooth devices connect to this computer.
- ◆ **Only paired devices to connect**  
Only the devices, which have been paired, are allows connecting this computer.
- ◆ **Only devices listed below to connect**  
Only the devices, which list in “Add Devices” box, are allows connecting this computer

### 5.3 Discovery

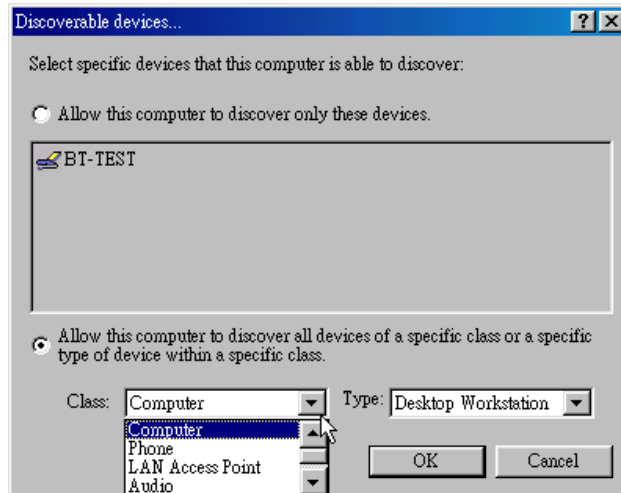


- The settings determine whether your computer looks for other Bluetooth devices automatically and how often it looks and what type of devices it looks for. To perform a periodic search for devices: when "Look for other Bluetooth devices" is selected, BTW automatically searches for devices every “X” minutes. X is an integer from 1 to 60.
- There are two modes on drop-down list:

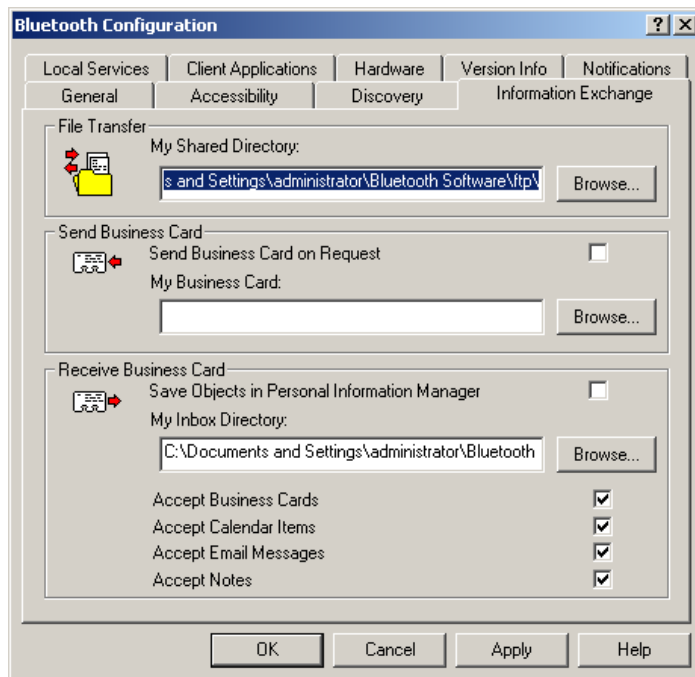
- ◆ Report all Bluetooth devices – its system default option, the Bluetooth Neighborhood windows will display all devices found by your computer.
- ◆ Report only selected Bluetooth devices – you can set filter by pressing “Add device” button.
  - a. Allow this computer to discover specific devices  
Check the “Allow this computer to discover specific devices” button is selected, and pressing OK after selected the Bluetooth device that show in filter list dialog box.



- b. Allow this computer to discover specific or type of devices within a class  
Check the “Allow this computer to discover specific or type of devices within a class” button is selected, and pressing OK after selected others Bluetooth devices’ type.



## 5.4 Information Exchange

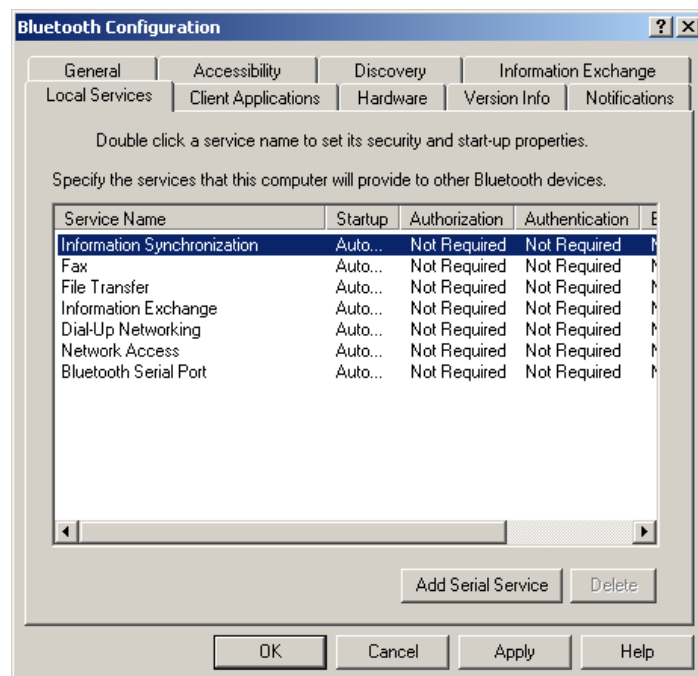


- At the column of File Transfer, Click the Browse button and navigate to the directory that will be used as My Shared
- Select the "Send Business Card on Request" option to allow remote devices to obtain your business card. Click the Browse

button and navigate to the directory that contains your business card.

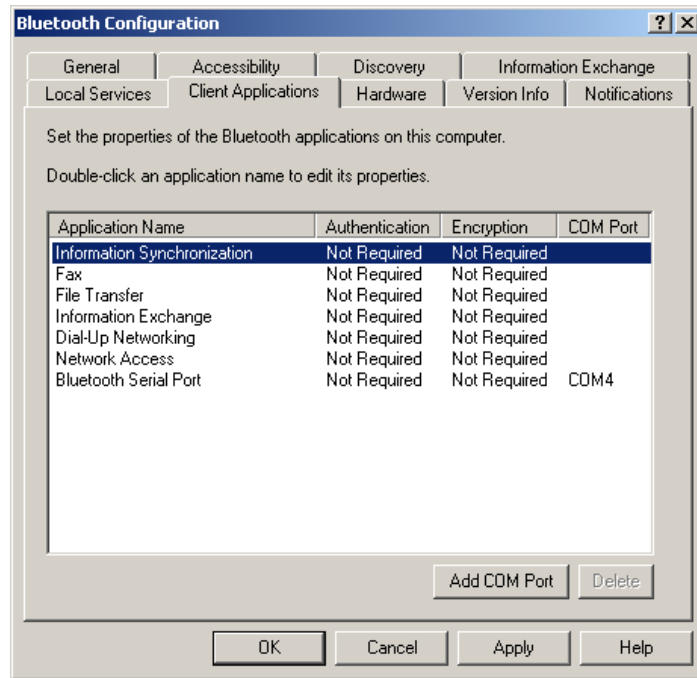
- Select the "Save Object in Personal Information Manager" option to save incoming objects directly in the PIM, and then click the Browse button to navigate to the directory where they should be saved.

## 5.5 Local Service



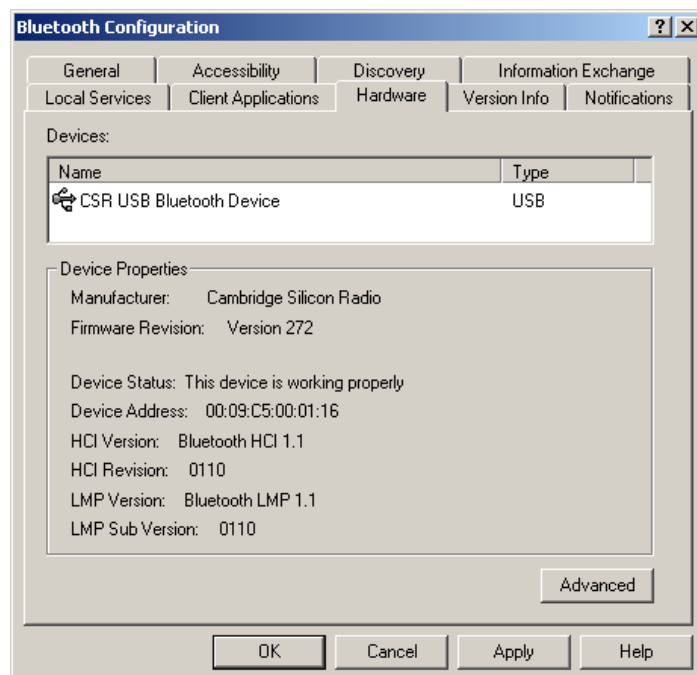
- You can choose the configuration of the services provided by your computer to remote devices. And add and delete user-defined serial services.

## 5.6 Client Application



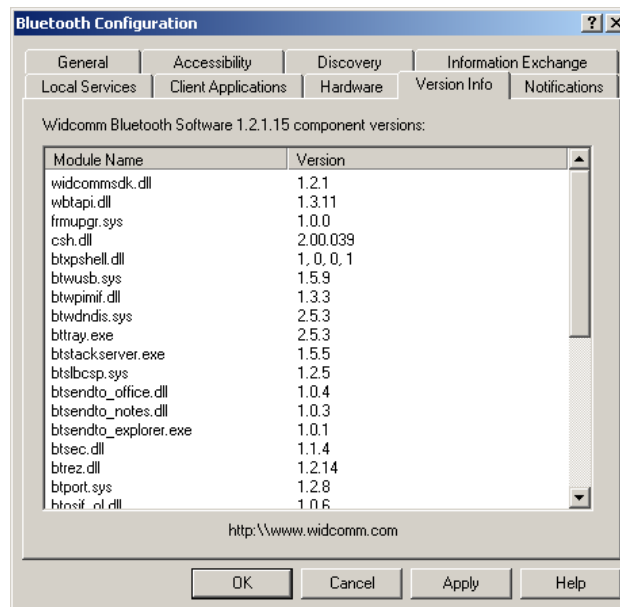
- This tab allows you to set Bluetooth Devices' security, application name or add/delete a user-defined COM port.

## 5.7 Hardware



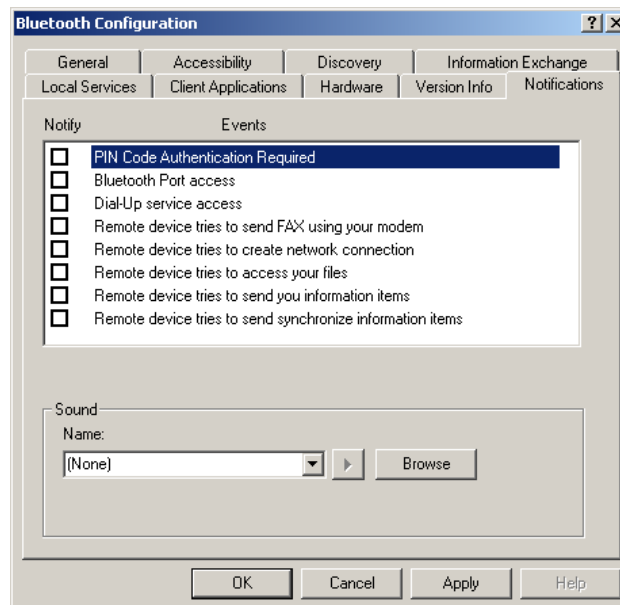
- This tab shows information of Bluetooth Device in local computer. You can change transmission power at “Advance” setting.

### 5.8 Version Info



- Shows version number information.

### 5.9 Notification



- You can choice sound notice for each service, Just dial “Browser” bottom to set sound.

## 6 Others

---

### 6.1 Mac user reference

- This product provides the function of file transmission between two Mac PC via Bluetooth or dial-up to access Internet via Bluetooth mobile phone.
- Try to download the application software here: [www.apple.com](http://www.apple.com) , and refer to the user guide.



## 7 Trouble Shooting

---

- 7.1 Why my software Installation can't complete?
- ◆ **During the software installation, please turn all the application off to keep BTW installation correctly.**
  - ◆ **Inspect if Bluetooth Driver CD is damaged.**
- 7.2 Why I can't find any service at My Bluetooth Places\My Devices?
- ◆ **Check your Bluetooth USB Dongle is set-up correctly.**
  - ◆ **Make sure that your USB Port is workable.**
- 7.3 Can't find any others Bluetooth devices in the "Bluetooth Neighborhood" or can't find any services on the devices which be found.
- ◆ **Make sure the others Bluetooth devices are power on and workable.**
  - ◆ **Make sure the remote device is within range.**
  - ◆ **Check the others Bluetooth devices provide the service you looking for.**
- 7.4 Why I can't dial-up to access Internet via my mobile phone?
- ◆ **Make sure your mobile phone build-in Bluetooth system.**
  - ◆ **Do pair process before using this service.**
  - ◆ **Make sure your telecom operator offer GPRS or data transfer service.**
  - ◆ **Check you dial-up number if it correct?**
- 7.5 Why I can't access network via another Bluetooth devices?
- ◆ **Make sure remote Bluetooth device provide "Access Internet" service.**
  - ◆ **Make sure remote Bluetooth device provide "Internet Sharing" function.**
  - ◆ **If remote Bluetooth device perform Win98SE OS. Please install an Internet routing software such as "WinRoute Lite".**

- ◆ **Check the TCP/IP setting is correct.**

7.6 I can't fax out via my Bluetooth mobile phone.

- ◆ **Make sure you have installed a fax application in your computer (Such as WinFax).**
- ◆ **Make sure your computer and Bluetooth mobile phone connect correctly.**
- ◆ **Make sure your fax application using "Bluetooth Fax Modem".**
- ◆ **Make sure your telecom operator offer this service.**

# Notices

## **FCC-B Radio Frequency Statement**

**This equipment has been tested and found to comply with the limits for a class B digital device, pursuant to part 15 of the FCC rules.**

**These limits are designed to provide reasonable protection against harmful interference when the equipment is operated in a commercial environment. This equipment generates, uses and can radiate radio frequency energy and, if not installed and used in accordance with the instruction manual, may cause harmful interference to radio communications. Operation of this equipment in a residential area is likely to cause harmful interference, in which case the user will be required to correct the interference at his own expense.**

### **Notice 1**

**The changes or modifications not expressly approved by party responsible for compliance could void the user's authority to operate the equipment.**

### **Notice 2**

**Shielded interface cable and A.C. power cord, if any, must be used in order to comply with the emission limits.**

### **FCC RF Radiation Exposure Statement:**

- 1. This Transmitter must not be co-located or operating in conjunction with any other antenna or transmitter.**
- 2. This equipment complies with FCC RF radiation exposure limits set forth for an uncontrolled environment. This equipment should be installed and operated with a minimum distance of 20 centimeters between the radiator and your body**