

### APPENDIX A1 TEST SAMPLE PHOTOGRAPHS

CC61 Host



CC61 Host

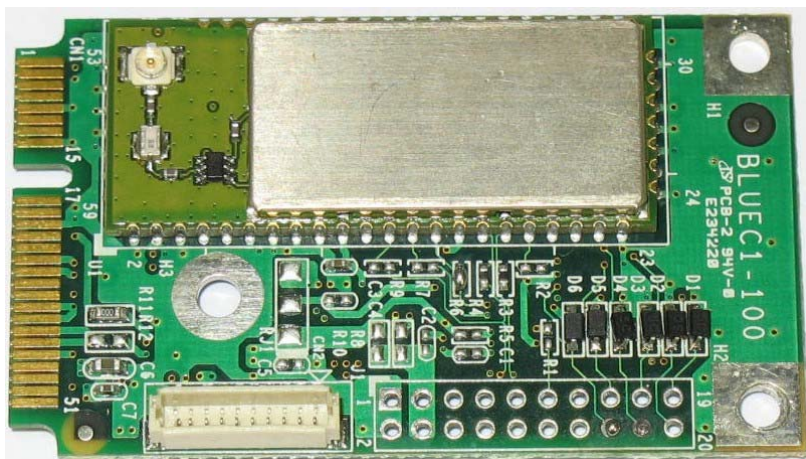


Accredited for compliance with ISO/IEC 17025. The results of the test, calibrations and/or measurement included in this document are traceable to Australian/national standards. NATA is a signatory to the ILAC Mutual Recognition Arrangement for the mutual recognition of the equivalence of testing, calibration and inspection reports.

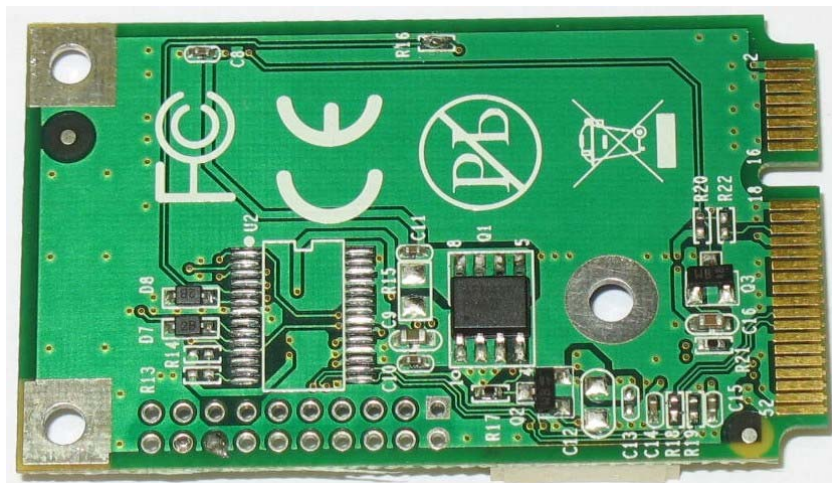
**This document shall only be reproduced in full, with the exception of the certificate on p3**

### APPENDIX A2 TEST SAMPLE PHOTOGRAPHS

Model: WT41E-HCI3 – Bluetooth Module  
Front



Back

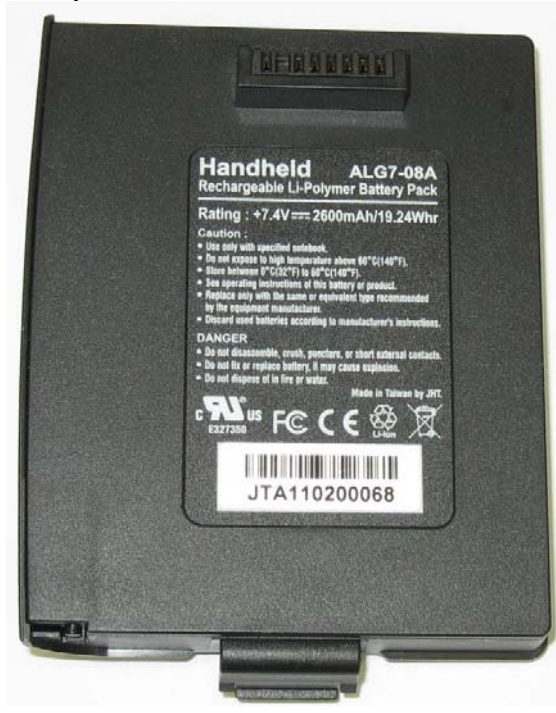


Accredited for compliance with ISO/IEC 17025. The results of the test, calibrations and/or measurement included in this document are traceable to Australian/national standards. NATA is a signatory to the ILAC Mutual Recognition Arrangement for the mutual recognition of the equivalence of testing, calibration and inspection reports.

**This document shall only be reproduced in full, with the exception of the certificate on p3**

### APPENDIX A3 TEST SAMPLE PHOTOGRAPHS

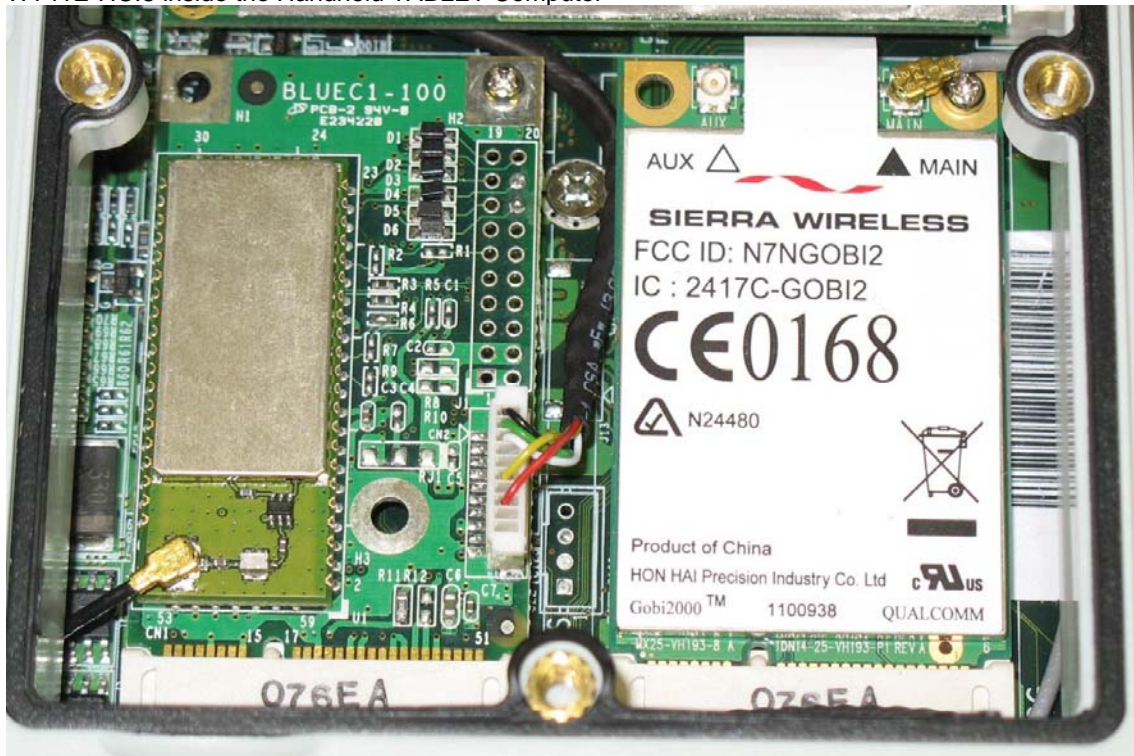
Battery 1



Battery 2



WT41E-HCI3 inside the Handheld TABLET Computer

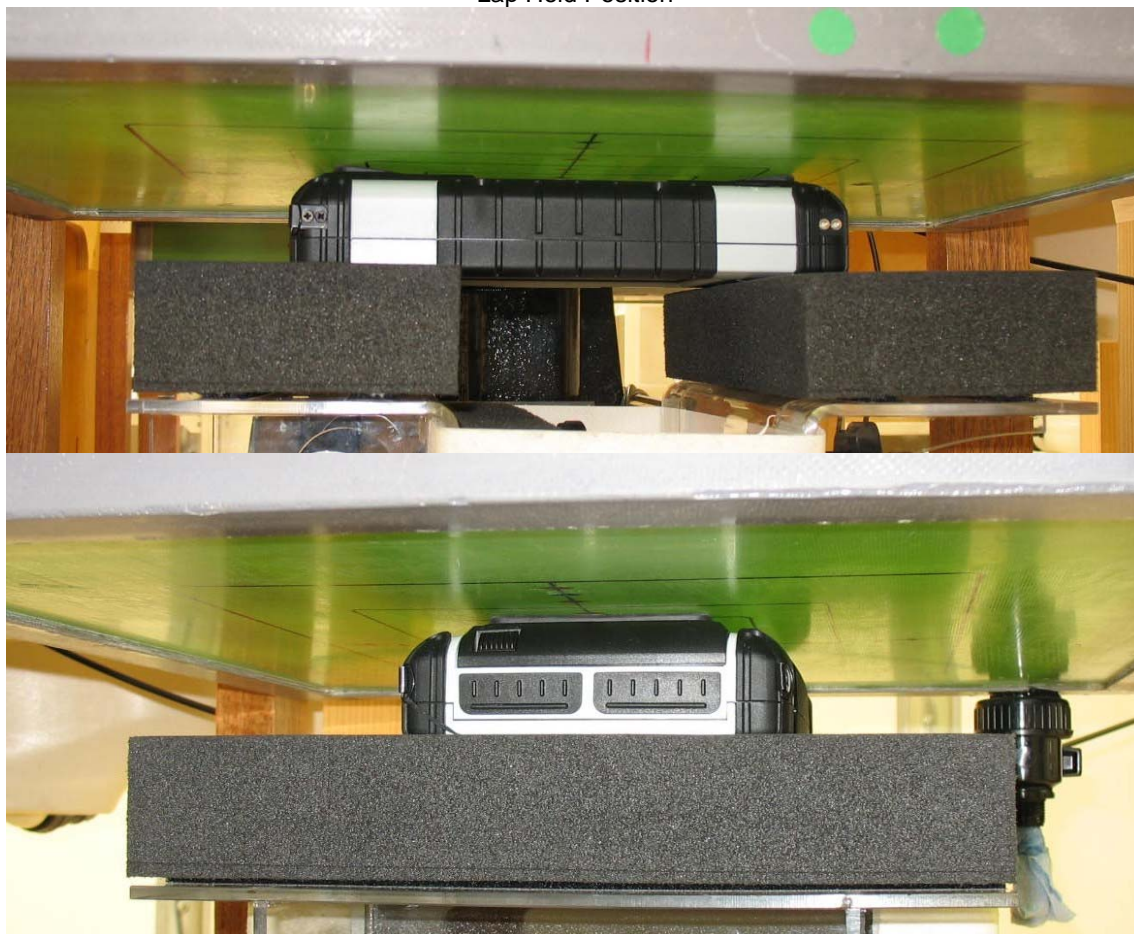


Accredited for compliance with ISO/IEC 17025. The results of the test, calibrations and/or measurement included in this document are traceable to Australian/national standards. NATA is a signatory to the ILAC Mutual Recognition Arrangement for the mutual recognition of the equivalence of testing, calibration and inspection reports.

This document shall only be reproduced in full, with the exception of the certificate on p3

### APPENDIX A4 TEST SETUP PHOTOGRAPHS

Lap Held Position

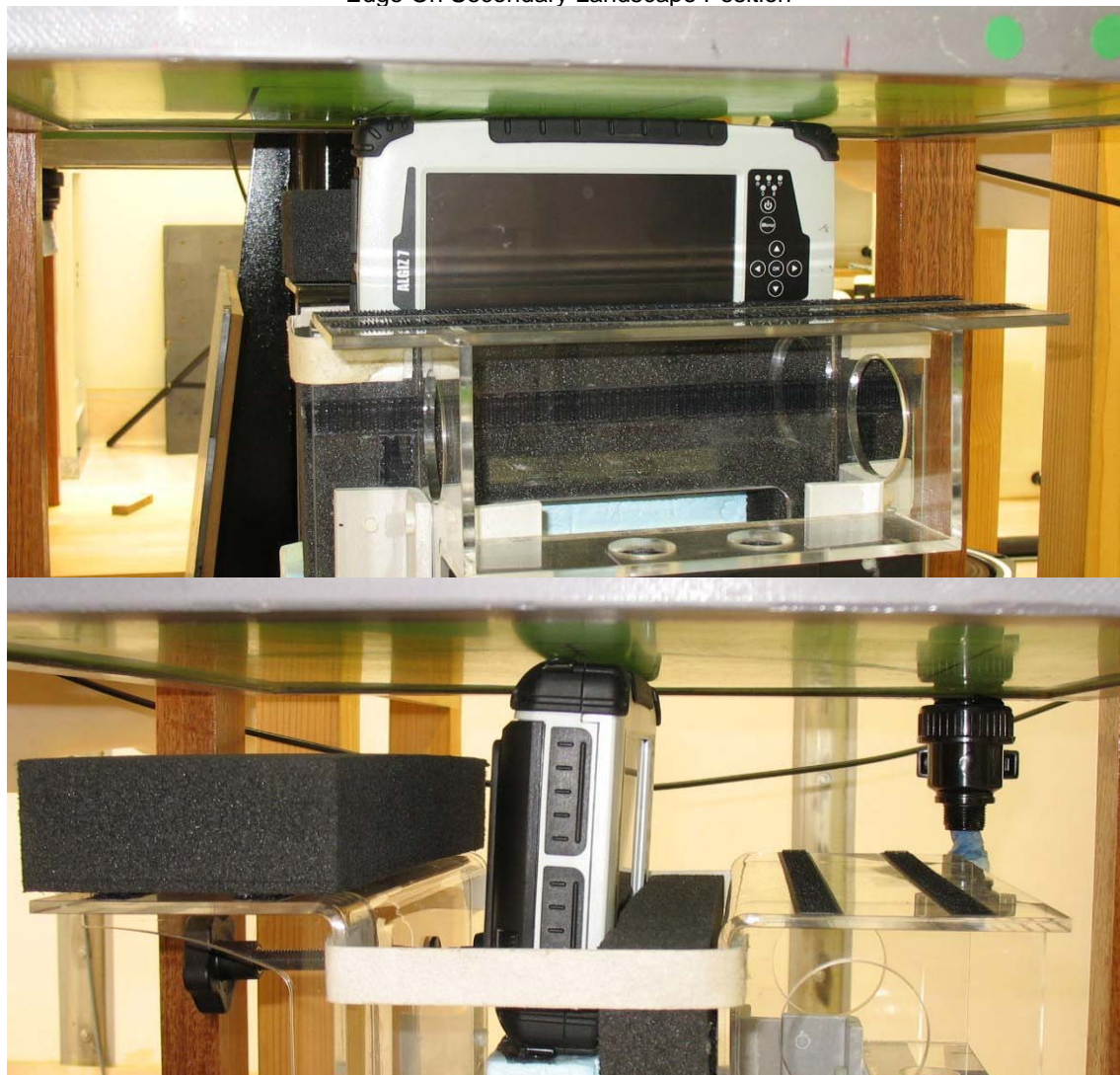


Accredited for compliance with ISO/IEC 17025. The results of the test, calibrations and/or measurement included in this document are traceable to Australian/national standards. NATA is a signatory to the ILAC Mutual Recognition Arrangement for the mutual recognition of the equivalence of testing, calibration and inspection reports.

**This document shall only be reproduced in full, with the exception of the certificate on p3**

### APPENDIX A5 TEST SETUP PHOTOGRAPHS

Edge On Secondary Landscape Position



Accredited for compliance with ISO/IEC 17025. The results of the test, calibrations and/or measurement included in this document are traceable to Australian/national standards. NATA is a signatory to the ILAC Mutual Recognition Arrangement for the mutual recognition of the equivalence of testing, calibration and inspection reports.

**This document shall only be reproduced in full, with the exception of the certificate on p3**

### APPENDIX A6 TEST SETUP PHOTOGRAPHS

Edge On Primary Landscape Position

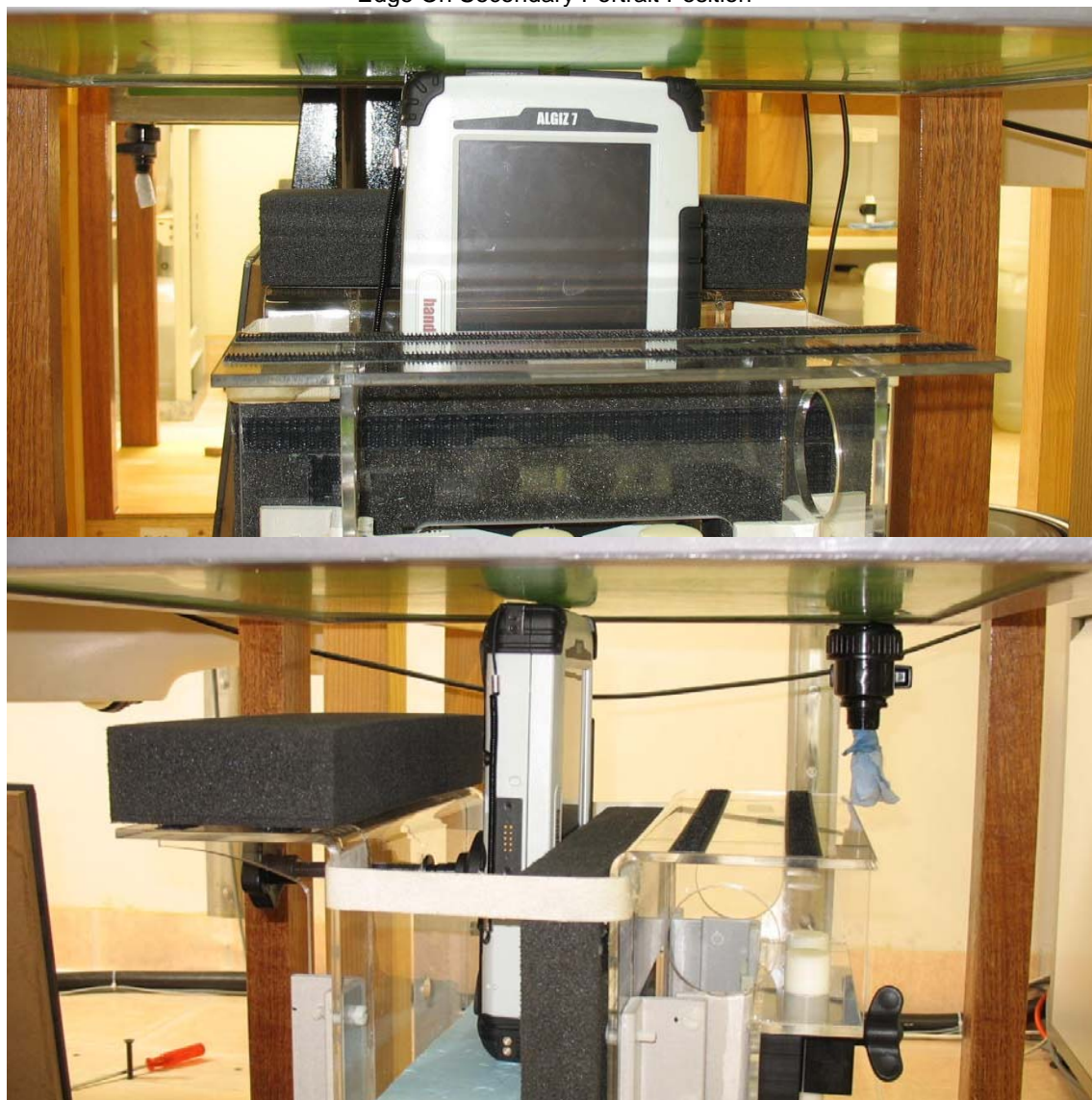


Accredited for compliance with ISO/IEC 17025. The results of the test, calibrations and/or measurement included in this document are traceable to Australian/national standards. NATA is a signatory to the ILAC Mutual Recognition Arrangement for the mutual recognition of the equivalence of testing, calibration and inspection reports.

**This document shall only be reproduced in full, with the exception of the certificate on p3**

## APPENDIX A7 TEST SETUP PHOTOGRAPHS

Edge On Secondary Portrait Position

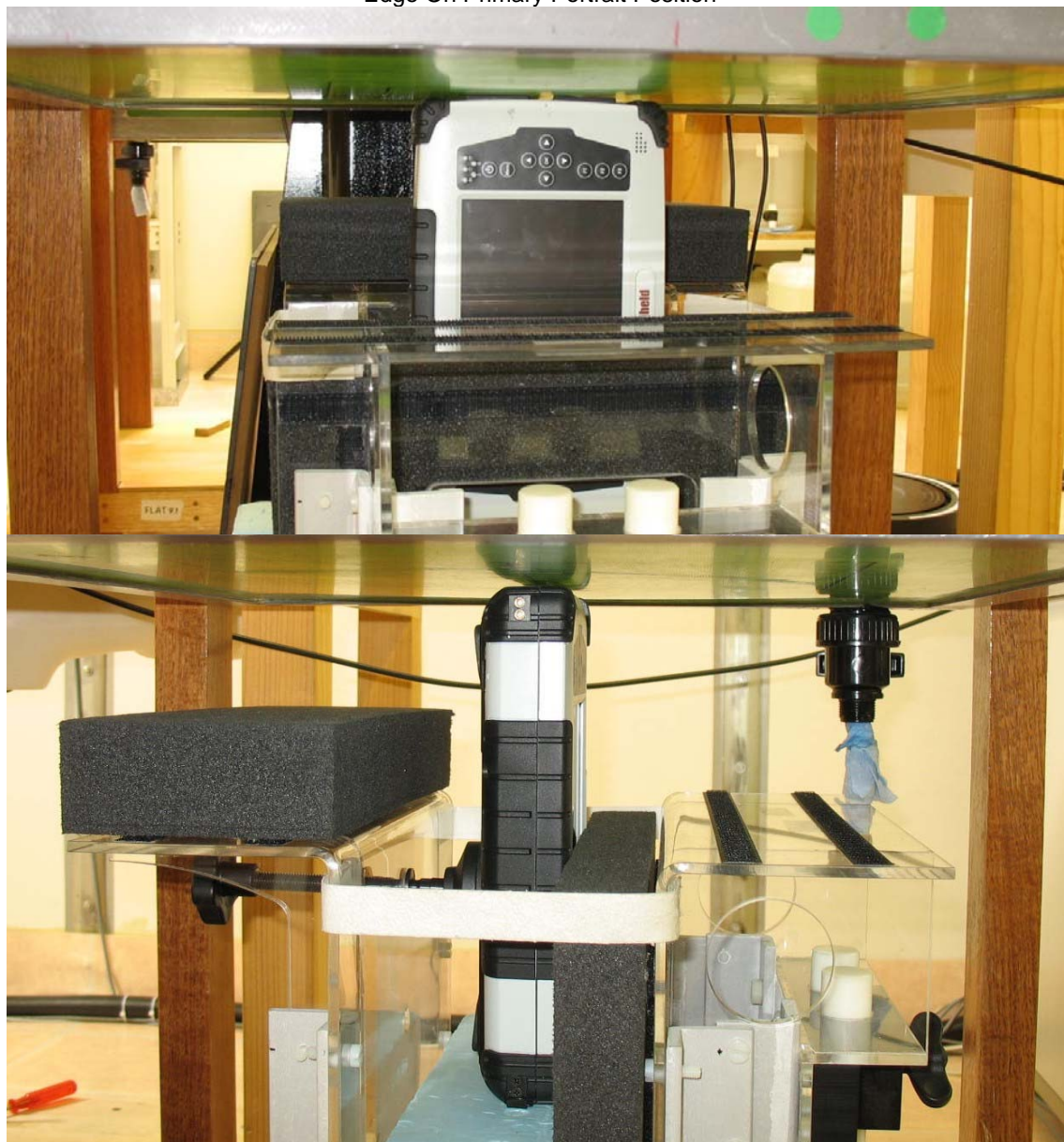


Accredited for compliance with ISO/IEC 17025. The results of the test, calibrations and/or measurement included in this document are traceable to Australian/national standards. NATA is a signatory to the ILAC Mutual Recognition Arrangement for the mutual recognition of the equivalence of testing, calibration and inspection reports.

**This document shall only be reproduced in full, with the exception of the certificate on p3**

### APPENDIX A8 TEST SETUP PHOTOGRAPHS

Edge On Primary Portrait Position



Accredited for compliance with ISO/IEC 17025. The results of the test, calibrations and/or measurement included in this document are traceable to Australian/national standards. NATA is a signatory to the ILAC Mutual Recognition Arrangement for the mutual recognition of the equivalence of testing, calibration and inspection reports.

**This document shall only be reproduced in full, with the exception of the certificate on p3**