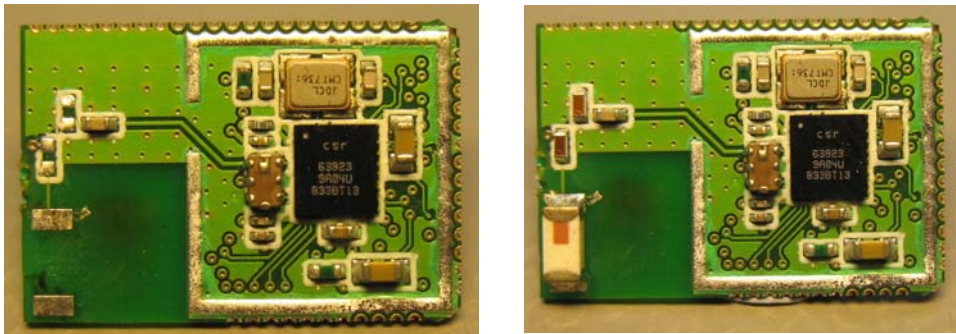


HW Declaration for WT21-N

FCC ID: QOQWT21N

WT21-N (FCC ID: QOQWT21N) is identical in all respects to the WT21-A (FCC ID: QOQWT21A) except for the antenna. The difference between the two versions is shown in the figure below. WT21-A uses a chip antenna with matching circuitry consisting of two chip coils at the feed line of the antenna. WT21-N is implemented by leaving the chip antenna together with the two matching coils not mounted. 50 ohm trace will be used from RF output of the module to an antenna connector to connect an external antenna to WT21-N.



The test report for FCC ID: QOQWT21A is being used to support the grant application for FCC ID: QOQWT21N because QOQWT21N is identical to QOQWT21A except for the stated antenna differences