

## Internal Photos of Team2 Transmitter

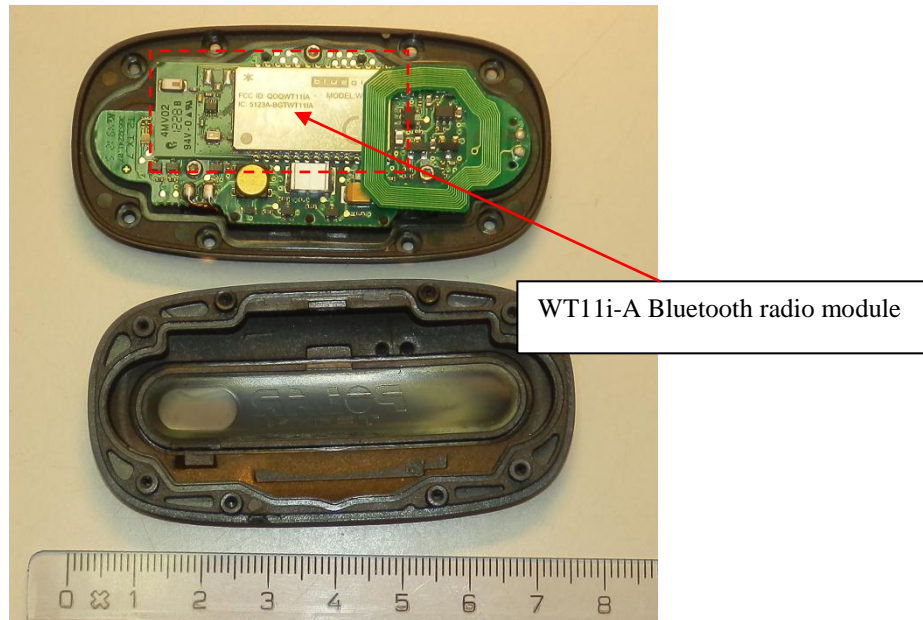


Figure 1. Transmitter module opened.



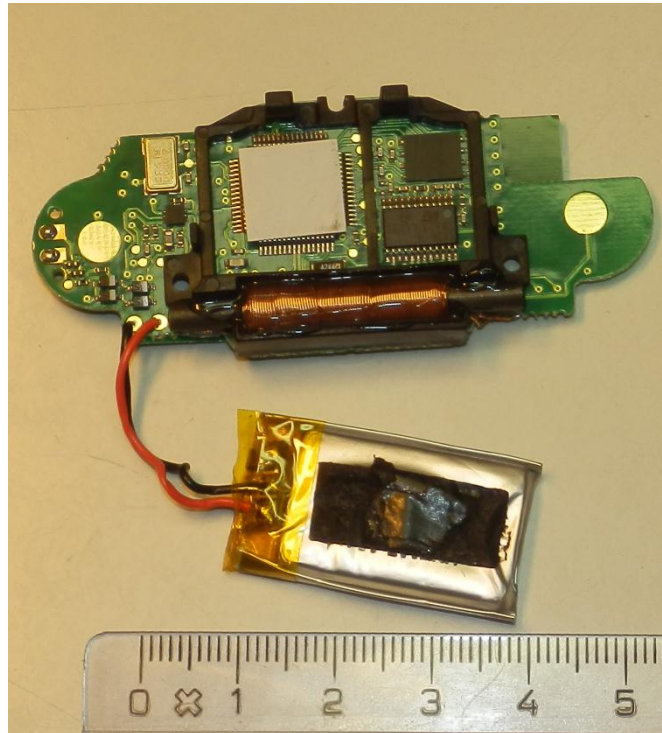


Figure 3. Transmitter module rear view with the battery.

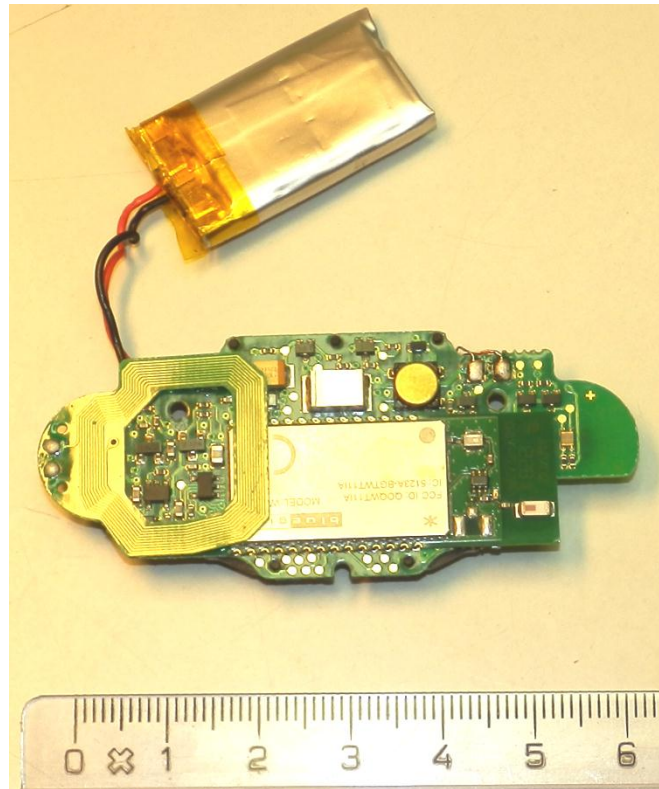


Figure 4. Transmitter module battery taken out of place, front side.

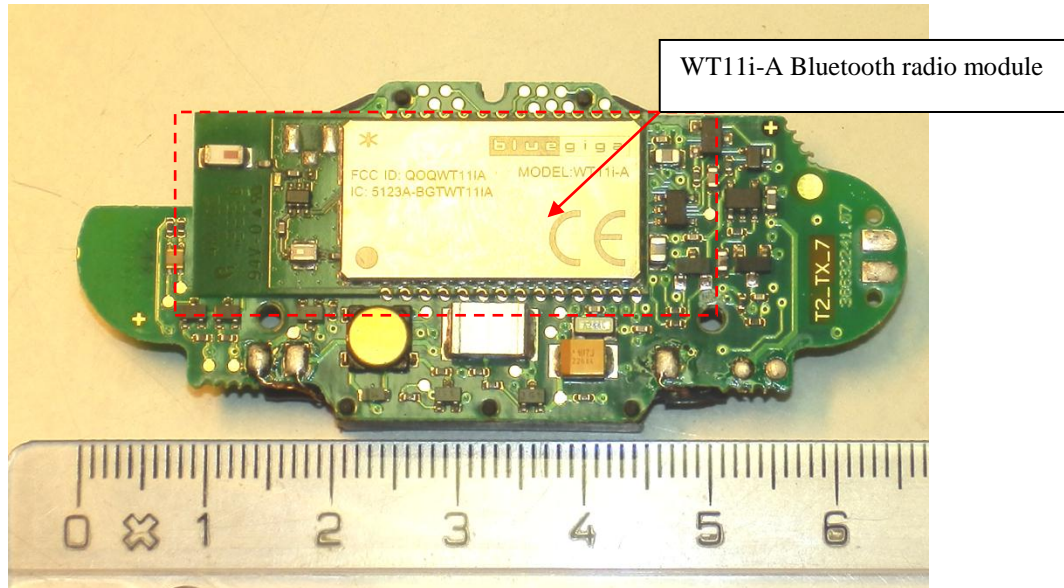


Figure 5. Transmitter module PWBA, front view without BT-module and coil.

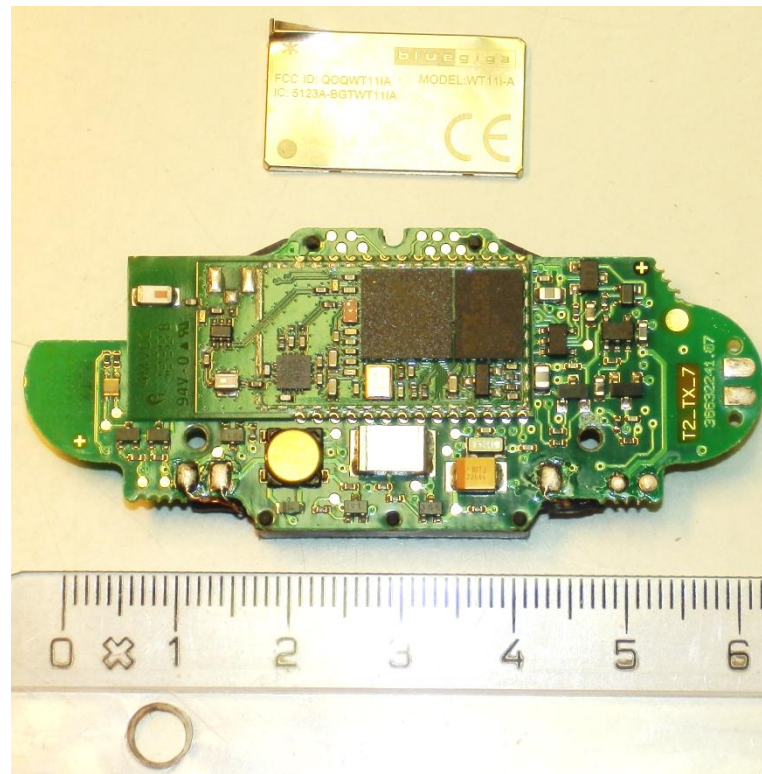
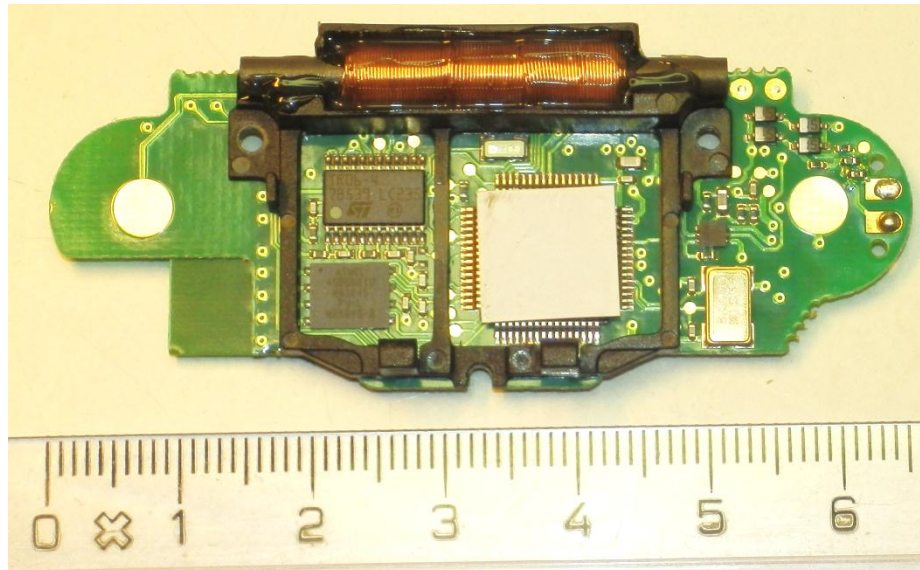


Figure 6. Transmitter module PWBA, front view without BT-module and coil. Shield removed.





**Figure 7. Transmitter module PWBA, rear view.**