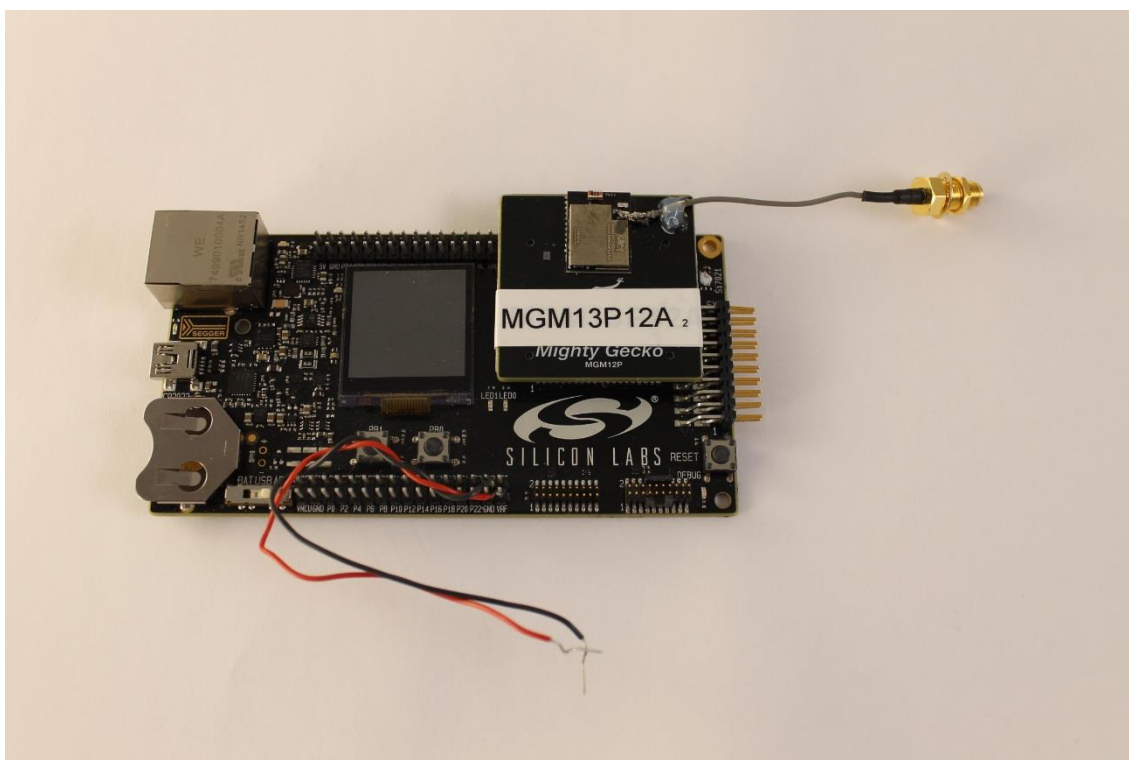
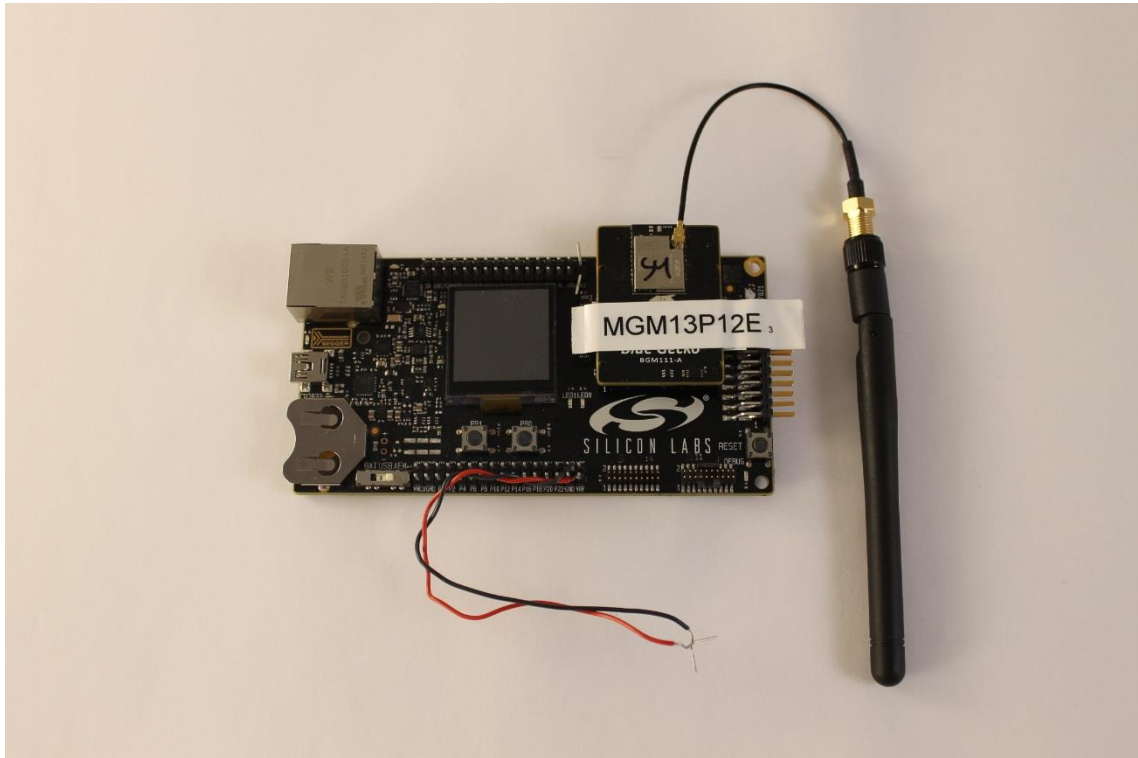


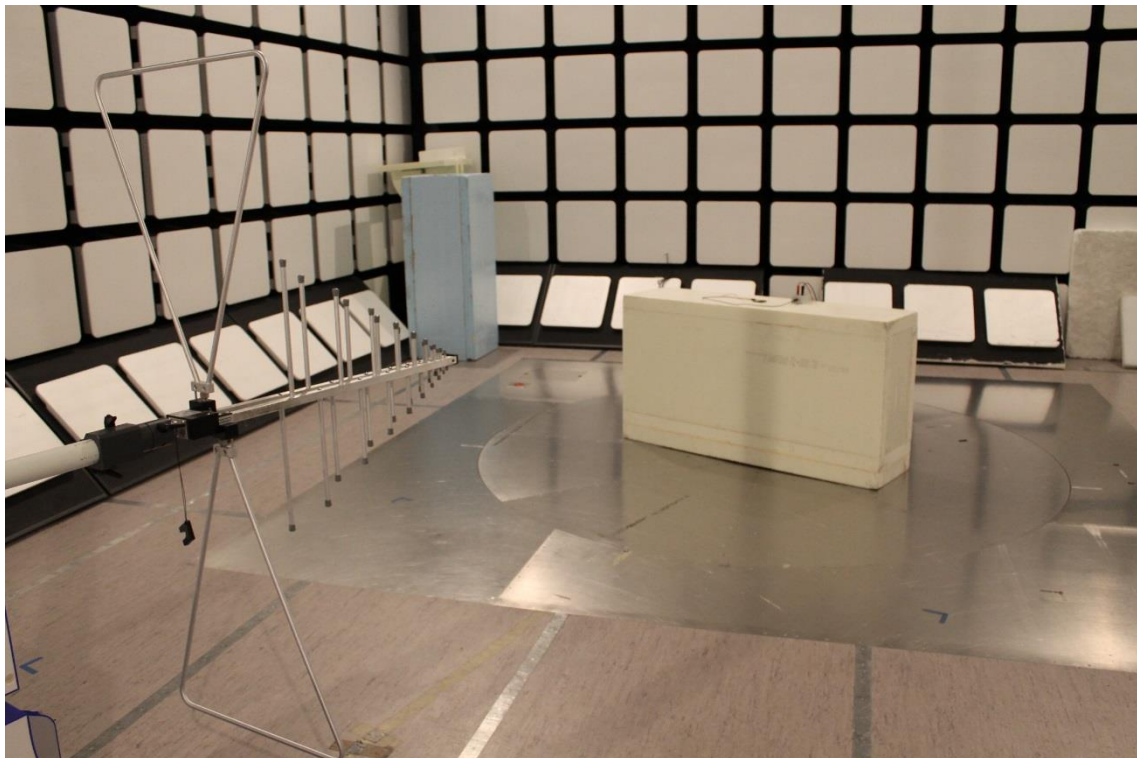
Photograph 1. DUT 1



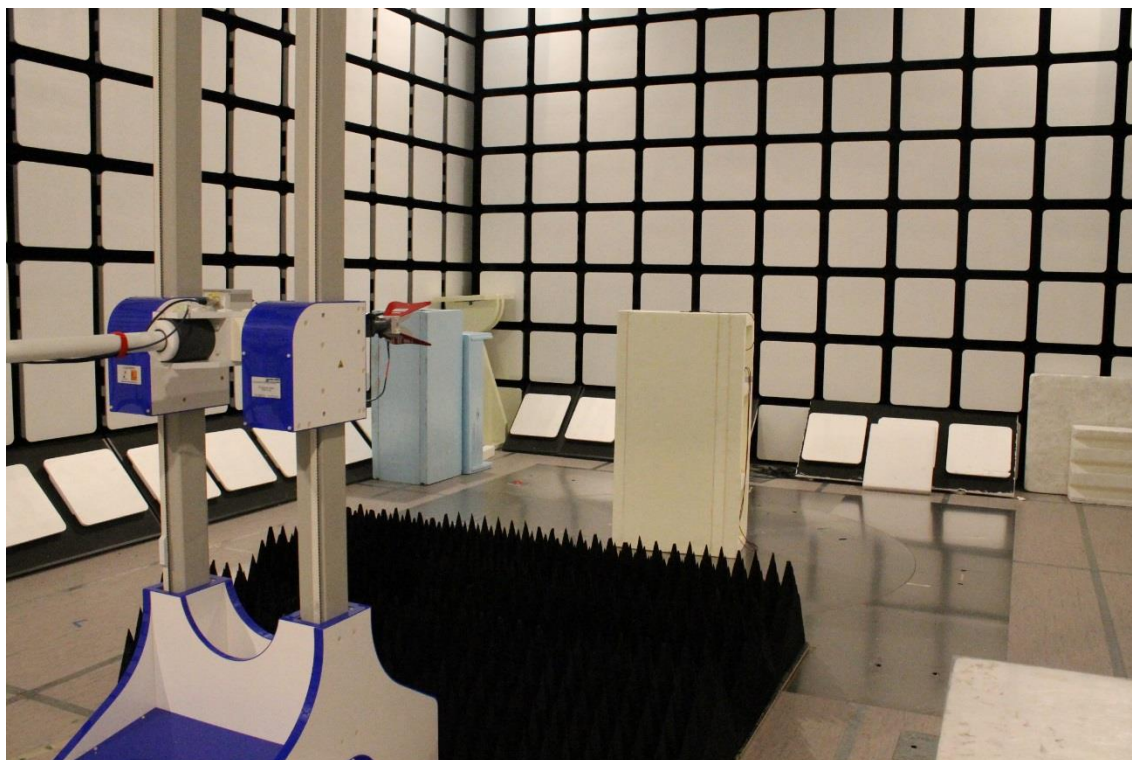
Photograph 2. DUT 2



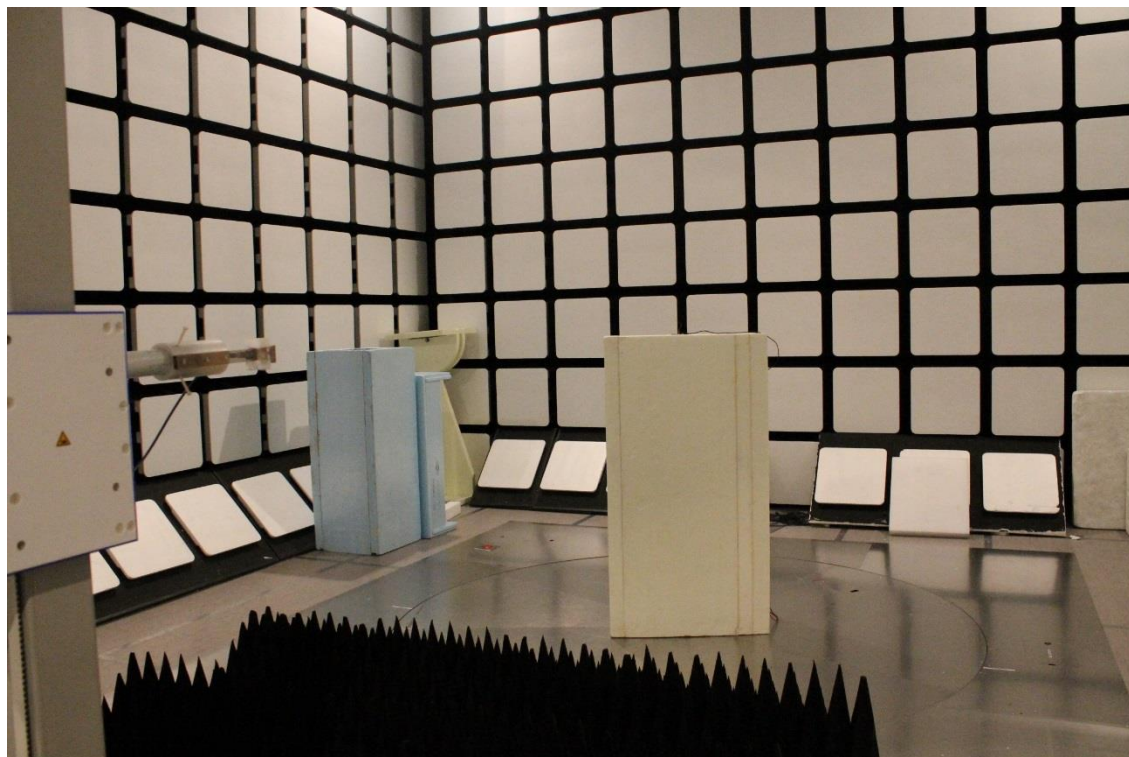
Photograph 3. DUT 3



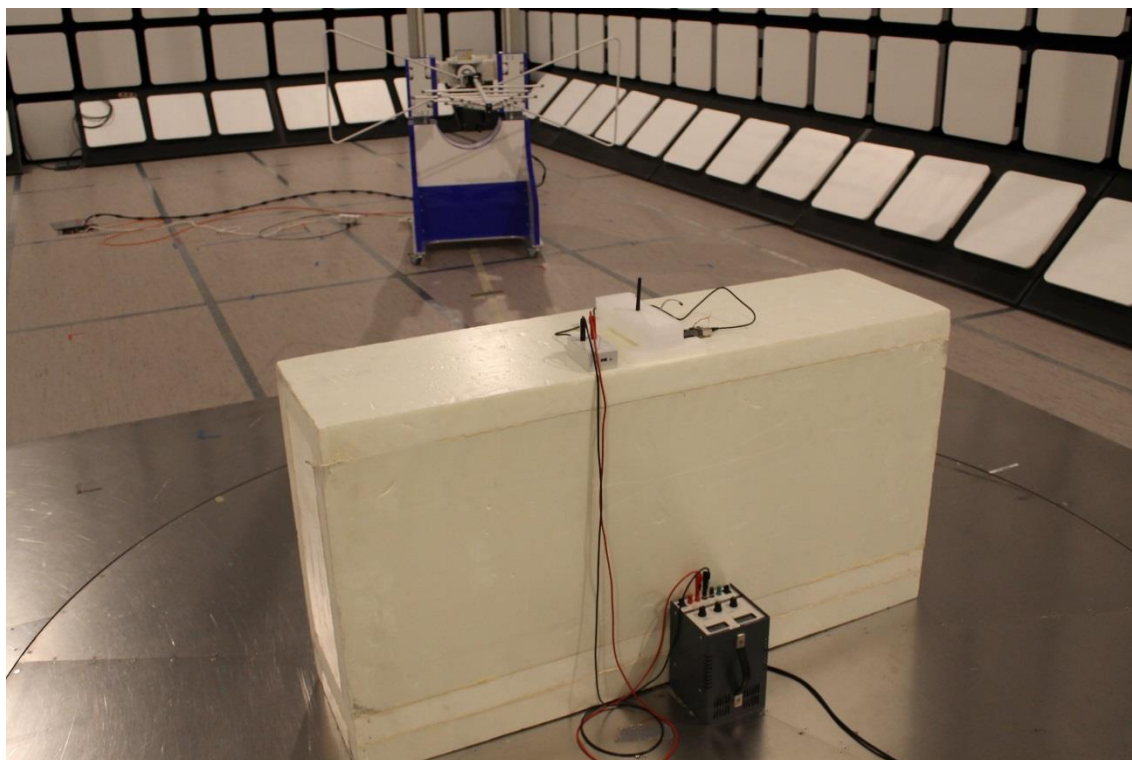
Photograph 4. Radiated Spurious Emissions 30 – 1000 MHz



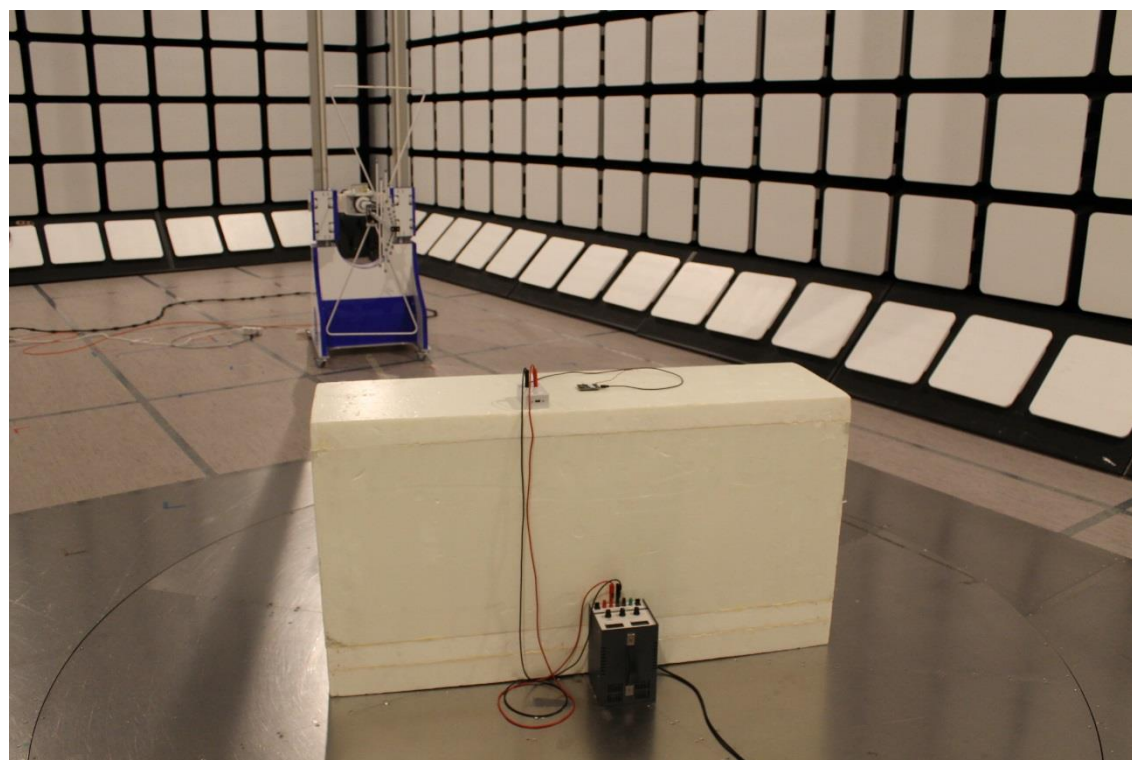
Photograph 5. Radiated Spurious Emissions 1 – 18 GHz



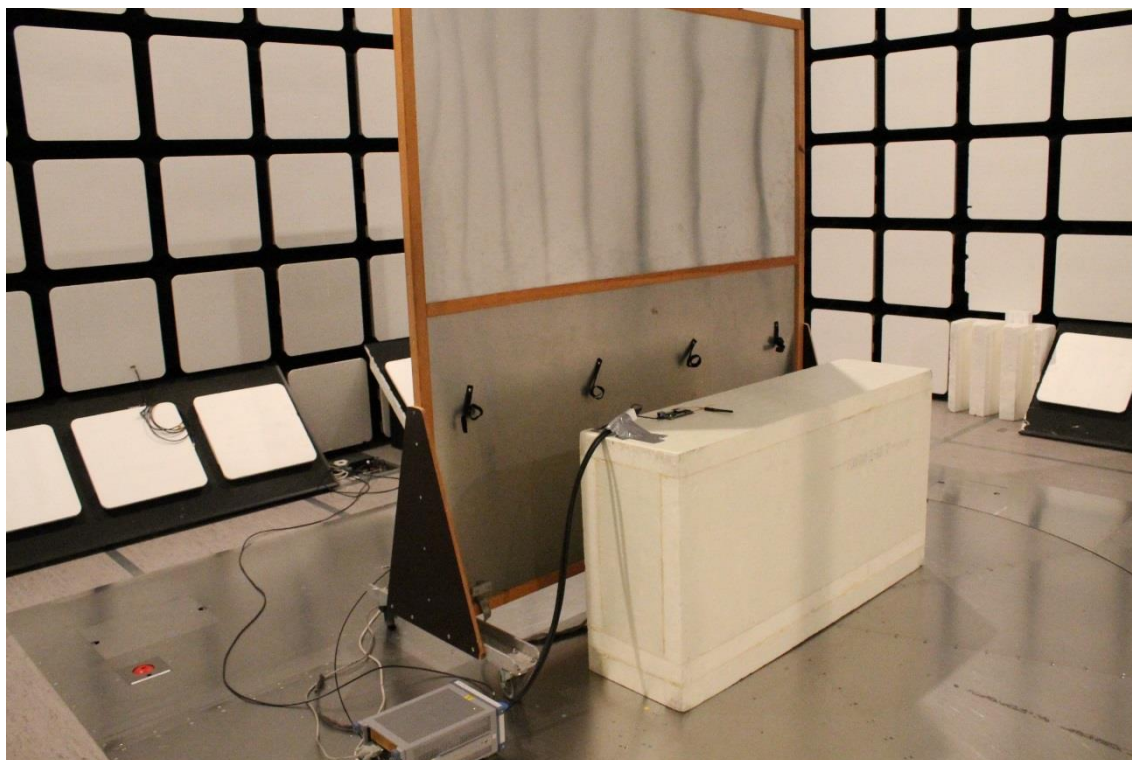
Photograph 6. Radiated Spurious Emissions 18 – 26.5 GHz



Photograph 7. EUT on table (External antenna)



Photograph 8. EUT on table (integral chip antenna)



Photograph 9. Conducted Emissions