

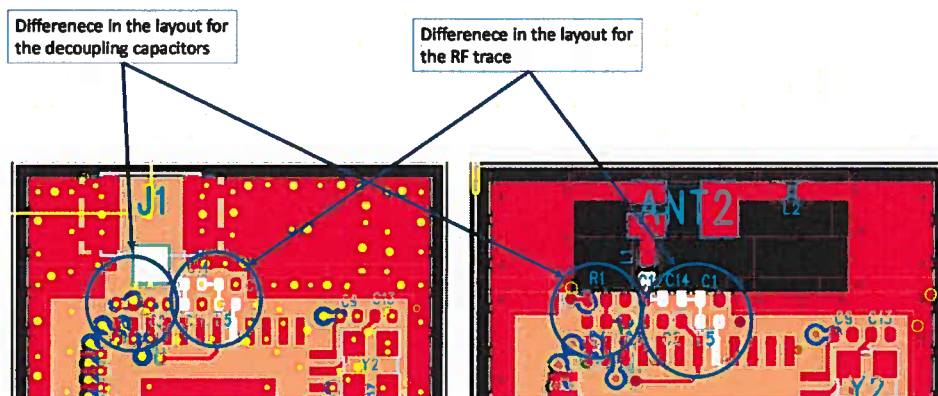


February 9, 2017

To whom it may concern,

Differences between MGM111A and MGM111E

The model MGM111E is electrically identical to MGM111A and the two models have same RF characteristics. The difference between these models is that in E the internal antenna has been changed to an antenna connector, 3 supply voltage decoupling capacitors are combined to one and the layout has been adjusted to fit in the antenna connector. The difference between the models is shown in the figure below.



Sincerely,

A handwritten signature in blue ink, appearing to read 'Pasi Rahikkala', is written over a horizontal line.

Pasi Rahikkala

Staff HW Engineer

Silicon Labs