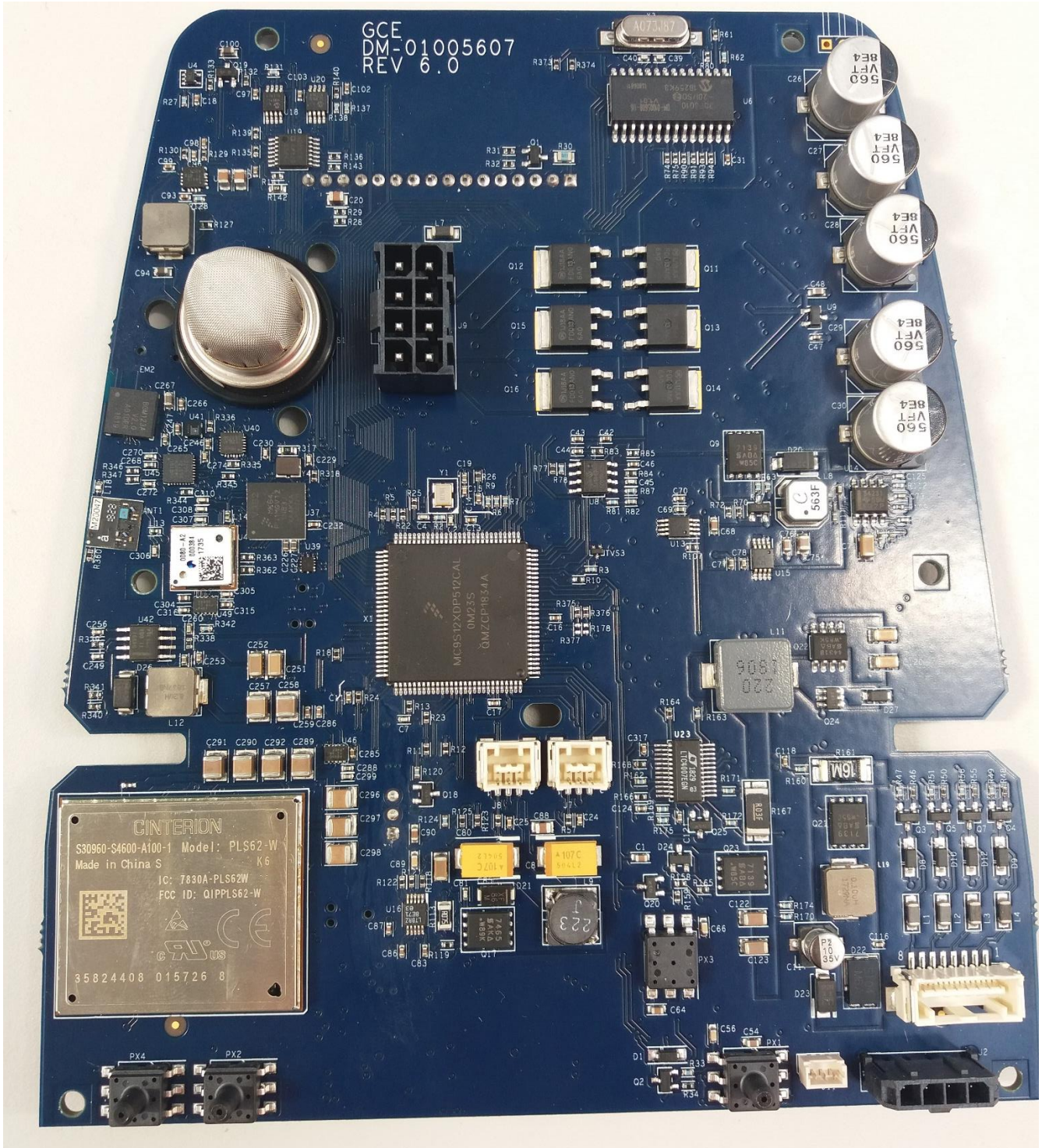
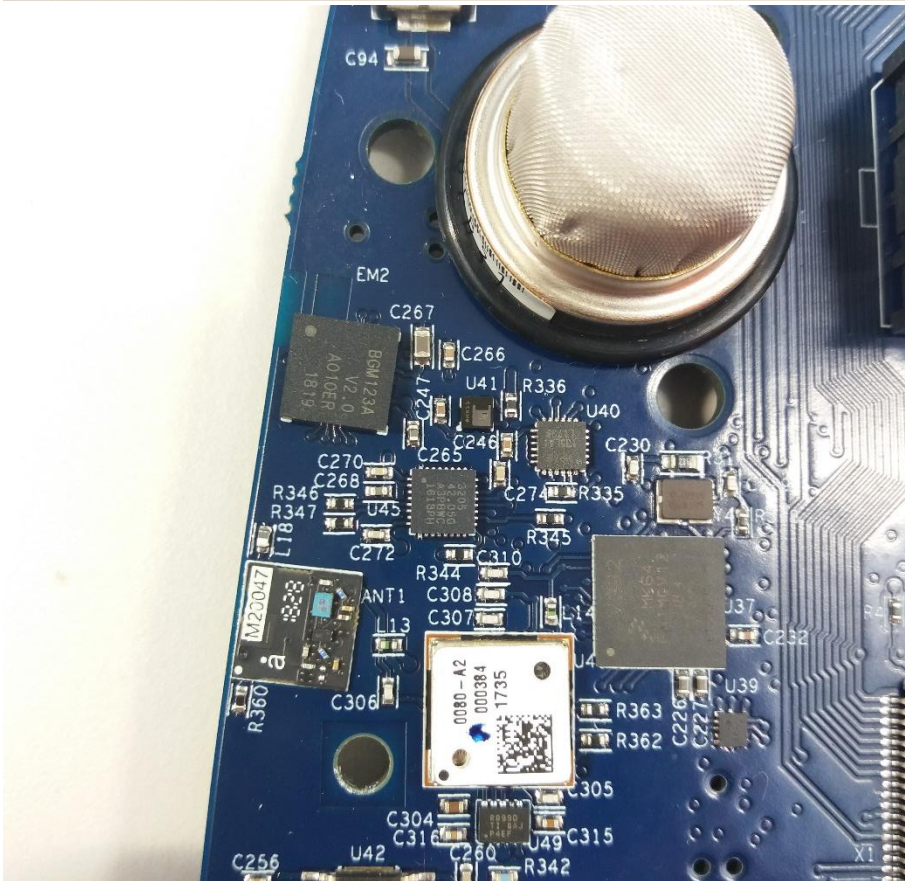
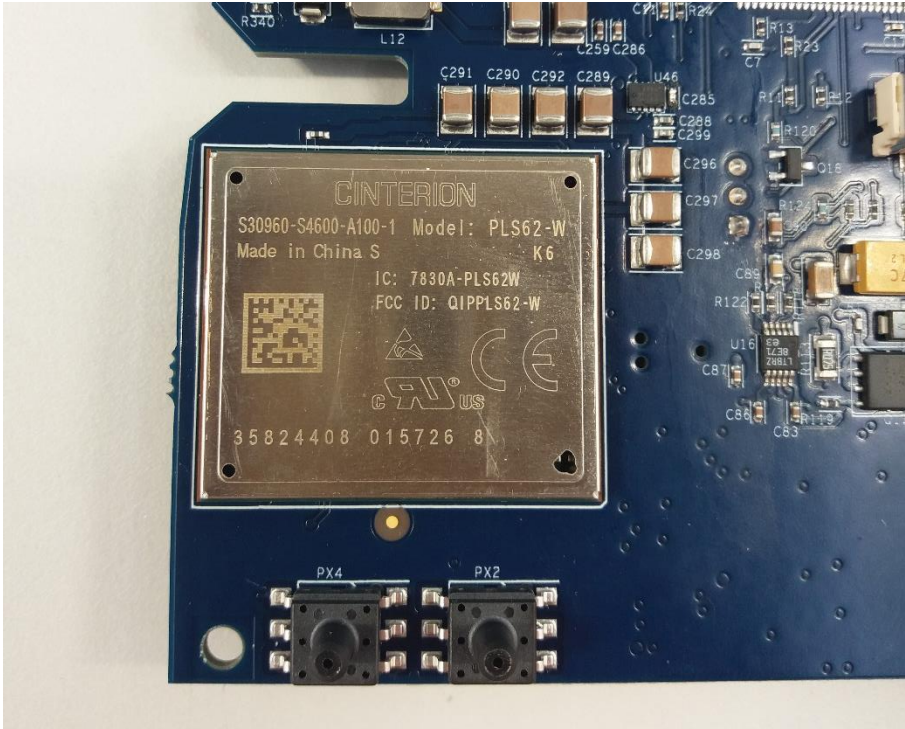
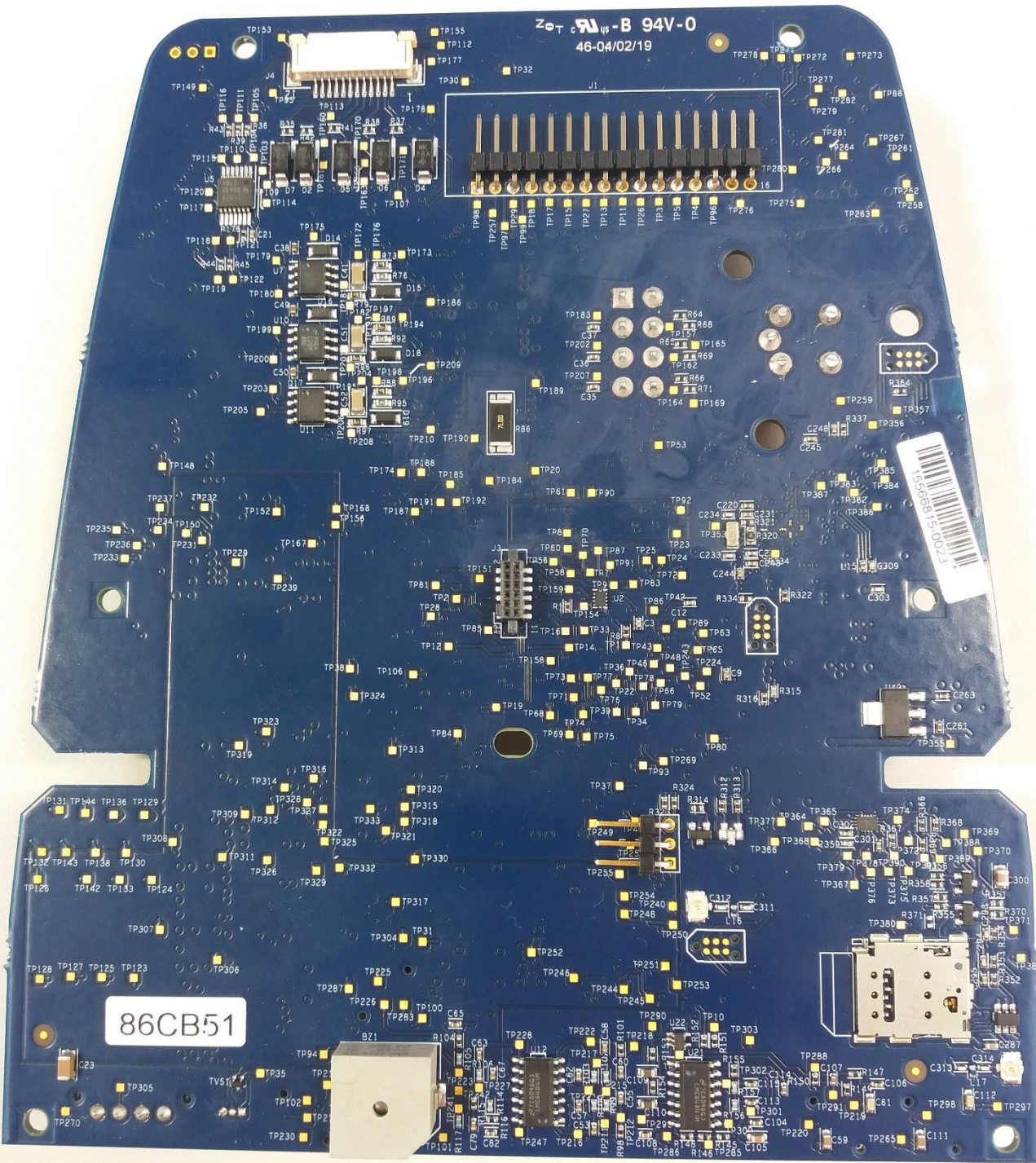


The board below is the Zeno Lite with Clarity Mainboard. Note that this board is shared with a non-radio variant, the Zeno Lite. The oxygen sensor does not have its protective cover fitted and no pipework is fitted for visibility. 2 Zoomed in photos show the radio module labelling.





Zotac NB-B 94V-0
46-04/02/19



86CB51



Below is the battery board fitted to the battery compartment that connects the battery and external power to the mainboard.

