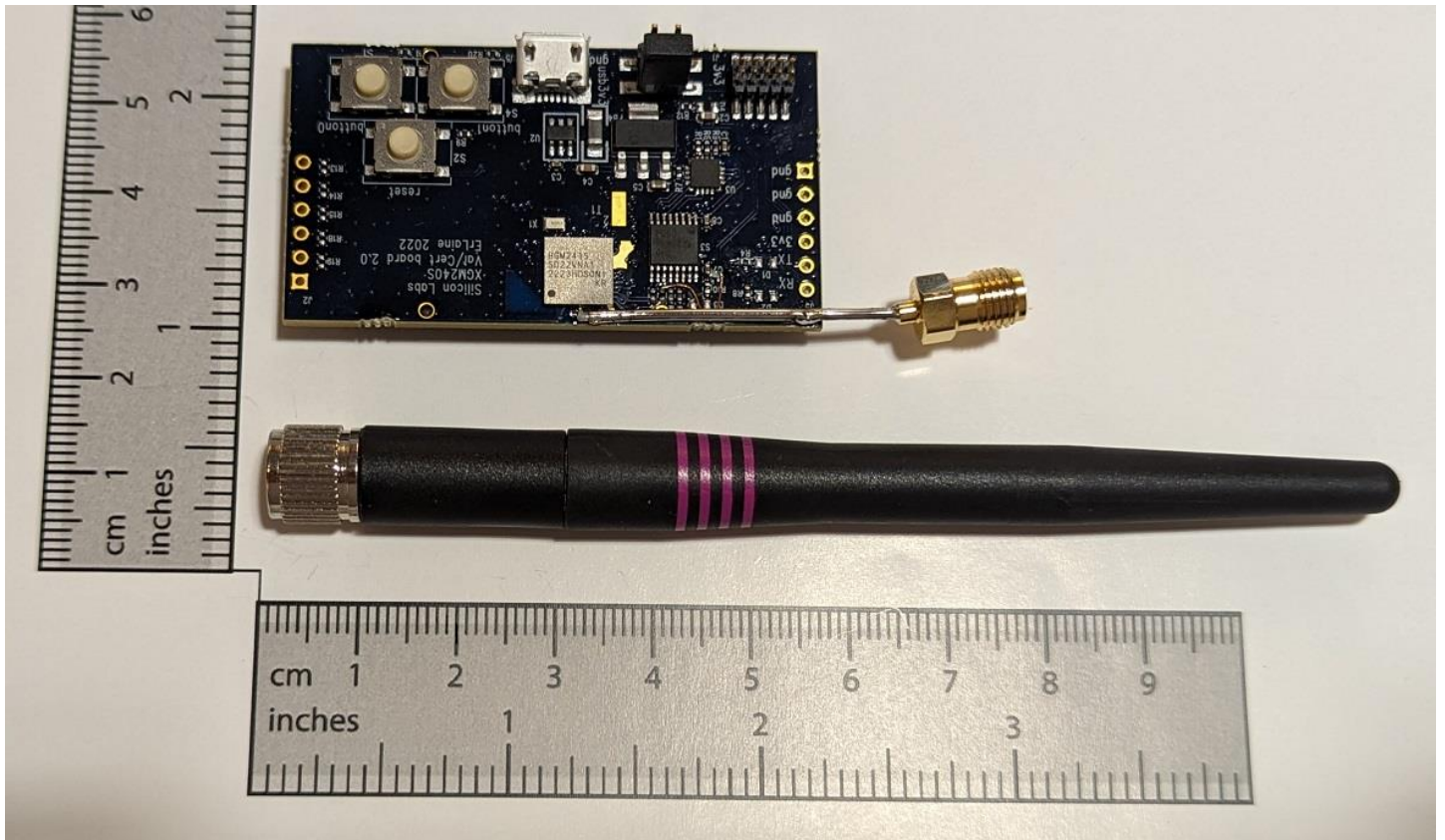
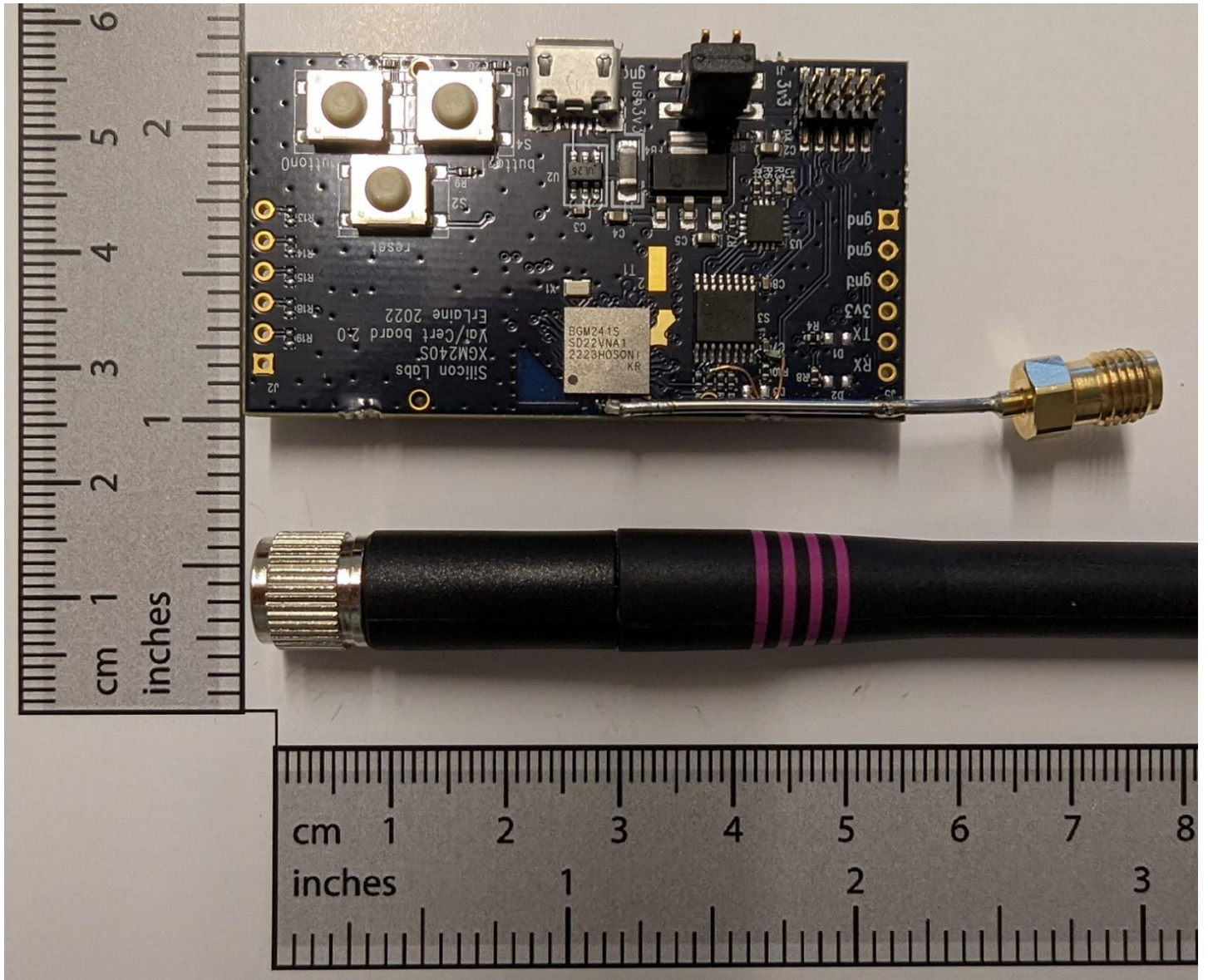


Photos of the external reference antenna used in radiated measurements of the *Bluetooth Low Energy* wireless radio module with model name of BGM241S22A

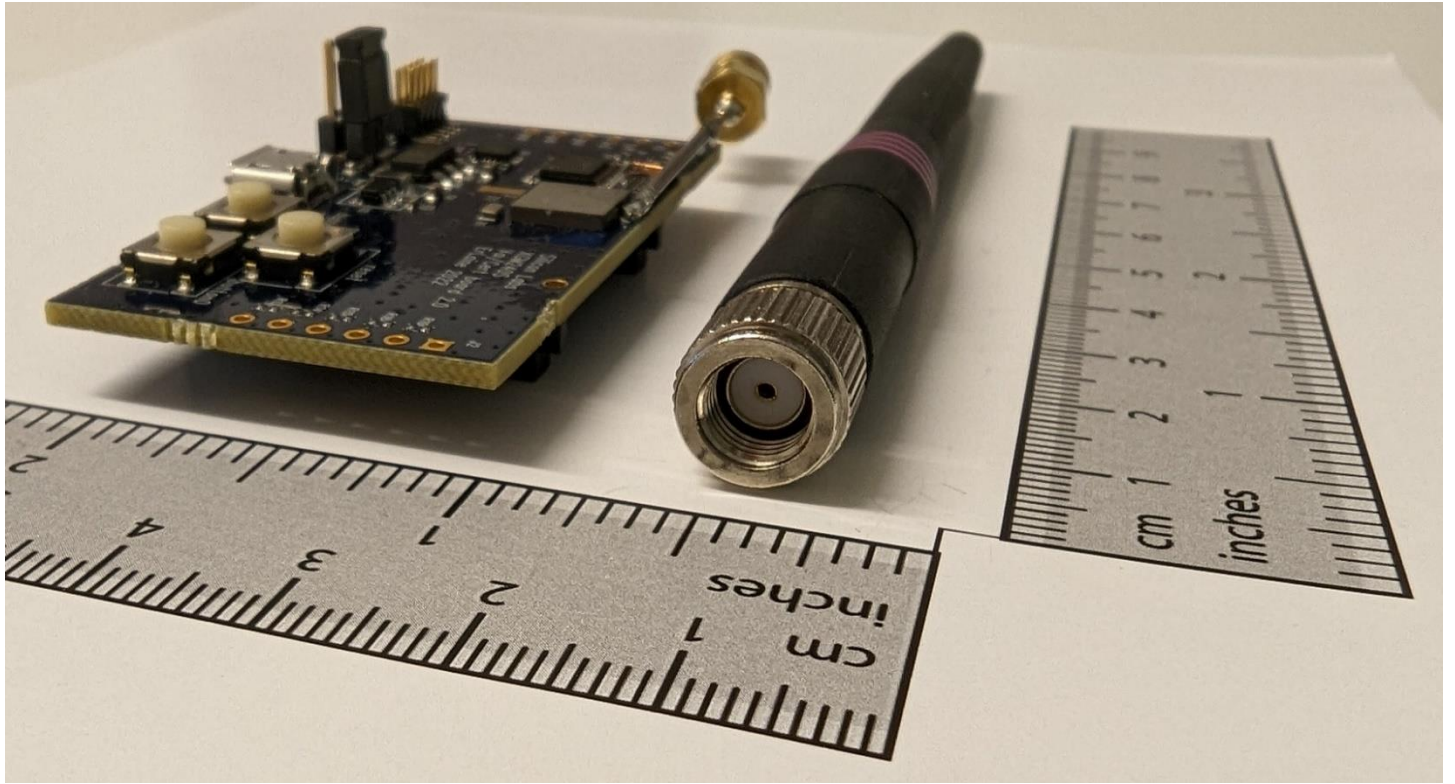


*Figure 1a*  
*Horizontal Full View of the Reference External Dipole Antenna, next to the Certification Board used as the Host during Lab Testing.*

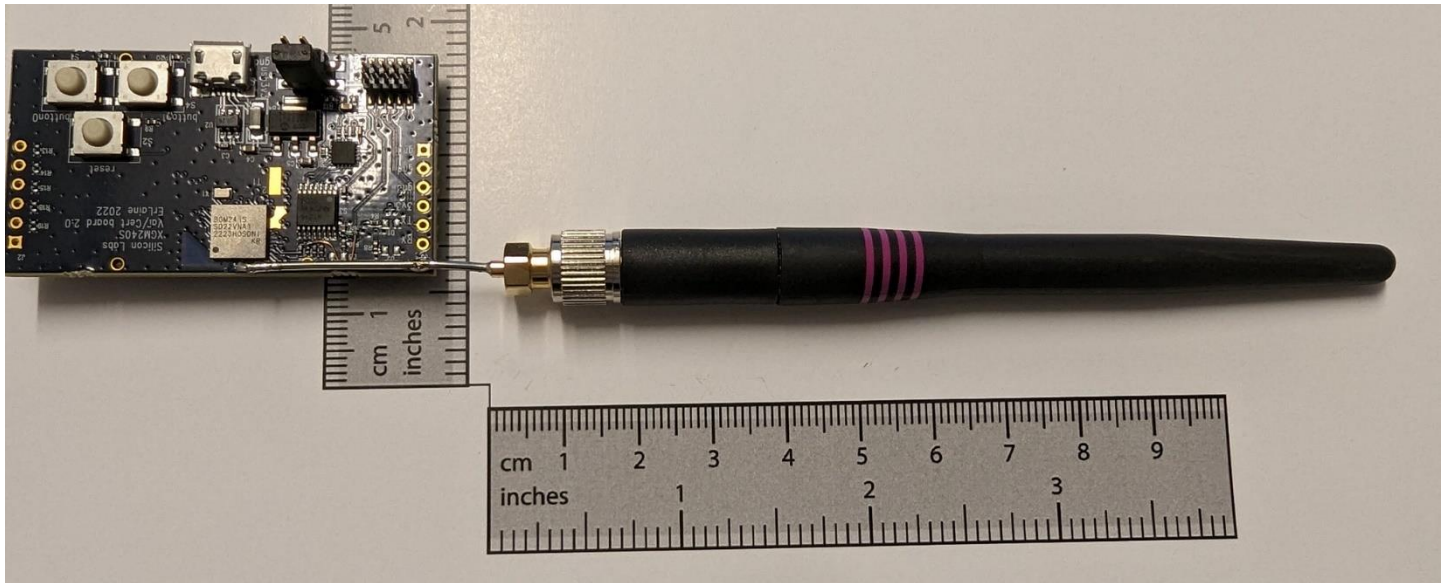


*Figure 1b*  
*Closer look at the Reference External Dipole Antenna,*  
*next to the Certification Board used as the Host during Lab Testing.*





*Figure 1*  
*Detail of the External Antenna's RP-SMA Connector.*  
*Antenna is the ANT-2.4-CW-CT-RPS by Linx Technologies Inc.*



*Figure 2  
Detail of the External Antenna while Connected to the  
Module's RF Pin using a Semi-rigid Coaxial Pigtail Cable*