

Photos depicting the *Bluetooth Low Energy and 802.15.4* wireless radio module with model name of MGM240S22A

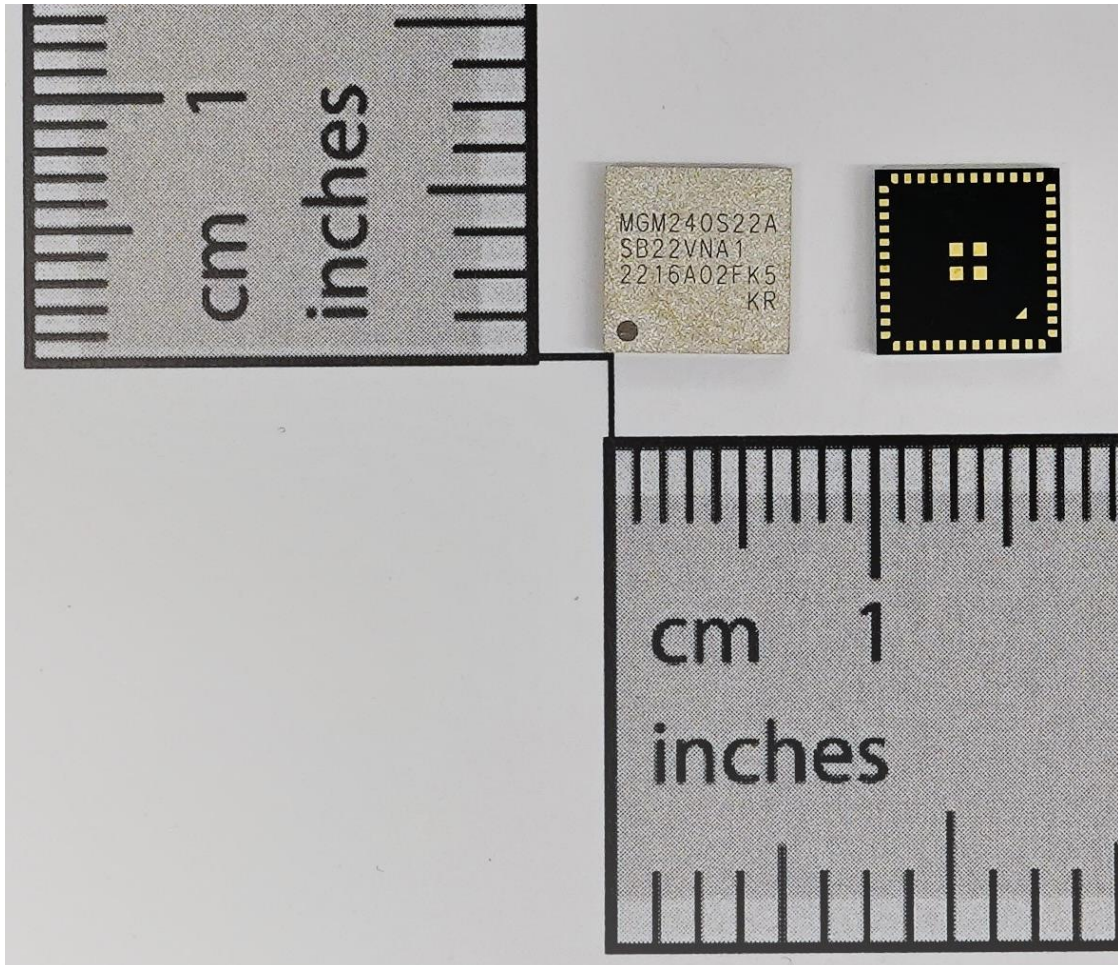


Figure 1: Left: Top/Front External view – Right: Bottom/Rear External View

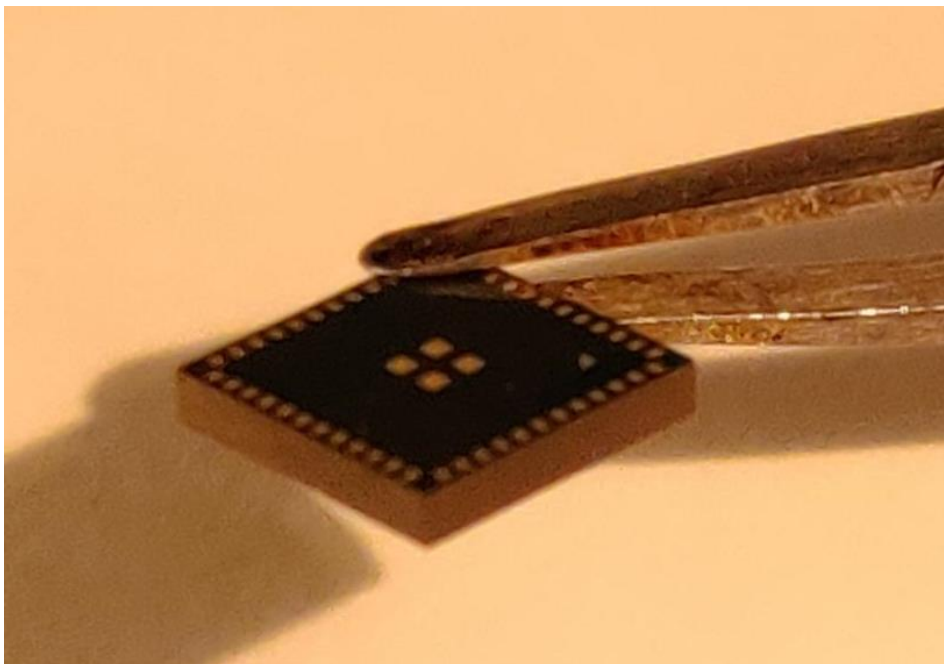
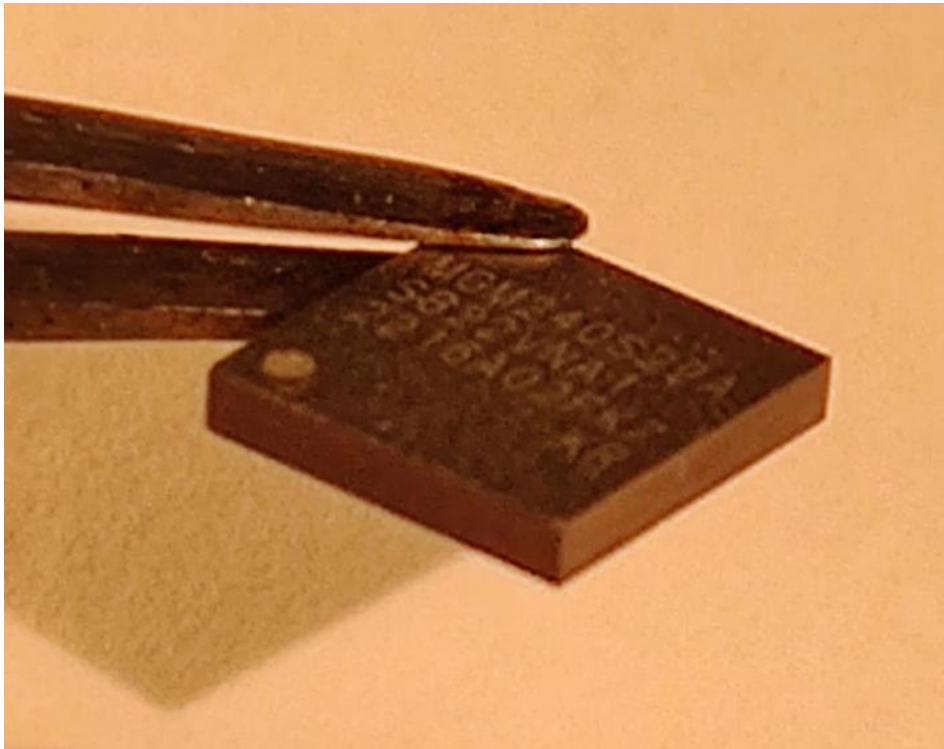


Figure 2 and 3: Details of module's packaging ()*

(*) It shows in particular that all internal components are not accessible because they are enclosed by the molding material which fills all empty spaces (just like any other IC). Integrators and users do not have access to the internals of the module, due to the fact that the module is completely molded and mechanically removing the molding material will destroy the module and break the parts in it.