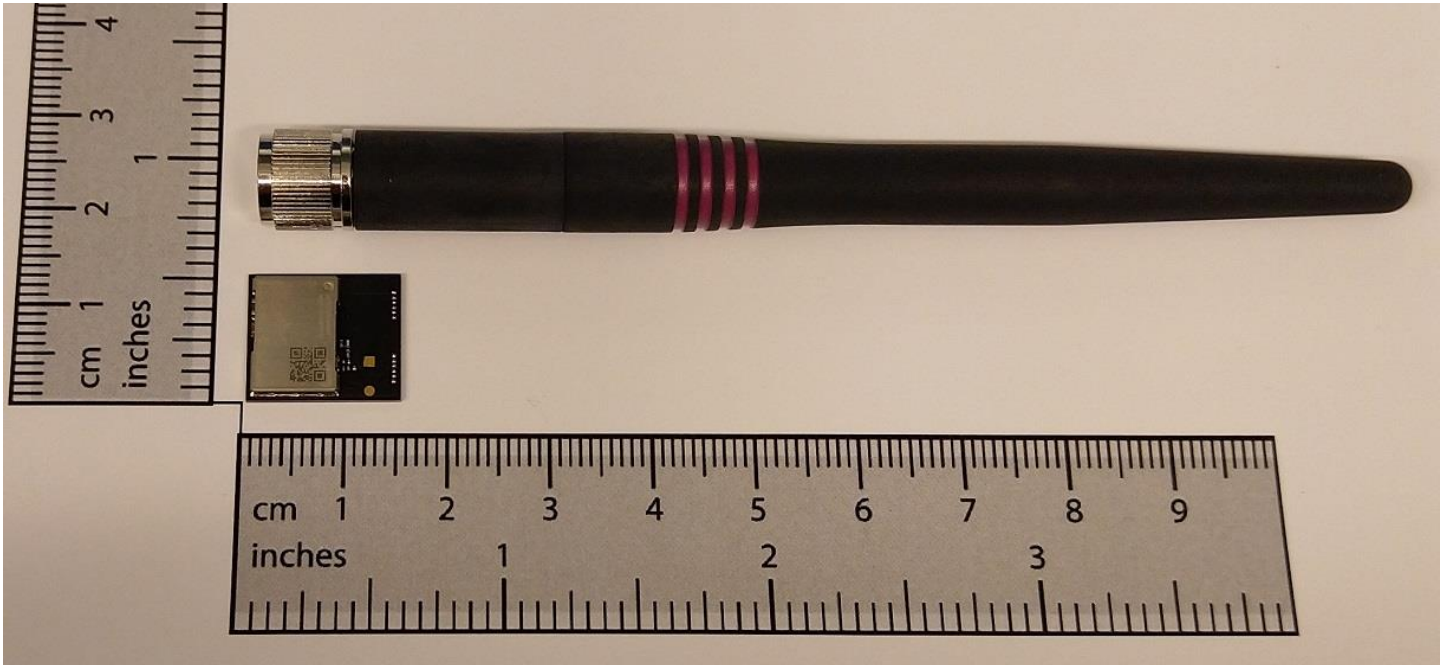
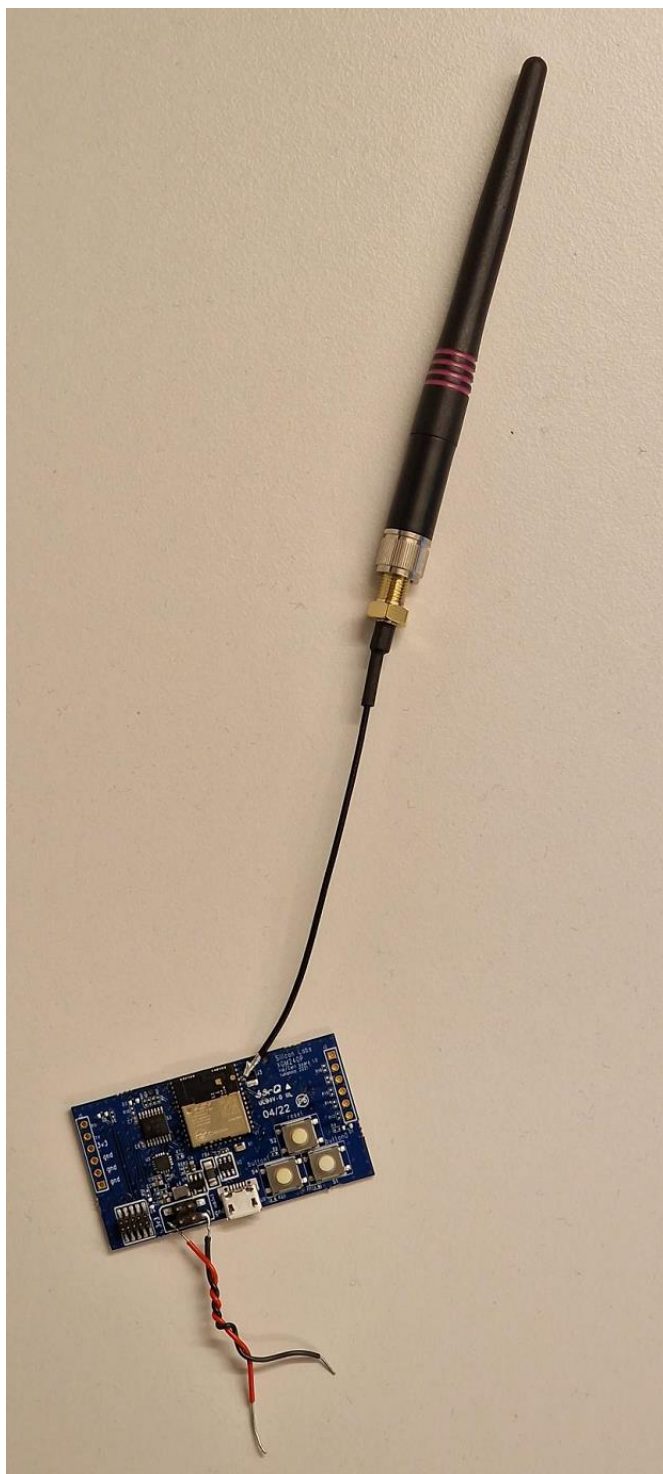


Photos of the external reference antenna used in radiated measurements of the Bluetooth Low Energy and 802.15.4 wireless radio module with model name of MGM240P32N



*Figure 1: Horizontal Full View of the Reference External Antenna, next to the MGM240P32N Module – Antenna is the ANT-2.4-CW-CT-RPS by Linx Technologies Inc.*

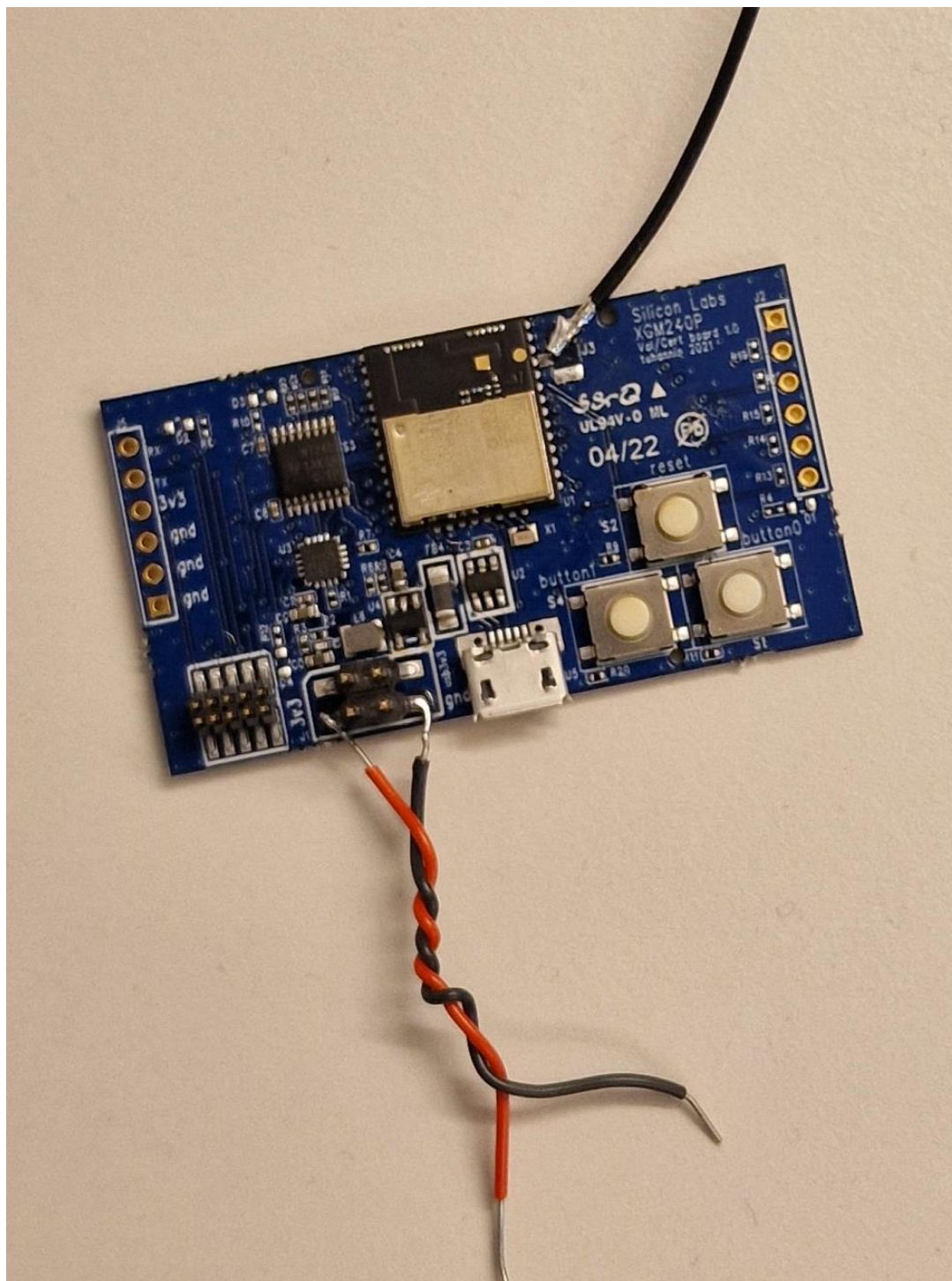


*Figure 2: Overall View of the Complete Reference Antenna Subsystem, made of the External Antenna plus the IpeX Coaxial Cable, and Connected to the RF Pin of the MGM240P32N Module*



*Figure 3: Detail of the External Antenna and the IpeX Coaxial Cable, Belonging to the Complete Reference Antenna Subsystem for the MGM240P32N Module*





*Figure 4: Detail of the IpeX Coaxial Cable Connected to the RF pin as the Unique Antenna Connector of the MGM240P32N Module*