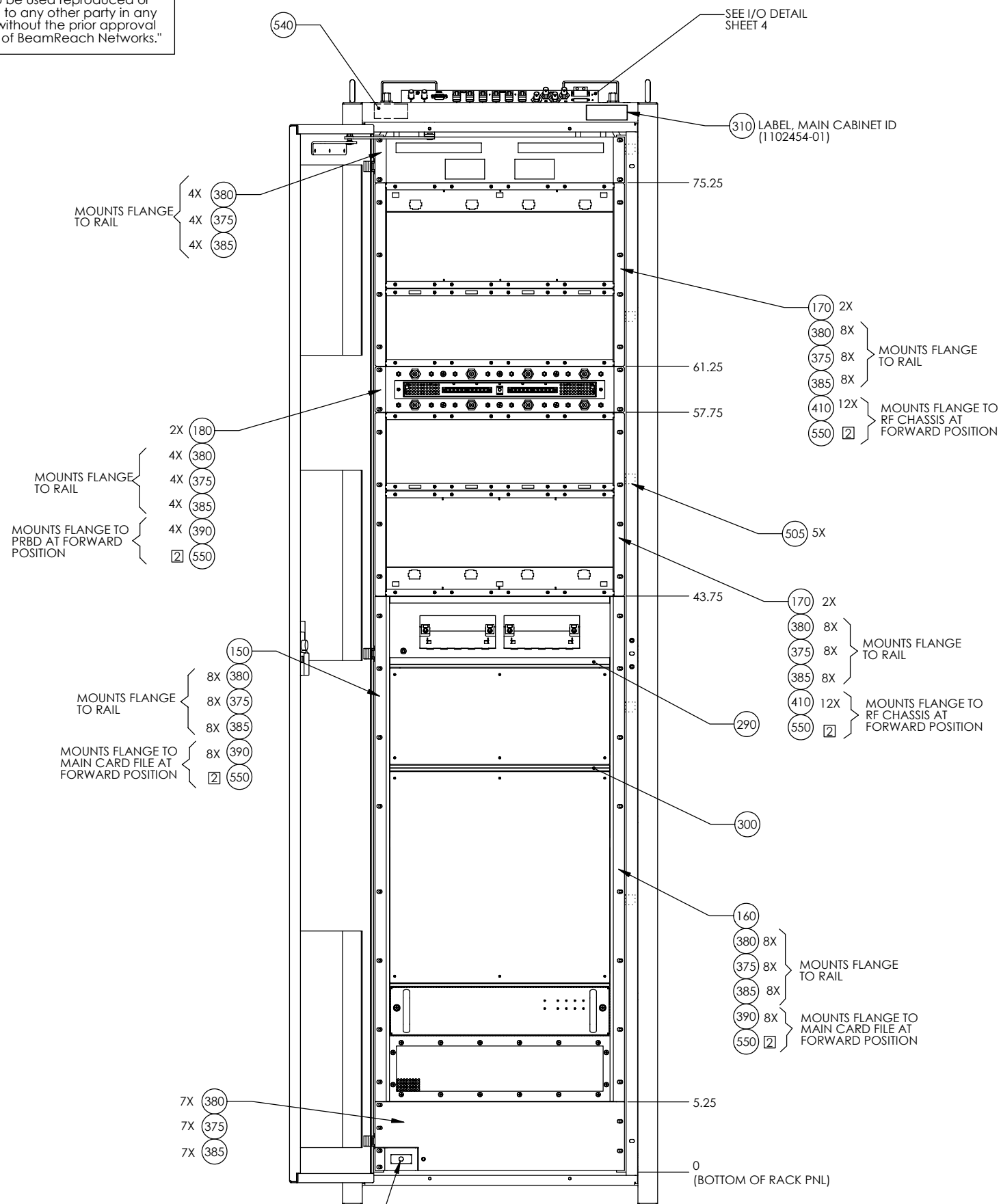


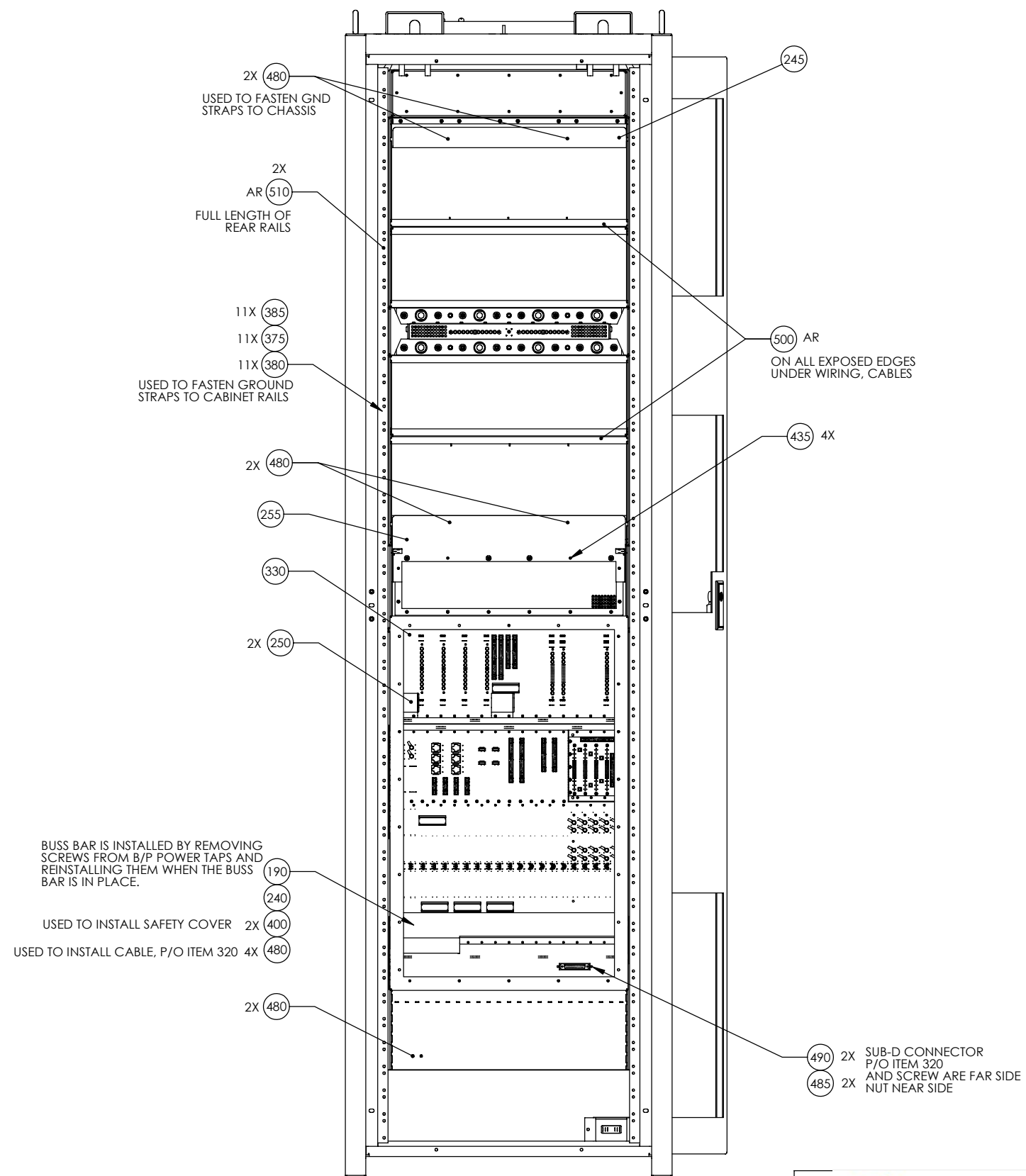
"The information contained herein is proprietary to BeamReach Networks. It is not to be used reproduced or disclosed to any other party in any manner without the prior approval in writing of BeamReach Networks."

SEE SHEET ONE



1102546-0001 SWITCH P/O ITEM 320

FRONT VIEW



BUSS BAR IS INSTALLED BY REMOVING SCREWS FROM B/P POWER TAPS AND REINSTALLING THEM WHEN THE BUSS BAR IS IN PLACE.

USED TO INSTALL SAFETY COVER 2X 400

USED TO INSTALL CABLE, P/O ITEM 320 4X 480

REAR VIEW