

## In-Wall Smart Dimmer



Z-Wave® certified wireless lighting control

**Thank you for your purchase!**

Instructions made easy. Register your product. Scan code or visit [www.byjasco.com/58438I](http://www.byjasco.com/58438I).

Like our product? Having problems? Scan code or visit [www.byjasco.com/deals](http://www.byjasco.com/deals).

Adding your device to a Z-Wave network. Follow the instructions for your Z-Wave certified controller to add a device to the Z-Wave network.

### ADDING YOUR DEVICE TO A Z-WAVE NETWORK

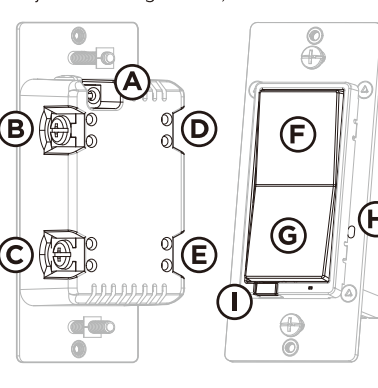
To remove and reset the device. Follow the instructions for your Z-Wave certified controller to remove a device to the Z-Wave network.

### SPECIFICATIONS — IMPORTANT!

ZWA3016 Voltage: 120VAC, 60Hz Signal (frequency): 908.4/916MHz

### FEATURES

Important! The fixture controlled by the Z-Wave in-wall smart dimmer must not exceed dimmer ratings. The dimmer is designed only for use with permanently installed fixtures.

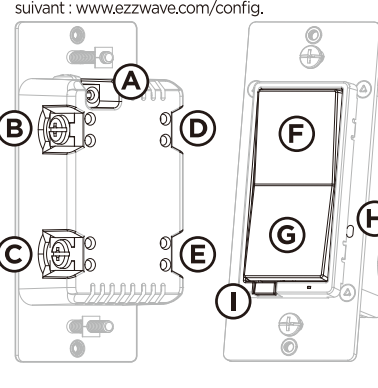


### CARACTÉRISTIQUES TECHNIQUES — IMPORTANT!

ZWA3016 Voltage: 120VAC, 60Hz Signal (frequency): 908.4/916MHz

### CARACTÉRISTIQUES

Important! L'appareil d'éclairage commandé par gradateur intelligent Z-Wave ne doit pas dépasser les caractéristiques nominales.



### WARNING — SHOCK HAZARD

Turn OFF the power to the branch circuit for the device and lighting fixture at the service panel. All wiring connections must be made with the power OFF to avoid personal injury and damage to the device.

### CHANGE PADDLE

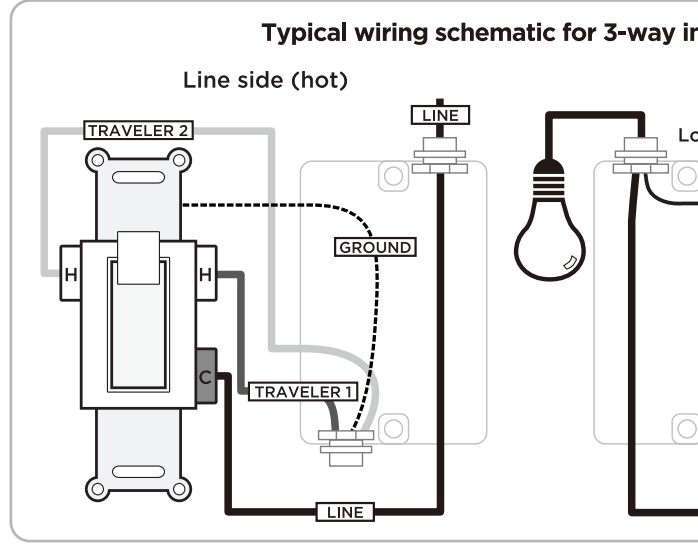
This step is optional. Before installation, you may want to change the paddle to match your wallplate or décor.

### REMOVE SINGLE-POLE SWITCH

1. Shut off power to the circuit at the circuit breaker or fuse box. 2. Remove wallplate. 3. Remove the switch mounting screws.

### STANDARD 3-WAY SWITCH WIRING

Important! The Z-Wave device operates with add-on switches by default. To install it with a standard 3-way switch, follow the steps under standard 3-way switch wiring.



### LINE SIDE (Z-WAVE DEVICE)

1. Shut off power to the circuit at the circuit breaker or fuse box. 2. Remove line side wallplate.

### 3-WAY CONFIGURATION

The smart device is set to work with add-on switches by default. To use with a standard 3-way switch, follow the steps below.

### ADD-ON SWITCH COMPATIBLE

Enbrighten, UltraPro and JascoPro Series add-on switches support the same features as the Z-Wave device, such as single-, double- and triple-tap functions.



### Z-WAVE INTEROPERABILITY

This device supports association command class (3 Groups). Association Group 1 supports LifeLine, Binary Switch Rocker.

### CONFIGURATION À TROIS VOIES

Par défaut, l'appareil intelligent est configuré pour fonctionner avec des interrupteurs supplémentaires.

### COMPATIBLE AVEC LES INTERRUPTEURS COMPLÉMENTAIRES

Les interrupteurs supplémentaires Enbrighten, UltraPro et JascoPro Series prennent en charge les mêmes caractéristiques que l'appareil Z-Wave.

### INTEROPÉRABILITÉ ENTRE LES DISPOSITIFS Z-WAVE

Cet appareil prend en charge la classe de commandes Association (trois groupes). Le groupe d'association 1 prend en charge la ligne de sécurité et le rapport Binary Switch.

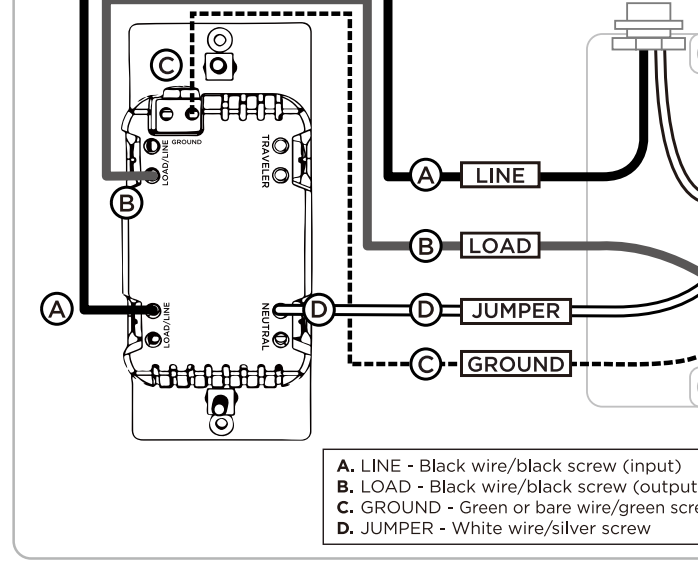
### FABRIQUÉ EN CHINE

Distribué par Jasco Products Company LLC, 10 East Memorial Rd, Oklahoma City, OK 73154. Ce produit est garanti par une garantie limitée de cinq ans.

### WARNING — SHOCK HAZARD

Attach using the enclosure's holes, strip insulation 5/8in. (16mm). UL specifies the tightening torque for the screws is 12lb-in (14Kgf-cm).

### WIRING REQUIREMENTS



1. Connect green/bare wire to the GROUND terminal. 2. Connect the black wire from the light to either LINE/LOAD terminal.

### ESPECIFICACIONES IMPORTANTES!

ZWA3016 Voltage: 120VAC, 60Hz Señal (frecuencia): 908.4/916MHz Cargas máximas: 600W, 2-gang 500W or 3-gang 400W incandescent, 360W or 3A CFL/LED

### CARACTERÍSTICAS

Important! El aparato controlado por el interruptor de pared reductor inteligente Z-Wave no debe superar las clasificaciones del interruptor de pared reductor.

### FAMILIARIZARSE CON SU INTERRUPTOR DE PARED REDUCTOR INTELIGENTE Z-WAVE

Encendido y apagado manual o remoto mediante el controlador Z-Wave. Se puede agregar a varios grupos y escenas.

### LINEA LADO (DISPOSITIVO Z-WAVE)

1. Apague el poder al circuito en el interruptor de fusibles o caja de fusibles. 2. Quite la placa lateral de la pared.

### CONFIGURACIÓN DE TRES VÍAS

El dispositivo inteligente está configurado para funcionar con interruptores auxiliares de manera predeterminada.

### COMPATIBLE CON INTERRUPTOR AUXILIAR

Los interruptores auxiliares Enbrighten, UltraPro y JascoPro Series son compatibles con las mismas características que el dispositivo Z-Wave.

### INTEROPERABILIDAD DE Z-WAVE

Este producto se puede instalar y operar en cualquier red Z-Wave con otros dispositivos Z-Wave certificados de otros fabricantes u otras aplicaciones.

### NOTA DE LA FCC

Este dispositivo cumple con la Sección 15 de la FCC y las normas RSS esenciales de licencia de industria Canadense.

### WARRANTY/GARANTÍA/GARANTIE

Jasco Products Company warrants this product to be free from manufacturing defects for five years from the original date of consumer purchase.

### DECLARATION OF CONFORMITY

Jasco Products Company certifies that this product conforms to the technical specifications of the FCC/IC.

### FCC/IC

Suppliers Declaration of Conformity | Model #: 58438 | Jasco Products Co., 10 E. Memorial Rd, Oklahoma City, OK 73154.

### DECLARATION OF CONFORMITY

Jasco Products Company certifies that this product conforms to the technical specifications of the FCC/IC.

### DECLARATION OF CONFORMITY

Jasco Products Company certifies that this product conforms to the technical specifications of the FCC/IC.

### DECLARATION OF CONFORMITY

Jasco Products Company certifies that this product conforms to the technical specifications of the FCC/IC.

### CYCLE LED

The LED below the dimmer acts as a guide light or status indicator.

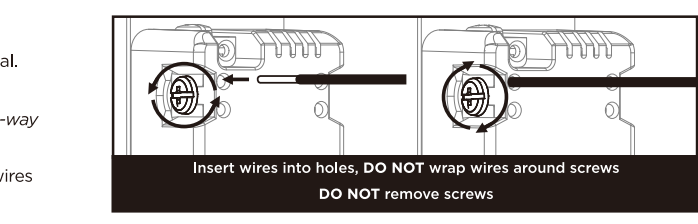
### HOW TO CYCLE THROUGH OPTIONS:

- Press menu button for five seconds
- Press up three times and down one time quickly - indicator flashes blue
- Push the top paddle
  - Once for LED ON when the load is OFF - illuminates orange to confirm
  - Twice for LED ON when the load is ON - illuminates yellow to confirm
  - Three times for always OFF - illuminates pink to confirm
  - Four times for always ON - illuminates purple to confirm
- Press menu button once to save - indicator flashes green twice

### CHANGE LED INDICATOR COLOR

The LED indicator color can be changed from the device.

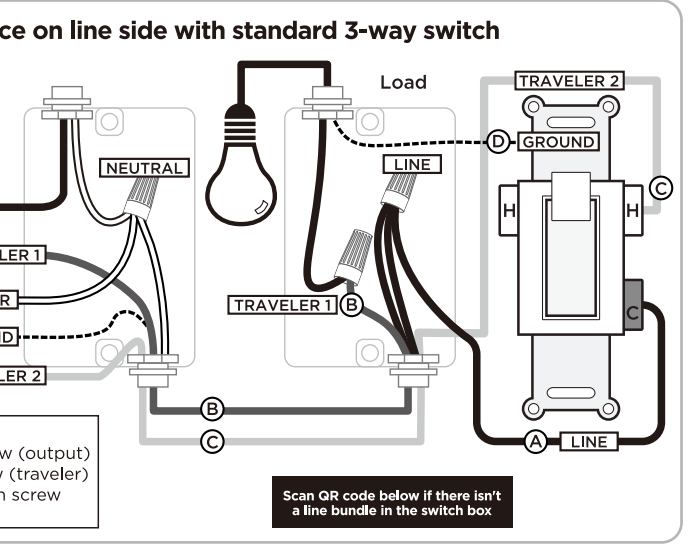
- Press menu button for five seconds
- Press top paddle once and bottom paddle once - LED illuminates in selected color
- Press top or bottom paddle to cycle through color options:
  - Red
  - Orange
  - Yellow
  - Green
  - Blue (default)
  - Pink
  - Purple
  - White
  - Flashes green twice
- Press menu button once to save - indicator flashes green twice



Insert wires into holes, DO NOT wrap wires around screws. DO NOT remove screws.

### STANDARD 3-WAY SWITCH WIRING

Important! The Z-Wave device operates with add-on switches by default. To install it with a standard 3-way switch, follow the steps under standard 3-way switch wiring.



### LINE SIDE (Z-WAVE DEVICE)

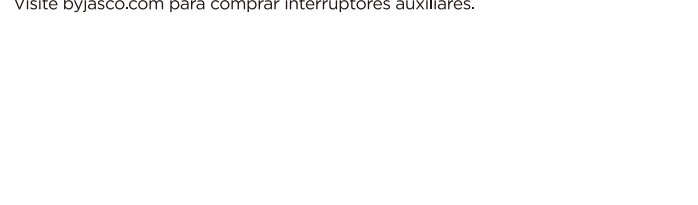
1. Shut off power to the circuit at the circuit breaker or fuse box. 2. Remove line side wallplate.

### 3-WAY CONFIGURATION

The smart device is set to work with add-on switches by default. To use with a standard 3-way switch, follow the steps below.

### ADD-ON SWITCH COMPATIBLE

Enbrighten, UltraPro and JascoPro Series add-on switches support the same features as the Z-Wave device, such as single-, double- and triple-tap functions.



### Z-WAVE INTEROPERABILITY

This device supports association command class (3 Groups). Association Group 1 supports LifeLine, Binary Switch Rocker.

### CONFIGURATION À TROIS VOIES

Par défaut, l'appareil intelligent est configuré pour fonctionner avec des interrupteurs supplémentaires.

### COMPATIBLE AVEC LES INTERRUPTEURS COMPLÉMENTAIRES

Les interrupteurs supplémentaires Enbrighten, UltraPro et JascoPro Series prennent en charge les mêmes caractéristiques que l'appareil Z-Wave.

### INTEROPÉRABILITÉ ENTRE LES DISPOSITIFS Z-WAVE

Cet appareil prend en charge la classe de commandes Association (trois groupes). Le groupe d'association 1 prend en charge la ligne de sécurité et le rapport Binary Switch.

### FABRIQUÉ EN CHINE

Distribué par Jasco Products Company LLC, 10 East Memorial Rd, Oklahoma City, OK 73154. Ce produit est garanti par une garantie limitée de cinq ans.