

Congratulations on your recent purchase of Enbrighten Café Lights. Enbrighten Café Lights are designed to provide lighting for life with no bulbs to replace ever again! Purchase additional lights to form one continuous string up to 750 feet!

IMPORTANT: Before installation, please read all the warning statements included at the bottom of these instructions.

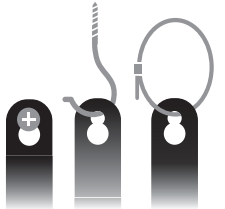
In order to ensure proper installation, please follow each step below:

Step 1 - INITIAL SETUP

- Carefully unpack Café Lights from box. Remove the wire ties (see warning on reverse side).
- When installing Café Lights outside, a Ground Fault Circuit Interrupter (GFCI) receptacle should be used. Before installing, plug the Café Lights into the GFCI receptacle to ensure all lights work properly. **IMPORTANT:** Unplug the Café Lights prior to mounting.

Step 2 - INSTALLING CAFÉ LIGHTS

- IMPORTANT:** Only mount Café Lights to a solid support structure such as joists, beams, studs or other solid mounting surfaces.
- Each Café Light is designed with a universal keyhole for mounting with lights hanging downward. Hardware options include screws, nails, zip ties, hooks and more (not included).
- Use keyhole ear tabs or keyholes to mount power supply.
- Guide wires in compliance with local electrical and building codes may also be used to support Café Lights.
- Once appropriate GFCI outlet location, mounting surface and hardware are determined, mount your Café Lights.
- When finished mounting, place the female receptacle cover firmly over the unused outlet and plug the male plug into the GFCI Receptacle.



- Locate the remote. Remove the back cover of the remote and insert two AAA batteries (included) into the empty compartment. Firmly replace the back cover.
- To power on your Café Lights, press the red ON/OFF button located at the top of the remote. **NOTE:** Keep remote inside when not being used.
- Now that your lights are installed and powered on, take time to explore the following settings that are programmable via your remote:

Single Color Selection Feature

Choose any color and press the corresponding button on the color pad to set all the lights that color.

NOTE: Within this feature, you can also press the dimming button to adjust from 10 different light levels. The dimming option is only available for single- and dual-color selection.

Dual Color Selection Feature

A - Press Color 1, then select a color from the color pad to set the color of every other bulb starting with the first bulb.



- B - Press Color 2, then select a color from the color pad to set the color of every other bulb starting with the second bulb.
- C - During the selection feature, press the dimming button to choose one of 10 different light levels.

Strobe Selection Feature

By pressing the Strobe button, the lights will strobe through all of the colors in a random pattern.

Fade Selection Feature

By pressing the Fade button, the lights will fade in and out through all of the colors in a random pattern.

Modes Selection Feature

Press the "modes" button repeatedly to cycle through the following preset modes:

- Twinkle
- Multi Fade
- Christmas
- St. Patrick's Day
- Red, white and blue
- Fall
- Spring
- Multi

Timer Selection Feature

- A - By pressing the 2 Hour Timer button, you will activate a two-hour countdown until lights turn off.
- B - By pressing the 4 Hour Timer button, you will activate a four-hour countdown until lights turn off.

- Once you have customized your settings and are ready to power off your lights, press the red ON/OFF button located at the top of the remote.

NOTE: Your Café Lights will automatically remember the last customized settings and will turn back on in the same mode and/or color scheme.

Step 3 - INSTALLING MULTIPLE CAFÉ LIGHT SETS

Extend the length of your lights by connecting more than one strand together to form one continuous string up to 750 feet! Simply follow the above installation steps, making sure each connection between strands is secure and that the end female receptacle is securely covered using the receptacle cover.

Available in multiple lengths at www.cafeights.com

Length, feet	Bulbs	Model Number
24	12	
36	18	
48	24	

See below for electrical rating

Step 4 - REMOVING CAFÉ LIGHTS

- Always unplug Café Lights from their receptacle prior to removing.
- Carefully remove each light individually from the mounting hardware. **NOTE:** For your safety, never pull or jerk lights from mounting hardware.
- Store lights in a dry location.

SAVE THESE INSTRUCTIONS

Important — please read:

Refer to the manual or visit www.byjasco.com for limitations and restrictions on warranties and the product registration information.

WARNING: When using outdoors use portable luminaires, basic safety precautions should always be followed to reduce the risk of fire, electrical shock, and personal injury, including the following:

a) Ground Fault Circuit Interrupter (GFCI) protection is to be provided on the circuit(s) or outlet(s) to be used for the wet location portable luminaire. Receptacles are available having built-in GFCI protection and are able to be used for this measure of safety.

b) Use only with an extension cord for outdoor use, such as an extension cord of cord type SEW, SEOW, SEOW, SOW, STW, STOW, STOW, SJEW, SJEOW, SJEOW, SJW, SJOW, SJOW, SJTW, SJTOW, or SJTOW.

WARNING: Keep these bags away from babies and children. Do not use in cribs, beds, carriages, or playpens. The thin film may cling to nose and mouth and prevent breathing.

NOTE: Ensure the Café Light's receptacle cover is firmly installed and well seated when not being used to connect additional strings.

Warranty Information: This Jasco product is warranted for three (3) years with a limited-lifetime replacement warranty on Enbrighten LED light source only.

MADE IN CHINA
Distributed by Jasco Products Company LLC
10 E. Memorial Rd., Oklahoma City, OK 73114.

This Jasco product comes with a 3-year limited warranty.

Visit www.byjasco.com for warranty details.

Questions? Contact us at 1-800-654-8483 between 7:00AM-8:00PM CST.

Patents pending | www.cafeights.com



Version 3
4/4/17

This device complies with part 15 of the FCC and Industry Canada license-exempt RSS standard(s). Operation is subject to the following two conditions: (1) this device may not cause harmful interference, and (2) this device must accept any interference received, including interference that may cause undesired operation.

FCC NOTE: The manufacturer is not responsible for any radio or TV interference caused by unauthorized modifications to this equipment. Such modifications could void the user's authority to operate the equipment.

NOTE: This equipment has been tested and found to comply with the limits for a Class B digital device, pursuant to Part 15 of the FCC Rules. These limits are designed to provide reasonable protection against harmful interference in a residential installation. This equipment generates, uses and can radiate radio frequency energy and, if not installed and used in accordance with the instructions may cause harmful interference to radio communications. However, there is no guarantee that interference will not occur in a particular installation. If this equipment does cause harmful interference to radio or television reception, which can be determined by turning the equipment off and on, the user is encouraged to try to correct the interference by one or more of the following measures:

- Reorient or relocate the receiving antenna.
- Increase the separation between the equipment and receiver.
- Connect the equipment into an outlet on a circuit different from that to which the receiver is connected.
- Consult the dealer or an experienced radio/TV technician for help.

Requires 2AAA* batteries. Observe polarity markings (+), (-).

CAUTION

- BATTERIES MAY LEAK HARMFUL LIQUIDS OR CONTAIN FLAMMABLE MATERIALS OR EXPLOSIVE CARTRIDGE PLAY AND PRODUCT DAMAGE.
- DO NOT MIX OLD AND NEW OR OTHER BATTERY TYPES.
- REPLACE ALL BATTERIES AT THE SAME TIME.
- REPLACE EXHAUSTED BATTERIES PROMPTLY.
- REMOVE BATTERIES FROM PRODUCT TO BE UNPLUGGED FOR EXTENDED PERIODS OF TIME.

Electrical Ratings

Input: 120 V, 50/60 Hz

Model No.	Input watt. Max.	Location Use
RGB/24/12/18/2	10W	Wet
RGB/36/18/18/2	15W	

WARNING

RISK OF ELECTRIC SHOCK

- RECEPTACLE OUTLETS USED FOR POWERING CAFE LIGHTS SHALL COMPLY WITH ALL NATIONAL AND LOCAL ELECTRICAL CODES. CONSULT LOCAL ELECTRICAL INSURANCE OF COMPLIANCE REQUIREMENTS.
- FOR USE ONLY ON GFCI PROTECTED CIRCUITS.
- DO NOT SUBMERGE.
- DO NOT USE AROUND AQUARIUMS.
- CAFE LIGHTS ARE A WET LOCATION PRODUCT AND HAVE NO SERVICEABLE PARTS.
- DO NOT USE WITH EXTENSION CORD NEAR WATER OR WHERE WATER MAY ACCUMULATE.
- KEEP LAMPS AT LEAST 6 FEET FROM POOLS AND SPA'S.
- KEEP PLUGS AND RECEPTACLES DRY.
- AVOID DAMAGE TO THE CORDS AND LAMP ASSEMBLIES DURING INSTALLATION. PERIODICALLY INSPECT THE CAFE LIGHTS FOR PHYSICAL DAMAGE OR OTHER DAMAGE CAUSED BY OUTDOOR EXPOSURE TO THE ELEMENTS.
- REPLACE ANY DAMAGED CAFE LIGHT STRINGS.
- DO NOT INSTALL IN LOCATIONS WHERE CAFE LIGHTS CAN BE STEPPED ON.
- ENSURE CAFE LIGHTS ARE UNPLUGGED FROM POWER DURING INSTALLATION.
- CAFE LIGHTS SHOULD BE KEPT OUT OF THE REACH OF CHILDREN OR NOT ALLOWING CHILDREN TO PLAY WITH THEM.
- IT IS RECOMMENDED TESTING GFCI CIRCUITS AND RECEPTACLES EVERY MONTH TO ENSURE PROPER OPERATION.
- DO NOT OPERATE WITHOUT BULB SECURELY SCREWED IN.

RISK OF FIRE

- CAFE LIGHTS ARE DESIGNED TO BE MOUNTED WITH THEIR INDIVIDUAL KEYHOLE MOUNTING FEATURE. DO NOT MOUNT CAFE LIGHTS BY USING THE MAIN ELECTRICAL LOAD OR THE INDIVIDUAL PAPER CORDS.
- CAFE LIGHTS ARE DESIGNED TO BE LINKED BY USING THEIR ELECTRICAL PLUGS AND RECEPTACLES TO A MAXIMUM DISTANCE OF 300 FEET.
- CAFE LIGHT INTERCONNECTIONS RECEPTACLES ARE INTENDED ONLY FOR THE LINKING OF COMPARABLE CAFE LIGHT STRINGS. DO NOT USE CAFE LIGHT RECEPTACLES FOR ANY OTHER ELECTRICAL PURPOSES.
- DO NOT MOUNT CAFE LIGHTS IN ANY POSITION WHERE THE BULB IS FACING UP.
- DO NOT ALLOW THE LED LAMP ASSEMBLIES TO BE IN CONTACT WITH COMBUSTIBLE MATERIALS. LED LAMP ASSEMBLIES SHOULD HANG FREELY AND NOT BE SUSCEPTIBLE TO REPETITIVE DAMAGE CAUSED BY ENVIRONMENTAL CONDITIONS SUCH AS WIND, RAIN, AND I.C.E.
- NOT INTENDED FOR INSTALLATION IN CEILING, SOFFITS, CABINETS, ATTICS, OR OTHER ENCLOSED SPACES.