

enbrighten®

Wi-Fi Smart LED Bulb

Model - WFD7107
SKU-51338, 51339, 51340



Standard E26 base

- Light pairing modes
- Flashing quickly - auto pairing
 - Flashing slowly - manual pairing

Remotely operate your smart bulb with the easy-to-use Enbrighten app. Follow the available instructions and resources to set up your smart device.

1

Download the app



Scan the QR code above or search Enbrighten on the Apple App Store or on Google Play



2

Set up account



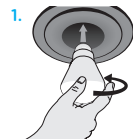
Create an account in the Enbrighten app

Add devices, control the smart bulb from anywhere and create schedules

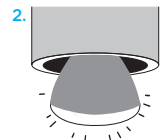
3

Install the smart device

Turn OFF power at the switch before installation



Screw in the smart bulb to a standard indoor light fixture



Power switch for the lamp or light fixture must be ON

4

Voice control

Compatible with Amazon Alexa and Google Assistant



Follow the steps in the Amazon Alexa or Google Assistant app to connect the Enbrighten app or select "Support" in the Enbrighten app.

Instructions made easy



Read instructions or watch easy-to-follow video.

Scan code or visit byjasco.com/51338i

Exclusive deals



For deals, to register your purchase and to tell us how we're doing, simply scan the code or visit byjasco.com/deals



Home automation is in your palm with Wi-Fi smart devices and accessories at www.enbrightenwifi.com



Like our product?

Leave a review on your favorite retailer website or amazon.com



Having problems?

Let us know how we can help. Call 1-800-654-8483 between 7AM-8PM, M-F, Central Time.

⚠ WARNING

- NOT FOR EMERGENCY LIGHTING
- RISK OF ELECTRIC SHOCK
- RISK OF FIRE
- RISK OF BURNS
- DO NOT USE WHERE DIRECTLY EXPOSED TO WATER
- DO NOT USE WITH STANDARD DIMMERS
- NOT FOR USE IN TOTALLY ENCLOSED LUMINARIES
- DO NOT USE WITH MEDICAL AND LIFE-SUPPORT INSTRUMENTS

09/21/2021 v1

FCC Declaration of Conformity is available on the support page in the Enbrighten app.

App Store is a service mark of Apple Inc. Google and Google Play are trademarks of Google LLC. Amazon, Alexa and all related logos are trademarks of Amazon.com, Inc. or its affiliates.

MADE IN CHINA

Distributed by Jasco Products Company LLC, 10 E. Memorial Rd., Oklahoma City, OK 73114.

This Jasco product comes with a 5-year limited warranty. Visit www.byjasco.com for warranty details.

Questions? Contact our U.S.-based Consumer Care at 1-800-654-8483 between 7AM-8PM, M-F, Central Time.



BY
JASCO®

This device complies with Part 15 of the FCC Rules / Industrie Canada licence-exempt RSS standard(s). Operation is subject to the following two conditions: (1) this device may not cause harmful interference, and (2) this device must accept any interference received, including interference that may cause undesired operation.

Le présent appareil est conforme aux CNR d'Industrie Canada applicables aux appareils radio exempts de licence. L'exploitation est autorisée aux deux conditions suivantes : (1) l'appareil ne doit pas produire de brouillage, et (2) l'utilisateur de l'appareil doit accepter tout brouillage radioélectrique subi, même si le brouillage est susceptible d'en compromettre le fonctionnement.

Changes or modifications not expressly approved by the party responsible for compliance could void the user's authority to operate the equipment.

This equipment has been tested and found to comply with the limits for a Class B digital device, pursuant to part 15 of the FCC Rules. These limits are designed to provide reasonable protection against harmful interference in a residential installation. This equipment generates uses and can radiate radio frequency energy and, if not installed and used in accordance with the instructions, may cause harmful interference to radio communications. However, there is no guarantee that interference will not occur in a particular installation. If this equipment does cause harmful interference to radio or television reception, which can be determined by turning the equipment off and on, the user is encouraged to try to correct the interference by one or more of the following

- measures:
- Reorient or relocate the receiving antenna.
 - Increase the separation between the equipment and receiver.
 - Connect the equipment into an outlet on a circuit different from that to which the receiver is connected.
 - Consult the dealer or an experienced radio/TV technician for help.

To satisfy FCC / IC RF exposure requirements, a separation distance of 20 cm or more should be maintained between the antenna of this device and persons during device operation.

To ensure compliance, operations at closer than this distance is not recommended.

Les antennes installées doivent être situées de façon à ce que la population ne puisse y être exposée à une distance de moins de 20 cm. Installer les antennes de façon à ce que le personnel ne puisse approcher à 20 cm ou moins de la position centrale de l'antenne.

La FCC des États-Unis stipule que cet appareil doit être en tout temps éloigné d'au moins 20 cm des personnes pendant son fonctionnement.