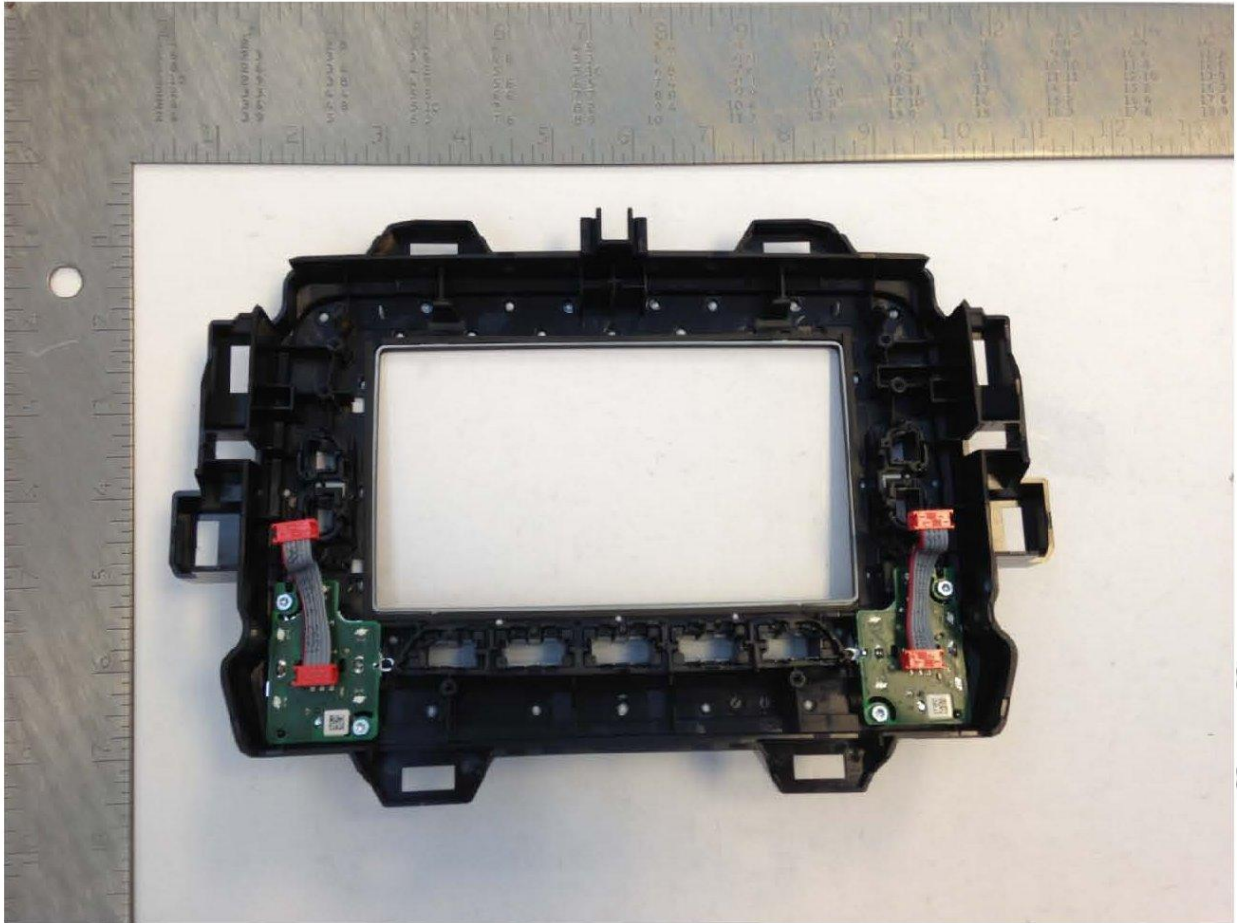


Display Bezel – Front View



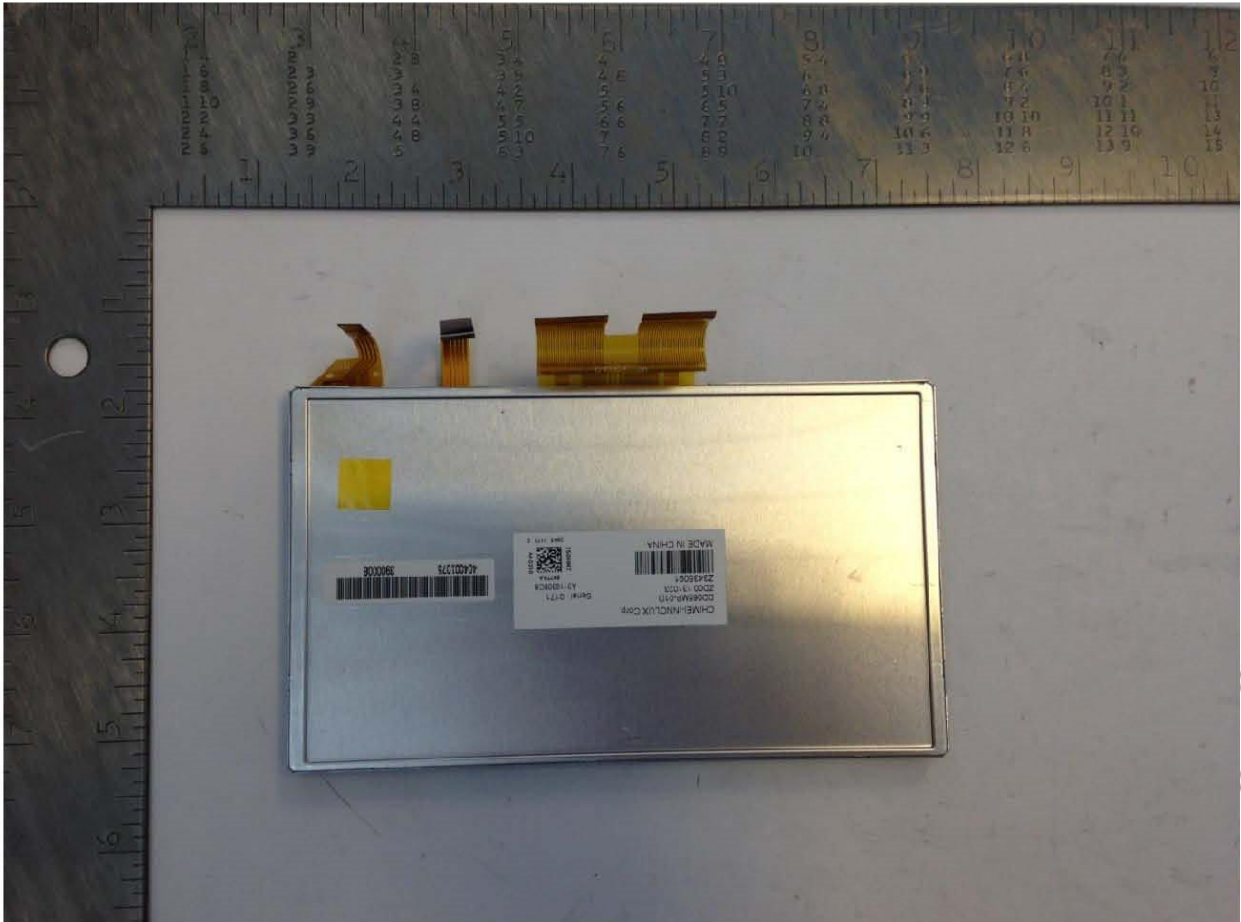
Display Bezel – Back View



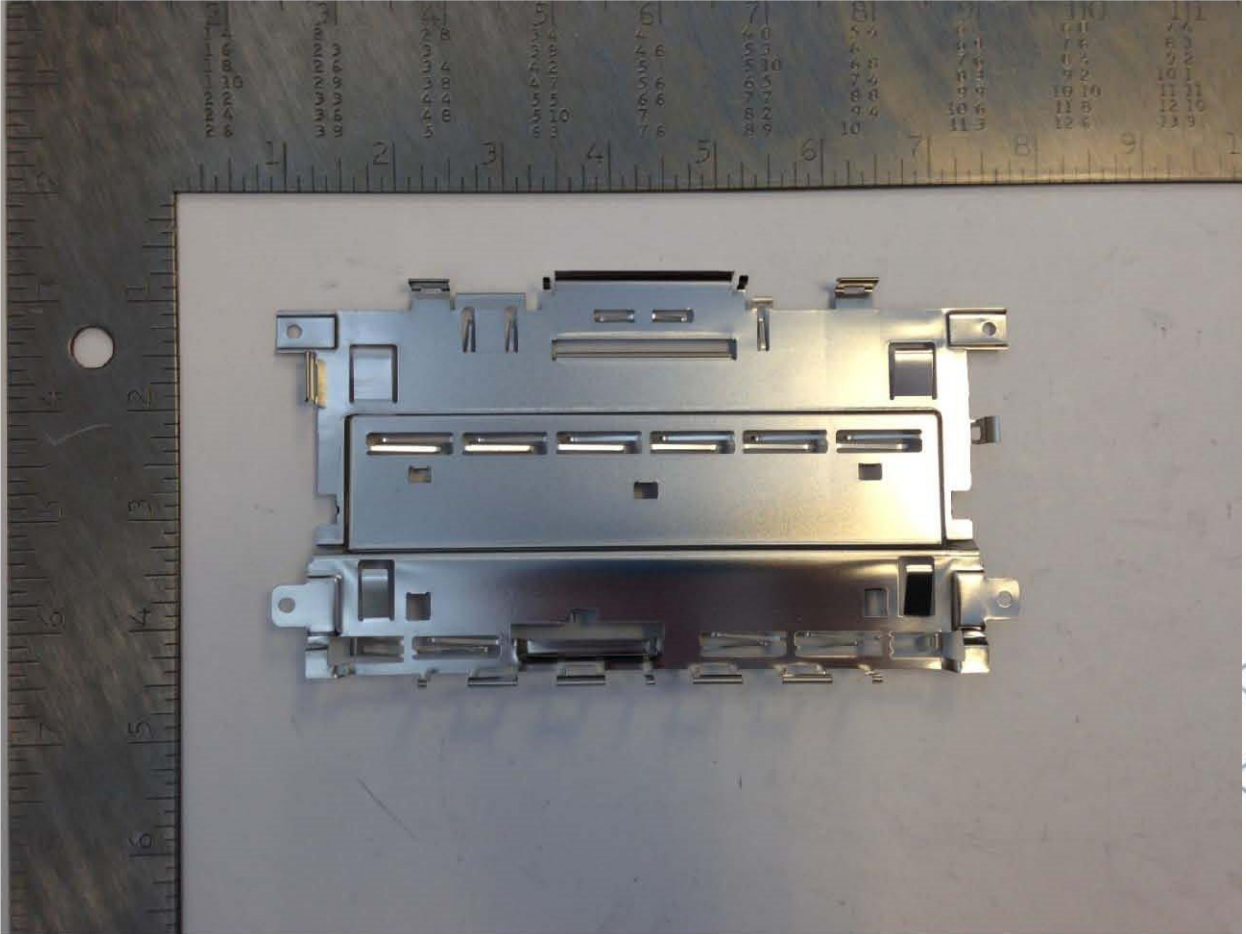
Display – Front View



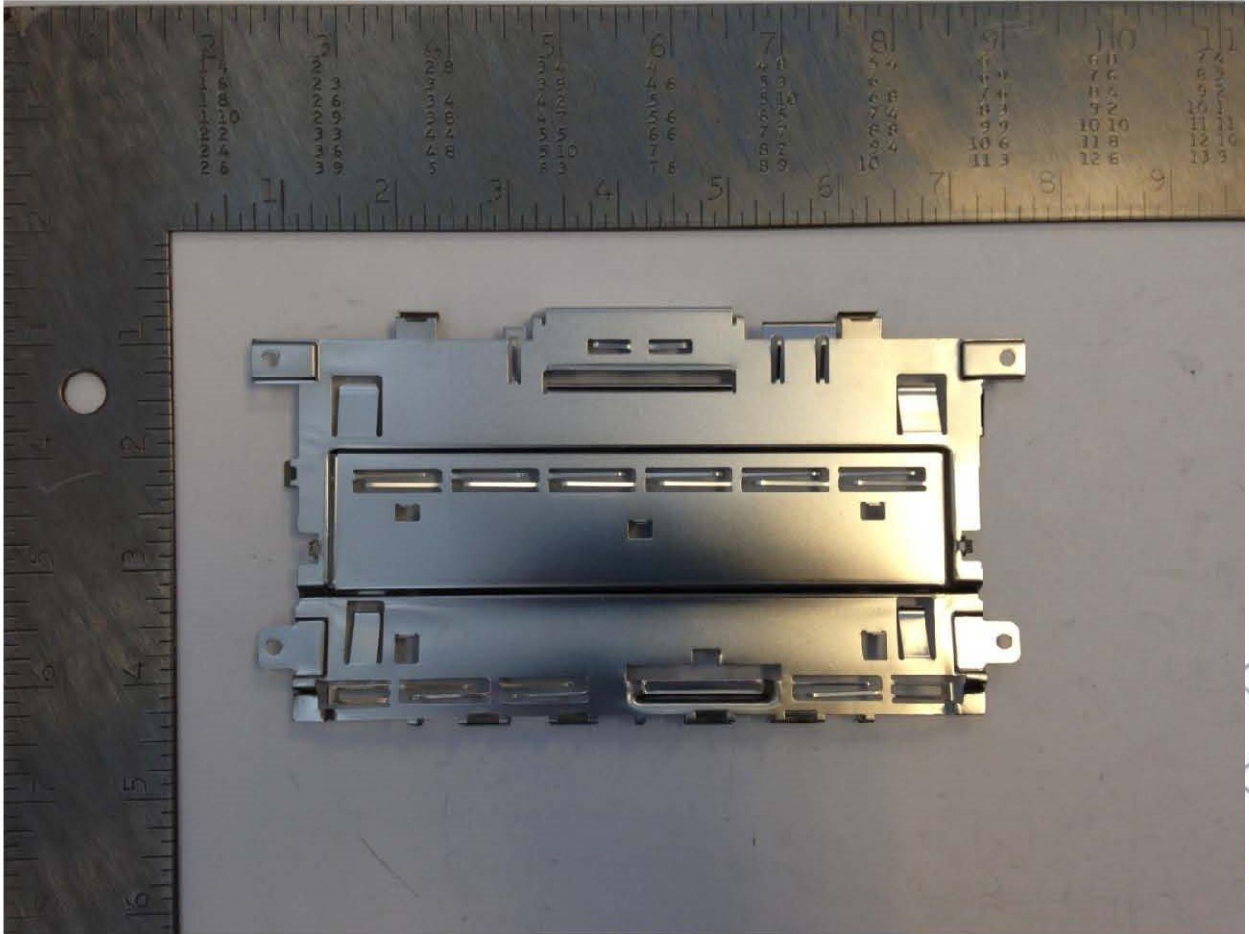
Display – Back View



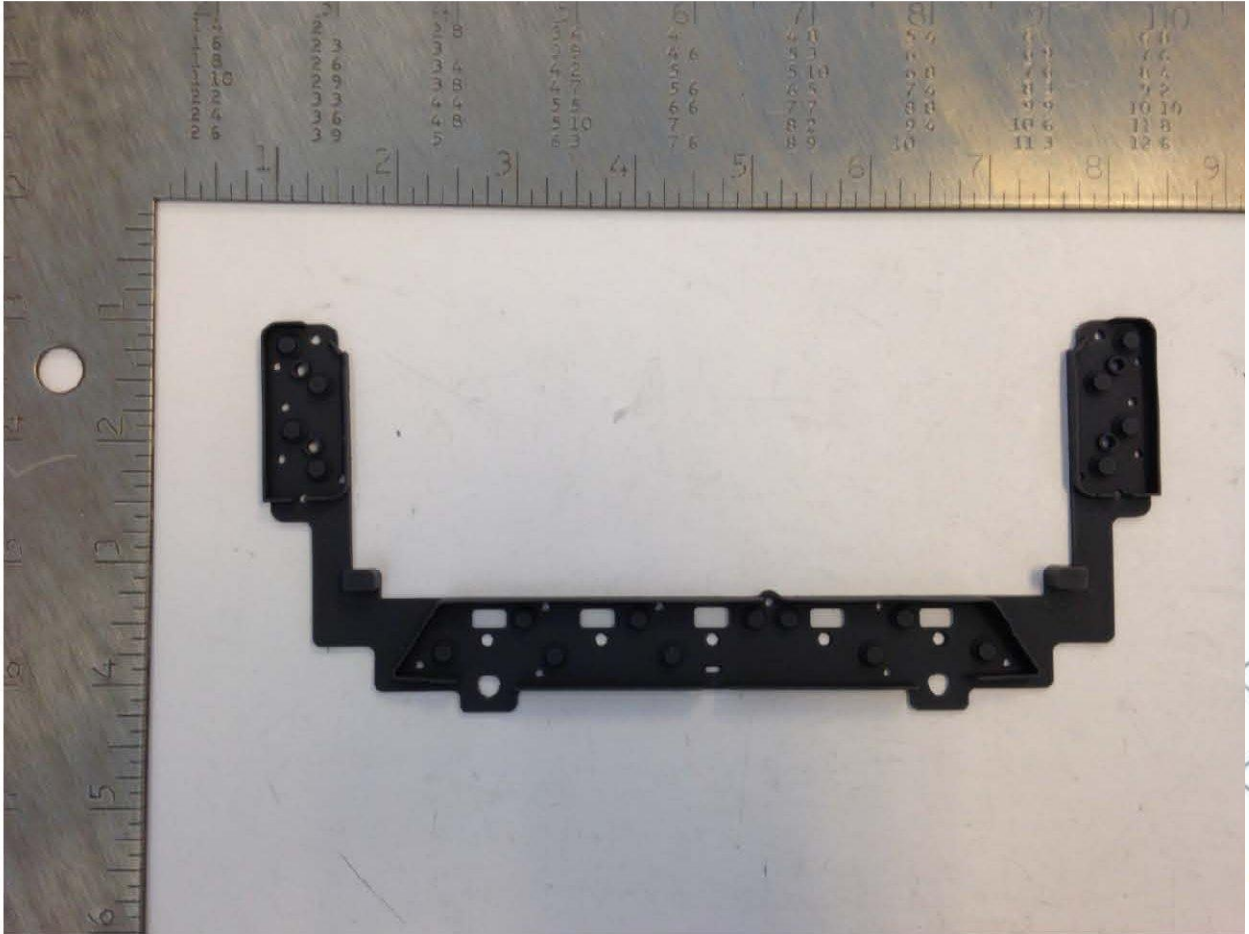
Display Shield – Front View



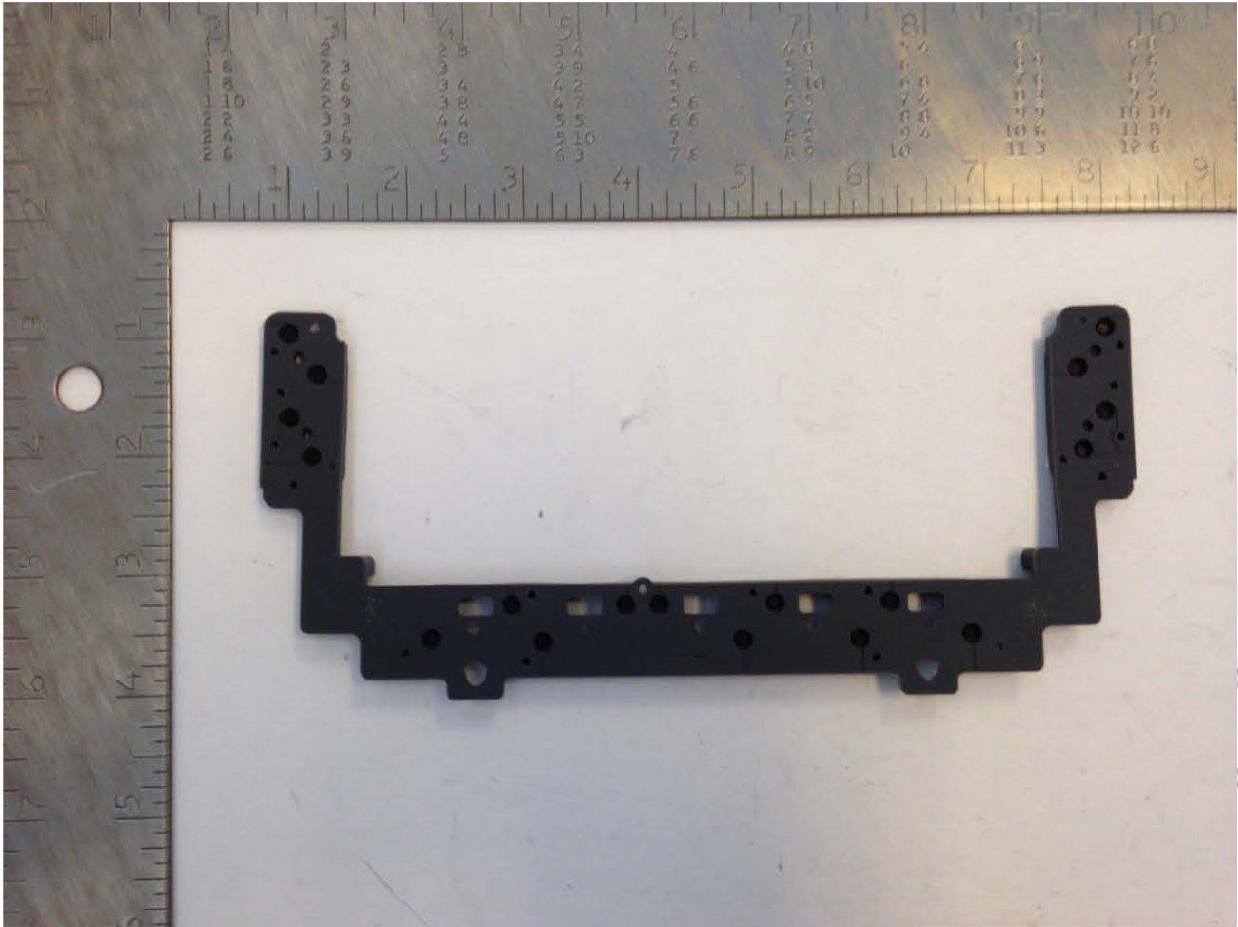
Display Shield – Back View



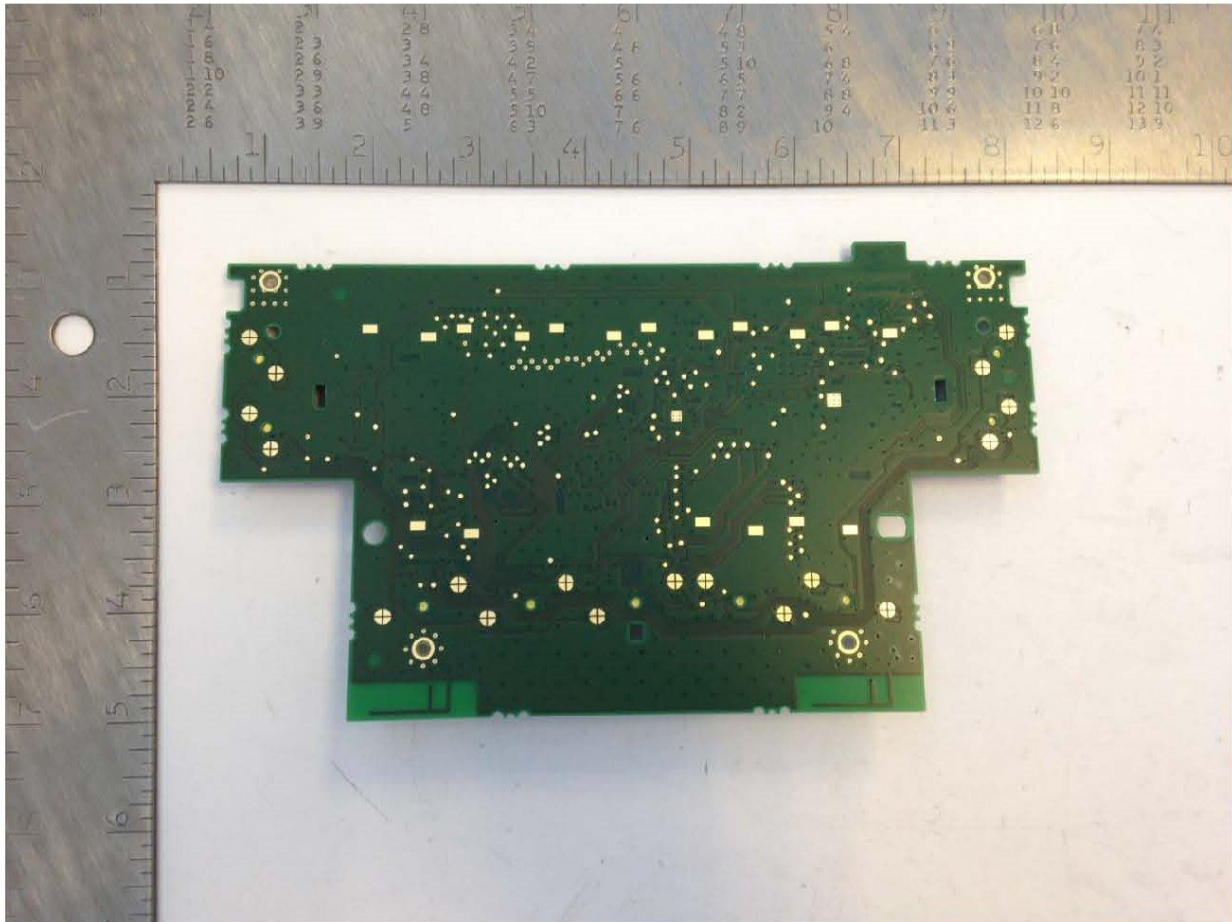
Display and Button Pad – Front View



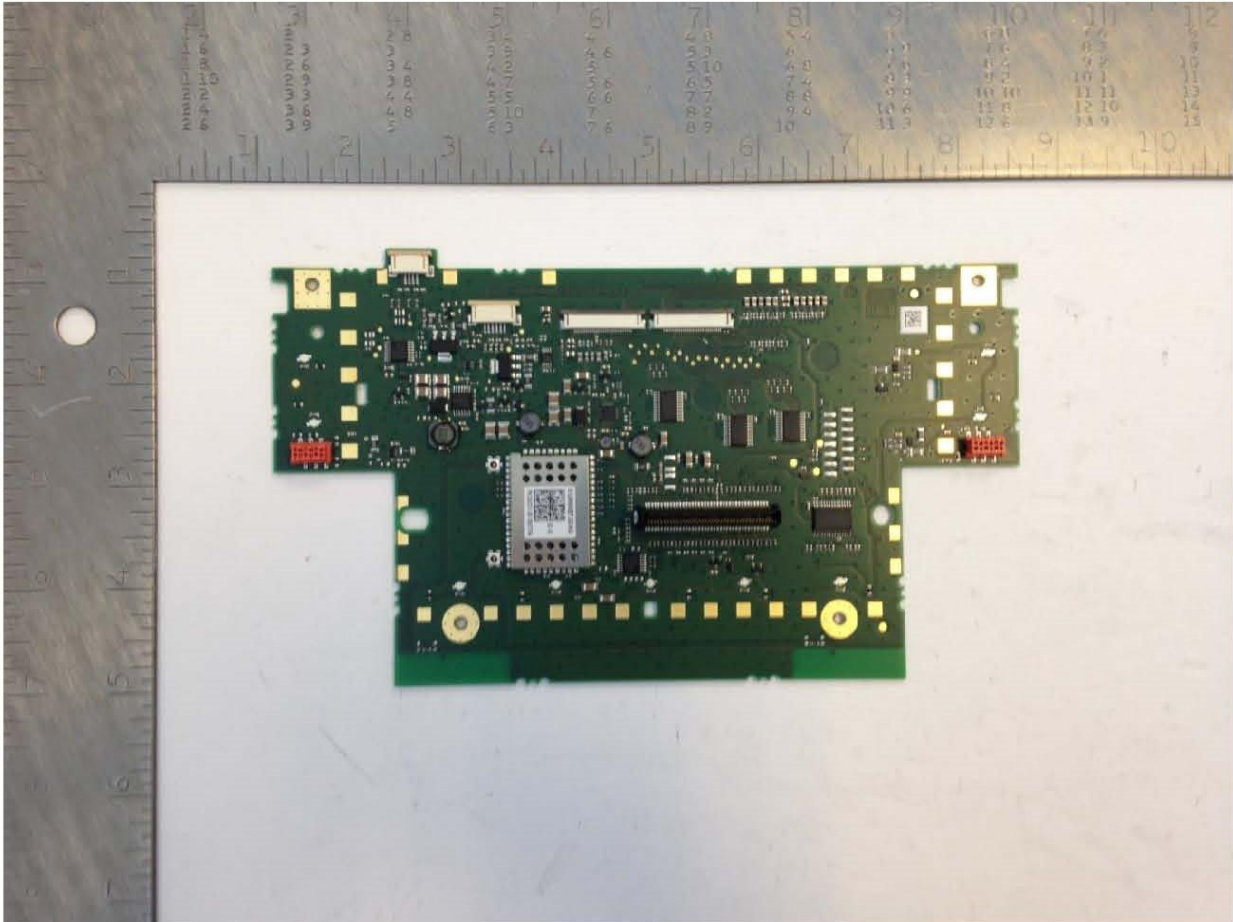
Display and Button Pad – Back View



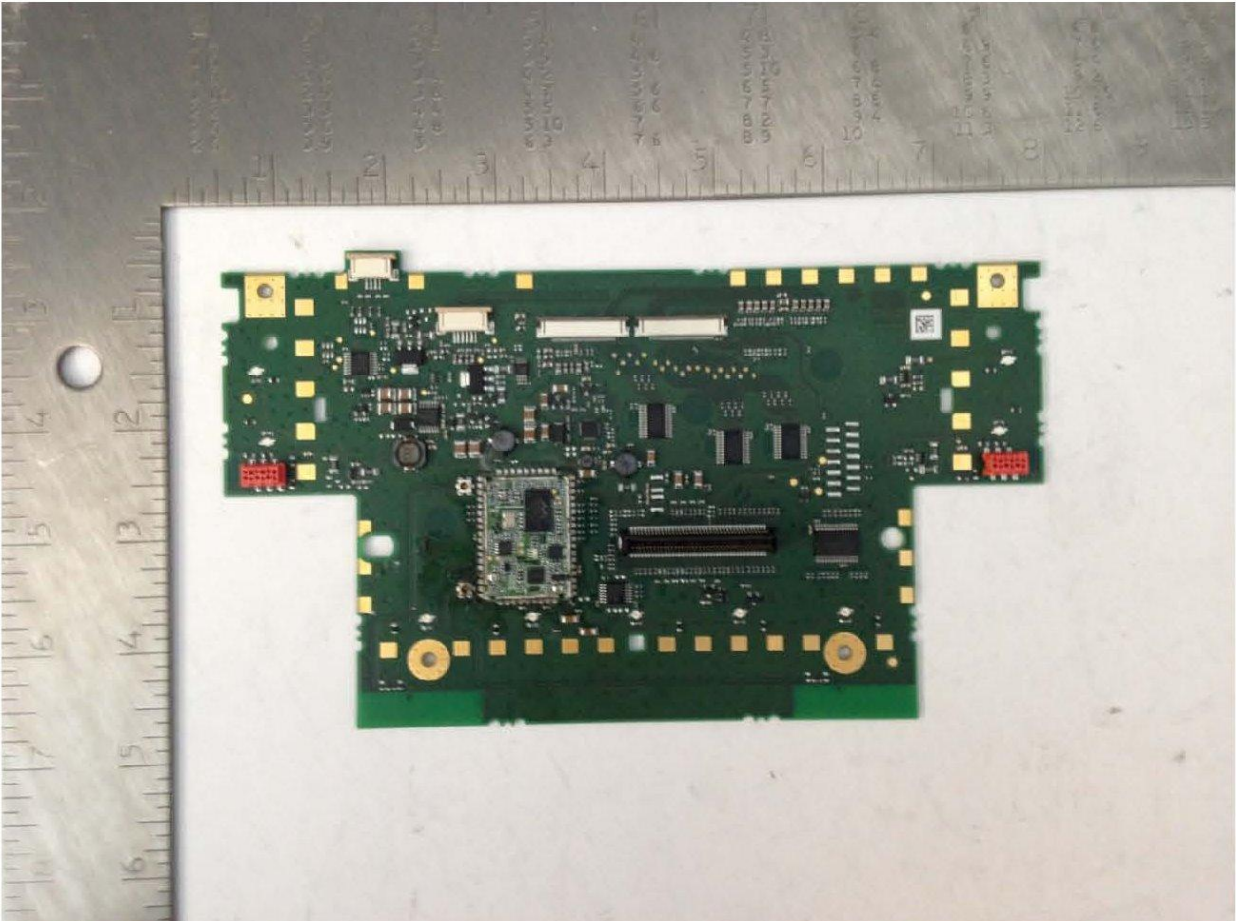
Front Panel Board Assembly – Front View



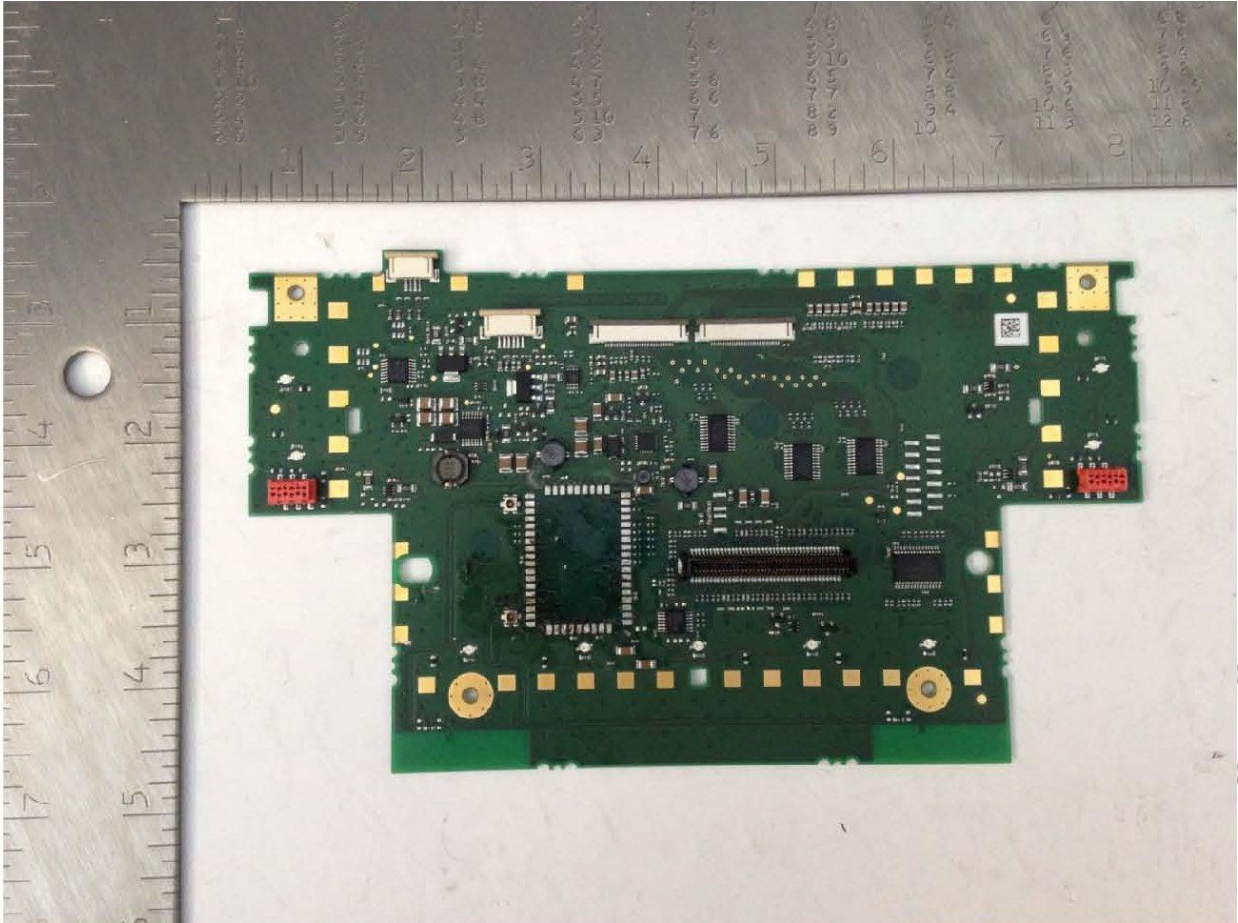
Front Panel Board Assembly – Back View



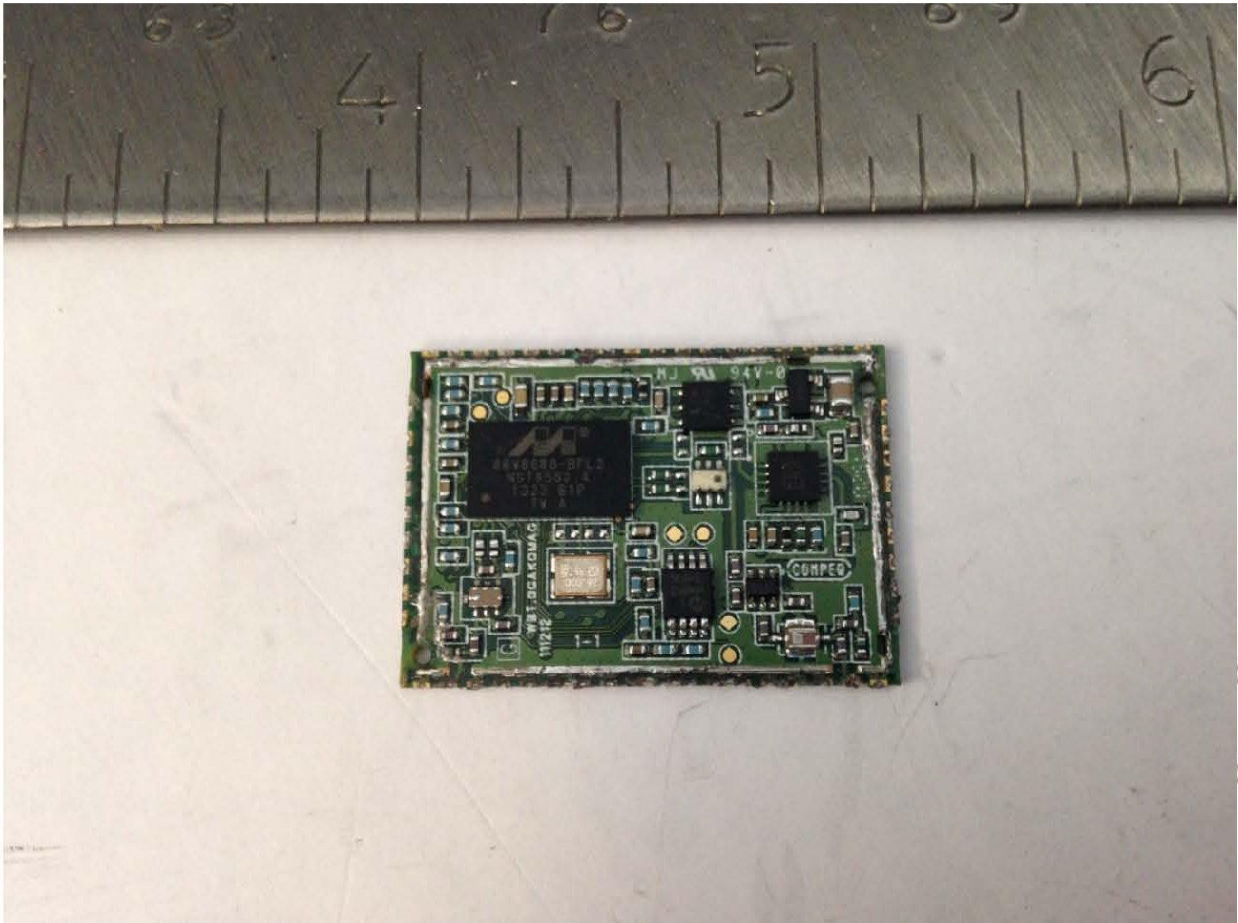
Front Panel Board Assembly – Back View with EMC Shield Removed



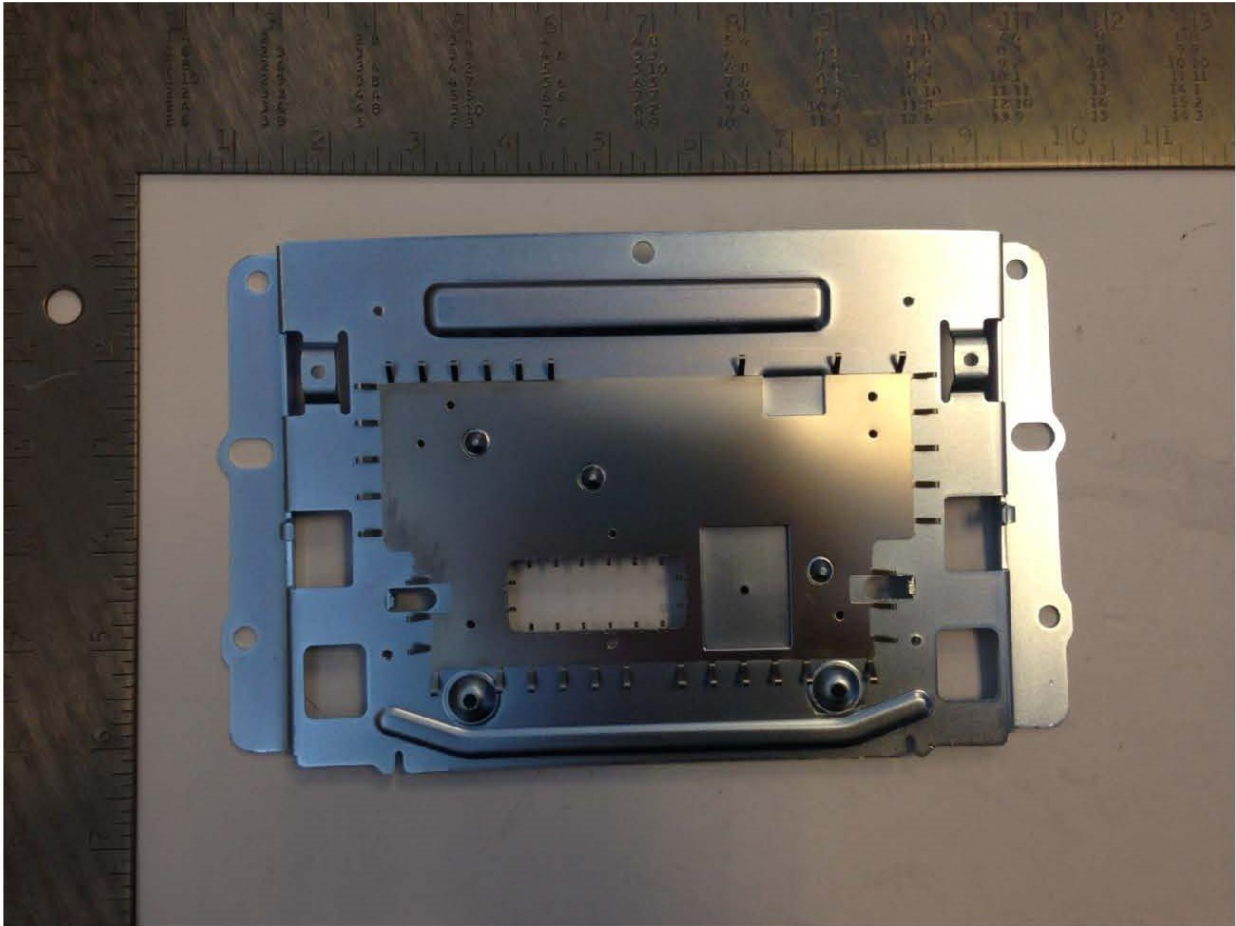
Front Panel Board Assembly – Back View with BT and Wifi Removed



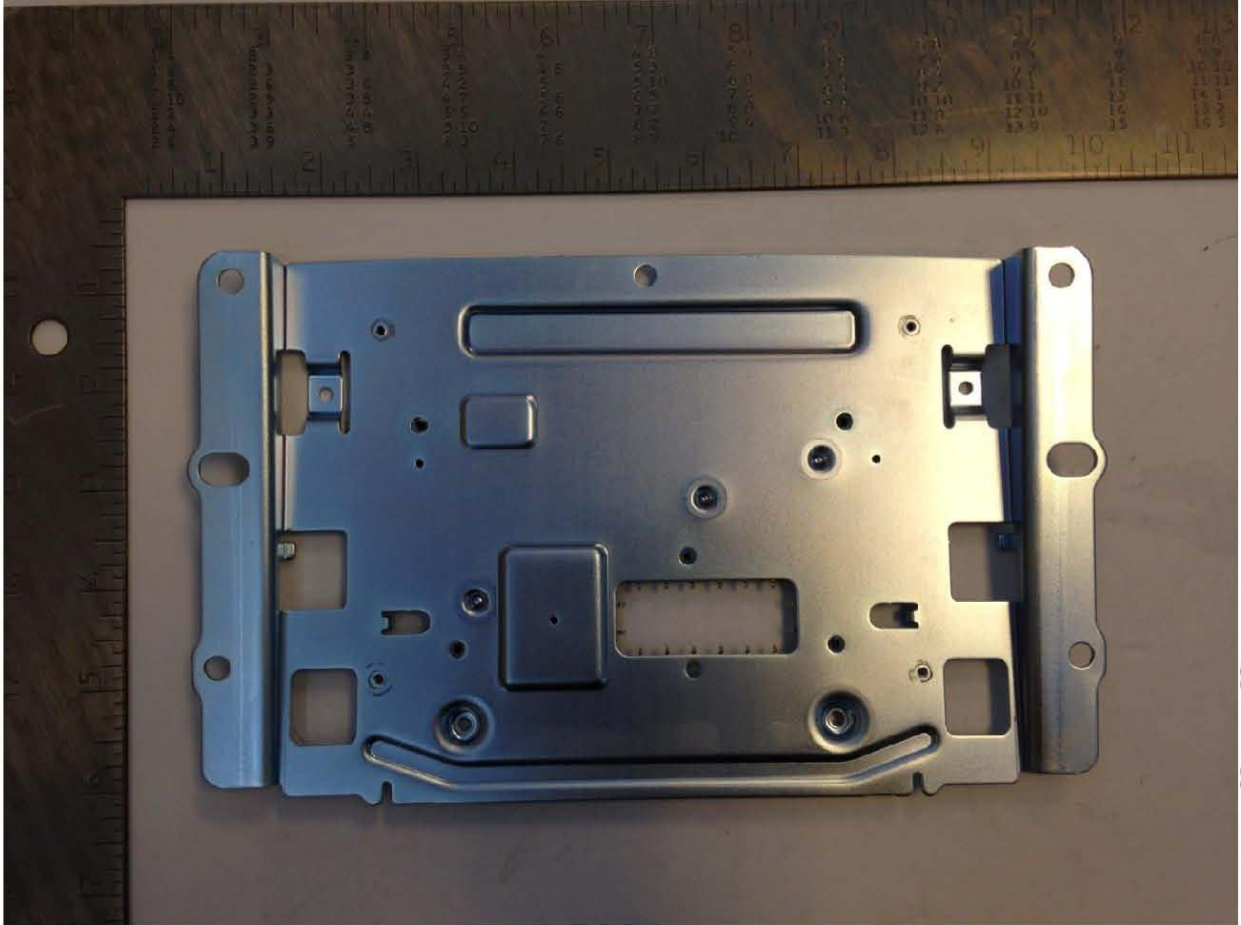
Bluetooth and Wifi Module



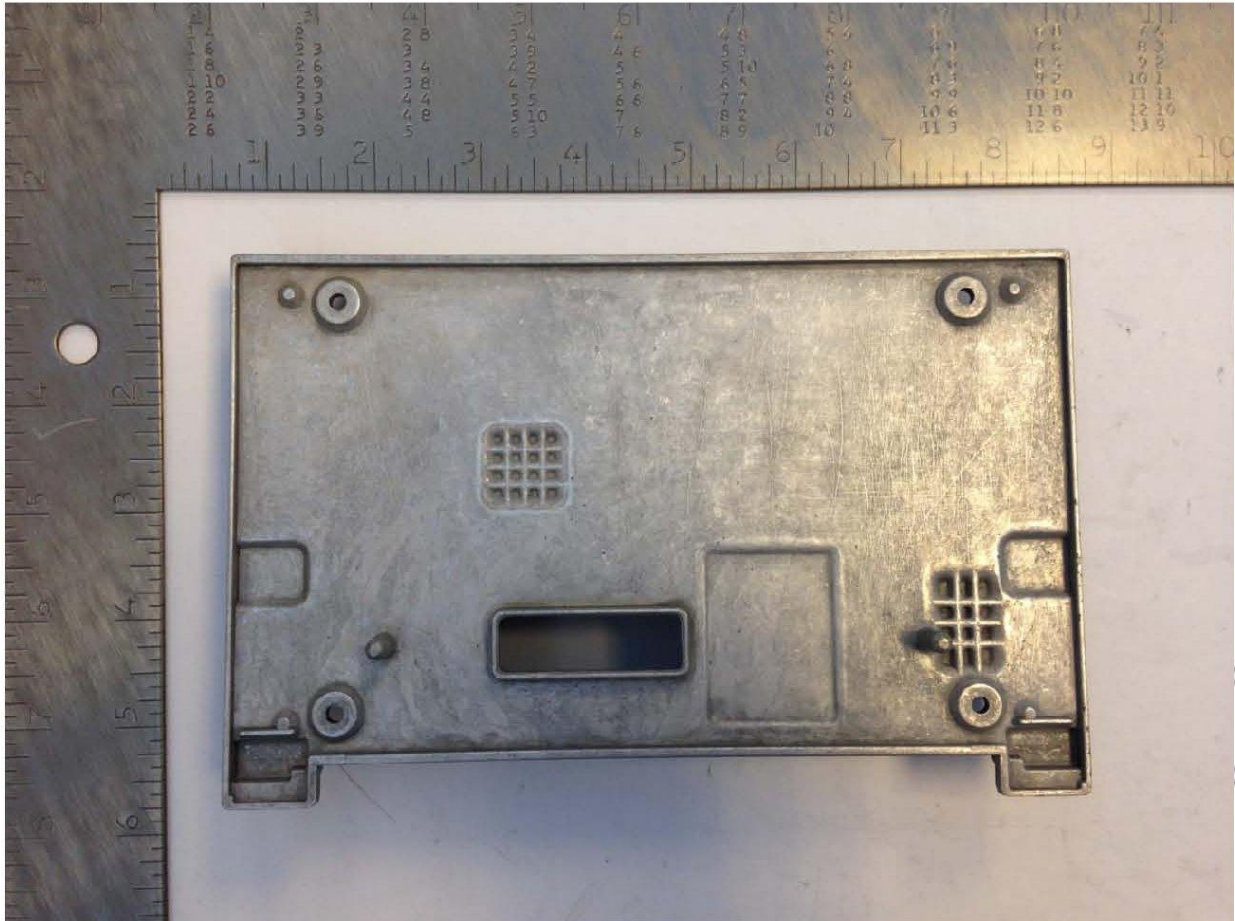
Mounting Bracket – Front View



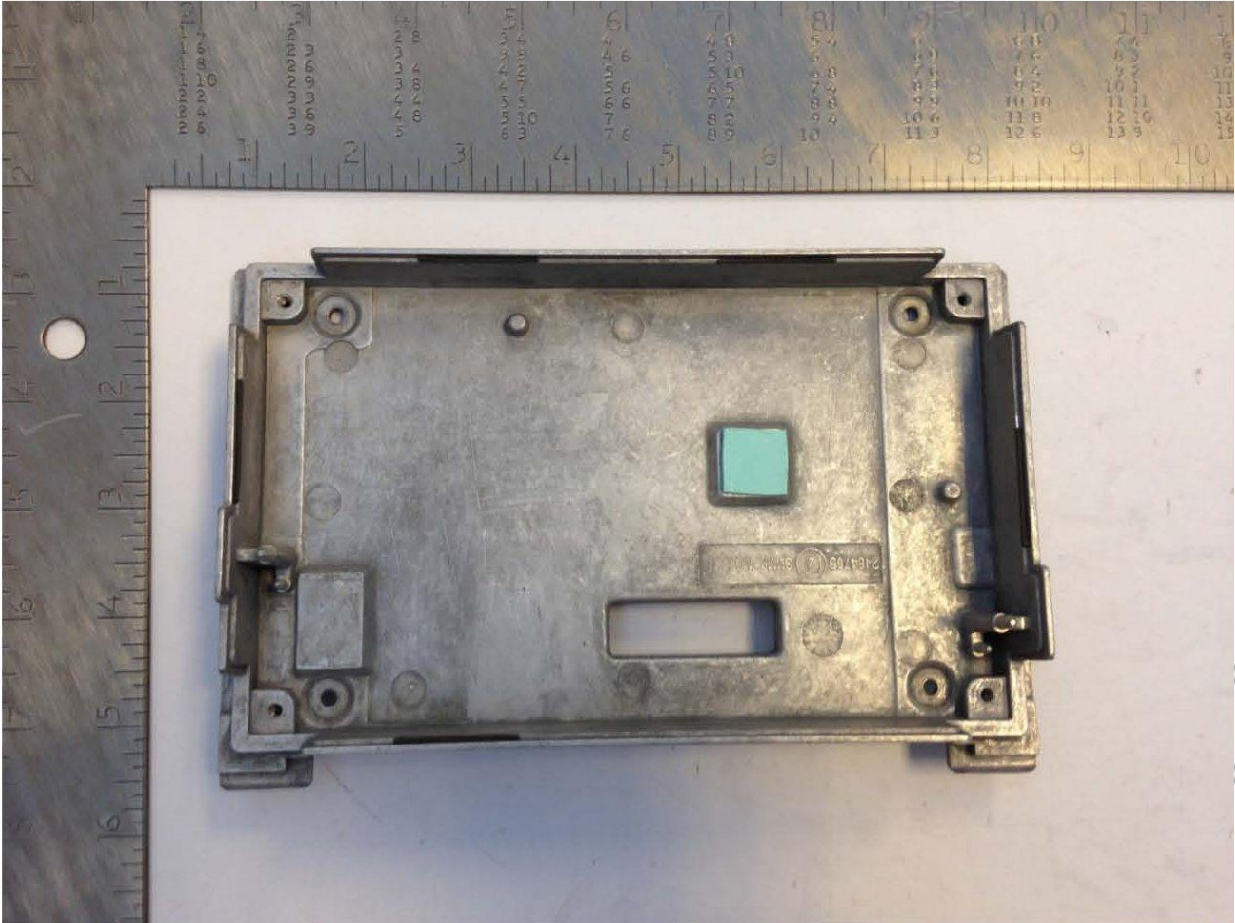
Mounting Bracket – Back View



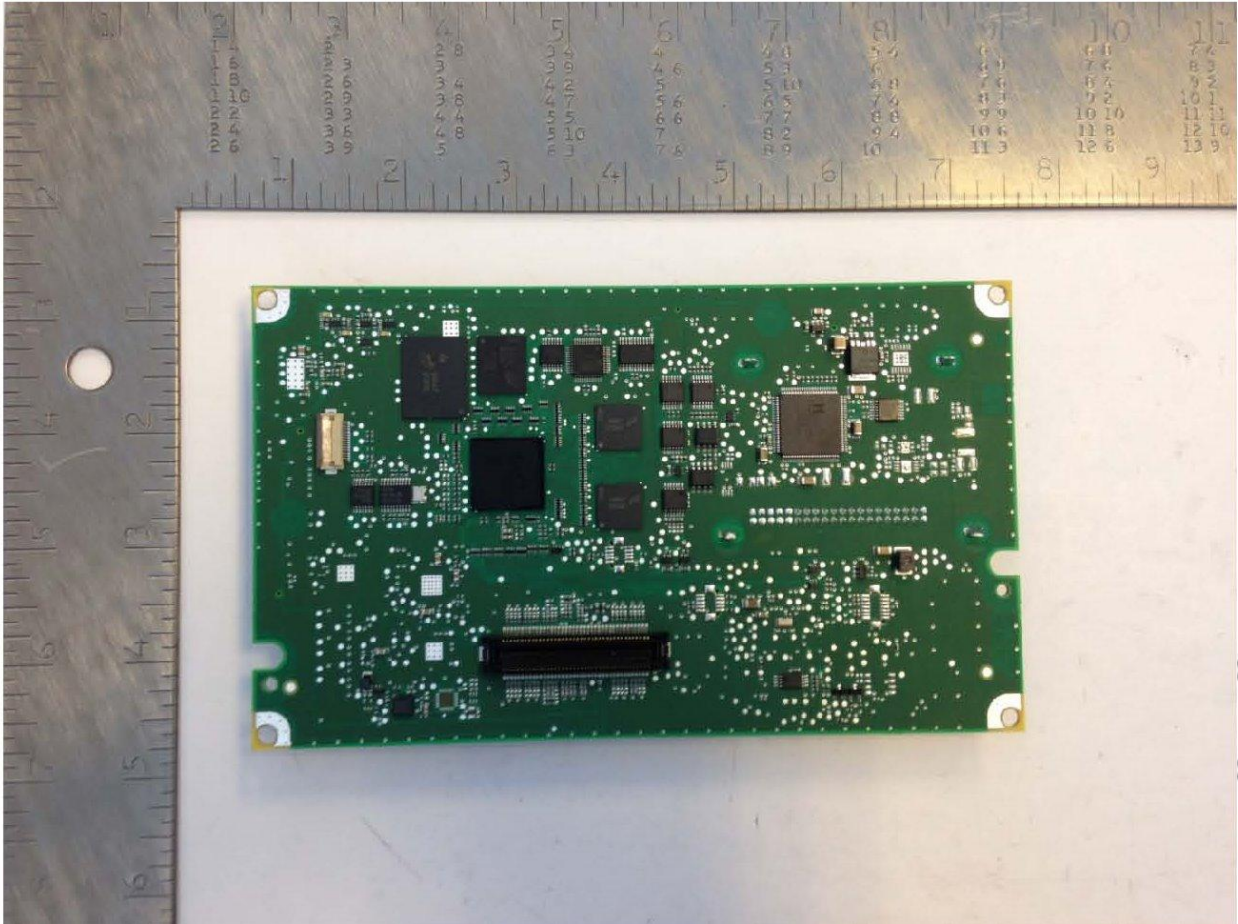
Front Casting – Front View



Front Casting – Back View



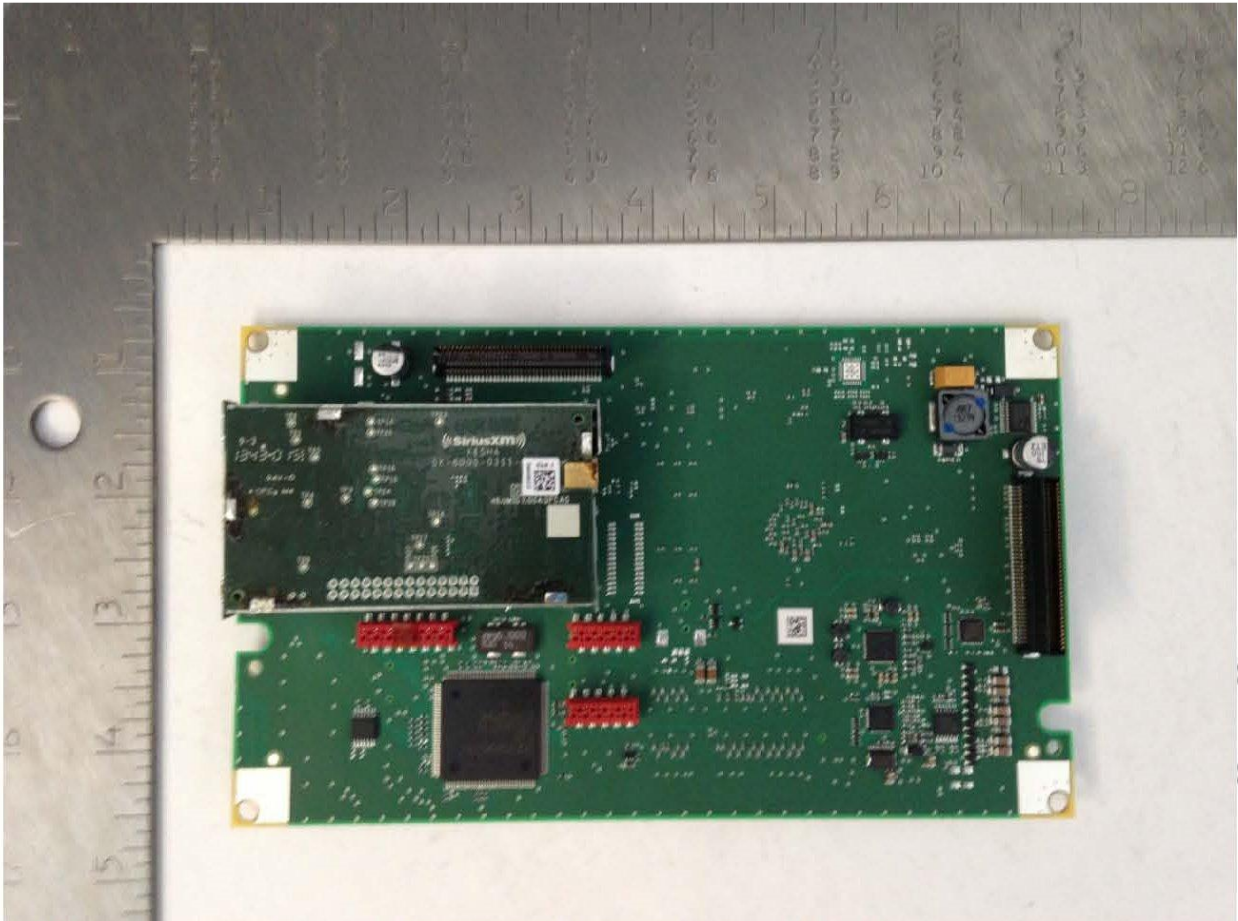
Main Board Assembly – Front View



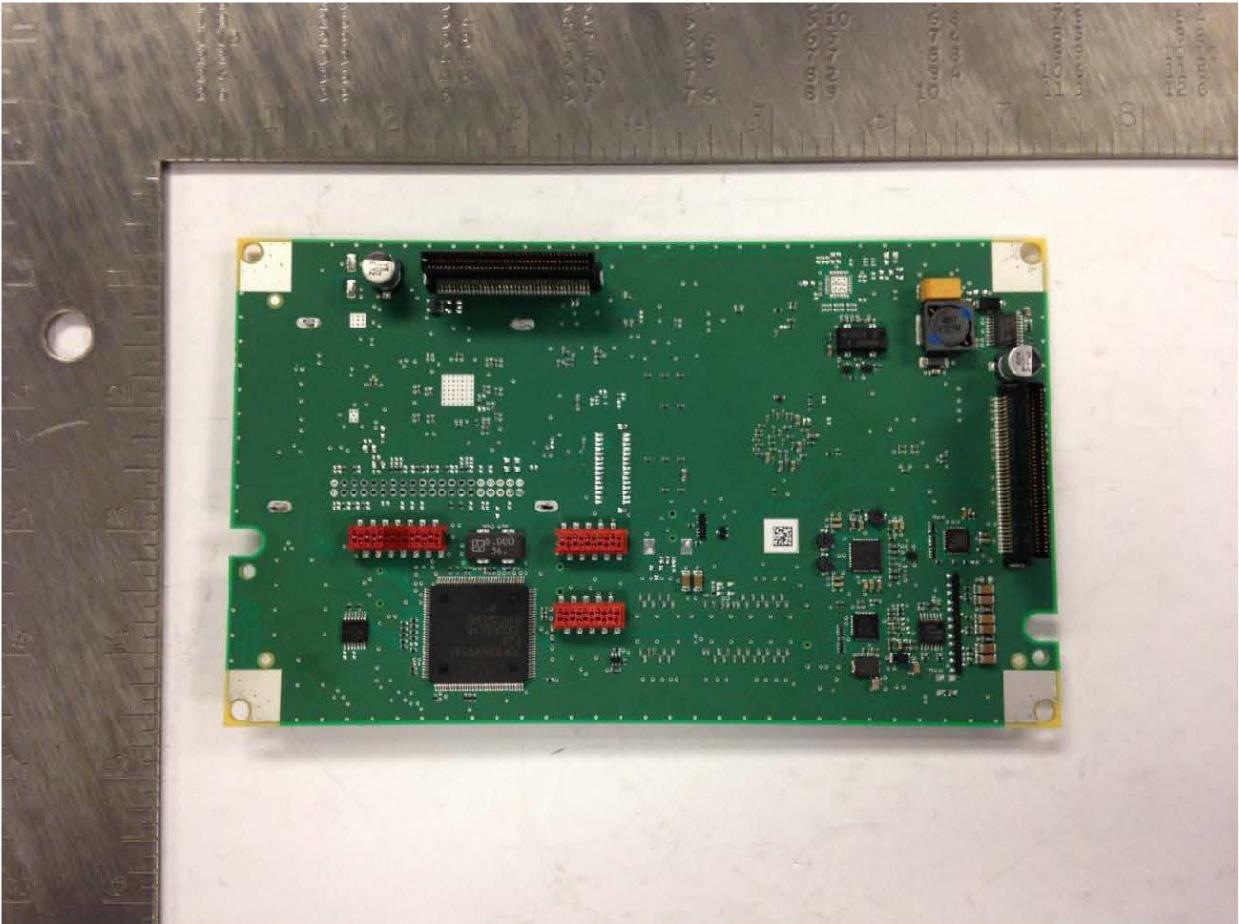
Main Board Assembly – Back View



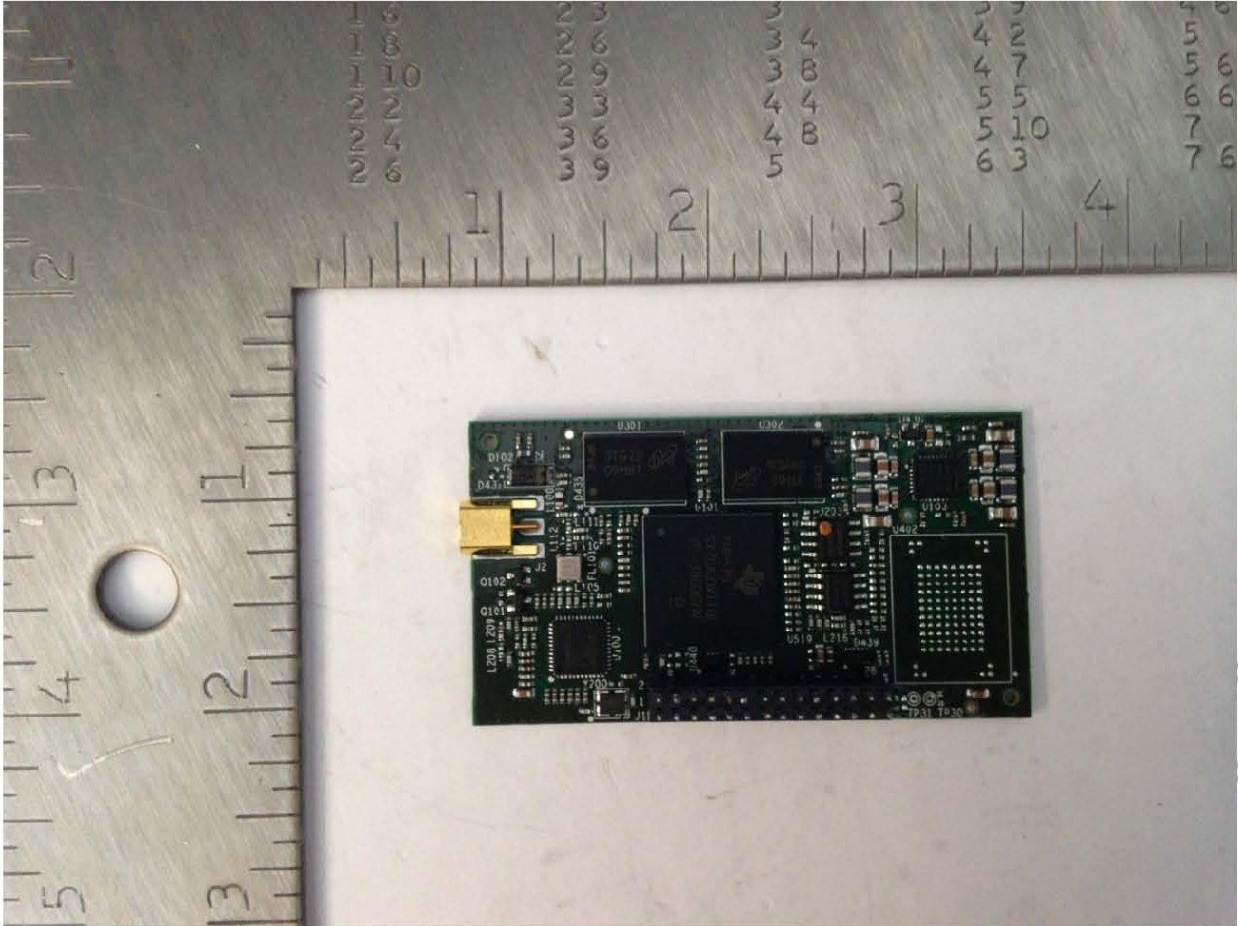
Main Board Assembly – Back View with EMC Shield Removed



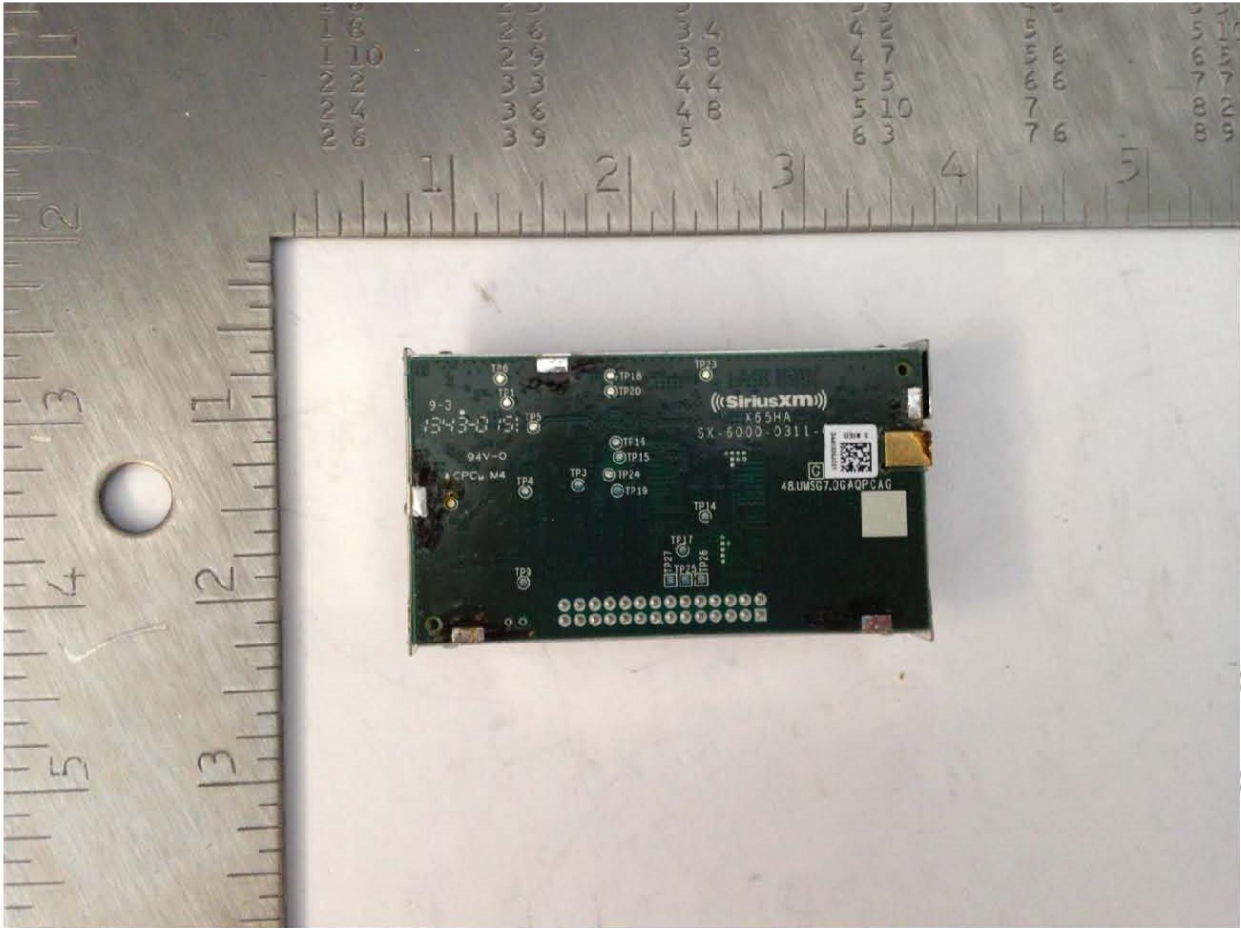
Main Board Assembly – Back View with SDARS Module Removed



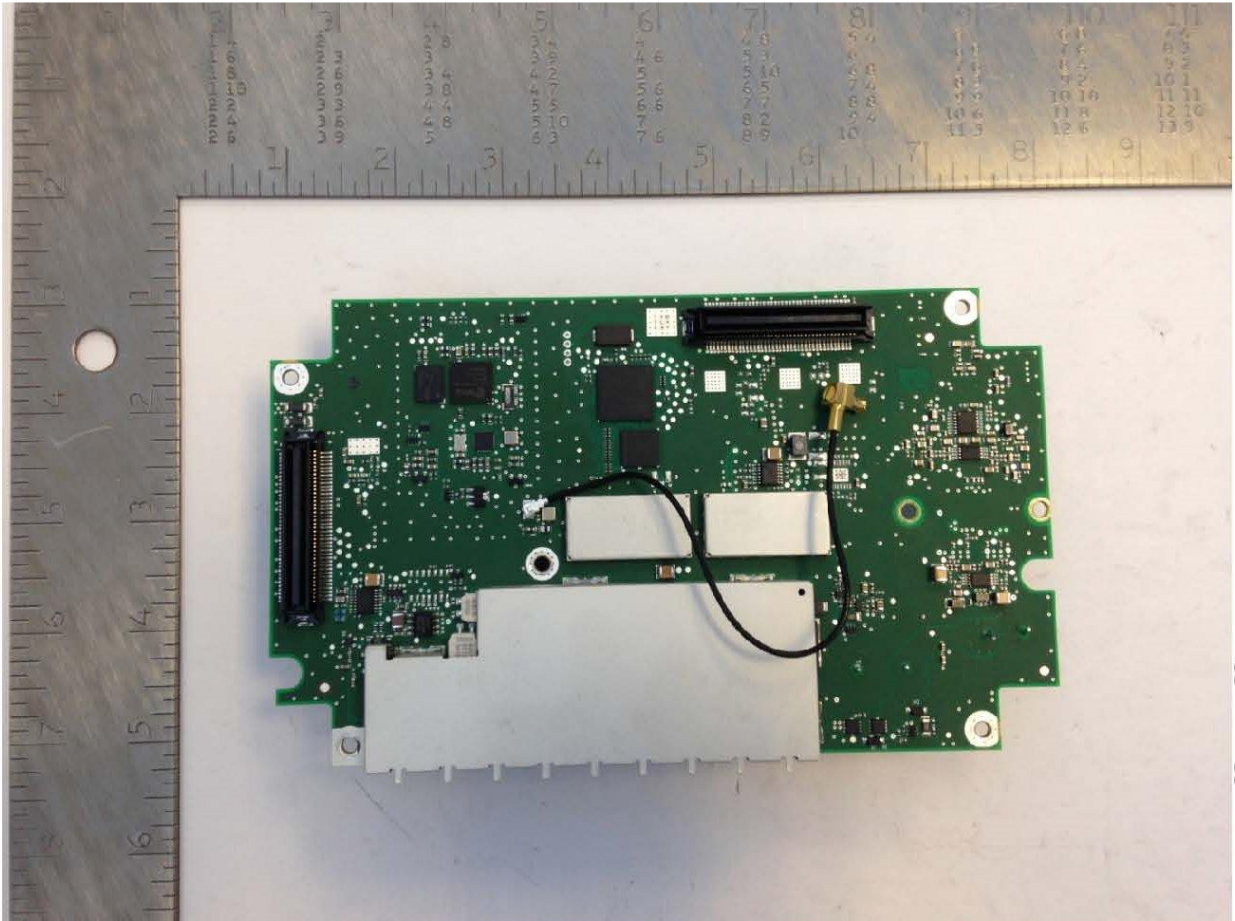
SDARS Module – Front View



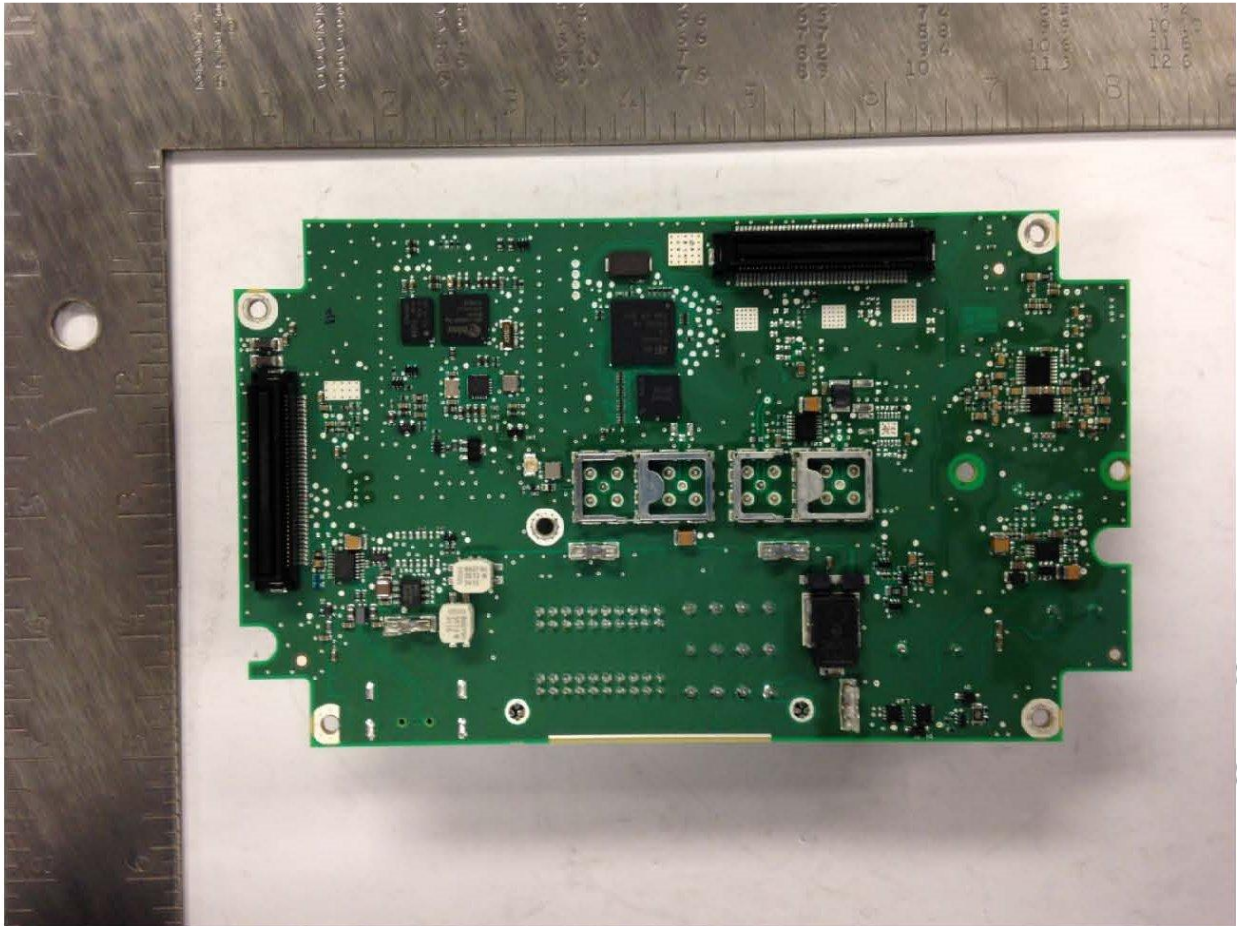
SDARS Module – Back View



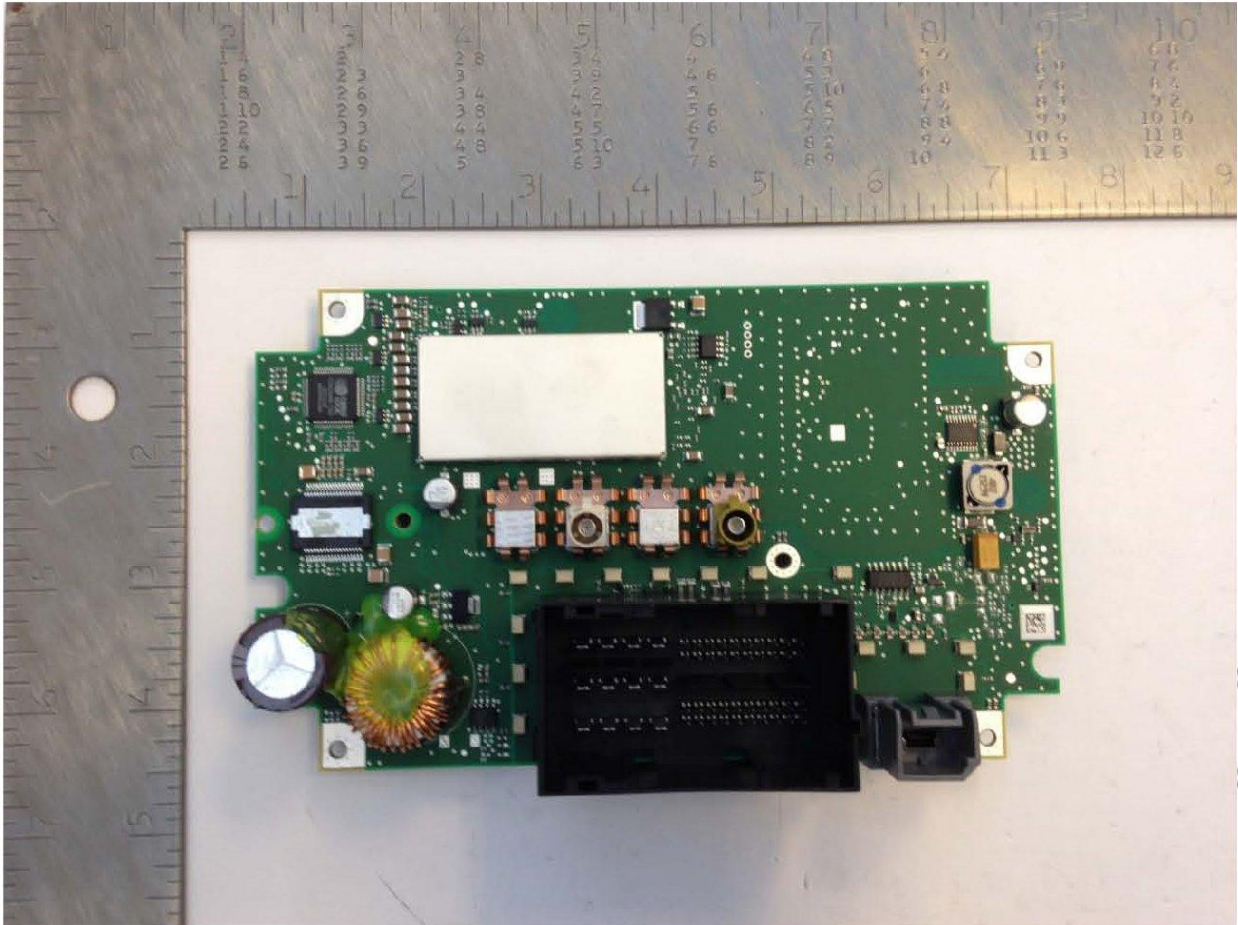
Back Board Assembly – Front View



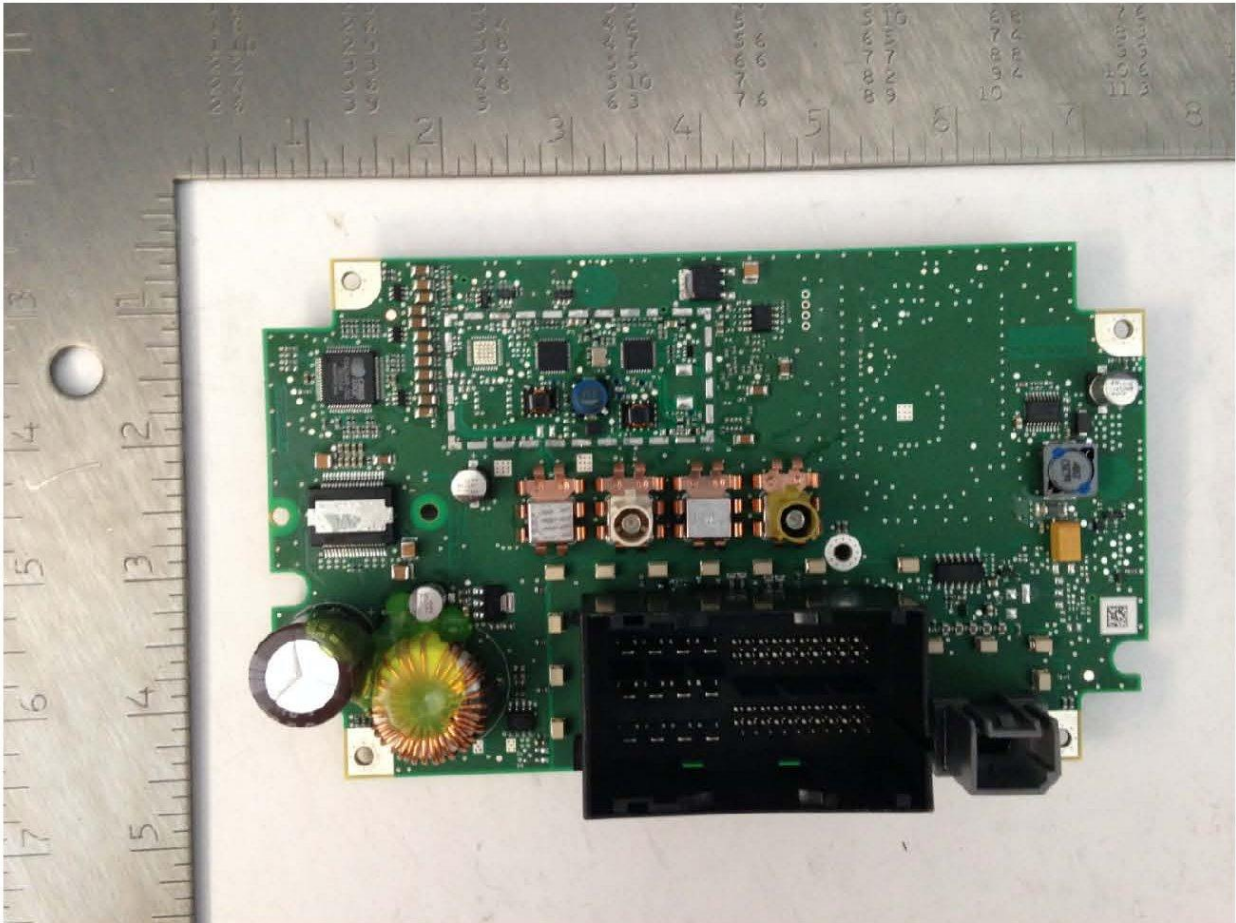
Back Board Assembly – Front View with EMC Shields Removed



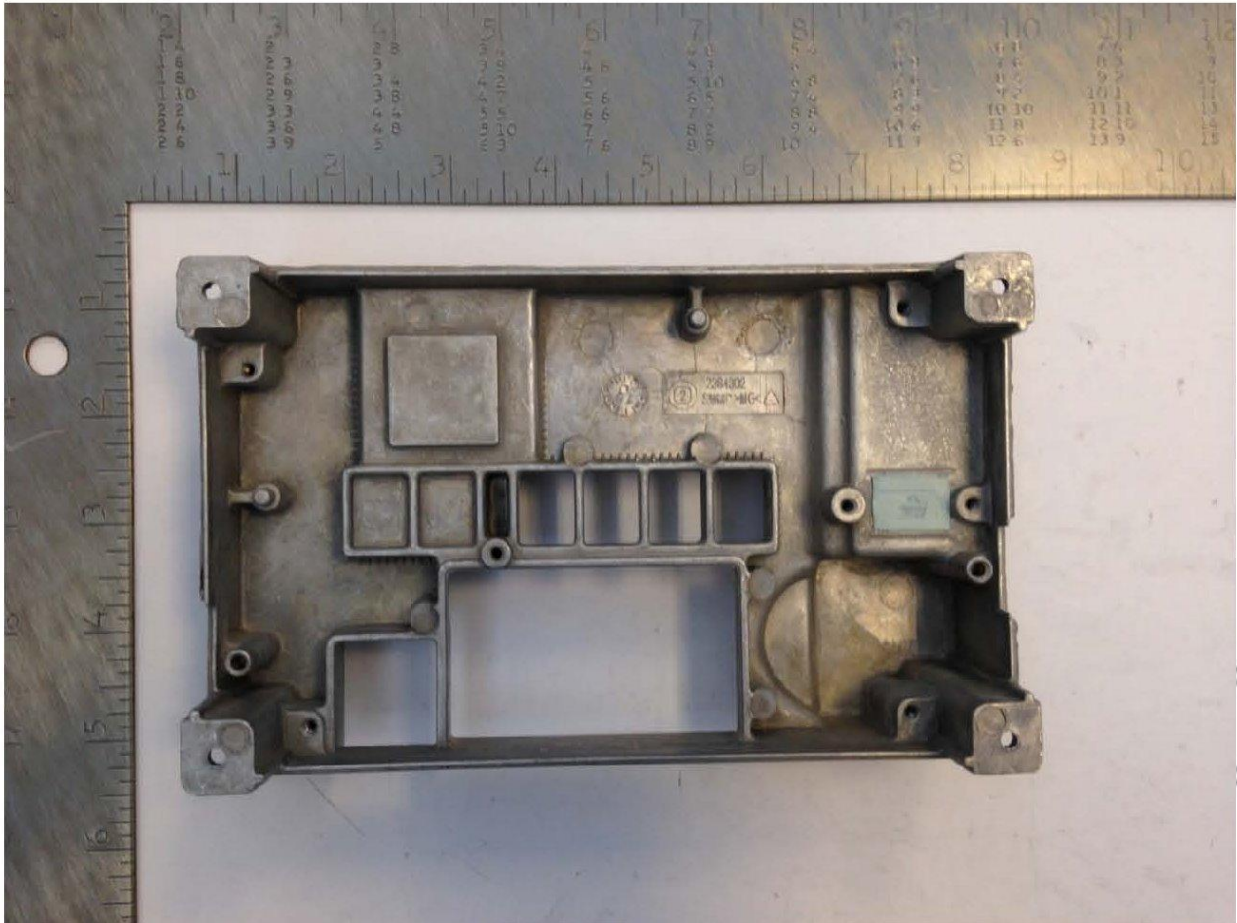
Back Board Assembly – Back View



Back Board Assembly – Back View with EMC Shield Removed



Rear Casting – Front View



Rear Casting – Back View

