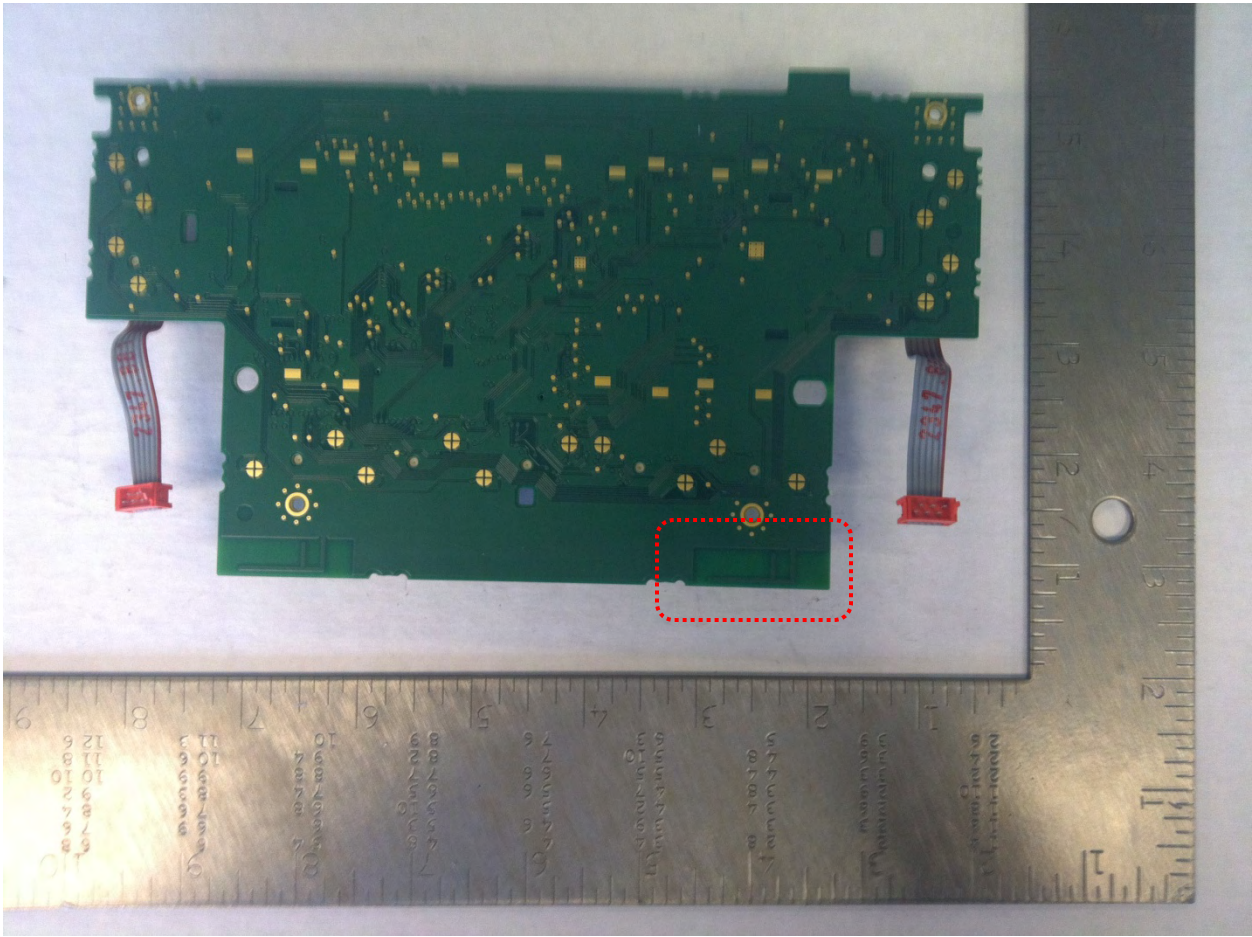
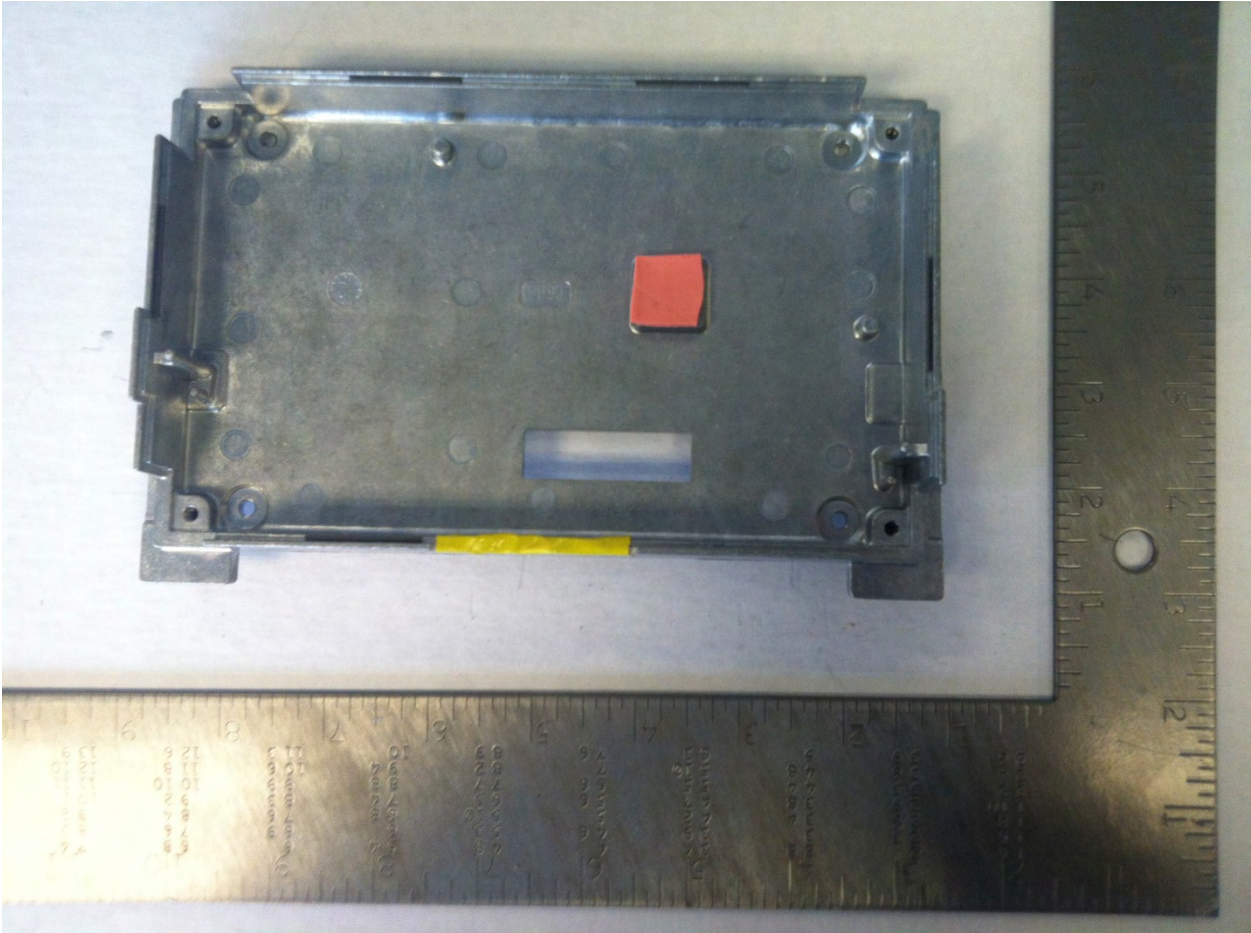


Front Panel Board Assembly - Back View

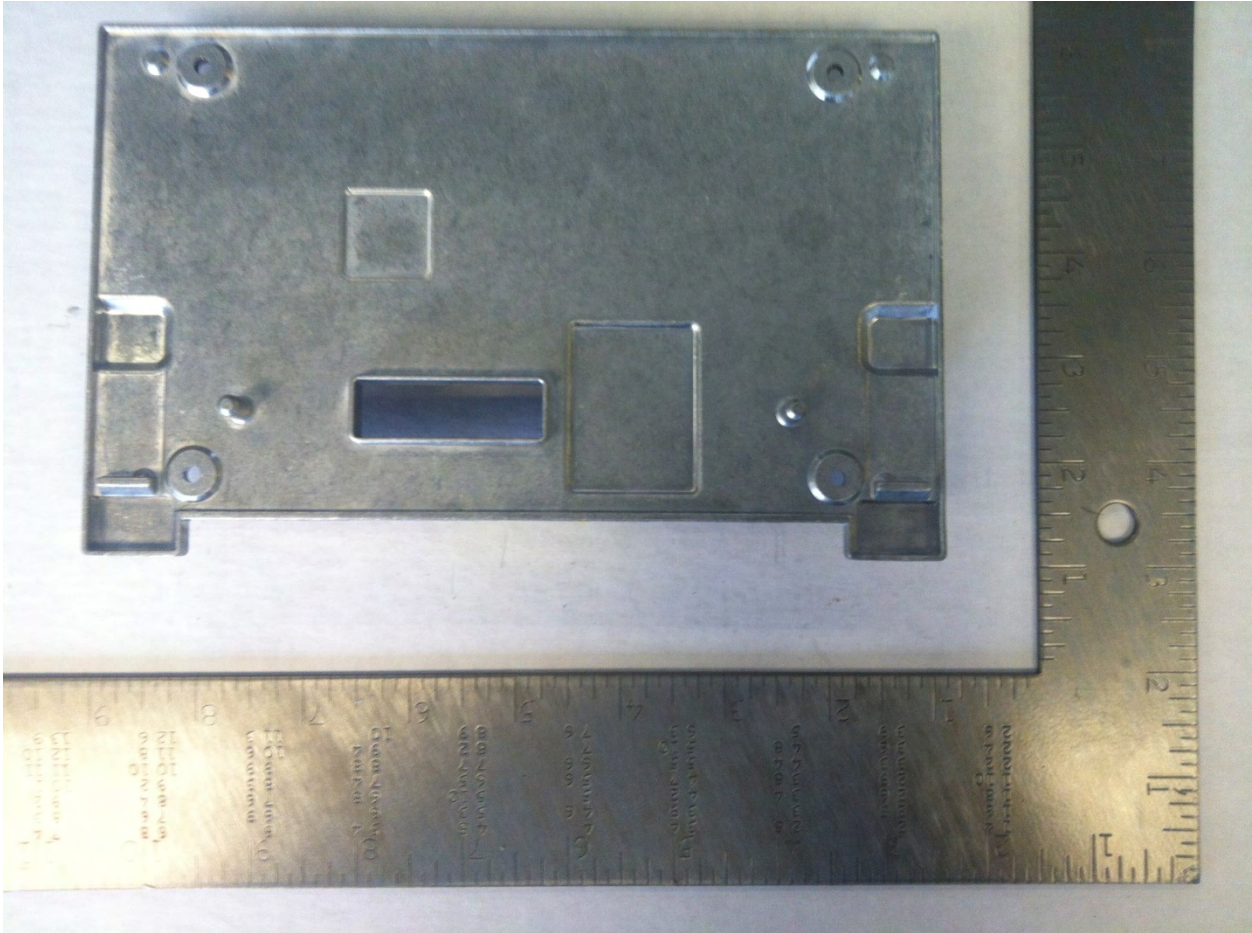


- Inverted-F PCB Antenna (Bluetooth) - Highlighted

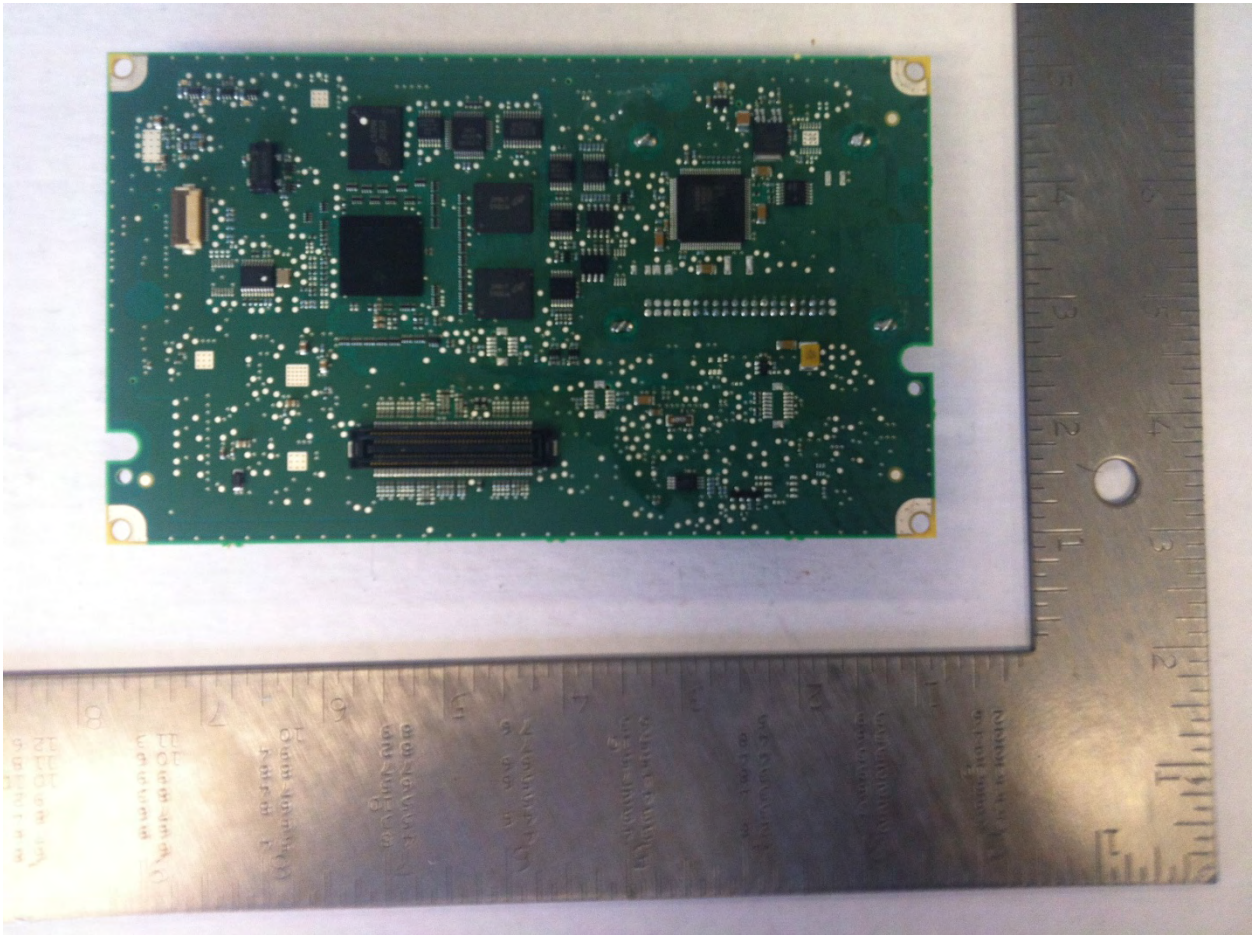
Front Casting - Front View



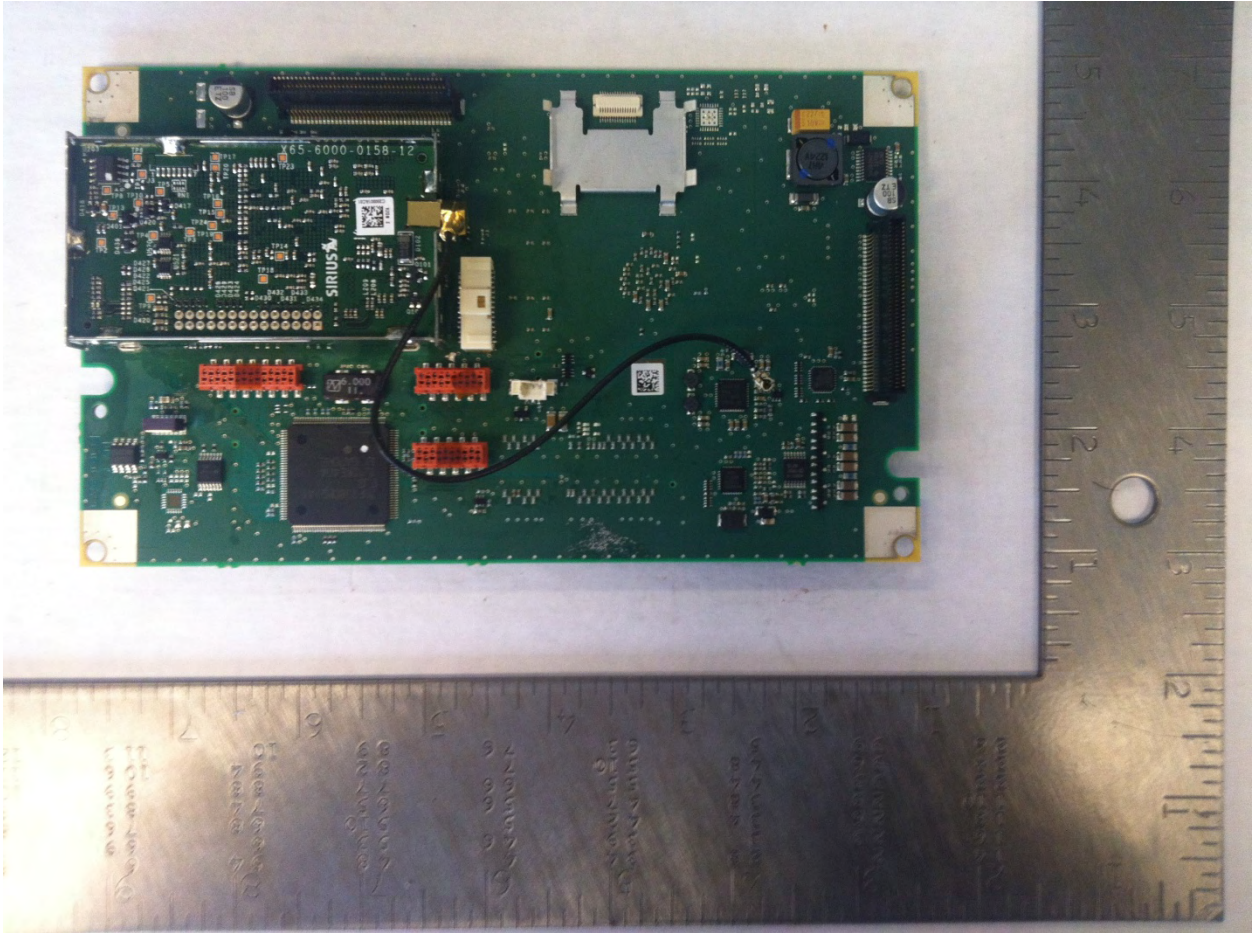
Front Casting - Back View



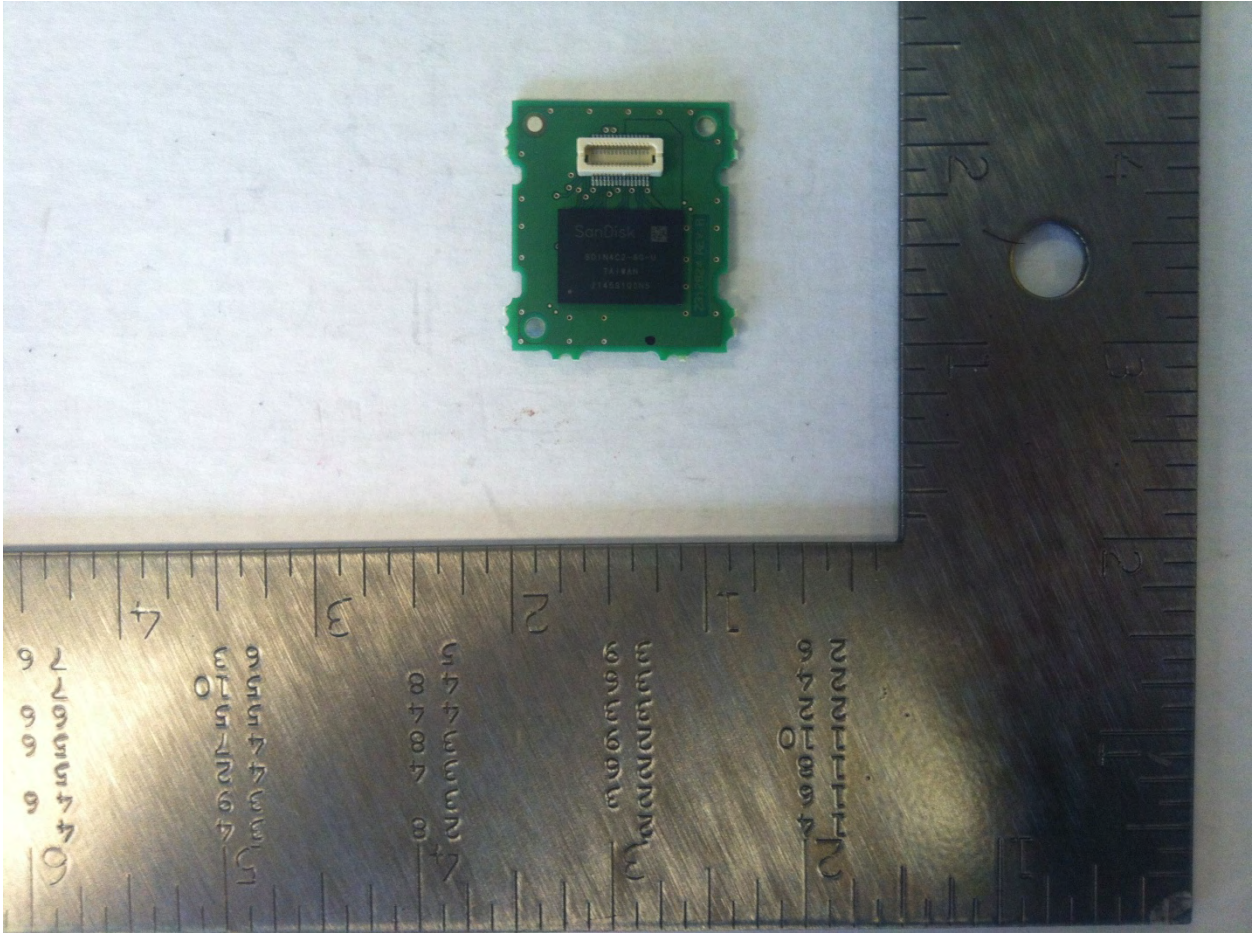
Main Board Assembly – Front View



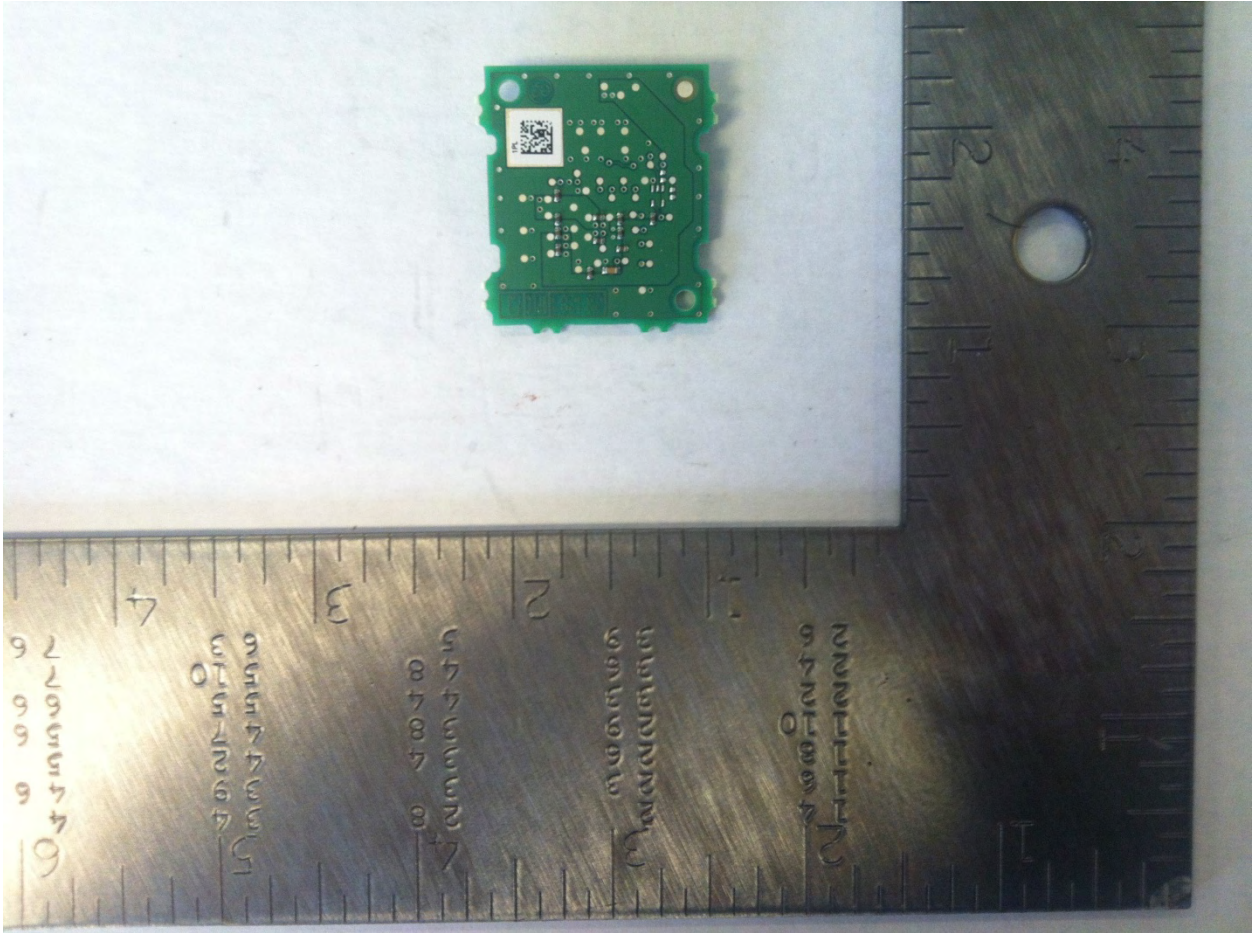
Main Board Assembly – Back View



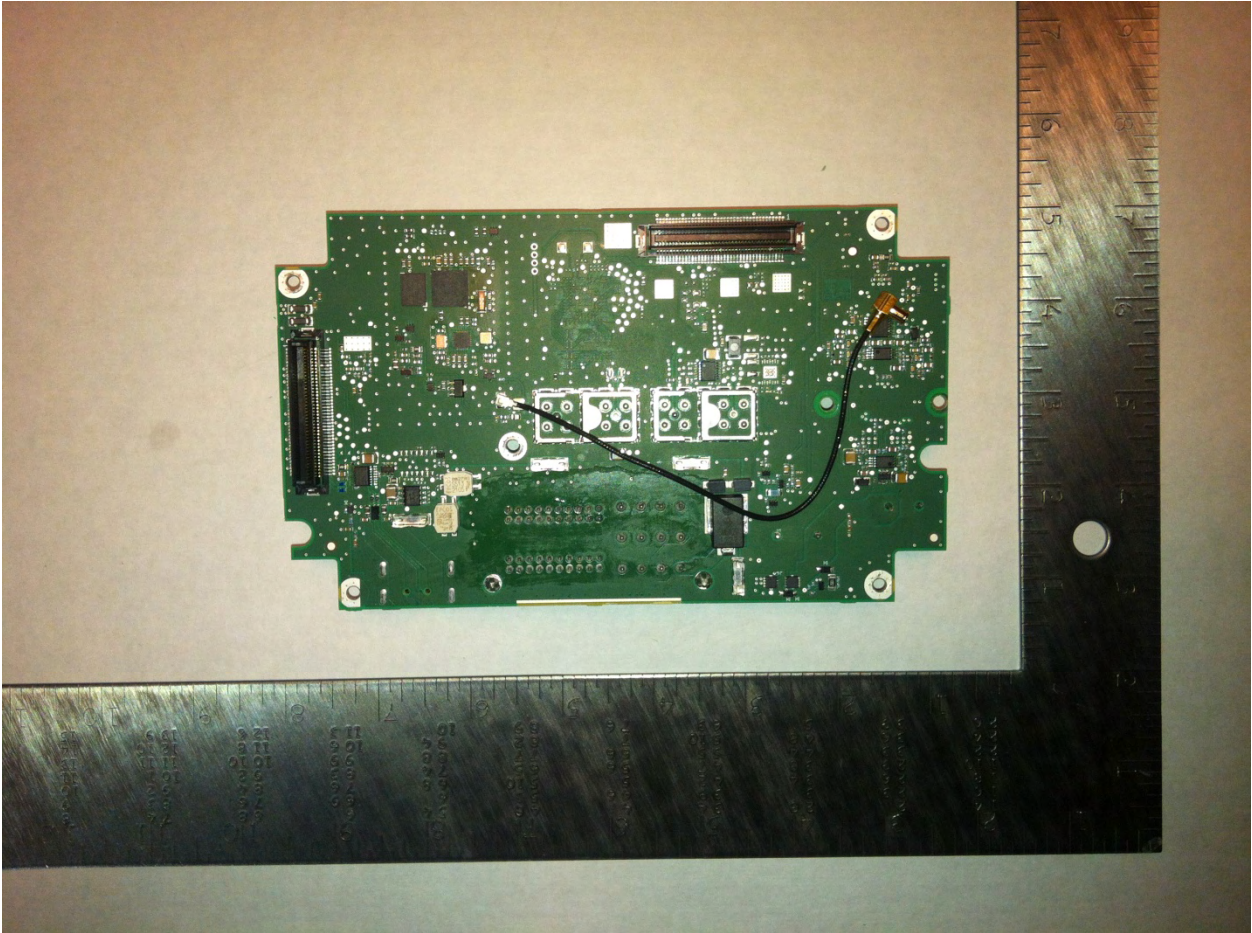
MNAND – Front View



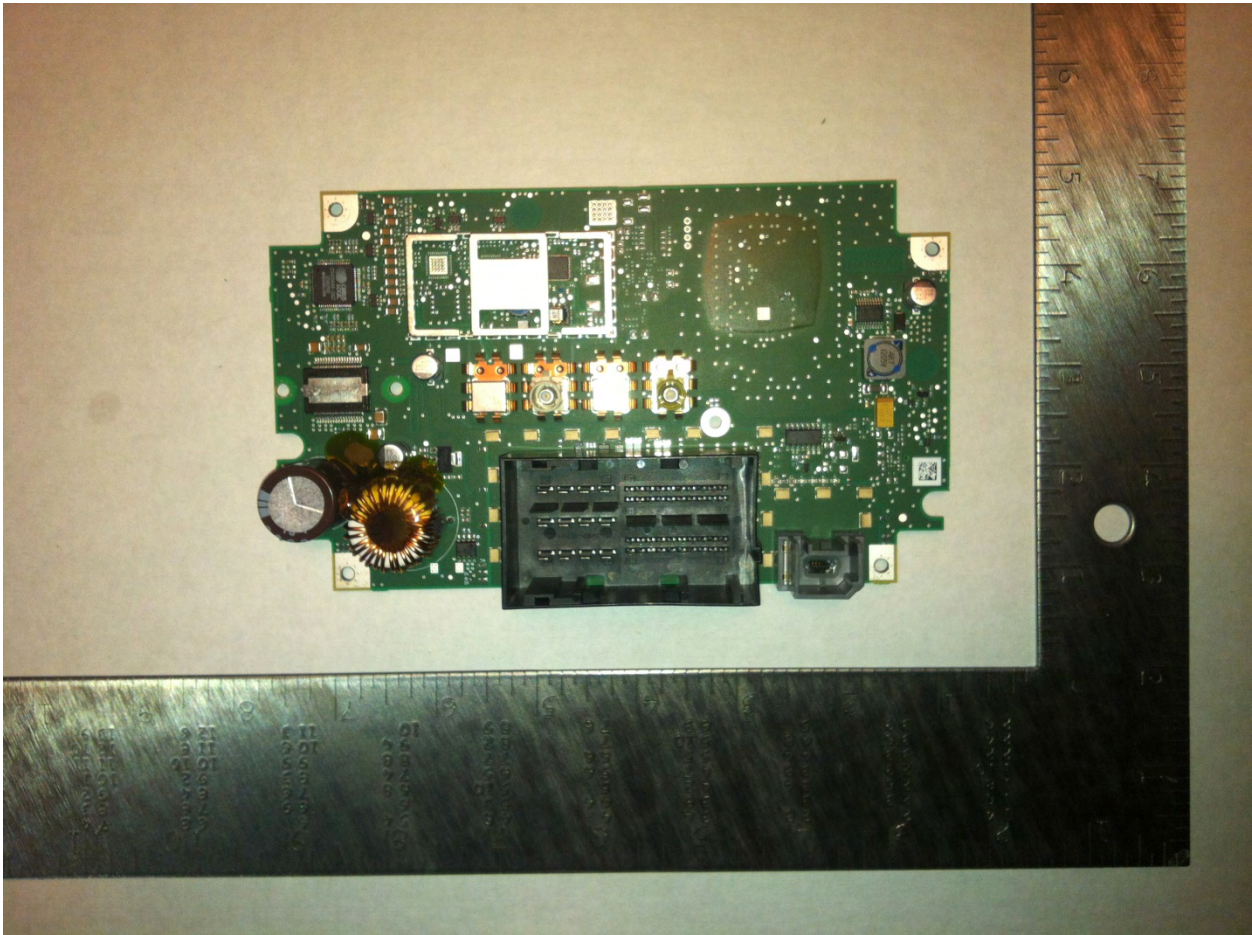
MNAND - Back View



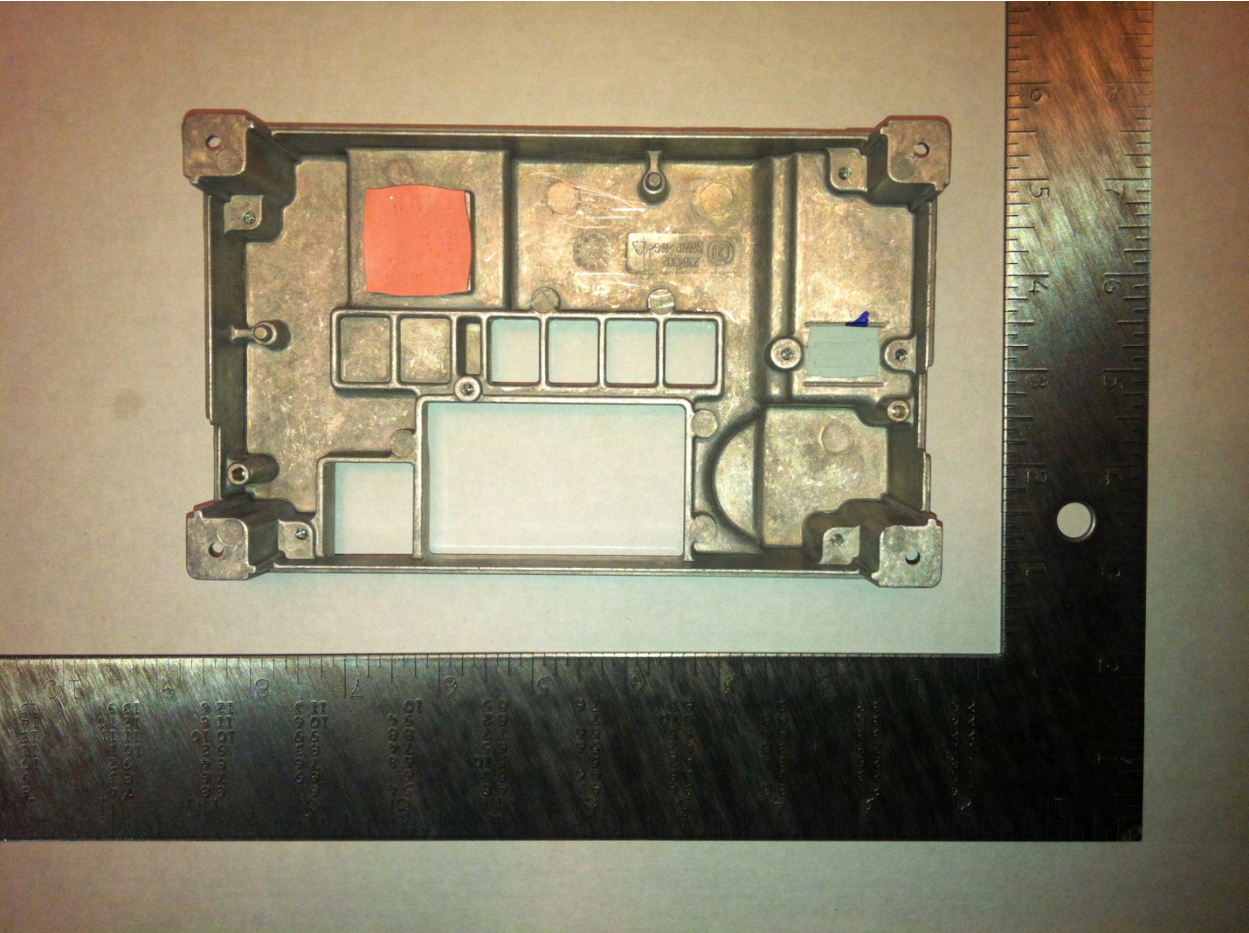
Back Board Assembly – Front View



Back Board Assembly – Back View



Rear Casting - Front View



Rear Casting – Back View

