

The logo consists of the word "HARMAN" in white, uppercase, sans-serif font, centered within a dark blue rectangular background.

HARMAN

Type: CMC

Model: VP3 330 NA

FCC ID: QNG-BE2803

IC: 6434C-BE2803

Internal Photos

01/10/2013

Harman Becker Automotive Systems

39001 West 12 Mile Road

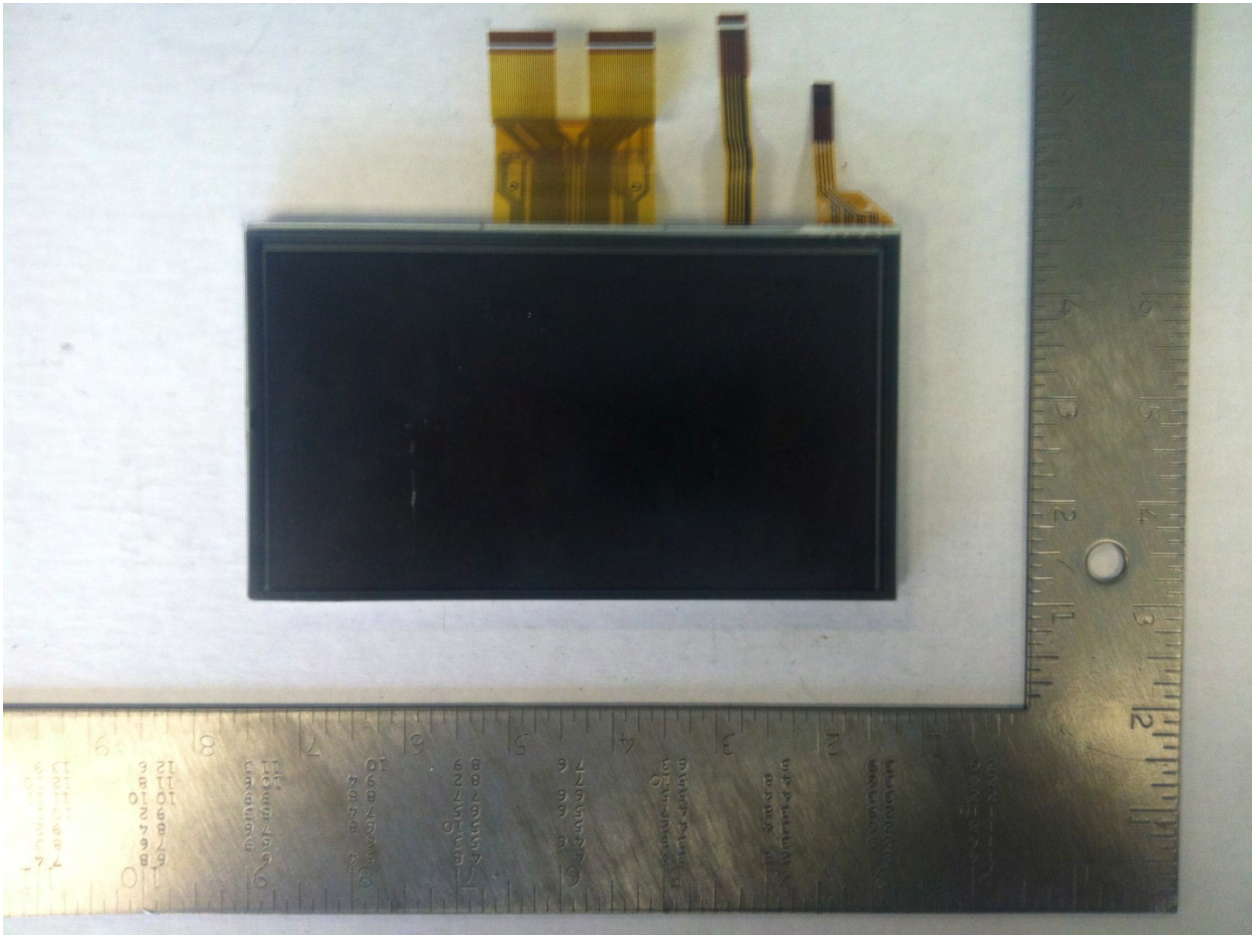
Farmington Hills, MI 48331

U.S.A.

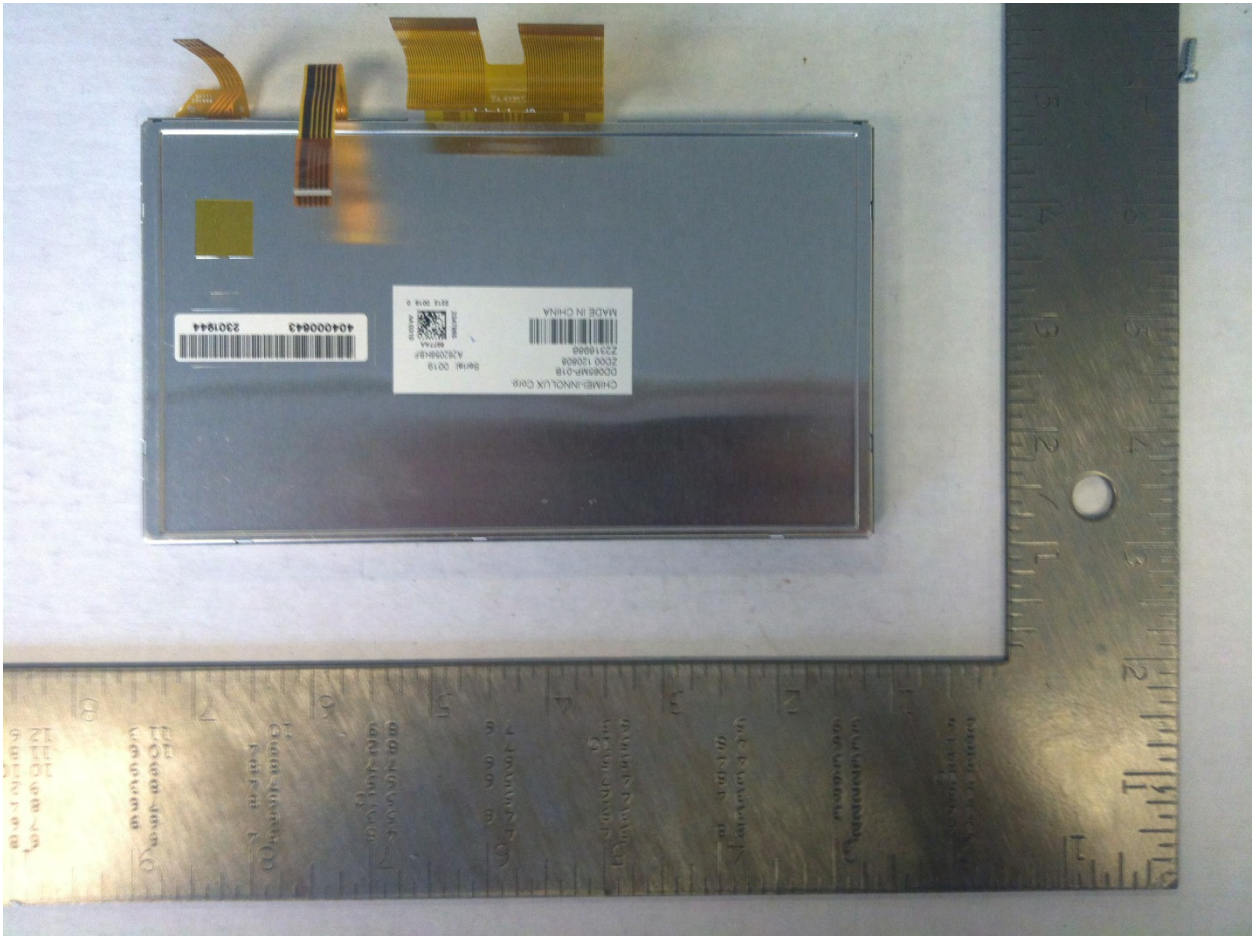
Table of Contents

Display - Front View	3
Display - Back View	4
Display Shield - Front View	5
Display Shield - Back View.....	6
Display Bezel – Front View.....	7
Display Bezel – Back View	8
Front Panel Board Assembly – Front View	9
Front Panel Board Assembly – Back View.....	10
Front Casting – Front View.....	12
Front Casting – Back View.....	13
Main Board Assembly – Front View.....	14
Main Board Assembly – Back View	15
MNAND – Front View.....	16
MNAND – Back View.....	17
Back Board Assembly – Front View.....	18
Back Board Assembly – Back View.....	19
Rear Casting – Front View	20
Rear Casting – Back View	21

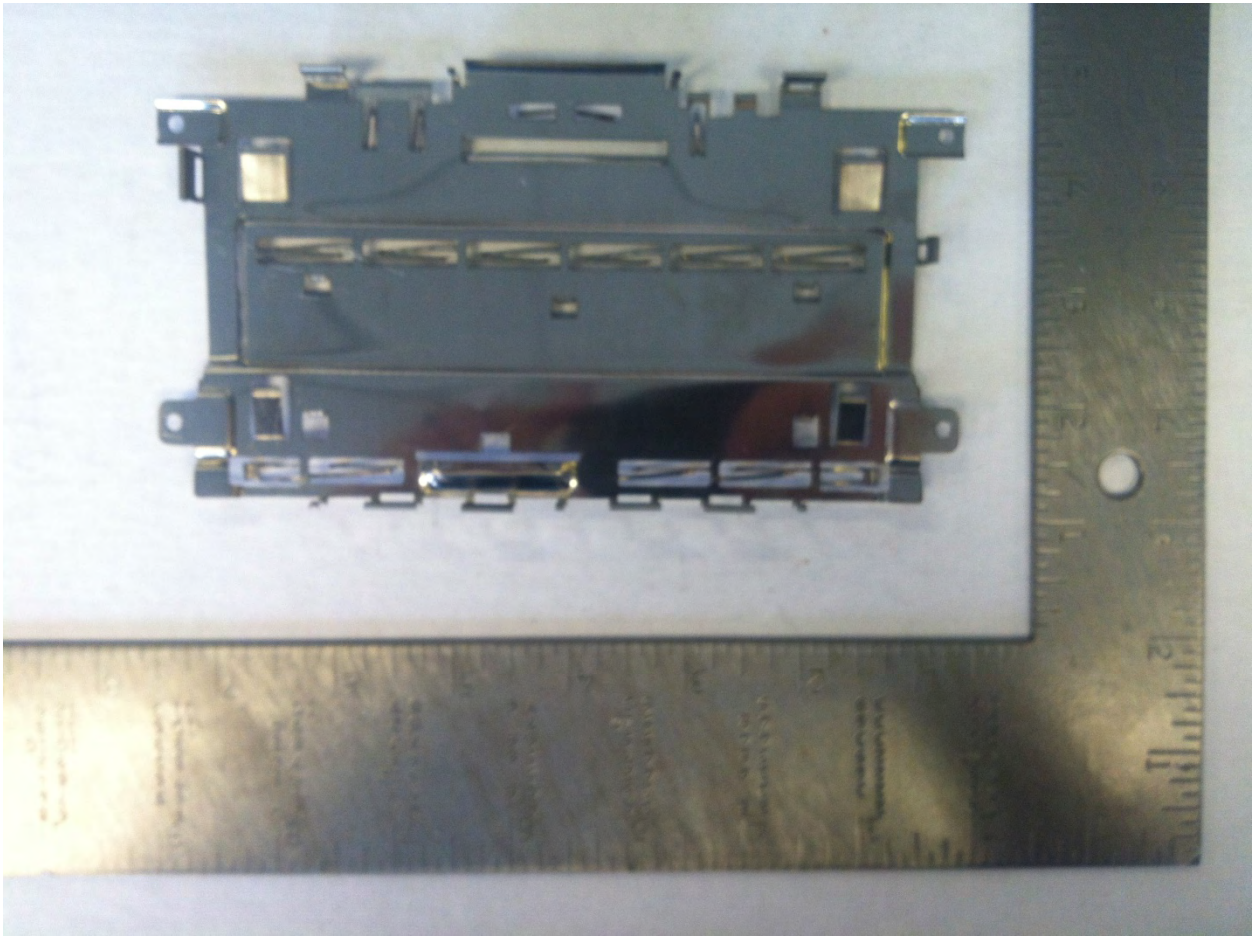
Display - Front View



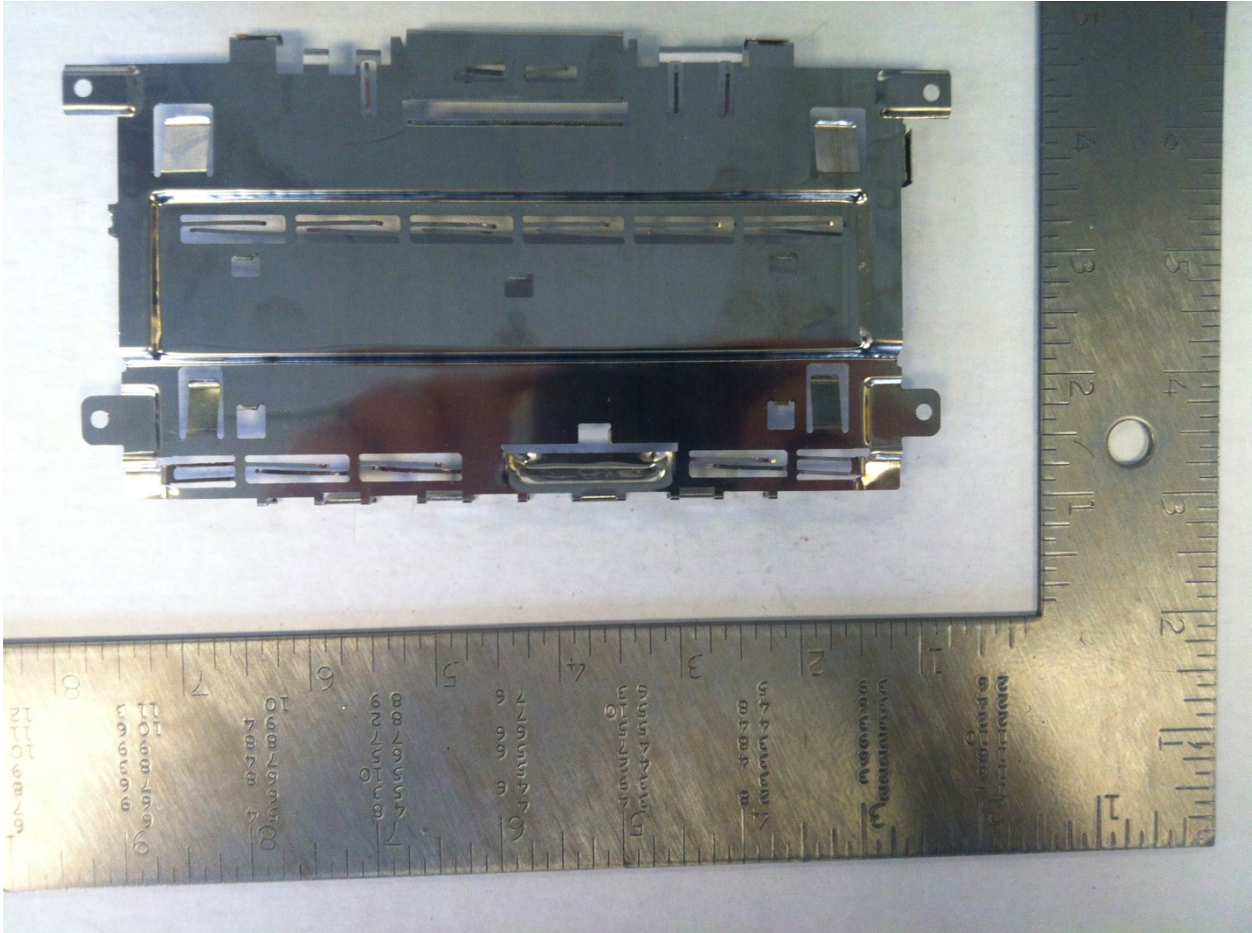
Display - Back View



Display Shield - Front View



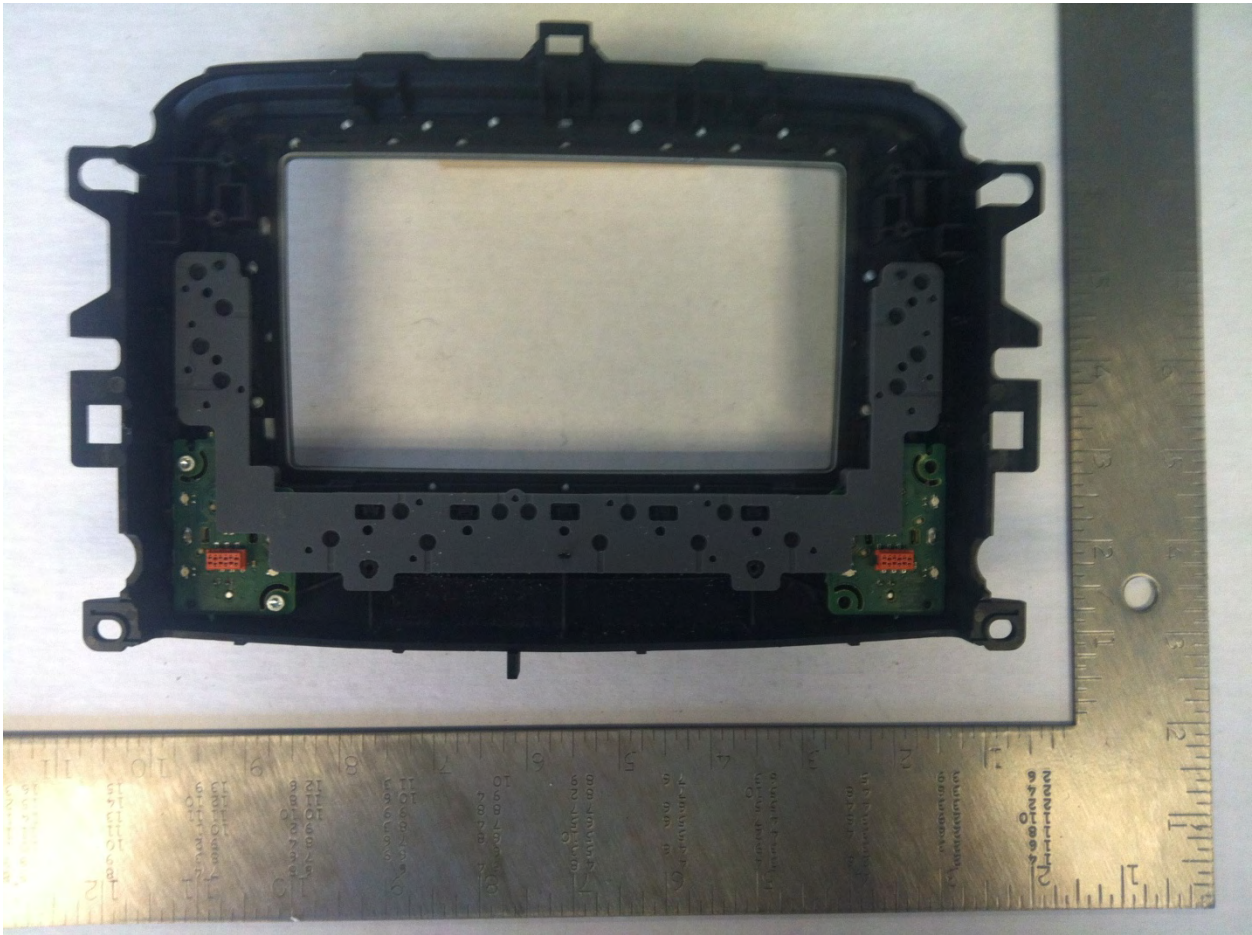
Display Shield - Back View



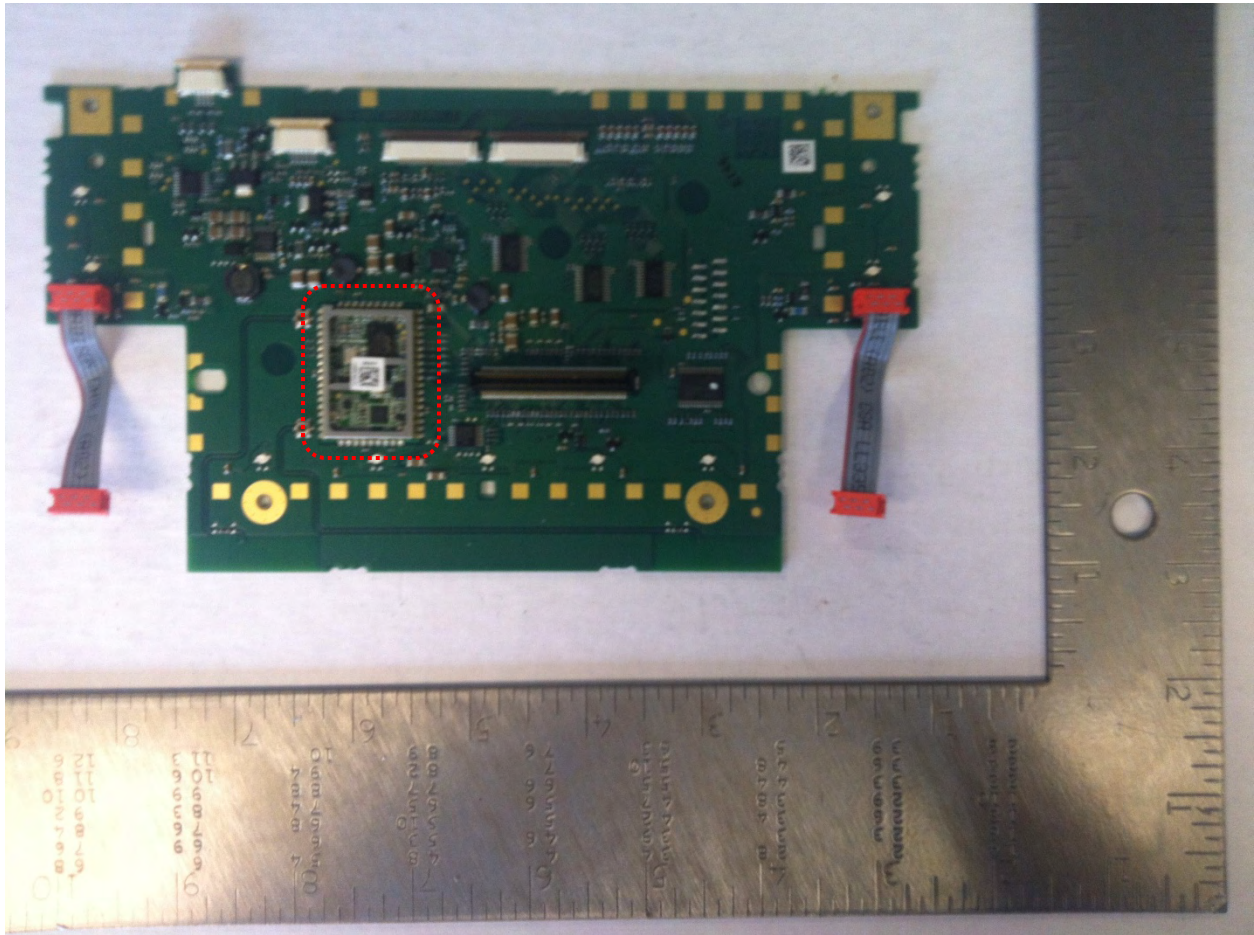
Display Bezel - Front View



Display Bezel - Back View



Front Panel Board Assembly – Front View



- Integrated Circuit (Bluetooth) - Highlighted