

The HARMAN logo is displayed in white, uppercase, sans-serif font within a dark blue rectangular background.

**HARMAN**

**FCC ID: QNG-BE2802**

**IC: 6434C-BE2802**

**Model: VP2H NA**

**Internal Photos**

**01/07/2013**

**Harman Becker Automotive Systems**

**39001 West 12 Mile Road**

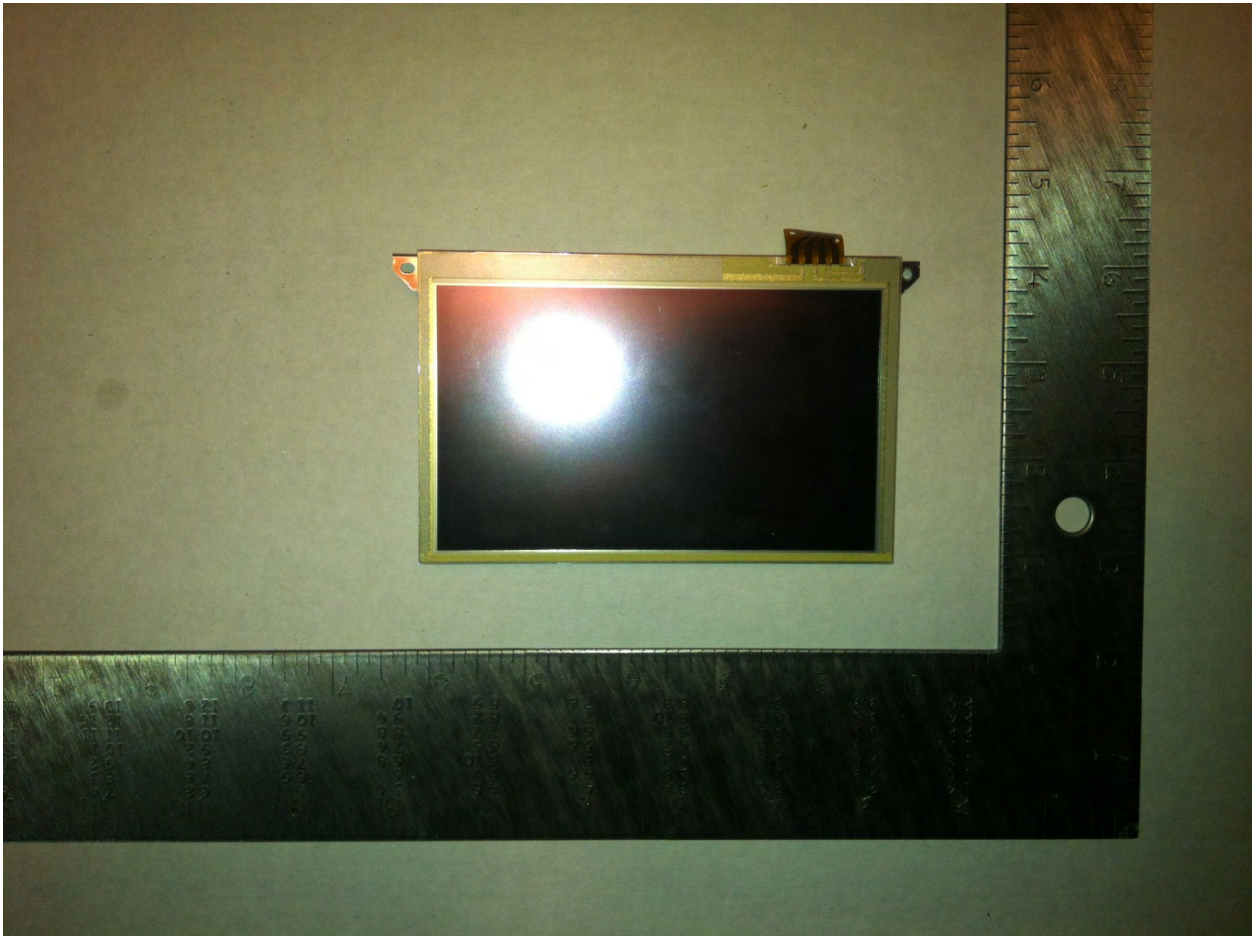
**Farmington Hills, MI 48331**

**U.S.A.**

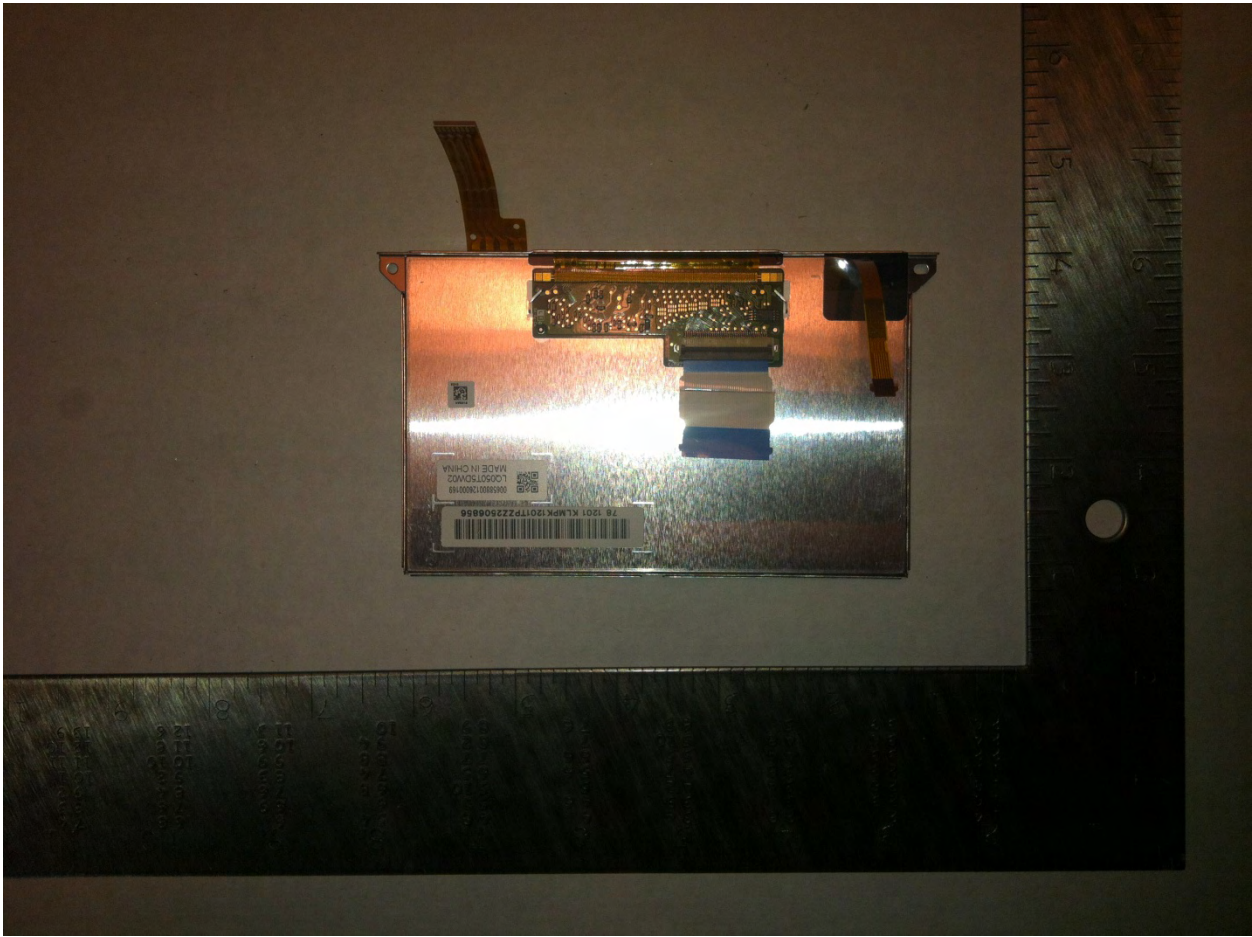
## Table of Contents

Display - Front View .....	3
Display - Back View .....	4
Display Bezel – Front View .....	5
Display Bezel – Back View .....	6
Front Panel Board Assembly – Front View .....	7
Front Panel Board Assembly – Back View .....	8
Front Casting – Front View.....	10
Front Casting – Back View.....	11
Main Board Assembly – Front View.....	12
Main Board Assembly – Back View .....	13
Back Board Assembly – Front View.....	14
Back Board Assembly – Back View.....	15
Rear Casting – Front View .....	16
Rear Casting – Back View .....	17

Display - Front View



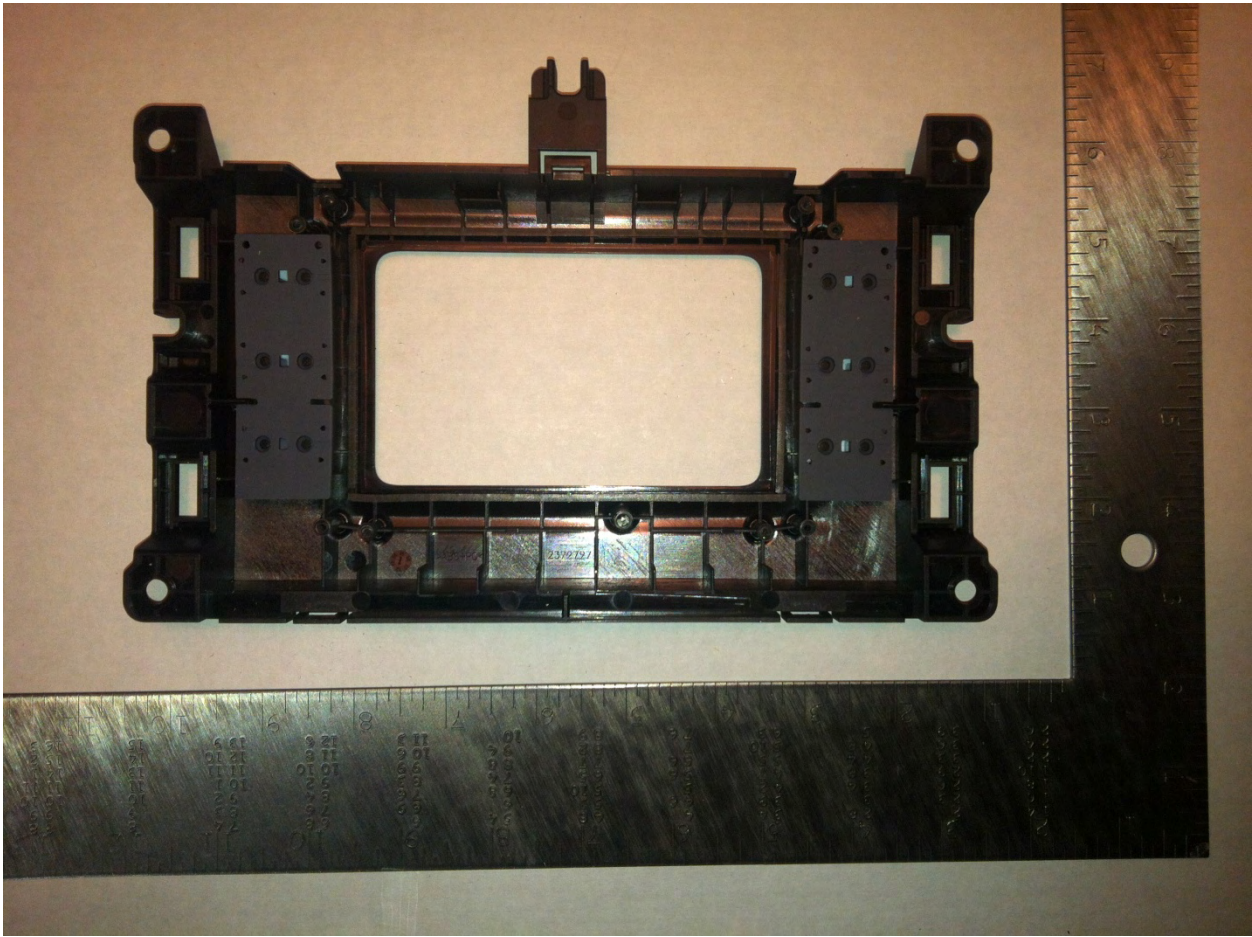
Display - Back View



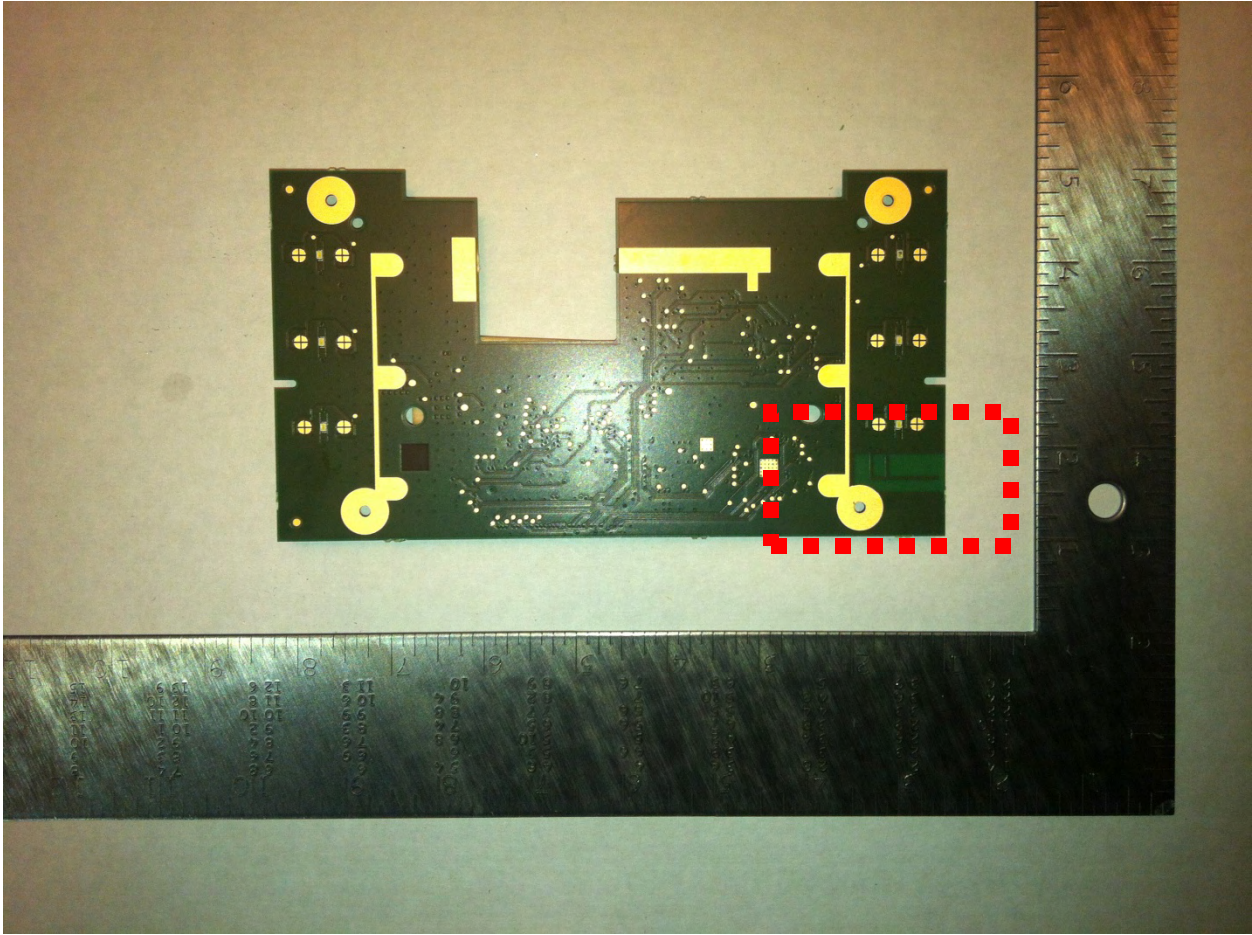
Display Bezel - Front View



Display Bezel - Back View

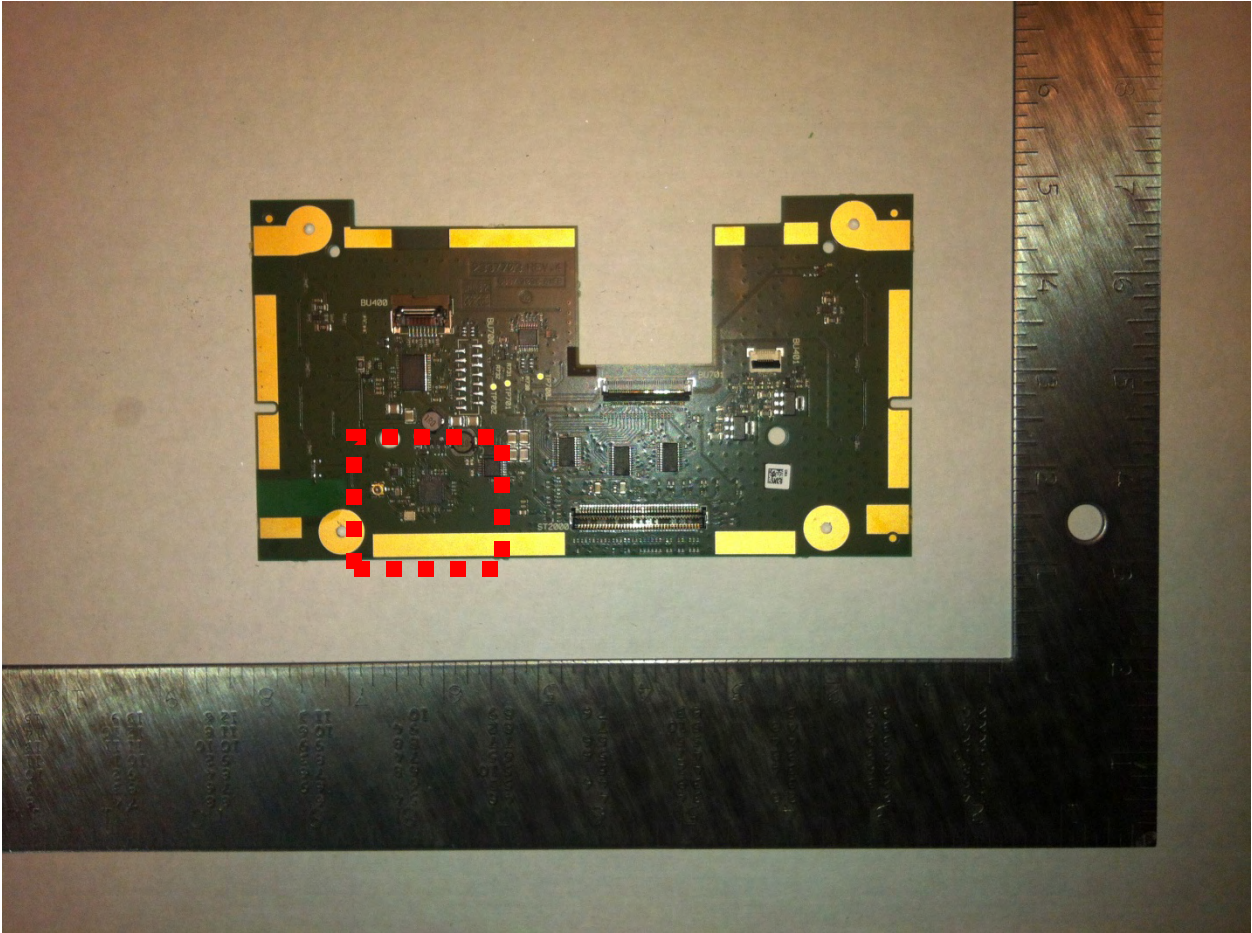


# Front Panel Board Assembly - Front View



- Inverted-F PCB Antenna (Bluetooth) - Highlighted

# Front Panel Board Assembly - Back View



- Bluetooth Integrated Circuit - Highlighted