

The HARMAN logo consists of the word "HARMAN" in a bold, white, sans-serif font, centered within a dark blue rectangular background.

**HARMAN**

**FCC ID: QNG-BE2801**

**Type: CMC**

**Model: VP4 NA**

**Internal Photos**

**08/15/2012**

**Harman Becker Automotive Systems**

**39001 West 12 Mile Road**

**Farmington Hills, MI 48331**

**U.S.A.**

## Table of Contents

Display - Front View .....	3
Display - Back View .....	4
Display Bezel – Front View .....	5
Display Bezel – Back View .....	6
Display Shield – Front View.....	7
Display Shield – Back View.....	8
Front Panel Board Assembly – Front View .....	9
Front Panel Board Assembly – Back View.....	10
Front Casting – Front View.....	11
Front Casting – Back View.....	12
Main Board Assembly – Front View .....	13
Main Board Assembly – Back View .....	14
Flash NAND Assembly – Front View.....	15
Flash NAND Assembly – Rear View.....	16
Back Board Assembly – Front View.....	17
Back Board Assembly – Back View.....	18
Rear Casting – Front View .....	19
Rear Casting – Back View .....	20

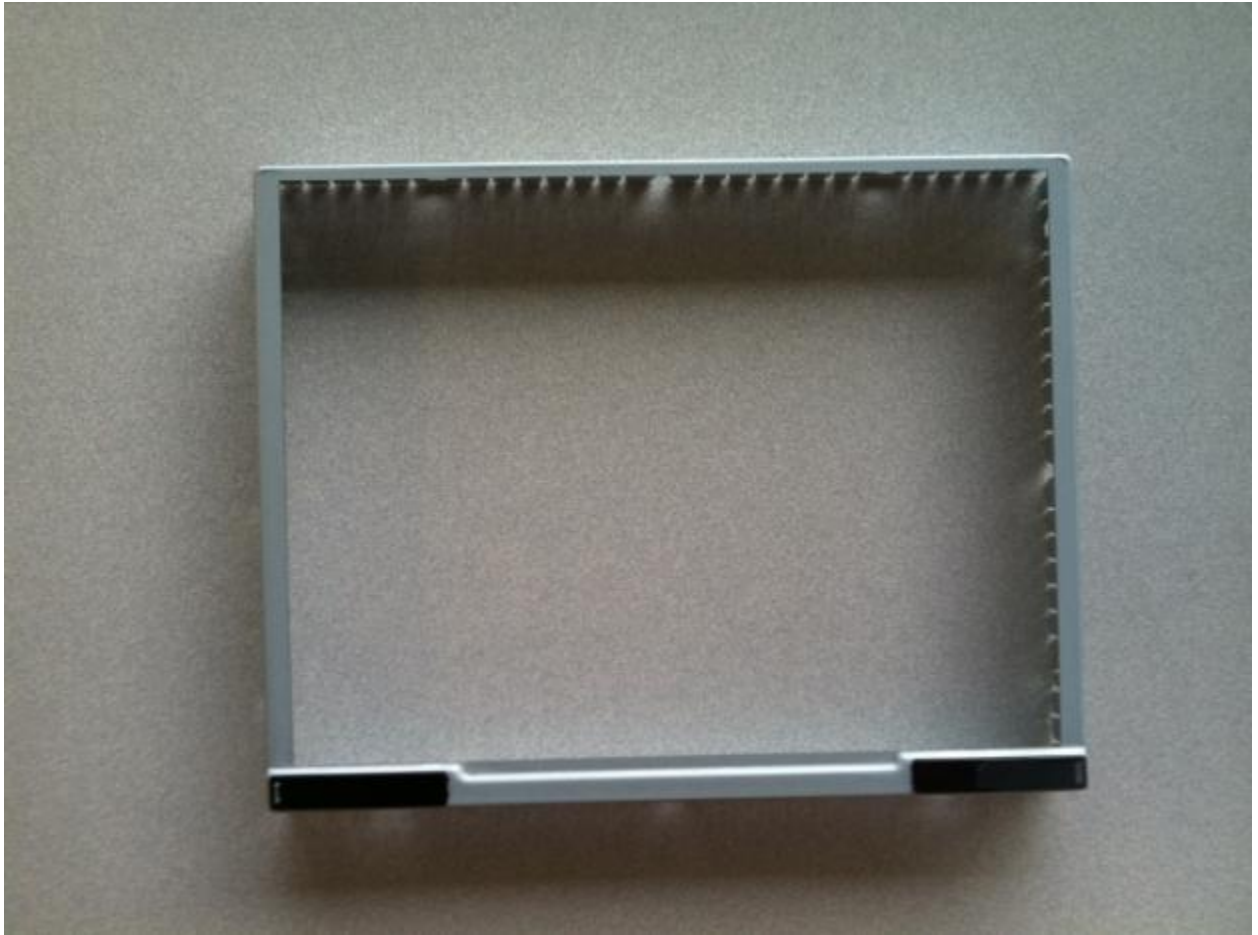
## Display - Front View



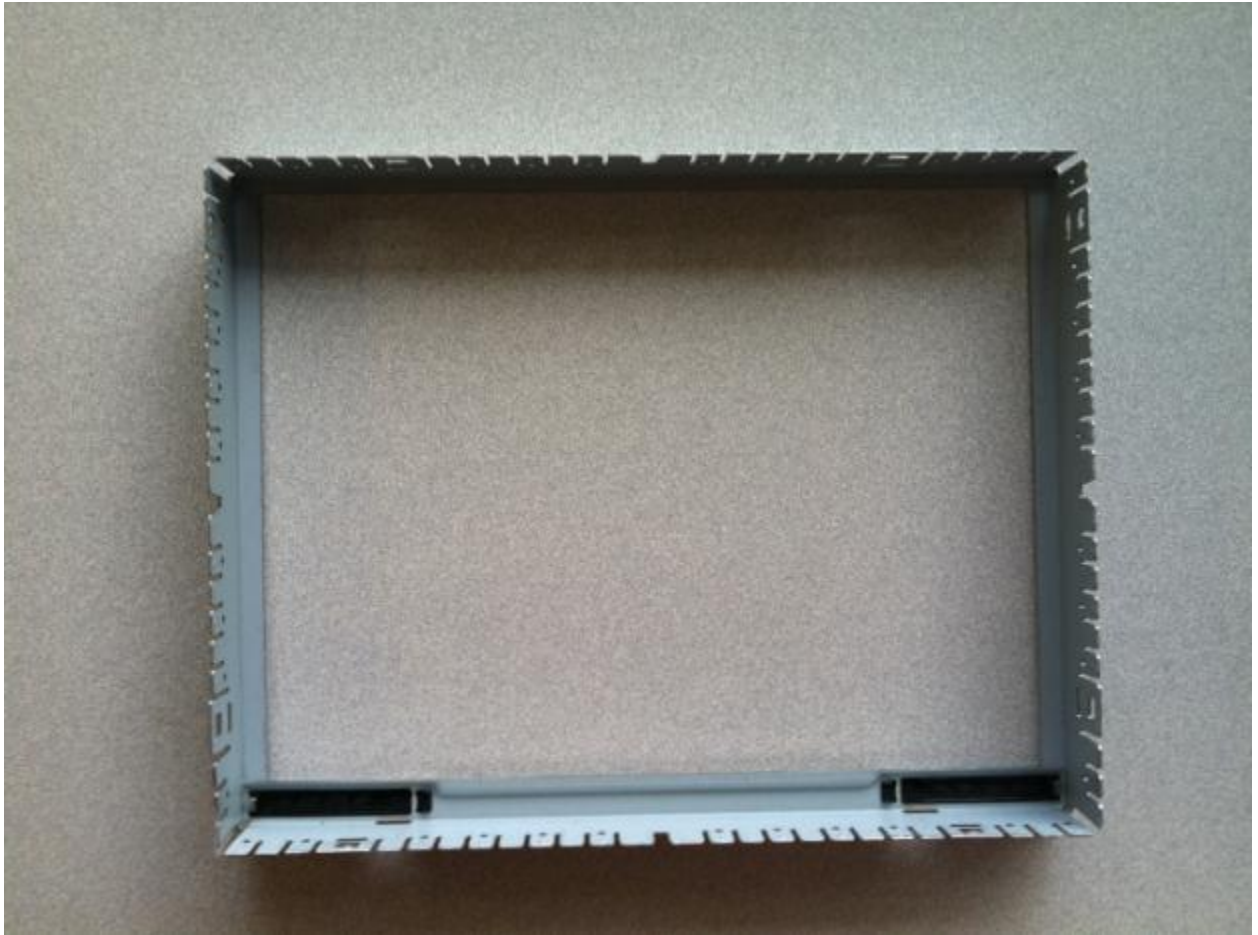
## Display - Back View



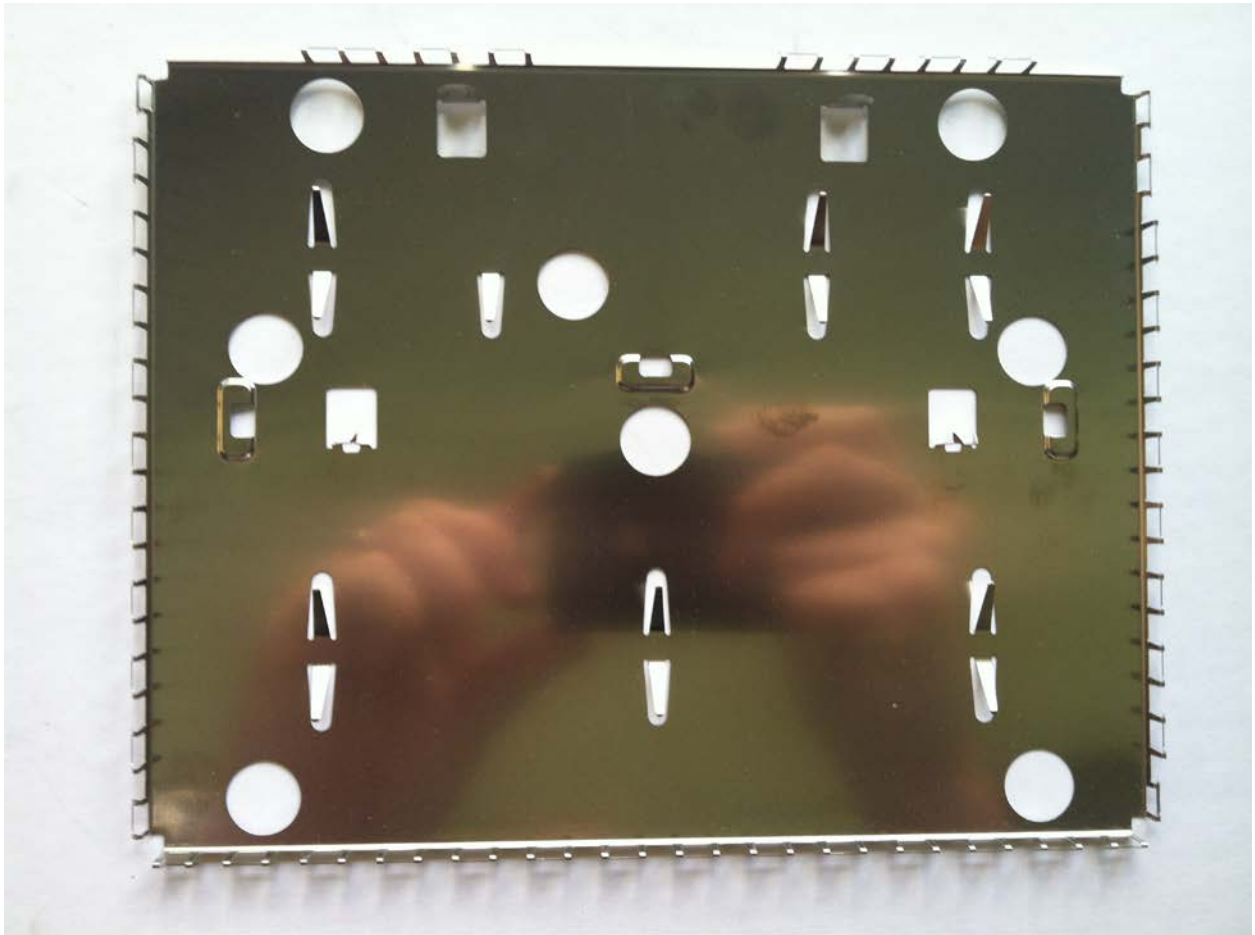
## Display Bezel - Front View



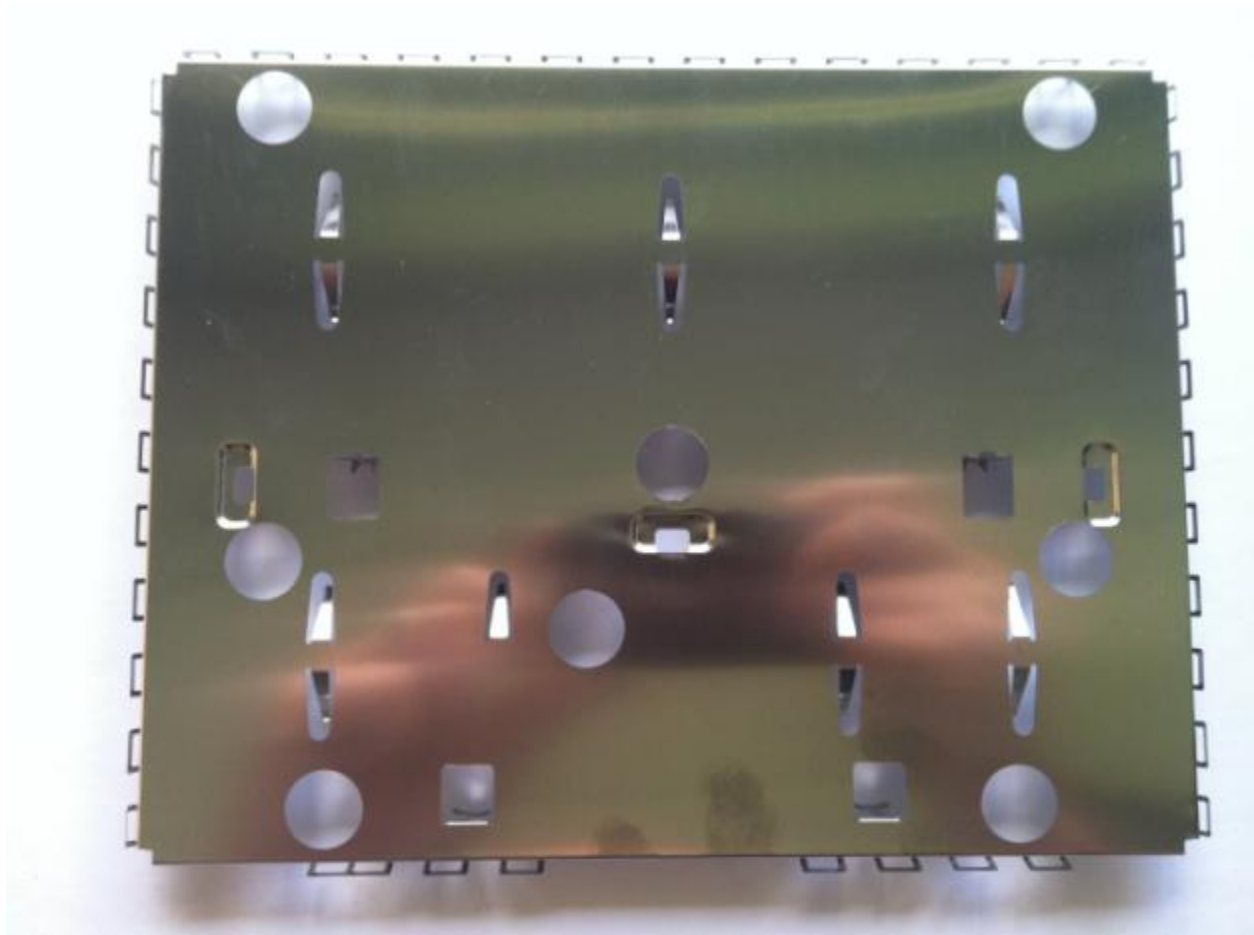
## Display Bezel - Back View



## Display Shield – Front View

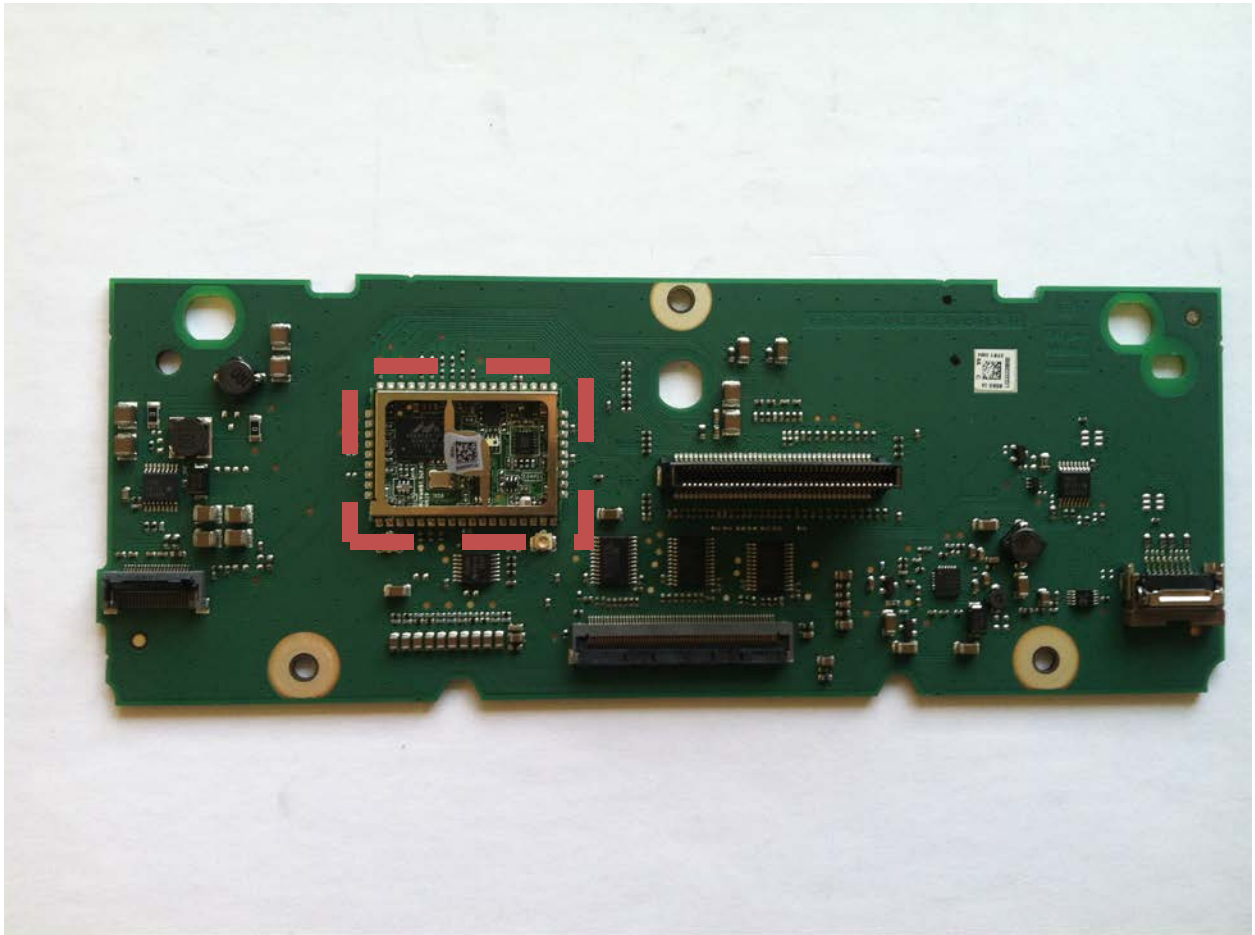


## Display Shield – Back View



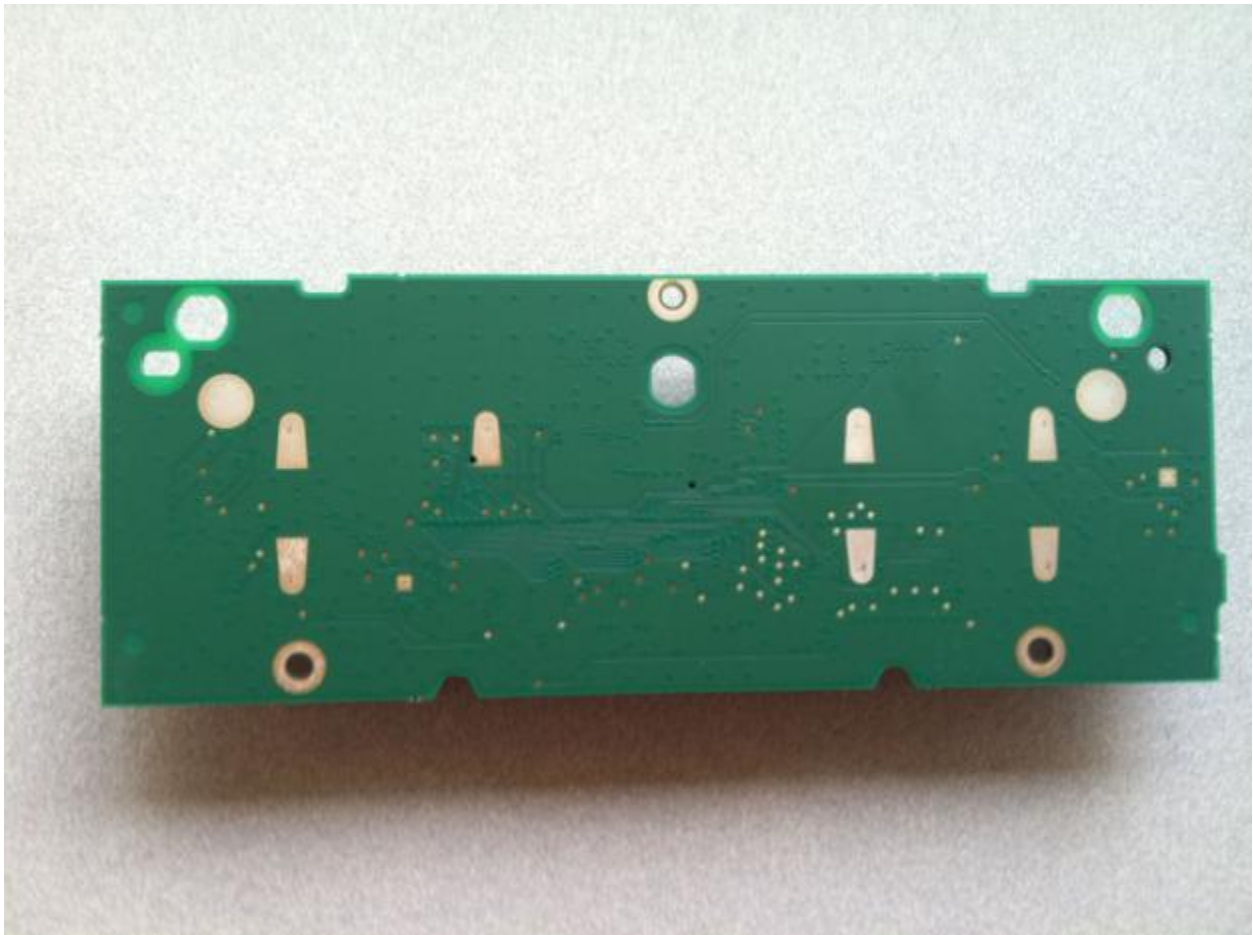


## Front Panel Board Assembly – Front View

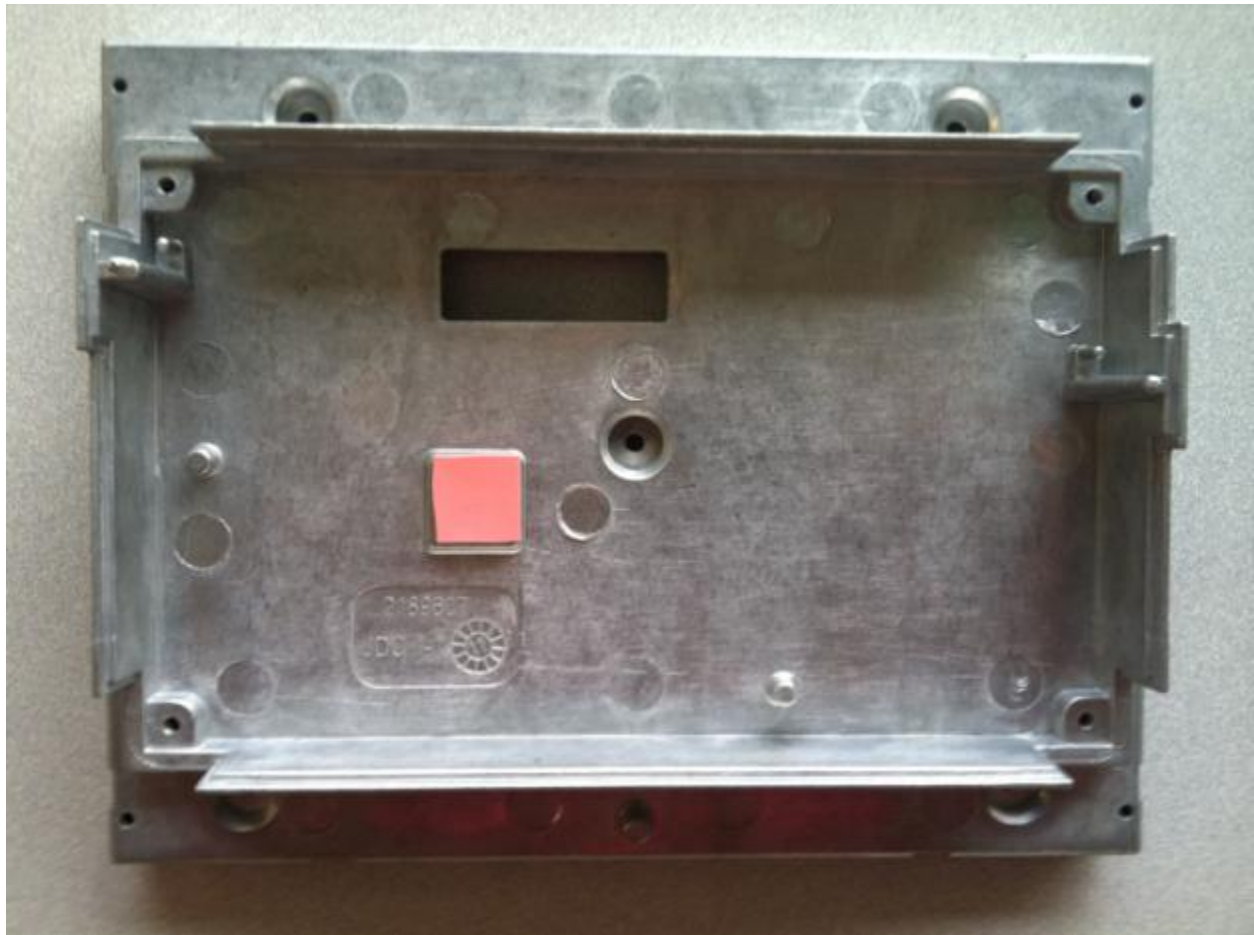


Bluetooth/WLAN Module (highlighted)

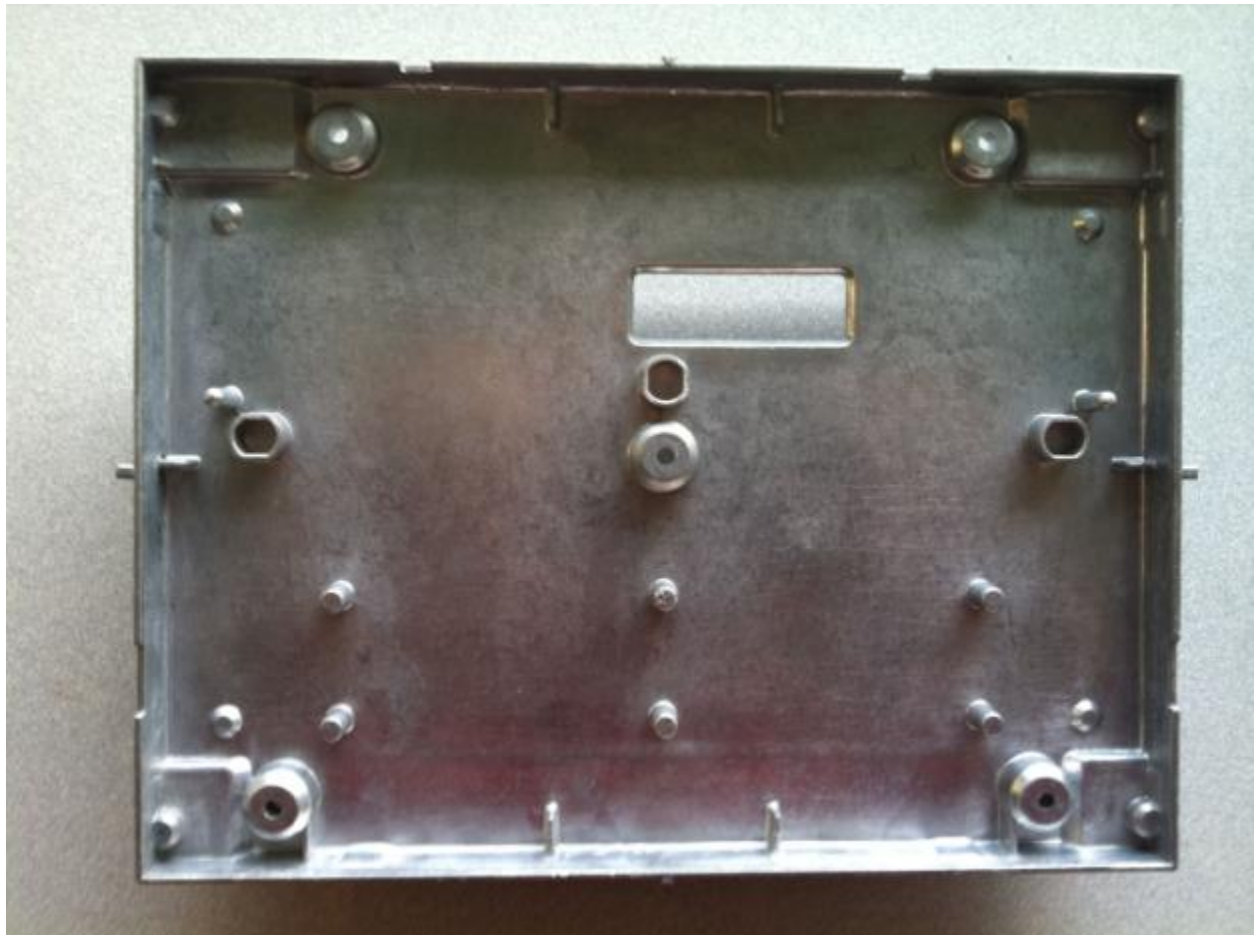
## Front Panel Board Assembly – Back View



## Front Casting – Front View



## Front Casting – Back View

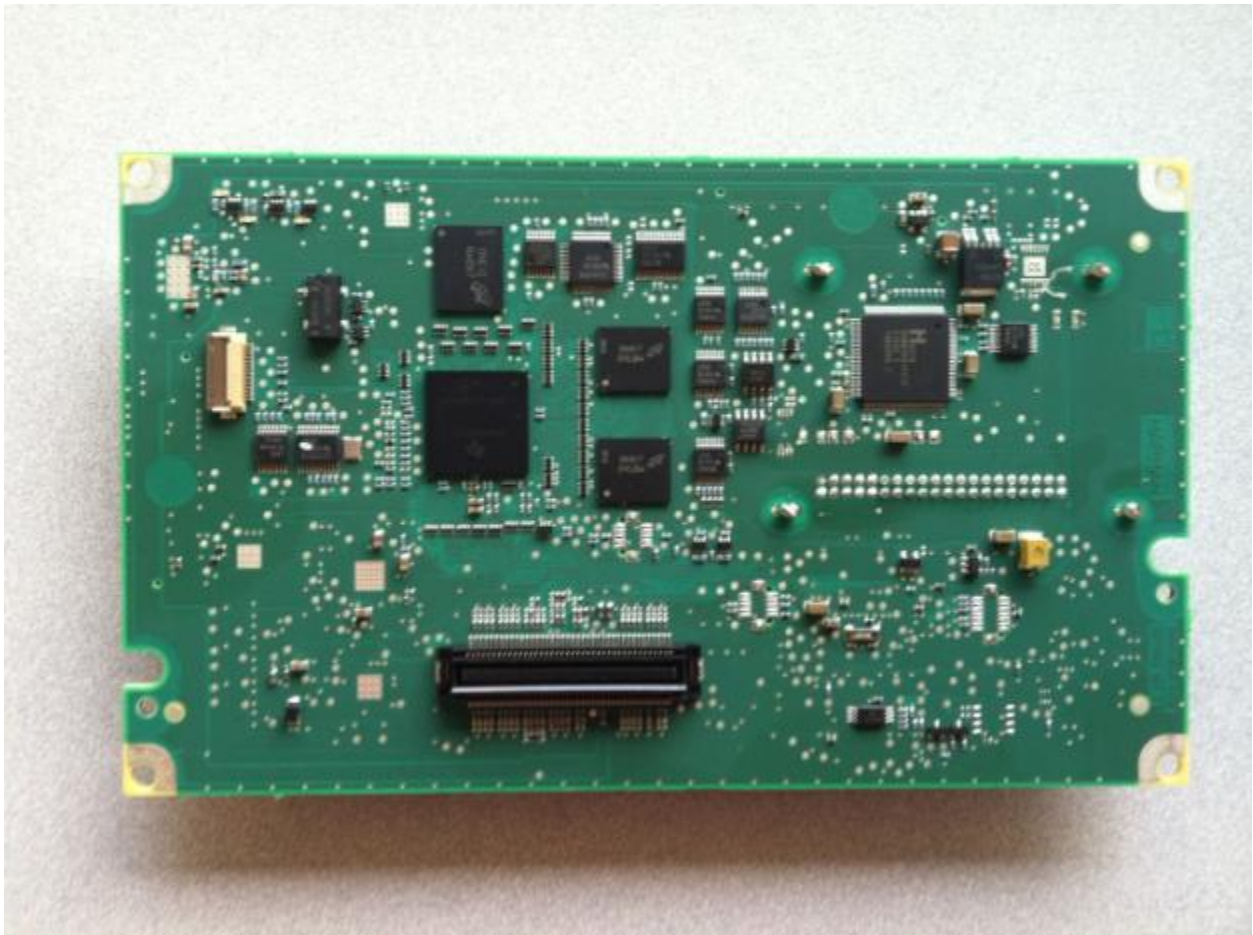




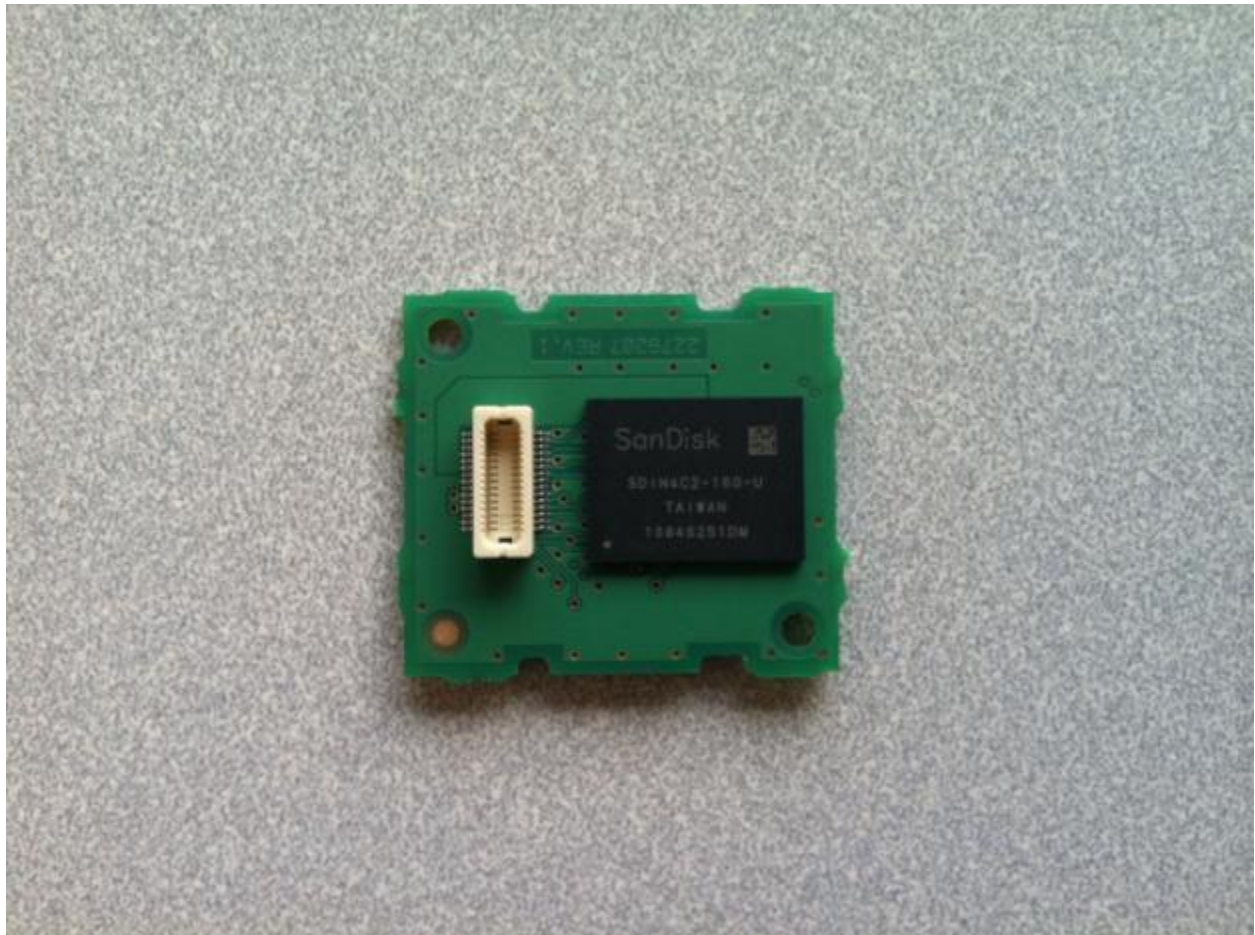
## Main Board Assembly – Front View



## Main Board Assembly – Back View

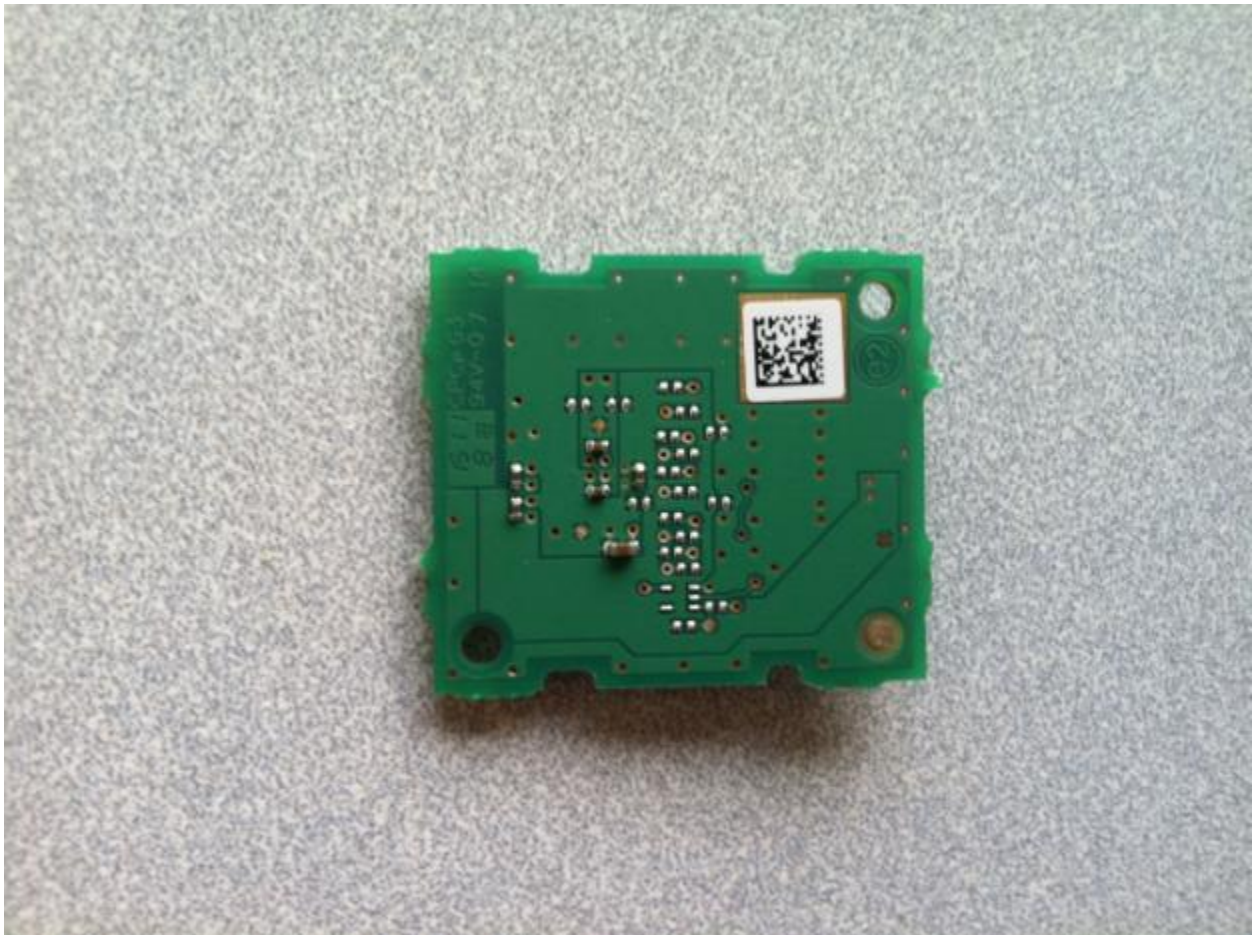


## Flash NAND Assembly – Front View





## Flash NAND Assembly – Rear View



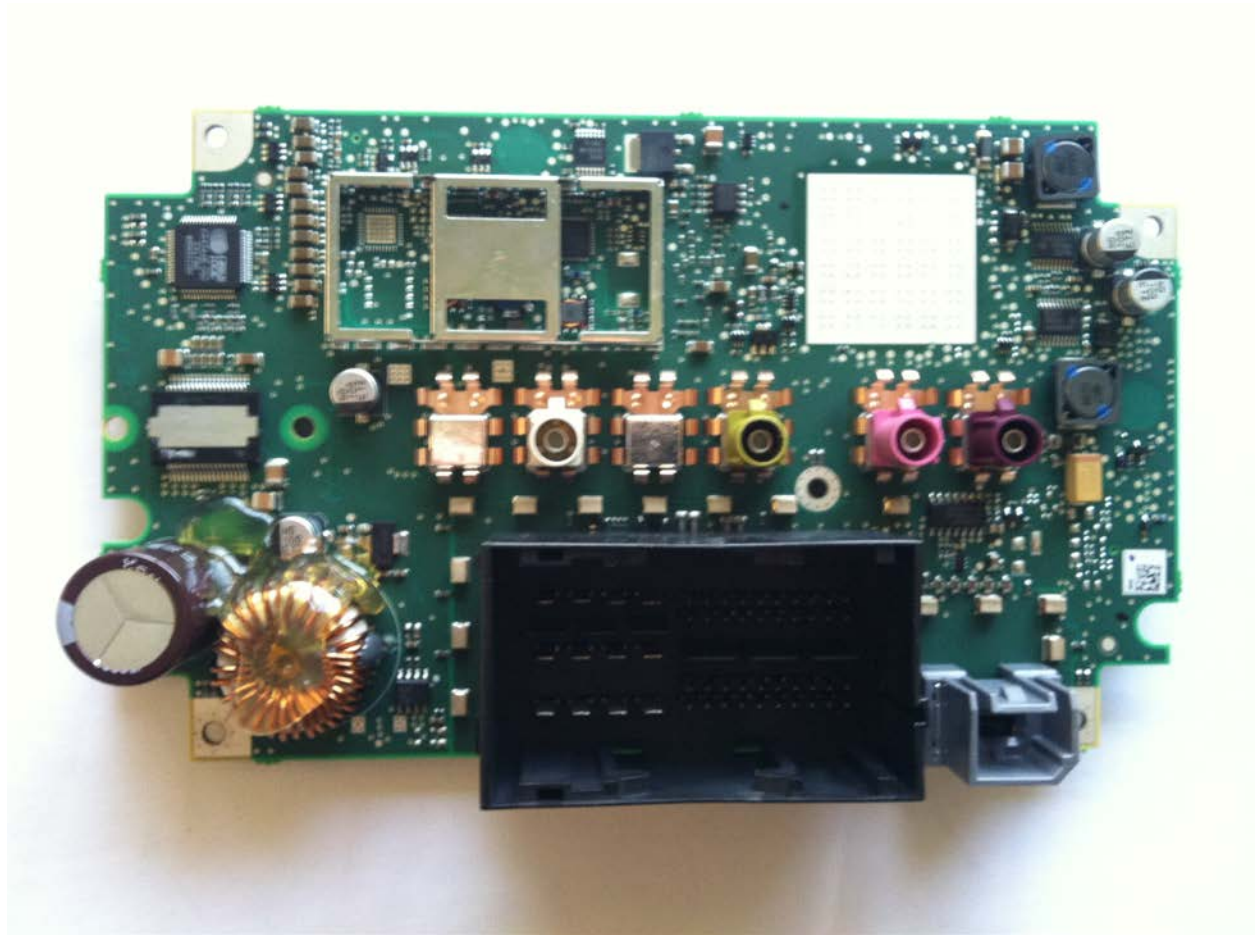


## Back Board Assembly – Front View



CDMA Module (highlighted)

## Back Board Assembly – Back View



## Rear Casting – Front View



## Rear Casting – Back View

