

The HARMAN logo is displayed in white, uppercase, sans-serif font within a dark blue rectangular background.

HARMAN

FCC ID: QNG-BE2801

Type: CMC

Model: VP3 NA

Internal Photos

08/15/2012

Harman Becker Automotive Systems

39001 West 12 Mile Road

Farmington Hills, MI 48331

U.S.A.

Table of Contents

Display - Front View	3
Display - Back View	4
Display Bezel – Front View	5
Display Bezel – Back View	6
Display Shield – Front View.....	7
Display Shield – Back View.....	8
Front Panel Board Assembly – Front View	9
Front Panel Board Assembly – Back View.....	10
Front Casting – Front View.....	11
Front Casting – Back View.....	12
Main Board Assembly – Front View	13
Main Board Assembly – Back View	14
Flash NAND Assembly – Front View.....	15
Flash NAND Assembly – Rear View.....	16
Back Board Assembly – Front View.....	17
Back Board Assembly – Back View.....	18
Rear Casting – Front View	19
Rear Casting – Back View	20

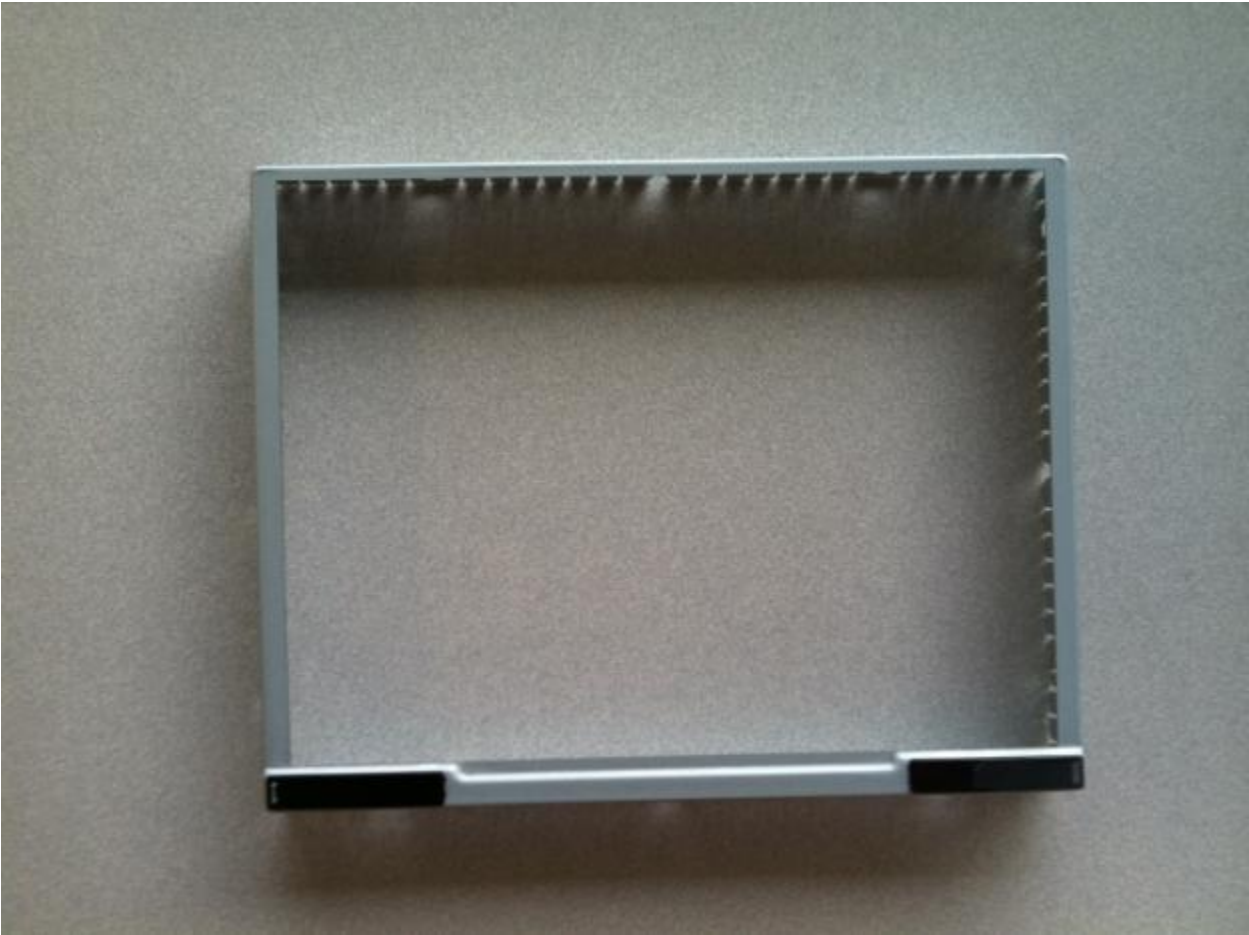
Display - Front View



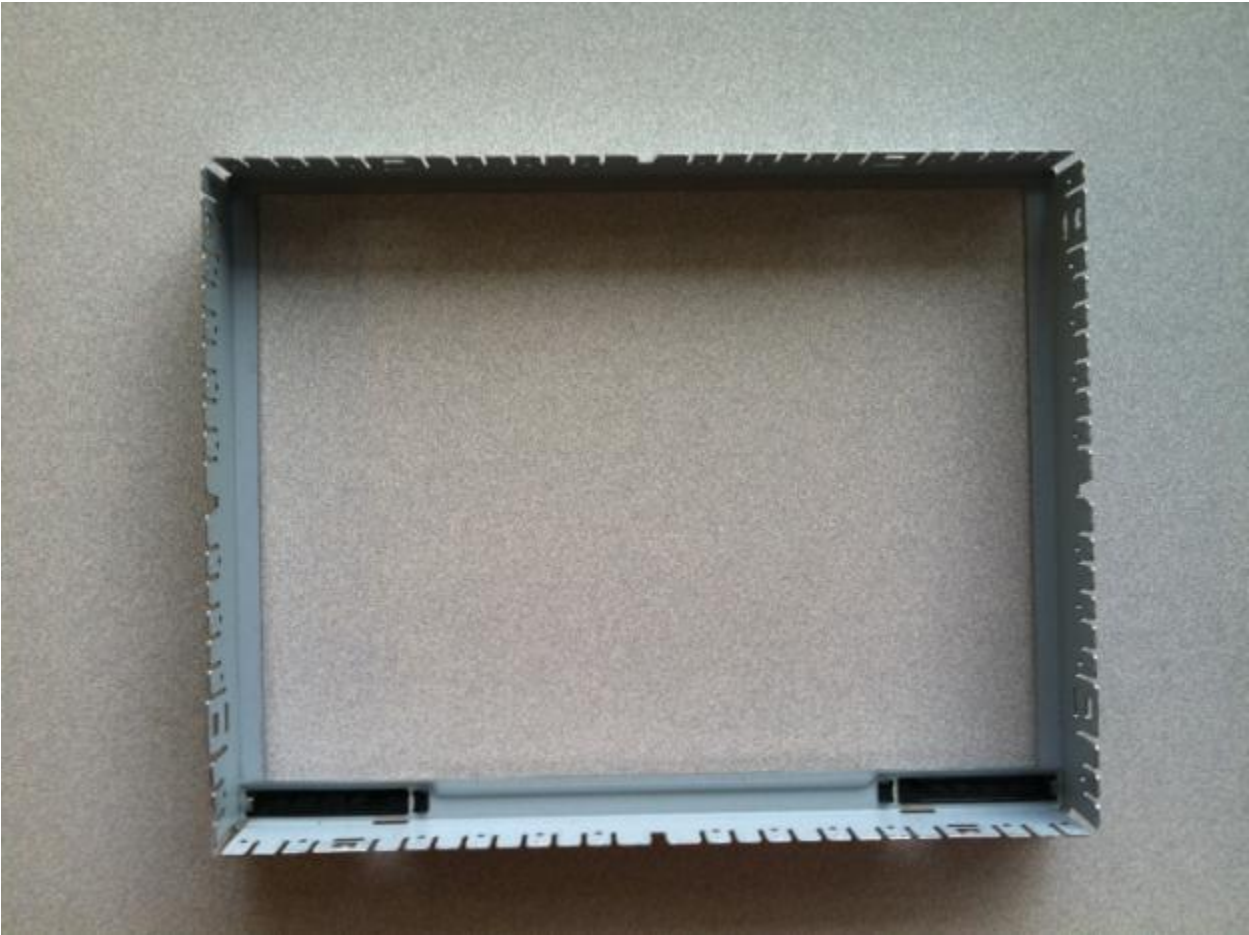
Display - Back View



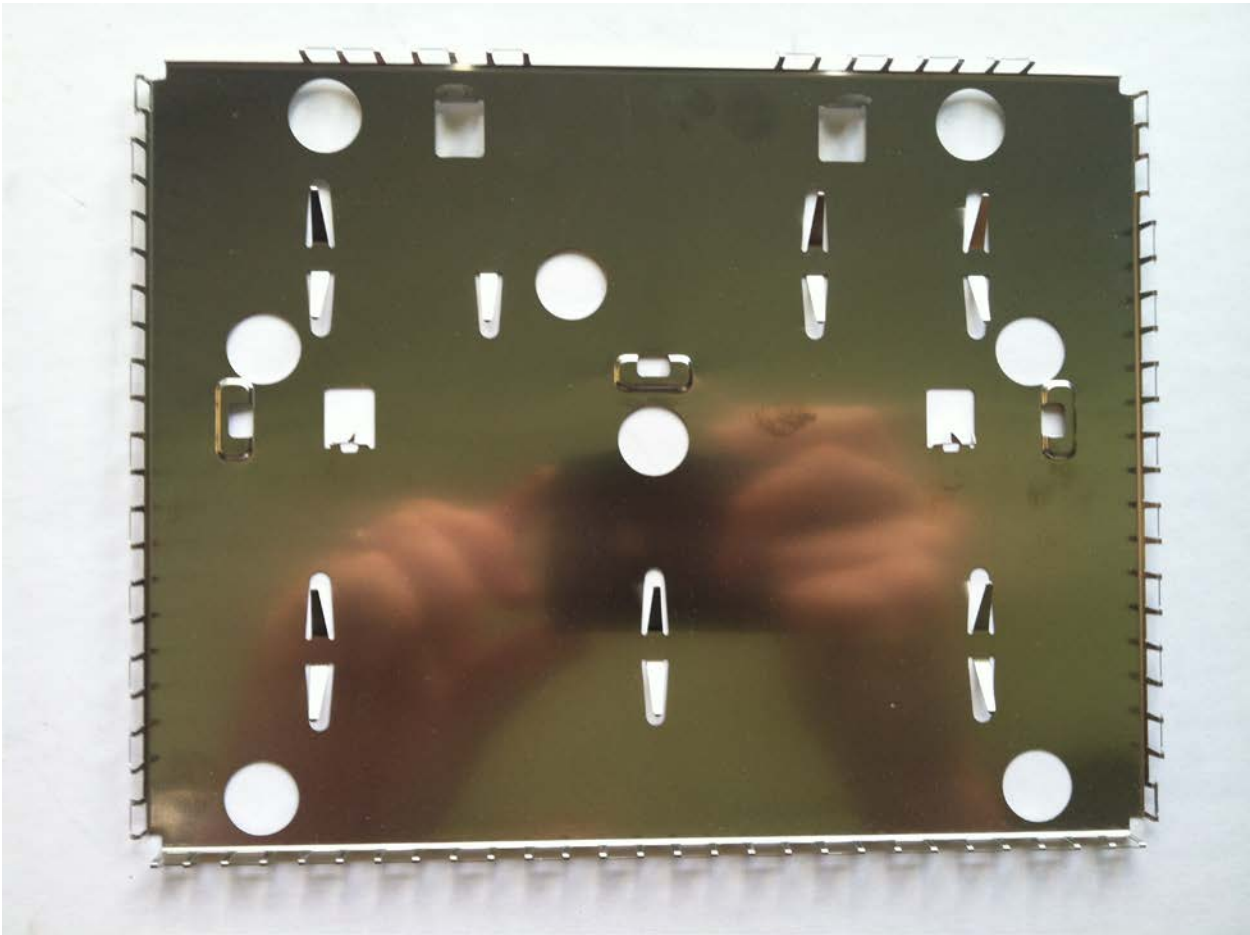
Display Bezel - Front View



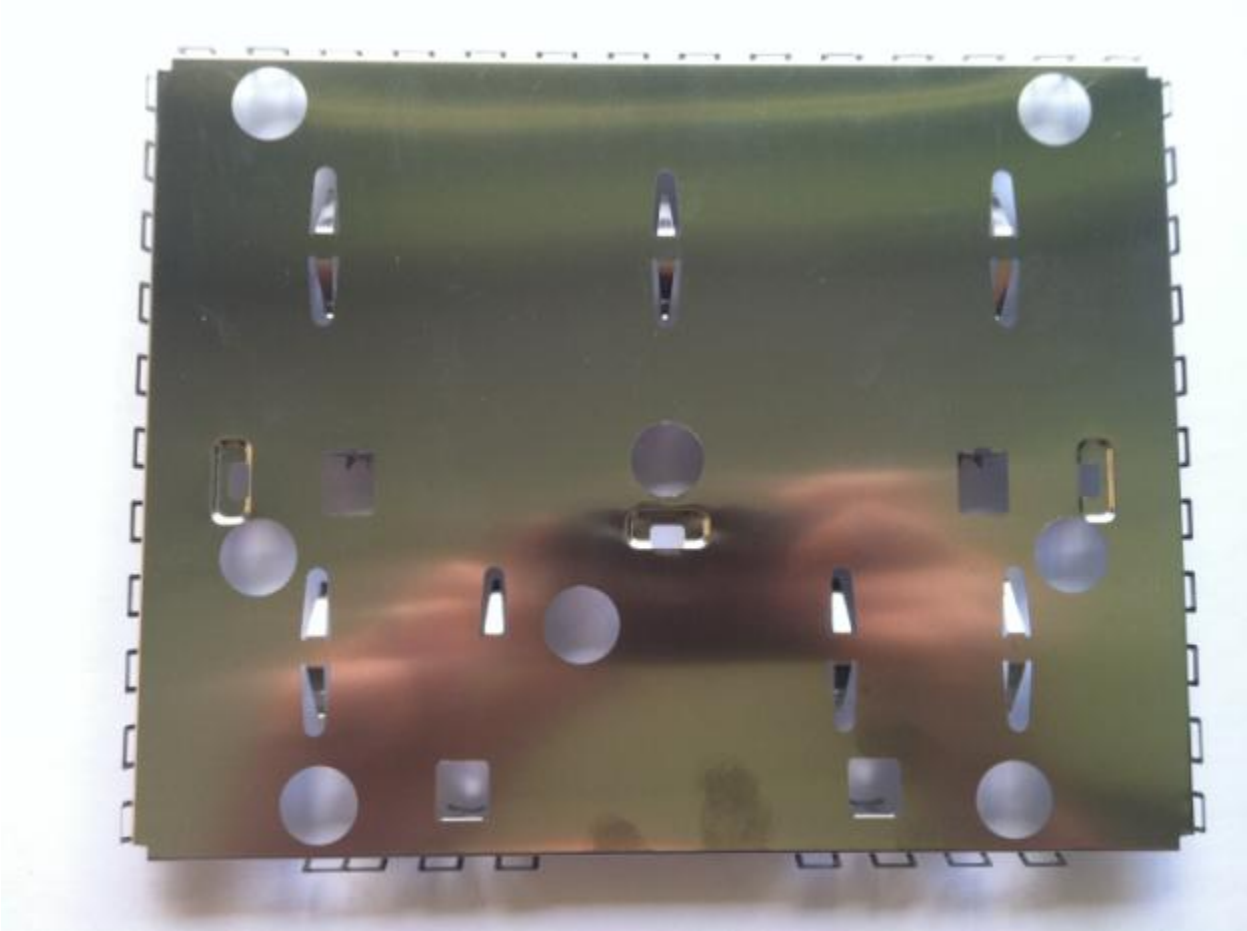
Display Bezel - Back View



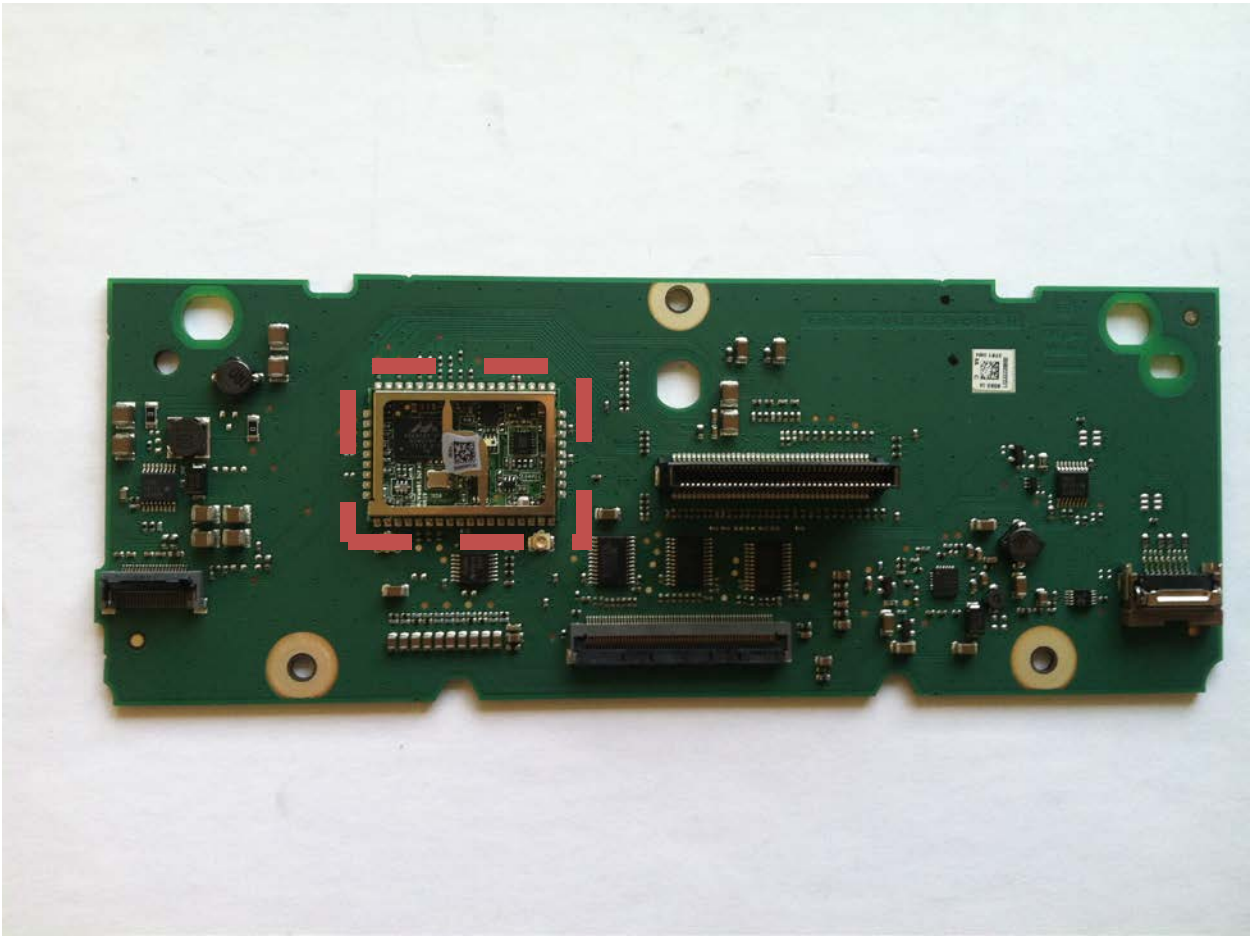
Display Shield - Front View



Display Shield - Back View

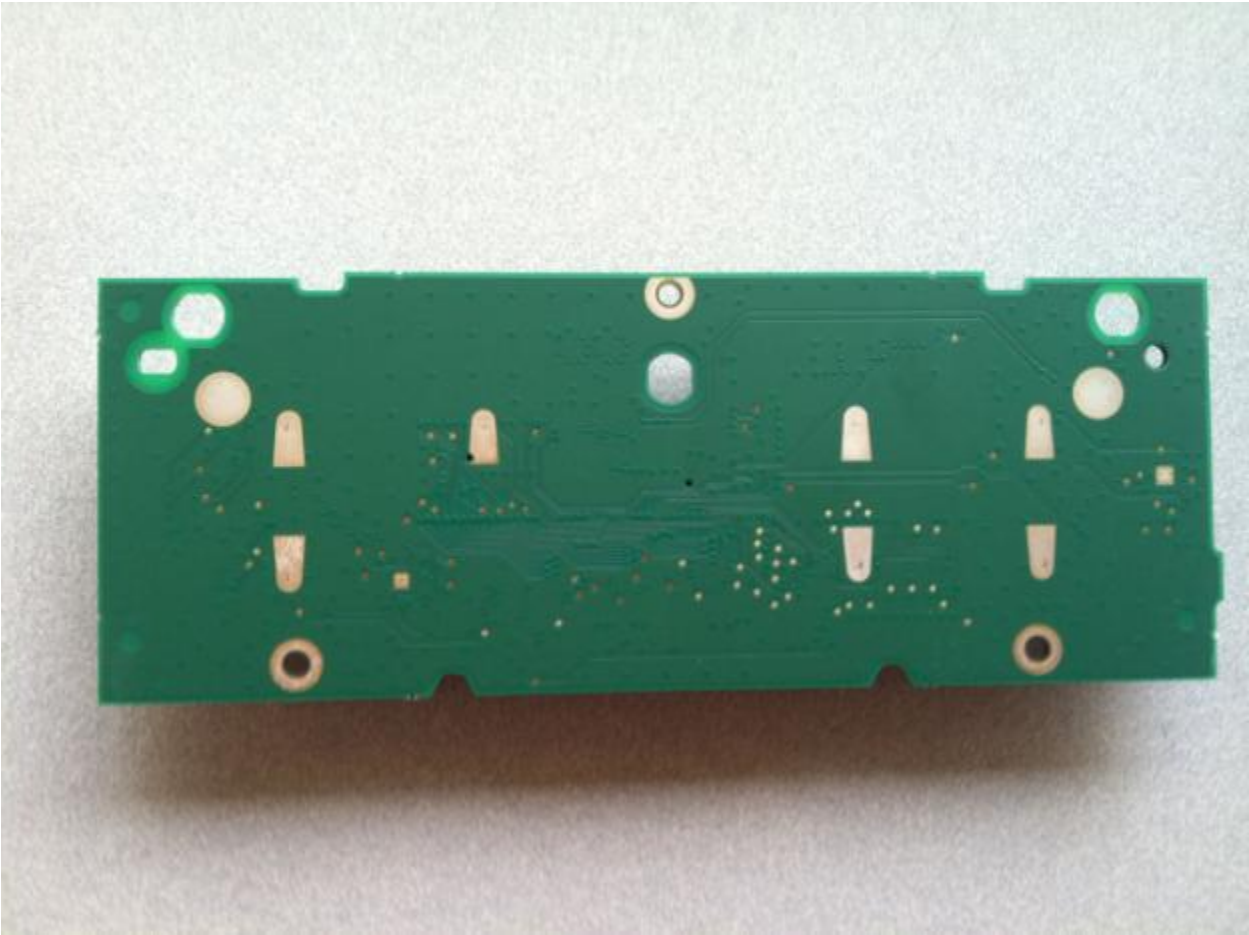


Front Panel Board Assembly - Front View

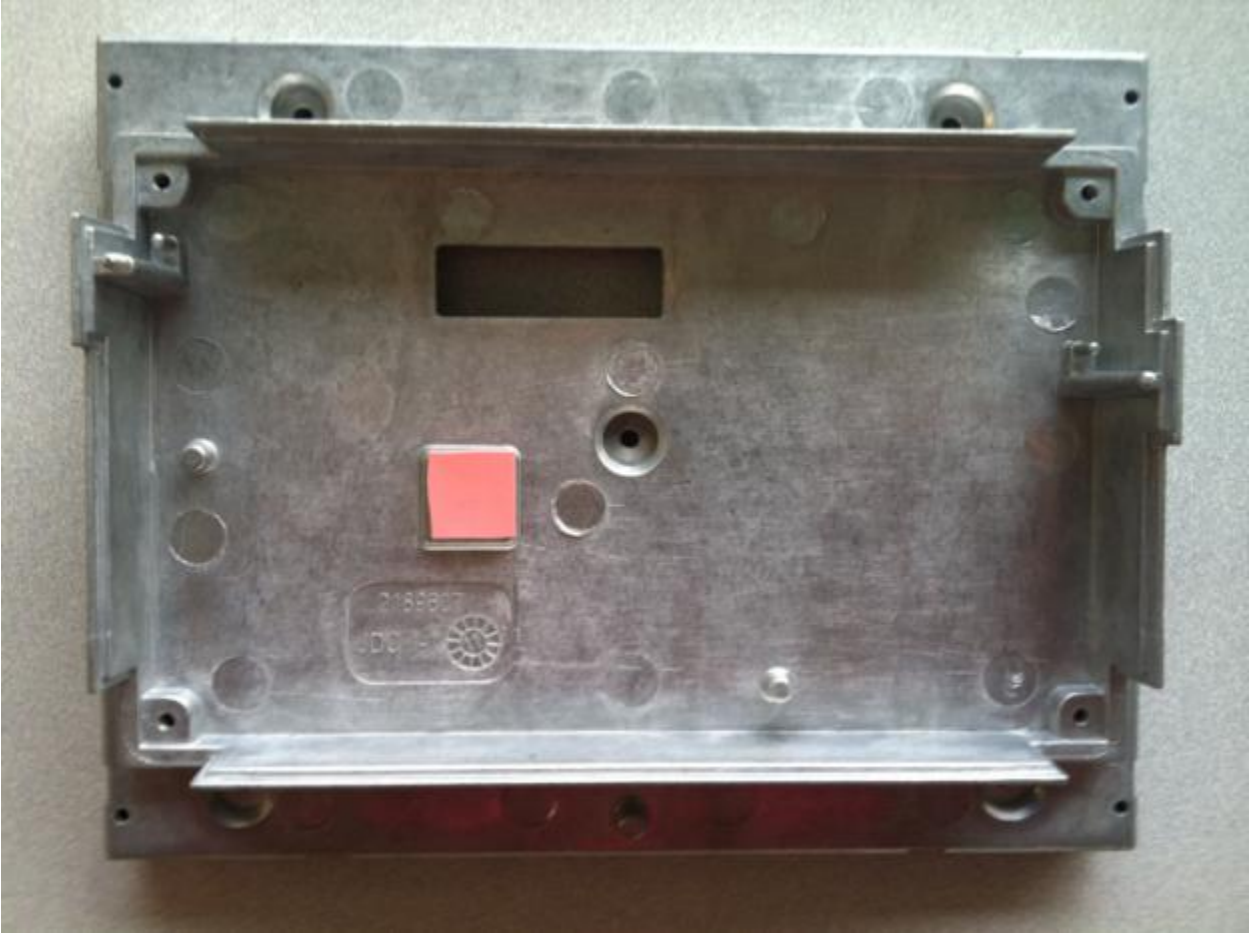


Bluetooth/WLAN Module (highlighted)

Front Panel Board Assembly - Back View



Front Casting - Front View



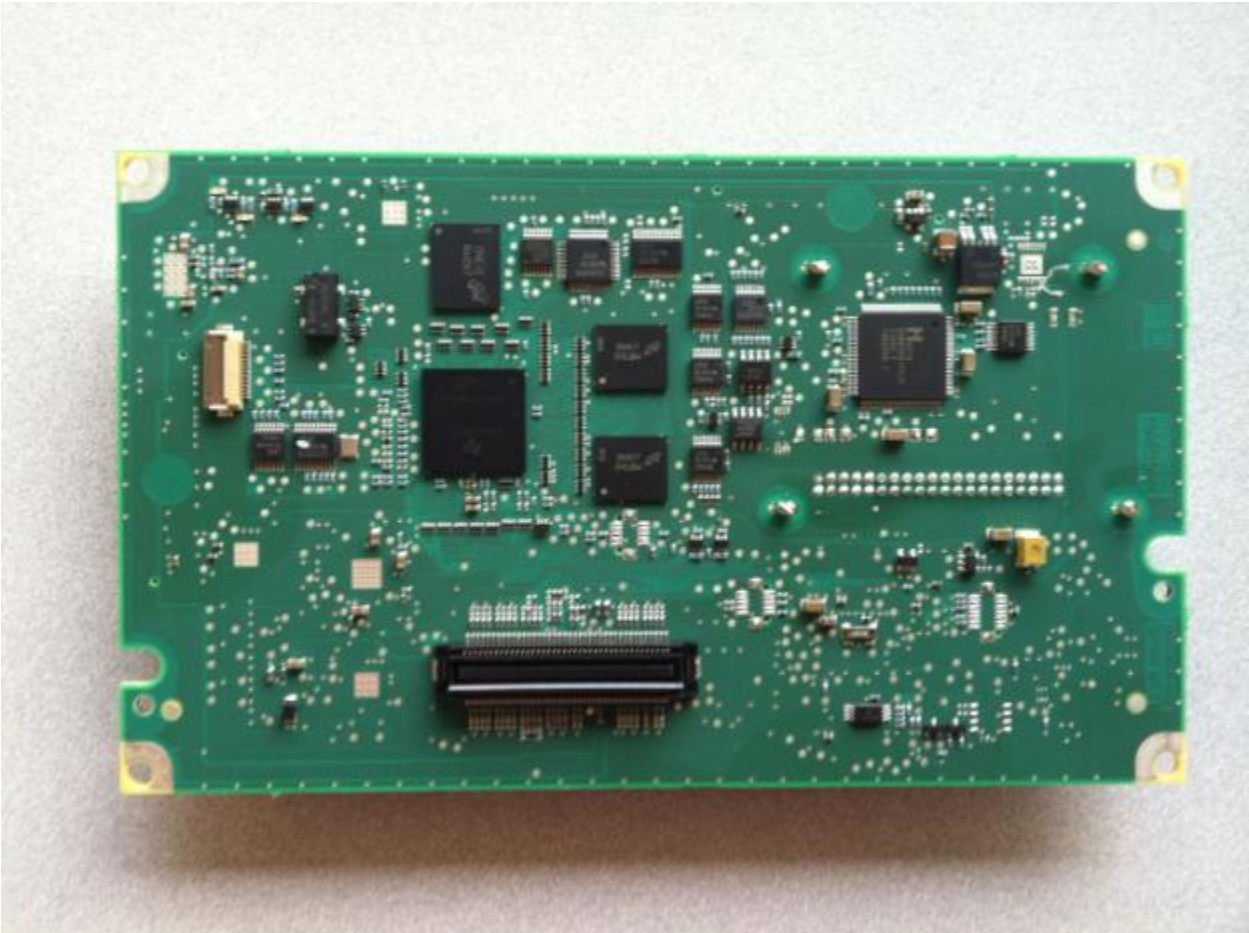
Front Casting - Back View



Main Board Assembly - Front View



Main Board Assembly - Back View



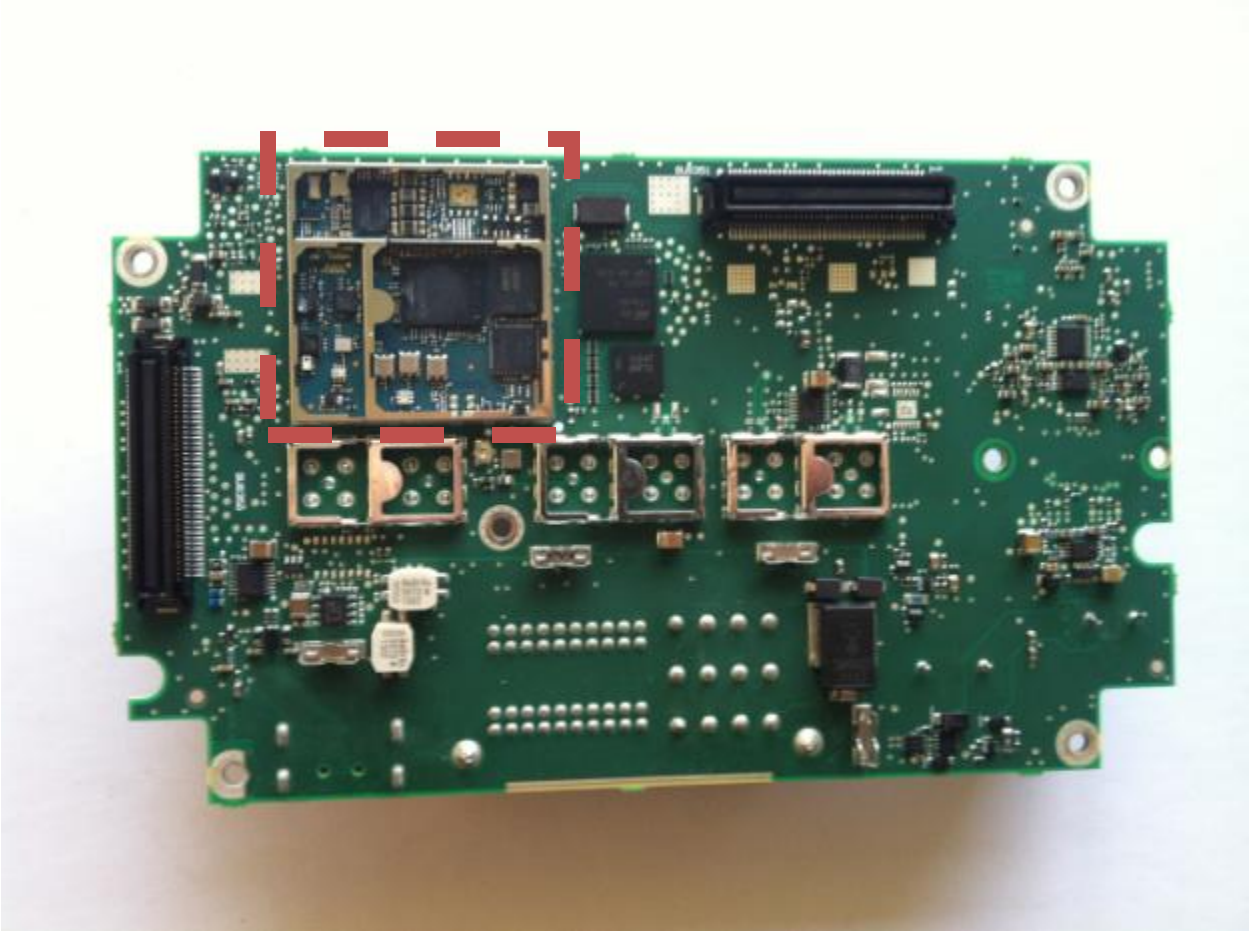
Flash NAND Assembly - Front View



Flash NAND Assembly - Rear View

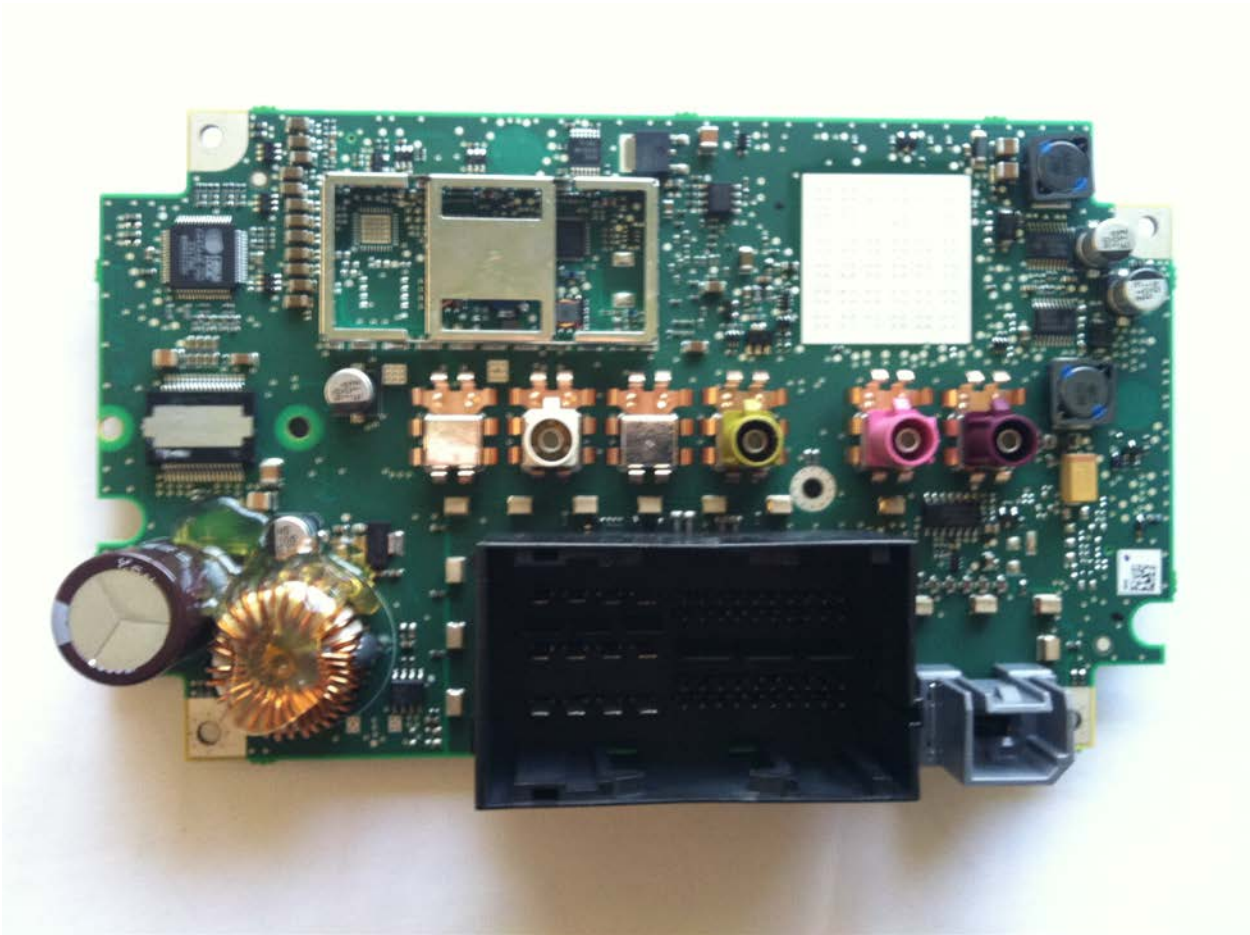


Back Board Assembly - Front View



CDMA Module (highlighted)

Back Board Assembly - Back View



Rear Casting - Front View



Rear Casting - Back View

