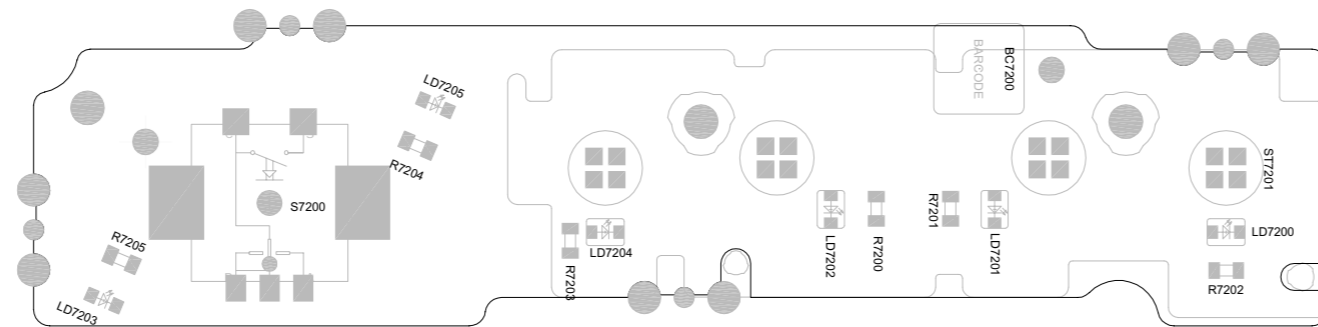


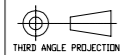
REV	DESCRIPTION	LDC	DCN#	DATE	CK.	AP.	DR.
1	PROTOTYPE RELEASE		082117	09/30/08	AG	MD	CV
A	ADD LCN, BARCODE, E2		100104	01/08/10	AG	MD	CV

ASSEMBLY TOP SIDE COMPONENTS Single Board



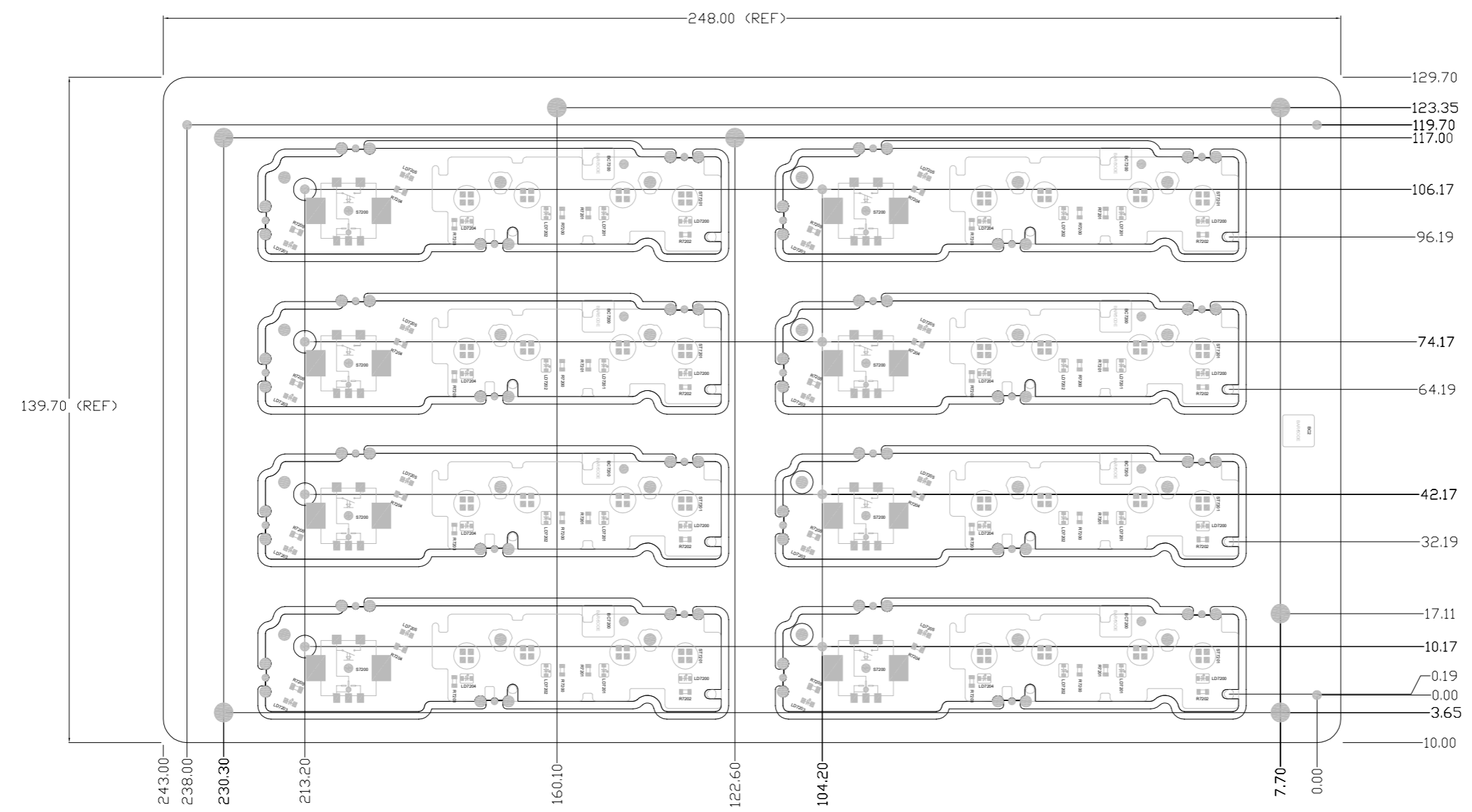
SCALE 4:1 VIEW FROM TOP SIDE

DASH NO.	QTY REQ	FSCM NO.	2025035	FINISHED PRINTED CIRCUIT BOARD	MATERIAL SPECIFICATION	FIND NO.
SHEET: 1 OF 6			UNLESS OTHERWISE SPECIFIED THE FOLLOWING SPECS WILL APPLY:		HARMAN/BECKER AUTOMOTIVE SYSTEMS NORTH AMERICA	
SCALE: NONE			N/A		INFORMATION ON THIS DRAWING IS CONFIDENTIAL AND PROPRIETARY AND MAY NOT BE DISCLOSED TO OTHERS OR REPRODUCED IN ANY WAY WITHOUT THE WRITTEN CONSENT OF HARMAN-BECKER, INC., A DIVISION OF HARMAN INTERNATIONAL.	
SHEET SIZE: D			MATERIAL: SEE NOTES		NAME: PCBA 9091 LEFT 6844	
FIRST USED:			FINISH: SEE NOTES		DRAWING NUMBER: 2025035	
MODEL FILE:					REV: A	
DRAWING FILE:						
REF DRAWING NO.:						

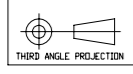


REV	DESCRIPTION	LOC	DCN#	DATE	CK.	AP.	DR.
	SEE SHEET 1						

ASSEMBLY TOP SIDE COMPONENTS Panel



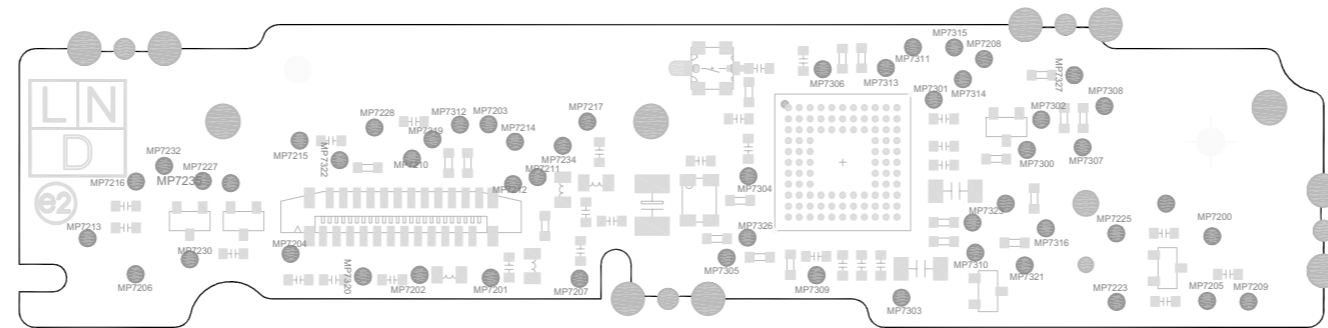
SCALE 2:1 VIEW FROM TOP SIDE



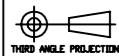
DASH NO.	QTY REQ.	FSCM NO.	2025035	FINISHED PRINTED CIRCUIT BOARD	MATERIAL SPECIFICATION	FIND NO.
SHEET: 2 OF 6	TOLING PURPOSES ONLY		PART OR IDENTIFYING NO.	NOMENCLATURE OR DESCRIPTION	N/A	
SCALE: NONE	CAPABILITY STUDY REQUIRED AT PPAP			UNLESS OTHERWISE SPECIFIED THE FOLLOWING SPECS WILL APPLY.		
SHEET SIZE: D	CAPABILITY STUDY REQUIRED AT PPAP			HARMAN/BECKER AUTOMOTIVE SYSTEMS NORTH AMERICA		
FIRST USED:	CAPABILITY STUDY REQUIRED AT PPAP			INFORMATION ON THIS DRAWING IS CONFIDENTIAL AND PROPRIETARY AND MAY NOT BE DISCLOSED TO OTHERS OR REPRODUCED IN ANY WAY WITHOUT THE WRITTEN CONSENT OF HARMAN-BECKER, INC., A DIVISION OF HARMAN INTERNATIONAL.		
MODEL FILE:	PROCESS CAPABILITY INDEX Cp>=1.33 REQUIRED			REF. DRAWING STANDARDS: ANSAS/ASME Y 14.5M		
DRAWING FILE:	PLUS DRAFT			NAME: PCBA 9091 LEFT 6844		
REF DRAWING NO.:	DRAFT INCLUDED			DRAWING NUMBER: 2025035		
	CUSTOMER REQUIRED			REV. A		
	DIMENSIONS IN MILLIMETERS UNLESS OTHERWISE SPECIFIED			FINISH: SEE NOTES		
	XX = ±0.5 XXX = ±0.50 X.XXX = ±0.130 ANGLES = ±5°			SEE NOTES		

REV	DESCRIPTION	LOC	DCNR	DATE	CK	AP	DR
	SEE SHEET 1						

Test Point Drawing Single Board



SCALE 4:1 View from Bottom Side



THIRD ANGLE PROJECTION

DASH NO.		QTY REQ		FSCM NO.		PART OR IDENTIFYING NO.		NOMENCLATURE OR DESCRIPTION		MATERIAL SPECIFICATION		FIND NO.	
-		-		-		2025035		FINISHED PRINTED CIRCUIT BOARD		-		-	
SHEET: 5 OF 6		SCALE: NONE		FIRST USED:		MODEL FILE:		DRAWING FILE:		REF DRAWING NO.:		UNLESS OTHERWISE SPECIFIED THE FOLLOWING SPECS WILL APPLY:	
D		D		NONE		NONE		NONE		NONE		N/A	
DIMENSIONS IN MILLIMETERS UNLESS OTHERWISE SPECIFIED:		X.X = ±0.5 X.XX = ±0.50 X.XXX = ±0.130		ANGLES = ±5°		MATERIAL: SEE NOTES		FINISH: SEE NOTES		NAME: PCBA 9091 LEFT 6844		DRAWING NUMBER: 2025035	
REV. A													

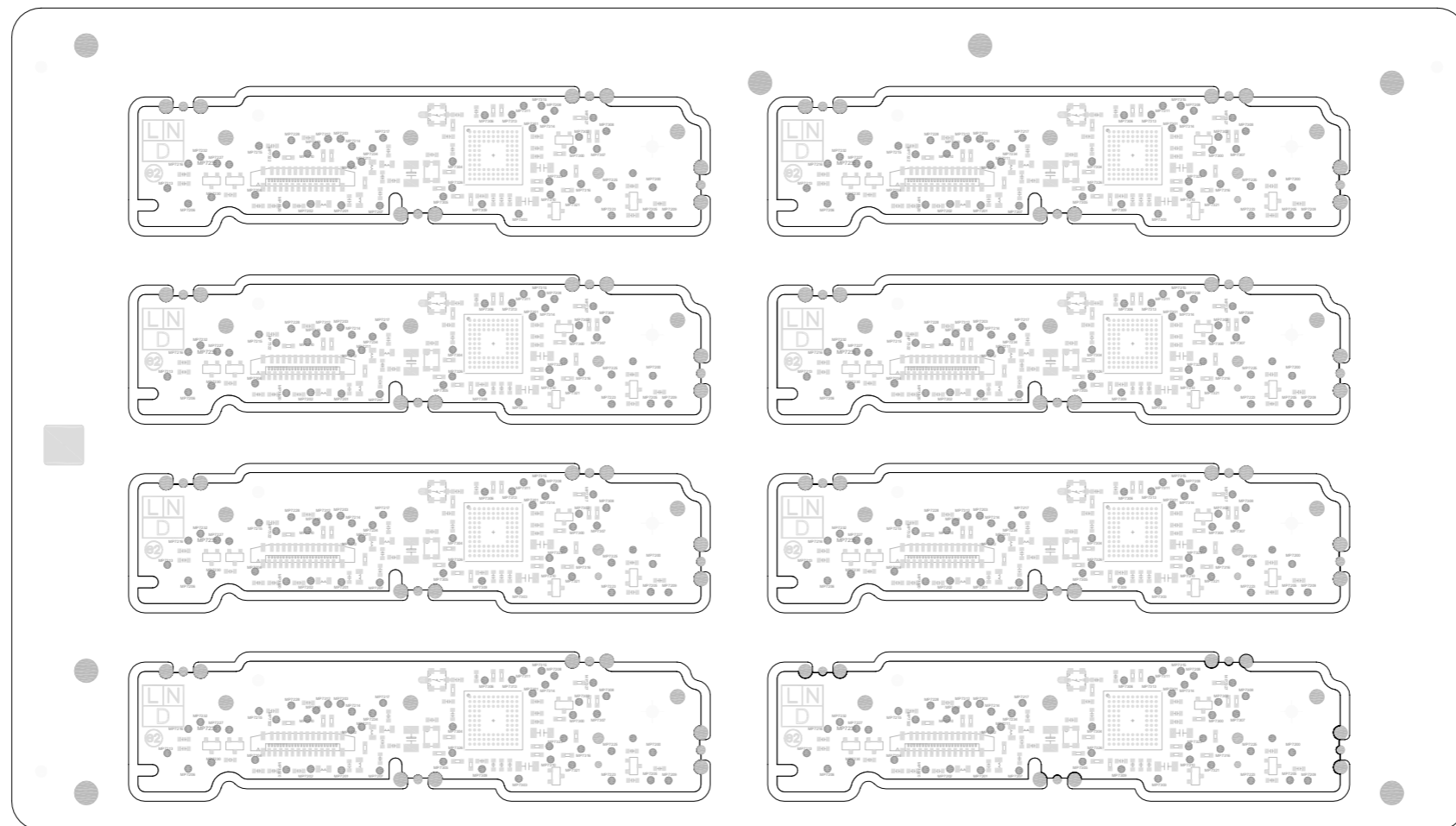


INFORMATION ON THIS DRAWING IS CONFIDENTIAL AND PROPRIETARY AND MAY NOT BE DISCLOSED TO OTHERS OR REPRODUCED IN ANY WAY WITHOUT THE WRITTEN CONSENT OF HARMAN-BECKER, INC., A DIVISION OF HARMAN INTERNATIONAL.

REF. DRAWING STANDARDS: ANSISASME Y 14.5M

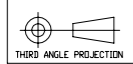
REV	DESCRIPTION	LOC	DCNM	DATE	CK.	AP.	DR.
	SEE SHEET 1						

Test Point Drawing Panel



SCALE 2:1 VIEW FROM BOTTOM SIDE

DASH NO.	QTY REQ	FSCM NO.	2025035	FINISHED PRINTED CIRCUIT BOARD	MATERIAL SPECIFICATION	FIND NO.
SHEET: 6 OF 6	TOOLING PURPOSES ONLY			UNLESS OTHERWISE SPECIFIED THE FOLLOWING SPECS WILL APPLY:		
SCALE: NONE	<input checked="" type="checkbox"/> CAPABILITY STUDY REQUIRED AT PPAP <input checked="" type="checkbox"/> CAPABILITY STUDY REQUIRED AT PPAP (MACHINE INSPECTION REQUIRED STATED IN CONTROL PLAN) <input checked="" type="checkbox"/> CAPABILITY STUDY REQUIRED AT PPAP (PROCESS CAPABILITY INDEX (Cp) > 1.33 REQUIRED)			N/A	<small>INFORMATION ON THIS DRAWING IS CONFIDENTIAL AND PROPRIETARY AND MAY NOT BE DISCLOSED TO OTHERS OR REPRODUCED IN ANY WAY WITHOUT THE WRITTEN CONSENT OF HARMAN-BECKER, INC., A DIVISION OF HARMAN INTERNATIONAL.</small>	
SHEET SIZE: D	FIRST USED:	<input checked="" type="checkbox"/> PLUS DRAFT <input checked="" type="checkbox"/> MINUS DRAFT <input checked="" type="checkbox"/> DRAFT INCLUDED <input checked="" type="checkbox"/> CUSTOMER REQUIRED		MATERIAL:	SEE NOTES	NAME: PCBA 9091 LEFT 6844
MODEL FILE:	DRAWING FILE:	DIMENSIONS IN MILLIMETERS UNLESS OTHERWISE SPECIFIED: X.X = ±0.5 X.XX = ±0.50 X.XXX = ±0.130 ANGLES = ±5°		FINISH:	SEE NOTES	DRAWING NUMBER: 2025035
REF DRAWING NO.						REV. A



THIRD ANGLE PROJECTION