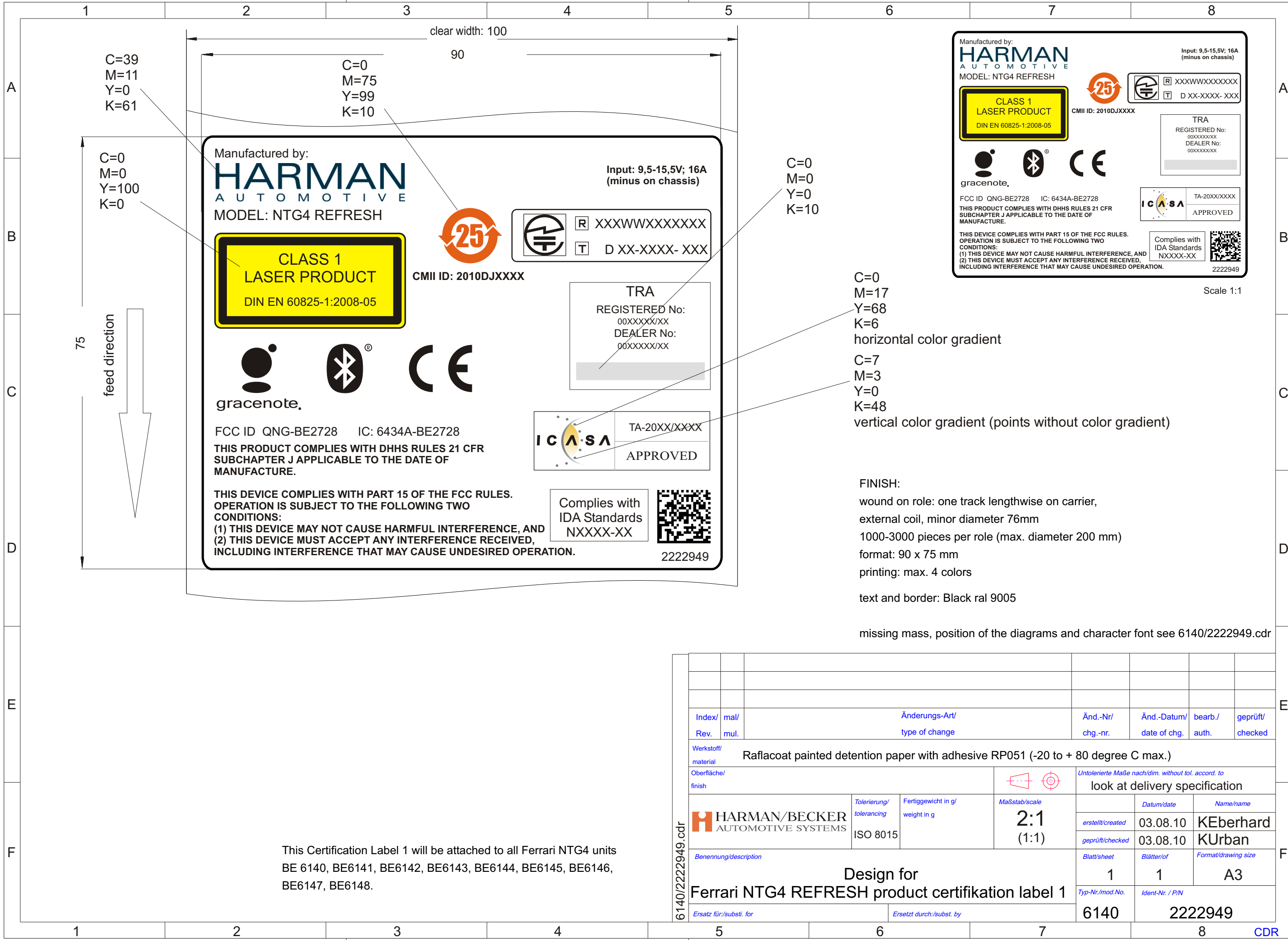


The reproduction, distribution and utilization of this document as well as the communication of its contents to others without explicit authorization is prohibited. Offenders will be held liable for the payment of damages. All rights reserved in the event of the grant of a patent, utility model or design.

Weitergabe sowie Vervielfältigung dieses Dokuments, Verwertung und Mitteilung seines Inhalts sind verboten, soweit nicht ausdrücklich gestattet. Zuwiderhandlungen verpflichten zu Schadensersatz. Alle Rechte für den Fall der Patent-, Gebrauchsmuster- oder Geschmacksmusterertragung vorbehalten.



C=39
M=11
Y=0
K=61

C=0
M=75
Y=99
K=10

C=0
M=0
Y=100
K=0

C=0
M=0
Y=0
K=10

C=0
M=17
Y=68
K=6

horizontal color gradient

C=7
M=3
Y=0
K=48

vertical color gradient (points without color gradient)

FINISH:

- wound on role: one track lengthwise on carrier, external coil, minor diameter 76mm
- 1000-3000 pieces per role (max. diameter 200 mm)
- format: 90 x 75 mm
- printing: max. 4 colors

text and border: Black ral 9005

missing mass, position of the diagrams and character font see 6140/2222949.cdr

This Certification Label 1 will be attached to all Ferrari NTG4 units BE 6140, BE6141, BE6142, BE6143, BE6144, BE6145, BE6146, BE6147, BE6148.

Index/ mal/		Änderungs-Art/		Änd.-Nr/	Änd.-Datum/	bearb./	geprüft/
Rev. mul.		type of change		chg.-nr.	date of chg.	auth.	checked
Werkstoff/ Raflacoat painted detention paper with adhesive RP051 (-20 to + 80 degree C max.)							
material							
Oberfläche/ finish				Untolerierte Maße nach/dim. without tol. accord. to			
HARMAN/BECKER AUTOMOTIVE SYSTEMS				look at delivery specification			
Tolerierung/ tolerancing		Fertiggewicht in g/ weight in g		Maßstab/scale		Datum/date	
ISO 8015				2:1 (1:1)		03.08.10	
Benennung/description				Blatt/sheet		Blätter/of	
Design for Ferrari NTG4 REFRESH product certification label 1				1		1	
				Format/drawing size		A3	
Ersatz für/subst. for				Typ-Nr./mod.No.		Ident-Nr. / P/N	
				6140		2222949	
Ersetzt durch/subst. by							

6140/2222949.cdr