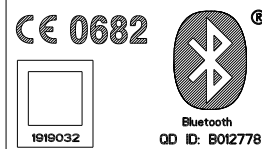


**CLASS 1
LASER PRODUCT**
DIN EN 60825-1:2003-10

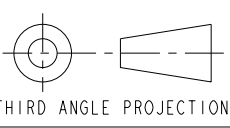
This device complies with Part 15 of the FCC Rules. Operation is subject to the following two conditions:
(1) this device may not cause harmful interference, and
(2) this device must accept any interference received, including interference that may cause undesired operation.
This product complies with DHSS Rules 21 CFR Subchapter J applicable to the date of manufacture.



HARMAN/BECKER
AUTOMOTIVE SYSTEMS

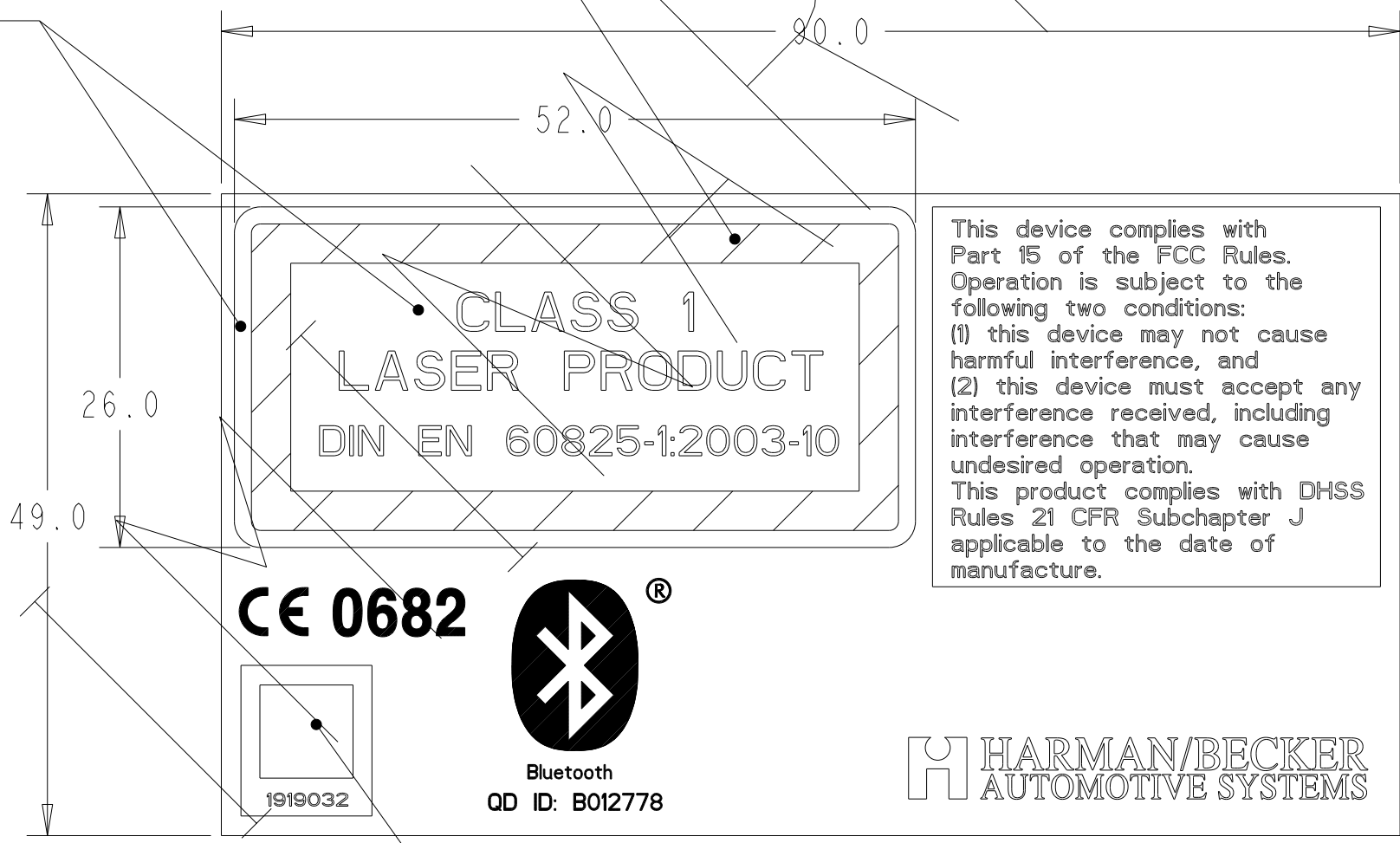
- NOTES
- CLASS 1 LASER PRODUCT TEXT:
FONT BLOCK FILLED
HEIGHT: 3 mm
TEXT CENTERED WITH IN THE FRAME
BACKGROUND COLOR:
WITHIN AND 1 mm OUTSIDE THE FRAME: YELLOW RAL 1021
 - FCC RULES TEXT:
FONT : DIN 1451
HEIGHT: 1.3 mm
COLOR (TEXT AND FRAME): BLACK RAL 9005
 - BLUETOOTH LOGO
SIZE OR SHAPE & KEEP OUT ZONE: PER BLUETOOTH BRAND BOOK 2007 AND GRAPHIC .ESP FILES
COLOR: BLUE PANTONE 286
 - BACKGROUND WHITE
 - HBAS PART NUMBER TO APPEAR IN DATA MATRIX FORMAT WITH HUMAN READABLE FORMAT BELOW.
BACKGROUND: WHITE
DATAMATRIX AND TEXT: PANTONE BLACK OR BLACK RAL 9005
 - APPLICABLE CHRYSLER SPECIFICATIONS: PS-4480 AIBDH5-8
 - PPAP APPROVAL REQUIRES SUCCESSFUL MACHINE READ OF THE DATAMATRIX PART NUMBER DEFINITION AND ARTWORK SIGNOFF
 - CE MARK
FONT: USE THE "CE" APPROVED FONT
SIZE: APPROXIMATELY AS SHOWN
COLOR: PANTONE BLACK OR BLACK RAL 9005

- HBAS LOGO:
H TO BE FILLED PANTANE "ORANGE" TBD
HARMAN/BECKER:
FONT: TIMES
COLOR: PANTONE BLACK OR BLACK RAL 9005
AUTOMOTIVE SYSTEMS:
FONT: TIMES
COLOR: PANTONE "GREY" TBD



BLK FRAME

YELLOW



This device complies with Part 15 of the FCC Rules. Operation is subject to the following two conditions:
(1) this device may not cause harmful interference, and
(2) this device must accept any interference received, including interference that may cause undesired operation.
This product complies with DHSS Rules 21 CFR Subchapter J applicable to the date of manufacture.

SCALE 2.000

2D DATAMATRIX ZONE

REV	DESCRIPTION	LOC	D.R.#	DATE	CK.	AP.	DR.
A	PRODUCTION RELEASED			10/28/08	RJ		HG

PART NO.	SUFFIX	ISSUE	DESCRIPTION
-	-	-	-

SHEET: 1 OF 1	TOOLING PURPOSES ONLY	UNLESS OTHERWISE SPECIFIED THE FOLLOWING SPECS WILL APPLY:
SCALE: 1.000	CAPABILITY STUDY REQUIRED AT PPAP	
SHEET SIZE: B	CAPABILITY STUDY REQUIRED AT PPAP ONGOING INSPECTION REQUIRED (STATED IN CONTROL PLAN)	
FIRST USED:	CAPABILITY STUDY REQUIRED AT PPAP ONGOING SPC DATA REQUIRED PROCESS CAPABILITY INDEX Cpk>1.33 REQUIRED	
MODEL FILE: 1919032	PLUS DRAFT	
DRAWING FILE: 1919032	MINUS DRAFT	MATERIAL: 0.05 mm OR .002 in POLYESTER BASE L-23 PERMANENT ACRYLIC ADHESIVE
REF DRAWING NO.: 1813366	DRAFT INCLUDED	FINISH: SUPPLY IN STRIP FORM MARK PART NUMBER IN CARRIER
	★ CUSTOMER REQUIRED	
	DIMENSIONS IN MILLIMETERS UNLESS OTHERWISE SPECIFIED: X.X = ±0.5 X.XX = ±0.25 X.XXX = ±0.130 ANGLES = ±1.0	

HARMAN/BECKER
AUTOMOTIVE SYSTEMS
FARMINGTON HILLS

INFORMATION ON THIS DRAWING IS CONFIDENTIAL AND PROPRIETARY AND MAY NOT BE DISCLOSED TO OTHERS OR REPRODUCED IN ANY WAY WITHOUT THE WRITTEN CONSENT OF HARMAN-BECKER, INC., A DIVISION OF HARMAN INTERNATIONAL.

REF. DRAWING STANDARDS: ANS I YASME Y 14.5M

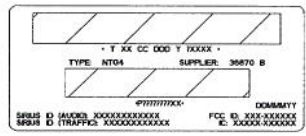
NAME:
LBL PRINT 45X90 NTG4 LSR FCC BT 6817

DRAWING NUMBER:
1919032

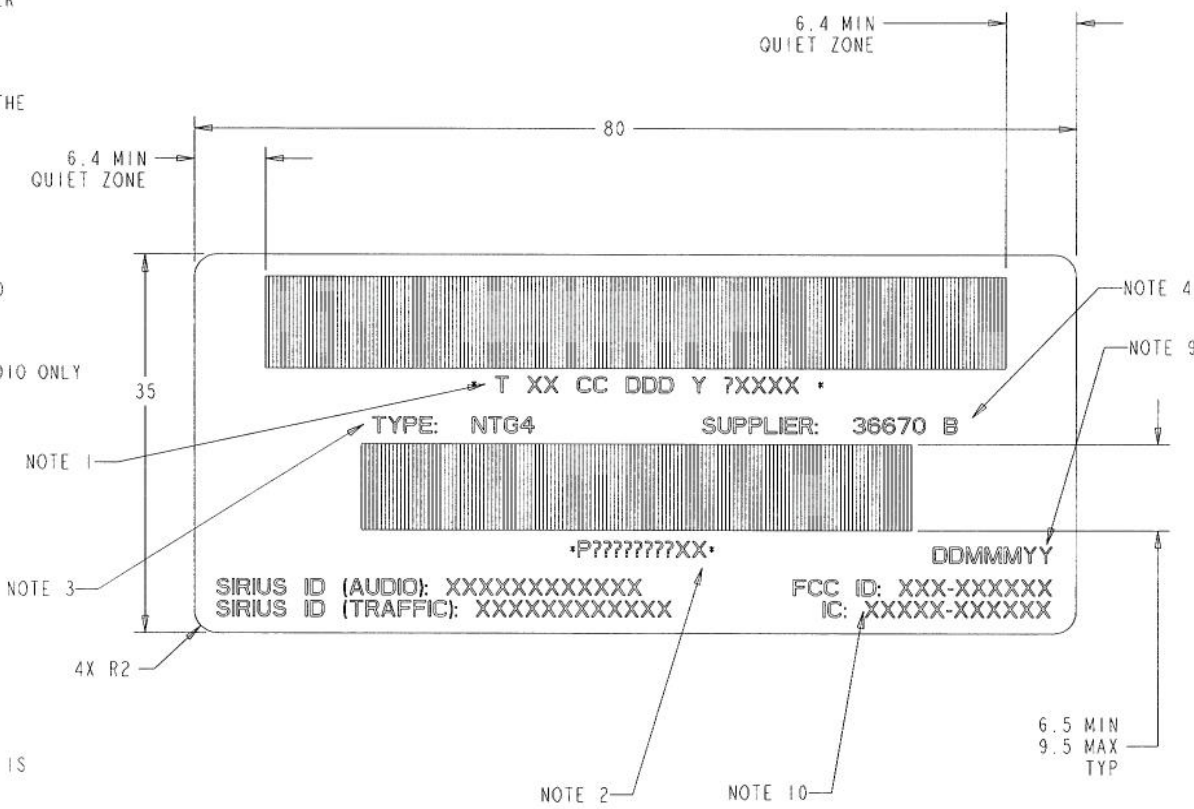
REV.
A

REV	DESCRIPTION	LOC	D.R.#	DATE	CK	AP	DR
A	RELEASE FOR PRODUCTION		062168	18AUG05	AT	AT	TND
B	ADD FCC AND IC ID'S	10-E	082163	09SEP08	AT	RJ	HG

- NOTES:
 LABEL INFORMATION:
 1. HUMAN READABLE INTERPRETATION (BAR CODE SYMBOL)
 T XX CC DDD Y ?XXXX
 T= DESIGNATES THE BEGINNING OF THE TRACEABILITY INFORMATION.
 XX = TWO CHARACTER CODE USED FOR TRACKING PURPOSE.
 CC = BE
 DDD = THREE DAY DIGIT OF YEAR
 Y = LAST DIGIT OF THE YEAR
 ?XXXX = FIVE DIGIT NUMBER RELATIVE TO PLANT'S DAILY PRODUCTION. THE CHARACTER MAYBE ALPHA-NUMERIC OR A NUMBER
2. P= DATA IDENTIFIER - DIAMLER CHRYSLER CORP.
 PRODUCTION PART NO.
 12345678XX = CHRYSLER PART NUMBER. NUMBER SHOWN IS FOR REFERENCE ONLY. PLEASE REFER TO MANUFACTURING PLANT FOR THE CORRECT NUMBER
 XX = INDICATES MOST RECENT REVISION (AA, AB..ETC.)
3. NAME OF PROGRAM (TYPE)
4. SUPPLIER CODE
5. SIRIUS ID NUMBER:
 -FONT AND SIZE SHALL BE THE SAME AS FONT USED FOR THE RADIO SERIAL NUMBER.
 -DUAL BAND MODULE:
 -SIRIUS ID (RADIO) - FOR SDARS EQUIPPED RADIO ONLY
 -SIRIUS ID (TRAFFIC) - FOR DUAL BAND SDARS EQUIPPED RADIO ONLY
 -SINGLE BAND MODULE:
 -SIRIUS ID (RADIO) - FOR SDARS EQUIPPED RADIO ONLY
6. TYPE, SUPPLIER FONT INFO:
 - ALL FONTS - SWISS MONO 721
 - STANDARD OUTLINE
7. BAR CODE TYPE: CODE 39
8. MATERIAL: FLEXCON THERMFILM SELECT 21830
 ADHESIVE: PERMANENT
 COLOR: WHITE
9. DATE OF MANUFACTURE
 DD: TWO DIGIT DAY NUMBER
 MMM: FIRST THREE LETTERS OF THE MONTH
 YY: TWO DIGIT YEAR NUMBER
10. FCC AND IC ID ALPHANUMERIC. THE MASTER LIST FOR THESE ID IS PROVIDED BY THE FARMINGTON HILLS, MI. EMC DEPARTMENT TO MANUFACTURING AT WASHINGTON, MO. THE NEXT CHART IS FOR REFERENCE ONLY.



SCALE 1.000



SALES CODE	FCC ID	IC ID
RER	ONG-BE2726	6434A-BE2726
REU	ONG-BE2727	6434A-BE2727

ITEM	PART NO.	QUANTITY	DESCRIPTION
HARMAN/BECKER AUTOMOTIVE SYSTEMS FARMINGTON HILLS			
INFORMATION ON THIS DRAWING IS CONFIDENTIAL AND PROPRIETARY AND MAY NOT BE DISCLOSED TO OTHERS OR REPRODUCED IN ANY WAY WITHOUT THE WRITTEN CONSENT OF HARMAN-BECKER, INC. A DIVISION OF HARMAN INTERNATIONAL.			REF. DRAWING STANDARDS: ANSI Y 14.5M 1994
NAME: LABEL PROD INFO NTG4			DRAWING NUMBER: 1800132
FINISH:			REV. B

SHEET: 1 OF 1
 SCALE: 3.000
 SHEET SIZE: C
 FIRST USED:
 MODEL FILE: 1800132
 DRAWING FILE:
 REF. DRAWING NO.:

TOOLING PURPOSES ONLY
 CAPABILITY STUDY REQUIRED AT PPAP
 CAPABILITY STUDY REQUIRED AT PPAP (ONGOING INSPECTION REQUIRED (SIC) IN CONTROL PLAN)
 CAPABILITY STUDY REQUIRED AT PPAP (LOADING SPEC DATA REQUIRED)
 PLUS DRAFT
 WIPED DRAFT
 DRAFT INCLUDED
 CUSTOMER REQUIRED

DIMENSIONS IN MILLIMETERS UNLESS OTHERWISE SPECIFIED:
 X.X ± 0.3 X.XX ± 0.13
 X.XXX ± 0.10 ANGLES: ± 1.5

