

REV	DESCRIPTION	LOC	D.R.#	DATE	CK.	AP.	DR.
A	PRODUCTION RELEASED		093066	11/6/07			

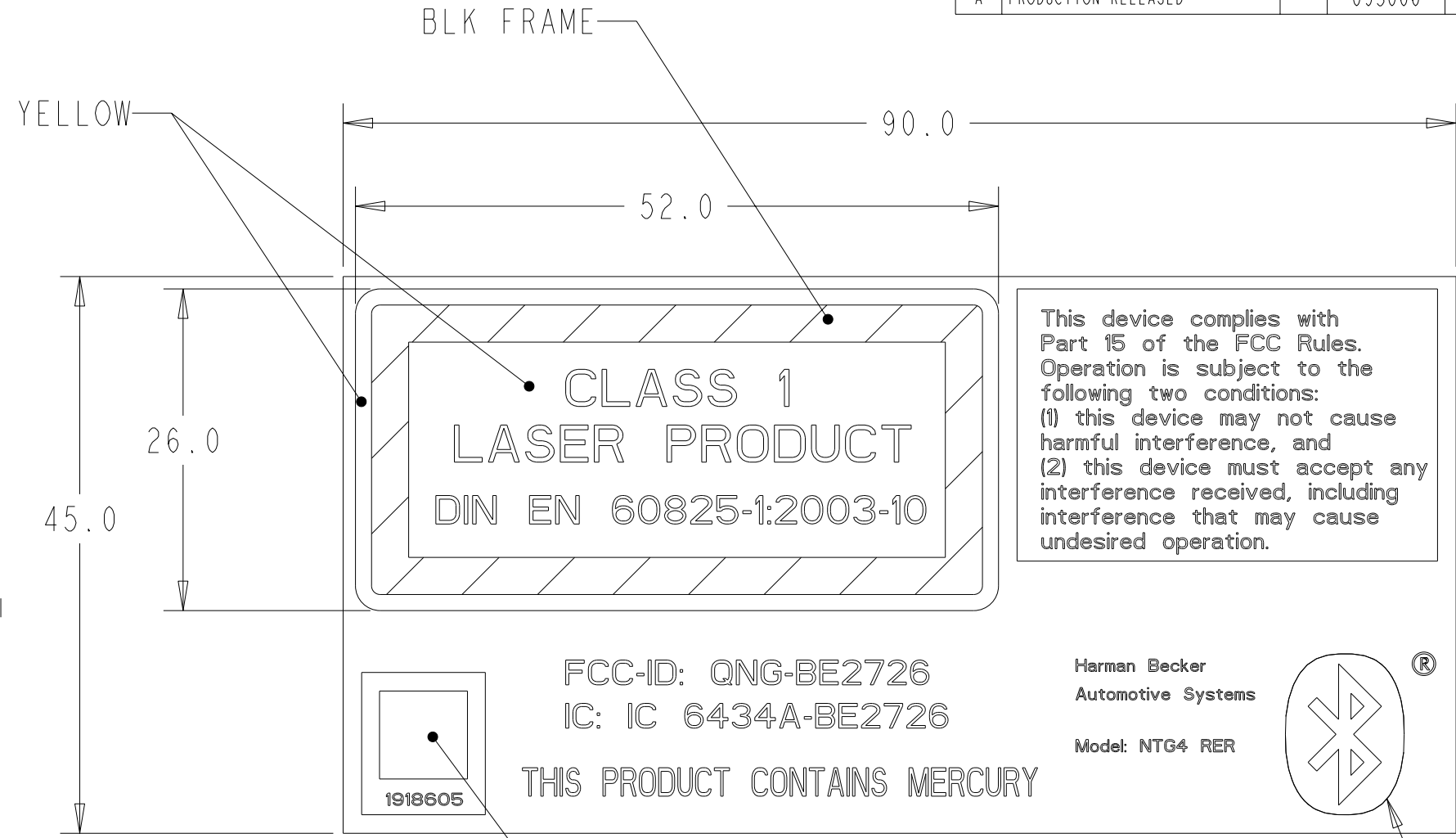
**CLASS 1  
LASER PRODUCT**  
DIN EN 60825-1:2003-10

This device complies with Part 15 of the FCC Rules. Operation is subject to the following two conditions: (1) this device may not cause harmful interference, and (2) this device must accept any interference received, including interference that may cause undesired operation.

FCC-ID: QNG-BE2726  
IC: IC 6434A-BE2726

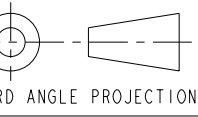
Harman Becker  
Automotive Systems  
Model: NTG4 RER

1918605 THIS PRODUCT CONTAINS MERCURY



This device complies with Part 15 of the FCC Rules. Operation is subject to the following two conditions: (1) this device may not cause harmful interference, and (2) this device must accept any interference received, including interference that may cause undesired operation.

- NOTES
- CLASS 1 LASER PRODUCT TEXT:  
FONT: BLOCK FILLED  
HEIGHT: 3 mm  
TEXT CENTERED WITH IN THE FRAME  
BACKGROUND COLOR:  
WITHIN AND 1 mm OUTSIDE THE FRAME: YELLOW RAL 1021
  - FCC RULES TEXT:  
FONT: DIN 1451  
HEIGHT: 1.3 mm  
COLOR (TEXT AND FRAME): BLACK RAL 9005
  - FCC, IC, AND MERCURY NOTE:  
FONT: HELVETICA REGULAR  
SIZE: 6.5 PT  
COLOR: PANTONE BLACK OR BLACK RAL 9005
  - BLUETOOTH LOGO  
SIZE OR SHAPE & KEEP OUT ZONE: PER BLUETOOTH BRAND BOOK 2007  
AND GRAPHIC .ESP FILES  
COLOR: BLUE PANTONE 286
  - OVERALL BACKGROUND: WHITE
  - HBAS PART NUMBER TO APPEAR IN DATA MATRIX FORMAT WITH HUMAN READABLE FORMAT BELOW.  
BACKGROUND: WHITE  
DATAMATRIX AND TEXT: PANTONE BLACK OR BLACK RAL 9005
  - APPLICABLE CHRYSLER SPECIFICATIONS: PS-4480 AIBDH5-8
  - PPAP APPROVAL REQUIRES SUCCESSFUL MACHINE READ OF THE DATAMATRIX PART NUMBER DEFINITION AND ARTWORK SIGNOFF



PART NO.	SUFFIX	ISSUE	DESCRIPTION
-	-	-	-

SHEET: 1 OF 1 SCALE: 1.000 SHEET SIZE: B FIRST USED: MODEL FILE: 1918605 DRAWING FILE: 1918605 REF DRAWING NO.: 1813366	<ul style="list-style-type: none"> <li> TOOLING PURPOSES ONLY</li> <li> CAPABILITY STUDY REQUIRED AT PPAP</li> <li> CAPABILITY STUDY REQUIRED AT PPAP ONGOING INSPECTION REQUIRED (STATED IN CONTROL PLAN)</li> <li> CAPABILITY STUDY REQUIRED AT PPAP ONGOING SPC DATA REQUIRED PROCESS CAPABILITY INDEX Cpk&gt;1.33 REQUIRED</li> <li> PLUS DRAFT</li> <li> MINUS DRAFT</li> <li> DRAFT INCLUDED</li> <li> CUSTOMER REQUIRED</li> </ul> <p style="font-size: 8px;">DIMENSIONS IN MILLIMETERS UNLESS OTHERWISE SPECIFIED:          X.X = ±0.5    X.XX = ±0.25          X.XXX = ±0.130    ANGLES = ±1.0</p>	<p>UNLESS OTHERWISE SPECIFIED THE FOLLOWING SPECS WILL APPLY:</p> <p>MATERIAL: 0.05 mm OR .002 in POLYESTER BASE L-23 PERMANENT ACRYLIC ADHESIVE</p> <p>FINISH: SUPPLY IN STRIP FORM MARK PART NUMBER IN CARRIER</p>	<p><b>H</b> HARMAN/BECKER AUTOMOTIVE SYSTEMS FARMINGTON HILLS</p> <p style="font-size: 8px;">INFORMATION ON THIS DRAWING IS CONFIDENTIAL AND PROPRIETARY AND MAY NOT BE DISCLOSED TO OTHERS OR REPRODUCED IN ANY WAY WITHOUT THE WRITTEN CONSENT OF HARMAN-BECKER, INC., A DIVISION OF HARMAN INTERNATIONAL.</p> <p>REF. DRAWING STANDARDS: ANSIVASME Y 14.5M</p> <p>NAME: <b>LBL PRINT 45X90 LSR HG FCC BT 6816</b></p> <p>DRAWING NUMBER: <b>1918605</b></p> <p>REV. <b>A</b></p>
---	---	--	---