

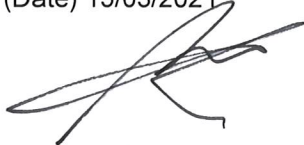
FCC Test Report

Equipment : Telehealth Gateway
Model No : MH100
Applicant : **Seers Technology Co., Ltd.**
#1210, Tech Dong, SKn Technopark 190-1
Sangdaewon-dong, Jungwon-gu Sunghnam-si South
Korea
Date of test : January 19, 2021 to March 15, 2021
FCC Rule Part(s) : FCC Part 15 Subpart C §15.247
Report Type : Original Report

*The product was received on January 19, 2021 and testing was completed on March 15, 2021.
We, BWS TECH Inc. would like to declare that the tested sample has been evaluated in
accordance with the test procedures and has been in compliance with the applicable technical
standards.*

*The test results in this report apply exclusively to the tested model / sample. Without written
approval of BWS TECH Inc. the test report shall not be reproduced except in full.*

(Date) 15/03/2021



Tested by **Seung-Min, Mun**

(Date) 15/03/2021



Reviewed by **Yong-Ki Cho**

BWS TECH INC.

#23, Gokhyeon-ro 480beon-gil, Mohyeon-eup, Cheoin-gu, Yongin-si,
Gyeonggi-do 17031, Republic of Korea
TEL: +82-31-333-5997, FAX: +82-31-333-0017
<http://www.bws.co.kr>

*This test report is not related to KS Q ISO/IEC 17025 and KOLAS accreditation.

*The authenticity of this test report can be confirmed in the Android app "DOCUQR" or www.docuqr.com

Report Revision

TEST REPORT NO.	DATE	DESCRIPTION
BWS-21-RF-0002	March 15, 2021	- First Approval Report

TABLE OF CONTENTS

1. General Information	4
1.1 Applicant	4
1.2 Manufacturer	4
1.3 EUT Description	4
1.4 Other Information	4
2. Description of Test Facility	5
3. Test Methodology	6
3.1 EUT Configuration	6
3.2 EUT Exercise	6
3.3 FCC Part 15.205 Restricted Bands of Operations	6
3.4 Description of Test Modes	7
4. Summary of Test Result	8
5. Test Equipment	9
6. Test Data	10
6.1 AC Power Line Conducted Emission	10
6.2 Number of Channel Measurement.....	13
6.3 Hopping Channel Separation Measurement	16
6.4 Dwell Time Measurement.....	21
6.5 20dB Bandwidth.....	24
6.6 Peak Output Power Measurement.....	29
6.7 Conducted Spurious Emission.....	37
6.8 Band Edges Measurement	42
6.9 Radiated Spurious Emission	48
6.10 Antenna Application	57

1. General Information

Scope – Measurement and determination of electromagnetic emission(EME) of radio frequency devices including intentional radiators and/or unintentional radiators for compliance with the technical rules and regulations of the U.S Federal Communications Commission(FCC)

1.1 Applicant

● Company Name	: Seers Technology Co., Ltd.
● Company Address	: #1210, Tech Dong, SKn Technopark 190-1 Sangdaewon-dong, Jungwon-gu Sunghnam-si South Korea
● Phone/Fax	: Tel No. : +82-31-8023-9811 Fax No. : +82-31-8023-9812

1.2 Manufacturer

● Company Name	: Seers Technology Co., Ltd.
● Company Address	: #1210, Tech Dong, SKn Technopark 190-1 Sangdaewon-dong, Jungwon-gu Sunghnam-si South Korea
● Phone/Fax	: Tel No. : +82-31-8023-9811 Fax No. : +82-31-8023-9812

1.3 EUT Description

● Equipment	: Telehealth Gateway
● Model(s)	: MH100
● Operation Frequency	: 2402 MHz ~ 2480 MHz (Bluetooth)
● Number of Channels	: 79
● Modulation Method	: BDR(GFSK), EDR($\pi/4$ -DQPSK), EDR(8DPSK)
● Power Tolerance	: +/- 2dB
● Input Voltage	: DC 12 V
● Antenna Peak Gain	: 1.99 dBi

1.4 Other Information

● FCC Rule Part(s)	: Part 15 Subpart C §15.247
● FCC ID	: QN8-MH100
● Test Procedure	: ANSI C63.10-2013, DA 00-705
● Date of Test	: January 19, 2021 to March 15, 2021
● Place of Test	: BWS TECH Inc. (FCC Registration Number : 287786) #23, Gokhyeon-ro 480 Beon-gil, Mohyeon-eup, Cheoin-gu, Yongin-si, Gyeonggi-do 17031, South Korea TEL: +82 31 333 5997 FAX: +82 31 333 0017

2. Description of Test Facility

Site Description

Test Lab.	:	 NRRA Designation Number is KR0017.
		 The Certificate Designation Number is KR0017.
		 The Certificate Accreditation Number is KT174.
Name of Firm	:	BWS TECH Inc.
Site Location	:	#23, Gokhyeon-ro 480 Beon-gil, Mohyeon-eup, Cheoin-gu, Yongin-si, Gyeonggi-do 17031, South Korea

3. Test Methodology

The tests documented in this report were performed in accordance with ANSI C63.10: 2013 and the requirements of FCC Rules Part 15.207, 15.209 and 15.247.
Radio testing was performed according to DA 00-705.

3.1 EUT Configuration

The EUT configuration for testing is installed on RF field strength measurement to meet the Commissions requirement and is operated in a manner that intends to maximize its emission characteristics in a continuous normal application.

3.2 EUT Exercise

The EUT was operated in the engineering mode to fix the TX frequency that was for the purpose of the measurements. According to its specifications, the EUT must comply with the requirements of the Section 15.207, 15.209 and 15.247 under the FCC Rules Part 15 Subpart C.

3.3 FCC Part 15.205 Restricted Bands of Operations

(a) Except as shown in paragraph (d) of this section, only spurious emissions are permitted in any of the frequency bands listed below:

MHz	MHz	MHz	GHz
0.090-0.110	16.42-16.423	399.9-410	4.5-5.15
10.495-0.505	16.69475-16.69525	608-614	5.35-5.46
2.1735-2.1905	16.80425-16.80475	960-1240	7.25-7.75
4.125-4.128	25.5-25.67	1300-1427	8.025-8.5
4.17725-4.17775	37.5-38.25	1435-1626.5	9.0-9.2
4.20725-4.20775	73-74.6	1645.5-1646.5	9.3-9.5
6.215-6.218	74.8-75.2	1660-1710	10.6-12.7
6.26775-6.26825	108-121.94	1718.8-1722.2	13.25-13.4
6.31175-6.31225	123-138	2200-2300	14.47-14.5
8.291-8.294	149.9-150.05	2310-2390	15.35-16.2
8.362-8.366	156.52475-156.52525	2483.5-2500	17.7-21.4
38675	156.7-156.9	2690-2900	22.01-23.12
8.41425-8.41475	162.0125-167.17	3260-3267	23.6-24.0
12.29-12.293	167.72-173.2	3332-3339	31.2-31.8
12.51975-12.52025	240-285	3345.8-3358	36.43-36.5
12.57675-12.57725	322-335.4	3600-4400	(²)
13.36-13.41			

1 Until February 1, 1999, this restricted band shall be 0.490-0.510 MHz.

2 Above 38.6

(b) Except as provided in paragraphs (d) and (e) of this section, the field strength of emissions appearing within these frequency bands shall not exceed the limits shown in §15.209. At frequencies equal to or less than 1000 MHz, compliance with the limits in §15.209 shall be demonstrated using measurement instrumentation employing a CISPR quasi-peak detector. Above 1000 MHz, compliance with the emission limits in §15.209 shall be demonstrated based on the average value of the measured emissions. The provisions in §15.35 apply to these measurements.

3.4 Description of Test Modes

The EUT has been tested under operating condition.

After verification, all tests were carried out with the worst case test modes as shown below, and these were chosen for full testing.

Summary table of Test Cases			
Test Item	Data Rate (Modulation)		
	Bluetooth BDR 1Mbps (GFSK)	Bluetooth EDR 2Mbps (π /4-DQPSK)	Bluetooth EDR 3Mbps (8-DPSK)
Output Power	CH00_2402 MHz CH39_2441 MHz CH78_2480 MHz	CH00_2402 MHz CH39_2441 MHz CH78_2480 MHz	CH00_2402 MHz CH39_2441 MHz CH78_2480 MHz
Conducted Test Case	Data Rate (Modulation)		
	Bluetooth BDR 1Mbps (GFSK)	Bluetooth EDR 3Mbps (8-DPSK)	
	CH00_2402 MHz CH39_2441 MHz CH78_2480 MHz	CH00_2402 MHz CH39_2441 MHz CH78_2480 MHz	
Radiated Test Case	Data Rate (Modulation)		
	Bluetooth BDR 1Mbps (GFSK)	Bluetooth EDR 3Mbps (8-DPSK)	
	CH00_2402 MHz CH39_2441 MHz CH78_2480 MHz	CH00_2402 MHz CH39_2441 MHz CH78_2480 MHz	

4. Summary of Test Result

Clause	TEST Description	Standard Section	Requirements	Result
6.1	AC Power Line Conducted Emission	§15.207	§15.207(a)	Pass
6.2	Number of Channel Measurement	§15.247(a)(1)	≥ 15 Channel Number	Pass
6.3	Hopping Channel Separation Measurement	§15.247(a)(1)	≥ 2/3 of 20 dB Bandwidth	Pass
6.4	Dwell Time Measurement	§15.247(a)(1)	≤ 0.4 s	Pass
6.5	20dB Bandwidth	§15.247(a)(1)	N/A	Pass
6.6	Peak Output Power Measurement	§15.247(b)(1)	≤ 125mW	Pass
6.7	Conducted Spurious Emission	§15.247(d)	≥20dBc/100kHz	Pass
6.8	Band Edges Measurement	§15.247(d)	§15.205(a), §15.209(a)	Pass
6.9	Radiated Spurious Emission	§15.247(d), §15.209(a), §15.35(b)	§15.209, §15.247(d)	Pass
6.10	Antenna Application	§15.247(b), §15.203	§15.247(b), §15.203	Pass

5. Test Equipment

Equipment	Model	Manufacturer	Serial number	Calibration Due date (year/month/date)
PROGRAMMABLE TEMP. & HUMID. CHAMBER	TH-KE-065	JEIO TECH	2060604	2021-08-27
USB RF POWER SENSOR	RPR3006W	D.A.R.E!! Instruments	14I000048SNO09	2021-04-06
PROGRAMMABLE DC POWER SUPPLY	UDP-6015R	UNICORN	1301006	2021-08-28
SYNTHESIZED SIGNAL GENERATOR	68367C	ANRITSU	#004908	2021-05-14
Signal Analyzer	FSP	Rohde & Schwarz	100631	2021-12-24
EMC ANALYZER	E7405A	Agilent	MY45104194	2022-01-28
Boresight Antenna mast controller	AM-BS-4500E	AUDIX	060908-BS	N/A
Antenna Turntable Controller	JAC-2	Daeli EMC	N/A	N/A
Loop Antenna	FMZB1519	SCHWARZBECK	00025	2022-01-06
TRILOG Broadband Antenna	VULB 9163	SCHWARZBECK	01063	2022-11-25
Active Horn Antenna	AHA-118	COM-POWER CORP.	701064	2022-11-18
Horn Antenna	AH-1840	COM-POWER	361812	2021-10-21
RF Amplifier	MPA-10-40	RF Bay, Inc.	191246	2021-03-18
Band reject filter	BRM50701	Micro-Tronics	G236	2021-08-28

6. Test Data

6.1 AC Power Line Conducted Emission

6.1.1 Test Limit

For equipment that is designed to be connected to the public utility (AC) power line, the radio frequency voltage that is conducted back onto the AC power line on any frequency or frequencies within the band 150 kHz to 30 MHz shall not exceed the limits in the following table.

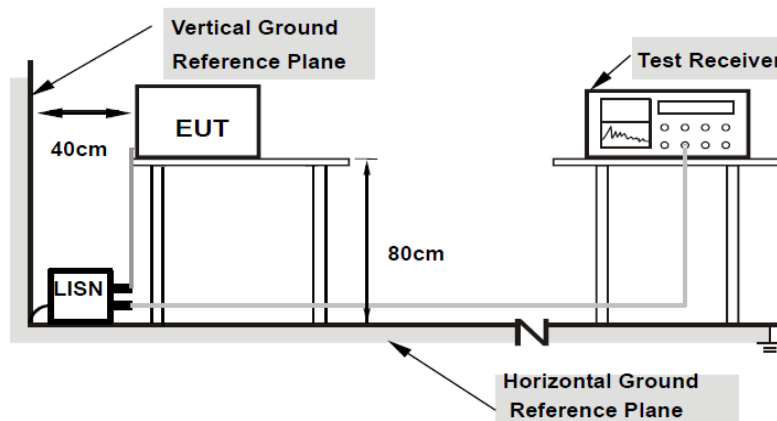
Frequency of emission(MHz)	Conducted limit(dB μ V)	
	Quasi-peak	Average
0.15-0.5	66 to 56*	56 to 46*
0.5-5	56	46
5-30	60	50

*Decreases with the logarithm of the frequency.

6.1.2 Test Procedures

1. The EUT was placed 0.4 meter from the conducting wall of the shielding room and was kept at least 80 centimeters from any other grounded conducting surface.
2. Connect EUT to the power mains through a line impedance stabilization network(LISN).
3. All the support units are connecting to the other LISN.
4. The LISN provides 50 ohm coupling impedance for the measuring instrument.
5. The FCC states that a 50 ohm, 50 μ H LISN should be used.
6. Both sides of AC line were checked for maximum conducted interference.
7. The frequency range from 150 kHz to 30 MHz was searched.
8. Set the test-receiver system to Peak Detect Function and specified bandwidth (IF Bandwidth = 9 kHz) with Maximum Hold Mode. Then measurement is also conducted by Average Detector and Quasi-Peak Detector Function respectively.

6.1.3 Test SET-UP (Block Diagram of Configuration)

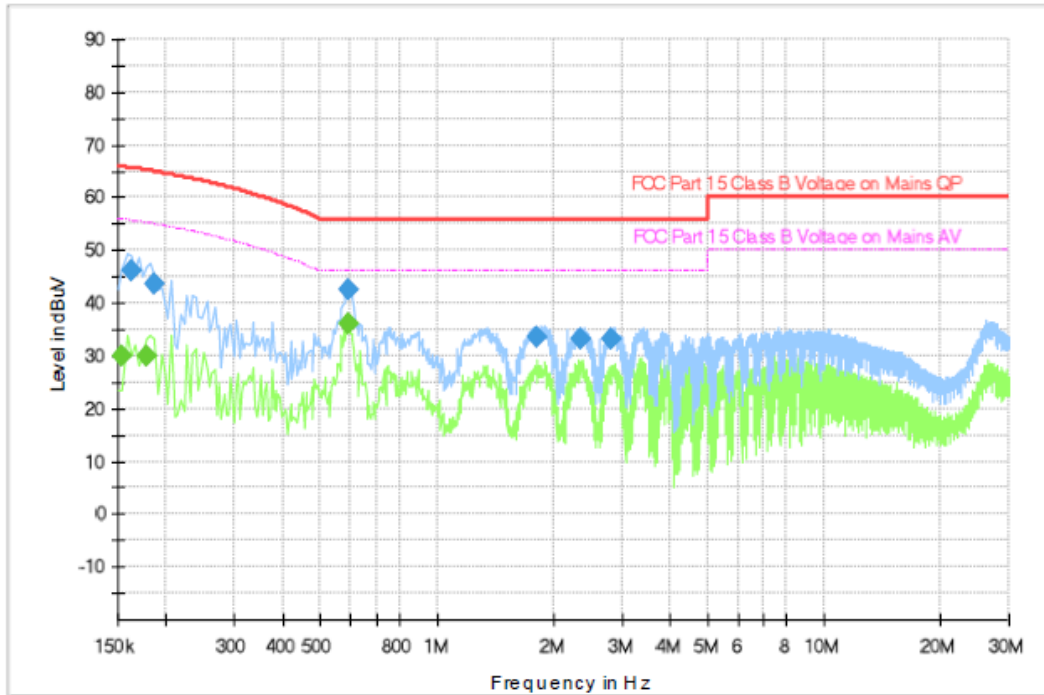


6.1.4 Test Results

Common Information

Test Line:

L1



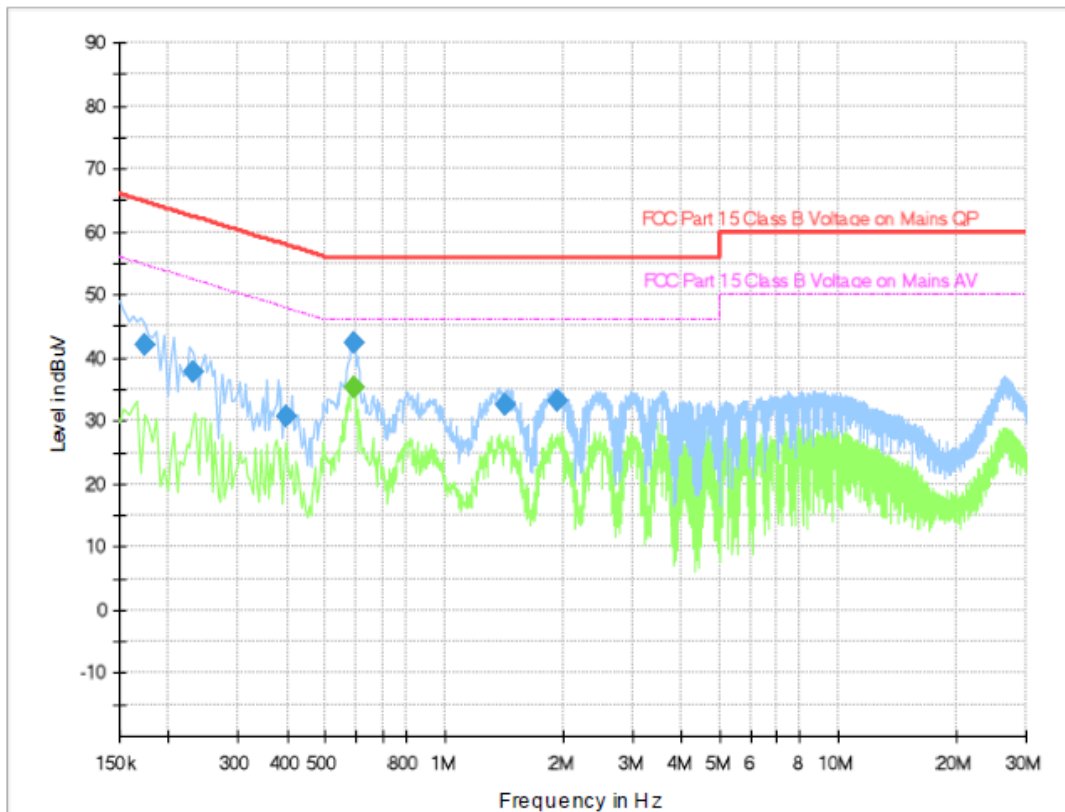
Final Result

Frequency (MHz)	QuasiPeak (dBuV)	Average (dBuV)	Limit (dBuV)	Margin (dB)	Meas. Time (ms)	Bandwidth (kHz)	Line	PE	Corr. (dB)
0.153500	—	30.01	55.90	25.89	3000.0	9.000	L1	GND	7.9
0.162500	46.30	—	65.64	19.34	3000.0	9.000	L1	GND	7.8
0.177450	—	29.97	55.22	25.25	3000.0	9.000	L1	GND	7.7
0.186550	43.51	—	64.96	21.45	3000.0	9.000	L1	GND	7.7
0.591350	42.42	—	56.00	13.58	3000.0	9.000	L1	GND	7.7
0.591450	—	36.07	46.00	9.93	3000.0	9.000	L1	GND	7.7
1.820550	33.46	—	56.00	22.54	3000.0	9.000	L1	GND	7.7
2.361950	33.37	—	56.00	22.63	3000.0	9.000	L1	GND	7.7
2.813850	33.37	—	56.00	22.63	3000.0	9.000	L1	GND	7.8

Common Information

Test Line:

N



Final Result

Frequency (MHz)	QuasiPeak (dBuV)	Average (dBuV)	Limit (dBuV)	Margin (dB)	Meas. Time (ms)	Bandwidth (kHz)	Line	PE	Corr. (dB)
0.174500	41.95	—	64.74	22.79	3000.0	9.000	N	GND	7.7
0.231650	37.69	—	62.39	24.70	3000.0	9.000	N	GND	7.7
0.395650	30.77	—	57.94	27.18	3000.0	9.000	N	GND	7.7
0.587250	—	35.46	46.00	10.54	3000.0	9.000	N	GND	7.7
0.591150	42.37	—	56.00	13.63	3000.0	9.000	N	GND	7.7
1.422050	32.60	—	56.00	23.40	3000.0	9.000	N	GND	7.7
1.942450	33.04	—	56.00	22.96	3000.0	9.000	N	GND	7.7

6.2 Number of Channel Measurement

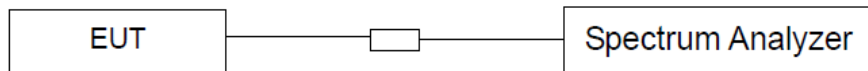
6.2.1 Test Limit

Frequency hopping systems in the 2400-2483.5 MHz band shall use at least 15 channels.

6.2.2 Test Procedures

1. The testing follows FCC Public Notice DA 00-705 Measurement Guidelines.
2. The RF output of EUT was connected to the spectrum analyzer by RF cable and attenuator. The path loss was compensated to the results for each measurement.
3. Set to the maximum power setting and enable the EUT transmit continuously.
4. Enable the EUT hopping function.
5. Use the following spectrum analyzer settings: Span = the frequency band of operation; RBW \geq 1% of the span; VBW \geq RBW; Sweep = auto; Detector function = peak; Trace = max hold.
6. The number of hopping frequency used is defined as the number of total channel.
7. Record the measurement data derived from spectrum analyzer.

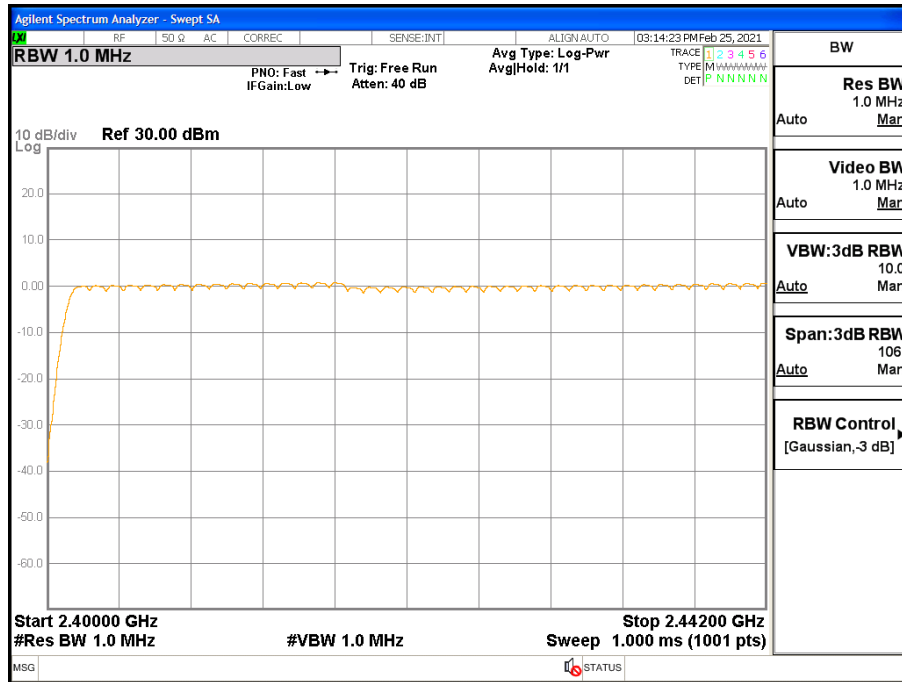
6.2.3 Test SET-UP (Block Diagram of Configuration)



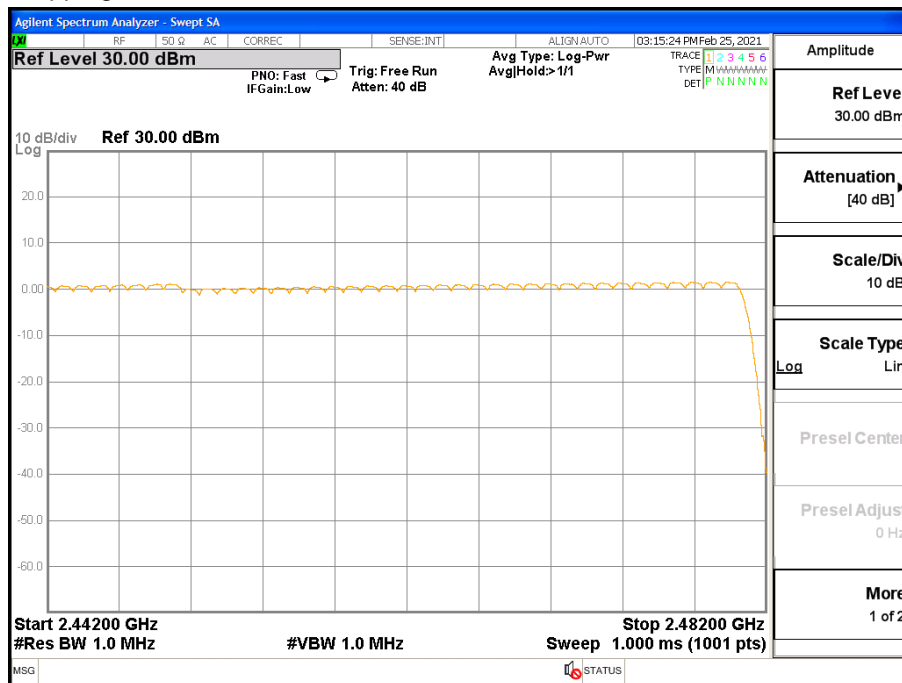
6.2.4 Test Results

Test Mode	Number of Hopping(Channel)	Channel Number	Result
BDR(GFSK)	79	≥ 15	Pass
EDR(8DPSK)	79	≥ 15	Pass

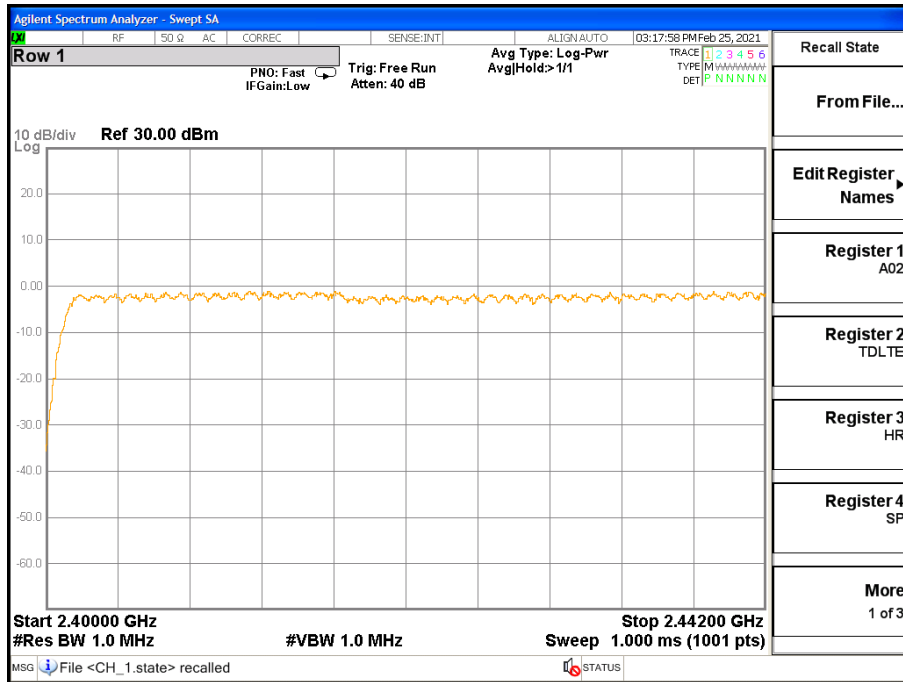
BDR Number of Hopping Channel - 1



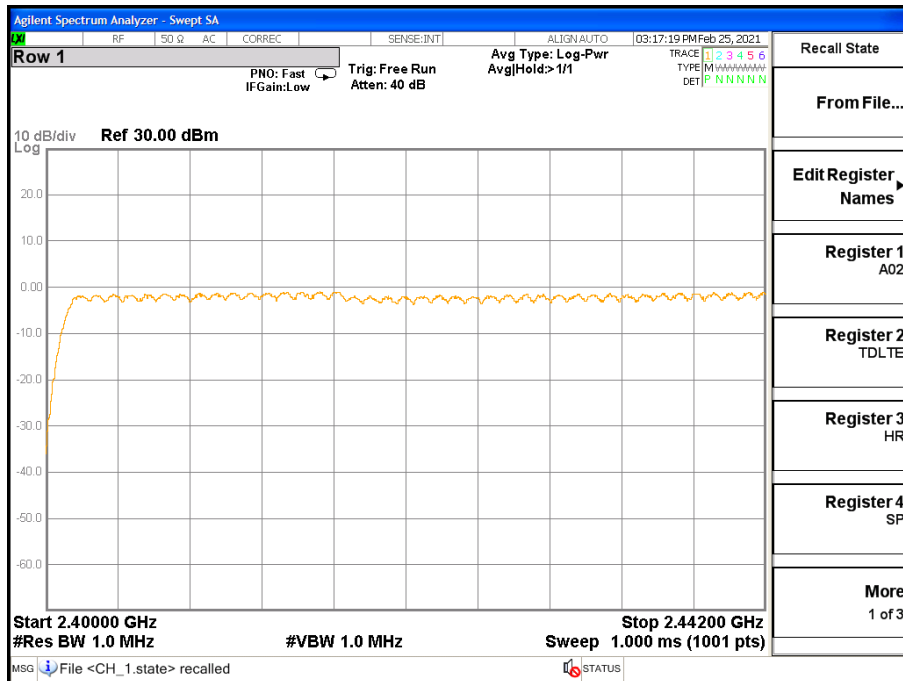
BDR Number of Hopping Channel - 2



EDR Number of Hopping Channel - 1



EDR Number of Hopping Channel - 2



6.3 Hopping Channel Separation Measurement

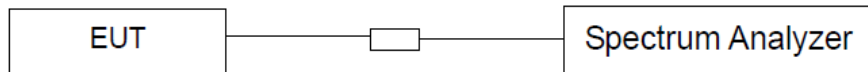
6.3.1 Test Limit

Frequency hopping systems operating in the 2400-2483.5 MHz band may have hopping channel Carrier frequencies that are separated by 25 kHz or two-thirds of the 20 dB bandwidth of the Hopping channel, whichever is greater.

6.3.3 Test Procedure

1. The testing follows FCC Public Notice DA 00-705 Measurement Guidelines.
2. The RF output of EUT was connected to the spectrum analyzer by RF cable and attenuator. The Path loss was compensated to the results for each measurement.
3. Set to the maximum power setting and enable the EUT transmit continuously.
4. Enable the EUT hopping function.
5. Use the following spectrum analyzer settings:
Span = wide enough to capture the peaks of two adjacent channels; RBW \geq 1% of the span;
VBW \geq RBW; Sweep = auto; Detector function = peak; Trace = max hold.
6. Measure and record the results in the test report.

6.3.3 Test SET-UP (Block Diagram of Configuration)

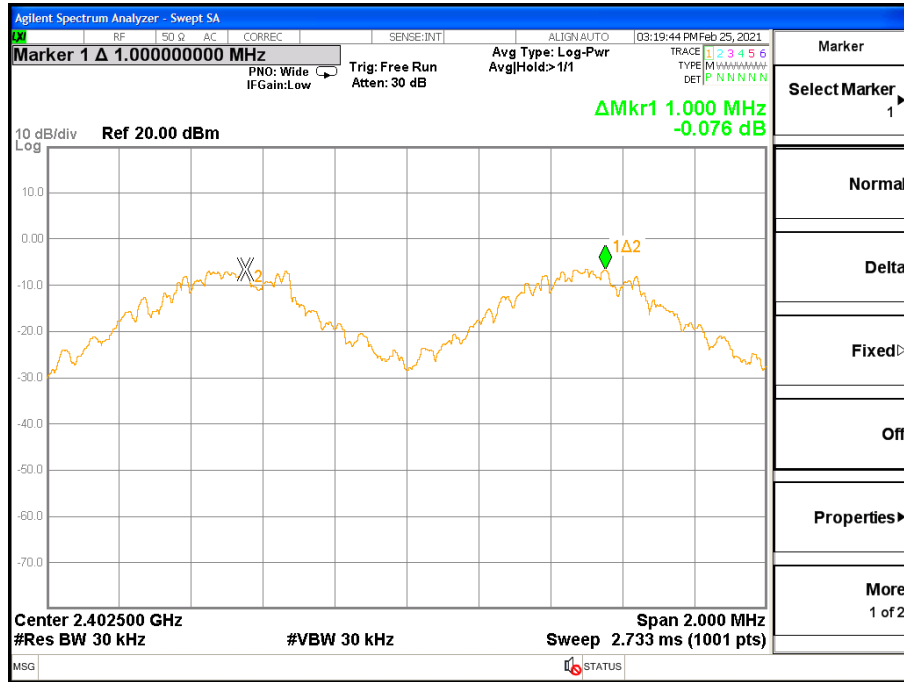


6.3.4 Test Results

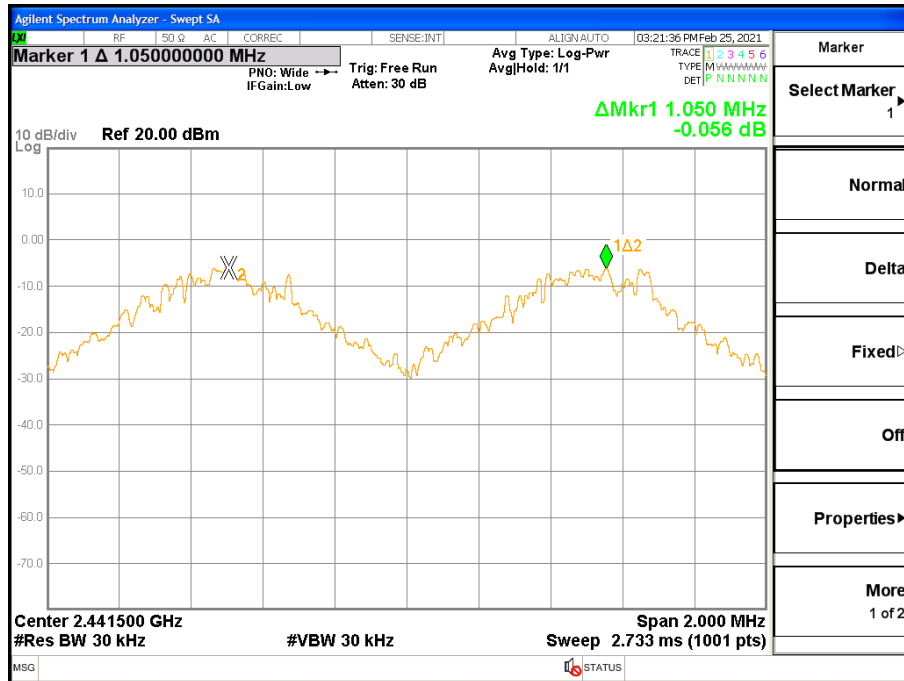
Modulation	Channel	Test Result (kHz)	Limit (kHz) (2/3 of 20dB BW)
BDR(GFSK)	Low	1000	≥ 643
	Middle	1050	≥ 641
	High	1070	≥ 641
EDR(8DPSK)	Low	1150	≥ 861
	Middle	1174	≥ 858
	High	1184	≥ 834

[Hopping Channel Separation]

Test Mode : BDR 2402 MHz



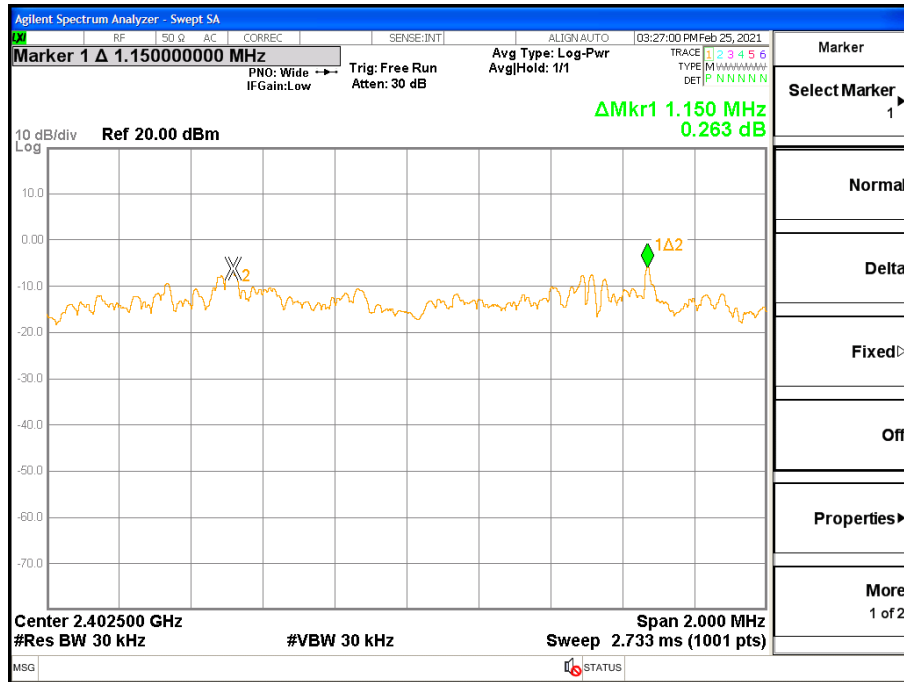
Test Mode : BDR 2441 MHz



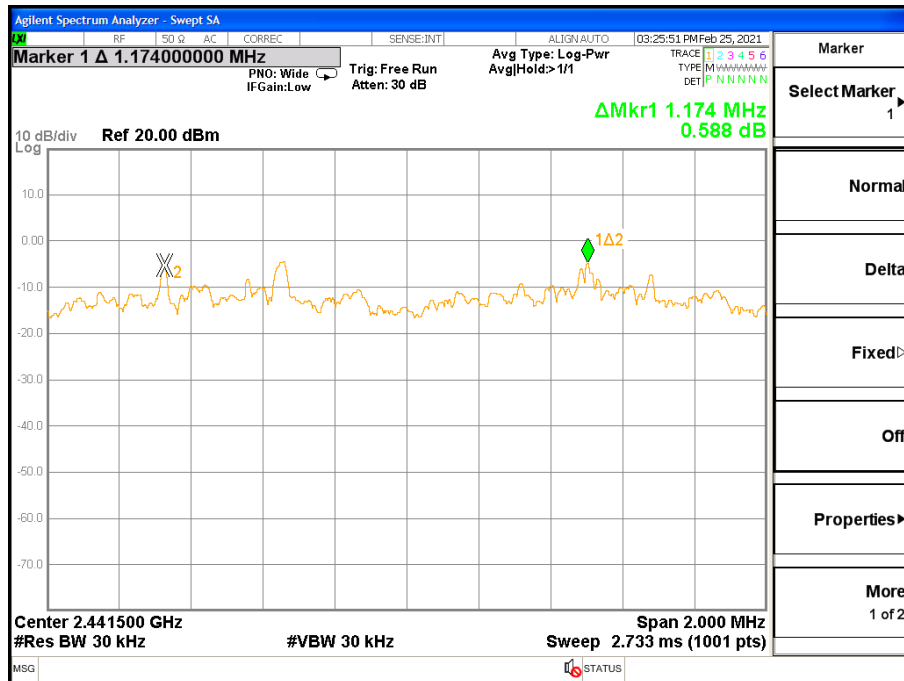
Test Mode : BDR 2480 MHz



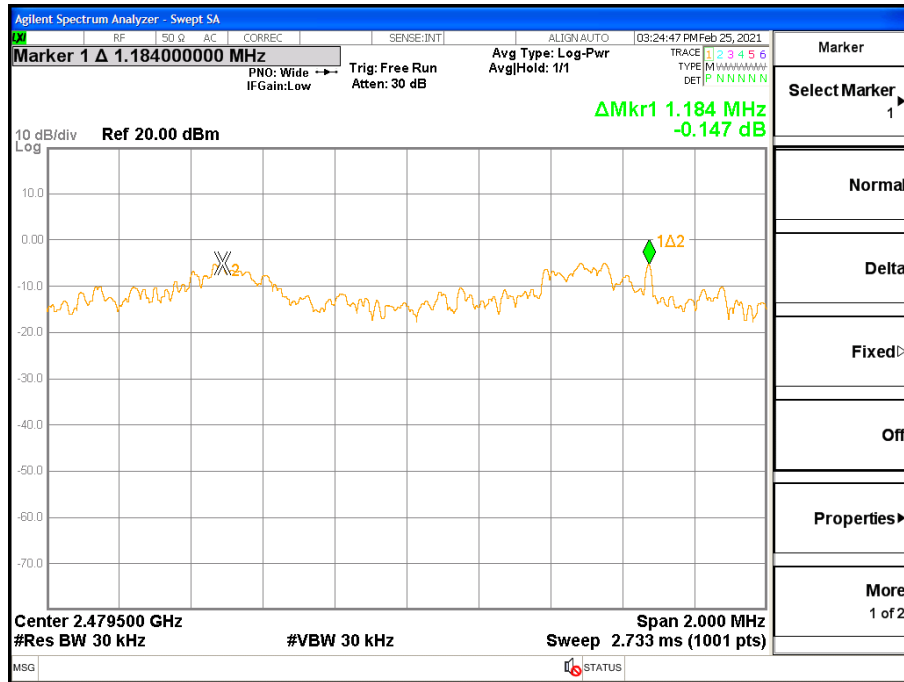
Test Mode : EDR 2402MHz



Test Mode : EDR 2441MHz



Test Mode : EDR 2480MHz



6.4 Dwell Time Measurement

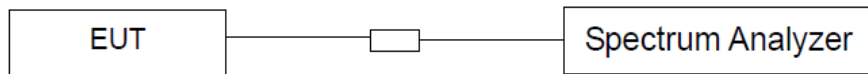
6.4.1 Test Limit

The average time of occupancy on any channel shall not be greater than 0.4 seconds within a period of 0.4 seconds multiplied by the number of hopping channels employed.

6.4.2 Measurement Procedure

1. The testing follows FCC Public Notice DA 00-705 Measurement Guidelines.
2. The RF output of EUT was connected to the spectrum analyzer by RF cable and attenuator. The path loss was compensated to the results for each measurement.
3. Set to the maximum power setting and enable the EUT transmit continuously.
4. Enable the EUT hopping function.
5. Use the following spectrum analyzer settings: Span = zero span, centered on a hopping channel; RBW = 1 MHz; VBW \geq RBW; Sweep = as necessary to capture the entire dwell time per hopping channel; Detector function = peak; Trace = max hold.
6. Measure and record the results in the test report.

6.4.3 Test SET-UP (Block Diagram of Configuration)

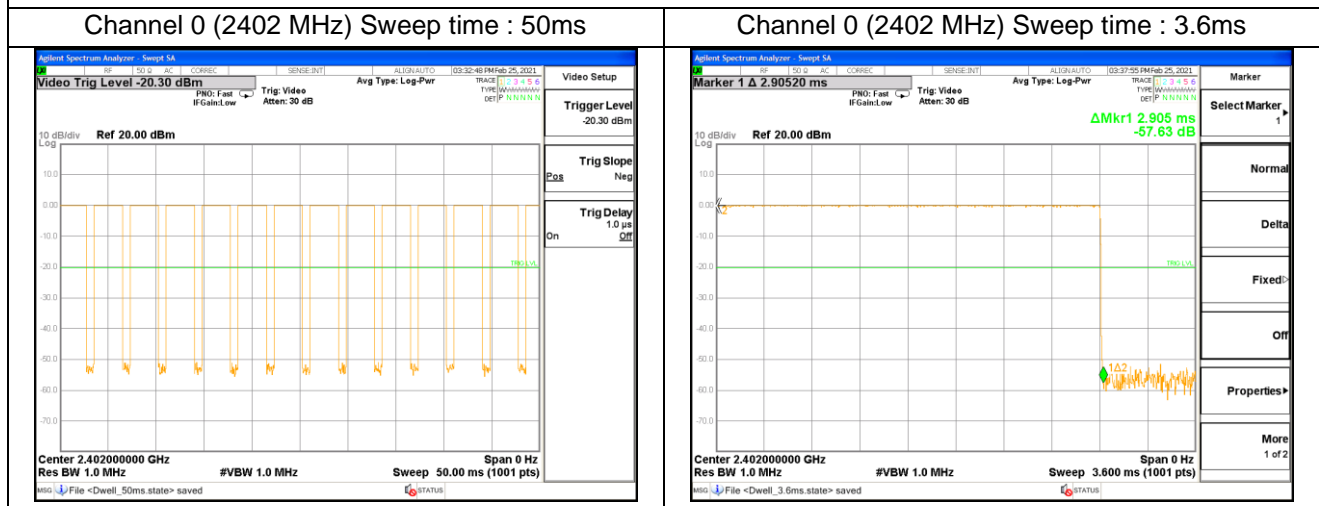


6.4.4 Test Results

Test Mode	Channel No.	Frequency (MHz)	Time Slot Length (ms)	Dwell Time (ms)	Limit (ms)	Result
BDR(GFSK)	0	2402	2.905	325.36	<400	Pass
EDR($\pi/4$ -DQPSK)	0	2402	2.916	326.59	<400	Pass
EDR(8DPSK)	0	2402	2.916	326.59	<400	Pass

Test mode : BDR

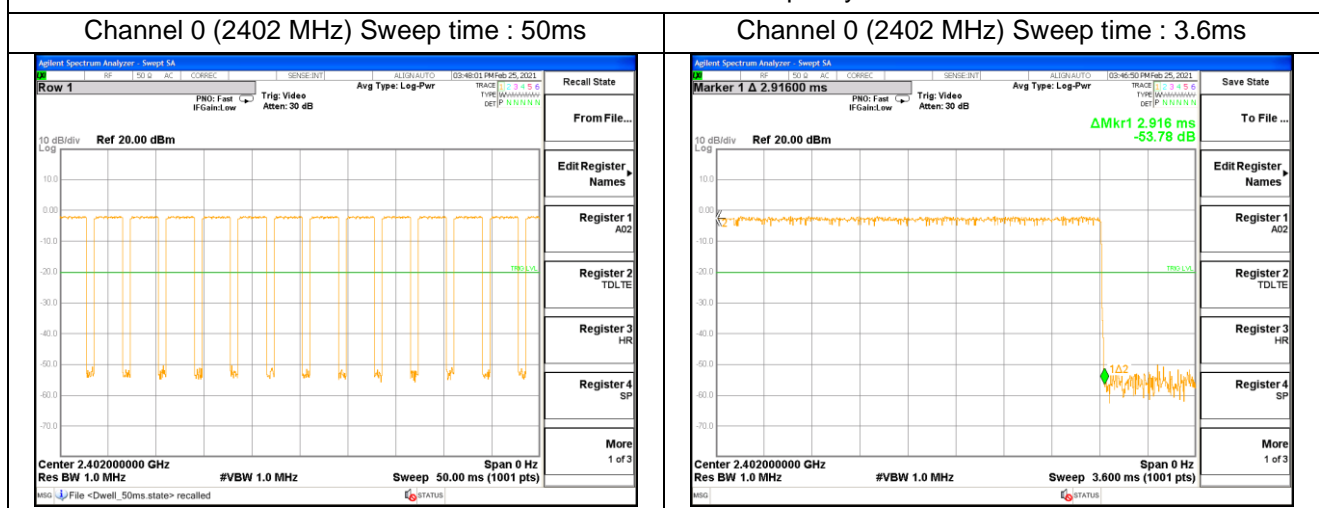
GFSK Time of Occupancy



Note : Test Time Period: $0.4 * 79 = 31.6\text{sec}$, Hopping Time with 1sec : $14/50\text{ms} = 280\text{ hops/sec}$.
The Maximum Occupancy Time within 31.6sec : $[(2.905\text{ms} * 280) / 79] * 31.6 = 325.36\text{ msec}$.

Test mode : EDR

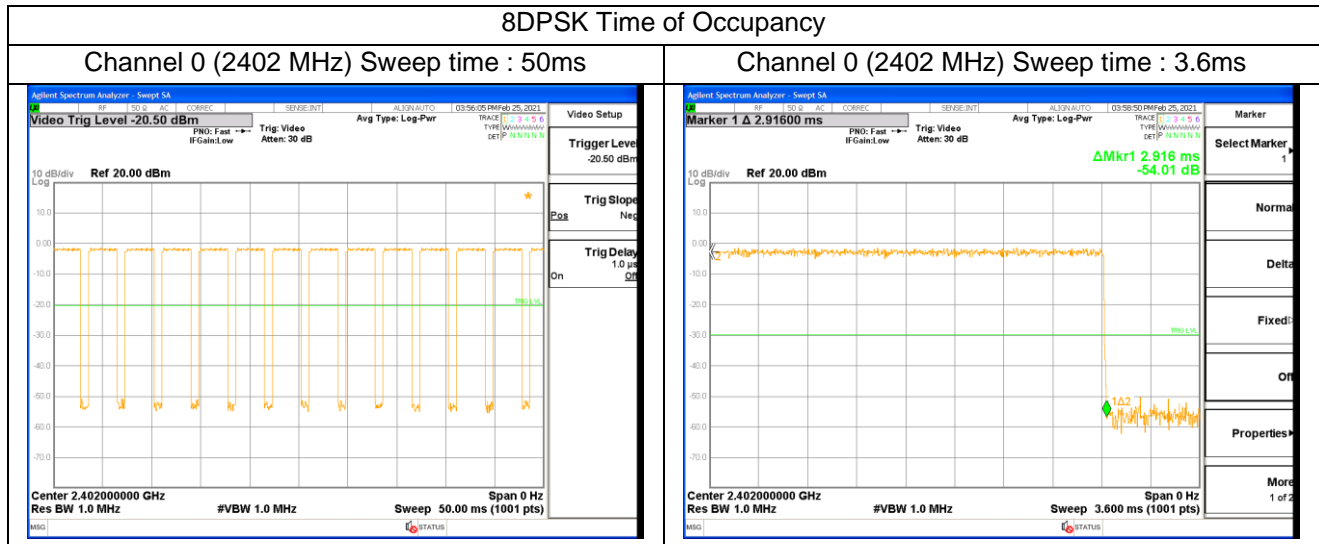
$\pi/4$ -DQPSK Time of Occupancy



Note : Test Time Period: $0.4 * 79 = 31.6\text{sec}$, Hopping Time with 1sec : $14/50\text{ms} = 280\text{ hops/sec}$.
The Maximum Occupancy Time within 31.6sec : $[(2.916\text{ms} * 280) / 79] * 31.6 = 326.59\text{ msec}$.

Test mode : EDR

8DPSK Time of Occupancy



Note : Test Time Period: $0.4 * 79 = 31.6\text{sec}$, Hopping Time with 1sec : $14/50\text{ms} = 280\text{ hops/sec}$.
The Maximum Occupancy Time within 31.6sec : $[(2.916\text{ms} * 280) / 79] * 31.6 = 326.59\text{ msec}$.

6.5 20dB Bandwidth

6.5.1 Test Limit

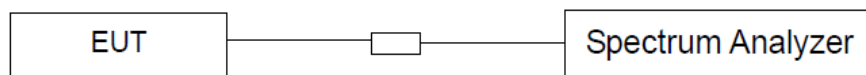
Reporting only

6.5.2 Test Procedure

1. The testing follows FCC Public Notice DA 00-705 Measurement Guidelines.
2. The RF output of EUT was connected to the spectrum analyzer by RF cable and attenuator. The path loss was compensated to the results for each measurement.
3. Set to the maximum power setting and enable the EUT transmit continuously.
4. Use the following spectrum analyzer settings for 20dB Bandwidth measurement.
Span = approximately 2 to 3 times the 20 dB bandwidth, centered on a hopping channel;
RBW \geq 1% of the 20 dB bandwidth; VBW \geq RBW; Sweep = auto; Detector function = peak;
Trace = max hold.
5. Use the following spectrum analyzer settings for 99 % Bandwidth measurement.
For 99% Bandwidth measurement, the RBW=30kHz, and VBW = 100kHz. Sweep = auto ;
Detector function = sample. Trace = max hold.
6. Measure and record the results in the test report.

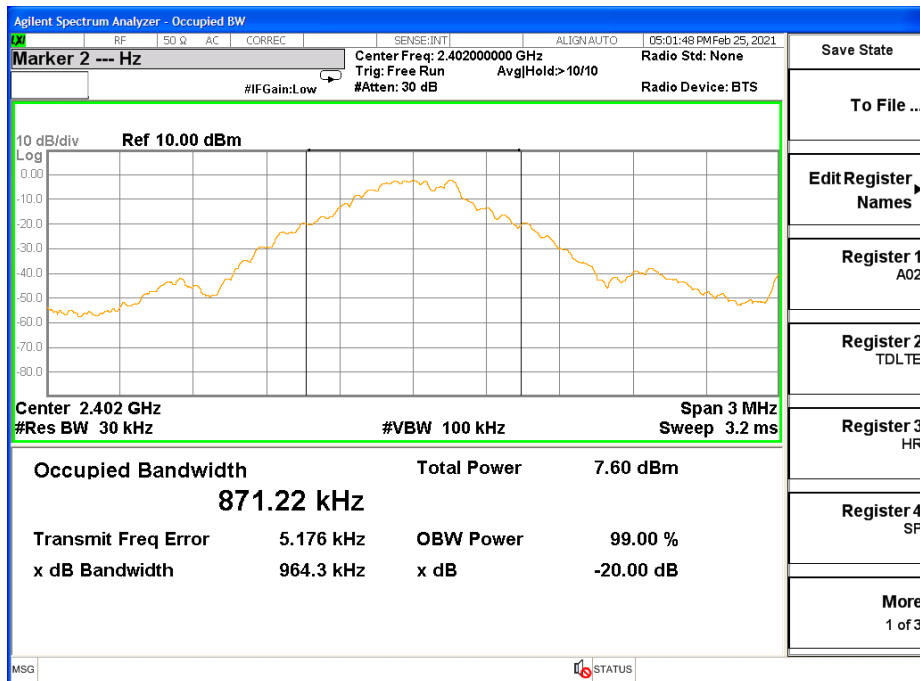
6.5.3 Test SET-UP (Block Diagram of Configuration)

Conducted Emission Test Set-Up, Frequency above 1000MHz

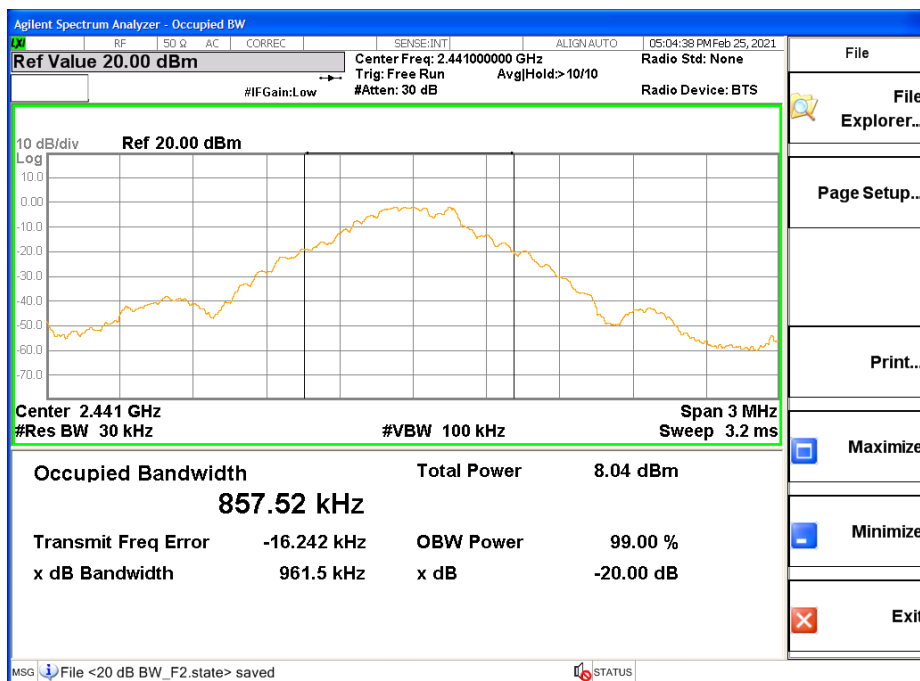


6.5.4 Test Result

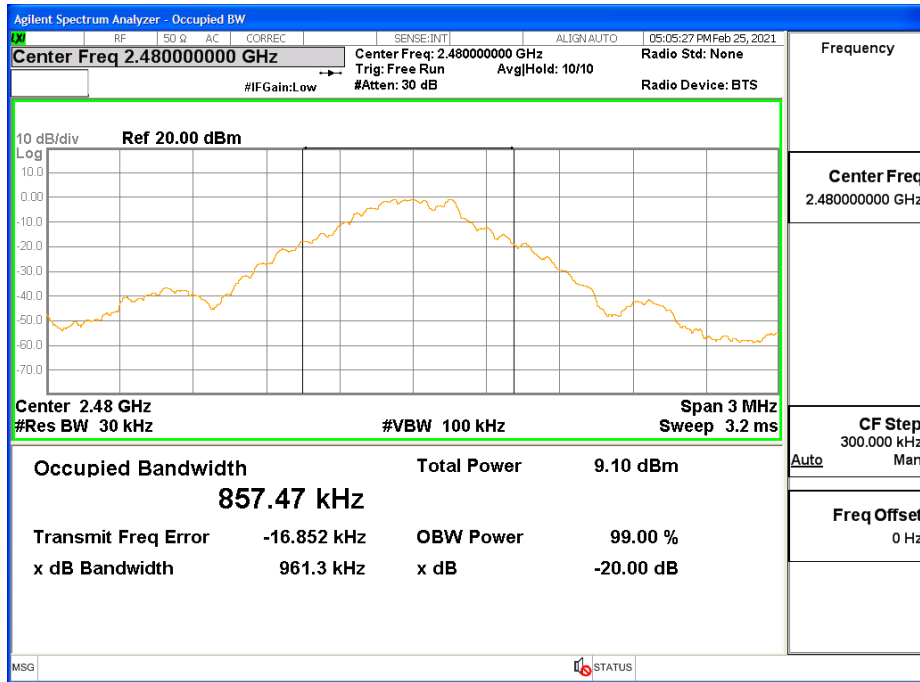
Test Mode : BDR 2402 MHz



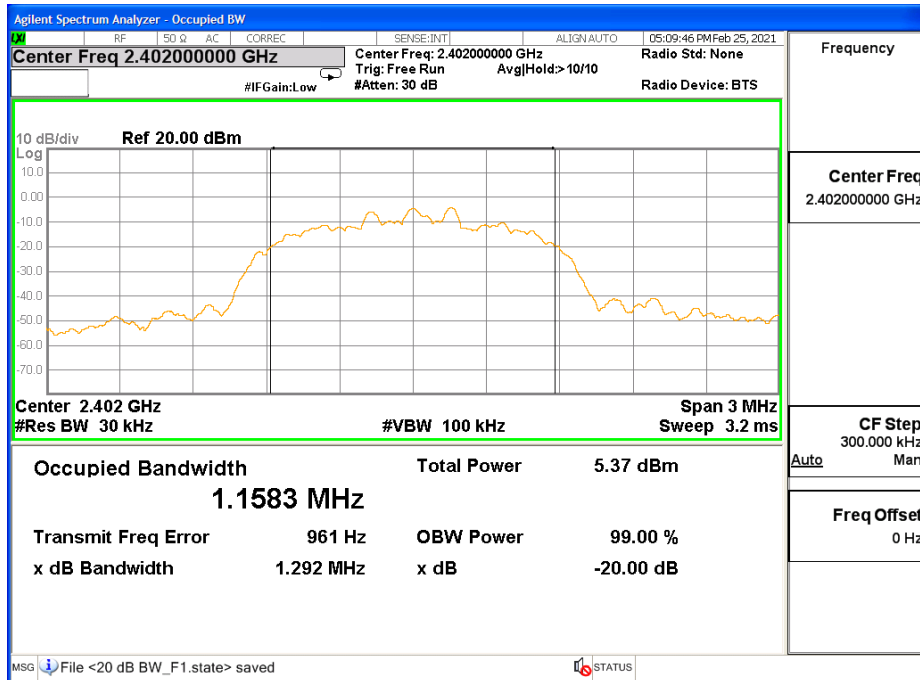
Test Mode : BDR 2441 MHz



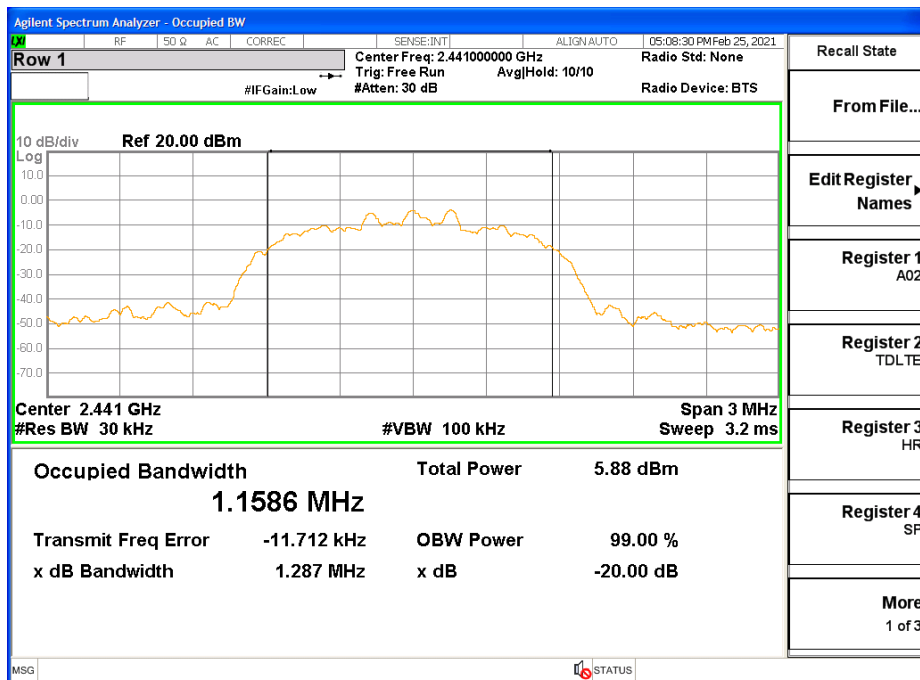
Test Mode : BDR 2480 MHz



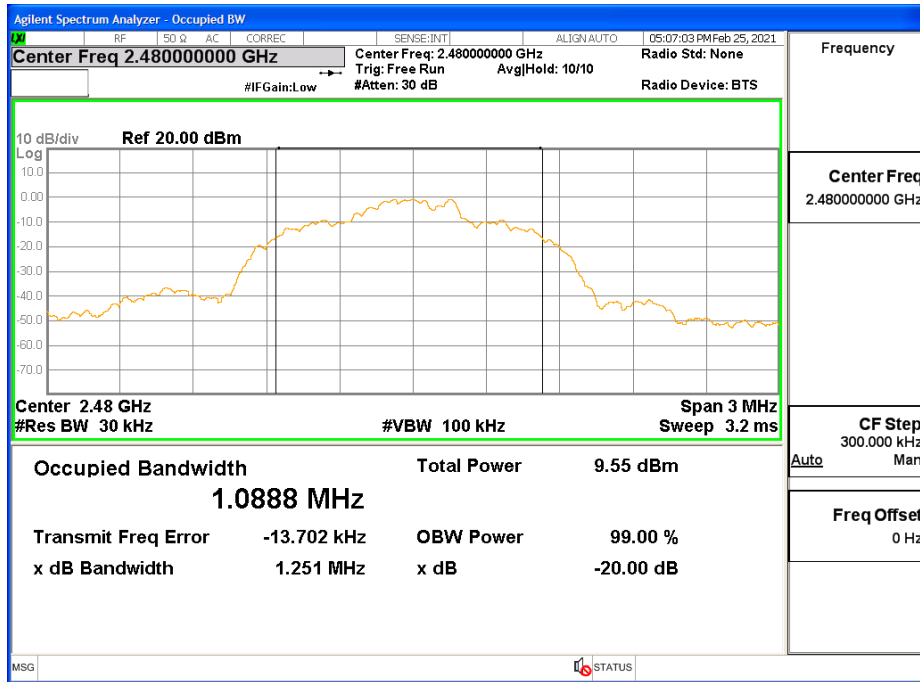
Test Mode : EDR 2402MHz



Test Mode : EDR 2441MHz



Test Mode : EDR 2480MHz



6.6 Peak Output Power Measurement

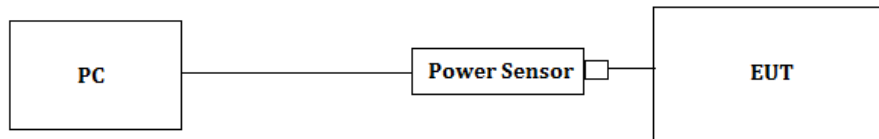
6.6.1 Test Limit

The maximum peak conducted output power of the intentional radiator shall not exceed the following:
(1) For frequency hopping systems operating in the 2400-2483.5 MHz band employing at least 75 non-overlapping hopping channels, and all frequency hopping systems in the 5725-5850 MHz band: 1 watt. For all other frequency hopping systems in the 2400-2483.5 MHz band 0.125 watts.

6.6.2 Test Procedure

1. The testing follows FCC Public Notice DA 00-705 Measurement Guidelines.
2. The RF output of EUT was connected to the power meter by RF cable and attenuator. The path loss was compensated to the results for each measurement.
3. Set to the maximum power setting and enable the EUT transmit continuously.
4. Measure the conducted output power with cable loss and record the results in the test report.
5. Measure and record the results in the test report.

6.6.3 Test SET-UP (Block Diagram of Configuration)



6.6.4 Test Result

[Duty Cycle]

Test Mode	Channel	Frequency (MHz)	Duty Cycle	Duty Cycle Factor (dB)
BDR(GFSK)	0	2402	0.779	1.1
	39	2441	0.777	1.1
	78	2480	0.778	1.1
EDR($\pi/4$ -DQPSK)	0	2402	0.776	1.1
	39	2441	0.777	1.1
	78	2480	0.774	1.1
EDR(8DPSK)	0	2402	0.783	1.1
	39	2441	0.776	1.1
	78	2480	0.775	1.1

Notes : 1. Duty Cycle = T_{on} / T_{total}

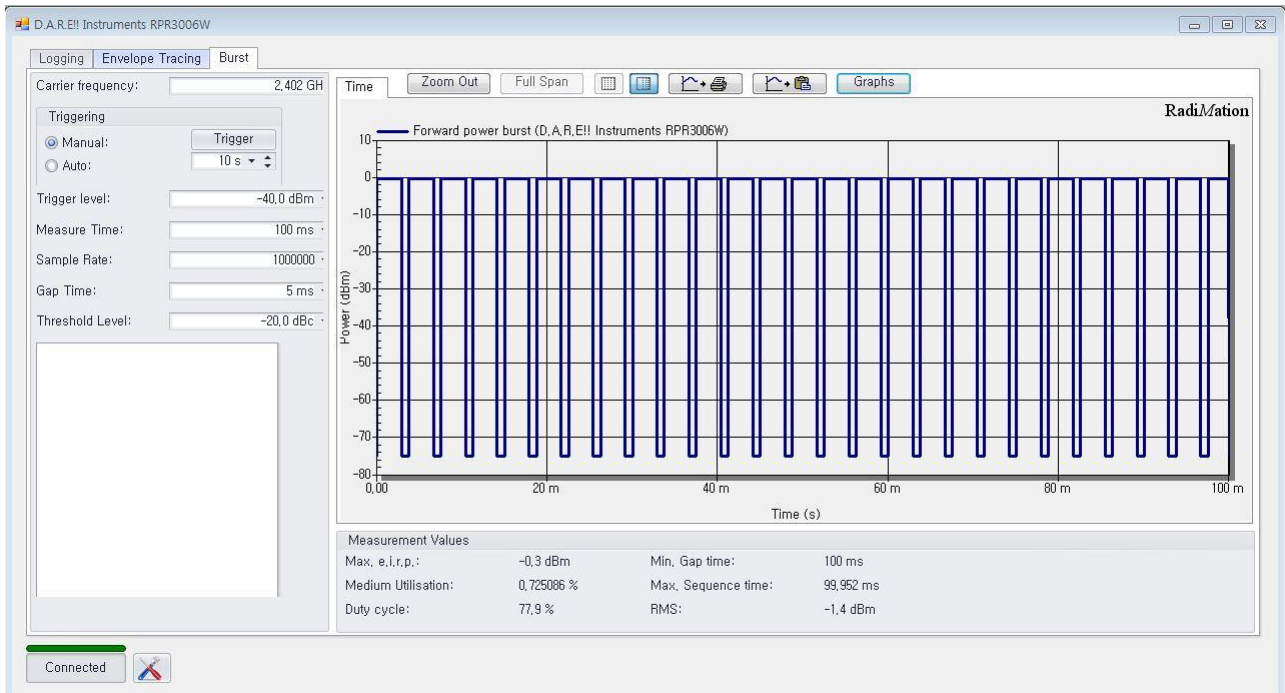
2. Duty Cycle Factor = $10 \cdot \log(1/\text{Duty Cycle})$.

[Peak Output Power Measurement]

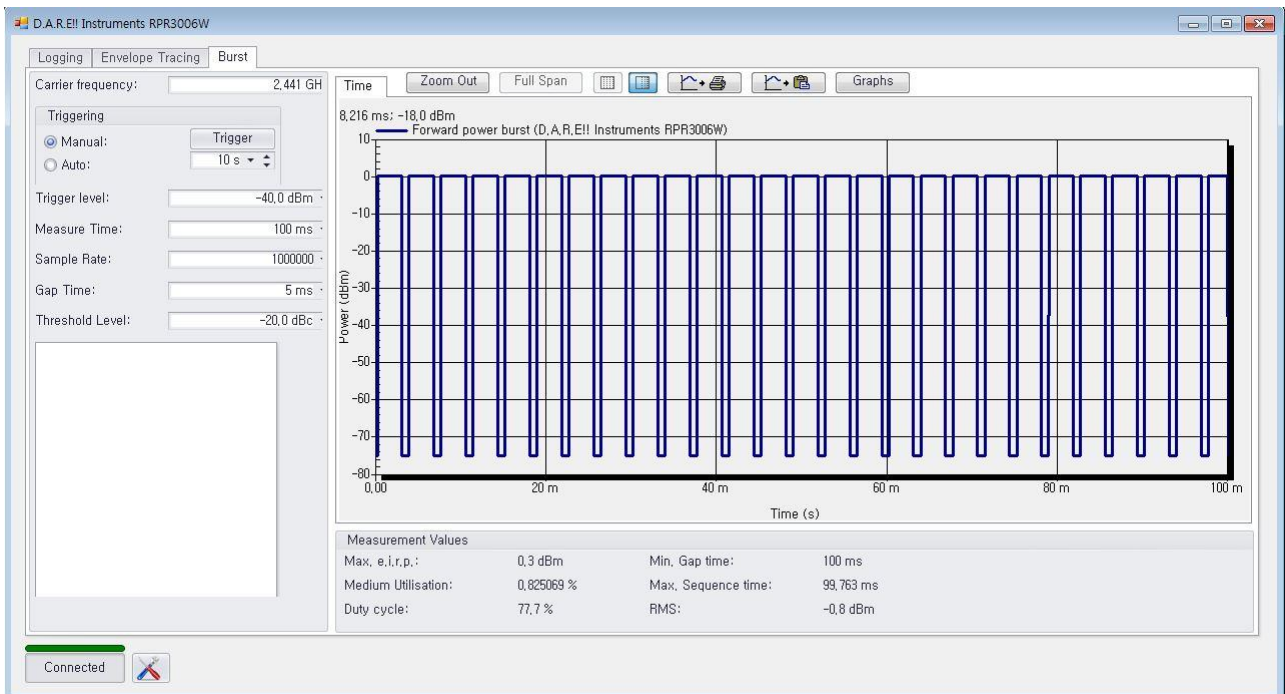
Test Mode	Channel	Frequency (MHz)	Peak Output Power (dBm)	Antenna Gain (dBi)	Peak Output Power (EIRP) (dBm)	Duty Cycle Factor + Peak Output Power (EIRP) (dBm)	Max. Limit (dBm)	Result
BDR(GFSK)	0	2402	-0.3	1.96	1.66	2.74	≤ 20.97	Pass
	39	2441	0.3	1.74	2.04	3.14	≤ 20.97	Pass
	78	2480	0.9	0.86	1.76	2.85	≤ 20.97	Pass
EDR (π/4-DQPSK)	0	2402	-3.5	1.96	-1.54	-0.44	≤ 20.97	Pass
	39	2441	-2.8	1.74	-1.06	0.04	≤ 20.97	Pass
	78	2480	-2.3	0.86	-1.44	-0.33	≤ 20.97	Pass
EDR (8DPSK)	0	2402	-3.5	1.96	-1.54	-0.48	≤ 20.97	Pass
	39	2441	-2.9	1.74	-1.16	-0.06	≤ 20.97	Pass
	78	2480	-2.3	0.86	-1.44	-0.33	≤ 20.97	Pass

Note: Limit(dBm) is the value of Limit(mW) to be conversion as follows: $10\log_{10}125 = 20.97\text{dBm}$

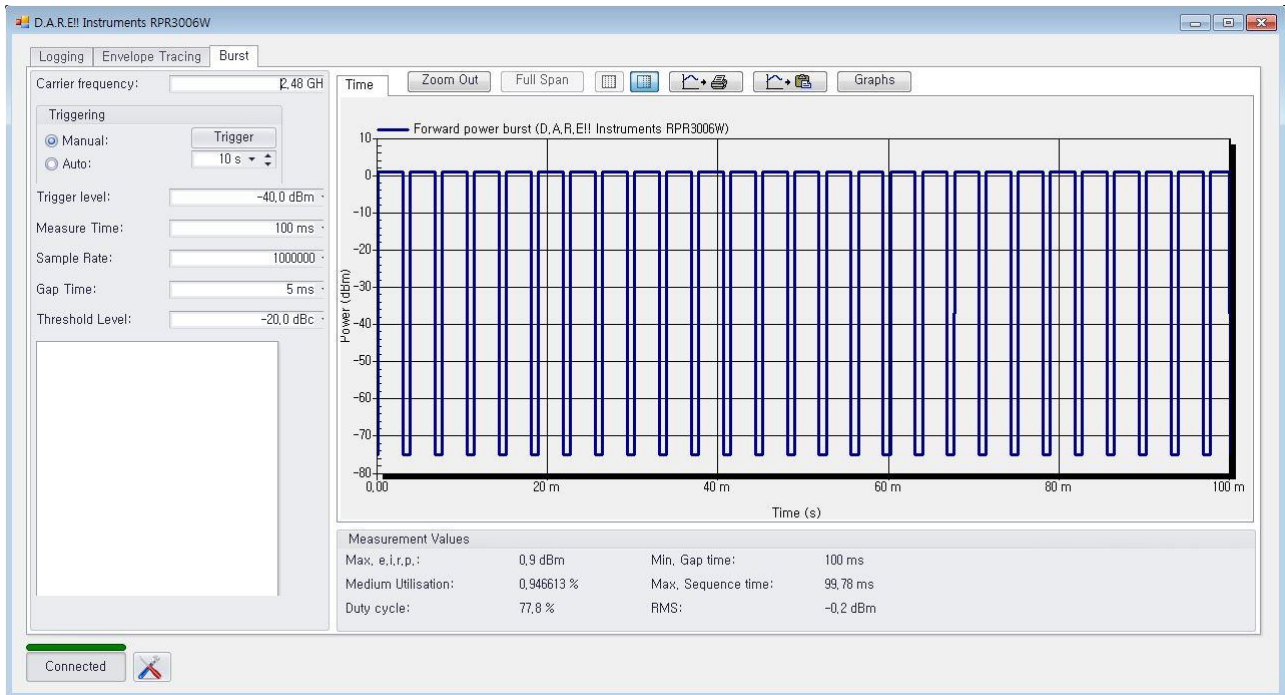
Test Mode : : BDR 2402 MHz



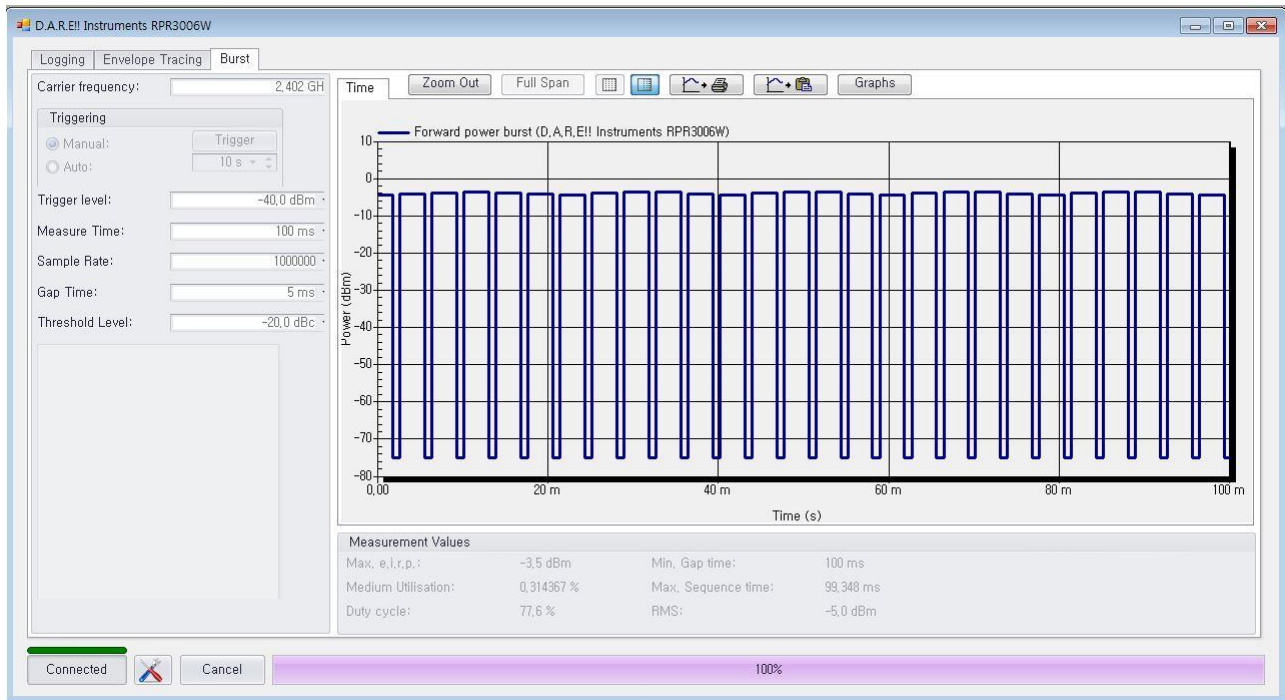
Test Mode : BDR 2441 MHz



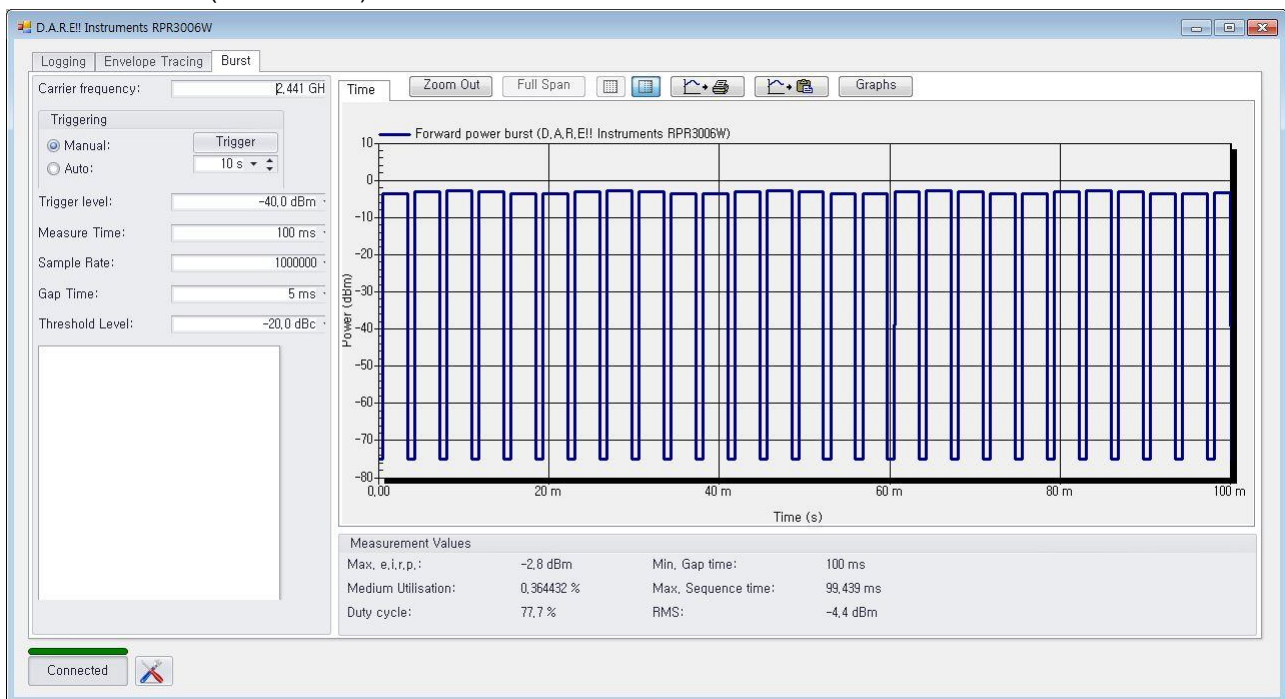
Test Mode : BDR 2480 MHz



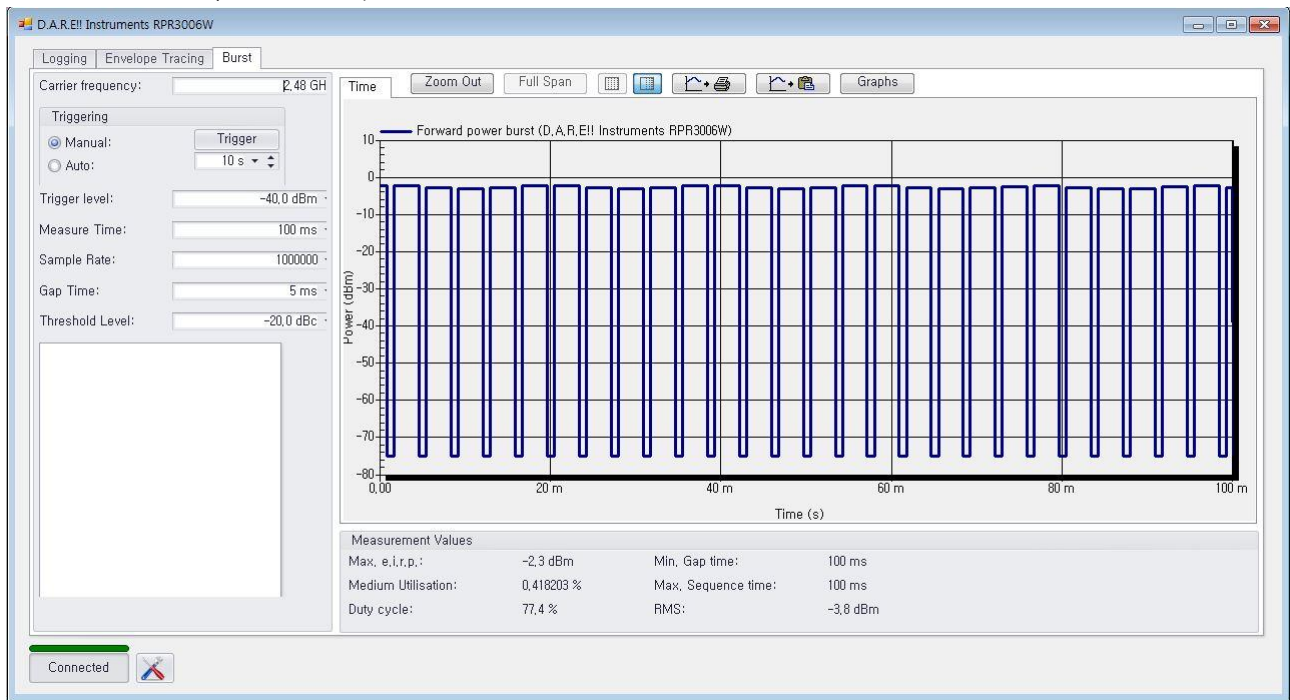
Test Mode : : EDR($\pi/4$ -DQPSK) 2402 MHz



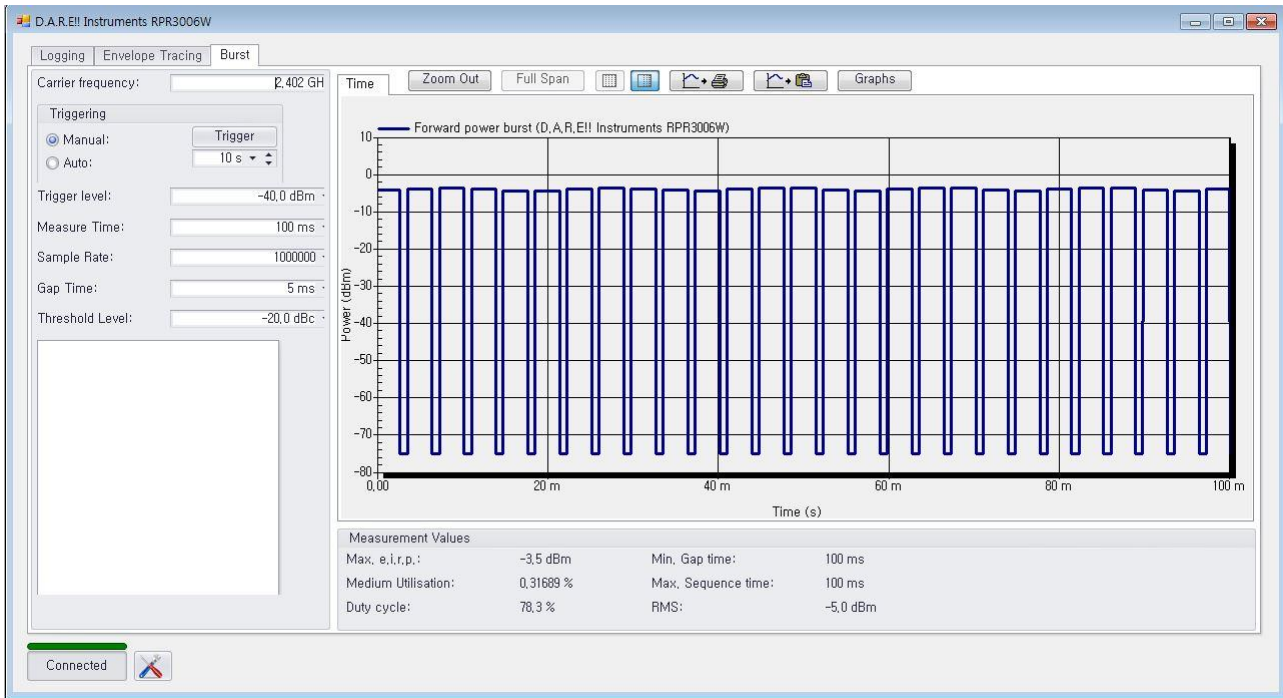
Test Mode : EDR($\pi/4$ -DQPSK) 2441 MHz



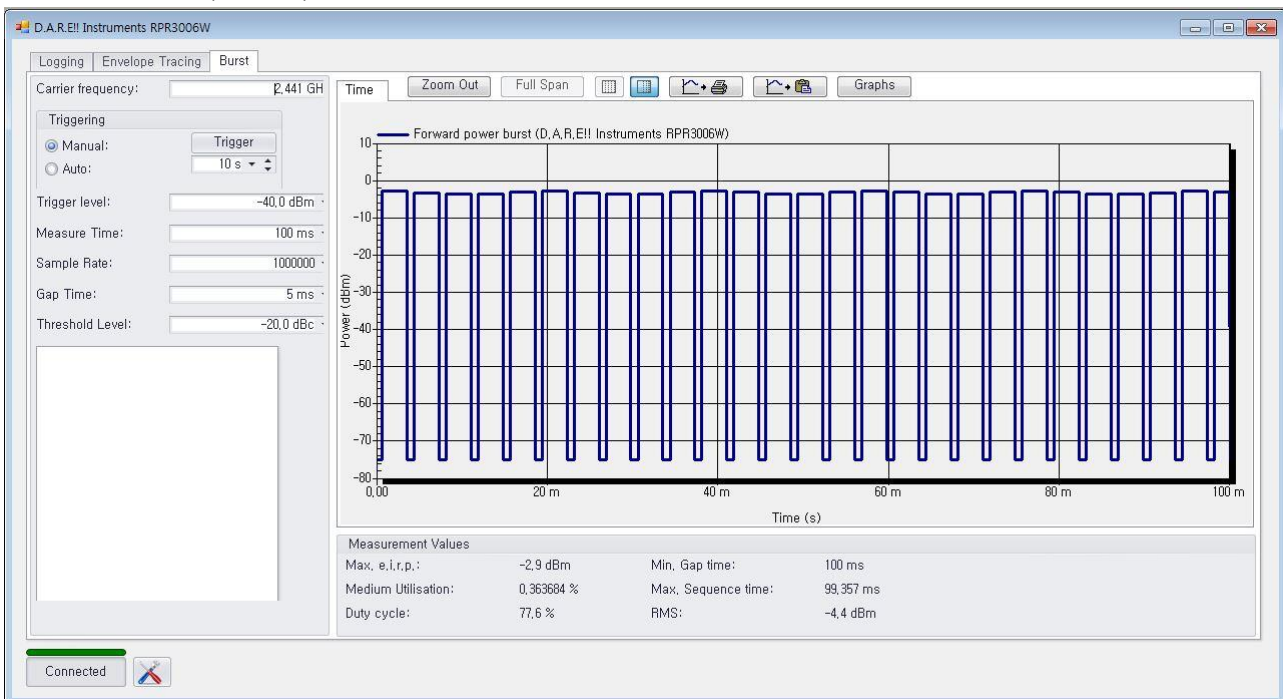
Test Mode : EDR($\pi/4$ -DQPSK) 2480 MHz



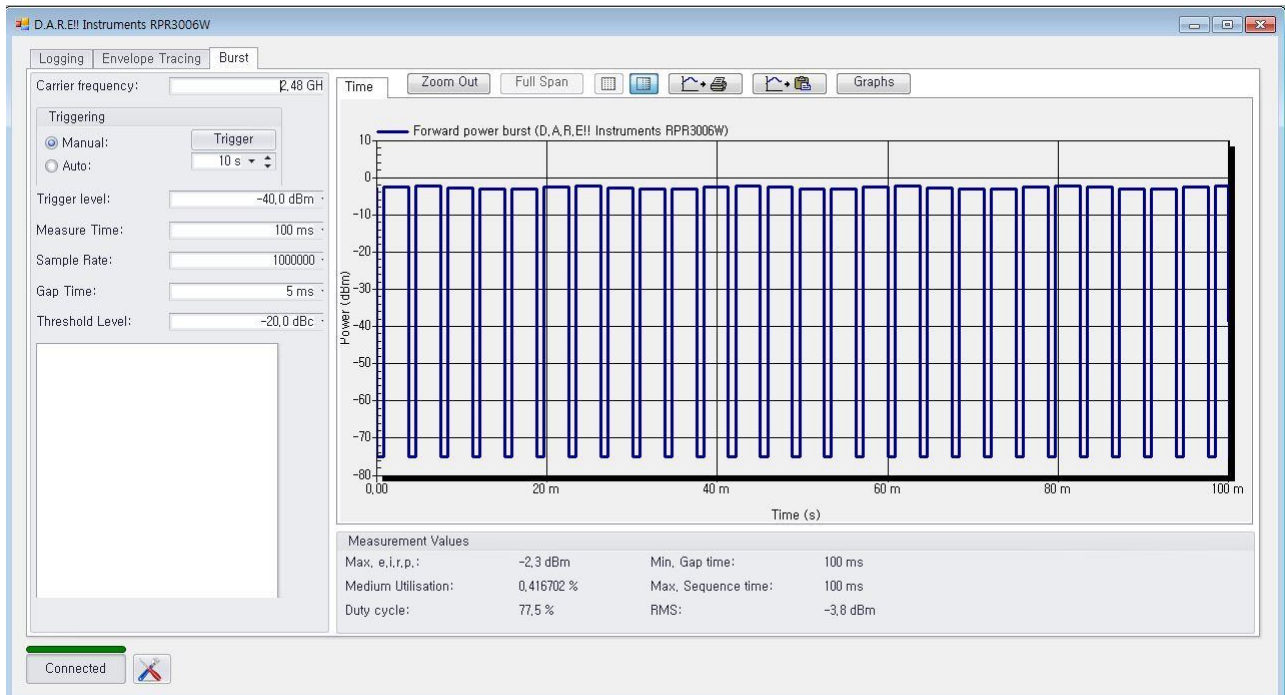
Test Mode : : EDR(8DPSK) 2402 MHz



Test Mode : EDR(8DPSK) 2441 MHz



Test Mode : EDR(8DPSK) 2480 MHz



6.7 Conducted Spurious Emission

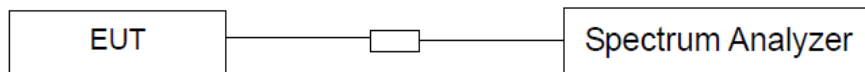
6.7.1 Test Limit

According to §15.247(d), in any 100 kHz bandwidth outside the frequency bands in which the spread spectrum intentional radiator is operating, the radio frequency power that is produced by the intentional radiator shall be at least 20dB below that in the 100kHz bandwidth within the band that contains the highest level of the desired power. In addition, radiated emissions which fall in the restricted bands, as defined in §15.205(a), must also comply with the radiated emission limits specified in §15.209(a).

6.7.2 Test Procedure

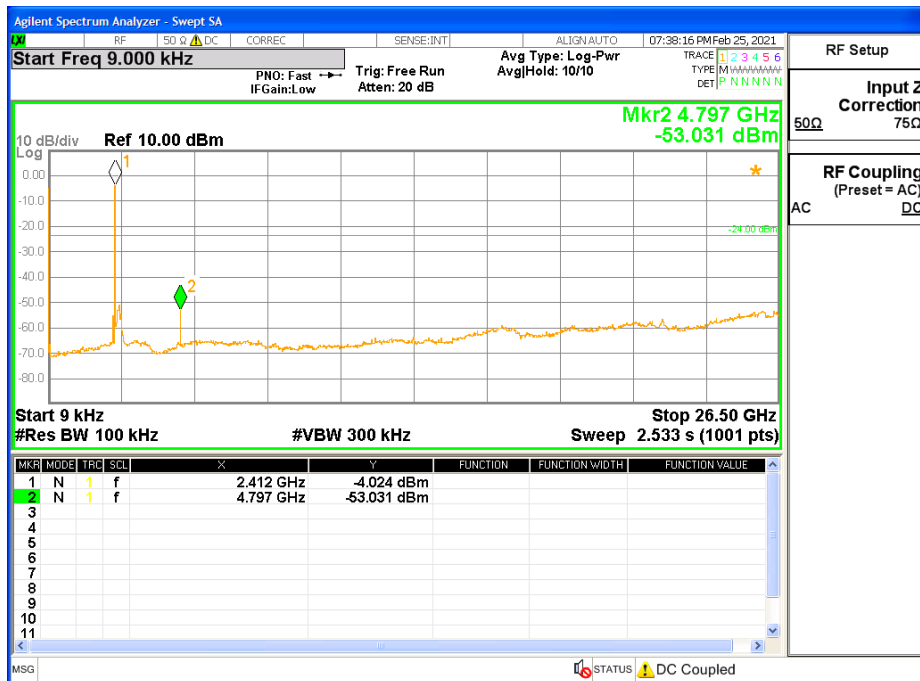
1. The testing follows the guidelines in Band-edge Compliance of RF Conducted Emissions of FCC Public Notice DA 00-705 Measurement Guidelines.
2. Set to the maximum power setting and enable the EUT transmit continuously.
3. Set RBW = 100kHz ($\geq 1\%$ span=10MHz), VBW = 300kHz (\geq RBW). Band edge emissions must be at least 20 dB down from the highest emission level within the authorized band as measured with a 100kHz RBW. The attenuation shall be 30 dB instead of 20 dB, when RMS conducted output power procedure is used.
4. Enable hopping function of the EUT and then repeat step 2. and 3.
5. Measure and record the results in the test report.

6.7.3 Test SET-UP (Block Diagram of Configuration)

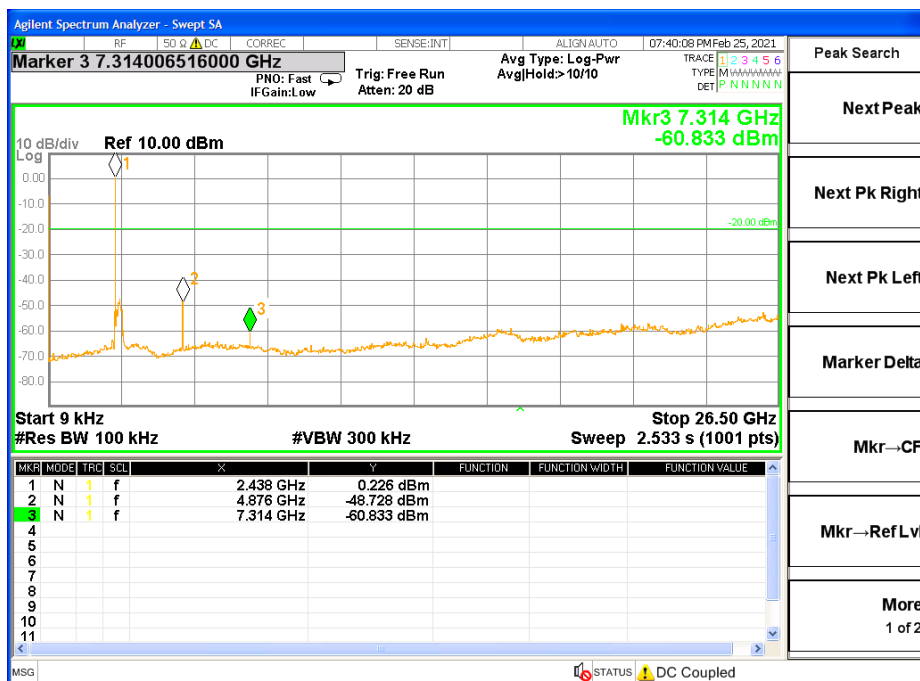


6.7.4 Test Result

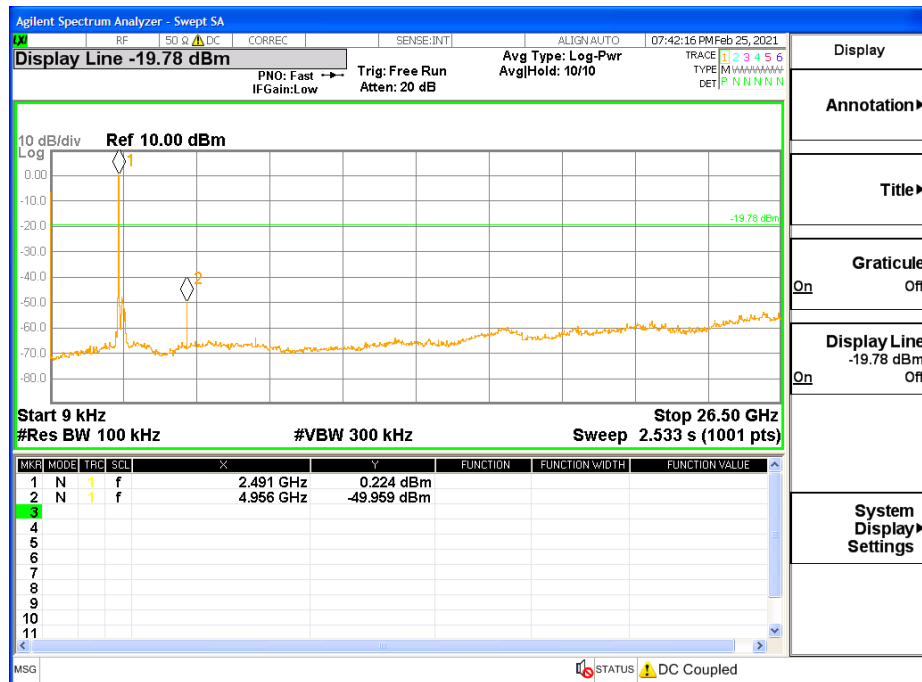
Test Mode : BDR 2402 MHz



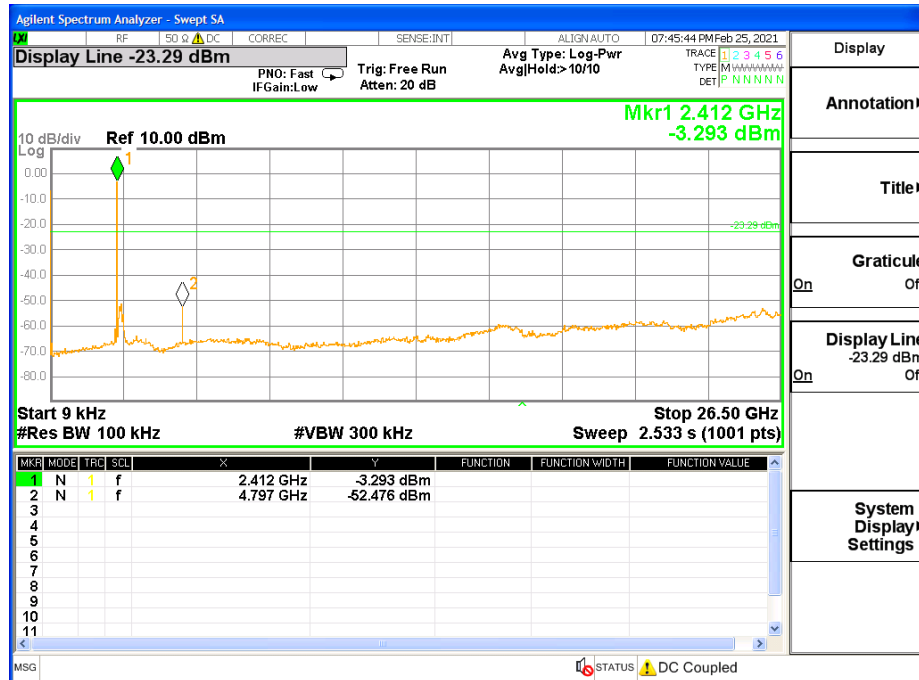
Test Mode : BDR 2441 MHz



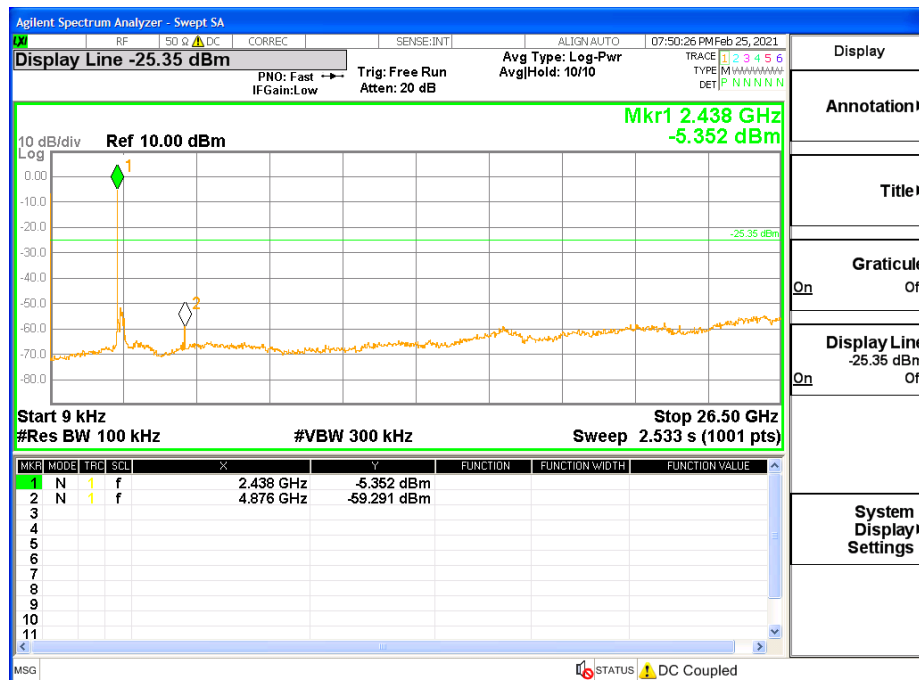
Test Mode : BDR 2480 MHz



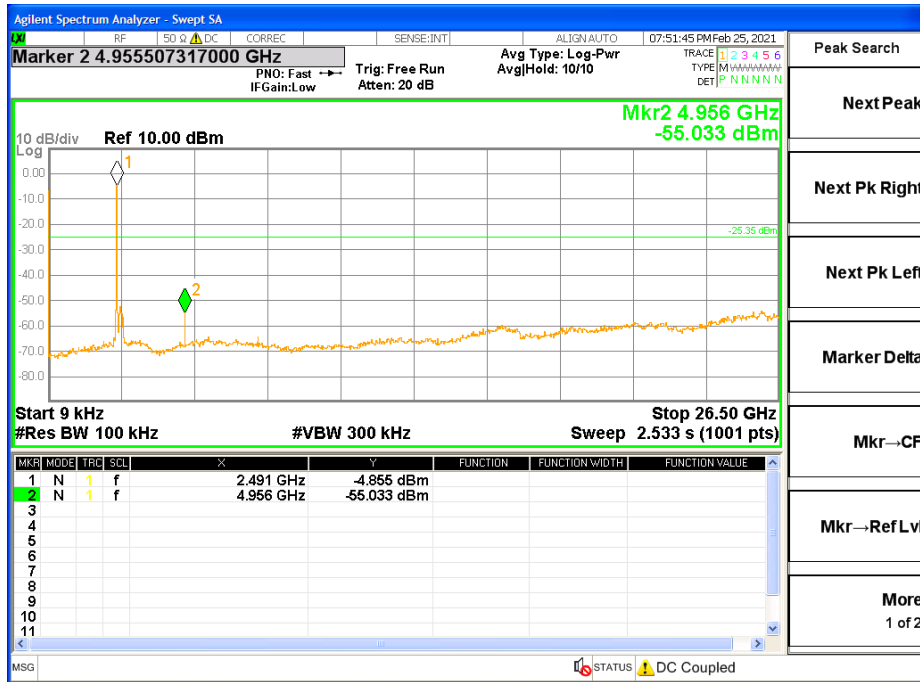
Test Mode : EDR 2402 MHz



Test Mode : EDR 2441 MHz



Test Mode : EDR 2480 MHz



6.8 Band Edges Measurement

6.8.1 Test Limit

According to §15.247(d), in any 100 kHz bandwidth outside the frequency bands in which the spread spectrum intentional radiator is operating, the radio frequency power that is produced by the intentional radiator shall be at least 20dB below that in the 100kHz bandwidth within the band that contains the highest level of the desired power. In addition, radiated emissions which fall in the restricted bands, as defined in §15.205(a), must also comply with the radiated emission limits specified in §15.209(a).

6.8.2 Test Procedure

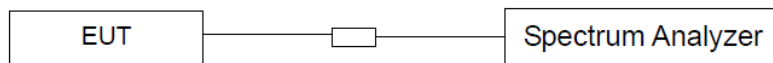
The EUT is placed on a turntable with 1.5 meter above ground.
The turntable shall be rotated for 360 degrees to determine the position of maximum emission level.
EUT is set 3m away from the receiving antenna, which is varied from 1m to 4m to find out the highest emission.
Set the spectrum analyzer in the following setting in order to capture the lower and upper band-edges of the emission:

PEAK: RBW=VBW=1MHz / Sweep=AUTO
AVERAGE: RBW=1MHz / VBW=10Hz / Sweep=AUTO

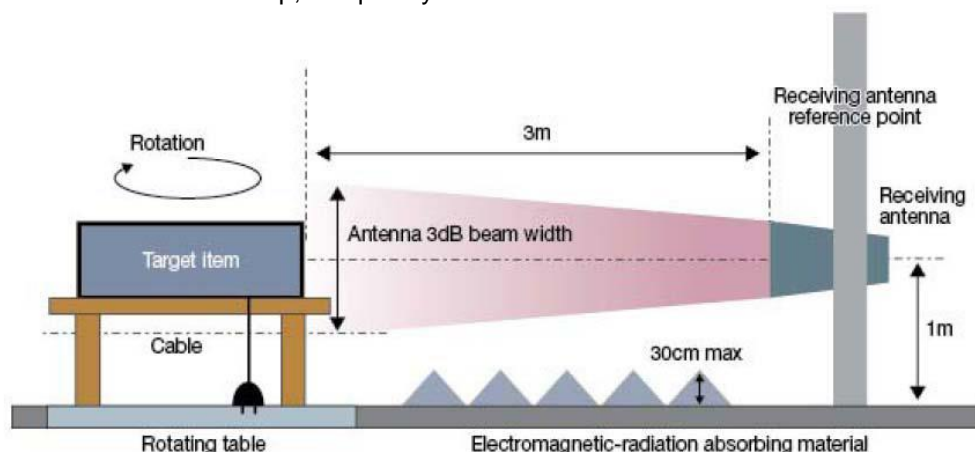
Repeat the procedures until all the PEAK and AVERAGE versus POLARIZATION are measured.

6.8.3 Test SET-UP (Block Diagram of Configuration)

(a) Conducted Emission Test Set-Up, Frequency above 1000MHz



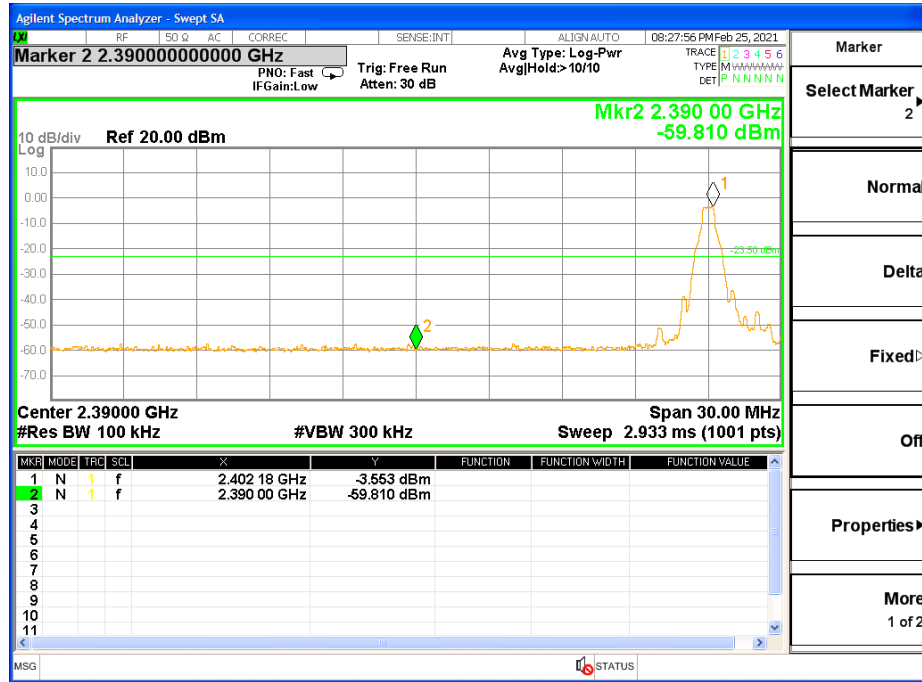
(b) Radiated Emission Test Set-Up, Frequency above 1000MHz



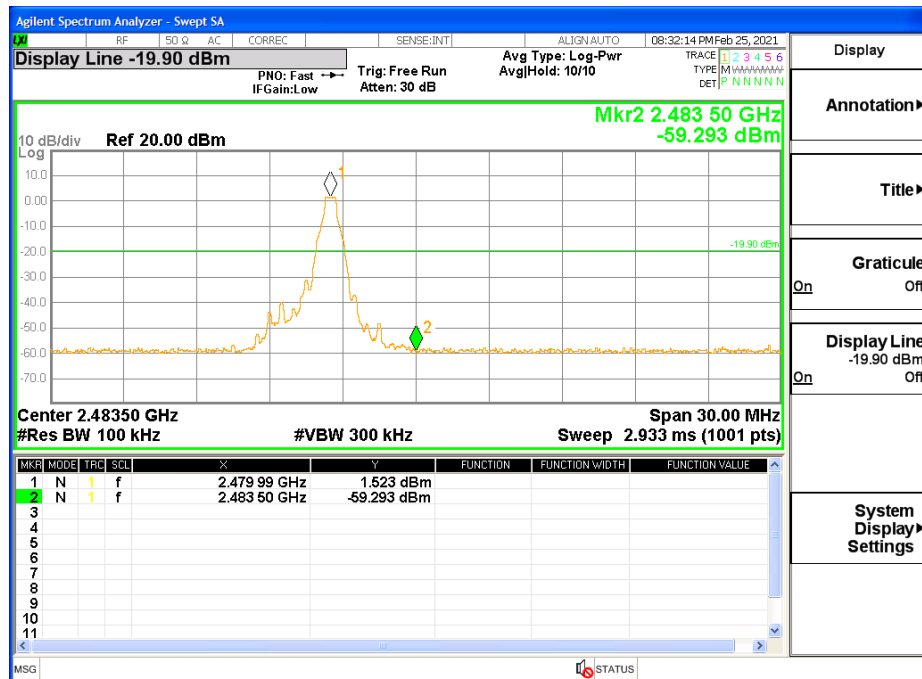
6.8.4 Test Result

[Conducted Band Edges]

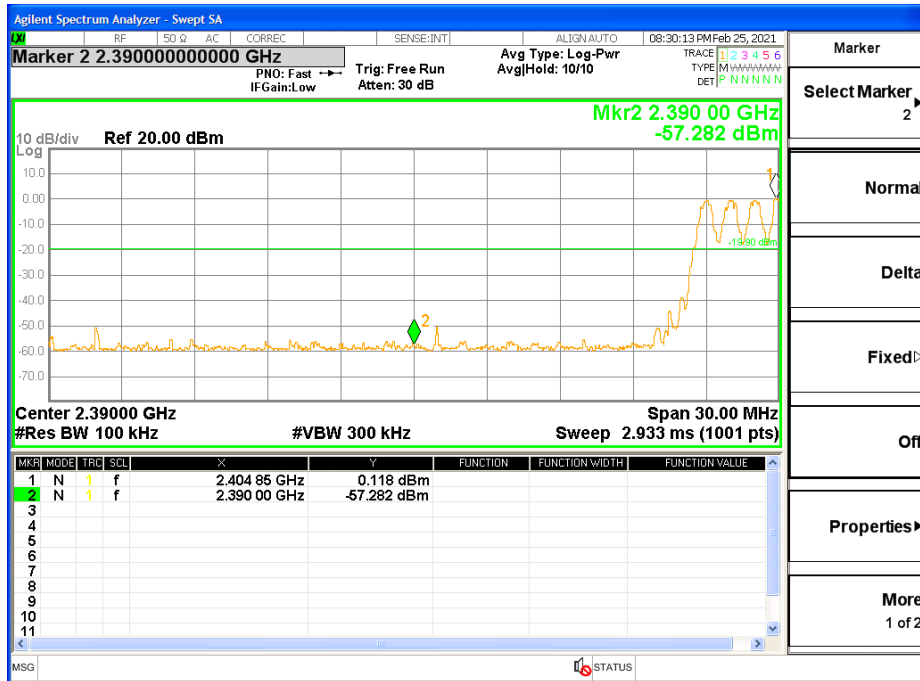
Test Mode : BDR 2402 MHz Band Edge



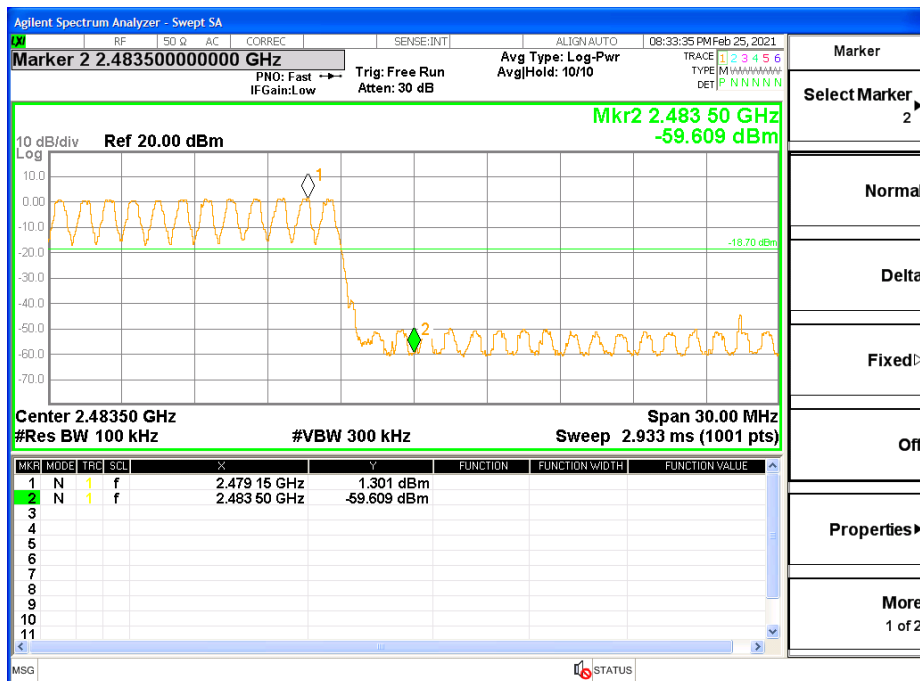
Test Mode : BDR 2480 MHz Band Edge



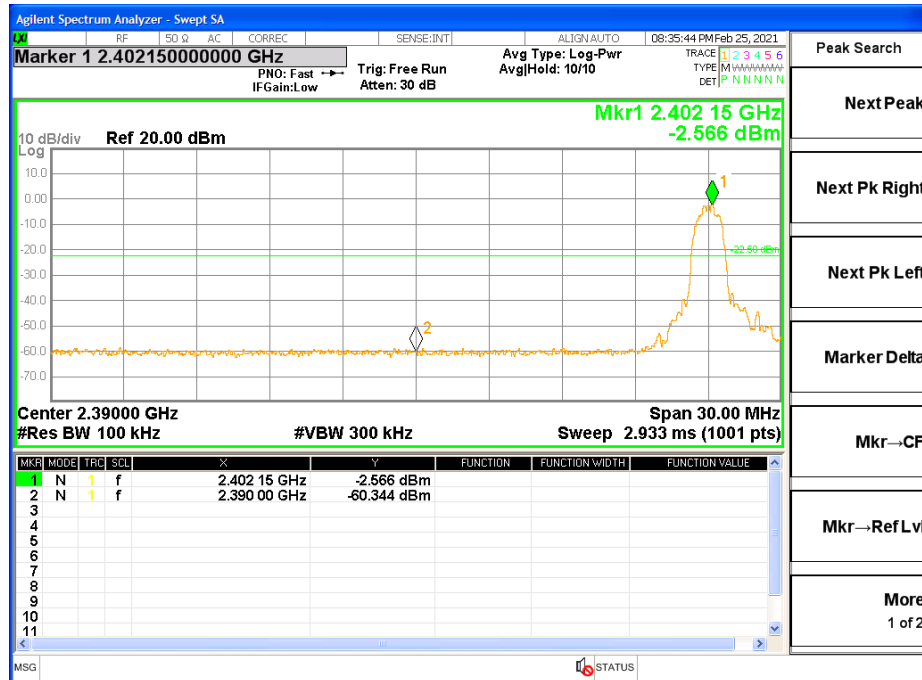
Test Mode : Hopping Mode BDR 2402 MHz Band Edge



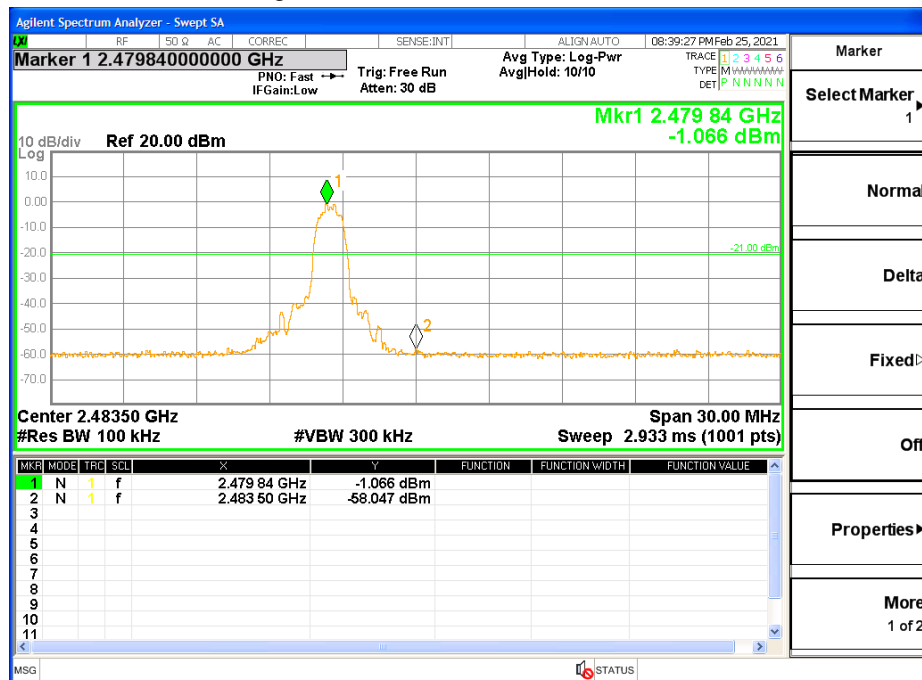
Test Mode : Hopping Mode BDR 2480 MHz Band Edge



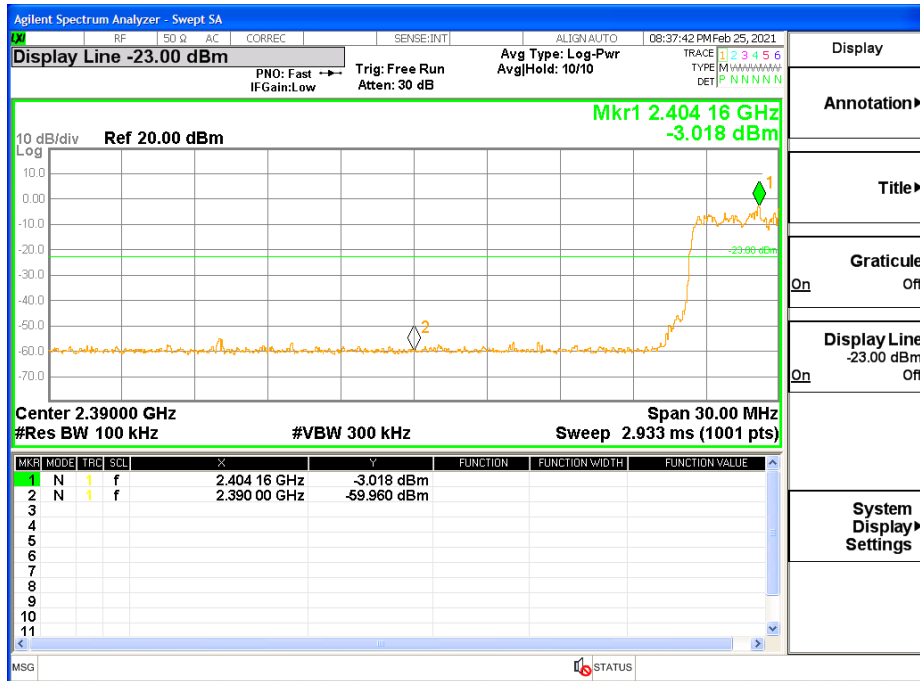
Test Mode : EDR 2402 MHz Band Edge



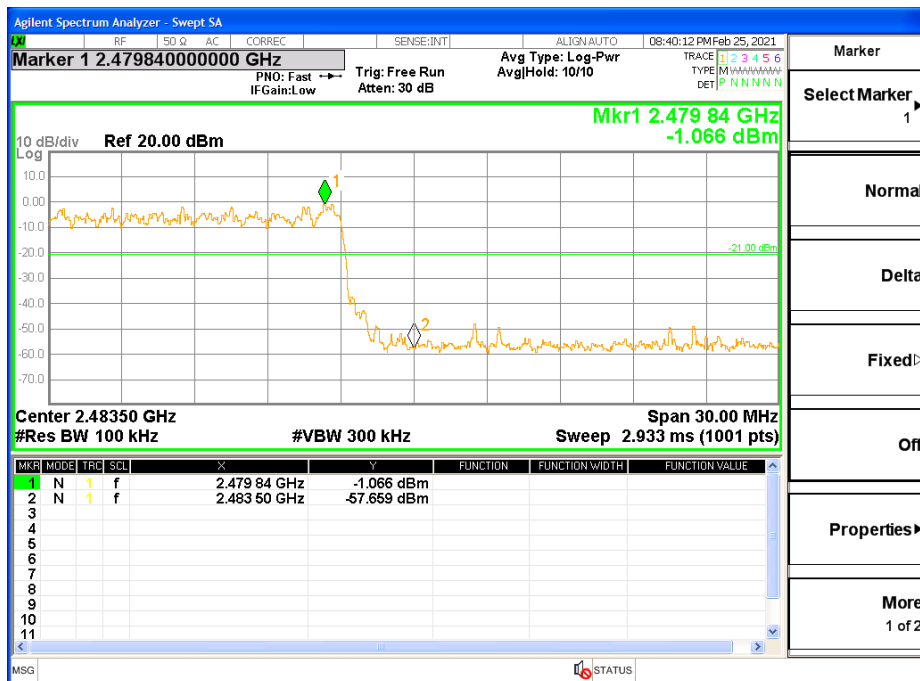
Test Mode : EDR 2480 MHz Band Edge



Test Mode : Hopping Mode EDR 2402 MHz Band Edge



Test Mode : Hopping Mode EDR 2480 MHz Band Edge



[Radiated Band Edges Test]

BDR

Frequency [MHz]	Reading [dB μ V]	Detector Mode	Factor [dB]	Level [dBuV/m]	Limit [dBuV/m]	Margin [dB]	Pol/Phase
2390	34.14	Peak	-7.65	26.49	73.98	47.49	Hor
2390	33.25	Peak	-7.65	25.60	73.98	48.38	Ver
2483.5	24.16	Peak	-7.29	16.87	73.98	57.11	Hor
2483.5	26.04	Peak	-7.29	18.75	73.98	55.23	Ver

EDR

Frequency [MHz]	Reading [dB μ V]	Detector Mode	Factor [dB]	Level [dBuV/m]	Limit [dBuV/m]	Margin [dB]	Pol/Phase
2390	33.22	Peak	-7.65	25.57	73.98	48.41	Hor
2390	34.78	Peak	-7.65	27.13	73.98	46.85	Ver
2483.5	25.64	Peak	-7.29	18.35	73.98	55.63	Hor
2483.5	27.9	Peak	-7.29	20.61	73.98	53.37	Ver

Note : Factor = Antenna Gain + Cable loss – Amplifier Gain.

6.9 Radiated Spurious Emission

6.9.1 Test Limit

In any 100 kHz bandwidth outside the intentional radiator frequency band, all harmonics/spurious must be at least 20 dB below the highest emission level within the authorized band. If the output power of this device was measured by spectrum analyzer, the attenuation under this paragraph shall be 30 dB instead of 20 dB. In addition, radiated emissions which fall in the restricted bands must also comply with the FCC section 15.209 limits as below.

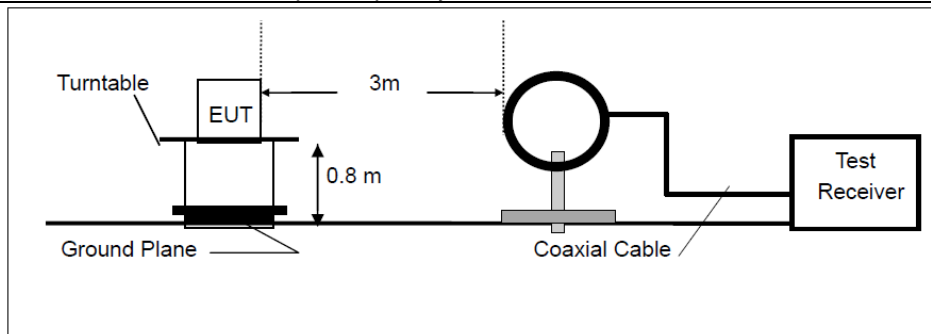
Frequency (MHz)	Field Strength (microvolts/meter)	Measurement distance (meters)
0.009-0.490	2400/F(kHz)	300
0.490-1.705	24000/F(kHz)	30
1.705-30.0	30	30
30-88	100	3
88-216	150	3
216-960	200	3

6.9.2 Test Procedure

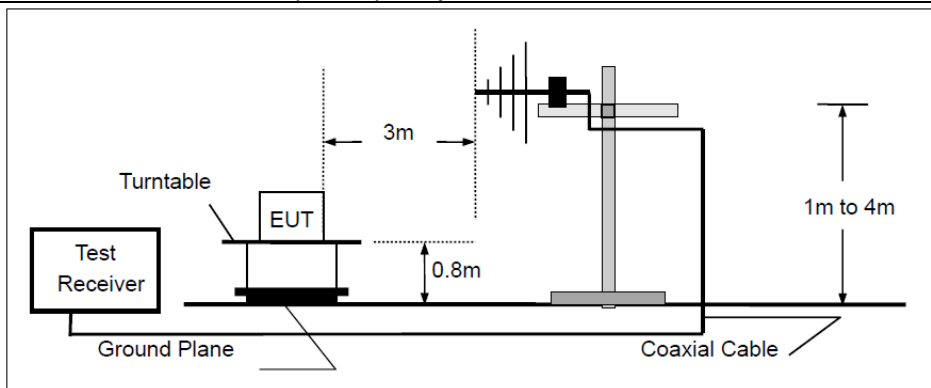
1. The testing follows the guidelines in Spurious Radiated Emissions of FCC Public Notice DA 00-705 Measurement Guidelines.
2. The EUT was placed on a turntable with 0.8 meter for frequency below 1GHz and 1.5 meter for frequency above 1GHz respectively above ground.
3. The EUT was set 3 meters from the interference receiving antenna, which was mounted on the top of a variable height antenna tower.
4. For each suspected emission, the EUT was arranged to its worst case and then tune the Antenna tower (from 1 m to 4 m) and turntable (from 0 degree to 360 degrees) to find the maximum reading. A pre-amp and a high pass filter are used for the test in order to get better signal level to comply with the guidelines.
5. Set to the maximum power setting and enable the EUT transmit continuously.
6. Use the following spectrum analyzer settings:
 - (1) Span shall wide enough to fully capture the emission being measured;
 - (2) Set RBW=100 kHz for $f < 1$ GHz, RBW=1MHz for $f > 1$ GHz ; VBW RBW; Sweep = auto; Detector function = peak; Trace = max hold for peak
 - (3) For average measurement: use duty cycle correction factor method per 15.35(c).
 Duty cycle = On time/100 milliseconds
 On time = $N1 \cdot L1 + N2 \cdot L2 + \dots + Nn-1 \cdot L_{Nn-1} + Nn \cdot L_n$
 Where N1 is number of type 1 pulses, L1 is length of type 1 pulses, etc.
 Average Emission Level = Peak Emission Level + $20 \cdot \log(\text{Duty cycle})$
7. Corrected Reading: Antenna Factor + Cable Loss + Read Level - Preamp Factor = Level

6.9.3 Test SET-UP (Block Diagram of Configuration)

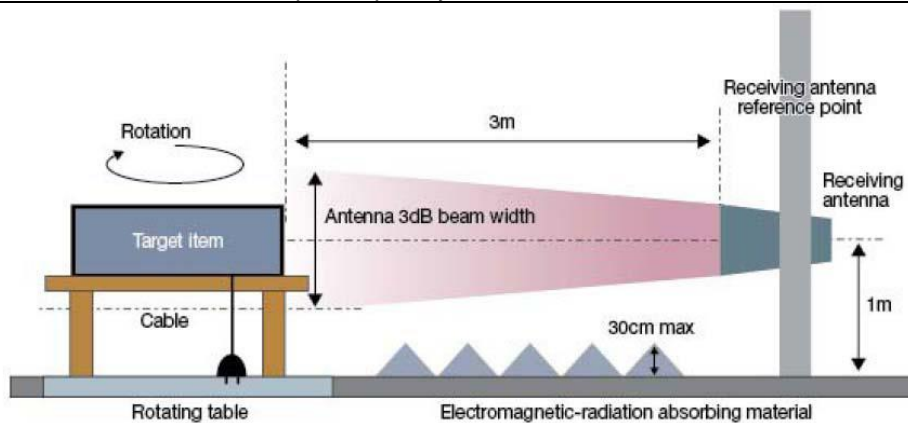
1. Radiated Emission Test Set-Up, Frequency Below 30 MHz



2. Radiated Emission Test Set-Up, Frequency Below 1000 MHz



3. Radiated Emission Test Set-Up, Frequency above 1000MHz



6.9.4 Test Result**[Below 30MHz]**

Frequency [MHz]	Reading [dB μ V]	Antenna Factor [dB]	Cable Loss [dB]	Preamp Factor [dB]	Level [dBuV/m]	Pol/Phase
No other emissions were detected at a level greater than 20 dB below limit.						

Remark: §15.31(o)_The amplitude of spurious emissions from intentional radiators and emissions from unintentional radiators which are attenuated more than 20 dB below the permissible value need not be reported unless specifically required elsewhere in this part.

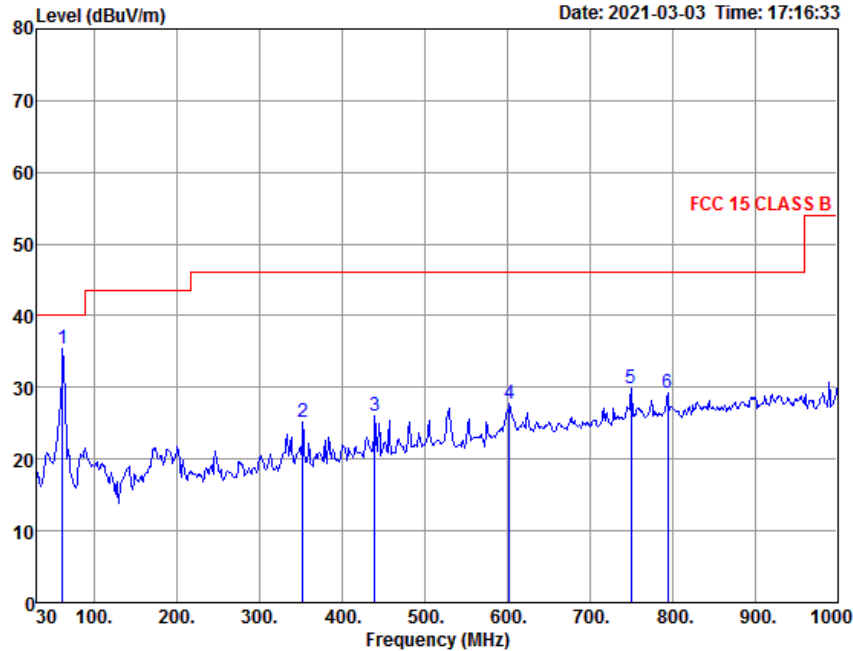
[Below 1 GHz – 30 MHz ~ 1 GHz]

Test Mode : BDR (Worst case : Vertical F1)

Radiated Emission TEST .test

EUT: MH100
Manufacturer: Seers
Operating Condition: BDR_F1_V

Data: 14 File: C:\Users\user\Desktop\Test Data\조용기\Seers\FCC radiated.EM6 (14)
Date: 2021-03-03 Time: 17:16:33



Freq. MHz	AntFac (dB/m)	CabLoss (dB)	Preamp (dB)	Reading (dBuV)	Measured (dBuV/m)	Over (dBuV/m)	Limit (dBuV/m)	Pol/Phase	Remark
61.0	18.29	0.70	37.10	53.52	35.41	-4.59	40.00	VERTICAL	Peak
352.0	21.18	0.60	36.47	39.81	25.12	-20.88	46.00	VERTICAL	Peak
439.3	22.40	0.89	36.25	38.96	26.00	-20.00	46.00	VERTICAL	Peak
602.3	25.45	1.76	35.87	36.41	27.75	-18.25	46.00	VERTICAL	Peak
749.7	27.19	2.73	35.55	35.50	29.87	-16.13	46.00	VERTICAL	Peak
794.4	27.09	3.02	35.45	34.55	29.21	-16.79	46.00	VERTICAL	Peak

Note: 1. Measured Level = Antenna Factor + Cable Loss - Preamp + Reading

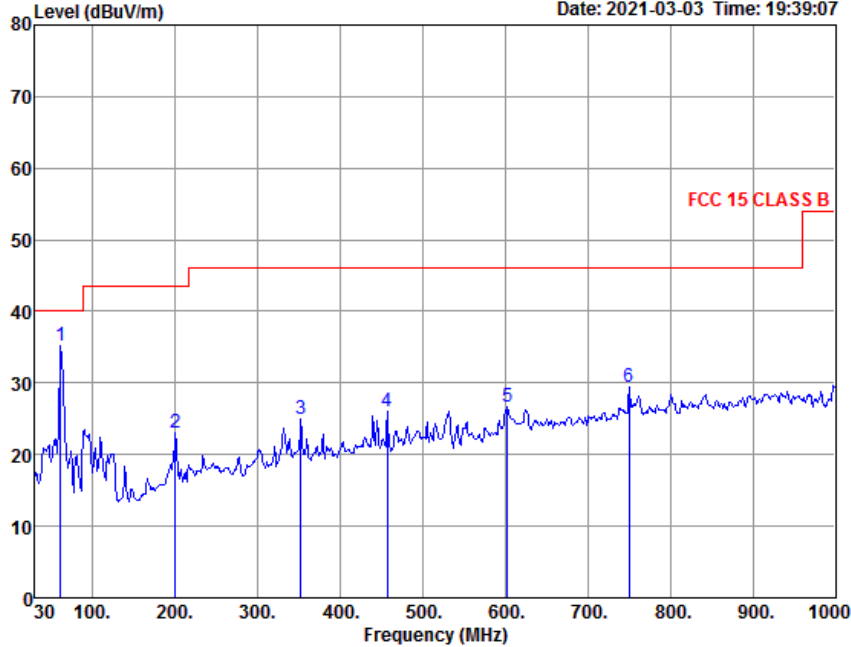
Note : Only the worst case plots for Radiated Spurious Emissions.

Test Mode : EDR (Worst case : Vertical F2)

Radiated Emission TEST ..test

EUT: MH100
Manufacturer: Seers
Operating Condition: EDR_F2_BELOW_1G_V

Data: 22 File: C:\Users\user\Desktop\Test Data\조용기\Seers\FCC radiated.EM6 (22)
Date: 2021-03-03 Time: 19:39:07



Freq. MHz	AntFac (dB/m)	CabLoss (dB)	Preamp (dB)	Reading (dBUV)	Measured (dBUV/m)	Over (dBUV/m)	Limit (dBUV/m)	Pol/Phase	Remark
61.0	18.29	0.70	37.10	53.26	35.15	-4.85	40.00	VERTICAL	Peak
199.8	17.45	0.70	36.85	41.76	23.06	-20.44	43.50	VERTICAL	Peak
352.0	21.18	0.60	36.47	39.63	24.94	-21.06	46.00	VERTICAL	Peak
456.8	22.30	0.95	36.21	39.05	26.09	-19.91	46.00	VERTICAL	Peak
602.3	25.45	1.76	35.87	35.36	26.70	-19.30	46.00	VERTICAL	Peak
749.7	27.19	2.73	35.55	35.03	29.40	-16.60	46.00	VERTICAL	Peak

Note: 1. Measured Level = Antenna Factor + Cable Loss - Preamp + Reading

Note : Only the worst case plots for Radiated Spurious Emissions.

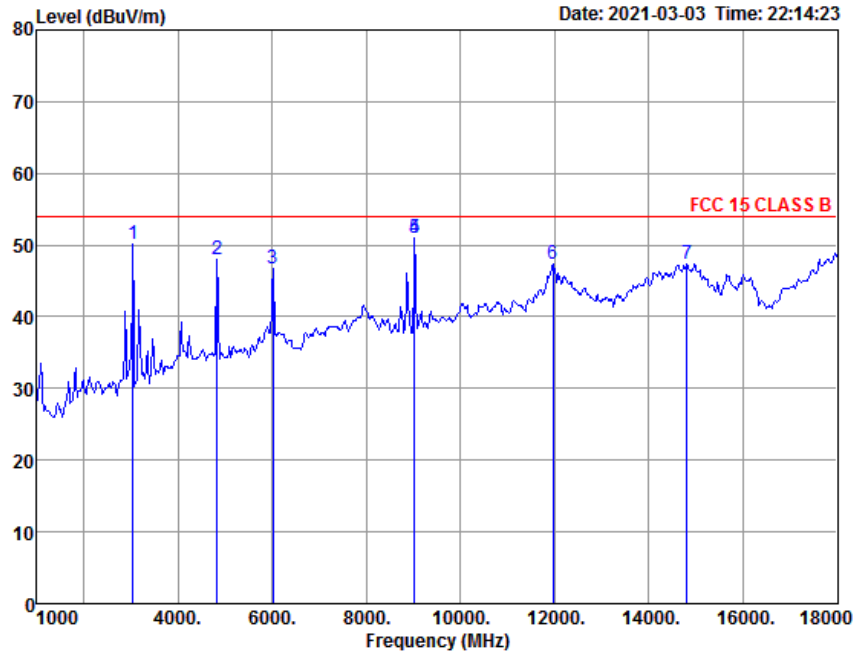
[Above 1 GHz – 1 GHz ~ 18 GHz]

Test Mode : BDR (Worst case : Vertical F1)

Radiated Emission TEST ..test

EUT: MH100
Manufacturer: Seers
Operating Condition: BDR-F1_ABOVE_1G_V

Data: 69 File: C:\Users\user\Desktop\Test Data\조용기\Seers\FCC radiated.EM6 (69)
Date: 2021-03-03 Time: 22:14:23



Freq. MHz	AntFac (dB/m)	CabLoss (dB)	Preamp (dB)	Reading (dBuV)	Measured (dBuV/m)	Over (dBuV/m)	Limit (dBuV/m)	Pol/Phase	Remark
3040.0	-11.14	3.85	0.00	57.52	50.23	-3.77	54.00	VERTICAL	Peak
4825.0	-6.96	5.61	0.00	49.25	47.90	-6.10	54.00	VERTICAL	Peak
6015.0	-3.31	6.15	0.00	43.83	46.67	-7.33	54.00	VERTICAL	Peak
9024.0	-2.13	5.80	0.00	47.26	50.93	-3.07	54.00	VERTICAL	Peak
9024.0	-2.13	5.80	0.00	47.26	50.93	-3.07	54.00	VERTICAL	Peak
11965.0	4.38	7.23	0.00	35.80	47.41	-6.59	54.00	VERTICAL	Peak
14804.0	4.23	8.36	0.00	34.84	47.43	-6.57	54.00	VERTICAL	Peak

Note: 1. Measured Level = Antenna Factor + Cable Loss - Preamp + Reading

Note ⁽¹⁾ : Only the worst case plots for Radiated Spurious Emissions.

Note ⁽²⁾ : No other emissions were detected.

Note ⁽³⁾ : A band rejection filter was used for this test.

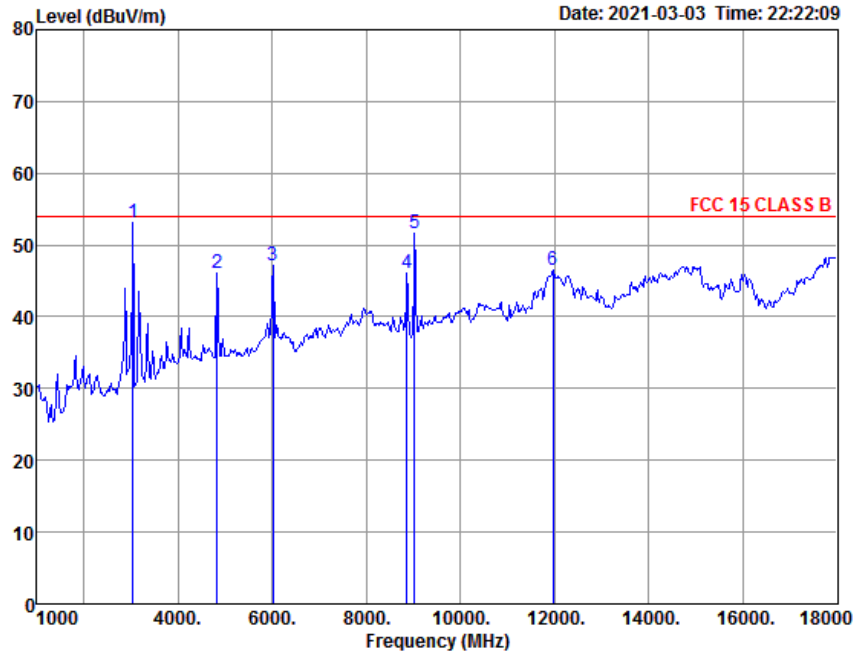
[Above 1 GHz – 1 GHz ~ 18 GHz]

Test Mode : EDR (Worst case : Vertical F1)

Radiated Emission TEST ..test

EUT: MH100
Manufacturer: Seers
Operating Condition: EDR_F1_ABOVE1G_V

Data: 71 File: C:\Users\user\Desktop\Test Data\조용기\Seers\FCC radiated.EM6 (71)
Date: 2021-03-03 Time: 22:22:09



Freq. MHz	AntFac (dB/m)	CabLoss (dB)	Preamp (dB)	Reading (dBuV)	Measured (dBuV/m)	Over (dBuV/m)	Limit (dBuV/m)	Pol/Phase	Remark
3040.0	-11.14	3.85	0.00	60.46	53.17	-0.83	54.00	VERTICAL	Peak
4825.0	-6.96	5.61	0.00	47.35	46.00	-8.00	54.00	VERTICAL	Peak
6015.0	-3.31	6.15	0.00	44.29	47.13	-6.87	54.00	VERTICAL	Peak
8854.0	-1.89	5.72	0.00	42.21	46.04	-7.96	54.00	VERTICAL	Peak
9024.0	-2.13	5.80	0.00	48.00	51.67	-2.33	54.00	VERTICAL	Peak
11965.0	4.38	7.23	0.00	34.81	46.42	-7.58	54.00	VERTICAL	Peak

Note: 1. Measured Level = Antenna Factor + Cable Loss - Preamp + Reading

Note ⁽¹⁾ : Only the worst case plots for Radiated Spurious Emissions.

Note ⁽²⁾ : No other emissions were detected.

Note ⁽³⁾ : A band rejection filter was used for this test.

[Above 18 GHz – 18 GHz ~ 30 GHz]

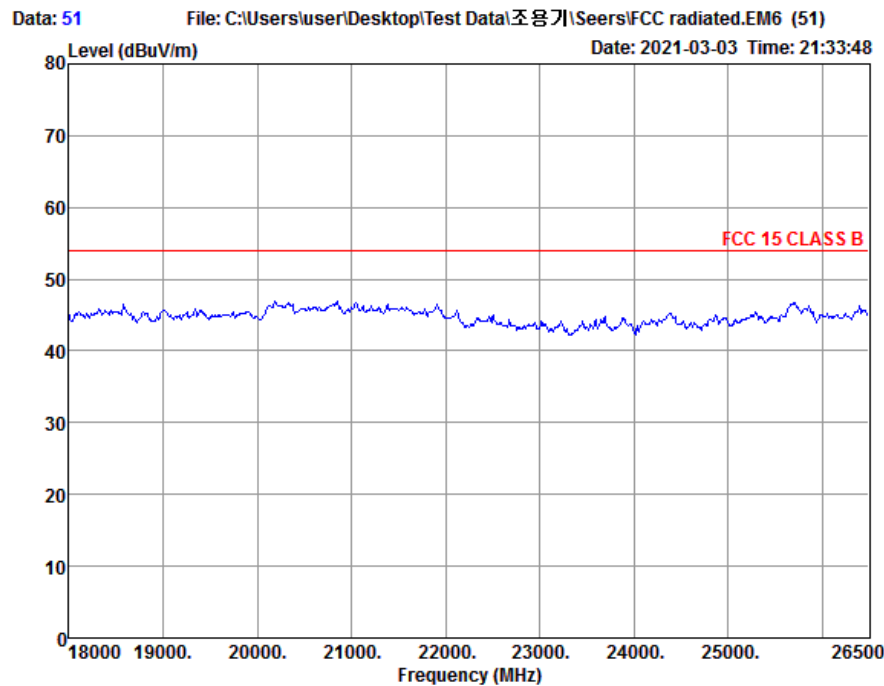
Test Mode : BDR (Worst case : Horizontal F1)

Radiated Emission TEST .test

EUT: MH100

Manufacturer: Seers

Operating Condition: BDR_F1_ABOVE_18G_H



Note ⁽¹⁾ : Only the worst case plots for Radiated Spurious Emissions.

Note ⁽²⁾ : No other emissions were detected.

[Above 18 GHz – 18 GHz ~ 30 GHz]

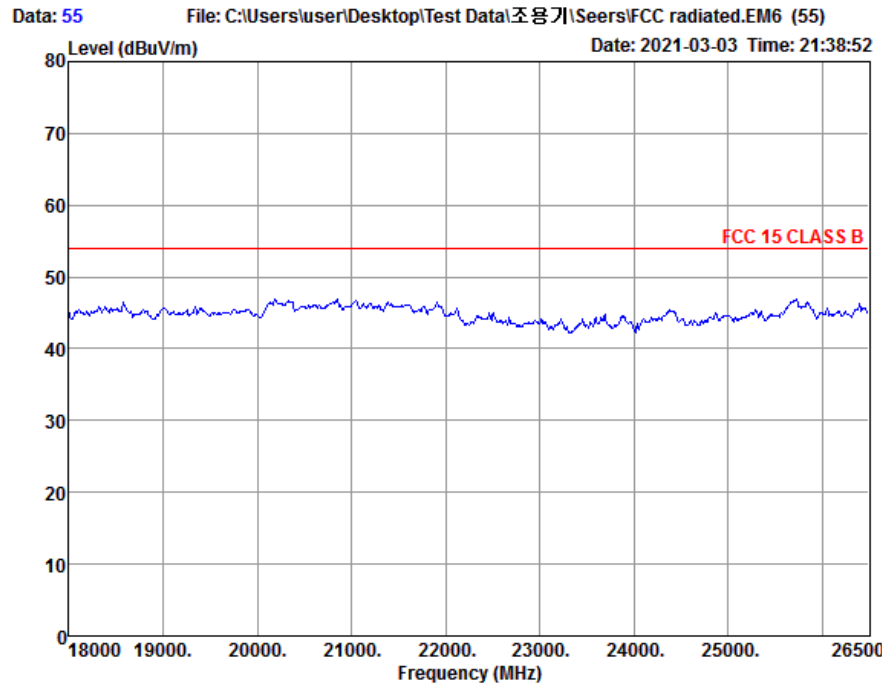
Test Mode : EDR (Worst case : Vertical F2)

Radiated Emission TEST .test

EUT: MH100

Manufacturer: Seers

Operating Condition: EDR_F2_ABOVE_18G_V



Note ⁽¹⁾ : Only the worst case plots for Radiated Spurious Emissions.

Note ⁽²⁾ : No other emissions were detected.

6.10 Antenna Application

6.10.1 Antenna Requirement

According to §15.203, an intentional radiator shall be designed to ensure that no antenna other than that furnished by the responsible party shall be used with the device.

And according to §15.247 (b), if transmitting antennas of directional gain greater than 6dBi are used, the power shall be reduced by the amount in dB that the directional gain of the antenna exceeds 6dBi.

6.10.2 Test Results

Antenna Type	Frequency	Antenna Gain	Limit	Result
Dielectric Chip Antenna	2.425 GHz	1.99 dBi	≤ 6 dBi	Pass

<End>